

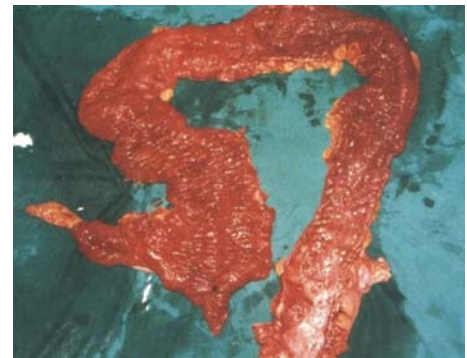
SURGICAL PHOTO QUIZ

By
Egyptian Group for Colorectal Surgeons
Ahmed A Abou-Zeid
Professor of Surgery Ain Shams University

Email: ahabaz@hotmail.com

All the following are features of this disease except

1. Starts distally
2. Can predispose to cancer
3. Crypt abscess
4. Internal and external fistulae are common
5. Radical surgery is curative for the GI pathology



Send your answer to ejs@ess-eg.org

The correct answer and a short comment on the condition will be presented in the next issue of the journal.

The correct answer for previous Photo Quiz (Vol 27, No 2, April, 2008)

The right answer is: (5) Strictureplasty.

Crohn's disease is a chronic granulomatous disease that can affect any part of the gut from mouth to anus. It is characterized by transmural inflammation and is notorious for causing fistulae, abscesses, strictures and perforations in different parts of the gut. The mainstay of treatment is medical but patients are frequently referred to surgery to treat the aforementioned complications. Surgery is not curative because the disease is characterized by remissions and relapses. Resectional surgery is not advised because patients frequently require more than one surgery and multiple resections will eventually result in short bowel. Bypass is not advised because it invites bacterial overgrowth and nutritional deficiencies. Balloon dilatation would be an option if it can avoid surgery. The best treatment for this short segment stricture is stricturoplasty in which the stricture is opened longitudinally and closed transversely. Advantages of stricturoplasty is that it treats the stricture without sacrificing the bowel. Studies showed that this technique is safe and that it is not associated with higher incidence of disease relapse.

