

Sustainable Nursing Care for Oncology Patients


Prepared by

Dr.Eman Hendy Dr.Yasmin Mohamed Dr.Nesma Yousef

Lecturers at Medical Surgical Nursing Department – MTI University



Outlines

 Introduction Incidence of cancer Oncology health Nursing Integration of Sustainability in nursing care for oncology patients Applications of integrating sustainability in oncology patients in Egypt Conclusion References

Introduction

In 2015, the United Nations came together to adopt 17 goals as a part of the 2030 Agenda for Sustainable Development, whose objectives summarize a universal call of actions to eradicate poverty, protect the environment and ensure that all people have access to opportunities of health and well-being in an equitable and sustainable way.



Introduction

The global oncology nursing workforce is essential to achieving Sustainable Development Goals such as reducing non-communicable disease morbidity by a third by 2030 and universal health coverage, waste reduction also, ensuring healthy lives and promote physical and psychological well-being for all at all ages.

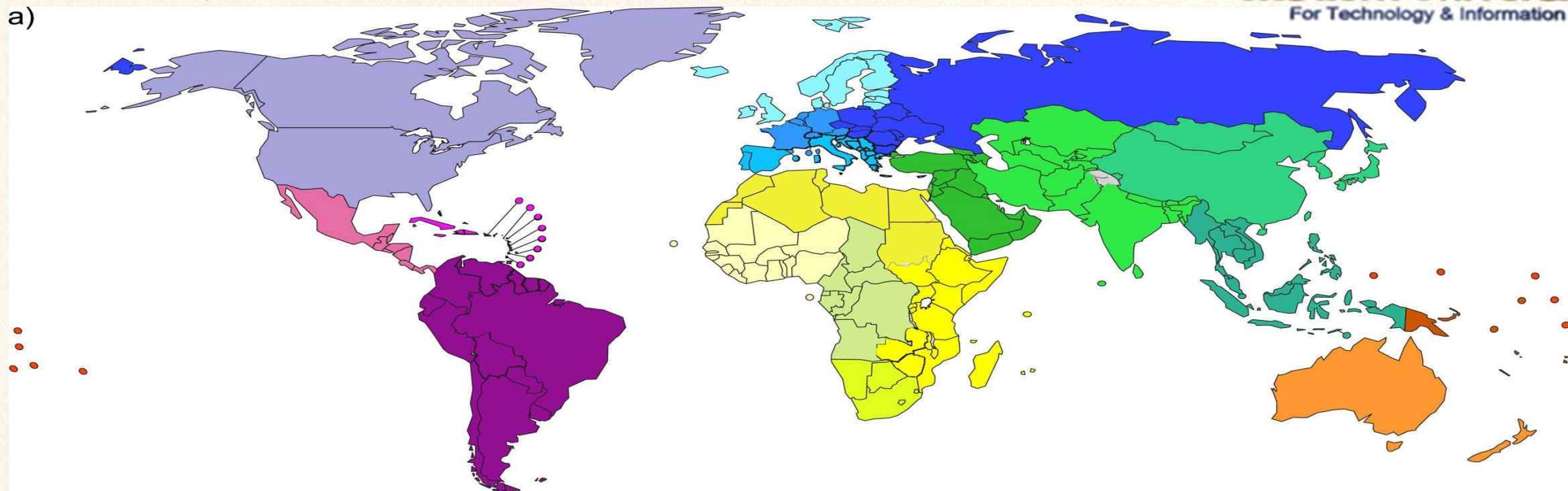


Incidence

Cancer considered a leading cause of death worldwide, contributes to more than one in every six deaths globally. WHO, projecting that cancer incidence will increase by 50% by 2040 in comparison to 2020 levels. There were close to 20 million new cases of cancer alongside 9.7 million deaths from cancer 2022 according to (**Global cancer Statistics, 2022**).



a)


World area (% of population)
Americas (13.1%)

- Northern (4.7%)
- Central (2.3%)
- Caribbean (0.6%)
- South (5.5%)

Africa (17.6%)

- Northern (3.2%)
- Western (5.3%)
- Middle (2.4%)
- Eastern (5.8%)
- Southern (0.9%)

Europe (9.6%)

- Western (2.5%)
- Northern (1.4%)
- Southern (2.0%)
- Eastern (3.7%)

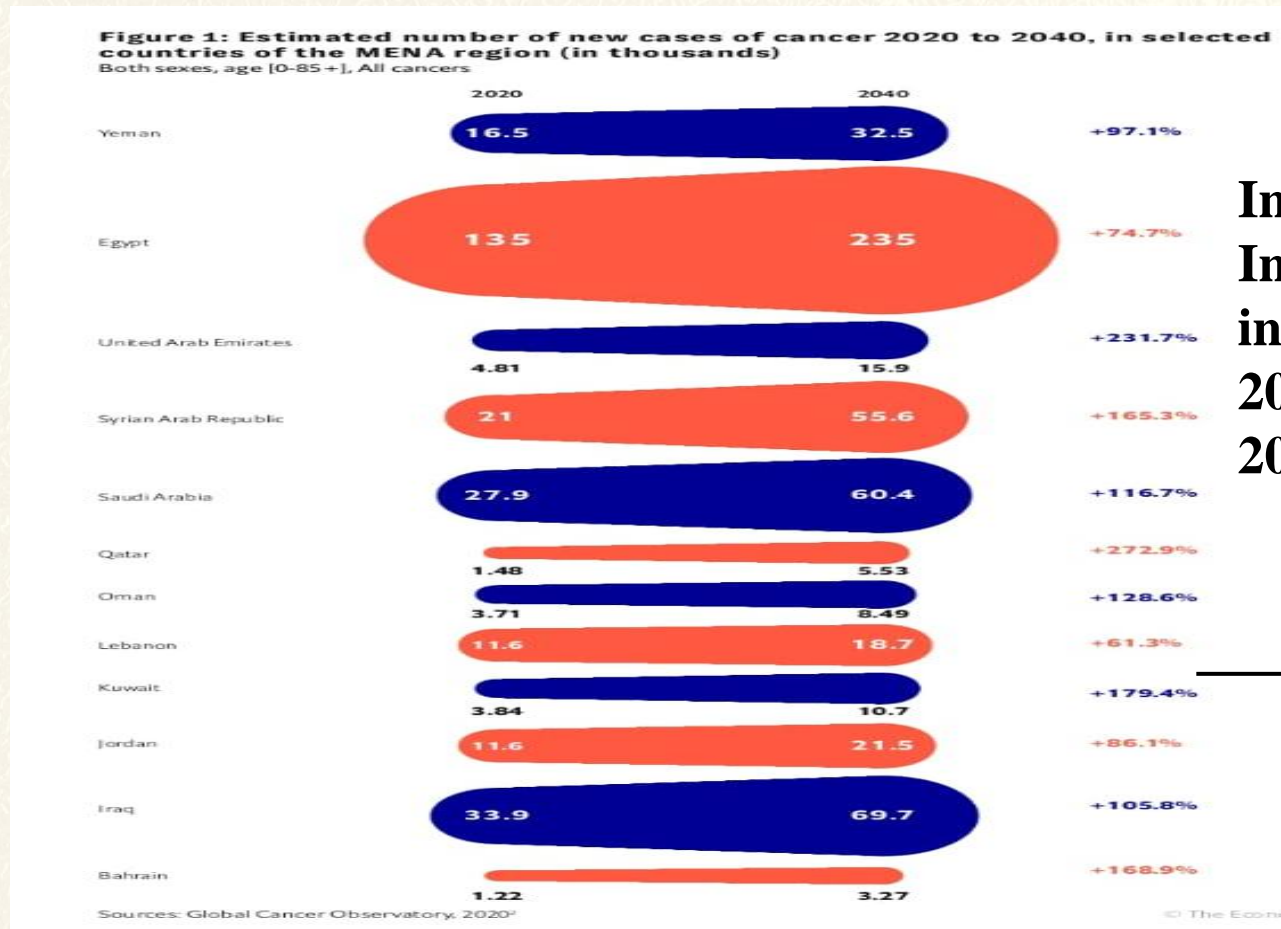
Asia (59.2%)

- Western (3.6%)
- South Central (26.0%)
inc. India (17.7%)
- Eastern (21.0%)
inc. China (18.3%)
- South-Eastern (8.6%)

Oceania (0.5%)

- Australia/New Zealand (0.4%)
- Melanesia (0.1%)
- Micronesia/Polynesia (0.01%)

Estimated Incidence Rate of cancer 2020 to 2040 in MENA in thousands.



In Egypt, the Incidence rate will increase by +74.7% in 2040 compared with 2020.

The highest incidence rate in 2040 will increase in Qatar by 272.9% followed by UAE by 231.7%.



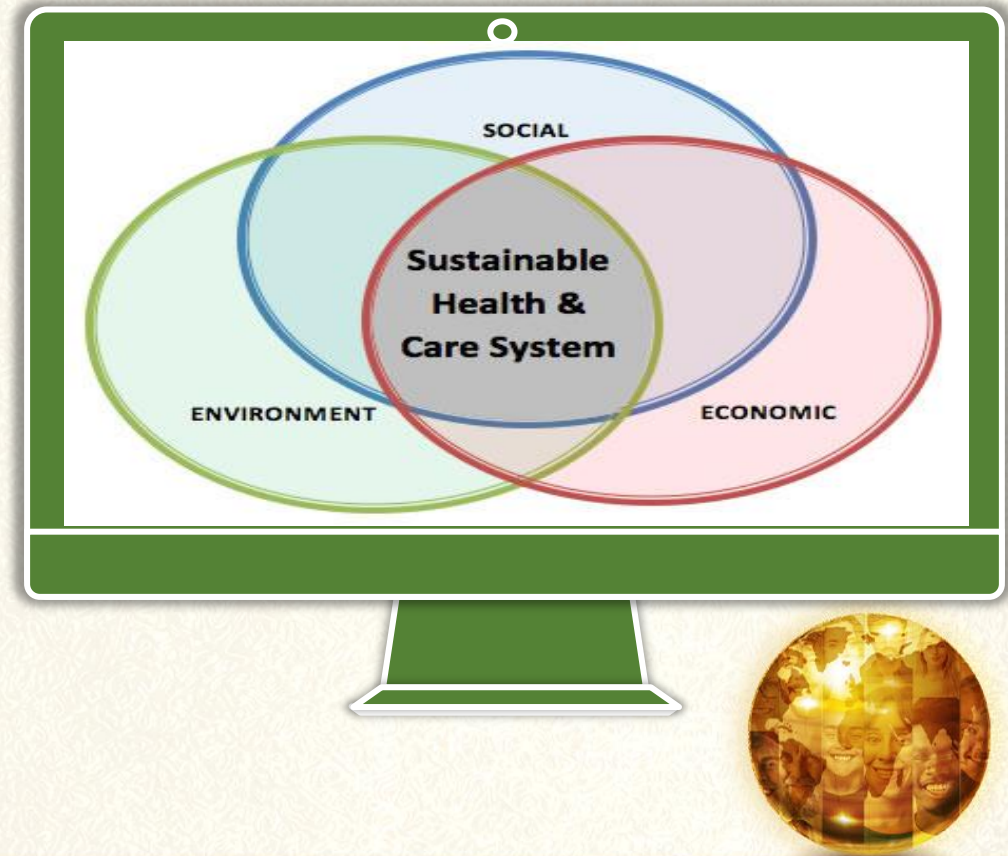


How can we integrate sustainability in Oncology Nursing ?!



Integration of Sustainability in nursing care for oncology patients

Sustainable nursing practice for oncology patients integrate environmental, social, and economic sustainability into daily nursing care. These practices focus on reducing waste, conserving resources, and maintenance of patients' health and wellbeing.



Waste Reduction and Eco-friendly Practices


Minimizing single-use items


Proper waste segregation

Participate in Recycling programs



Energy Conservation and Resource Efficiency

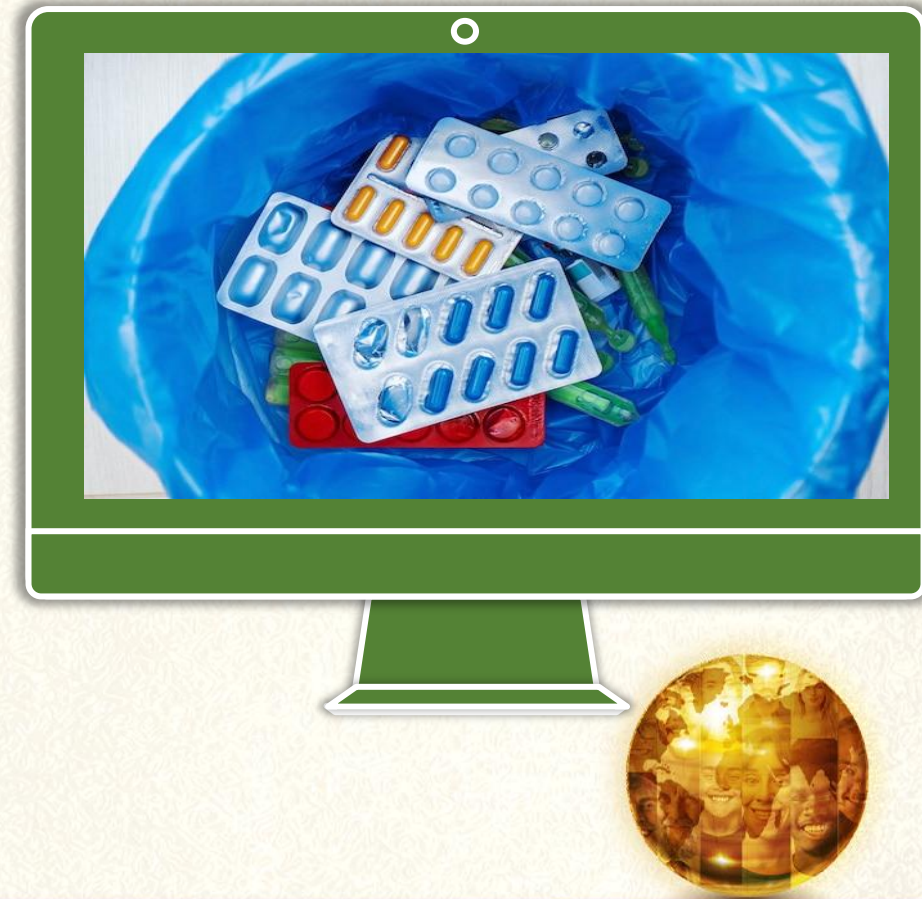
 Reduce electricity consumption and turning off monitors, lights, and other electrical devices when not in use.

 Optimize the use of water, and other resources, and limiting overuse of supplies.



Sustainable Medication Management

Oncology nurse can minimize pharmaceutical waste by collaborating with pharmacists to ensure optimal use of medications and prevent overstocking and minimize expired drugs.



Safe Disposal of Medication

Oncology treatments often involve complex medications that can be harmful to the environment if not disposed of properly. Nurses should follow protocols for safely disposing equipment contaminated with chemotherapeutic agents.

Chemotherapy Waste Disposal

<p>WHAT GOES INTO A CT22?</p> <p>SHARPS ONLY</p>  <ul style="list-style-type: none"> ▶ Sharps used in chemotherapy treatment, or those contaminated with chemotherapy drugs. 	<p>WHAT GOES INTO A CT64?</p> <p>NO SHARPS</p>  <ul style="list-style-type: none"> ▶ Waste resulting from chemotherapy treatment that is contaminated with chemotherapy drugs, including vomit bags, disposable theatre wraps and gowns, bandages, dressings, swabs and gauze, gloves and surgical masks.
--	---





☞ Maintenance of patients Physical wellbeing

☞ Educating oncology patients about lifestyle changes.

☞ Focus on palliative care and symptom management reduces unnecessary interventions and hospitalizations, contributing to resource efficiency.



⌘ Maintenance of Psychosocial and Emotional Sustainability

Psychological Support For Patients

Psychological Support For caregiver

Psychological Support For staff



Sustainable Use of
Technology :

Remote patient
monitoring
(RPM)

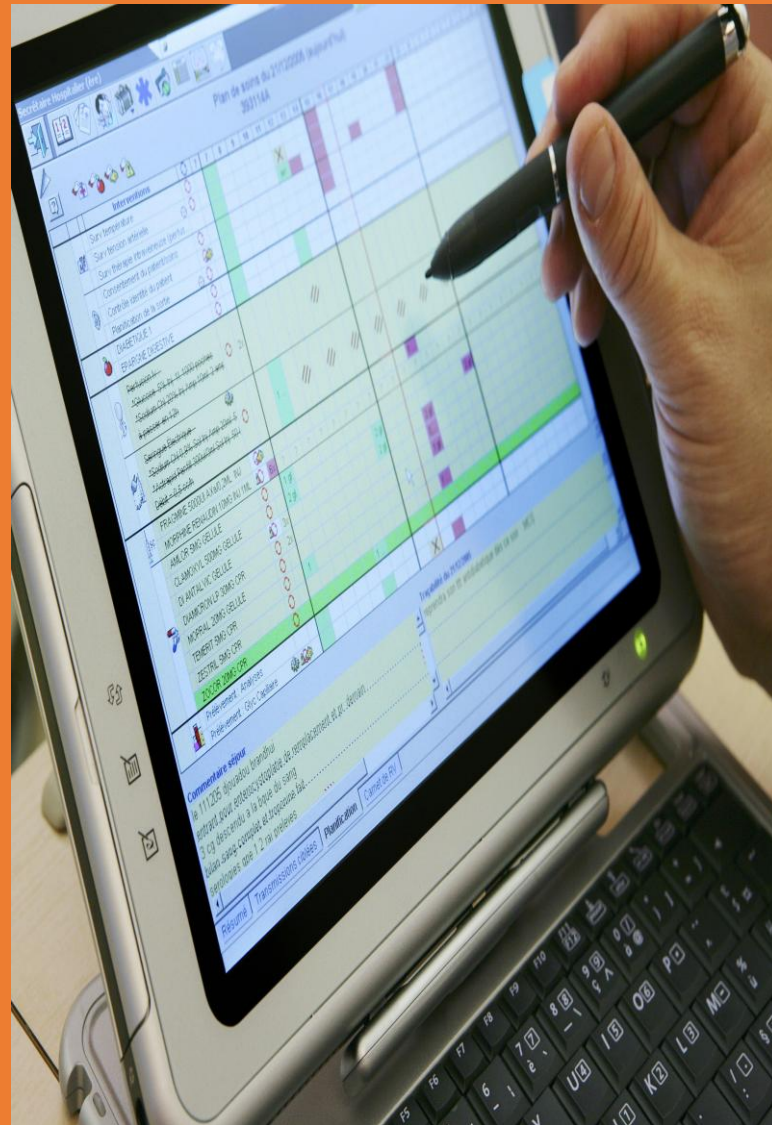


**Sustainable Use of
Technology**

**Mobile Health
(mHealth)
Applications**



**Sustainable Use of
Technology
Electronic
Health Records
(EHRs)**



Sustainable Use
of Technology

Robotics and
Automation



Applications for integrating sustainability in oncology patients in Egypt

Nurses have a significant role in Egypt's transition towards sustainability through participation in screening, early diagnosis and treatment of chronic diseases. The “100 Million Healthy Lives” campaign, was launched in 2014 in response to the high prevalence of hepatitis C which is a leading risk factor for hepatocellular carcinoma.



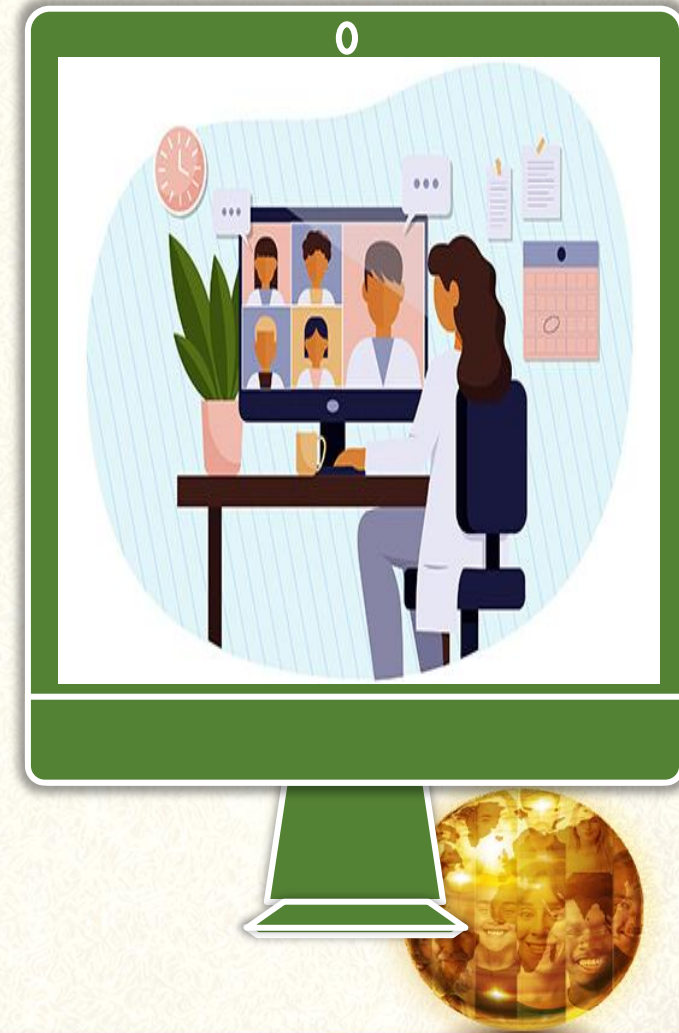
Applications for integrating sustainability in oncology patients in Egypt

In 2019, the Egyptian Women's Health Initiative was launched to increase the early detection of breast cancer, with over 34m women screened for breast cancer as of March 2023.



Applications for integrating sustainability in oncology patients in Egypt

The Ministry of Health and Population (MOPH) and the Ministry of Communications and Information Technology (MCIT) are working together on several electronic health (e-Health) programs to enhance and improve healthcare services as part of Egypt's Vision 2030 plan. One of the programs, includes developing telemedicine services in remote and under-served areas of Egypt to develop sustainable rural communities.



Conclusion

In conclusion, integrating sustainability into oncology nursing is essential for both patients and the environment. **For the environment** by adopting eco-friendly practices, reducing waste, and optimizing resource use and **for patients** by ensuring that, the care is equitable, cost-effective, and accessible to all patients through providing physical, psychosocial and patient-centered care in order to improve the well-being of both patients and their families.



“Finally be the change you wish to see in the world”



References

- World Health Organization (2023) [Available from: <https://www.who.int/news-room/fact-sheets/detail/cancer>]
- Katoue MG, Cerda AA, García LY, Jakovljevic M. (2022). *Healthcare system development in the Middle East and North Africa region: Challenges, endeavors and prospective opportunities*. *Front Public Health*. 2022;10:10457.
- Egypt Today. (2023) Available from: <https://www.egypttoday.com/Article/>
- Ahram online (2022). *Egypt launches national initiative for early detection, treatment of liver cancer*. *Cario*. 2022 [Available from: <https://english.ahram.org.eg/NewsContent/1/1236/463614/Egypt/Health/Egypt-launchesnational->
- Egyptian Ministry of Health and Population (2022). *Policy - Egypt Multisectoral Action Plan For Noncommunicable Diseases Prevention and Control 2018 – 2022* Egypt: Available from: <https://extranet.who>
- Urquhart, R., Kendell, C., Cornelissen, E., Madden, L. L., Powell, B. J., Kissmann, G., ... & Bender, J. L. (2020). Defining sustainability in practice: views from implementing real-world innovations in health care. *BMC health services research*, 20, 1-7.
- Bray, F., Laversanne, M., Sung, H., Ferlay, J., Siegel, R. L., Soerjomataram, I., & Jemal, A. (2024). Global cancer statistics 2022: GLOBOCAN estimates of incidence and mortality worldwide for 36 cancers in 185 countries. *CA: a cancer journal for clinicians*, 74(3), 229-263.





Thank you!

