

Role of Diffusion-Weighted Magnetic Resonance Imaging in the Diagnosis of Hepatic Focal Lesions

Ahmed Okasha Mohammed¹, Mohamed Mostafa Ali², Hoda Rabea Hassan¹, Wael Mohammed Wagdy*¹

¹Radiodiagnosis Department, ²Clinical Oncology Department,

Faculty of Medicine, South Valley University, Egypt

*Corresponding author: Wael Mohammed Wagdy, Mobile: (+20) 01005651501, Email: massa2000@yahoo.com

ABSTRACT

Background: Diffusion-weighted imaging (DWI) is a novel imaging technique with a growing application in onco-imaging. This modality evaluates the diffusion of water molecules in various tissues, which is restricted in hypercellular regions such as malignant tissue. Apparent diffusion coefficient (ADC) is a method that can quantify the degree of restriction in tissues and can have diagnostic roles in the characterization of hepatic lesions.

Aim of the Work: To study the role of diffusion-weighted MRI sequence with quantitative ADC measurements as a useful tool in the differentiation between benign and malignant liver lesions.

Patients and Methods: The current study was carried out on thirty adult patients, 24 males (80%), and 6 females (20%). They were presented to Qena University Hospitals at the Radiodiagnosis Department.

Results: Both, qualitative evaluation of high b-value DW-MR images and quantitative evaluation of ADC maps are employed for lesion characterization. The ADC values of benign lesions are significantly higher than those of malignant lesions, with variable degrees of overlap between the pathological entities.

Conclusion: DW MR imaging has the potential to be a reasonable alternative technique to contrast-enhanced imaging.

Keywords: DWI, Hepatic focal lesions, ADC.

INTRODUCTION

Liver diseases have been known liver size and functions but the assessment of the exact pathology is grossly inadequate. Focal liver disease is a common diagnostic problem referred to the radiologists for evaluation owing to its nonspecific clinical presentation and marked inter-observer variation on clinical examination⁽¹⁾.

The liver is considered a common site for many benign, primary malignant and metastatic focal lesions. Accurate detection and characterization of these tumors are crucial before treatment to ensure correct staging, to prevent tumors from being falsely rated as inoperable and patients with inoperable tumors from being scheduled for surgical procedures⁽²⁾.

Today, focal masses are diagnosed using ultrasonography (USG) and/or computed tomography (CT). Additionally, magnetic resonance imaging (MRI) is preferred when further characterization of these masses is needed⁽¹⁾.

Ultrasound has a high sensitivity (Se) for FLLs detection but with low specificity (Sp) for discriminating between different entities. CT is recommended in patients with known malignancy for staging, and in patients with chronic liver disease or even in otherwise healthy persons for confirmation of a suspected liver tumor detected in the US. MRI is considered the imaging technique with the best Se and Sp for FLL diagnosis. Diffusion-weighted imaging (DWI) is a relatively recent non-contrast imaging tool that has a high contrast resolution allowing accurate FLLs detection and characterization⁽³⁾.

Diffusion-weighted imaging (DWI) has been

reported to be useful for the early detection of small focal hepatic lesions. Moreover, DWI offers the possibility to obtain criteria for lesion characterization without the need for contrast agent administration by quantifying diffusion effects via apparent diffusion coefficient (ADC) measurements, with better results compared with those of conventional MR imaging⁽²⁾.

DWI could characterize specific tissue properties without any harm to patients, especially beneficial for those who are at risk for complications of a biopsy procedure⁽⁴⁾.

AIM OF THE WORK

The present work aimed to study the role of Diffusion-Weighted Magnetic Resonance Imaging (DW MRI) & ADC in the detection of hepatic focal lesions and its ability to differentiate between benign and malignant hepatic focal lesions.

PATIENTS AND METHODS

The current study was performed in Qena University Hospitals, where thirty patients with hepatic focal lesions were included in this study. All patients underwent US before MR examination.

Inclusion Criteria:

1. Patients with hepatic focal lesions diagnosed by US or CT.
2. Hepatic focal lesion more than 10 mm.
3. Age > 18 years.

Exclusion Criteria:

1. Patients who have a heart pacemaker.
2. Patients who have a metallic foreign body.



This article is an open access article distributed under the terms and conditions of the Creative Commons Attribution (CC BY-SA) license (<http://creativecommons.org/licenses/by/4.0/>)

3. Young patients < 18 years.
4. Hepatic focal lesion less than 10 mm.
5. Patients with hepatic coma.

The patients were subjected to the following:

- Full clinical assessment including; recording of age, sex, and clinical presentation.
- Laboratory investigations {Alpha fetoprotein}.
- Abdominal MRI (pre- and post-contrast (Dynamic) study and diffusion-weighted imaging) done for all patients.
- The results were compared to the laboratory results, and other previous radiological findings and to the typical picture of lesions in dynamic MRI.

Ethical approval:

This study was conducted under the Helsinki's declarations, **the study was approved by the Ethics Board of South Valley University** and written informed consent was obtained from all patients.

MR Examination:

Conventional MRI, post-Gd- DTPA dynamic, and diffusion MR imaging studies were performed. First; characterization and detection of focal lesions were performed; second, the diffusion images with ADC values were reviewed. MR imaging was performed on a high field system (1.5 Tesla) magnet units (Philips Achieva) using a phased array coil to cover the whole liver.

MR Protocol:

Pre-contrast imaging included:

- T1 weighted (T1W) images: repetition time TR=10msec, echo time TE=4.58msec, matrix 179x320, slice thickness 7-8mm, slice gap 1- 2 mm, and FOV 355mm.
- T2 weighted (T2W) images (single shot free breathing): TR \geq 445msec, TE=26-28 msec, matrix (180-200)x240, slice thickness 7-8mm, slice gap 1- 2mm, and FOV 365.
- T2 SPAIR (Spectral Attenuated Inversion Recovery) fat suppression sequence: TR \geq 400msec, TE=80msec, matrix 204x384, slice thickness 7-8mm, slice gap 1-2mm and FOV 365.
- In phase and out phase gradient echo sequence (Dual/FFE): TR= 75-100msec, TE=4.6msec for in-phase and 2.3msec for out-phase, matrix 143x240, slice thickness 7-8mm, slice gap 0mm, and FOV 345.

Dynamic study:

This dynamic study was performed after bolus injection of 0.1mmol/kg body weight of Gd-DTPA at a rate of 2ml/s, flushed with 20ml of sterile 0.9% saline solution through the antecubital vein. The injection of contrast media and saline solution was performed manually. Dynamic imaging using T1 THRIVE (High-Resolution Isotropic Volume Examination) technique was performed in a triphasic way [arterial phase (16-20 sec.), Porto-venous phase (45-60 sec.) and delayed

equilibrium phase (3-5 min.)] after administration of the contrast medium.

Diffusion study:

Respiratory-triggered fat-suppressed single-shot echoplanar DW imaging was performed in the transverse plane with tri-directional diffusion gradients by using b values (0, 500&1000) sec/mm² to increase sensitivity to cellular packing. Parallel imaging with generalized auto-calibrating partially parallel acquisition (GRAPPA) with an acceleration factor of two was applied to improve image quality. The other parameters were as follows: repetition time (TR) \geq 1880 msec, echo time (TE) = 70 msec, number of excitations (NEX)=3, matrix 256x256, slice thickness 7- 8mm, slice gap 1-2mm, scan time 3-4min with a field of view as small as possible with 52% rectangular field of view.

Imaging Evaluation:

The morphological features of each lesion were recorded included size, shape, margin, and signal characteristics, the pattern of enhancement in the dynamic imaging as well as the number and size of the detected focal lesions. Then, the provisional diagnosis was reported. Second, we reviewed the diffusion images with ADC values for final radiological detection and characterization of focal lesions.

The results were compared to laboratory and other radiological findings (dynamic MRI) in all patients.

ADC Calculation:

The mean ADC of each detected focal lesion is measured by drawing a region of interest (ROI) over the lesion. The ADC was measured twice and the two measurements were averaged. To ensure that the same areas were measured, regions of interest were copied and pasted from DW images to ADC maps.

Statistical analysis

Recorded data were analyzed using the statistical package for social sciences, version 20.0 (SPSS Inc., Chicago, Illinois, USA). Quantitative data were expressed as mean \pm standard deviation (SD). Qualitative data were expressed as frequency and percentage. Independent-samples t-test of significance was used when comparing two means. Chi-square (χ^2) test of significance was used to compare proportions between two qualitative parameters. The confidence interval was set to 95% and the margin of error accepted was set to 5%. The p-value was considered significant as the following: P-value <0.05 was considered significant. P-value <0.001 was considered as highly significant & P-value >0.05 was considered insignificant.

RESULTS

The current study was carried out on thirty adult patients of both sex; all patients were presented to Qena university hospitals at the Radiodiagnosis Department. Thirty patients were included in this study, 24 males (80%) and 6 females (20%).

Table (1): Numbers of lesions in cirrhotic and non-cirrhotic liver

	Number of lesions	Percent
Cirrhotic liver	14	30%
Non-cirrhotic liver	32	70%

32 out of 46 lesions were found in non-cirrhotic liver, 17 of them was discovered by the abdominal US during the investigation for follow up of primary malignant, while the rest were accidental during abdominal U/S performed for abdominal pain or routine workup before the abdominal operation, while the other 14 lesions found in cirrhotic liver and were coming for follow up as in table (1). All cirrhotic patients were suffering from HCV.

Table (2): MRI sequences of the lesions.

Lesion	T1	T2	Dynamic	DW	ADC
CYST	hypo intense	hyper intense	Not enhanced	facilitated	2.95 +/- 0.36x10 ⁻³
HEMANGIOMA	hypo intense	hyper intense	Nodular enhanced	restricted	2.2 +/- 0.16x10 ⁻³
HCC	hyperintense	hyperintense	Early enhanced, early washout	restricted	0.88 +/- 0.16 x10 ⁻³
METS	hypointense	hyperintense	Early enhanced, early washout	restricted	1.03 +/- 0.12x10 ⁻³

In our study HCC show high signal on T1 WIs and high signal on T2 WIs and T2 FAT SAT WIs. On the post-contrast phases, the lesion showed mild enhancement in the arterial phase and early contrast washout in the subsequent phases with capsular enhancement in the delayed phase while mets show hypo-intense signals in T1 WIs and hyper-intense signals on T2 WIs.

Haemangioma shows hypo-intense signals in T1 WIs and hyperintense signals on T2 WIs and peripheral nodular enhancement in the dynamic phase. While cysts not enhanced in dynamic phase as demonstrated in Table (2).

ADC values:

- ADC values were obtained for all 46 focal hepatic lesions detected at consensus reading.
- The mean ADC value of the 15 benign lesions was 2.53 +/- 0.36
- ×10⁻³ mm²/sec. ADC values of benign lesions were between 1.8 +/-0.36 X10⁻³ and 3.3 +/- 0.36×10⁻³mm²/sec. The highest mean ADC value was for simple cysts.
- The ADC values of the 31 malignant lesions were between 0.50 and 1.3 +/- 0.16×10⁻³mm²/sec, with a mean value of 0.94+/- 0.16 ×10⁻³ mm²/sec Among the malignant lesions, the lowest mean ADC value was for breast metastasis; while some HCC focal lesion was the highest mean ADC value.
- The difference between the mean ADC values of benign and malignant lesions was statistically significant (P < 0.0001).
- No statistically significant differences in ADC values among the different benign lesions or the

different malignant lesions.

Table (3): Mean ADC value of the different lesions.

Lesion type	Mean ADC value (mm ² /sec)
HCC	0.88 +/- 0.16 x10 ⁻³
Cyst	2.95 +/- 0.36x10 ⁻³
Hemangioma	2.2 +/- 0.16x10 ⁻³
Metastasis	1.03 +/- 0.12x10 ⁻³

Clinical history: A 55-year-old male patient presented with right hypochondrial pain and yellowish discoloration of the sclera. On US examination: The liver was cirrhotic with evidence of a hyperechoic right hepatic lobe focal lesion.

Laboratory investigations: AFP: 500 ng

On MR examination: The liver appeared cirrhotic and the right hepatic lobe was the seat of a small focal lesion at segment VIII, eliciting high signal on T1 WIs, and high signal on T2 WIs and T2 FAT SAT WIs. On the post-contrast phases, the lesion showed mild enhancement in the arterial phase and early contrast washout in the subsequent phases with capsular enhancement in the delayed phase. The presence of fat content within the lesion was noticed by signal intensity drop of the lesion in the out phase compared to the in-phase image in which the lesion was bright.

On DWIs: The lesion appeared bright, and became brighter with increasing the b value. On the ADC map, the lesion became dark. Findings denote restricted diffusion.

Mean ADC value: 0.90x10⁻³ mm²/sec.

Suggested MR diagnosis: Fat containing Hepato-cellular Carcinoma.

CASE 1:

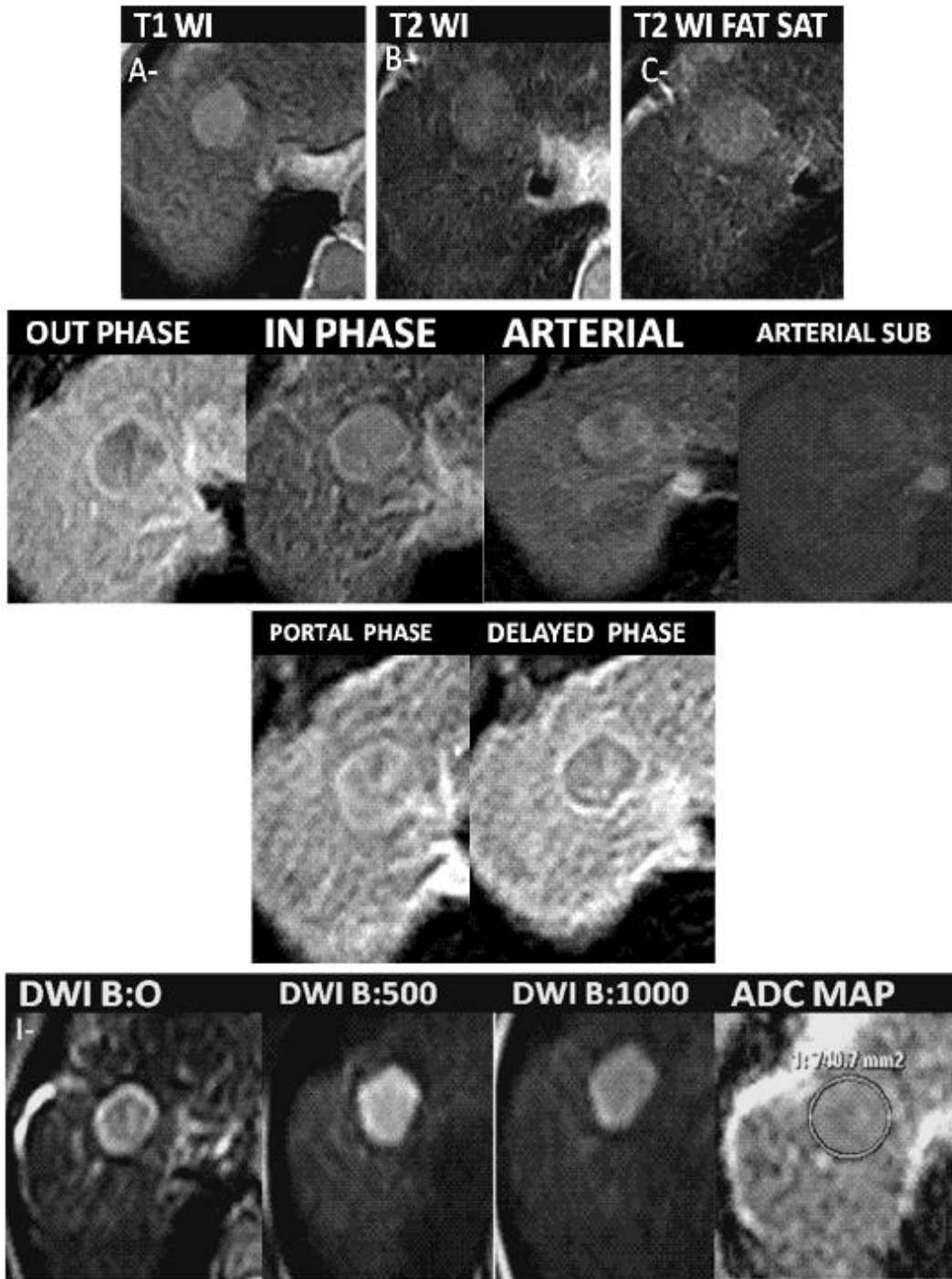


Fig. (1): (A) Axial unenhanced T1W image: high signal intensity lesion within the right hepatic lobe. (B), (C) Axial T2W & Axial T2 fat sat images: mildly increased signal intensity lesion. (D), (E) Axial out-phase & Axial in-phase images: showed a signal drop of the lesion in the out-phase compared to the in-phase. (F) The axial gadolinium-enhanced arterial-phase image showed mild enhancement of the lesion as evident by the arterial subtraction image. (G), (H) Axial portal gadolinium-enhanced & Axial delayed gadolinium-enhanced images showed washout of the lesion with capsular enhancement. (I) DWI (b 0,500,1000) showed the lesion to have increased signal intensity owing to restricted diffusion. Axial ADC map showed a lesion of mildly decreased signal intensity proving that the high signal intensity on DWI was not T2 shine-through effect, but a truly restricted diffusion.

CASE 2:

Clinical history: A 59 year-old female patient, known case of breast carcinoma underwent a mastectomy and followed by chemotherapy.

On follow up the US for metastatic workup the liver showed multiple hypoechoic focal lesions.

On MRI examination: The liver showed multiple innumerable focal lesions eliciting hypo-intense signals in T1 WIs and hyper-intense signals on T2 WIs.

On DWIs: The lesions appeared bright. On increasing the b value the center of most lesions became dark while the periphery became brighter. On the ADC map, the bright periphery became dark while the dark center became bright. These findings denote restricted diffusion at the periphery of the lesions while the center of the lesions showed facilitated diffusion of intrinsic tissue necrosis.

ADC values of 10 lesions were measured; $0.86 \times 10^{-3} \text{ mm}^2/\text{sec}$ $1.08 \times 10^{-3} \text{ mm}^2/\text{sec}$ $1.06 \times 10^{-3} \text{ mm}^2/\text{sec}$ $1.19 \times 10^{-3} \text{ mm}^2/\text{sec}$ $1.26 \times 10^{-3} \text{ mm}^2/\text{sec}$ $0.95 \times 10^{-3} \text{ mm}^2/\text{sec}$ $1.01 \times 10^{-3} \text{ mm}^2/\text{sec}$ $0.92 \times 10^{-3} \text{ mm}^2/\text{sec}$ $1.24 \times 10^{-3} \text{ mm}^2/\text{sec}$ $1.02 \times 10^{-3} \text{ mm}^2/\text{sec}$

Mean ADC value; $1.04 \times 10^{-3} \text{ mm}^2/\text{sec}$

Suggested MR diagnosis: Breast carcinoma with metastatic liver deposits

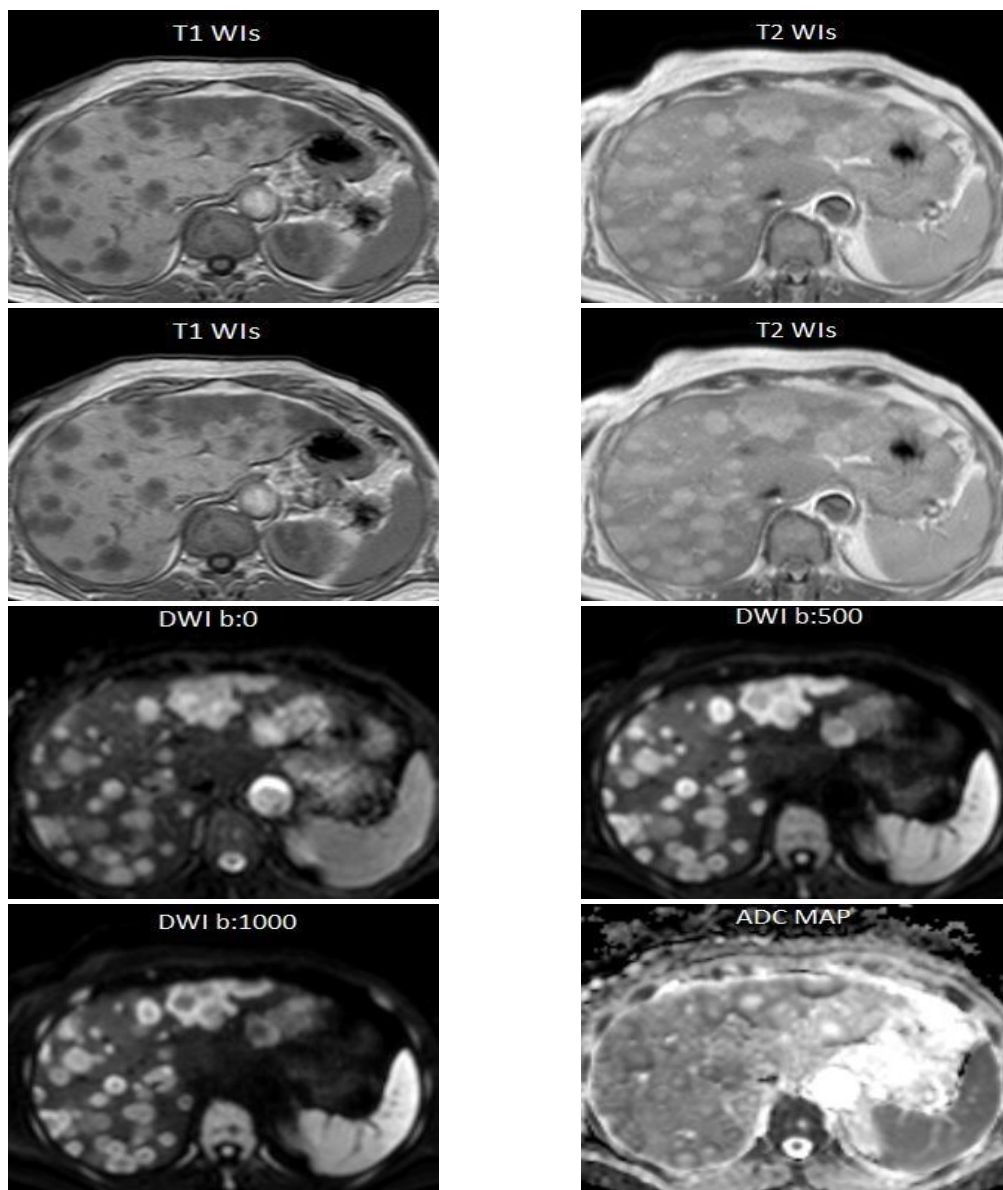


Fig. (2): Multiple innumerable focal lesions eliciting hypo-intense signals in T1WIs and hyperintense signals on T2WIs. On increasing the b value the center of most lesions became dark while the periphery became brighter. On the ADC map, the bright periphery became dark while the dark center became bright.

DISCUSSION

The liver is an organ in which various benign or malignant, primary or secondary masses can be detected. Today, focal masses are diagnosed using ultrasonography and/or computed tomography. Additionally, magnetic resonance imaging is preferred when further characterization of these masses is needed. MRI has many advantages (e.g., high contrast resolution, the ability to obtain images in any plane, lack of ionizing radiation, and the safety of using particulate contrast media rather than those containing iodine) that make it a favored modality⁽⁷⁾.

DW-MRI provides unique insight into tissue cellularity, tissue organization, the integrity of cells and membranes, as well as the tortuosity of the extracellular space, which can help detect malignant diseases, and for distinguishing tumor tissues from non-tumor tissues⁽⁸⁾.

The current study was conducted including thirty patients, 24 males, and 6 females, with age ranging from 40-83 years and mean age of 60.2 years.

In our study diffusion images were obtained before intra-venous contrast administration which was also mentioned⁽⁹⁾ which stated that DW MR imaging of the liver is usually performed before contrast material administration, although performing DW MR imaging after the administration of contrast did not appear to significantly affect ADC calculations⁽⁸⁾.

In our study, three different b values were conducted which was in line with the study performed⁽¹⁰⁾

This study was conducted with high b value (500&1000 sec/mm²) to overcome the effect of capillary perfusion and water diffusion in extracellular extravascular space, as high b value will result in the reduction of signal from moving protons in the bile ducts, cysts, vessels, and fluid in the bowel. This will result in an increased contrast between the lesion and liver. Furthermore, the differences in the relative contrast ratio between malignant and benign lesions were increased with a high b value. This was similar to the b value used in studies carried by⁽¹¹⁻¹³⁾.

All cystic lesions showed facilitated diffusion, where they showed a reduction of signal intensity on increasing the b-values, and those which didn't show the reduction of the signal showed high signal on ADC map, which also reflects facilitated diffusion. On the other hand, all solid lesions showed restricted diffusion evidenced by the increased signal on increasing the b-values and low signal on ADC maps.

CONCLUSION

DW MR imaging has the potential to be a reasonable

alternative technique to contrast-enhanced imaging.

Disclosure: The authors report no conflicts of interest in this work.

Source of funding: by self.

REFERENCES

1. **Nijalingappa M, Naveen S (2015):** Role of Diffusion-Weighted Magnetic Resonance Imaging in Focal Liver Lesions. *Journal of Dental and Medical Sciences*, 14: 10-22.
2. **Elbarbary A, Elahwal H, Elashwah M (2015):** Role of Diffusion-Weighted Magnetic Resonance Imaging in the evaluation of hepatic focal lesions. *The Egyptian Journal of Radiology and Nuclear Medicine*, 46:325-334.
3. **Cosmin C, Liliana C, Diana- Ioana F et al. (2015):** Diffusion-Weighted Magnetic Resonance Imaging for the Classification of Focal Liver Lesions as Benign or Malignant. *J Gastrointest Liver Dis.*, 24(3): 309-317.
4. **Zhao X, Zhou S, Wang D et al. (2015):** Differential Diagnosis of Malignant Biliary Tract Cancer from Benign Tissues using Apparent Diffusion Coefficient Measurements with Diffusion-Weighted Imaging in Asians. *Asian Pacific Journal of Cancer Prevention*, 16:6135-6140.
5. **Patil S, Sethi M, Kakar S (2014):** Morphological Study of Human Liver and its Surgical Importance. *International Journal of Anatomy and Research, Int J Anat Res.*, 2(2): 310-314.
6. **Rutkauskas S, Gedrimas V, Pundzius J et al. (2006):** Clinical and anatomical basis for the classification of the structural parts of the liver. *Medicina (Kaunas)*, 42(2): 98-106.
7. **Demir Öİ, Obuz F, Sağol Ö et al. (2007):** Contribution of diffusion-weighted MRI to the differential diagnosis of hepatic masses. *Diagn Interv Radiol.*, 13:81-8.
8. **Thoeny HC, De Keyzer F (2007):** Effect of vascular targeting agent in rat tumor model: dynamic contrast-enhanced versus diffusion-weighted MR imaging. *Radiology*, 237:492-499.
9. **Taouli B, Dow-Mu K (2010):** Diffusion-weighted MR imaging of the liver *Radiology*, 254 (1): 202-209.
10. **Qayyum A (2009):** Diffusion-weighted Imaging in the Abdomen and Pelvis: Concepts and Applications. *Radio Graphics*, 29:1797- 1810.
11. **Parikh T, Drew SJ, Lee VS et al. (2008):** Focal liver lesion detection and characterization with diffusion-weighted MR imaging: comparison with standard breath-hold T2-weighted imaging. *Radiology*, 246:812-822.
12. **Koike N, Cho A, Nasu K et al. (2009):** Role of diffusion-weighted magnetic resonance imaging in the differential diagnosis of focal hepatic lesions *World J Gastroenterol.*, 15: 5805-5812.
13. **Hosny IA, Janshir J (2010):** Diffusion MRI of focal liver lesions *Pak J Radiol.*, 20: 1-7.