
SPECTRAL P-WAVE MAGNITUDES, MAGNITUDE SPECTRA AND OTHER SOURCE PARAMETERS FOR THE 1990 SOUTHERN SUDAN AND THE 2005 LAKE TANGANYIKA EARTHQUAKES

HESHAM HUSSEIN MOHAMED MOUSSA

Seismology Department, National Research Institute of Astronomy and Geophysics, Helwan 11421, Cairo, Egypt.

Abstract

Teleseismic Broadband P-wave seismograms radiated by May 1990 Southern Sudan and December, 2005 Lake Tanganyika earthquakes at different azimuths have been analyzed on the basis of magnitude spectra. The two earthquakes represent the largest shocks in the East African Rift System and its extension in southern Sudan. Both events have the same surface wave magnitude ($M_S=7.2$). The maximum average spectral magnitude for the first event was determined as 6.79 at 4 seconds period compared to 6.33 at 4 seconds period estimated from the second event. The other source parameters for the two earthquakes were also estimated. The first event had a seismic moment over fourth that of the second event. The two events are radiated from patches of faults having radii of 13.05 and 7.85 km respectively. The average displacement and stress drop are estimated to be 0.56 m and 1.65 MPa for the first event and 0.43m and 2.20 MPa for the second one. The source parameters, which describe inhomogeneity of the fault, are also determined from the magnitude spectra. These additional parameters are complexity, asperity radius, displacements across the asperity and ambient stress-drop. Both events produce moderate rupture complexity. Compared to the second event, the first event is characterized by relatively higher complexity, a low average stress-drop and a high ambient stress. A reasonable explanation for the relative variations in these parameters is that the source for each event is located at different tectonic environments. The focal mechanism solutions supplement such observation.

Introduction

In the recent years, two earthquakes of magnitude ($M_S = 7.2$) struck the East African Rift System and its extension in the Southern Sudan. The first one struck the most southern part of Sudan at the border with Uganda, about 50 km east of the Upper River Nile on 20 May, 1990 while the second one struck Tanganyika lake region, Congo-Tanzania and its surroundings on December 12, 2005 (Fig. 1) The first event is believed to be the largest earthquake ever recorded in Sudan since the beginning of the instrumentally recorded seismicity. The shock was felt in Sudan, Uganda and Kenya. At Juba area of Sudan, some buildings were damaged. According to the seismic history of the region, the area of the 1990 earthquake had been recognized as the site of two large earthquakes in 1850 and 1915 with a very low seismicity compared to the East African Rift system (Ambraseys and Adam,

1986). The relocated aftershocks indicate that the western branch of the East African Rift System propagates into the Southern Sudan Rift (Girdler and McConnell, 1994). The 1990 event was interpreted as left lateral motion along a NW-SE striking fault plane (Gaulon et al., 1992). The orientation of this nodal plane is parallel to Aswa Shear Zone (ASZ) (Girdler and McConnell, 1994) as shown in Fig.1. The latter joins the southeastern trending Sudan and Anza (Kenya) rifts with the northern part of the East African Rift system (Barazangi, 1983; Gaulon et al., 1992). It is a Late Precambrian large transverse structural feature which is characterized by horizontal left lateral reactivation movement during Cenozoic (Gaulon et al., 1992). The seismogenic area was also affected by shear zones parallel to ASZ suggesting that a structure parallel to ASZ is responsible for 1990 earthquake (Girdler and McConnell, 1994).

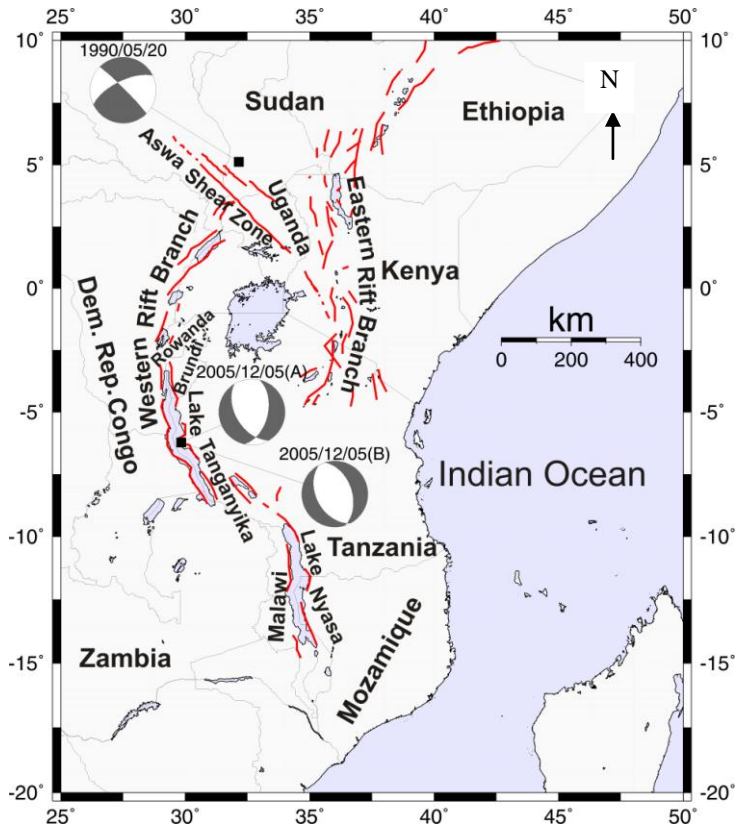


Fig.1. Focal mechanisms and epicenters for events used in this study area and the main East African Rift bounding faults. The 2005/12/05(A) is the Harvard CMT solution while 2005/12/05(B) is the NEIS solution.

The second event took place along the East African Rift valley approximately below the surface of Lake Tanganyika. The most widespread damage was reported at Kalemie, Congo where 300 houses were destroyed; a church was collapsed and at least six people were killed. It was also felt in Brundi, Tanzania, Rwanda, Uganda and Kenya. Lake Tanganyika is a part of the western branch of the 3000 km long East African rift system extending from Afar to Mozambique (**Rolet et al., 1991**). The East African Rift (EAR) is the most active continental rift which is a part of a spreading system that includes the Red Sea and the Gulf of Aden. This rift system broke apart the African and Arabian plates and it is further breaking apart the African plate. Rifting within East Africa began at the Afar triple junction approximately 25-40 million years ago and has since propagated southwards at an estimated rate of 2-5 cm/yr. (**Oxburg and Turcotte, 1974**). The Harvard CMT of Tanganyika event shows almost pure normal faulting mechanism on nodal planes striking at NNW and NNE respectively. However, the solution of NEIS also shows pure normal faulting mechanism, but with both nodal planes striking at NNW and dipping to ENE and WSW respectively. The two solutions suggest E-W to ENE-WSW trending extension, approximately perpendicular to the rift.

The main objectives of this study is to extract the source parameters of the 1990 Southern Sudan and the 2005 Lake Tanganyika earthquakes and to quantify the individual features of radiation process at the hypocenter from the teleseismic observations, based on the concept of magnitude spectra. The reality of the source parameters (fault length, seismic moment, stress drop and total seismic energy) derived from the spectral magnitudes depends on the determination of the corner period. Therefore, two methods were used to obtain this corner period. In this study, the asperity parameters (area and stress-drop) were also estimated assuming inhomogeneous fault model. Studying the source parameter of the individual events provides a potential data for earthquake engineering.

Method Of Analysis

In this work, the spectral magnitude technique has been applied to the two largest earthquakes that have been occurred in Lake Tanganyika of the East African Rift and its extension in the area of Southern Sudan Rift, using teleseismic broadband P waveform records. The concept of the spectral magnitude represents an updating of the magnitude and magnitude determination procedure. The spectral magnitude technique has been discussed by **Sarker and Duda, 1985; Kaiser and Duda, 1986 and Chowdhury and Duda, 1986**). It is a generalization of the body wave

magnitude. The body wave magnitude of a particular earthquake constitutes discrete samples of velocity density spectrum. The samples, being averaged corresponding to period ranges, are not always specified. The sampling of the spectra is strongly influenced by the band pass of the different seismometer-galvanometer systems. Therefore, different instruments usually yield different magnitude values for a given earthquake. Moreover, the body wave magnitude for the narrow-band systems (e.g. WWSSN) were widely used to quantify the P-wave radiation at periods usually shorter than the one of the maximum radiation. However, the introduction of broadband observations gives us an opportunity to record the whole spectrum of the signal in a wider band frequency range than that from the narrow band instruments. Applying a set of non overlapping narrow band pass filters, separated from each other by short increment to the broad band records, a number of band pass seismograms are obtained from which body wave magnitudes corresponding to the respective set of seismograms can be estimated. These are known as spectral magnitudes. The obtained sequence of spectral magnitudes is called the magnitude spectrum. The magnitude spectrum is a quasi-continuous estimate of the velocity density spectrum of the P -waves expressed in magnitude units. It represents the complete P-wave energy radiated from the source. The maximum of the magnitude spectrum and the corresponding period are the most characteristic quantities of the radiated spectrum for seismic events.

The magnitude spectrum $M_S(T)$ for a certain period T is related to the velocity density spectrum $S_I(T)$ through the following relation (**Duda and Yanovskaya, 1994**):

$$M_S(T) = S_I(T) + \sigma_I(\Delta, h, T) \quad (1)$$

Where I refers to either the vertical (Z) or radial (R) component and $\sigma_I(\Delta, h, T)$ is the P wave spectral calibration function on the basis of IASPI 91 velocity model and PREM Q models. Δ is the epicentral distance and h is the focal depth. The spectral magnitudes are estimated in frequency intervals with a moving average window having a width of one octave. Plotting the spectral magnitudes versus the period allow to estimate the corner period (T_0) of the maximum value of the spectral magnitudes.

Following **Kaiser and Duda (1988)**, the source parameters can be extracted using the P-wave magnitude spectrum which permits one to recognize the T_0 directly as the one corresponding to the maximum value of the magnitude spectrum ($m_{f_{\max}}$).

The corner period (T_0) is related to seismic moment (M_0) through the empirical relation,:

$$M_0 = 10^{(m_f)_{\max} - 0.7} T_0 \left[\frac{2 \cdot \rho_r \cdot C_r \cdot C_s^4}{\pi R_{\theta\phi}^2} \right]^{1/2} \quad (2)$$

where $\rho(r)$ is the density near the receiver, taken to be 2720 kg m^{-3} , C_r and C_s the P-wave velocities near the receiver and the source respectively are assumed to be 6100 m/s and 5800 m/s respectively and $R_{\theta\phi}$, the average radiation pattern coefficient, is given as a mean value of 0.44 .

The values of the corner periods can be used for estimating the fault radius of the seismic sources, using the model of **Brune (1970, 1971)** for a circular fault rupture is given by:

$$a_0 = 0.37 \cdot C_s \cdot T_0 \quad (3a)$$

To estimate the fault length L , the approximation that the fault length equals to $2a_0$ was used. Thus:

$$L = 0.74 \cdot C_s \cdot T_0 \quad (3b)$$

The values of M_0 and a_0 determined as described above, were used for estimation of the stress drop ($\Delta\sigma$) from the following equation:

$$\Delta\sigma = \frac{7}{16} \frac{M_0}{a_0^3} \quad (4)$$

(**Keilis-Borok, 1959**) as well as for the estimation of the average displacement (D_0) over a circular fault area is given from the equation:

$$D_0 = \frac{M_0}{\pi a_0^2 \mu} \quad (5)$$

where μ , the shear modulus of the fault material (**Brune, 1968**), is assumed to be $2.7 \times 10^{10} \text{ Pa}$.

Due to difficulties in the determination of the corner period (T_0) visually, at which the maximum magnitude occurs especially for complex source process earthquakes, the corner period was also estimated from the smoothed spectra, using

another two different approaches following **Duda and Kaiser, 1989**. The first one is the corner period (T_S), estimated from the equation:

$$T_S = \frac{\pi R_{\theta\phi} 10^{(m_f)_{\max} - 1.4}}{E_P} \quad (6)$$

(**Snoke, 1987**) where E_P is the total P wave energy radiated from the earthquake focus corrected for the signal outside the considered frequency band as proposed by **Duda and Kaiser, 1989**, is given by :

$$E_p = \int_0^{\infty} E_p(f) df \quad (7)$$

The energy spectral density of the source, $E_p(f)$, is related to the magnitude spectrum $m(f)$ through ;

$$E_p(f) = 10^{2m(f) - 1.4} \quad (8)$$

T_S in equation (6) is the corner period of the P-wave magnitude spectrum with total P-wave energy (E_P) and with maximum magnitude $m_f(\max)$ as determined from the observed spectrum, but with a shape corresponding to omega-square spectrum for the P-wave (**Aki, 1967; Brune, 1970**).

The second approach for measuring the corner period is the location of the first moment of the energy density spectrum, following the equation:

$$T_C = \frac{E_P}{\int_0^{\infty} E_P(f) f df} \quad (9)$$

T_C represents a weighted average value in case of complex spectra with several maxima. The rupture complexity can be measured using T_c and T_S defined by equations (7) and (8) through the following relation (**Duda and Kaiser, 1989**):

$$C = T_C / T_S \quad (10)$$

The rupture complexity is a measure of additional energy radiated at frequencies above the corner frequency; and therefore it reflects the high frequency ground motion (**Kaiser et al., 1996**). When the radiated spectrum can be described by the omega square model, it is expected that T_c and T_S are identical and $C = 1$. In practice,

the value of complexity (C) tends to vary from 0.5 to 2.5 for intermediate and large earthquakes (Kaiser, 1989). Following McGarr, 1981, the value of complexity (C) can be interpreted in terms of asperity model assuming inhomogeneous fault model. This model consists of failure of asperity of radius a_i within an annular faulted region of outer radius a_0 , followed by a broader scale dynamic readjustment of the whole fault plane. Knowing C permits to calculate the ratio between the most energetic asperity radius and the overall source radius a_0/a_i from the following equation:

$$\frac{a_0}{a_i} = 5.7(4C - 3) \tag{11}$$

Assuming that an annular region $a_i < a < a_0$ has been failed under an ambient fault stress, σ_{af} preceding the earthquake. σ_{af} measures the difference between the regional applied shear stress and the frictional stress that resist sliding across the fault zone. Essentially, the asperity fails with a stress drop ($\Delta\sigma_i$) that is in many times larger than the stress drop corresponding to the total zone of faulting, $\Delta\sigma$. The source parameters of the small dimension failure can be determined according to McGarr, 1981. The small scale stress drop $\Delta\sigma_i$ is;

$$\Delta\sigma_i = \frac{2}{3} \Delta\sigma \left(\frac{a_0}{a_i} \right)^2 \tag{12}$$

The corresponding average displacement owing to the failure of asperity is;

$$D_i = \frac{1.52}{\pi} \frac{\Delta\sigma}{\mu} \frac{a_0^2}{a_i} \tag{13}$$

The ambient fault stress σ_{af} is given approximately by;

$$\sigma_{af} = \frac{2}{3} \Delta\sigma \frac{a_0}{a_i} \left[1 + 0.06 \frac{a_i}{a_0} + 0.33 \left[\frac{a_i}{a_0} \right]^2 + 0.04 \left[\frac{a_i}{a_0} \right]^3 \right] \tag{14}$$

Data analysis

The waveform Data used in this study was retrieved from Incorporated Institutions for Seismology (IRIS) to estimate the spectral magnitudes, magnitude

spectra and source parameter for the 1990 Sudan and the 2005 Tanganyika Lake earthquakes. For the Sudan earthquake, only high quality seven seismograms recorded at teleseismic distances ($40^{\circ} < D < 50^{\circ}$) were available. For Lake Tanganyika earthquake, data was used from 22 stations at epicentral distances between 40° and 88° . Table.1 shows the parameters of the two earthquakes. The stations used in this study and azimuth to each station are shown in **Table 3 and Table 4**. Choice of the records is mainly based on their clarity and absence of noise. These records were instrumentally corrected prior to processing. The spectral magnitudes and the magnitude spectra for each one of the two earthquakes were computed by applying the PASTA program developed by **Roslov, 1994** to a time window of 60 seconds, started 5 seconds before the P-wave onset. A 10 % cosine tapering window is applied at both ends of the signal. The spectral magnitudes of the two earthquakes are calculated for each individual station in the period intervals with a moving average window of one octave wide with central periods of 0.25, 0.5, 1, 2, 4, 8, 16 and 32 second. Consequently, the spectral magnitudes of each earthquake are averaged. The average spectral magnitude values and their corresponding corner periods for the two earthquakes are listed in Table. 2. The plots of the spectral magnitudes for the two earthquakes as a function of the periods are shown in Figures 2 and 3.

In parallel, the source parameters for each earthquake were determined from the magnitude spectra recorded at different stations with different azimuths, using the corner period. Figure 4 shows the magnitude spectra of two waveforms recorded at different azimuths for the 1990 Sudan earthquake. The magnitude spectrum for three waveform data recorded at different azimuths for the 2005 Tanganyika Lake earthquake is presented in Figure. 5. The determined source parameters for these two earthquakes are presented in **Tables 3 and 4**. The seismic moment, M_0 , and fault length were determined from equations (2) and (3) respectively, using the corner period. T_0 is replaced by T_C in equations (2) and (3) when T_C is used for estimating the seismic moment. The stress drop $\Delta\sigma$ and displacement D_0 were also estimated using equations (4) and (5) respectively. The radiated seismic energy of the P-wave was determined from equations (7) and (8). The spectral complexity for the 1990 Sudan earthquake and the 2005 Lake Tanganyika earthquake was also investigated in terms of asperity model of the source using equations (10), (11), (12), (13) and (14). The obtained results are summarized in Table. 5.

Table 1. Epicentral parameters of the two analyzed earthquakes.

Event no.	Date	O.T	Lat.	Long.	Depth	m _b (ISC)	m _b (NEIC)	M _s (Harvard)
1	19900520	022201.18	05.071	32.160	15	6.5	6.7	7.2
2	20051205	121952.36	-06.149	29.785	18		6.4	7.2

Table 2. Average values of the spectral magnitudes for the two earthquakes listed in Table.1.

Event no.	Period	0.25	0.5	1.0	2.0	4.0	8.0	16.0	32.0
1	m _f	5.30	5.44	5.96	6.39	6.79	6.44	6.69	6.11
		± 0.07	± 0.04	± 0.05	± 0.05	± 0.05	± 0.04	± 0.05	± 0.05
2	m _f	5.10	5.45	6.00	6.26	6.33	6.18	6.20	5.07
		± 0.05	± 0.05	± 0.03	± 0.04	± 0.05	± 0.05	± 0.05	± 0.08

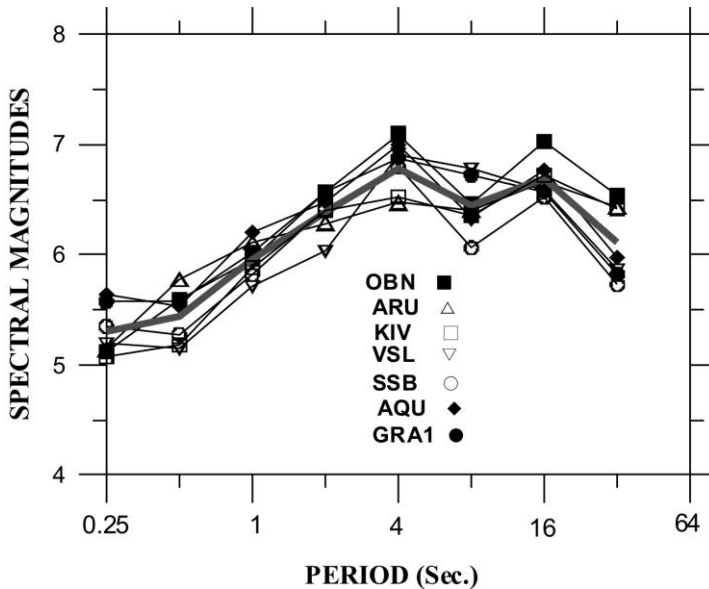


Fig.2. Spectral magnitudes for the individual stations of the 1990 Sudan earthquake and their average measurements (heavy line).

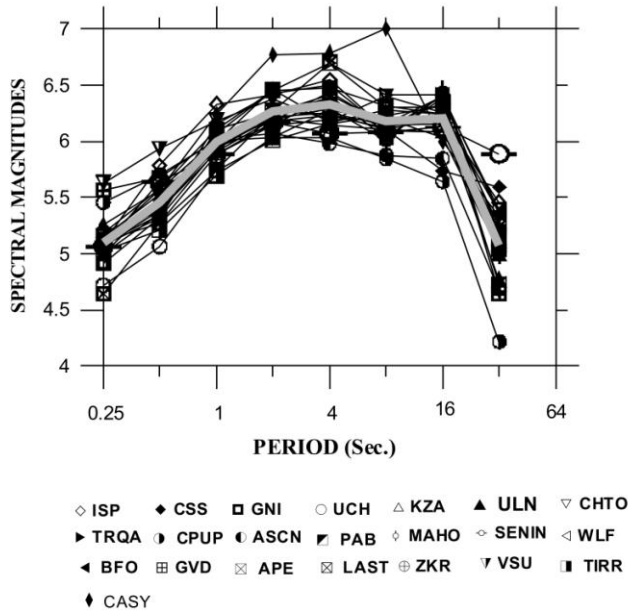
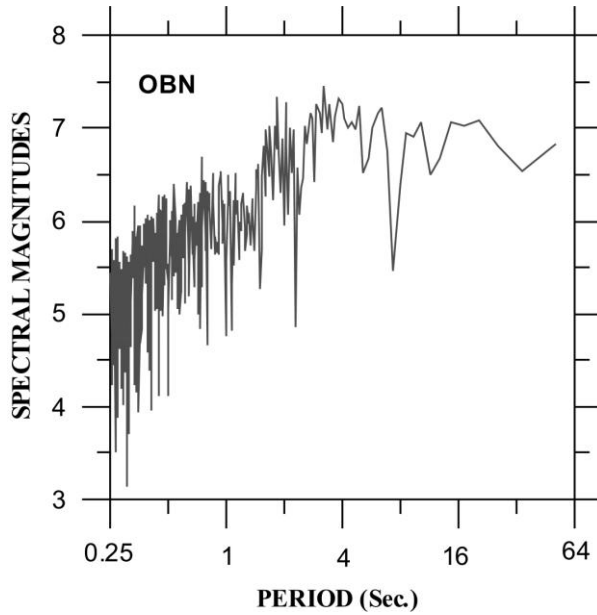


Fig.3. Spectral magnitudes for the individual stations of the 2005 Tanganyika Lake earthquake and their average values (heavy line).



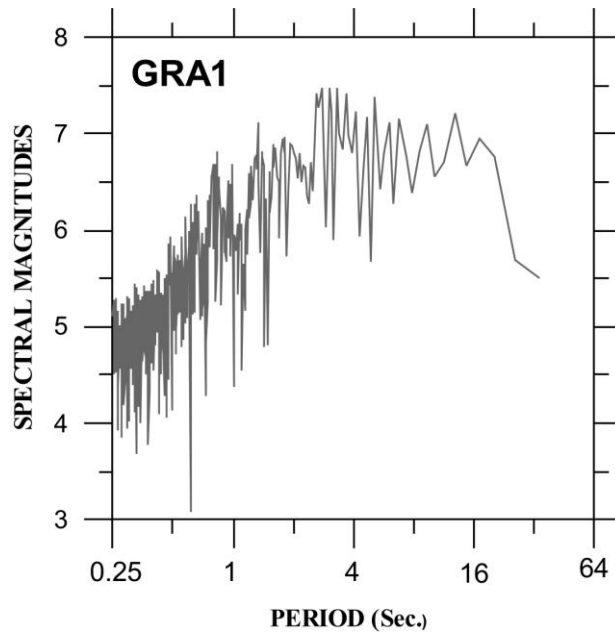


Fig.4. Magnitude spectra for some broadband records of the Sudan 1990 earthquake.

Table 3. Source parameters derived from the magnitude spectra of the May, 22 1990 Sudan earthquake

Station	Azimuth	Delta in Degree	m_f (max)	E_p (10^{12} J)	T_o (Sec.)	T_c (Sec.)	T_s (Sec.)	C	M_o (10^{18} Nm)	L (KM)	D (M)	$\Delta\sigma$ (MPa)
OBN	03.2	49.90	7.46	12.90	3.20	7.00	4.18	1.63	9.99	30.04	0.52	1.29
KIV	11.7	39.70	7.41	03.52	6.39	7.00	12.2	0.58	8.90	30.04	0.47	1.15
ARU	17.3	55.20	7.10	02.09	6.02	4.75	4.91	0.92	2.96	20.39	0.34	1.22
VSL	332.3	40.20	7.57	08.71	3.00	6.88	10.29	0.66	12.60	29.52	0.68	1.72
SSB	333.4	47.00	7.40	09.61	3.30	6.46	4.26	1.51	8.03	27.27	0.49	1.32
AQU	338.7	40.80	7.46	05.90	3.79	4.57	9.17	0.50	6.52	19.61	0.79	3.02
GRA1	341.7	47.80	7.49	07.90	3.00	6.00	7.88	0.76	9.17	25.75	0.65	1.88
Aver.			7.4 \pm 0.04	07.23 \pm 0.81	4.10 \pm 0.32	6.09 \pm 0.30	7.56 \pm 0.70	0.94 \pm 0.10	8.31 \pm 0.65	26.09 \pm 0.97	0.56 \pm 0.03	1.65 \pm 0.14
S.D			0.02	03.71	1.47	1.04	3.2	0.45	3.00	4.45	0.15	0.66

Table 4. Source parameters derived from the magnitude spectra of the December,5 2005 Taganyika earthquake.

Station	Azimuth	Delta In Degree	m_f (max)	E_p (10^{12} J)	T_o Sec	T_c Sec	T_s Sec	C	M_o (10^{18} Nm)	L (KM)	D (M)	$\Delta\sigma$ MPa
ISP	00.0	43.84	7.27	4.40	1.29	2.81	3.06	0.92	2.59	12.06	0.84	5.16
CSS	04.0	41.09	7.13	2.88	1.07	3.48	4.10	0.84	2.32	14.94	0.49	2.44
GNI	15.0	48.14	7.14	2.81	2.50	3.65	4.40	0.83	2.49	15.67	0.48	2.27
UCH	35.0	63.07	7.00	1.60	2.76	3.88	4.20	0.92	1.92	16.65	0.33	1.45
KZA	36.0	63.41	6.96	1.06	3.65	3.54	4.80	0.73	1.60	15.19	0.32	1.59
ULN	41.0	86.07	7.20	2.54	2.09	2.89	4.33	0.68	3.14	17.17	0.50	2.17
CHTO	68.0	72.49	6.96	1.00	1.18	3.15	5.41	0.58	1.43	13.51	0.37	2.01
CASY	156.0	80.60	7.53	17.6	2.44	5.24	4.23	1.24	8.79	22.49	0.82	2.70
TRAQ	232.0	87.63	7.20	4.20	2.88	4.16	4.99	0.83	3.26	17.85	0.48	2.00
CPUP	244.00	84.74	6.80	0.88	1.53	2.37	2.92	0.80	0.73	10.17	0.33	2.46
ASCN	256.00	43.87	6.90	0.88	2.62	2.37	4.67	0.51	0.93	10.17	0.42	3.09
PAB	328.00	55.41	6.78	0.67	1.50	4.24	6.11	0.70	1.26	18.19	0.18	0.73
MAHO	334.00	51.59	7.05	1.69	1.76	4.52	4.83	0.90	2.50	19.39	0.31	1.20
SENIN	341.00	56.06	6.95	0.96	1.31	3.12	5.33	0.59	1.38	13.39	0.36	2.00
WLF	342.00	59.35	7.03	1.55	1.20	3.69	6.10	0.61	1.95	15.84	0.37	1.72
BFO	343.00	57.51	6.88	1.21	1.68	3.53	3.09	1.14	1.33	15.15	0.27	1.33
GVD	352.00	41.20	7.21	2.48	2.84	3.53	6.90	0.48	2.83	15.15	0.58	2.85
APE	354.00	43.25	7.10	3.43	3.20	4.97	3.00	1.66	2.89	21.33	0.30	1.04
LAST	354.00	41.36	7.07	1.79	3.30	4.20	4.01	1.04	2.44	18.03	0.35	1.46
ZKR	355.00	41.25	7.15	2.86	3.41	3.60	4.50	0.79	2.52	15.45	0.50	2.39
VSU	358.00	64.52	7.10	2.95	1.33	2.24	3.43	0.65	1.40	09.61	0.71	5.49
TIRR	358.00	50.46	6.82	0.82	3.4	4.50	3.43	1.33	1.36	17.81	0.20	0.84
Aver.			7.0 \pm 0.03	2.73 \pm 0.75	2.22 \pm 0.18	3.62 \pm 0.17	4.44 \pm 0.23	0.85 \pm 0.06	2.32 \pm 0.34	15.69 \pm 0.72	0.43 \pm 0.04	2.20 \pm 0.26
S .D			0.18	3.50	0.87	0.81	1.08	0.29	1.62	03.37	0.18	1.19

Table 5. Average source parameters determined from magnitude spectra of the two earthquakes listed in Table.1 considering T_c and C.

Event No.	E_p (10^{12} J)	m_f	T_c (s)	M_o (10^{18} Nm)	L (Km)	Do (m)	$\Delta\sigma$ (MPa)	C	a_o / a_i	a_i (Km)	D_i (m)	$\Delta\sigma_i$ (MPa)	σ_{aff} (MPa)
1	07.23	7.41	6.09	08.31	26.09	0.56	1.65	0.94	4.33	3.01	1.67	20.75	4.94
2	02.37	7.06	3.62	02.32	15.69	0.43	2.20	0.85	2.28	3.54	0.72	07.66	3.67

Results And Discussion

In this study, the average maximum spectral magnitude, the source parameters and the complexity of May, 20, 1990 Sudan and the December, 05, 2005 Tanganyika Lake earthquakes which are located at the East African Rift System were derived from their magnitude spectrum. The obtained average parameters are determined from broadband seismograms recorded at various azimuths and epicentral distances in order to have stability in the estimated values. The average spectral magnitudes of 1990 Sudan earthquake show that the maximum value of the average spectral magnitude is 6.79 that corresponds to a corner period of 4 seconds while the 2005 Tanganyika lake gives a maximum spectral magnitude of 6.33 at a corner period of 4 seconds. Although the two events are similar in surface wave magnitude ($M_S=7.2$), the characteristic shape of the average spectral magnitudes for the 1990 Sudan earthquake is clearly different from that of the 2005 Tanganyika Lake one.

For both earthquakes, T_C is generally larger than T_0 . T_C also shows a smaller amount of scatter than T_0 throughout the individual stations. The average T_C value for the two events is about 1.5 times larger than the T_0 (**Tables 3 and 4**). For the 1990 Sudan earthquake, the standard deviation is about 17% for T_C and 36% for T_0 (Table. 3). The standard deviation of the corner period T_C for the 2005 Tanganyika Lake earthquake is about 20% and 40% for T_0 . The existence of such scatter in the corner period may also be attributed to the near station site characteristics which seem to have more effects especially on the complex spectrum. Since the estimation of the seismic moment and stress drop is mainly dependant on the corner period, the existence of the corner frequency error factor will propagate through the obtained values. The relatively higher stability of T_C results from the integration of the spectrum as pointed out by **Boatwright, 1980, Snoke et al., 1983, Andrews, 1986 and Kaiser et al., 1996**. Due to stability of the T_C , its values were preferred for estimating the seismic moment, stress drop and fault length for both earthquakes. The average corner period T_C , for 1990 Sudan earthquake (6.09 seconds) is larger than that of the 2005 Tanganyika lake one with T_C equal to 3.62 seconds (Tables 3&4). These values of T_C give faults having lengths of 26.09 and 15.69 km respectively. The average seismic moment of the 1990 Sudan earthquake (8.31×10^{18} Nm) is about 3.5 times larger than the 2005 Tanganyika Lake earthquake of average seismic moment (2.32×10^{18} Nm). In comparison, the estimated stress drops are found to be 1.65 MPa for the 1990 Sudan earthquake and 2.20 MPa for the 2005 Tanganyika Lake. These quantities, which are calculated for each earthquake, are listed in Tables 3 and 4. The values of M_0 , estimated from the magnitude spectrum

for both earthquakes, differ from those reported one by CMT. For the 1990 Sudan earthquake, the average seismic moment (8.31×10^{18} Nm) is about ten times smaller than the moment estimated from CMT of Harvard (8.20×10^{19} Nm) and six times smaller than the one estimated by **Gaulon et al.,1992** from the waveform modeling of the teleseismic broadband P and SH (5.30×10^{19} Nm). The estimated seismic moment for the 2005 Tanganyika lake earthquake (2.32×10^{18} Nm) is eight times smaller than that estimated from CMT of Harvard (1.81×10^{19} Nm). The relatively smaller values of moments obtained in this study compared to CMT is probably due to the fact that the present solutions are based on the P-wave only.

For the 1990 Sudan earthquake, the magnitude spectra at GRA1 station which is nearly located in the direction of the NW trending fault plane shows a distortion of the spectrum of the intermediate periods (Fig. 4) compared to OBN station which is located at an angle of about 20° clockwise from the GRA1 station. These changes in magnitude spectra characteristics may be due to directivity. Unfortunately, the azimuth coverage of the stations is insufficient for monitoring the effect of the directivity on the magnitude spectra. The magnitude spectra of the 2005 Tanganyika lake earthquake for waveform records at three different azimuths (Fig. 5) show some evidences of the frequency dependent directivity. CASY station shows relatively larger amplitude of the spectrum at intermediate periods compared to the two other stations. It also reflects a sharp decay of the spectrum from intermediate to lower periods relative to PFO station which is located opposite to CASY one. The radiated seismic energy is also focused towards the azimuth of this station, whereas the seismic energy at this station is the maximum estimated value compared to the other stations which are located away from the rupture direction. This means that CASY station is located in the direction of the main rupture propagation. The predicted direction of the rupture is in good agreement with the direction of the NW trending fault plane. However, ULN station which is located perpendicular to the main rupture shows the spectral decay as w^2 model with a nearly flat spectral magnitude level. The changes of the spectral shapes at different stations located in various azimuths with respect to the direction of the rupture propagation may be related to the frequency dependent directivity according to the self similar k^2 distribution model of the coseismic slip deduced by **Bernard and Herrero, 1994**. The predicted direction of the rupture is in good agreement with the direction of the NW trending fault plane.

The two investigated earthquakes in this study have intermediate complexity C-values (Table. 5). The value of the relative asperity size a_0/a_1 , which reflects the

non-uniform distribution of various physical properties on the fault plane for the 1990 Sudan earthquake is 1.5 times larger than the 2005 Tanganyika Lake one. The localized stress drop $\Delta\sigma_i$ is larger by a factor of 3 for the 1990 Sudan earthquake compared to that of the 2005 Tanganyika Lake although, the $\Delta\sigma$ of the second event is 1.3 times larger than the value of the first event. The local stress drop $\Delta\sigma_i$ for the first event is higher than the average stress drop $\Delta\sigma$ over the fault by a factor of 12 whereas the estimated localized stress drop $\Delta\sigma_i$ for the second event is larger than the average stress drop $\Delta\sigma$ by a relatively smaller factor (3.5). These results are in a good agreement with the estimated values of complexity C which indicate that The 1990 Sudan earthquake is more complex compared to that of the 2005 Tanganyika Lake. For complex sources, the average static stress drop $\Delta\sigma$ is insufficient to describe the regional stress field. Therefore, the ambient faulting stress σ_{aff} which determines the level of stress accumulation within a seismogenic province (McGarr, 1981) and represents the regional shear stress which can cause displacement along the fault (Kaiser et al., 1996), is determined for both earthquakes. σ_{aff} , for the 1990 Sudan earthquake is about 1.3 times larger than the value for 2005 Tanganyika Lake. The quantities of stress drop, ambient stress drop and localized stress drop are given in Table. 5. Variations in the stress drop and ambient stress drop for the two investigated earthquakes is mainly related to the different tectonic environments where these earthquakes took place. The CMT solutions by Harvard for both earthquakes support this result. However, the focal mechanism solution of the 1990 Sudan earthquake corresponds to strike slip faulting, while the 2005 Lake Tanganyika is a pure normal faulting mechanism.

References

1. AKI, K., 1967. Scaling law of seismic spectrum. *J.Geophys.Res.*72,1217-1231.
2. Ambraseys, N.N. and Adams, R.D.,1986. Seismicity of the Sudan. *Bulletin of the Seismological Society of America*, 76, 483 – 493
3. ANDREWS, D.J., 1986. Objective determination of source parameters and similarity of earthquakes of different size. In: S. Das, J. Boatwright, and C.H.Scholz (Eds), *Earthquake source mechanism. Geophysical Monograph 37, Maurice Ewing, 6, Geophys. Un., Wash. D. C.,259-267.*
4. BARAZANGI, M., 1983. A summary of seismotectonics of the Arab region. In : *Assessment and mitigation of earthquake risk in the Arab region*, Cidlinsky, K. and Rouhban, B.M.(editors)., 43-77.

5. BERNARD, P. AND HERRERO, A. 1994. Slip heterogeneity, body-wave spectra, and directivity of earthquake ruptures. *Annali .Di Geofis.*, XXXVII,6,1679-1690.
6. BOATWRIGHT, J., 1980. A spectral theory for circular seismic sources; simple estimates of source dimension, dynamic stress drop, and radiate seismic energy. *Bull. Seism.Soc. Am.*, 70, 1-27.
7. BRUNE, J.N., 1968. Seismic moment, seismicity and the rate of slip along major fault zones. *J.Geophys.Res.*73, 777-784.
8. BRUNE, J.N., 1970. Tectonic stress and the spectra of seismic shear waves from earthquakes. *J.Geophys.Res.*, 75,4997-5009.
9. BRUNE, J.N., 1971. Correction, *J.Geophysics.Res.*,76, 5002.
10. CHOWDHURY, D. K. and DUDA, S.J., 1986. Broadband seismograms, band –pass seismograms and spectral magnitudes for a selection of 1979, 1980 and 1981 earthquakes. *Institute fur Geophysik, Universitat Hamburg*, 180 pp.
11. DUDA, S.J., AND KAISER, D.,1989.Spectral magnitudes, magnitude spectra, and earthquake quatication; The stability issue of corner period and the maximum magnitude for a given earthquake. *Tectonophysics*, 166, 205-219.
12. DUDA, S.J., AND T.B. YANOVSKAYA, 1994. Calibration functions for P-wave spectral magnitudes. *Acta Geophysica Polonica*, XLII, No.4, 293-306.
13. GAULON, R., CHOROWICZ, J., VIDAL, G.,ROMANOWICZ, B. AND ROULT, G., 1992. Regional geodynamic implications of the May-July 1990 earthquake sequence in southern Sudan. *Tectonophysics*, 209, 87-103.
14. GIRDLER , R.W., AND MCCONELL, D.A., 1994. The 1990 to 1991 Sudan earthquake sequence and the extent of the East African Rift System. *Science*, 264, 67-69.
15. KAISER,D., 1989. Seismizitat des Erdkorpers: Magitudenspektren und andere Erdbeben–Her-dparameter aufgrund von Breitband-Seismogrammen.Ph.D.-Thesis,Universitat, Hamburg.
16. KAISER, D., AND DUDA, S.J., 1986. Broadband seismograms, band-pass seismograms, and spectral magnitudes for a selection of 1978 earthquakes. *Institute fur Geophysik, Universitat Hamburg*, 61pp.
17. KAISER, D., AND DUDA, S.J., 1988. Magnitude spectra and other source parameters for some major 1985 and 1986 earthquakes. In:O.Kulhanek(Ed.), *Seismic source physics and earthquake prediction research*. *Tectonophysics*,152,203-218.

18. KAISER, D., DUDA, J.S. AND CHOWDHURY, D. K., 1996. P-wave magnitude spectra, stress drops, rupture complexities and other source parameters from broadband seismograms of three 1987 Southern California earthquakes. *Geofizka*, 13,1-29.
19. KEILIS-BOROK, V., 1959. On the estimation of the displacement in an earthquake source and of source dimension. *Annali .Di Geofis.*12,205-214.
20. MCGARR, A., 1981. Analysis of Peak ground motion in terms of model of inhomogeneous faulting. *J.Geophys.Res.*, 86, B5,3901-3912.
21. OXBURG, E.R., AND TURCOTTE, D.L., 1974. Membrane tectonics and the East African Rift . *Earth. Planet.Sci.Lett.*,22, 133-140.
22. ROLET, J., MONDEGUER, A.,BOUROULLEC, J., BANDORA, T., COUSSEMENT, J. AND TIERCELIN, J., 1991.Structure and different kinematic development faults along the Lake Tanganyika Rift Valley, East African Rift System. *Bulletin Centres Rech. Explor.-Prod Elf-Aquitaine*, 15,327-342.
23. ROSLOV, Y., 1994. Program for amplitude spectrum treatment and analysis. *Acta Geophysica Plonica*, XL 11,4,315-319.
24. SARKER, D., AND DUDA, S.J., 1985. Spectral P-wave magnitudes, Aki's omega-square model and source parameters of earthquakes. *Tectonophysics*, 188, 175-193.
25. SNOKE, J.A., LINDE, A. T., AND SACKS, I.S., 1983. Apperent stress: an estimate of the stress drop. *Bull.Seism.Soc.Am.*, 73,339-348.
26. SNOKE, J. A., 1987. Stable determination of Brune stress drops. *Bull. Seism. Soc. Am.*, 79, 493-499.