

,

.

%

%

%

%

.

%

z_score

:

)

%

.

,

.

)

.(:

(Levels and trends in child mortality; 2010: 54)

.(:)

.(www.fao.org/post 2015)

:)

(.()

/

.(:

)CN.6/20413

)

(:

...
- :)

:.
)
(

(

()

(- :)

- () -

-

-

-

-:

)

)

(

:

:

-

-

-

-

-

:

-

-

...

..

:

:

-

:

) % ,

.(- :

:

" "

Z-

:

-

score

:

(

)

:

%

maternal-health

:

-

:)

:

(World Health Organization

- () -

)

:

.

Z-score

()

:

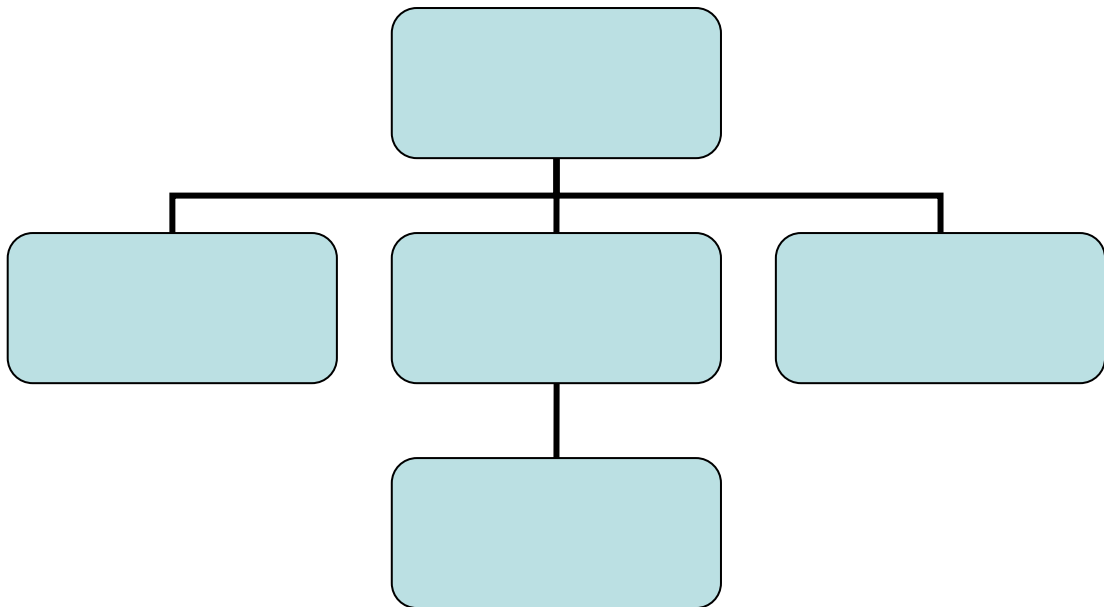
:

)

()

(

()



...

..

()
.()

:

(
()

.()

:

()

()

(

()

()

Z-score

:

-)

.(-

:

:

:

"

) "

(:

) ():

:

(

=

)

(

) (

(

:

()

.()

):

) (

) (

) (

) (

:

.(

- () -

:

-

:

:

:

-

:

Z-score

(- :)

:

:

[]

- - -)

(- -

:

[]

- - - -

:

[]

:

:

:

:

-

.()

()

:

-

- () -

:

)

.(

:

:

:

()

%

:

()

-

%

%

%

%

| |
|-------|
| |
| (-) |
| (-) |
| (-) |

| |
|-------|
| |
| % |
| (-) |
| (-) |
| () |
| % |

%

()

%

()

(%)

()

(%)

(%)

| |
|-------|
| |
| |
| (-) |
| (-) |
| (-) |
| |

()

(%) ()

.(%) ()

| |
|--|
| |
| |
| |
| |
| |
| |

()

(%)

(% ,)

(%)

(%)

(%)

()

(%)

(%)

(%)

(%)

(%)

(%)

(%)

(%)

(%)

(%)

(%)

(%)

(%)

(%)

.(%)

- () -

:

.

:

.

.

"

)

(

"

()

()

,

,

,

,

,

,

.

.

.

:

| |
|-------|
| |
| * _ / |
| / |
| / |
| - * / |

*

:

()

1999

.()

()

Levels and trends in child mortality; Report 2010 - Estimates developed by the UN Inter-agency Group for Child Mortality Estimation. New York, United Nations Children's Fund, 2010

World Health Organization, 2010 maternal mortality. Geneva; Fact Sheet No. 348.

www.albankaldawli.org/mdg/maternal_health. Visited at 10pm 8/7/2015

www.fao.org/post-2015-mdg/mdg/goal-5/ar visited at 10pm 8/7/2015

SUMMARY

Some Social and Economic Variables Effecting of Maternal-Health of Rural Woman in Assiut Governorate

Mervat Sedki Abd EL Wahab, Eman Awad Serag

The study aimed to identifying the level of maternal-health of rural woman in Assiut Governorate, as well as testing significance of relationship between social and economic variables and the total degree of maternal-health, identify the problems of woman related to maternal health for rural women.

The research was conducted in Assiut according to the standard maternal mortality where ranked first rate of maternal mortality, and has been selected district of Ghanaian (el amere) and (nazalet el kadem)Villages

Data were collected from sample of 100 rural women using personal interview a questionnaire, and the following statistics methods were used in data analysis simple correlation coefficient of Pearson, and Z (score), frequencies and percentages

The most important results of the analysis as follows:

1. 56% of respondents wear found in the category of middle Level of maternal-health of rural woman
2. There was positive significance relationship between the total degree of maternal-health of rural woman and the social economic variables as the following: [current age, and the number of children in the family and among the total score of the maternal health of rural woman, and the size of agricultural holdings, ownership of farm animals, and annual household expenditure.
3. 80% of the Respondents suffer from insufficient number of female doctors in the health unit, and there isn't enough money to execute the birth process in a safe place, by 51%of the respondent, and 47% of respondent suffer from their husband rejection to follow up with their pregnancy, where there is 25% of the respondent said that there isn't enough money for the nutrition care of the pregnant mother.