

# Invasion and egress cascade in intracellular protozoa: Part 1

Editorial Sherif M Abaza

Medical Parasitology Department, Faculty of Medicine, Suez Canal University, Ismailia, Egypt

A wide spectrum of pathogenic intracellular bacteria, viruses and protozoa adapt several strategies to enter into and exit from their host with optimum rates of survival, replication, and progression through life cycle stages as well as transmission. Egress is defined as the escape process from the host cell after replication and is followed by daughter cells exit. Therefore, egress is of fundamental importance for transmission processes, pathogen spread, and inflammation. Accordingly, molecules involved in egress mechanism(s) act as key factors in infection, pathogenesis, and transmission. They are considered as indirect virulence factors and potential drug targets. In fact, the egress cascade is a complex strategy involving several aspects, and its molecular analysis is difficult to investigate *in vitro* due to the contribution of several molecules in invasion or egress. It is impossible to independently investigate factors involved in egress from vacuolar and host cell membranes at the same time. The present editorial aims to simplify our knowledge regarding this critical issue with emphasis on its molecular tools and mechanisms.

**Keywords:** apical secretory organelles, drug targets, egress, invasion, *Plasmodium*, protein kinases, *Toxoplasma*.

**Received:** 12 March, 2021, **Accepted:** 16 April, 2021.

**Corresponding Author:** Sherif M Abaza, **Tel.:** +20 1005243428, **E-mail:** smabaza@hotmail.com

**Print ISSN:** 1687-7942, **Online ISSN:** 2090-2646, **Vol. 14, No. 1, April, 2021.**

One of the major characters of intracellular pathogens is the considerable difference in host cell preference. Accordingly, they depend on specific requirements and establish suitable mechanisms for cell entry, modes of replication, and cell exit. The main obstacle in invading a specific target host cell is crossing the cellular plasma membrane and cytoskeleton. Several strategies are described that differ according to parasite' capabilities and nature of the invaded host cells. In intracellular apicomplexans, *Plasmodium* spp. and *T. gondii* utilize the characteristic secretory apical organelles that release molecules through a moving junction to actively drive the parasite into host cells. Molecules released from micronemes are the key factors for strong adhesion of apicomplexans to the host cell surface, while rhoptry proteins are responsible for formation of a tight moving junction. The formed junction moves through the host cell plasma membrane to alter its actin cytoskeleton. It is worth mentioning that sporozoites of *Cryptosporidium* spp. do not actively invade host cells, instead the merozoites prompt host epithelial cells to surround them with a host cell-derived membrane at the tip of the epithelial cells under the brush border.

In intracellular hemoflagellates, *Leishmania* spp. not only utilize flagellar activity to invade host cells, but also once inside the host cell, the transformed amastigotes recruit phagocytosis of host cytosol to resist macrophages' phagocytic degradation. Host macrophage receptors mediate parasite adherence and subsequent phagocytosis signaling. On the other hand, *T. cruzi* recruit host cell lysosomes to the attachment site. Lysosomes fusion to host cell plasma membrane allows parasite internalization. Utilizing this strategy, *T. cruzi* ravages the endocytic pathway(s) used by the host cell to repair its plasma membrane. *Leishmania*

promastigotes showed their ability to utilize a similar strategy in host cell invasion *in vitro*. Besides, several surface lipid-anchored glycoproteins are established as virulence factors since all pathogenic trypanosomatids dramatically change composition of their glycocalyx membrane during stage transformation for host cell invasion. Sporulated intracellular protozoa (*Microsporidium* spp.) induce endocytosis utilizing their specialized polar tube proteins. Electron microscopy studies show that *Microsporidium* polar tube is surrounded by host cell plasma membrane.

Meanwhile, the process of cell entry, replication, and egress occurs in sequence, *i.e.*, no egress without pathogen replication. The main obstacle that faces intracellular replication is the surrounding acidic environment produced as a result of fusion with endolysosomes. Therefore, all intracellular protozoa (except for *T. cruzi*) replicate in their parasitophorous vacuole (PV). While PV membrane is host-derived in *Plasmodium* spp., and *T. gondii*, other intracellular protozoa possess a parasite-derived PV membrane. Accordingly, egress in *Plasmodium* spp., and *T. gondii* requires breakdown of two barriers, namely PV and host cell membranes. To preserve host cell integrity, required for parasite replication, *T. cruzi* amastigotes breakdown the PV membrane to replicate in the host cytosol. To initiate egress, they have to breakdown host cell membrane. It is important to know that control of parasite egress by the host adaptive immune response leads to chronic infection.

In addition to membrane(s) lysis, active egress cascade includes disintegration of host cell cytoskeleton. Role of several molecules such as proteases, phospholipases, and pore-forming proteins are established in various intracellular protozoa. Such

key molecules require activation factors such as calcium (Ca) concentration and/or its signaling pathway. Besides, egress cascade may utilize molecular mimicry to steal host cellular functions, e.g., host cytoskeleton dynamics. It is worth mentioning that egress cascade in few intracellular pathogens e.g., *Cryptosporidium* spp., does not result in host cell damage, most probably due to its presence in the brush border of the intestinal epithelium. Since membrane lysis and cellular damage triggers host inflammatory response with recruitment of immune cells, egress cascade in apicomplexans involves other strategies such as immunomodulation, autophagy and even apoptosis for the sake of the parasite survival.

**Initial stimulus:** Except for *T. gondii* (discussed later), stimuli to start host cell egress remains obscure for most intracellular pathogens. Mechanism utilized by intracellular pathogens to sense the environmental changes such as increase Ca concentration, or decrease host cell cytosolic potassium, are poorly understood. Although this is not essentially required for the process of egress cascade itself, sensing environmental changes is proposed as initial stimuli for egress in the majority of intracellular protozoa. This was observed microscopically (Azab ME personal communication) when bradyzoites in a tissue cyst became agitated by trypsinization of the cyst wall, and actively rolled over themselves, until one of them bore through the cyst wall by its apical complex, releasing the encysted bradyzoites.

### Tools

**1. Secretory organelles:** Evolutionary studies showed that Superphylum Alveolata constitutes a major clade within Eukarya. Alveolates are a group of protists with cortical alveoli (sacs or cavities or vesicles), that are packed into a continuous layer beneath protists' membrane. Alveolata includes several free living and parasitic protozoa, among them ciliates, and apicomplexans. It was hypothesized that apicomplexan secretory organelles are evolutionary cavities adapted for several requirements of variable parasite lifestyles, *i.e.* nutrients acquisition, gliding motility, host cell exit, cytoadherence, and entry into a newly formed PV within another host cell. Secretory organelles include apical micronemes and rhoptries (Rhs), required for host cell invasion, as well as non-apical dense granules and osmiophilic bodies (OBs) required for the complete disruption of PV membrane.

• **Micronemes:** They are triggered by intracellular Ca-signaling pathway after host cell attachment. In *Plasmodium* spp., and *T. gondii*, micronemes release proteins on the parasite surface membrane. Among them are actinomyosin for motility, catalytic proteases, and perforin-like proteins (PLPs) for degradation of host cell membrane (discussed later). Micronemes number and released proteins differ according to apicomplexan life cycle stages. *Plasmodium* erythrocytic merozoites contain fewer micronemes than those of sporozoites, while *Toxoplasma* tachyzoites and *Cryptosporidium* sporozoites contain numerous

micronemes. *Toxoplasma* micronemes are involved in host cell invasion through regulation of the contact between host receptors and parasite actin for gliding motility utilized in invasion strategy. Additional related secretory organelles such as exonemes and mononemes are identified in *Plasmodium* life cycle stages involved during invasion and egress cascade.

• **Rhoptries:** The apical membrane antigen (AMA-1), released from micronemes was hypothesized to trigger release of Rh proteins. These pear or club-shaped organelles release their proteins after micronemes release theirs. There are two sets of proteins named according to localization of their production from neck or bulb regions. Neck proteins are responsible for stabilization of the tight moving junction between the parasite and the host cell, followed by bulb proteins. The latter carry out a broad spectrum of functions that include cell adhesion, PV formation in newly invaded host cells and immune evasion.

• **Dense granules:** They are organelles dispensed as microspheres, surrounded by a unique membrane. Immediately and constitutively after PV formation, they release dense granule proteins (GRAs) without a known molecular trigger. The GRAs are essentially responsible for formation of an intimate interaction with the host derived PV membrane inducing organization and proteins trafficking.

• **Osmiophilic bodies (OBs):** They are electron-dense organelles derived from Golgi vesicles in *Plasmodium* gametocytes. They first appear in stage IV female gametocytes, and occasionally in male gametocytes and increase in frequency and density with maturity to stage V gametocytes. They are involved in degradation of both PV membrane and RBC membrane skeleton, contributing to gamete egress in mosquitoes prior to gametogenesis. The PfG377 protein is the main component for OBs biogenesis. The OBs release two proteins into the PV that play a crucial role in gametocytes egress, and sporozoite traversal (GEST). Additionally, they constitute the protein of early gametocyte stage 3 (PEG3), also known as male development 1 (MDV1). Dynamics of OBs in *P. falciparum* activated gametocytes is investigated using antibodies raised against G377. It was demonstrated that OBs migrate to localize just beneath gametocyte' plasma membrane, and fuse together forming one vesicle. Prior to egress, the fused vesicle releases G377 into PV by exocytosis, *i.e.*, membrane fusion of both PV and the fused vesicle. This OBs migration and fusion allows translocation of adhesins of thrombospondin-related anonymous protein (TRAP) from micronemes to sporozoites' surface. Adhesins are essential for mature sporozoites migration from the mosquito hemocoel into the salivary gland lumen as well as in the skin following the mosquito bite and liver invasion. Surface-associated TRAP family proteins have an

essential role in parasite motility and cell invasion because they provide the link between intracellular actomyosin motor and its extracellular substrate.

**2. Pore-forming proteins:** All intracellular apicomplexans PLPs, released from micronemes, are implicated in host cell traversal during invasion and egress. These proteins are members of the membrane attack complex/perforin (MACPF), a diverse family of pore forming proteins possessing a domain that binds with membrane phospholipids receptors, the first step in pore formation. In human, members of MACPF superfamily play essential roles in immune response involving cytolysis of invading pathogens and infected cells. *Plasmodium* spp. possess five PLPs, whereas *T. gondii* expresses two PLPs. Among *Plasmodium* PLPs, only two are involved in egress of erythrocytic merozoites (PLP1) from host RBCs, and gametocytes (PLP2) in mosquito midgut. The remaining PLPs (3-5) are incriminated in ookinetes and sporozoites cell traversal through midgut epithelium avoiding mosquito immune defense. Another two molecules are uniquely expressed in *Plasmodium* spp. for cell traversal through host cells and mosquito's midgut. They are known as sporozoite protein essential for cell traversal (SPECT1) and ookinetes and sporozoites cell traversal (CelTOS), respectively (Figure 1).

**3. Protein kinases:** These are essentially incriminated in invasion and egress cascade. They mediate the transfer of phosphate groups from adenosine triphosphate (ATP) to specific residues on the target proteins, changing its stability and activity. Both *Plasmodium* spp. and *T. gondii* contain a family of Ca-dependent protein kinases (CDPKs) that have critical roles in the regulation of several processes including gliding motility, host cell attachment, invasion, and egress. It is established that *T. gondii* CDPK1 is crucial for protein secretion from the micronemes. Due to their peripheral localization, *Tg*CDPK3 and *Pf*CDPK5, molecules in Ca-dependent signaling pathway, are stimulated with decreased cellular potassium concentration because of cell permeabilization or damage. Additionally, proteomic analysis of *P. falciparum* revealed 21 members of unique protein kinases (FIKK family). Among them, only three FIKKs (4.2, 7.1, and 12) are exported to the newly infected RBC to alter its membrane rigidity. Due to its restricted localization in Rh, *Pf*FIKK3, is not exported into RBCs; its role in the release of Rh bulb proteins during RBC invasion is hypothesized.

#### **Invasion and egress in intracellular protozoa *Plasmodium* spp.**

Molecular studies in *Plasmodium* spp. confirmed that RBCs invasion and egress are tightly regulated by a *Plasmodium* protease arsenal. This includes subtilisin-like serine proteases (SUBs 1 and 2), serine repeats antigens (SERAs 5 and 6), as well as falcipians (Fals 1 and 2), and dipeptidyl aminopeptidase 3 (DPAP3) as

cysteine proteases, and plasmepsins (Plas IX and X) as aspartyl proteases.

**Host cell invasion:** SUB1 contributes with DPAP3 in processing of merozoite surface protein 1 (MSP1) and the specific rhomboid protease 1 (ROM1), whereas SUB2 is required for processing of proteases (Fal1 and PlaIX). Mature SUB2 regulates MSPs release involved in shedding of merozoites protein coat, a crucial step for attachment to RBC surface during the invasion process. It is worth mentioning that MSPs are synthesized in early schizogony and MSP1 is the first molecule that attaches to a new RBC surface, targeting spectrin, a complex on the internal surface of RBC cell membrane. It was observed that MSP1 serves as a marker for the formation of merozoites food vacuoles. In addition, ROM1 is involved in PV formation, and cleavage of intramembrane merozoite adhesins. Its crucial role in *de novo* invasion is hypothesized due to its apical localization in egressed merozoites. Besides, *P. falciparum* unique protein kinase (*Pf*FIKK3) triggers Rh bulb proteins release. While Fal1 utilizes its proteolytic activity in degradation of RBC plasma membrane, PlaIX that is localized in Rh, is expressed for continuous maturation of Rh proteins in invasive merozoites (Figure 1, and table 1).

**Hepatic merozoites egress:** Liver-specific protein 1 (LISP1) contributes with proteases in merozoites egress from hepatocytes. It is expressed by hepatic merozoites to localize at PV membrane. *In vitro* studies showed that merozoites deficient in LISP1 developed well into hepatic merozoites with normal RBCs infectivity. However, *in vivo* studies showed that hepatic merozoites deficient in LISP1 were not able to rupture PV membrane, *i.e.*, they are trapped inside hepatocytes, with low levels of parasitemia in infected mice. Besides, merozoites egress utilizes a budding mechanism to release intra vesicular merosomes, from hepatic cytosol into hepatic sinusoids. Merosomes membranes are derived from the infected hepatocyte to protect egressed merozoites. Finally, merozoites are released in the pulmonary microvasculature (Figure 1, and table 1).

**Erythrocytic merozoites egress:** As previously mentioned, merozoite egress through PV membrane is firmly controlled by proteases. Other effectors are reported for rapid lysis succession of RBCs plasma membrane, and cleavage of RBCs cytoskeletal elements such as phospholipases, PLPs and osmotic stress proteins. Protein kinases unique in *P. falciparum* (*Pf*FIKKs 4.2, 7.1 and 12) alter RBC membrane rigidity. *Plasmodium* SUB1 possesses unique evolutionary structural feature in utilizing specific Ca-dependent regulation of its activation to initiate egress. After a series of proteolytic processing, mature SUB1 is stored in merozoites exonemes. Due to increased intracellular Ca concentration, exonemes release SUB1 in PV to contribute with DPAP3 in processing SERAs 5 and 6.

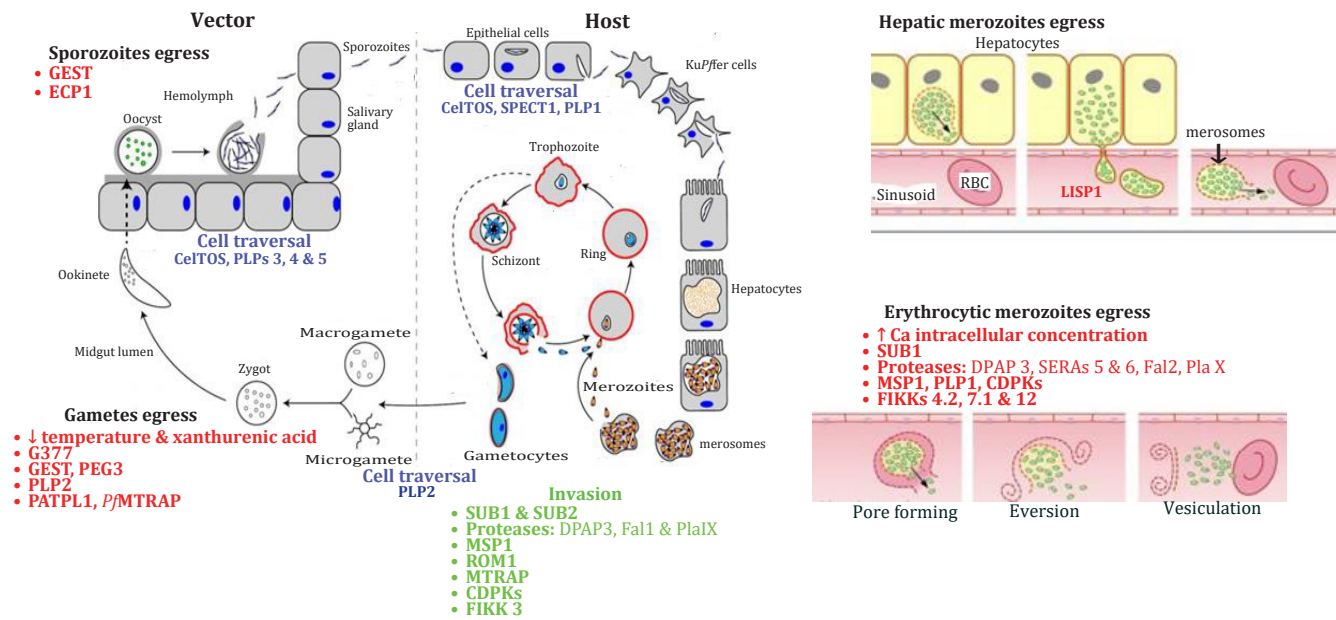


The latter proteases play a crucial role in the proper rupture of PV membrane and destabilization of RBC cytoskeleton. While Fal2 is involved in degradation of erythrocyte-membrane skeletal proteins including ankyrin, PlaX is expressed in mature schizonts to control SUB1 maturation. It is observed that PlaX has a crucial role for the final SUB1 processing to the degree that it is described as the most upstream protease in the egress. Merozoites egress is a rapid process (~400 milli-sec) that takes place in three main steps: 1) a single ~1 μm pore that allows osmotically-driven release of 1–2 merozoites; 2) an outward curling or wrinkling of RBC membrane from the pore center, followed by 3) a rapid eversion or buckling of the entire membrane to eject all merozoites, *i.e.*, vesiculation. Prior modification and/or degradation of RBC cytoskeleton facilitates the last two steps (Figure 1, and table 1).

**Gametocytes egress:** It is demonstrated in four steps: 1) swelling of host RBC; 2) PVM rupture and immediate vesiculation; 3) extrusion of these vesicles through a single pore in RBC membrane; and 4) RBC membrane is subsequently vesiculated releasing egressed gametes inside mosquito' midgut. It is worth mentioning that timing is critical (30 min) for female gametes fertilization with the short-lived

male gametes. Egress is initiated by three stimuli: two external involving decreased temperature and excretion of xanthurenic acid from midgut, and one internal in the form of proteases activity. Predominantly in female gametocytes, OBs represent the secretory organelles with similar role as exonemes in erythrocytic stages. It is observed that G377 is exclusively expressed in females; while GEST, PEG3 and PPLP2 are expressed in both sexes. Proteomic studies identified four patatin-like phospholipases (PATPLs) with lipolytic activity in *P. falciparum* gametocytes. It is observed that *Pf*PATPL1 plays an essential role in PLP2 translocation at gametes periphery (micronemes) to promote egress in mosquito' midgut. In addition, *Plasmodium* spp. express a TRAP family protein termed merozoite-TRAP (MTRAP) that was thought to be essentially involved in RBCs invasion by merozoites. Nowadays, *Pf*MTRAP identified in TRAP-containing secretory vesicles, proved to have an essential role in gamete egress from RBCs in mosquito' midgut. It contributes to disruption of PV and RBC membranes (Figure 1 and table 1).

**Sporozoites egress in mosquitoes:** Besides its role in gametocytes egress, GEST contributes with a SERA homologue, known as egress cysteine protease 1 (ECP1), in successful exit of sporozoites from oocyst. Previously,



**Fig. 1.** Molecules for invasion (green), egress (red) and cell traversal (blue) of different stages in *Plasmodium* spp. life cycle. Modified from figures cited by Friedrich *et al.*<sup>[3]</sup> and Guerra and Carruthers<sup>[5]</sup>.

In **host cell invasion**, SUB1 contributes with DPAP3 in processing MSP1 (protein coat shedding) and ROM1 (ahesins cleavage). SUB2 processes Fal1 (RBC plasma membrane disruption) and PlaIX (maturation of rhoptry proteins). MTRAP promotes merozoites motility, FIKKs regulate release of rhoptry proteins, and alter RBC membrane rigidity. CDPKs regulate protein phosphorylation required for several processes. **Hepatic merozoites egress** involves PV membrane lysis, release of merozoites in merosomes (LISP1), and merosome lysis. **Erythrocytic merozoites egress** includes PV membrane lysis, and breakdown of RBCs cytoskeletal elements by pore forming proteins (PLP1), MSP1 and proteases. RBCs undergo sequent events ending with merozoites vesiculation. For **gametes egress**, G377 is involved in biogenesis of secretory organelles, osmiophilic bodies release GEST and PEG3, *Pf*PATPL1 translocates PLPs, and *Pf*MTRAP disrupts PV and RBC membranes. GEST contributes with ECP1 for **sporozoites egress**.

**Ca:** Calcium; **CelTOS:** Ookinetes and sporozoites cell traversal; **DPAP3:** Dipeptidyl aminopeptidase 3; **ECP1:** Egress cysteine protease 1; **Fal:** Falcipain; **G377:** Gametocytes protein; **GEST:** Gamete egress and sporozoite traversal protein; **LISP:** Liver specific protein; **MSP:** Merozoite surface protein; **MTRAP:** Merozoite thrombospondin-related anonymous protein; **PARPL1:** Patatin-like phospholipase; **PEG3:** Protein of early gametocyte 3, **Pla:** Plasmepsin; **SERA:** Serine repeat antigen; **SPECT:** Sporozoite protein essential for cell traversal; **SUB:** Subtilisin-like serine protease.

it was thought that sporozoites exit oocysts through passive rupture due to parasite growth. However, it was proved that ECP1 is expressed in mature oocysts, and subsequently downregulated in the mosquito's salivary gland sporozoites before transmission to the mammalian host. Knocking out the *Plasmodium's* encoding gene blocks its life cycle at the oocyst stage (Figure 1 and table 1).

## CONCLUDING REMARKS

1. Intracellular protozoa utilize different strategies for host cell invasion; tight moving junction (*Plasmodium* spp. and *T. gondii*), recruitment of either host cell phagocytosis (*Leishmania* spp.) or host cell lysosomes (*T. cruzi*), and induction of endocytosis

for spores internalization (*Microsporidium* spp.). *Cryptosporidium* spp. do not actively invade host cells.

2. In *Plasmodium* spp. and *T. gondii*, replication occurs within PV followed by breakdown of both membranes (PV and host cell). In pathogenic kinetoplastids (except for *T. cruzi*), *Cryptosporidium* spp., and microsporidia, replication occurs within the host cell, followed by host cell membrane lysis. In *T. cruzi*, the first step is breakdown of its vacuole membrane, then replication inside host cytosole, followed by host cell membrane.

3. In *Plasmodium* spp. and *T. gondii*, a link exists between egress and subsequent *de novo* invasion that involves possession of apical secretory organelles (micronemes, rhoptries, and dense granules) as storage for the involved molecules, and Ca-signaling as initial stimuli. Besides, PLPs released from

**Table 1.** *Plasmodium* molecules involved in invasion and egress cascade.

Molecule	Localization	Function	
		Invasion	Egress
Ca	Intracellular	---	Initiator
CDPK	---	Regulates protein phosphorylation required for host cell invasion and egress	
DPAP3	Apical secretory organelles	---	Processing of SERAs 5 and 6
ECP1	Mature oocyst	---	Sporozoites egress from oocyst
Fal1	PV	Proteolytic degradation	---
Fal2	PV	---	Degradation of RBC membrane skeletal proteins
FIKK3	Rhs	Release of Rh bulb proteins	---
FIKK4.2, 7.1 & 12	Exported to RBCs cytosol	---	Alter RBC membrane rigidity
G377	Female gametocyte Obs	---	Biogenesis of secretory organelles
GEST	Female gametocyte Obs	---	Gametocytes and sporozoites egress
LISP1	Hepatocytes	---	Hepatic merozoites egress
MSPs	Merozoite surface membrane	Shedding merozoites protein coat	PV membrane disruption
MTRAP	Micronemes	Merozoite motility	Disruption of PV and RBC membranes in gametes egress
PATPL1	---	---	PLP2 translocation at gametes periphery
PEG3	Male gametocyte Obs	---	Gametocytes egress
Pla IX	Rhs	Maturation of Rh proteins	---
Pla X	Rhs & exonemes	---	Control maturation of SUB1
PLP1	Micronemes	MACPf pore forming proteins	---
PLP2	Micronemes	---	Gametocytes egress
ROM1	Mononemes	Formation of PV	---
SERAs 5 & 6	PV	---	PV membrane rupture, destabilization of RBC cytoskeleton
SUB 1	Exonemes	Processing of MSP1 and ROM1	Processing of proteins involved in egress
SUB 2	Micronemes	Processing of proteases and regulation of MSPs release	---

**CDPK:** Ca-dependent protein kinase; **DPAP:** Dipeptidyl aminopeptidase; **ECP1:** Egress cysteine protease 1; **Fal:** Falcipian; **FIKK:** Atypical protein kinase; **G377:** Gametocytes protein; **GEST:** Gamete egress and sporozoite traversal protein; **LISP:** Liver specific protein; **MACPf:** Membrane attack complex/perforin; **MSP:** Merozoite surface protein; **MTRAP:** Merozoite thrombospondin-related anonymous protein; **OBS:** Osmiophilic bodies; **PARPL:** Patatin-like phospholipase; **PEG3:** Protein of early gametocyte 3; **Pla:** Plasmepsin; **PLP:** Perforin like protein; **PV:** Parasitophorous vacuole; **RBC:** Red blood corpuscle; **Rh:** Rhoptry; **ROM:** Specific rhomboid protease; **SERA:** Serine repeat antigen; **SUB:** Subtilisin-like serine protease.

micronemes are the main members for MACPF assigned as pore-forming proteins.

4. Five elements are established as essential components of successful invasion and egress cascade in *Plasmodium* spp. They are Ca-signaling pathway, as initial stimulus, and apical secretory organelles, PLPs, CDPKs, and different types of proteases, as tools.
5. Micronemes and rhoptries release several molecules required for processing and maturations of the essential proteinases and PLPs. Both PLP1 and PLP2 are involved in merozoites and gametocytes egress, respectively.
6. Due to their peripheral localizations, CDPKs are essentially required for the regulation of host cell attachment. Unique protein kinases (FIKKs) are characterized in *P. falciparum* triggering release of Rh bulb proteins and altering infected RBCs membrane rigidity.

4. Gubbels M-J, Duraisingh MT. Evolution of apicomplexan secretory organelles. *Int J Parasitol* 2012; 42(12):1071–1081.
5. Guerra AJ, Carruthers VB. Structural features of apicomplexan pore-forming proteins and their roles in parasite cell traversal and egress. *Toxins (Basel)* 2017; 9(9):265.
6. Hayton K, Templeton TJ. Osmiophilic bodies and the odd organelles of alveolates. *Mol Microbiol* 2008; 67(2):236-240.
7. Horta MF, Andrade LO, Martins-Duarte ES, Castro-Gomes T. Cell invasion by intracellular parasites: The many roads to infection. *J Cell Sci* 2020; 133(4): jcs232488.
8. Ishino T, Tachibana M, Baba M, Iriko H, Tsuboi T, Torii M. Observation of morphological changes of female osmiophilic bodies prior to *Plasmodium* gametocyte egress from erythrocytes. *Mol Biochem Parasitol* 2020; 236:111261.
9. Mercier C, Adjogble KD, Daubener W, Delauw MF. Dense granules: are they key organelles to help understand the parasitophorous vacuole of all apicomplexan parasites? *Int J Parasitol* 2005; 35: 829–849.
10. Mishra M, Singh V, Singh S. Structural insights into key *Plasmodium* proteases as therapeutic drug targets. *Front Microbiol* 2019; 10: 394.
11. Sassmannshausen J, Pradel G, Bennink S. Perforin-like proteins of apicomplexan parasites. *Front Cell Infect Microbiol* 2020; 10: 578883.
12. Singh P, Alaganan A, More KR, Lorthiois A, Thiberge S, Gorgette O, *et al.* Role of a patatin-like phospholipase in *Plasmodium falciparum* gametogenesis and malaria transmission. *Proc Natl Acad Sci USA* 2019; 116(35):17498-17508.

### SUGGESTED REFERENCES

1. Andreadaki M, Hanssen E, Deligianni E, Claudet C, Wengelnik K, Mollard V, *et al.* Sequential membrane rupture and vesiculation during *Plasmodium berghei* gametocyte egress from the red blood cell. *Sci Rep* 2018; 8(1):3543.
2. Azab ME, Abdel Mawla MM. Ultrastructural analysis of posterior polar endocytic phagocytosis by *Leishmania* amastigotes. *PUJ* 2011; 4(2): 219-230.
3. Friedrich N, Hagedorn M, Soldati-Favre D, Soldati T. Prison break: pathogens' strategies to egress from host cells. *Microbiol Mol Biol Rev* 2012; 76(4):707-720.

### Errata

**PUJ 2020; 13(3): 179-189. DOI: 10.21608/puj.2020.47046.1089**

**Morphology and kinetics of susceptible and resistant *Biomphalaria alexandrina* hemocytes during the first week of exposure to *Schistosoma mansoni* miracidia**

Page 182

**Table 1.** Intergroup comparison between the means of THC and DHC of susceptible and resistant groups at different experimental periods.

Hemocyte Pop & SubPops	Time of exposure									
	Control (0 hour)		6 hours PO		1 day PO		3 days PO		7 days PO	
	S	R	S	R	S	R	S	R	S	R
<b>Pop I (B)</b>										
GBL	6.67±1.63	6.50±0.84	7.00±1.67	9.00±0.63	26.83±1.60	23.83±1.33	22.50±1.97	26.00±2.20	26.00±3.03	17.33±1.51
	<i>P</i> = 0.79*		<i>P</i> = 0.02*		<i>P</i> = 0.01*		<i>P</i> = 0.24		<i>P</i> = 0.00*	
<b>Pop III (G)</b>										
TG	237.33±6.31	262.83±5.42	168.83±4.45	92.5±1.38	577±6.81	205±3.52	573.33±7.45	792.67±3.67	583.67±3.98	640.83±31.52
	<i>P</i> = 0.17		<i>P</i> = 0.00*		<i>P</i> = 0.00*		<i>P</i> = 0.00*		<i>P</i> = 0.06*	

**Pop I (B):** Population I (blast-like cells); **GBL:** Granular blast-like cells; **Pop III (G):** Population III (granulocytes); **R:** Resistant; **S:** Susceptible; **TG:** Total granulocytes.

Page 183

**Fig. 5.** Light micrographs of Giemsa-stained few-granulated granulocytes of *B. alexandrina* snails: **a-d**, Adherent cells attached by filopodia (**f**); **e-g**, Small granulocytes showing filopodia (**f**); **h-j**, Spindle to oblong few granulated granulocytes with basophilic lobulated nucleus (**n**), prominent vacuole (**v**) and few numbers of peripheral basophilic granules (**bg**).