

Dept. of Animal Hygiene and Zoonoses
Fac. of Vet. Med., Assiut University.

EPIDEMIOLOGICAL STUDY ON YERSINIOSIS IN PEDIATRIC ACUTE DIARRHEA

(With 5 Tables and 5 Figures)

By

AMAL S.M. SAYED

(Received at 19/9/2006)

دراسة وبائية على اليارسينيوسيس في حالات الإسهال الحاد في الأطفال

أمل سيد محمد سيد

تزايدت في الآونة الأخيرة حالات الإصابة بالنزلات المعوية الناتجة عن الإصابة بميكروب اليارسينيا انتيروكوليتيكا واليارسينيا سيدوتيوبركيلوسيس. وذلك أجريت هذه الدراسة لتحديد نسبة الإصابة بميكروب اليارسينيا انتيروكوليتيكا واليارسينيا سيدوتيوبركيلوسيس لدى مجموعة من الأطفال تعاني من حالات الإسهال المدمم والإسهال الغير المدمم. لذلك فقد تم جمع عدد ١٥٠ عينة عشوائية من براز الأطفال بواقع ١٠٠ عينة من حالات الإسهال الغير المدمم، ٥٠ عينة من حالات الإسهال المدمم من وحدة الجهاز الهضمي في مستشفى الأطفال بجامعة أسيوط في الفترة من يناير إلى ديسمبر ٢٠٠٥. وقد تم عزل ميكروب اليارسينيا انتيروكوليتيكا واليارسينيا سيدوتيوبركيلوسيس بنسبة ١٧,٣٣% و ١٣,٣٣% من براز الأطفال على التوالي. وقد ارتفعت نسبة الإصابة بين الأطفال في الريف (٥٢,٩%) عن الأطفال في المدينة (١١,٢٥%). وقد أثبتت الدراسة أن غالبية المرضى من الأطفال كانت تتراوح أعمارهم بين (٢٤ - ٦٠ شهر) وكانت نسبة الإصابة (٨٧,٥%) بينما كانت نسبة الإصابة (١٨,٣٣%) بين الأطفال التي تتراوح أعمارهم بين (٧ - ٢٤ شهر). كما أظهرت النتائج أن الإصابة كانت اعلى بين الإناث (٣٣,٣٣%) عن الذكور (٢٩,٥٢%). وقد تمت دراسة نسبة الإصابة على مدار العام. وقد تمت مناقشة الأهمية الصحية والوبائية ومصادر التلوث المختلفة لميكروب اليارسينيا انتيروكوليتيكا واليارسينيا سيدوتيوبركيلوسيس، هذا بالإضافة إلى مناقشة التوصيات لكيفية الحد من انتشار هذا الميكروب وكيفية الوقاية منه.

SUMMARY

Yersiniosis is considered one of the most important bacterial foodborne infections as their incidence among humans had increased dramatically. A total of one hundred and fifty random samples were collected from children with acute diarrhea. 50 of them had blood in stools and 100 had no blood in their stools. Samples were collected from the gastroenterology unit of Assiut University Children Hospital during the period from January to December 2005. The present study was designed

to estimate the incidence of *Yersinia enterocolitica* and *Yersinia pseudotuberculosis* among diarrheal children with and without blood in stools. Moreover, demographic and clinical characteristics of the *Yersinia* infected children were investigated. *Yersinia enterocolitica* and *Yersinia pseudotuberculosis* could be detected in 17.33% and 13.33 % of the examined children, respectively. Ecological distribution of the examined children revealed that the rate of infection was higher in rural areas (52.9%) than in urban areas (11.25%). The majority of cases in the present study were in the age group of (> 24-60 months) with a rate of (87.5%), followed by those in age group of (7 -24 months) with a rate of 18.33%. It has been determined that incidence of *Yersinia* species was higher among females (33.33%) than males (29.52%). Seasonal incidence of the infection by *Yersinia enterocolitica* and *Yersinia pseudotuberculosis* was studied. Public health hazard and preventive measures to control infection were discussed.

Key words: *Yersinia enterocolitica*, *Yersinia pseudotuberculosis*,
pediatric acute diarrhea

INTRODUCTION

Foodborne diseases caused by microbial pathogens remains a significant international public health problem in the 21st century, so that governments are intensifying their efforts to improve food safety (WHO, 2000). Yersiniosis is considered one of the most important bacterial foodborne infections as their incidence among humans had increased dramatically.

Yersiniosis is an infection associated with either *Yersinia enterocolitica* or *Yersinia pseudotuberculosis*. Epidemiological studies has been implicated animals including pigs, rodents, rabbits, sheep, goats, cattle, horses, dogs and cats as reservoirs of pathogenic *Yersinia* species (Butler, 1998). Transmission of infection to human occurs by ingestion of contaminated food or water and less commonly by direct contact with infected animals and patients (Butler, 1998). It was been reported that milk, dairy products, powdered milk, cheese, meat and vegetables are considered as the major sources of infection in different reported outbreaks (Toora *et al.*, 1994).

Yersinia enterocolitica infection can assume many different forms depending on the strain and dose of the organism as well as the age and physical condition of the person infected (Gray, 1995). Several outbreaks of *Yersinia enterocolitica* food poisoning were reported by different authors (Barret, 1989; Greenwood and Hooper, 1990 & Ackers,

- King, M.E.; Kirakofe, S.D.; Stevenson, J.S. and Schalles, R.R. (1982): Effect of stage of the estrous cycle on interval to estrus after PGF_{2α} in beef cattle. *Theriogenology*. 18: 191.
- Larson, L.L. and Ball, P.J.H. (1992): Regulation of estrous cycles in dairy cattle: a review. *Theriogenology*. 38: 255.
- Lucy, M.C.; Stevenson, J.S. and Call. E.P (1986): Controlling first service and calving interval by prostaglandin F_{2α} gonadotrophin-releasing hormone and timed insemination. *J. Dairy Sci.* 69: 2186.
- Mee, O.M.; Stevenson, J.S.; Alexander, B.M. and Sasser, R.G. (1993): Administration of GnRH at estrus influences pregnancy rates, serum concentration of LH, FSH, estradiol-17B, pregnancy-specific protein b, and progesterone, proportion of luteal cell types, and in vitro production of progesterone in dairy cows. *J. Anim. Sci.* 71, 185-198.
- Momcilovic, D.; Archbald, L.F.; Walters, A.; Tran, T.; Kelbert, D. and Risco, C. (1998): Reproductive performance of lactating dairy cows treated with gonadotrophin-releasing hormone (GnRH) and/or prostaglandin F_{2α} (PGF_{2α}) for synchronization of estrus and ovulation. *Theriogenology*, 50: 1131-1139.
- Momont, H.W. and Seguin, B.E. (1983): Treatment of unobserved estrus in lactating dairy cows with prostaglandin F_{2α} products. Page 28 in *The Compendium on Continuing Education for the Practicing Veterinarian on Reproductive Management in Food Animals*. Univ. Minnesota, St. Paul.
- Nebel, R.L. and Jobst, S.M. (1998): Evaluation of systematic breeding program for lactating dairy cows: a review. *J. Dairy Sci.* 81: 1169- 1174.
- Paul, V. and Prakash, B.S. (2005): Efficacy of the Ovsynch protocol for synchronization of ovulation and fixed-time artificial insemination in Murrah buffaloes (*Bubalus bubalis*). *Theriogenology*, 64: 1049-1060.
- Pietro S.B.; Ed Hoffman M.; Valquiria H.B.; Renato C.B. and Rodolfo C.B. (2003): Evaluation of synchronization of ovulation for fixed timed insemination in buffalo (*Bubalus bubalis*). *Brazilian J. Vet. Res. Anim. Sci.* 40: 6: Sao Paulo. Approved para publication: 17/09/2003.
- Pursley, J.R.; Kosorok, M.R. and Wiltbank, M.C. (1997a): Reproductive management of lactating dairy cows using synchronization of ovulation. *J. Dairy Sci.* 80: 301 -306.

- Pursley, J.R.; Mee, M.O. and Wiltbank, M.C. (1995): Synchronization of ovulation in dairy cows using PGF_{2α} and GnRH. *Theriogenology*, 44: 915 – 923.
- Pursley, J.R.; Wiltbank, M.C.; Stevenson, J.S.; Ottobre, J.S.; Garverick, H.A. and Anderson, L.L. (1997b): Pregnancy rates per artificial insemination for cows and heifers inseminated at a synchronized ovulation or synchronized estrus. *J. Dairy Sci.* 80: 295-300.
- Roy, G.L. and Twargiramungu, H.A. Fixed –time AI program using the GnRH- PGF_{2α} –GnRH method for beef females. *J. Anim. Sci.* 74 (suppl.): 222 (Abstr).
- Silcox, R.W., Powell, K.L. and Kiser, T.E. (1993): Ability of dominant follicles (DF) to respond to exogenous GnRH administration is depended on their stage of development. *J. Anim. Sci.* 71 (Suppl 1): 513 Abstr.
- Snedecor, G.W. and Cochran, W.G. (1980): *Statistical methods* 7th ed. J.B.H publishing Comp. Oxford.
- Stevenson, J.S.; Kobayashi, Y. and Thompson, K.E. (1999): Reproductive performance of dairy cows in various programmed breeding systems including Ovsynch and combination of gonadotrophin-releasing hormone and prostaglandin F_{2α}. *J. Dairy Sci.* 82: 506- 515.
- Stevenson, J.S.; Lucy, M.C. and Call, E.P. (1987): Failure of timed inseminations and associated luteal function in dairy cattle after two injections of prostaglandin F_{2α}. *Theriogenology*. 28: 937.
- Stevenson, J.S.; Mee, M.O. and Stewart, R.E. (1989): Conception rates and calving intervals after prostaglandin F_{2α} or rebreeding progesterone in dairy cows. *J. Dairy Sci.* 72: 208.
- Stevenson, J.S.; Smith, J.F. and Hawkins, D.E. (2000): Reproductive outcomes of dairy heifers treated with combination of prostaglandin F_{2α}, norgestomet, and gonadotrophin-releasing hormone. *J. Dairy Sci.* 83: 1- 8.

1995). The most frequent manifestation is gastroenteritis, which primarily affects children especially infants are considered highly susceptible to infection in the first year of life. Exudative pharyngitis and septicemia may also occur. Although *Y. enterocolitica* causes a syndrome which mimics appendicitis oftenly in older children and young adults (Naktin and Beaves, 1999 & Lamps *et al.*, 2001), *Y. enterocolitica* is implicated as a major bacterial cause of appendicitis (Shorter *et al.*, 1998; Lamps *et al.*, 2001; Sakellaris *et al.*, 2004 and Sayed and Hassan, 2005). Serious cases of infection may occur with rectal bleeding and perforation of the ileum.

It is interesting to note that, secondary immunological mediated complications may develop after complete recovery of infection such as arthritis, erythema nodosum and to a lesser extent Reiter's syndrome, glomerulonephritis and myocarditis, (Bottone, 1997; and Strobel *et al.*, 2000).

Yersinia pseudotuberculosis mainly affects children, adolescents and young adults (Butler, 1998). The most clinical forms are mesenteric adenitis, pseudoappendicitis, fever, vomiting and diarrhea in 20% of the infected patients (Acha and Szyfer, 1991). Moreover, *Y. pseudotuberculosis* has been isolated from cases of appendicitis (Puylaert *et al.*, 1989 & Sayed and Hassan, 2005).

The present investigation was designed to estimate the prevalence of *Yersinia enterocolitica* and *Yersinia pseudotuberculosis* among children with diarrhea and to study the possible risk factors in acquiring the infection.

MATERIALS and METHODS

Sample Collection:

One hundred and fifty random stool samples were collected from children with acute diarrhea (100 had no blood in stools and 50 had blood in stools). Samples were collected from gastroenterology unit of Assiut University Children Hospital during the period from January to December 2005. Precoded questionnaires were completed at the time of recruitment to record demographic details and clinical history.

Isolation and identification of *Yersinia* species:

Cold enrichment technique: swabs of stool specimens were enriched in phosphate buffer saline pH 7.6 (PBS) supplemented with 2% peptone and incubated at 4°C for 14 days (Varnam and Evans, 1991).

Isolation on *Yersinia* selective agar:

Loopfuls from the enriched broth were streaked onto *Yersinia* selective agar plates supplemented with Cefsulodin-Irgasan-Novobiocin

(CIN) and incubated at 28°C for 24 hours. Dark red, bull eye-like colonies were screened by biochemical reactions according to the technique described by Varnam and Evans (1991).

Determination of Virulence markers:

Autoagglutination and congo red uptake were used to identify virulent strains of *Y. enterocolitica* (Varnam and Evans, 1991).

RESULTS

Table 1: Prevalence of *Yersinia* species among the examined children

Type of diarrhea	No. of samples	<i>Yersinia</i> species	
		<i>Y. enterocolitica</i>	<i>Y. pseudotuberculosis</i>
Non bloody diarrhea	100	*16 (16 %)	7 (7 %)
Bloody diarrhea	50	*10 (20 %)	13 (26 %)
Total	150	26 (17.33%)	20 (13.33%)

* All of the isolated *Yersinia enterocolitica* strains were virulent

Table 2: Ecological distribution of *Yersinia* infection among the examined children

Residence	No. of samples	<i>Yersinia</i> species		Total
		<i>Y. enterocolitica</i>	<i>Y. pseudotuberculosis</i>	
Rural	70	20 (28.6%)	17 (24.3%)	37 (52.9%)
Urban	80	6 (7.5%)	3 (3.75%)	9 (11.25 %)

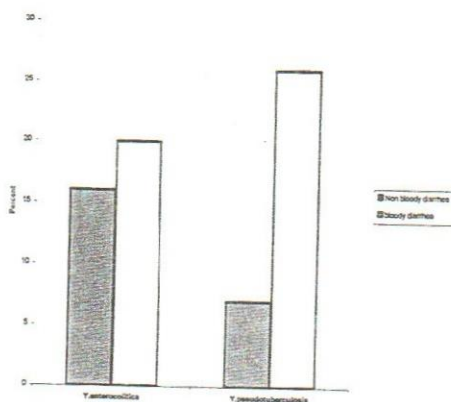


Fig. 1: Prevalence of *Yersinia* species among the examined children

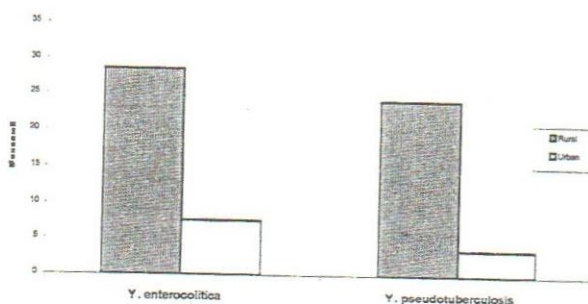


Fig. 2: Ecological distribution of *Yersinia* infection in the examined children

Table 3: Age-wise prevalence of *Yersinia* infection among the examined children

Age-wise (months)	No. of samples	<i>Yersinia</i> species		Total
		<i>Y. enterocolitica</i>	<i>Y. pseudotuberculosis</i>	
<7	50	-	-	-
7-24	60	6 (10%)	5 (8.33 %)	11 (18.33%)
> 24 -60	40	20 (50%)	15 (37.5 %)	35 (87.5%)

Table 4: Occurrence of *Yersinia* infection in male and female children

Sex	No. of samples	<i>Yersinia</i> species		Total
		<i>Y. enterocolitica</i>	<i>Y. pseudotuberculosis</i>	
Male	105	18 (17.14%)	13 (12.38%)	31 (29.52 %)
Female	45	8 (17.8%)	7 (15.56%)	15 (33.33 %)

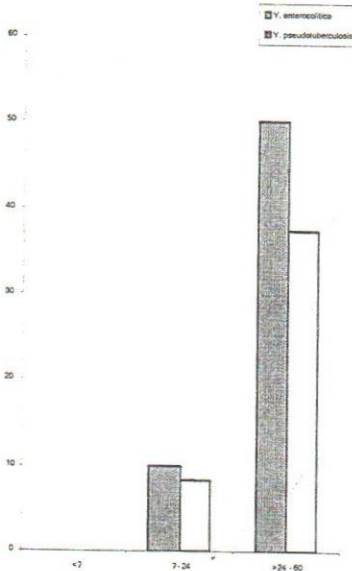


Fig. 3: Age-wise prevalence of *Yersinia* infection among the examined children

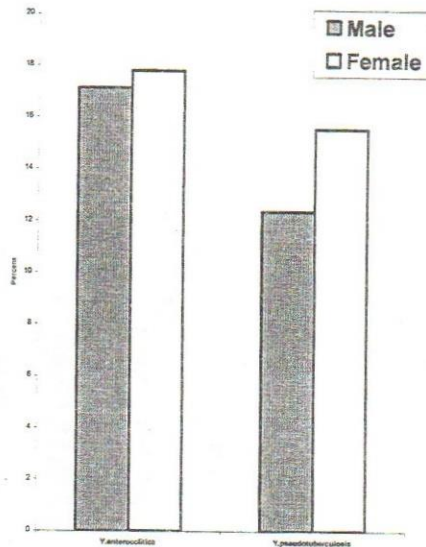


Fig. 4: Occurrence of *Yersinia* infection in male and female children

Table 5: Incidence of *Yersinia* species in relation to the months of the year

Month	No. of samples	<i>Y. enterocolitica</i>		<i>Y. pseudotuberculosis</i>	
		No.	%	No.	%
January	10	-	-	-	-
February	10	-	-	-	-
March	10	-	-	-	-
April	12	3	25	1	8.33
May	15	4	26.67	2	13.33
June	15	3	20	4	26.67
July	15	4	26.67	5	33.33
August	12	4	33.33	4	33.33
September	15	4	26.67	2	13.33
October	15	4	26.67	2	13.33
November	11	-	-	-	-
December	10	-	-	-	-

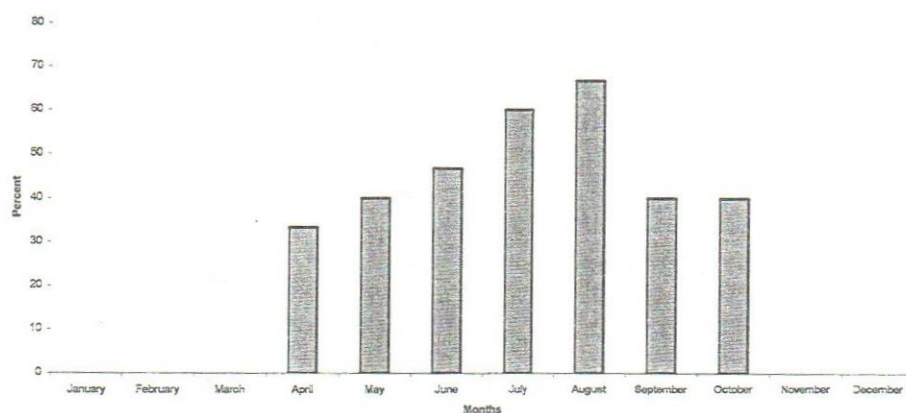


Fig. 5: Incidence of *Yersinia* species in relation to the months of the year

DISCUSSION

Foodborne bacterial gastrointestinal infections are important causes of morbidity and mortality worldwide, and despite successful control programs in some developed countries, these infections continue to have a major impact on public health and economy (Varnam and Evans, 1991). *Yersinia* species are one of the most reported pathogens incriminated in gastrointestinal illness (Kapperud, 1991).

Results of this study revealed that the prevalence of *Yersinia enterocolitica* among the examined children was 17.33% however, the prevalence of *Yersinia pseudotuberculosis* was 13.33% in the examined samples (Table and Figure 1).

Clinical and laboratory investigation revealed that *Y. enterocolitica* was isolated from 16% and 20% of the examined children with nonbloody diarrhea and bloody diarrhea, respectively (Table and Figure 1).

It has been confirmed that all of the isolated strains of *Y. enterocolitica* were virulent (Table 1). It has been noted that the virulence of *Y. enterocolitica* results from a complex interplay between a series of temperature-controlled plasmid borne and chromosomal genes (Robins-Browne, 1997). Moreover, *Y. pseudotuberculosis* was isolated from 7% and 26% of the examined children with nonbloody diarrhea and bloody diarrhea, respectively (Table and Figure 1). Several investigators reported variable prevalence rates in different geographical areas. Higher prevalence rates were detected with rates of 53% and 77.6% reported by Greenwood and Hooper, (1986) and Metchock *et al.* (1991), respectively. However, lower prevalence rates were detected with rates of 0.9%, 0.64%, 2%, 2.7%, 0.54% and 7.1% reported by Ogunsanya *et al.* (1994); Essers *et al.* (2000); Kafetzis *et al.* (2001); Soltan-Dallal and Moezardalan, (2004); Klein *et al.* (2006) and Koehler *et al.* (2006), respectively.

The higher prevalence rate detected in this study may be due to the high prevalence rate of *Yersinia* species among animals in the studied areas as reported previously by El-Prince and Sayed, (2002).

Ecological distribution of the infected children in the present study (Table and Figure 2) revealed that the prevalence of *Yersinia* species were higher in rural areas (52.9%) than in urban areas (11.25%). The high prevalence rate reported in rural areas may be attributed to the high risk of infection from animal as well as high contamination rates of food and water in these area.

Data illustrated in (Table and Figure 3) reveals that the majority of infected children were in the age group (>24-60 months) with a rate of 87.5% followed by children in the age group (7-24 months) with a rate of 18.33%, however *Yersinia* species were not isolated from children with age group younger than (7 months). It has been reported that the peak age related incidence of *Yersinia* species was in young children especially younger than 5 years (Metchock *et al.*, 1991 and Olesen *et al.*, 2005).

Results in (Table and Figure 4) declared that *Yersinia* species were slightly higher among females with a percent of 33.33% than males with a rate of 29.52%. *Y. enterocolitica* was isolated from male and female children with a rate of 17.14% and 17.8%, respectively while, *Y. pseudotuberculosis* were detected in 12.38% and 15.56% of the examined males and females children, respectively. It seems from the obtained results that gender does not play a major role in acquiring infection whereas, the prevalence rate in both sexes was nearly the same.

Studying the seasonal distribution of *Yersinia* infection as illustrated in (Table and Figure 5) revealed that *Yersinia* infection were most common in warm months with incidence rate varied from 20% - 26.67% in case of *Y. enterocolitica*. However, the incidence of *Y. pseudotuberculosis* varied from 8.33% to 33.33%. Results obtained in this study agrees with that reported by Hayashidani *et al.*, (1995). However, several investigators had reported that *Yersinia* infection occurs throughout the year [Fukushima *et al.* (1987); Prentice *et al.* (1991)] and Wormser *et al.* (1996).

In conclusion, results obtained in this study reflect the public health hazard of *Y. enterocolitica* and *Y. pseudotuberculosis* which obligate applying control measures to reduce the risk of human infection by collaboration of governments, food industry and consumers.

ACKNOWLEDGEMENTS

Sincere thanks to staff members at gastroenterology unit of Assiut University Children Hospital for their great help to obtain the samples.

REFERENCES

- Acha, P.N. and Szyfres, B. (1991): Pseudotuberculosis Yersiniosis. In: Zoonoses and communicable diseases common to man and animals. Sec. ed. Pan American Health Organization. pp-140-144

- Ackers, M. (1995): Summary report: Outbreak of *Yersinia enterocolitica* infections in the Upper Valley of Vermont and New Hampshire (letter). Atlanta, G.A; Foodborne and Diarrheal Diseases Branch Centers for Disease Control and Prevention. Cited in: Ryser, E.T. (1998): Public health concerns. In Marth, E.H. and Steele, J.L. Applied Dairy Microbiology. Marcel Dekker. New York. pp. 263-404.
- Barrett, N.J. (1989): Milkborne disease in England and Wales in the 1980s. J. Soc. Dairy Technol., 42: 4
- Bottone, E.J. (1997): *Yersinia enterocolitica*: The Charisma continues. Clin. Microbiol. Rev., 10 (2): 257-276
- Butler, T. (1998): Yersiniosis and plague. In Zoonoses. Biology, Clinical practice and Public Health Control. eds. Palmers, S. R.; Soulsby, L. and Simpson, D.I.H. Oxford pp. 281-293.
- El -Prince, E. and Sayed, A.S.M. (2002): Prevalence of *Yersinia enterocolitica* in milk and faeces of some lactating animals and typing of the obtained isolates by plasmid profile. Assiut Vet. Med. J. 46 (92): 54-71.
- Essers, B., Burnens, A.P.; Lanfranchini, F.M.; Somaruga, S.G., Von Vigier, R.O.; Schaad, U.B.; Aebi, C. and Bianchetti, M.G. (2000): Acute community-acquired diarrhea requiring hospital admission in Swiss children. Clin. Infect Dis. 31(1): 192-196.
- Fukushima, H.; Hoshina, K.; Nakamura, R.; Itoh, Y. and Gomyoda, M. (1987): Epidemiological study of *Yersinia enterocolitica* and *Yersinia pseudotuberculosis* in Shimane Prefecture, Japan. Contrib. Microbiol. Immunol. 9: 103-110.
- Gray, L.D. (1995): *Escherichia*, *Salmonella*, *Shigella* and *Yersinia*, In: Murray, P.R.; Baron, E.J.; Tenover, F.C. and Tenover, R.H. Manual of clinical Microbiology 6th ed. Washington, D.C. ASM Press p.450
- Greenwood, M.H. and Hooper, W.L. (1986): Human carriage of *Yersinia* species. J. Med. Microbiol. 23(4): 345-348
- Greenwood, M.H. and Hooper, W.L. (1990): Excretion of *Yersinia* spp. Associated with consumption of pasteurized milk. Epidemiol. Infect., 104 (3): 99-104
- Hayashidani, H.; Ohtomo, Y.; Toyokawa, Y.; Saito, M.; Kaneko, K-H.; Kosuge, J.; Kato, M.; Ogawa, M.; and Kapperud, G. (1995): Potential sources of sporadic human infection with *Yersinia enterocolitica* serovar O:8 in Aomori Prefecture, Japan. J. Clin. Microbiol. 33 (5) :1253- 1257

- Kafetzis, D.A.; Maltezou, H.C.; Zafeiropoulou, A.; Attilakos, A.; Stavrinadis, C. and Foustoukou, M. (2001):* Epidemiology, clinical course and impact on hospitalization costs of acute diarrhea among hospitalized children in Athens, Greece. *Scand. J. Infect. Dis.* 33 (9) 681-685.
- Kapperud, G. (1991):* *Yersinia enterocolitica* in food hygiene. *Int. J. food Microbiol.* 12: 53-66.
- Klein, E.J.; Boster, D.R.; Stapp, J.R.; Wells, J.G.; Qin, X.; Clausen, C.R.; Swerdlow, D.L.; Braden, C.R. and Tarr, P.I (2006):* Diarrhea etiology in a children's hospital emergency department: A Prospective Cohort Study. *Clin. Infect. Dis.* 43 (7): 807-813.
- Koehler, K.M.; Lasky, T.; Fein, S.B.; DeLong, S.M; Hawkins, M.A.; Rabatsky-Ehr, T.; Ray, S.M.; Shiferaw, B.; Swanson, E. and Vugia, D.J. (2006):* Population-based incidence of infection with selected bacterial enteric pathogens in children younger than five years of age, 1996-1998. *Pediatr Infect Dis. J.* 25 (2):129-134.
- Lamps, L.W.; Madhusudhan, K.T. and Greenson, J.K. (2001):* The role of *Y. enterocolitica* and *Y. pseudotuberculosis* in granulomatous appendicitis: A histologic and molecular study. *Am. J. Surg. Pathol.* 25: 508-515
- Metchock, B.; Lonsway, D.R.; Carter, G.P; Lee, L.A. and McGowan, J.E Jr. (1991):* *Yersinia enterocolitica*: a frequent seasonal stool isolate from children at an urban hospital in the southeast United States. *J. Clin Microbiol.* 29 (12): 2868-2869.
- Naktin, J. and Beavis, K.G. (1999):* *Yersinia enterocolitica* and *Yersinia pseudotuberculosis*. *Clin. Lab. Med.* 19: 523-536
- Ogunsanya, T.; Rotimi, V.O. and Adenuga, A. (1994):* A study of the etiological agents of childhood diarrhoea in Lagos, Nigeria. *J. Med. Microbiol.* 40 (1): 10 -14
- Olesen, B.; Neimann, J.; Bottiger, B.; Ethelberg, S.; Schiellerup, P.; Jensen, C.; Helms, M.; Scheutz, F.; Olsen, K.E.P.; Kroghfelt, K.; Petersen, E.; Molbak, K. and Gerner- Smidt, P. (2005):* Etiology of diarrhea in young children in Denmark: a case - control study. *J. Clin. Microbiol.* 43 (8) 3636-3641
- Prentice, M.B.; Cope, D. and Swann, R.A. (1991):* The epidemiology of *Yersinia enterocolitica* infection in British Isles 1983-1988. *Contrib. Microbiol. Immunol.* 12:17-25.

- Puylaert, J.B.; Vermeijden, R.J.; Van der Werf, S.D.; Doornbos, L. and Koumans, R.K. (1989): Incidence and Sonographic diagnosis of bacterial ileocaecitis masquerading as appendicitis. *Lancet* 2 (8654):84-86
- Robins-Browne, R.M. (1997): *Yersinia enterocolitica*. In: Food Microbiology Fundamentals and Frontiers M.P. Doyle, L.R. Beuchat and T.J. Montville (eds), ASM Press, Washington, D.C.pp.192-215.
- Sakellaris, G.; Kakavelakis, K.; Stathopoulos, E.; Michailidou, H. and Charissis, G. (2004): A palpable right lower abdominal mass due to *Yersinia* mesenteric lymphadenitis. *Pediatr. Surg. Int.* 20 (2) : 155-157
- Sayed, A.S.M. and Hassan, H.I. (2005): Impact of infection by some bacterial zoonotic pathogens on appendix in man. *Assiut Vet. Med. J.* 51 (106): 224-239.
- Shorter, N.A.; Thompson, M.D.; Mooney, D.P. and Modlin, J.F. (1998): Surgical aspects of an outbreak of *Yersinia enterocolitis*. *Pediatr. Surg. Int.* 13 (1): 2-5.
- Soltan-Dallal M.M. and Moezardalan K. (2004): Frequency of *Yersinia* species infection in paediatric acute diarrhoea in Tehran. *East Mediterr Health J.* 10(1-2):152-158.
- Strobel, E.; Heesemann, J.; Mayer, G.; Peters, J.; Muller-Wehrich, S. and Emmerhing, P. (2000): Bacteriological and serological findings in a further case of transfusion- mediated *Yersinia enterocolitica* sepsis. *J.Clinic. Microbiol.*, 38 (7): 2788-2790.
- Toora, S.; Budu- Amoako, E.; Albett, R.F. and Smith, J. (1994): Isolation of *Yersinia enterocolitica* from ready -to eat foods and pork by a simple two step procedure. *Food Microbiol.* 11: 369 -374
- Varnam, A.H. and Evans, M.G. (1991): Foodborne pathogens. An illustrated Textbook. Wolfe Publishing Ltd., New York pp. 129-155 & 209-234.
- World Health Organization (2000): Food Safety and foodborne illness. Fact sheet No.237. Available at: www.who.int/inf-fs/en/fact237.html.
- Wormser, S.; Nilehn, B. and Sternby, N.H. (1996): *Yersinia enterocolitica*: clinical observation, p. 83-94. In E.J. Bottone (ed), *Yersinia enterocolitica*, CRC press, Inc., Boca Raton, Fla.

طفيليات:

- ١٤٩ بعض الدراسات الوبائية والطفيلية على مدى انتشار طفيليات الجهاز الهضمي في الابل وحيدة السنم بمنطقة شلاتين ، محافظة البحر الأحمر ، مصر ومحاولة علاجها.
عثمان محمد مهران.

أمراض دواجن:

- ١٦٣ بعض الدراسات عن عدوى الميكروب المكور العنقودي في الدجاج بمحافظة أسيوط.
هبة الله عبد الحليم محمد ، منال حسن ثابت ، نيفين عبد الغنى النسر.

جراحة:

- ١٧٩ دراسات اشعاعية على كسور والتهاب العظام السمسانية العلوية في الحمير.
نبيل أحمد مسك ، أمل جلال أبو العلا ، بهاء الدين على عبد اللاه حسين.
١٨٨ التطبيق الحقلى لبعض تقنيات تخفيف الشد التقويمية لاعادة بناء الجلد.
أمل جلال أبو العلا.

- ٢٠٦ إعادة هيكلة الجهاز البولى بعد قطع جزئى للمثانة.
ك. عماره ، ح. عقاد ، أ. بوكى ، م. ميليزى.

ولادة وتناسليات:

- ٢١٤ علاج خمول المبايض بعد الولادة فى الجاموس وتقييمه الاقتصادى.
كمال كمال متولى.

- ٢٢٦ علاقة عدم توازن الأكسدة ومضادات الأكسدة بالخصوبة فى فترة ما بعد الولادة فى الأبقار.
جابر أحمد مجاهد ، صلاح القندور ، رشاد عثمان ، فوزى الزهيرى.

- ٢٤١ تقييم معدل الحمل فى الجاموس المصرى فى فترة ما بعد الولادة باستخدام الحقن المزدوج للبروستاجلاندين أو نظام تزامن التبويض.
فوزى الزهيرى ، عبد الخالق نصرة ، صلاح القندور.

أمراض مشتركة:

- ٢٥١ دراسة وبائية على اليارسينيوسيس فى حالات الإسهال الحاد فى الأطفال.
أمل سيد محمد سيد.

لجنة الطباعة:

قام بإعداد وكتابة وتصوير وطبع هذا العدد كل من:

السيدة/ كوكب أحمد على مسك

السيد/ محمد محمود حسين عاشور

السيدة/ منى عبده عبدالحافظ

السيدة/ منال ابراهيم ناجى العقاد