



Migrating Levels of Toxic Heavy Metals in Locally Made Food Packaging Containers

Saimah khan¹, Abdul Rahman Khan^{2*}

¹ Dept. of Chemistry, Integral University, Lucknow - 226026

² Dean of Science, Head of the Dept. of Chemistry, Integral University, Lucknow – 226026



Abstract

Background/Objectives: Earth's crust contains heavy metals as natural ingredients. Heavy metals create a major health problem for the humans because of their persistence, highly toxic nature and tendency to accumulate in the ecosystem. The main aim of this study was to measure the concentration of heavy metals in the locally made food containers at three different temperatures, using various simulating solvents as per guidelines Bureau of Indian standard (BIS), by using Atomic Absorption spectroscopy (AAS).

Methods/Statistical analysis: The estimation of heavy metals such as Cd, Cr, Ni, Cu, Mn, Fe, Pb and Zn of plastic leachates were detected by using Atomic absorption spectrophotometer (AAS). The results were expressed statistically using mean \pm standard deviation of triplicate reading of each sample and corresponding control solution. The dunnett comparison were made to assess the level of significance by applying one way analysis of variance (ANOVA) using computer based software 'Graph Pad PRISM-5'.

Findings: The level of migration of heavy metals above the permitted limit was in the following pattern:

• At Elevated Condition ($60 \pm 2^\circ\text{C}$ for 2 h):

Pb(1.9-1.002ppm) > Cu(1.61-1.02ppm) > Ni(1.31-1.01ppm) > Zn(1.02-1.006ppm) > Mn(1.01-1.001ppm).

• At Ambient Condition ($25 \pm 2^\circ\text{C}$ for 24 h):

Pb(1.9-1.01ppm) > Cu(1.61-1.01ppm) > Ni(1.31-1.01ppm) in S3, S5, S2, S4 > Mn(1.01-1.001ppm) > Zn(1.002ppm).
Ni(1.01ppm) > Cu(1.009-1.003ppm) > Pb(1.007ppm) > Zn(1.001ppm).

• At Refrigerated Condition ($4 \pm 1^\circ\text{C}$ for 72 h):

Ni(1.01ppm) in S2 > Cu(1.009-1.003ppm) in S4, S5, S2 > Pb(1.007ppm) in S1 > Zn(1.001ppm) in S1.

The results show that the amount of migration of heavy metals from food packaging containers followed the pattern: Elevated condition > Ambient condition > Refrigerated condition.

Novelty/Applications: This research aims to obtain a better understanding of locally made food packaging plastics having no specification of additives and their related potential hazards.

Keywords: Heavy Metals, Migration, Toxicity, Simulating Solvents, food packaging containers.

1. Introduction

Plastics have remarkably resourceful applications and food packaging is one of the most important applications^[1]. The use of plastic in packaging of food is mainly due to their low cost, ease of processing and manufacturing. Apart from the basic monomeric units, all plastics contain an additional component known as additive^[2]. These additives are usually added to improve physical and chemical properties of plastics. The commonly used additives in most of the plastics are fillers, plasticizers, antiblock agents, antioxidants, lubricants and antistatic agents etc. Each of the additives used has its own distinctive characteristics

properties. Generally, food packaging plastics contain low concentrations of metallic compounds^[3]. The heavy metals in plastics are present in the form of inorganic pigments, stabilizers and antioxidants etc^[4-5].

The additives are present in plastic in high amount and thus make quantification of heavy metals very difficult. Generally, these metals are added to plastics as compounds, which often do not bond chemically to the matrix of the plastic materials and can migrate easily under the influence of physicochemical factors like sunlight, temperature, type of solvents and pH of the stored commodity and liberate toxic substances to

*Corresponding author e-mail: Email id: saimah@iul.ac.in, +91-9628414484, headchem@iul.ac.in, +91-9450156047

Receive Date: 21 August 2020, Revise Date: 25 November 2020, Accept Date: 21 July 2021

DOI: 10.21608/EJCHEM.2021.40023.2815

©2022 National Information and Documentation Center (NIDOC)

air, water, food, food stimulants, saliva and sweat etc [5-8]. From various research, it has been reported that the leaching of heavy metals like lead(Pb), nickel(Ni), cadmium(Cd), chromium(Cr), copper(Cu), iron(Fe), manganese(Mn), zinc(Zn) from plastics food packaging can occur into the simulating solvents [9-12]. This can interrupt the normal physiological functions of the body cells and other organs.

Physicians and scientists believed that the no percentage of heavy metals in blood is safe or normal. Also, the exposure to very little amount may have prolonged and significant affects in children, though no characteristics indications are observed at low level exposure [13-28]. In order to safeguard the health of a consumer, the regulation guidelines [29-32] for the suitable use of plastic for food packaging application have been formulated all over the world. Bureau of Indian Standards (BIS) designed the national standards. In this regard, this research was designed to determine the concentration of heavy metals in locally made food packaging containers purchased from various districts of U.P, India.

2. Materials and Methods

In present study, 150 samples of five different brands of plastic food containers of Polyethylene terephthalate (PETE or PET) and Polypropylene (PP) were purchased from various districts of U.P, India and processed in the laboratory. Based on the nature of food, different food simulating solvents are used. All the samples were prepared in different simulating solvents in different temperature time conditions and then analyzed. The details of the simulating conditions are given in the table 1 and table 2.

Table 1: Food categorisation and Food simulants

Standard	Food categorisation	Food simulant
BIS/INDIA	Non-acidic (pH>5), including oil-in-water emulsions of low or high fat content.	Water(W) Double distilled water
	Acidic food (pH<5)	3% (v/v) Acetic Acid solution in double distilled water
	Alcoholic beverages(8% ethanol)	8% (v/v) Ethanol solution in double distilled water
	Saline nature of food	0.9% (w/v) NaCl and 5% (w/v) Na ₂ CO ₃ solution in double distilled water.

Table 2: Time- temperature conditions in global migration tests.

STANDARD	TEST CONDITIONS	REMARKS
BIS/INDIA	a) 4 °C – 72h	Refrigerated condition
	b) 60 °C – 2h	Elevated condition
	c) 25 °C – 24h	Ambient condition

The food containers were washed thoroughly with double distilled water in order to reduce the migration of surface layer chemicals. The food containers were made to cut into 10x5 cm size pieces to expose them adequately to simulating solvents in a ratio of 1cm² of plastic in 2ml of simulating solvent under various simulated conditions as provided by regulatory agencies.

In this method, 10ml sample solution was taken in a conical flask and digested with 1.0 ml concentrated HNO₃. The digested sample was made to 10 ml using 1% HNO₃. Parallel sets having simulating solvents (control) only were also prepared under similar conditions and were considered as basal control. The estimation of heavy metals such as Cd, Cr, Ni, Cu, Mn, Fe, Pb and Zn (USP) [33] of plastic leachates were detected by using atomic absorption spectrophotometer (AAS).

2.1. Statistical analysis

The results were expressed statistically using mean ± standard deviation of triplicate reading of each sample and corresponding control solution. The dunnett comparison were made to assess the level of significance by applying one way analysis of variance (ANOVA) using computer based software 'Graph Pad PRISM-5'. The p value less than 0.05 in figures are marked with * and are considered as significant.

3. Results and Discussion

In the production of polymers, including polyethylene (PE), polypropylene (PP), polystyrene (PS), polyvinyl chloride (PVC), polyethylene terephthalate (PET), polycarbonate (PC), acrylonitrile-butadiene-styrene (ABS) and polyamide (PA), different catalyst are used that can contain low levels of heavy metals. Generally, plastics used for food packaging foods also contain these metals in the form of pigments and stabilizers. The quantification of heavy metals is important because they have the potential to contaminate the food and causes toxicity [34-37]. The migrations of heavy metals in food

containers were dependent on temperature as well as simulating solvent. The trend of leaching of heavy metals follows the order :

Elevated condition > Ambient condition > Refrigerated condition

All the samples were found migrating heavy metals in all simulating solvents at three different temperature conditions. Out of which few samples leached heavy metals which were above allowed limit. According to BIS, metal content should not be more than 1ppm except Cd which should not be more than 0.1ppm.

Elevated Condition (60±2°C for 2 h)

The result shows that all samples were found containing Zn, Ni, Mn, Cu, Cr and Pb in varying concentrations are given in figure 1-5. Cd was not detected in any sample. The concentration of heavy metals above permissible limit shown in the table 3.

Table-3 Migrating concentration of heavy metal above permissible limit in different simulating solvent.

Simulating solvents	Heavy metals (concentration in parts per million (ppm))				
	Pb	Cu	Ni	Zn	Mn
Double distilled water	1.9	1.02	1.31-1.21	-	1.008-1.001
3% Acetic acid	1.2-1.002	1.61	1.102-1.006	1.02	-
8% Ethanol	1.029	1.36-1.02			
0.9% Sodium chloride		1.30	1.08	1.006	1.01
5% Sodium carbonate	1.1-1.04		1.02		

The differences were significant between mean concentrations of metals in different food container samples using the above mentioned simulating solvents.

•The result also shows that higher level of migration of heavy metals above allowed limit follows the pattern:

Pb(1.9-1.002ppm) in S1, S3, S5, S1, S2 > Cu(1.61-1.02ppm) in S5,S4,S3 > Ni(1.31-1.006ppm) in S4,S3,S2,S5,S4 > Zn(1.02-1.006ppm) in S2,S4 > Mn(1.01-1.001ppm) in S5,S2,S3.

Ambient Condition (25±2°C for 24 h)

The result shows that all samples were found containing Zn, Ni, Mn, Cu, Cr, Cd and Pb in varying concentrations is given in Figure 6-10. The concentration of heavy metals above permissible limit shown in the table 4.

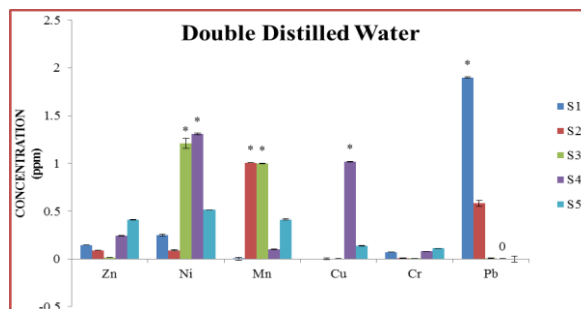


Figure-1 The concentration of metals (ppm) in double distilled water at 60±2°C for 2 h.

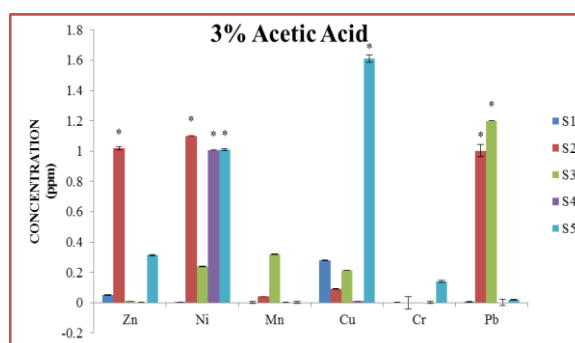


Figure-2 The concentration of metals (ppm) in 3% acetic acid at 60±2°C for 2 h.

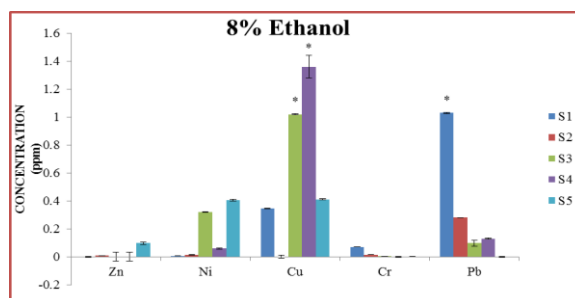


Figure-3 The concentration of metals (ppm) in 8% ethanol at 60±2°C for 2 h.

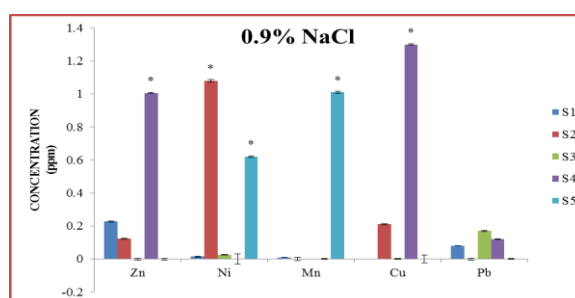


Figure-4 The concentration of metals (ppm) in 0.9% NaCl at 60±2°C for 2 h.

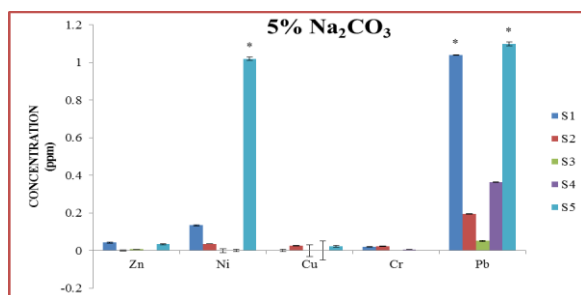


Figure-5 The concentration of metals (ppm) in 5% Na₂CO₃ at 60±2°C for 2 h.

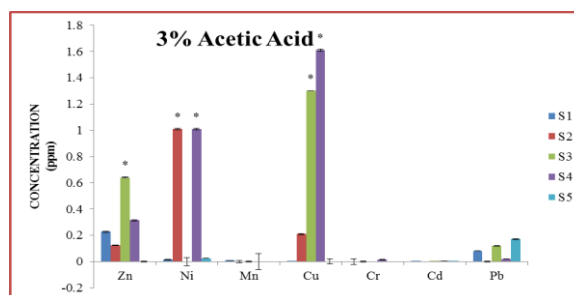


Figure-7 The concentration of metals (ppm) in 3% acetic acid at 25±2°C for 24 h.

Table-4 Migrating concentration of heavy metal above permissible limit in different simulating solvent.

Simulating solvents	Heavy metals (concentration in parts per million (ppm))				
	Pb	Cu	Ni	Zn	Mn
Double distilled water	1.9	1.02	1.31-1.21	-	1.01-1.001
3% Acetic acid		1.61-1.30	1.01		-
8% Ethanol	1.2		1.102	1.002	
0.9% Sodium chloride	1.029	1.36			1.01
5% Sodium carbonate	1.04-1.01	1.02	1.02		

The differences were significant between mean concentrations of metals in different food container samples using the above mentioned simulating solvents.

Thus, the result shows that higher level of migration of heavy metals above allowed limit follows the pattern:

- Pb(1.9-1.01ppm) in S1, S3, S5, S1 >
- Cu(1.61-1.02ppm) in S4, S3, S5 >
- Ni(1.31-1.01ppm) in S3, S5, S2, S4 >
- Mn(1.01-1.001ppm) in S2, S4, S5 >
- Zn(1.002ppm) in S2.

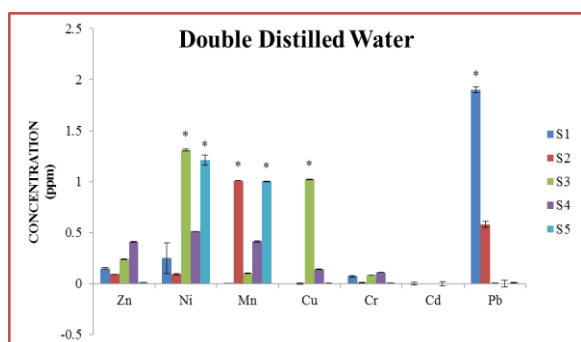


Figure-6 The concentration of metals (ppm) in double distilled water at 25±2°C for 24 h.

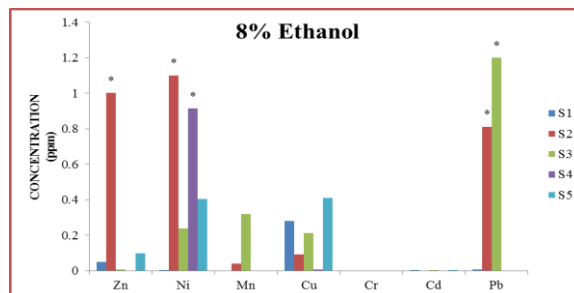


Figure-8 The concentration of metals (ppm) in 8% ethanol at 25±2°C for 24 h.

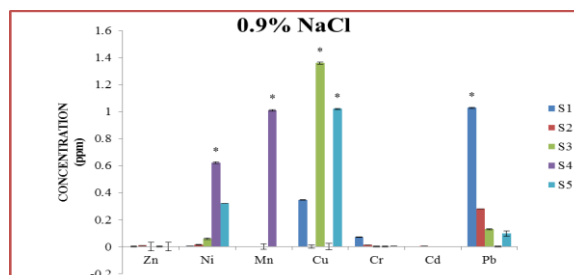


Figure-9 The concentration of metals (ppm) in 0.9% NaCl at 25±2°C for 24 h.

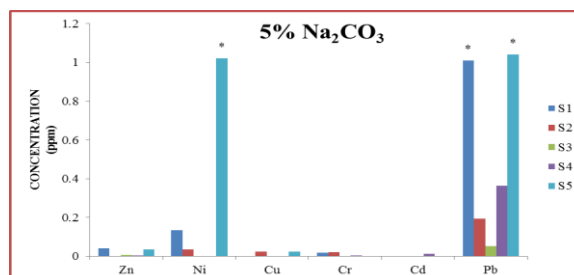


Figure-10 The concentration of metals (ppm) in 5% Na₂CO₃ at 25±2°C for 24 h.

At Refrigerated Condition (4±1°C for 72 h)

The result shows that all samples were found containing Zn, Ni, Mn, Cu, Cr and Pb in varying concentrations are given in Figure 11-15. The concentration of heavy metals above permissible limit shown in the table 5.

Table-5 Migrating concentration of heavy metal above permissible limit in different simulating solvent.

Simulating solvents	Heavy metals (concentration in parts per million (ppm))				
	Pb	Cu	Ni	Zn	Mn
Double distilled water	1.007	1.008	1.01	-	1.003-1.002
3% Acetic acid		1.009-1.007		1.001	-
8% Ethanol					
0.9% Sodium chloride		1.009-1.003			
5% Sodium carbonate					

The differences were significant between mean concentrations of metals in different food container samples using the above mentioned simulating solvents.

Thus, the result shows that higher level of migration of heavy metals above allowed limit follows the pattern:

Ni(1.01ppm) in S2 > Cu(1.009-1.003ppm) in S4, S5, S2 > Pb(1.007ppm) in S1 > Mn (1.003 – 1.002) in S3, S4 > Zn(1.001ppm) in S1.

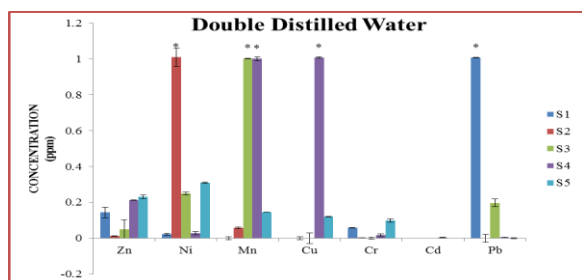


Figure-11 The concentration of metals (ppm) in double distilled water at 4±1°C for 72 h.

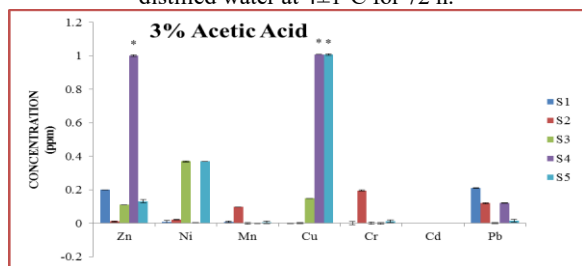


Figure-12 The concentration of metals (ppm) in 3% acetic acid at 4±1°C for 72 h.

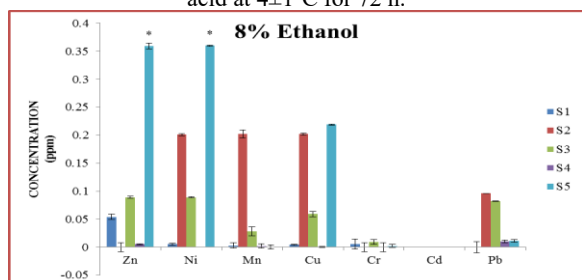


Figure-13 The concentration of metals (ppm) in 8% ethanol at 4±1°C for 72 h.

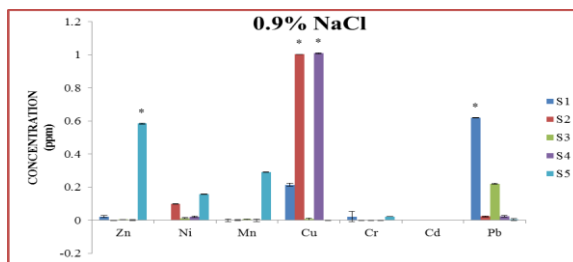


Figure-14 The concentration of metals (ppm) in 0.9% NaCl at 4±1°C for 72 h.

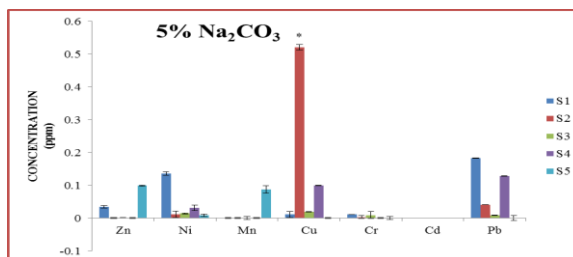


Figure-15 The concentration of metals (ppm) in 5% Na₂CO₃ at 4±1°C for 72 h.

Table-6 Migration level of heavy metals in different temperature-time condition.

Metal s	Migration concentration at Elevated condition	Migration concentration at Ambient condition	Migration concentration at Refrigerated condition
Pb	1.9-1.002ppm	1.9-1.01ppm	1.007ppm
Cu	1.61-1.02ppm	1.61-1.02ppm	1.009-1.003ppm
Ni	1.31-1.006ppm	1.31-1.01ppm	1.01ppm
Zn	1.02-1.006ppm	1.002ppm	1.001ppm
Mn	1.01-1.002ppm	1.01-1.002ppm	1.008-1.002ppm

From the results, it was also concluded that the migrations of heavy metals from food packaging container follows the pattern: Pb > Cu > Ni > Zn > Mn. Moreover, it was also concluded that maximum percentage of migration occur at elevated condition than ambient condition and least at refrigerated condition.

4. Conclusion

From the results, it was concluded that all the samples were found containing Zn, Ni, Mn, Cu, Cr and Pb in varying concentrations. Out of which most of the samples contain heavy metals above allowed limit. According to IS, metal content should not be more than 1ppm except Cd should not be more than 0.1 ppm.

The concentration of Pb, Cu, Ni, Zn and Mn above allowed limit in all simulating solvents at three

different temperature-time conditions ranges from 1.9 ppm- 1.002ppm. The following Table-6 show the level of migration of heavy metals at different temperature-time condition.

5. Acknowledgement

The authors are thankful to our Hon'ble Chancellor Prof. S.W. Akhtar, Integral University, Lucknow for providing necessary facilities.

6. References

- [1] PlasticsEurope (2009) Compelling facts about plastics. An analysis of European plastics production, demand and recovery for 2008. Plastics Europe, Brussels. PlasticsEurope
<http://www.plasticseurope.org/Documents/Document/20100225141556>
Brochure_UK_FactsFigures_2009_22sept_6_Final-20090930-001-EN-v1.pdf Accessed 1 March 2011.
- [2] OECD (2004) Emission Scenario Document on Plastic Additives. Series on Emission Scenario Documents, No. 3. OECD Environmental Health and Safety Publications. Environment Directorate, Paris.
- [3] Petersen, J. H. Chapter. 12. Migration of compounds from food contact materials and articles. In Food Safety: Contaminants and Toxins; D'Mello, J. P. F., Ed.; CABI: Oxon, Wallingford, U.K., 2003; pp 271-291.
- [4] Fordham, P. J.; Gramshaw, J. W.; Castle, L. Analysis for organic residues from aids to polymerization used to make plastics intended for food contact. Food Addit. Contam. 2001, 18 (5) 461-471.
- [5] Krzymien, M. E.; Carlsson, D. J.; Dschênes, L.; Mercier, M. Analyses of volatile transformation products from additives in ζ -irradiated polyethylene package. Food Addit. Contam. 2001, 18 (8), 739-749.
- [6] Neri'n, C.; Ferná'ndez, C.; Domen'õ, C.; Salafrañca, J. Determination of potential migrants in polycarbonate containers used for microwave ovens by high-performance liquid chromatography with ultraviolet and fluorescence detection. J. Agric. Food Chem. 2003, 51, 5647-5653.
- [7] Moskovkin, A. S. Chromatographic-mass-spectrometric determination of toxic substances liberated from polymeric materials. J. Anal. Chem. 2002, 57 (6), 507-512.
- [8] Cheng, C, Shi, H, Adams, C. Assessment of metal contaminations leaching out from recycling plastic bottles upon treatments. Environ Sci Pollut Res Int 2010; 17: 1323.
- [9] Westerhoff, P, Prapaipong, P, Shock, E. Antimony leaching from polyethylene terephthalate (PET) plastic used for bottled drinking water. Water Res 2008; 42: 551-556.
- [10] Jarup, L. Hazards of heavy metal contamination. Br Med Bull 2003; 68: 167-182.
- [11] Perring, L, Alonso, M, Andrey, D. An evaluation of analytical techniques for determination of lead, cadmium, chromium, and mercury in food-packaging materials. Fresenius J Anal Chem 2001; 370: 76-81.
- [12] Keresztes, S, Tatar, E, Mihucz, V. Leaching of antimony from polyethylene terephthalate (PET) bottles into mineral water. Sci Total Environ 2009; 407: 4731-4735.
- [13] Holbrook J. Some imported packaging found to contain heavy metals. Plastics News, Crain Communications, Detroit, MI, www.plasticsnews.com/article/20120706/NEWS/307069975/some-imported-packaging-found-to-contain-heavy-metals (2012, accessed 21 May 2015).
- [14] California. 2001. No significant risk levels (NSRLs) for the Proposition 65 carcinogens lead and lead compounds (oral). Reproductive and Cancer Hazard Assessment Section, Office of Environmental Health Hazard Assessment (OEHHA), California Environmental Protection Agency, www.oehha.ca.gov/prop65/law/pdf_zip/Lead_oralNSRL.pdf (2001, accessed 21 May 2015).
- [15] Whitt, M, Vorst, K, Brown, W. Survey of heavy metal contamination in recycled polyethylene terephthalate used for food packaging. J Plast Film Sheet 2013; 29: 163-173.
- [16] Widen, H, Leufven, A, Nielsen, T. Migration of model contaminants from PET bottles: Influence of temperature, food simulant and functional barrier. Food Addit Contam 2004; 21: 993-1006.
- [17] P. Mercea., Physicochemical processes involved in migration of bisphenol A from polycarbonate, J Appl Polym Sci 2009, 112(2), p579-593.
- [18] Marsh, K, Bugusu, B. Food packaging - roles, materials, and environmental issues. Soc Food Sci Technol 2007; 72: R39-R55.
- [19] Bayer, F. Polyethylene terephthalate recycling for food-contact applications: Testing, safety and technologies: A global perspective. Food Addit Contam 2002; 19: 111-134.
- [20] Department of Toxic Substances Control, California. Toxics in packaging prevention act, www.dtsc.ca.gov/ToxicsInPackaging/upload/TiP_PreventionAct1209.pdf (2006, accessed 21 May 2015).
- [21] Nam SH, Seo YM, Kim MG. 2010. Bisphenol A migration from polycarbonate baby bottle with repeated use. Chemosphere 79: 949-52.
- [22] Sakurai, H, Noro, J, Kawase, A. Digestion of plastic materials for the determination of toxic metals with a microwave oven for household use. Anal Sci 2006; 22: 225-228.
- [23] Kim, KC, Park, YB, Lee, MJ. Levels of heavy metals in candy packages and candies likely to be consumed by small children. Food Res Int 2008; 41: 411-418.
- [24] Alam O, Sijia W, Wentao L. Heavy metals dispersion during thermal treatment of plastic bags and its recovery. J Environ Manag. 2018;212:367-374.
- [25] Jaishankar M, Tseten T, Anbalagan N, Mathew BB, Beeregowda KN. Toxicity, mechanism and health effects of some heavy metals. Interdiscip Toxicol. 2014;7(2):60-72.
- [26] Kang SG, Zhu JX. Metals contamination and leaching potential in plastic toys bought on the Beijing market. Adv Mater Res. 2014;878:112-121.
- [27] S Khan, A.R.Khan, contamination of toxic heavy metal in locally made plastics food packaging container, GJSFR, 15(1), p 18-23 (2015).
- [28] S Khan, A.R.Khan, toxic heavy metal contamination in locally made plastic food containers, IJSER, 6(6), p 45-47 (2015).
- [29] European Commission (Health and Consumer Directorate-General). Union guidelines on regulation (EU) No 10/2011 on plastic materials and articles intended to come into contact with food. (2014).

- [30] European Committee for Standardization. EN 1186-1: materials and articles in contact with foodstuffs. Plastics. Part 1: guide to the selection of conditions and test methods for overall migration. Brussels: European Committee for Standardization. (2002).
- [31] Commission regulation (eu) no 10/2011 of january 2011 on plastic materials and articles intended to come into contact with food text with eea relevance, (2011)
- [32] Commission directive 2002/72/ec relating to plastic materials and articles intended to come into contact with foodstuffs, (2002).
- [33] The United States Pharmacopoeia: The National Formulary. USP-23. United State Pharmacopoeial Convention, Inc., 12601.Twinbrook Parkway, Rockville, MD 20852, (1995).
- [34] O.-W. Lau, S.-K. Wong, Contamination in food from packaging material, *Journal of Chromatography A*, 882 (1-2) (2000), pp. 255-270,
- [35] J. Muncke, T. Backhaus, B. Geueke, M.V. Maffini, O. V. Martin, J.P. Myers, ..., M. ScheringScientific challenges in the risk assessment of food contact materials, *Environmental Health Perspectives* (2017).
- [36] Ohidul Alam, Li Yang and Xu Yanchun, Determination of the selected heavy metal and metalloid contents in various types of plastic bags, *Journal of Environmental Health Science and Engineering* (2019), 17(12).
- [37] Adel Saeed, Ahmed M H Saeedan and Sami Z M Saeed, Assessment of some heavy metals in plastic toys sold in Aden governorate markets-Yemen, *Arabian Journal of Scientific Research* (2020), 2.12.