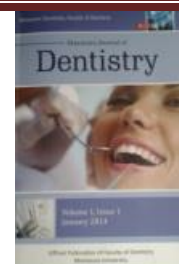




## Detection of the periodontal pathogen *Porphyromonas gingivalis* in Oral Squamous Cell Carcinoma



Nehad M.Monier\*1, Islam M. Atteya2, Hamdia Askar3, Samah Helmy4

1Teaching assistant of oral medicine and periodontology, Faculty of Dentistry, Mansoura University, Egypt.

2Lecturer of Oral medicine and periodontology, Faculty of Dentistry, Mansoura University, Egypt.

3Professor of Medical Microbiology and Immunology, Faculty of Medicine, Mansoura University, Egypt.

4Professor of Oral medicine and periodontology, Faculty of Dentistry, Mansoura University, Egypt.

### Abstract:

Background: The concept of infection-based carcinogenesis is gaining an increasing attention. Also periodontitis has been extensively studied as possible risk factor for gastrointestinal cancers including oral cancer.

Methodology: Using conventional PCR, we detected the presence of the key periodontal pathogen *Porphyromonas gingivalis* (*P. gingivalis*) in 25 oral cancer fresh tissue specimens versus 25 healthy oral mucosal tissue..

Results: *P. gingivalis* showed significantly higher prevalence in control group with slightly higher loads in cancer tissue. Bacterial presence was not found to be correlated with tumor progression.

Conclusion: *P. gingivalis* was not found to play a possible role in the cancerous lesion. More studies should be implemented to investigate the bacterial involvement in the oral tumors.

### Introduction

Oral cancer is a malignant tumor of which 90% of cases are oral squamous cell carcinomas (OSCCs)[1]. OSCC is generally considered the 6th most common cancer worldwide and is among the three most common cancers in South-Central Asia [2] . Despite therapeutic advances, the 5-year survival rate is approximately 50%, making The most significantly recognized risk factors for OSCC include tobacco smoking, alcohol consumption and chronic dental trauma[3-5]. However, around 15% of patients develop OSCC in the absence of these known risk factors, which creates the need to investigate the presence of other possible undefined contributors including the role of the oral bacteria.

Epidemiological studies for so long have been indicating that poor oral hygiene and tooth loss were significantly associated with OSCC, providing the first signs that oral bacteria may play a role in the development of oral cancer [6,7]. Also many recent studies and meta-analyses have demonstrated a significant association of periodontal disease with oral cancer [8-10]. However, no causal relationship has been clearly demonstrated to date.

Increasing evidence is linking the infection-driven inflammation and cancers at different body sites with both viral and bacterial infections addressed. The first regarded organism as a carcinogenic agent by the WHO is *Helicobacter pylori* that causes gastric carcinoma[11,12]. More recently, mounting evidence has correlated oral pathogens, namely *Porphyromonas gingivalis*, with different types of gastrointestinal tumors[13-15].

Oral cavity biofilms can host a population of more than 500 different bacterial species [16]. Under certain conditions, the homeostatic state of oral bacterial flora can be lost, leading to an increase in the abundance of pathogenic microorganisms or the expression of virulence factors. To date, various bacterial taxa have been correlated with oral cancer and epithelial premalignant lesions[17-20]. Chronic inflammation caused by bacteria is one of the potential pathways of their contribution to various stages of oral carcinogenesis [21]. inflammation-induced DNA damage in epithelial cells caused by bacteria and endotoxins[22]. Periodontitis is a common chronic inflammatory disease. Deep periodontal pockets contain large numbers of bacteria and inflammatory factors, which can cause diseases of adjacent and remote tissues and organs[23]. Some studies have reported that there might be correlations between periodontal disease and malignant tumours, especially oral cancer[24,25]. *P. gingivalis* is a major periodontal pathogens that has an already established role in the initiation and progression of the periodontal disease[26]. The relationship between *P. gingivalis* and OSCC remains controversial. However, few clinical and experimental studies have suggested a possible connection [27]

To investigate this possibility, *P. gingivalis* was detected in OSCC patients through conventional PCR

### METHODOLOGY

#### Study population

Twenty-five oral cancer tissue specimens were collected from patients with histologically verified squamous-cell carcinoma diagnosed at an earlier biopsy. Eleven males and fourteen females, with average age  $54.92 \pm 12.70$  years, were

being treated in Oncology center of Mansoura university between September 2017 and August 2018. Twenty-five healthy controls (12 males and 13 females; average age  $34.28 \pm 1.86$  years) were recruited from patients undergoing minor oral surgeries at the Faculty of Dentistry, Mansoura University.

#### Patient examination:

Personal, medical, dental history of patients were obtained of the database of OCMU for cancer patients. Preoperative periodontal examination was implemented to record the Plaque index (PII), Gingival Index (GI), probing depth (PD) and clinical attachment loss (CAL) for selected teeth. Tumor stage was identified after resection according to tumor-node-metastasis (TNM) classification by American Joint Committee on Cancer/Union International Cancer Center. (8th edition, 2017).

#### Specimen collection:

OSCC tissue specimens were harvested from the fresh surgically resected tumors. Healthy specimens were obtained during oral surgical procedures.

#### DNA Extraction and PCR Assay

Experiments were conducted at Department of Medical Microbiology and Immunology, faculty of medicine, Mansoura University. All tissue specimens were homogenized as approximately 25 mg of tissue. Genomic DNA was extracted using a commercial kit QIAamp DNA mini Kit (Qiagen, Germany) according to the manufacturer's instructions. The DNA yield, concentration and purity were assessed using the spectrophotometry (NanoDrop 2000, Thermo Scientific, Wilmington, Delaware USA).

Specific DNA primers for Porphyromonas gingivalis ATCC 33277 were supplied by invitrogen, Thermo Fisher Scientific. The forward primer: AGG CAG CTT GCC ATA CTG CG. The reverse primer is: ACT GTT AGC AAC TAC CGA TGT. PCR amplification of 16S rDNA genes was performed in a thermal cycler PTC-100 PCR Programmable Thermal Controller, MJ Research. The conditions were:  $94^{\circ}\text{C}$  30 sec,  $55^{\circ}\text{C}$  30 sec,  $72^{\circ}\text{C}$  1 min. The Master mix used was 2x PCR Master mix Solution (i-Taq)(iNtRON Biotechnology). The reaction volume was prepared as a 25 $\mu\text{l}$  mixture according to the manufacturer's recommendations. The predicted amplicon length is 404 bp.

#### Gel Electrophoresis

The amplification products were analyzed by 1.5% agarose gel electrophoresis in 1X TAE buffer (pH 8). The used DNA marker was 10  $\mu\text{l}$  of (50327) - SimplyLoad™ 100 bp DNA ladder, Lonza, Rockland, USA. Gels were run in a Bio-Rad apparatus at constant voltage (75V) for 60 minutes. Products were visualized with ethidium bromide under UV illumination.

#### Data analysis

Data were fed to the computer and analyzed using IBM SPSS software package version 22.0. Qualitative data were described using number and percent. Quantitative data were described using median (minimum and maximum) for non-parametric data and mean, standard deviation for parametric data after testing normality using Shapiro-Wilk test. Significance of the obtained results was judged at the (0.05) level.

#### RESULTS

The gel images of the PCR yields are shown in figure (1). Analyzing the results showed that *P. gingivalis* was significantly higher in control group. Only 12% of cancer cases were positive for *P. gingivalis* in relation to 44% positive cases of control (table 1).

Table (1): PCR- detected presence of *P. gingivalis* in cancerous tissues of OSCC versus normal oral mucosa.

Strain	Result	OSCC	
(n=25)	Control		
(n=25)	Test of significance		
		n	%
<i>P.gingivalis</i>	Negative	22	88.0
	Positive	3	12.0
		n	%
		11	44.0
*statically significant (if $p < 0.05$ ), $\chi^2 = \text{Chi-Square test}$			

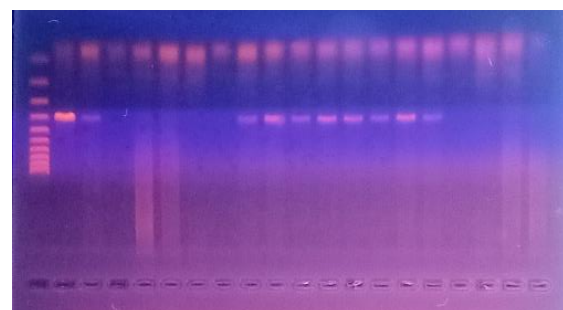
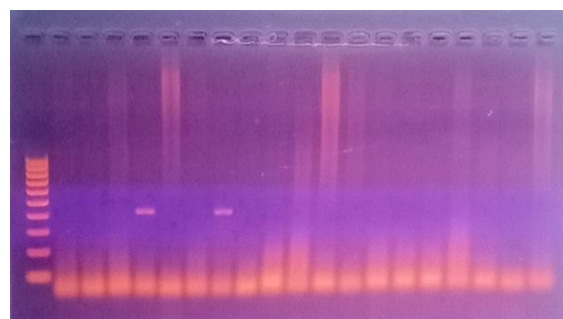


Figure (1) : Agarose gel electrophoresis of PCR products. Lane M shows the DNA marker (SimplyLoad™ 100 bp DNA ladder, Lonza, Rockland, USA). Lanes show specific DNA bands of the corresponding specimens (A) *P.gingivalis* of cancer group. (size <404 bp). (B) *P.gingivalis* of control group (size <404 bp).

In table 2, absolute presence the bacteria was not found to have a statistically significant difference regarding TNM staging or HP grade of the cancerous lesion ( $P > 0.05$ ).

Table (2): Relation between *P. gingivalis* , Tumor characteristics among OSCC cases

## Tumor Clinical

Parameters	
<b>P. gingivalis</b>	
<b>T (Tumor Size) MC</b>	
<b>P=0.39</b>	
<b>N (Nodal Metastasis) MC</b>	
<b>P=0.37</b>	
<b>Tumor stage MC</b>	
<b>P=0.08</b>	
<b>HP grade MC</b>	
<b>P=0.16</b>	

Positive detection of *P. gingivalis* showed no significant correlation with any of the clinical periodontal indices. Table (3).

Table (3): Relation between *P. gingivalis* & clinical indices among cases

clinical indices among Cases	<i>P. gingivalis</i>	
<b>presence</b>		
<b>absent</b>		
<b>n=20 Present</b>		
<b>n=3</b>		
<b>Plaque Index</b>		
<b>PII</b>		
<b>mean±SD</b>	<b>1.58±0.45</b>	<b>2.03±0.67</b>
<b>Gingival index</b>		
<b>GI</b>		
<b>mean±SD</b>	<b>1.56±0.48</b>	<b>1.97±0.64</b>
<b>Probing depth</b>		
<b>PD</b>		
<b>mean±SD</b>	<b>1.64±0.54</b>	<b>2.06±0.61</b>
<b>Clinical Attachment loss</b>		
<b>CAL</b>		
<b>Median (range)</b>	<b>1.35</b>	
<b>(0.04-4.75)</b>	<b>2.85</b>	
<b>(1.38-4.45)</b>		

## DISCUSSION

In contrast to most of the previous work [28-32], we found *P. gingivalis* to be more frequent in controls and detected only in 12% of cancer cases. The inconsistency is probably owing to different targeted strain or detection methodology. The strain used in this study (ATCC 33277) was previously reported to be associated with oral cancer [33-35]. it may be

the case that the more virulent strains of *P. gingivalis* like W83, W50, ATCC 49417 are more detected and involved in carcinogenesis [36,37].

Tissue specimens are preferred to saliva when studying the microbial shifts as it provides subsite specific composition [38]. PCR detection is considered ideal for bacterial identification being a widely available, sensitive, specific technique that is not influenced by microorganism growth like culture. Also it showed higher detection rate when employing fresh tissue rather than paraffin embedded tissue[39]. The possibility of tissue contamination with plaque biofilm or saliva has been overcome by sampling deeper parts of the cancerous Hooper et al performed surface decontamination of specimens by initial betadine immersion and washing with PBS and gave comparable results[40,41]. Tissue slices studies by immunohistochemistry found that the bacteria tend to extend to deeper cancer tissue layers than those found in normal tissues [32,42]. The composition of bacteria in cancer and para-cancerous tissues was found to be more complex. The cancerous tissue had more bacterial species than subgingival plaque of the same patient[42], suggesting that the higher bacterial loads in cancer tissue is not only derived from periodontally affected tissue but possibly also from other anatomical locations.

In the current study, *p.gingivalis* was not shown to have a significant correlation with clinical and pathological parameters of the cancerous lesion. A direct correlation for *P. gingivalis* positive rate and TNM stage progression and poorer tissue differentiation was reported by katz [32], chang [42] and Ganly [43]. Tumors with higher *P. gingivalis* loads lower periodontal disease severity. Only 3 cases were positive for *P. gingivalis* forming 12% of cases which renders their results not indicative.

## CONCLUSION

*P.gingivalis* didn't show such an association with oral cancer tissue or tumor progression.

## RECOMMENDATION

Future in vitro and in vivo longitudinal studies for human cohorts and improved measurements for periodontal disease are needed with more thorough focus on the progressively activated bacterial functions in relation to oral carcinogenesis.

## AKNOWLEDGMENTS

The Authors express their appreciation for the staff of the OCMU for providing help and allowing access for data collection.

## References

- 1-Rivera, C., *Essentials of oral cancer. International journal of clinical and experimental pathology*, 2015. 8(9): .p. 11884
- 2-Warnakulasuriya, S., *Global epidemiology of oral and oropharyngeal cancer. Oral oncology*, 2009. 45(4-5): .p. 309-316
- 3-Hashibe, M., et al., *Alcohol drinking in never users of tobacco, cigarette smoking in never drinkers, and the risk of head and neck cancer: pooled analysis in the International Head and Neck Cancer Epidemiology Consortium. Journal of the National Cancer Institute*, 2007. 99(10): p. 777-789
- 4-Ahrens, W., et al., *Oral health, dental care and mouthwash associated with upper aerodigestive tract cancer risk in Europe: the ARCAGE study. Oral oncology*, 2014. 50(6): p. 616-625
- 5-Perry, B.J., et al., *Sites of origin of oral cavity cancer in nonsmokers vs smokers: possible evidence of dental trauma carcinogenesis and its importance compared with human papillomavirus. JAMA Otolaryngology–Head & Neck Surgery*, 2015. 141(1): p. 5-11
- Meurman, J.H., *Infectious and dietary risk factors of oral cancer. Oral oncology*, 2010. 46(6): p. 411-413
- 7-Wang, R.-S., et al., *Tooth loss and risk of head and neck cancer: a meta-analysis. PloS one*, 2013. 8
- 8-Tezal, M., et al., *Chronic periodontitis and the incidence of head and neck squamous cell carcinoma. Cancer epidemiology and prevention biomarkers*, 2009. 18(9): p. 2406-2412
- 9-Zeng, X.-T., et al., *Periodontal disease and risk of head and neck cancer: a meta-analysis of observational studies. PloS one*, 2013. 8
10. Tezal, M., et al., *Chronic periodontitis and the risk of tongue cancer. Archives of Otolaryngology–Head & Neck Surgery*, 2007. 133(5): p. 450-454
11. Correa, P. and J. Houghton, *Carcinogenesis of Helicobacter pylori. Gastroenterology*, 2007. 133(2): p. 659-672
12. Peek, R.M. and M.J. Blaser, *Helicobacter pylori and gastrointestinal tract adenocarcinomas. Nature Reviews Cancer*, 2002. 2(1): p. 28-37
13. Atanasova, K.R. and Ö. Yilmaz, *Looking in the Porphyromonas gingivalis cabinet of curiosities: the microbiom, the host and cancer association. Molecular oral microbiology*, 2014. 29(2): p. 55-66
15. Wang, X., Y. Yang, and M.M. Huycke, *Microbiome-driven carcinogenesis in colorectal cancer: Models and mechanisms. Free radical biology and medicine*, 2017. 105: p. 3-15
16. Aas, J.A., et al., *Defining the normal bacterial flora of the oral cavity. Journal of clinical microbiology*, 2005. 43(11): p. 5721-5732
17. Hooper, S.J., et al., *A molecular analysis of the bacteria present within oral squamous cell carcinoma. Journal of medical microbiology*, 2007. 56(12): p. 1651-1659
18. Hooper, S.J., et al., *Viable bacteria present within oral squamous cell carcinoma tissue. Journal of clinical microbiology*, 2006. 44(5): p. 1719-1725
19. Pushalkar, S., et al., *Comparison of oral microbiota in tumor and non-tumor tissues of patients with oral squamous cell carcinoma. BMC microbiology*, 2012. 12(1): .p. 144
20. Schmidt, B.L., et al., *Changes in abundance of oral microbiota associated with oral cancer. PloS one*, 2014. 9(6)
21. Grivennikov, S.I. and M. Karin, *Inflammation and oncogenesis: a vicious connection. Current opinion in genetics & development*, 2010. 20(1): p. 65-71
22. El-Said, K.S., et al., *Molecular mechanism of DNA damage induced by titanium dioxide nanoparticles in toll-like receptor 3 or 4 expressing human hepatocarcinoma cell lines. Journal of nanobiotechnology*, 2014. 12(1): p. 48
23. Hajishengallis, G., *Periodontitis: from microbial immune subversion to systemic inflammation. Nature Reviews Immunology*, 2015. 15(1): p. 30-44
24. Gholizadeh, P., et al., *Role of oral microbiome on oral cancers, a review. Biomedicine & Pharmacotherapy*, 2016. 84: p. 552-558
25. Moraes, R.C.d., et al., *Association between chronic periodontitis and oral/oropharyngeal cancer. Brazilian dental journal*, 2016. 27(3): p. 261-266
26. da Silva-Boghossian, C.M., et al., *Association of red complex, A. actinomycetemcomitans and non-oral bacteria with periodontal diseases. Archives of oral biology*, 2011. 56(9): p. 899-906
27. Geng, F., et al., *Persistent exposure to Porphyromonas gingivalis promotes proliferative and invasion capabilities, and tumorigenic properties of human immortalized oral epithelial cells. Frontiers in cellular and infection microbiology*, 2017. 7: p. 57
28. Nagy, K.N., et al., *The microflora associated with human oral carcinomas. Oral Oncology*, 1998. 34(4): p. 304-308
29. Al-Hebshi, N.N., et al., *Inflammatory bacteriome featuring Fusobacterium nucleatum and Pseudomonas aeruginosa identified in association with oral squamous cell carcinoma. Sci Rep*, 2017. 7(1): p. 1834

30. Chang, C., et al., *The prevalence rate of periodontal pathogens and its association with oral squamous cell carcinoma. Applied microbiology and biotechnology*, 2019. 103(3): p. 1393-1404
31. Bolz, J., et al., *Bacterial colonization of microbial biofilms in oral squamous cell carcinoma. Clinical oral investigations*, 2014. 18(2): p. 409-414
32. Katz J, O.M., Pauley KM, Bhattacharyya I, Cha S, *Presence of Porphyromonas gingivalis in gingival squamous cell carcinoma. Int J Oral Sci* 2011. 3: p. 209-215
33. Sayehmiri, F., et al., *The prevalence rate of Porphyromonas gingivalis and its association with cancer: a systematic review and meta-analysis. 2015, SAGE Publications Sage UK: London, England*
34. Groeger S, D.E., Gonzales JR, Chakraborty T, Meyle J, *B7-H1 and B7-DC receptors of oral squamous carcinoma cells are upregulated by Porphyromonas gingivalis. Immunobiology*, 2011. 216: p. 1302-1310
35. Inaba, H., et al., *Porphyromonas gingivalis promote invasion of oral squamous cell carcinoma through induction of pro MMP 9 and its activation. Cellular microbiology*, 2014. 16(1): p. 131-145
36. Grenier, D. and D. Mayrand, *Selected characteristics of pathogenic and nonpathogenic strains of Bacteroides gingivalis. Journal of clinical microbiology*, 1987. 25(4): p. 738-740
37. Neiders, M., et al., *Heterogeneity of virulence among strains of Bacteroides gingivalis. Journal of periodontal research*, 1989. 24(3): p. 192-198
- Schmidt, B.L., et al., *Changes in abundance of oral microbiota associated with oral cancer. PloS one*, 2014. (69)
39. Deacon, E., et al., *Epstein-Barr virus and Hodgkin's disease: transcriptional analysis of virus latency in the malignant cells. Journal of Experimental Medicine*, 1993. 177(2): p. 339-349
40. Hooper SJ, C.S., Lewis MA, Spratt DA, Wade WG, Wilson MJ, *Viable bacteria present within oral squamous cell carcinoma tissue. J Clin Microbiol*, 2006. 44: p. 1719-1925
41. Hooper SJ, C.S.-J., Fardy MJ, Lewis MA, Spratt DA, Wade WG, et al., *A molecular analysis of the bacteria present within oral squamous cell carcinoma. J Med Microbiol*, 2007. 56: p. 1651-1659.