

"Telehealth intervention in insurance health hospitals"

Authors

Kamal Mohamed Nagieb El- tabey¹; Heba Elsayed²; Sally
Alsabagh³

1Port Said University, Port Said, EGYPT

2Port Said University - Port Said University

3Faculty of pharmacy, Suez Canal University,Portsaid, Egyp

*Faculty Of Medicine
PortSaid University*

Abstract:

Background: Telehealth is the utilization of advanced data and correspondence innovations, to get to medical care benefits from a distance and deal with your medical services.

Methods: Quasi-experimental design was used. The study was conducted in insurance health hospital. A systematic random sample of patients under certain criteria. tools: five tools were used, the first tool was interviewing questionnaire cover the demographic characteristics of patients .The second tool was the satisfaction Reporting Scale, the third tool was a standardized checklist of steps in the proper use of Telehealth cure, the fourth tool was self-monitoring, control, and avoidance of infection. The fifth tool was the ADL scale.

Results: The study revealed that there was highly statistical significant improvement in the post intervention than pre intervention in the consuming time, efforts, money, activities of daily living and self-monitoring of control and avoidance of infection.

Conclusion: using Telehealth care has a positive effect on the health and being of people.

Keywords: Telehealth, intervention, insurance, health, hospital

Introduction

Demographic change, increasing pace of ongoing illnesses and neglected needs for more customized care are patterns that require a new and incorporated framework the wellbeing and social consideration approach. Experts should work across areas collectively with shared objectives and assets to give coordination answering each individual's consideration necessities. Progressed information and Communications Technology (ICT) is an incredible new chance to accomplish the coordination of care, to supplant today's chain of response for separate threats to health.

The system works in both Arabic and English. Multi-user (no maximum) with an interactive interface that suits every user. The program agrees with the latest medical standards: ICD10 International Classification of Diseases issued by the World Health Organization (WHO), in addition to the standard specifications set by the Ministry of Health regarding medical registration in hospitals.

The possibility of modifying the program interfaces by deleting and adding and showing the required items (users' permissions) according to each hospital's dealing with the items to

facilitate use. Providing various reports with the ability to print and modify them. And many other features that provide flexibility and facilitation in the hospital management process.

Role of Telehealth

Requests medical services, analyzes and x-rays for the patient, whether he is an inpatient or an outpatient, and requests medication and view the patient's medical prescription. It also views the services requested by doctors, especially emergency services and views the patient's health record. It gives the authority to enter the patient's vital data and the ability to modify it and you can add more powers or stop some nursing powers.

Reception program and includes opening a new electronic file for a patient, automatic translation of patients' names into English and searching for a patient file by name, part of the name, ID number, mobile number, file number. Electronic archiving of the patient's documents and attaching them to his electronic file via the electronic scanner or attaching a file and printing a patient identification card. In addition, communicating with the patients via mobile messages, archiving the patient's electronic file with all his visits, patient history and the possibility of exporting it, editing a note for a specific patient who appears when entering his file and issuing a sick leave report and a medical report and an external transfer.

ETOP/ SWOT/ TOWS

The best strategy is to transform threats to opportunities and weakness to strength through brainstorming with others, searching the net for information, defining the customer, studying the market and defining competitor.

In the future an assortment of Telehealth apparatuses is accessible to assist you with dealing with your medical care and get the administrations you really want. Telehealth is the utilization of advanced data and correspondence innovations, like PCs and cell phones, to get to medical care benefits from a distance and deal with your medical care. These might be innovations you use from home or that your PCP uses to improve or uphold medical care administrations.

Reasons for demanding telehealth service

Telehealth, the arrangement of care ways off, is a vital part in future incorporated care. Today's isolated Telehealth applications actually require connection into more far-reaching e-Wellbeing procedures, in which clinical pathways and administration conveyance processes are completely planned and patient information securely shared.

Clients will request our service in the future to diminish the cost of transportation and cutoff time. An inexorably strong proof base is arising demonstrating that Telehealth can be

utilized successfully to answer the developing call for further development care, specifically for those with chronic conditions. Mainstreaming stays a test; market influences alone are probably going to stay lack.

Clients can pay for services by different ways as credit or in combination with insurance health services. The utilization of telehealth, as a device to assist with support better coordinated care, might benefit from some intervention through drives that unite strategy obligations. This could incorporate setting up monetary and hierarchical vehicles (joint financial plans, joint dares) to help the association across areas. Clients will rely upon these services to give consuming time, endeavors and cash.

Extensively, Telehealth advancements can be conveyed for designated purposes far-off evaluation of patients could be embraced, bypassing visits to outpatient clinics or primary care providers. Consistently, new applications show up in health care and updates of current notwithstanding revelations and developments new applications in medical care and updates of current applications.

To achieve change, components ought to be set up to encourage exchange, in this way ingraining a feeling of organization in the change and diminishing resistance to change. Process development driven by clear wellbeing strategy needs ought to go before Telehealth plan - innovation all alone can't be anticipated to convey. Change the executives should completely connect every member. Full attention to moral issues ought to be required and the convenience and interoperability of today's ICT frameworks can, and ought to be, significantly better.

The produced service

HR – Job descriptions, Job specifications & Estimating Salaries

HR experts are responsible for enrolling, screening, meeting and placing workers. They may likewise deal with representative relations, finance, advantages, and preparing. They direct experts in their obligations; talk with chiefs on essential preparation, and connection a company's administration with its workers. The Building and the Materials - Assessing Cost, Upkeep of the Building there no adjustment of hospital, however the telehealth care unit need to shut room include PCs, web, screener gadgets, and medical care trains.

The Machines – Estimating Cost and Maintenance

All-in-one telemedicine systems that comprise telemedicine software, primary care medical devices and the mobile cart/case can range from 20,000\$ to 28,000\$. The telemedicine app development cost ranged from \$75,000 to \$250,000. The fee depends on factors such as e type of application, its difficulty, the kind of team, its procedural level, and

site. The accessible evidence has designated that although telehealth provides overwhelmingly helpful patient benefits and increases productivity for several services, current evidence suggests that it does not routinely decrease the fee of care delivery for the health system

The technical infrastructure requirements of Telehealth

Telemedicine device organizations offer a scope of clinical extension that has coordinated clear line of sight and sound recording devices. A few extensions permit the supplier to catch pictures of the test and afterward share with different gadgets by using a USB port. Advanced stethoscopes allow doctors to record and share a patient's lung and heart sounds.

Telemedicine trucks ordinarily come outfitted with PCs, screens, consoles, cameras, and portable clinical gadgets, as advanced extensions and wearable screens. Clinics are additionally progressively using innovation like intuitive patient commitment frameworks to work on quiet instruction and smooth out work processes.

Methods of Estimating the Cost of Training

Educating all staff individuals, no matter what their job. There is much more to virtual consideration than signing into a videoconferencing stage. We offer easy contact with IT support throughout the care journey. Educate Providers (and Patients) on Safety Best Practices. All staff who assume Telehealth monitoring must have joined the approved training provided by the County Council Telehealth Team and be deemed competent by a recorded clinician with the essential experience and capability to make this choice.

The worldwide Telehealth market is primarily driven by the rising adoption of smart and progressive technologies in the healthcare sector. The increased demand for the digital technologies next COVID-19 pandemic has spread the awareness regarding the importance of developing and approving digital health services across the world.

Telehealth technology utilize equipment to screen patients' health status through their clinical indicators in their own homebased. 1.2 Equipment installed in a patient's home can be used to monitor vital signs such as Blood Pressure, Glucose, Oxygen (SpO₂), Peak Flow and Weight.

Telehealth methods

Today, telehealth encompasses four distinct applications. These are commonly known as live video, store-and-forward, remote patient monitoring, and mobile health. They explore each modality in detail to learn more. The Four Types of Telehealth are live video-conferencing, asynchronous video (AKA Store-and-Forward), remote patient monitoring (RPM) and mobile health (mHealth).

Patient Circulation

Telehealth provides patients with better access to health care by improving convenience and continuity. It also makes specialty care more widely available and removes barriers to access. Telemedicine allows patients to communicate with a healthcare provider using technology, as opposed to physically visiting a doctor's office or hospital. With telemedicine, you can discuss symptoms, medical issues, and more with a healthcare provider in real time using video, online portals, and email.

Health Care Training

Physicians, Certified Nurse-Midwives (CNMs), Nurse Practitioners (NPs), Physician Assistants (PAs), Clinical Psychologists (CPs), Clinical Social Workers (CSWs), Clinical Nurse Specialists (CNSs) and Certified Registered Nurse Anesthetists (CRNAs) CPs and CSWs can't bill Medicare for psychiatric diagnostic interview examinations with medical services or medical evaluation and management services. They can't bill or get paid for CPT codes 90792, 90833, 90836, and 90838. Registered dietitians or nutrition professionals.

Physicians, on average, consumed 13.8 min in a simulated visit compared to 10.2 minutes when the visit was in person. A physician-led in-person visit fee the health system on average \$26.84. When the visit was virtual, it cost \$27.26.

As hospital systems are worried by the surge patients, methods to improve the competence of emergency departments (EDs) are required, while maintaining values of patient care. Telemedicine supplies a potential avenue for the triage of critical patients. **Waiting Time to have the service**

At minutes, telehealth can help decrease travel and wait times for patients. In place of driving across town and waiting for care, patients can use live video and audio to remotely access their care provider. Patients essential to feel they can access healthcare services without taking too much time out of their day.

Steps to implement a telemedicine program

1. Create an approach and set goals.
2. Gather a cross-functional team.
3. Check important rules, procedures, and reimbursement.
4. Design an approach to make the best use of the program's uptake.
5. Completely join in and implement technology.
6. Encourage reactions from patients and staff.

The supply chain design and management



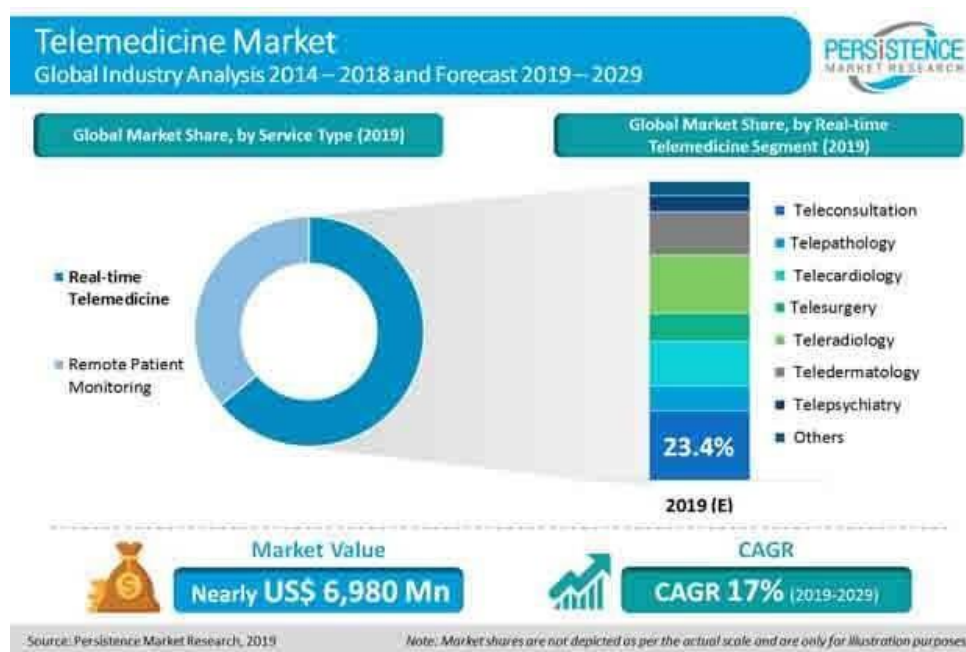
The Marketing and Sales Planes

The Telehealth customer

Medical Personnel and patients (chronic diseases, old age, live in rural or remote from services). Radiologists, Healthcare team, any person needs consultation. More than 60% of its users are women, and more than 50.0 % are between ages 25 to 44 years. It's now clear that tele pediatrics will be one of the main drivers for the telemedicine market. Another major board will certainly be elderly patients.

Telehealth Market Segmentation

Telemedicine Market Segmented through Real Time Telemedicine, telepathology, Remote Patient Monitoring, teleconsultation, teleophthalmology, telecardiology, telesurgery, teleradiology, teledermatology, telepsychiatry, telenephrology teleneurology, in cloud based and premise-based Mode of Delivery. This market research report includes a detailed segmentation of the worldwide market by modalities, mechanisms, modes of delivery, end-users, and characteristics.



Competition in the Telehealth Market Set to Intensify

Competition based valuing is an evaluating strategy that includes setting your costs corresponding to the costs of your rivals. This is contrasted with different techniques like worth based estimating or cost-in addition to valuing, where not entirely analyzing by breaking down different variables like customer interest or the expense of creation. At present, hospitals link with patients and counseling experts a good ways off by utilizing video and other innovation. Pretty much every state Medicaid program has some type of cover for telehealth services, and private paymasters are embracing cover for some telehealth services.

What does the customer want from the service?

They need you to rapidly answer. They long for a customized insight. They maintain that you should take care of their concerns. They wish you would pay attention to them.

What makes the customer service better?

Offering clients the chance to give tributes and on-line surveys. Expressly asking clients their perspectives after they have utilized your item or administration. For instance, by telephone, face to face or recorded as a hard copy. Giving an extremely short, straightforward input structure or review with a motivator to finish.

Market demand

Market request depicts the interest for a given product and who needs to buy it. Not entirely set in stone by how willing purchasers are to spend a specific cost on a specific decent or administration. As market request increments, so does the cost. At the point when the interest diminishes, costs will go down also.

Pricing the project telehealth service

The cost relies upon a several elements such as the type of application, its intricacy, the sort of team, its specialized level, and area. telemedicine frameworks that incorporate the telemedicine programming, essential consideration clinical devices and the mobile truck/case.

How can you reach the customer?

By the declaration (web-based entertainment, television, radio, paper). The most fundamental to a telemedicine practice is a protected broadband web association. The sum and speed of the web association will decide the video quality and the amount and speed of information transfer.

The cost of marketing and the ads and the social media

The average marketing budget is about 5% of project cost.

The market strategy

Marketing are place, value, product, and advancement. Via cautiously incorporating these advertising systems into a showcasing blend, organizations can guarantee they have a noticeable, sought after item or service that is seriously estimated and elevated to their clients.

The sales strategy

The serves should utilize an intuitive sound and video media communications system that allow to real-time communication between you at the far-off site and the patient at the any site. CMS permits sending clinical data to a doctor or professional by telehealth to evaluated later just in Gold country or Hawaii government telemedicine show programs. A doctor, NP, Dad, or CNS should give no less than 1 ESRD-related active visit (not telehealth) every month to inspect the patient's vascular access site.

The cost of the sales:

It must be suitable to the consumers and give to institution good reward to cover the costs.

Estimating the number of sales:

Submit proficient telehealth service claims utilizing the suitable CPT or HCPCS code. Assuming you performing telehealth services through a nonconcurrent broadcast communications system, increase the telehealth GQ modifier with the expert assistance CPT or HCPCS code (for instance, 99201 GQ). You're ensuring that you gathered and sent the nonconcurrent clinical document at the far-off site from a government telemedicine exhibition project.

Legal and other Obligatory Studies

Legal study

Government health care pays explicit Part B doctor or specialist services gave through a communications system. The telehealth services alternative for an in-person visit.

The political study

The Health Resources and Services Administration (HRSA) conclude HPSAs and the Evaluation Department chooses MSAs. Find potential Federal health care telehealth beginning site installment qualification at HRSA's Government medical care Telehealth Installment Qualification Analyzer

The Environmental Study

Federal health care doesn't matter starting site geographic circumstances to emergency clinic based and CAH based renal dialysis centers, renal dialysis offices, and patient homes when experts give month to month ESRD-related clinical assessments in understanding homes. Free Renal Dialysis Offices aren't qualified beginning destinations.

The social study

Telehealth innovation utilizes equipment to screen patients' wellbeing status through their clinical markers in their own home. It assists patient with diminishing financial expense and endeavors

The catastrophe plan

In all calamities, there is a huge interruption of administrations and by and large critical injury. Association Special Interest Group (SIG) on Crisis Readiness and Reaction additionally fostered a stock of what abilities were accessible. A white paper, ready by Dave

Balch, investigated the SIG\'s endeavors to foster a system and framework that could be utilized at the neighborhood, provincial, and public levels in light of mass setback events.

Telemedicine, throughout recent many years has been utilized successfully and sensibly in the repercussions of catastrophes brought about by the two people and normal happening occasions. Cataclysmic events can't be exactly anticipated concerning where and when they will happen, albeit critical innovation accessible today gives a degree of mindfulness or a caution to forthcoming tornadic action, the damaging way of storms, torrents, and tremor shortcoming zones. This mindfulness does essentially nothing to plan populace focuses other than to get whatever number individuals as would be prudent to a protected area. This mindfulness capacity contrasts altogether across the globe, and frequently parts of the creating scene experience bigger death toll and property therefore. Think about the new seismic tremors in Haiti, Japan, and Chile regarding the obliteration and decimation, and obviously, the requirements of the populace.

The safety, security and fire plans

- 1- The Telehealth stage ought to accommodate a solid verification strategy. Start to finish Encryption.
- 2- the Telehealth stage ought to accommodate start to finish encryption.
- 3-Keep a perfect machine. Third, medical services suppliers and patients ought to keep a spotless machine.
- 4-An incredible method for safeguarding your telemedicine network from the risks of Wi-Fi is by means of a distributed virtual private organization (VPN). VPNs give patients and doctors a safe method for interfacing with their endeavor network from a distance.
- 5-Strategies ought to be created and rigorously implemented to forestall fire risks in tolerant regions where oxygen is utilized. Whenever you enter another workspace, glance around and observe alarms, fire dousers, leave signs and oxygen cut off valves. One method for recalling fire wellbeing is the abbreviation.

The Transportation means for the staff and customers and the cost of transportation of the staff

Telemedicine can bring down medical care costs, drive up proficiency and income, give your patients better admittance to medical care services, and eventually get more joyful, better patients who stay in your association.

Continuous medical and Nursing Education and the cost

A telehealth nurse, health care team ought to have abilities in surveying, utilizing telecom innovation, communicating with other medical care providers, teaching patients and their families, overseeing information, and settling on suitable choices when the patient should be inspected by a medical services provider.

The Telehealth Budgeting the Project

The Capital:

Fixed assets → The land of the hospital and the building, virtual stethoscopes, wireless scales, thermometers, and digital otoscopes.

Telemedicine trucks generally come equipped with PCs, screens, consoles, cameras, and portable clinical devices, as advanced extensions and wearable screens. Hospitals are likewise progressively utilizing innovation like intelligent patient commitment systems to work on understanding instruction and smooth out work processes.

Current resource: it's an incredible method for lessening your medical care costs. Also, in the event that you have medical coverage, telehealth visits might be free. A recent report found that a telehealth visit costs a normal of \$79, contrasted with \$146 for a doctor's visit and \$1,734 for a trauma center visit.

Current asset: Money and the source, stocks, shares, stored material, etc : Federal agencies. This is often one of the largest sources of grant funding. · Local, regional, and national foundations.

Expenses

Salaries → **Fixed Cost/Timed:** It's a great way to reduce your healthcare costs. Plus, if you have health insurance, telehealth visits may be free. A 2017 study found that a telehealth visit costs an average of \$79, compared to \$146 for a doctor's visit and \$1,734 for an emergency room visit.

Rent → **Fixed Cost/Timed**

All the following are current costs → **cost reduction**

Electricity → **Timed:** 1000 pound/month or according to number of machines and hours of work.

Water → **Timed:** 2000 pound/month or according to consuming

Maintenance of building, machines: 3000 pounds / month

Cost of marketing: 1000 pounds / month

Cost of sales: 1000 pounds / month

Bank Installments → **Timed:** no found

Obligations to other, checks, loans, insurance, etc. → **Timed:** no found

Any other expenses: no found

The Expected Revenues

The telehealth market is projected to grow from USD 90.74 billion in 2021 to USD 636.38 billion in 2028 at a CAGR of 32.1% in the forecast period, 2021–2028. The introduction of telehealth has led to the availability of cost-effective treatment, adoption of home healthcare services, and low expenditure on infrastructure development.

Telehealth is revolutionizing the healthcare industry as it minimizes hospital visits, reduces patient wait time and decreases the physical discomfort caused to patients. Further, in the US, the high expenditure on healthcare IT infrastructure by major stakeholders contributes to the market's growth. The telehealth market is observing increased investment for integrating telecommunications with healthcare systems.

COVID-19 further enhanced the adoption of telemedicine among physicians in the US. Every state Medicaid has some form of coverage to virtual care services and private payers. Many hospitals started to provide services through platforms, which increase their adoption among healthcare providers. Hospitals have started to adopt various new platforms to increase better access to end-users. Hence, the usage of information and communication technologies (ICT) has the capability to address critical challenges faced by the US in providing accessible, cost-effective, and high-quality healthcare services to patients.

The Expected Profits

Telemedicine, also known as telehealth, offers many advantages, including comfort and sustainability, control with communicable diseases, better assessment, family link, and primary care and chronic diseases management.



Methods to cover the negative cash flow balance

- 1- Reorganizing obligations
- 2- From previous positive cash flow months
- 3- Short term loans
- 4- Negotiations to postpone obligations

Net Profit distribution

- Reserve
- Investment
- Distribution → Owner, Shares, workers

The Feasibility of the project

The Capital	1st Y	2nd Y	3rd Y	Sum
The Profits	1st Y	2nd Y	3rd Y	Sum

Risk Management

- 1- Pessimistic assessment → Reduce profits by 20%
- 2- Increase inflation assessment by 50%
- 3- Multiple investment projects
- 4- Long-term contracts of buying of some resources
- 5- - Long-term contracts to sell services to B2B
- 6- Crises and Catastrophe management.

Crisis and Catastrophe Predictions

- 1- Predict Crises
- 2- Predict Catastrophes
- 3- Ready plans to meet each crisis and catastrophe
- 4- The cost of crises and catastrophe management
- 5- Financing Crises and catastrophe management

Development Plan

- 1- For how many years will the project be valid?
- 2- Expansions
- 3- Extensions
- 4- Self-financed or loans
- 5- Upgrading machines
- 6- Updating methods
- 7- Training Staff
- 8- Employing new staff

Reference:

- van der Hoek L, Pyrc K, Jebbink MF, Vermeulen-Oost W, Berkhout RJ, Wolthers KC, et al. Identification of a new human coronavirus. *Nat Med* 2004;10(4):368–373. <https://doi.org/https://doi.org/10.1038/nm1024>.
- Lipsitch M, Swerdlow DL, Finelli L. Defining the epidemiology of COVID-19—studies needed. *N Engl J Med* 2020. <https://doi.org/https://doi.org/10.1056/NEJMp2002125>.
- Huang C, Wang Y, Li X, Ren L, Zhao J, Hu Y et al. Clinical features of patients infected with 2019 novel coronavirus in Wuhan, China *The Lancet* 2020; 395(10223):497–506. [https://doi.org/https://doi.org/10.1016/S0140-6736\(20\)30183-5](https://doi.org/https://doi.org/10.1016/S0140-6736(20)30183-5).
- Jiang F, Deng L, Zhang L, Cai Y, Cheung CW, Xia Z. Review of the clinical characteristics of coronavirus disease 2019 (COVID-19). *J Gen Intern Med* 2020:1–5. <https://doi.org/https://doi.org/10.1007/s11606-020-05762-w>.
- WHO Novel coronavirus (2019-nCoV) situation reports. Available from: <https://www.who.int/emergencies/diseases/novel-coronavirus-2019/situation-reports>. [Last accessed on 2020 April 2].
- Smith AC, Thomas E, Snoswell CL, Haydon H, Mehrotra A, Clemensen J, et al. Telehealth for global emergencies: Implications for coronavirus disease 2019 (COVID-19). *J Telemed Telecare*. 2020:1357633X20916567. <https://doi.org/https://doi.org/10.1177/1357633X20916567>.
- Hollander JE, Carr BG. Virtually perfect? Telemedicine for covid-19. *N Engl J Med* 2020. <https://doi.org/https://doi.org/10.1056/NEJMp2003539>.
- Papadimos TJ, Marcolini EG, Hadian M, Hardart GE, Ward N, Levy MM, et al. Ethics of outbreaks position statement. Part 2: family-centered care. *Crit Care Med* 2018;46(11):1856–1860. <https://doi.org/https://doi.org/10.1097/CCM.0000000000003363>.
- Li W, Yang Y, Liu Z-H, Zhao Y-J, Zhang Q, Zhang L, et al. Progression of mental health services during the COVID-19 outbreak in China. *Int J Biol Sci* 2020;16(10):1732–1738. <https://doi.org/https://doi.org/10.7150/ijbs.45120>.
- Kang L, Li Y, Hu S, Chen M, Yang C, Yang BX, et al. The mental health of medical workers in Wuhan, China dealing with the 2019 novel coronavirus. *Lancet Psychiatry* 2020;7(3):e14.