

Effect of Date Palm Pollen on Fertility of Diabetic Male Rats

Nehad R. El-Tahan, Shimaa Mesilhy and
Hanan Y. Abdullah Abdelaziz

Department of Nutrition and Food
Science, Faculty of Home Economics,
Menoufia University, Shebin El-Kom,
Egypt



المجلة العلمية المحكمة لدراسات وبحوث التربية النوعية

المجلد الثالث - العدد الأول - مسلسل العدد (٥) - الجزء الأول، يناير ٢٠١٧

رقم الإيداع بدار الكتب ٢٤٢٧٤ لسنة ٢٠١٦

ISSN-Print: 2356-8690 ISSN-Online: 2356-8690

موقع المجلة عبر بنك المعرفة المصري <https://jsezu.journals.ekb.eg>

JSROSE@foe.zu.edu.eg

البريد الإلكتروني للمجلة E-mail

Effect of Date Palm Pollen on Fertility of Diabetic Male Rats

Nehad R. El-Tahan, Shimaa Mesilhy and Hanan Y. Abdullah
Abdelaziz

Department of Nutrition and Food Science, Faculty of Home Economics,
Menoufia University, Shebin El-Kom, Egypt

Abstract:

The use of date palm pollen as an adjunct form of medical treatment is gaining popularity all over the world. This study was performed to investigate the effects of date palm pollen on diabetic male rat's fertility. A total of twenty four rats divided into four groups were used in this study. Varying doses of the date palm pollen 5, 10 and 20% were used. Parameters used in the methodology were weight of testis, malonildialdehyde concentration, histological study, hormonal assay and sperm analysis. Results of date palm pollen revealed no significant change in weight of testis, inhibition of testicular tissue peroxidation, improve testosterone levels, parameters of sperm analysis such as sperm concentration and motility in comparison to the control group. Obvious cellular changes were also observed in the high level 20% treated groups. The changes observed in groups treated with 10% and 5% were minimal and statistically in significant. The results showed that oral administration of date palm pollen to male rats for 65 days kept the weight of testes and seminal vesicles; improved semen quality and quantity and testosterone levels in the opposite of the results of the level 20% of the pollen. So, this study recommends that intake of 5 and 10% of date palm pollen extracts powder may be beneficial for diabetic male patients who suffer from infertility as these enhance male fertility in rats also more studies on human recommended.

Key words: date pollen- Antioxidant- Histopathology- Malonildialdehyde.

Introduction:

Fertility is one of the major health problems in life, and approximately 30% of these problems are due to male factors (*Isidori et*

al., 2006). Several factors can interfere with the process of spermatogenesis and reduce sperm quality and quantity. Some diseases and conditions such as coronary heart diseases; diabetes mellitus; chronic liver diseases; chronic smoking; insecticide contaminants; air pollutants and insufficient vitamins intake have been reported to cause deleterious effects on spermatogenesis (**Mosher and Pratt, 1991**). On the other hand, previous study reported that intake of antioxidants and vitamins A, B, C and E can increase stability of testicular blood barrier and protect sperm DNA from oxidative stress caused by active free radicals (**Jedlinska et al., 2006**).

Diabetes mellitus, primary or idiopathic, is a chronic disorder of the carbohydrate, lipid and protein metabolism, characterized by insulin disorders, hyperglycemia and glycosuria. This condition may contribute to arteriosclerosis, microangiopathy, nephropathy and neuropathy (**Camilleri, 2007**).

Diabetes mellitus has been associated to sexual dysfunction, both in men and women. It is believed that neuropathy, vascular insufficiency and psychological problems may be involved in the pathogenesis of some phenomena, such as impotence, ejaculation disorders and decreased libido, in addition to the reduced vaginal lubrication and orgasm dysfunctions (**De Berardis et al., 2007**).

Traditional plants are used as source of treatment of diseases in different parts of the world. The use of plant extract as adjunct form of medical treatment is presently enjoying great popularity. The use of date pollen to treat disease is almost universal among non-industrialized societies (**Dasilva et al., 2002**). A number of traditions came to dominate the practice of plant medicine at the end of the twentieth century. Many of the pharmaceuticals currently available to physicians have a long history of use as plant remedies, including opium, aspirin, digitalis, and quinine. The (**World Health Organization, 1999**) estimates that 80 percent of the world's population presently uses date palm for some aspect of primary health care (Traditional medicine). Earlier in the 1990's, approximately one-third of people, surveyed in the United States used at least one unconventional therapy during the previous year (**Eisenberg et al., 1993**). Traditional healers are still consulted in Nigeria

as a first choice probably due to the fact that traditional medicine blends readily into the socio-cultural life of the people. **Adomi (2006)** showed that date palm pollen remedies are fast growing and might take over from over-the-counter (OTC) drugs. Some of these supplements include Aloe Vera products, Chinese balms and other herbal concoctions that are preferred by the Yoruba speaking people of Nigeria as first choice.

Numerous plants have been used historically to increase fertility and modern scientific research has confirmed fertility effects in at least some of the date palm pollen tested (**Koneri et al., 2006**).

Effect of date palm pollen on sperm parameters and reproductive system of adult male rats was studied and the results indicated that the consumption of Phoenix dactylifera pollen suspensions improved the sperm count, motility, morphology and DNA quality with a concomitant increase in the weights of testis and epididymis (**Bahmanpour et al., 2006**). Date extract caused a significant increase in sperm cell concentration (total count) and motility in male guinea pigs and adult male rats (**Hassan et al., 2012**). Also, investigators showed statistically significant increase in serum testosterone levels in rats they received DPP (**Iftikhar et al., 2011**). Date extracts have been shown to increase in sperm concentration and motility with a increased normal morphology and a significant increase in testosterone level in rats (**Adaay and Mattar, 2012**). They revealed that the aqueous extract of Phoenix dactylifera pollen can be used as a sex enhancer and seems to cure male infertility in rats. Also, their findings support the traditional use of this plant for the treatment of pre-ejaculation and impotency (**Abedi et al., 2012**). Two studies have shown protective effect on cisplatin and cadmium induced male infertility in rats (**Hassan et al., 2012**).

There are a few studies for effect of DPP on male fertility in human. (**Saad et al., 2012**) showed that adding the 20% Phoenix dactylifera pollen extract to the culture medium of the in vitro sperm activation leads to an improvement in the sperm motility. In another studies, a combined therapy includes DPP and zinc sulfate capsules (Al-Sanafi et al., 2006) and DPP capsule alone (Marbeen et al., 2005) used for treatment of 25 infertile men. The treatment was significantly increased serum LH, FSH and testosterone levels. It was also, increased significantly sperm count and motility. Sexual desire was also significantly increased. So, the

present study was designed to investigate the effects of date palm pollen on diabetic male fertility.

Materials and Methods:

Materials:

This study was carried out using date pollen as powder which obtained from Ministry of Climate Change and Environment (MOCCA).UAE.

Thirty (30) mature male albino rats each weighing 150 ± 5 gm were and 14-16 weeks old of Sprague Dawley strain. Rats were obtained from the Laboratory Animal Colony, Helwan, Egypt.

The basal diet consisted of casein as a source of protein, corn oil as a source of fat, choline chloride, vitamin mixture, cellulose as a source of fiber, salt mixture and corn starch were obtained from El-Gomhoria Co., Dokki, Giza. Basal diet was prepared according to (AIN, 1993). It was consisted of 14% casein, 10% sucrose, 10% corn oil, 0.2% choline chloride, 1% vitamin mixture (Campbell, 1963), 4 % salt mixture (Hegsted *et al.*, 1941) and 5% fibers (cellulose). The remainder was corn starch.

Alloxan:

Was purchased from El-Gomhoryia Company for Chemicals; Cairo, Egypt.

Glucose enzymatic kits of BioMerieux were purchase from Alkan Company, Dokki, Egypt for determination of serum glucose. Radioimmunoassay kits were obtained from Gamma Trade Company, Egypt for estimating of the Malondialdehyde (MDA) level and testosterone hormones in treated rats.

Methods:

Experiment and Grouping of rats:

The rats will divide into 5 groups (6 animals) of each one. The 1st group fed on the basal diet and served as normal control, while the other five groups were given alloxan by intraperitoneal injection of a single daily dose of 120 mg/Kg. for 3 days to induce moderate stable diabetes as described by Ashok et al. (2007). The 2nd group of rats was left as

diabetic control. Diabetic rats of the 3rd,4th and 5th groups were given date palm pollen at the levels 5, 10 and 20% respectively, for 65 days to cover the period of spermatogenesis in the rat. Doses have been used by researchers to achieve fertility effects (Rao, 1987 and Sinha, 1990).

Retrieval of tissue:

At the end of experiment, rats were anaesthetized with ketamin 1mg/kg [intramuscularly (i.m.)], the chest was opened and blood samples collected by heart puncture. Serum samples were directly frozen at -10°C till biochemical analyses. Testicular pieces were collected in Bouin's fluid for histology and rapidly frozen for malonildialdehyde (MDA) estimation.

Organ weights:

The testes, seminal vesicle and prostate gland of rats were dissected out and weighed. The testes were preserved in 10% neutral formalin solution till processed for histopathological examination.

Quantitative:

Semen analysis:

Epididymal contents of the treated rats were obtained after cutting the tail of epididymis, squeezing it gently on clean slide and the sperm progressive motility and cell count were determined according to the method described by **Bearden and Fluquary (1980)**. Microscopic examinations of the seminal smears stained with Eosin Nigrosin stain were carried out to determine the percentages of sperm viability (ratio of alive/ dead) and sperm cell abnormality according to **Amman (1982)**.

Sperm Concentration Measurements:

Haemocytometer chambers were prepared for counting according to the **WHO (1999)** criteria of semen analysis. Spermatozoa are viewed and counted under a light microscope, the haemocytometer is divided into nine fields, but spermatozoa are counted and recorded for just five random fields and the value is recorded in (106) millions (**Tomlinson et al., 2001**).

Sperm Motility:

Sperm motility was assessed using the **WHO (1999)** classification system, with only the three grades (a, b and c) reported; rapid forward

progression, medium forward progression and slow forward progression. Each sample was assessed twice. For consistency, all readings were carried out at 37°C (WHO, 1999).

Hormonal assay:

Testosterone assay procedure was carried out using immunometric direct human serum testosterone enzyme based immunoassay (EIA) the assay was carried out in five steps as previously described by **Wilke and Utley (1987)**.

Determination of Malondialdehyde Concentration:

Malondialdehyde (MDA) level was determined in the supernatant of the testicular homogenates by the modified method of **Buege and Aust (1978)**. The concentration was calculated using the molar absorptivity of malondialdehyde which is 1.56×100000 M. Percentage oxidation was calculated by: $1 - \text{means value of treated group} / \text{mean value of control} \times$.

Histopathological examination:

Testes of rats were taken and fixed in 10% neutral formalin solution. The fixed specimens were then trimmed, washed and dehydrated in ascending grades of alcohol. These specimens were cleared in xylene, embedded in paraffin, sectioned at 4-6 microns thickness and stained with Hematoxylen and Eosin (H and E) then examined microscopically according to the method described by **Luna (1968)**.

Statistical Analysis:

Data were expressed as means \pm S.E. and statistical analysis was carried using computerized SPSS program. Significance was performed using the least significant difference and paired Student "t" test according to **Snedecor and Cochran (1986)**.

Results and Discussion :

1. Effect of administration of the date palm pollen for 65 days on the absolute weight of sexual organs of normal and diabetic male rats (n= 6 animals):

Administration of date palm pollen at 5, 10 and 20% to adult rats for 65 days significantly increased the weight of testes and seminal vesicle and did not affect the weight of prostate glands as compared to the

control group. The positive control group when given the basal diet without any additive and for the same period significantly decreased the weight of the above mentioned sexual organs as shown in Table (1).

Table (1): Effect of administration of the date palm pollen for 65 days on the absolute weight of sexual organs of normal and diabetic male rats (n= 6 animals).

Groups and Treatment	Sexual organs weight (g)		
	Mean ± SE		
	Testes	Seminal vesicles	Prostate glands
<i>Negative control</i> group (G1)	2.56 ± 0.63	1.65 ± 0.22	0.62 ± 0.01
Positive control group (G2)	1.89 ± 0.04	0.87 ± 0.15	0.52 ± 0.04 ^a
Diabetic rats treated with 5% DPP for 65 days (G3)	2.58 ± 0.12 ^b	1.69 ± 0.24 ^b	0.63 ± 0.01
Diabetic rats treated with 10% DPP for 65 days (G4)	2.61 ± 0.63 ^b	1.73 ± 0.16 ^a	0.63 ± 0.03
Diabetic rats treated with 20% DPP for 65 days (G5)	2.69 ± 0.28 ^a	1.85 ± 0.18 ^a	0.64 ± 0.12

The treated groups were compared to control group using Student't' test.

^a Significant at P < 0. 05 ^b Significant at P < 0. 01.

2. Effect of administration of the date palm pollen for 65 days on parameters of sperm analysis of normal and diabetic male rats (n= 6 animals):

Result in diabetic group as positive control showed a significant reduction in both sperm concentration and motility. While, administration of different levels of DPP prevented a reduction in the sperm analysis parameters to a reasonable degree. These parameters were improved by adding the high levels of DPP when compared with normal group as seen (Table 2).

Table (2): Effect of administration of the date palm pollen for 65 days on parameters of sperm analysis of normal and diabetic male rats (n= 6 animals).

Groups and Treatment	AVE. sperm concentration ×106	Motility (%)	Abnormality (%)	Description value of sperm
<i>Negative control group (G1)</i>	147.34±0.1	91.00±2.11	3.57 ± 0.08	EXCELLENT
Positive control group (G2)	101.24 ±0.28 ^c	50.00 ±1.03 ^c	9.67±0.18 ^c	FAIR
Diabetic rats treated with 5% DPP for 65 days (G3).	150.28 ±0.24 ^c	92.00 ±1.83 ^c	3.25±0.88 ^c	EXCELLENT
Diabetic rats treated with 10% DPP for 65 days (G4).	168.76 ±0.18 ^c	94.00 ±2.76 ^c	2.33 ±0.08 ^c	EXCELLENT
Diabetic rats treated with 20% DPP for 65 days (G5).	179.92 ±0.19 ^c	98.0 ±5.22 ^c	1.76 ±0.08 ^c	EXCELLENT

The treated groups were compared to the control group using Student's t test

^c Significant at P < 0.001

3. Effect of administration of the date palm pollen for 65 days on testosterone concentrations of normal and diabetic male rats (n= 6 animals):

Plasma testosterone concentrations were significantly increased in treated groups compared to the positive control group (p < 0.05). The changes were more prominent in group 4 and 5, which received DPP at the levels 15 and 20% as shown table (3). The study also revealed a marked decreased of plasma testosterone levels after 65 days in case of positive control group when compared with normal control group.

Malondialdehyde (MDA) concentrations were nearly stable in case DPP treated groups. Diabetic group which was fed on basal diet as positive control group had high level of MDA in comparison to the DPP treated and the negative control group. This proved that the rate of

oxidation is significantly lower in the treated groups (3, 4 and 5) in comparison to the diabetic untreated group (2).

Table (3): Effect of administration of the date palm pollen for 65 days on serum testosterone and testicular tissue malonildialdehyde concentrations of normal and diabetic male rats (n = 6 animals).

Groups and Treatment	Testosterone concentration (nmol ml ⁻¹)	Malonildeldehyde concentration (umol mg ⁻¹)
<i>Negative control</i> group (G1)	4.40±0.18	0.53±0.013
Positive control group (G2)	1.15±0.07 ^a	0.75±0.21 ^a
Diabetic rats treated with 5% DPP for 65 days (G3).	4.45±0.36	0.53±0.16
Diabetic rats treated with 10% DPP for 65 days (G4).	6.62±0.44 ^a	0.53±0.16
Diabetic rats treated with 20% DPP for 65 days (G5).	7.15±0.23 ^a	0.52±0.02

^a Significant difference (p<0.05)

Histopathological Examinations:

Control group tests (Photo 1) showed that normal histological structure of active mature functioning seminiferous tubules associated with complete spermatogenic series. The histological study in the liquorice roots treated (Group 1) showed normal chromatin clumping, nuclear vacuolation, cytoplasmic macrovesicles and isolated small collection of apoptotic cells. In group (2), there are more germ cells in some of the seminiferous tubules of this group. The interstitium is narrowed and infiltrated with inflammatory cells. Also nuclear changes and swelling that was observed in this group. The interstitial spaces were seen to be widened. However, shows a lot of inflammatory cells infiltration, interstitium is not very remarkable. Also, degeneration of most seminiferous tubules with absence of spermatogenic series in tubular lumen was observed.

There was no significant inflammatory cell infiltration and the interstitium not remarkable (Photo 3). Groups 4 and 5 which were treated

with DPP at the levels 10 and 20% revealed normal histological structure of most seminiferous tubules with normal spermatogenic series, the nuclear changes and swelling are absent in the slides of these groups, (Photos 4 and 5). So also cell death is significantly not present and the interstitial spaces were seen to be widened.

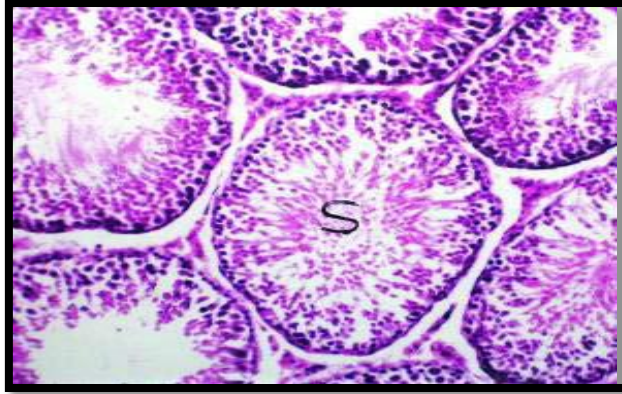


Photo (1): A photomicrograph of rat's tests from negative control group (Mag.x 100).



Photo (2): A photomicrograph of rat's tests from group 2 (Mag.x 40).

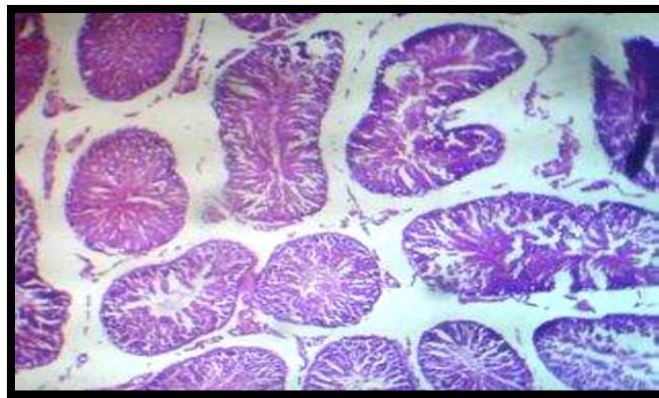


Photo (3): A photomicrograph of rat's tests from group 3 (Mag x 100).

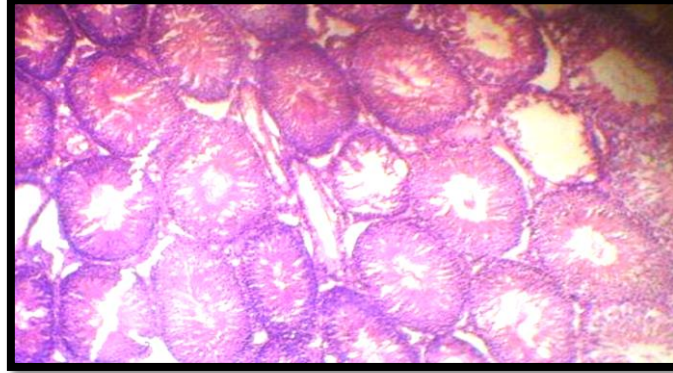


Photo (4): A photomicrograph of rat's tests from group 4 (Mag.x 100).



Photo (5): A photomicrograph from rat's tests in group 5 (Mag.X 100).

Discussion:

Researchers have expressed their concerns about the rising cases of male spermatozoa abnormalities (**Kuku and Osegbe, 1989**). Sperm factor constitutes about forty percent (40%) of infertility and this is due to abnormalities of the male reproductive system (**Ashiru et al., 1993**). Infertility among couples in African societies especially Nigeria, is causing increasing concern (**Uriah et al., 2001**). The infertility in Africa at large could be due to the fact that traditional healers are still consulted as a first choice because traditional medicine blends easily into the socio-cultural and economic life of the people (**Kela and Kufeji, 1995**).

Defective sperm function in cases of male infertility is being caused majorly by free radical activities (**Sharma and Agarwal, 1996**). There is growing evidence that spermatozoa are protected from the detrimental Reactive Oxygen Species (ROS) effect by the powerful antioxidants in seminal plasma since disturbances of sperm functions by ROS has been demonstrated in the absence of seminal plasma (**Raji et al., 2007**). In light of the above, it is not surprising that testes of rats administered with liquorice showed significant evidence of inhibition of lipid peroxidation. Liquorice roots are a known powerful antioxidant with the ability to scavenge Reactive Oxygen Species (ROS). It also prevents the oxidation of essential cellular components because it is an excellent vitamin fat soluble source as vitamin E, chain breaking antioxidant (**Raji et al., 2007**).

The obtained results showed that DPP administration at 10 and 20% for 56 days to male rats caused increases in the weight of testes and seminal vesicle and prostate glands when compared to control group. Whereas, diabetic rats as positive control group which fed on basal diet led to decrease the weight of the above organs. So, the preventive functions of DPP on testicular tissue oxidation and function were improved. These findings agree with those reported by **Polentseva et al. (2009)** who concluded that liquorice roots may be promising in enhancing sperm healthy parameters. Also, our study supports that of **Adedapo et al. (2007)** who found that high blood sugar caused testicular degeneration, lowered semen quality and quantity. With regard to DPP, the present data revealed that its oral administration at the large dose (20%) increased sperm motility and quantity as well as alleviation of testicular degenerative changes that seen in the testis of rats which administrated DPP at the same level. These findings are partially similar to those reported by **Verma and Kanwar (1999)** who concluded that the use of DPP in vitro has been also documented to improve sperm motility and viability. Also, **Hughes et al. (1998)** results are in consonance with our findings which show is a protective effect in all the parameters used. This due to DPP contained vitamins C, E, and urate separately has protective effects on sperm DNA integrity on irradiation.

The study also revealed a marked decreased of plasma testosterone levels after 56 days in case of positive control group while, plasma

testosterone levels in case of using treatment with DPP especially at high doses 20% led to increase plasma testosterone levels. For, Malonildiadehide (MDA) concentrations of rats administrated with DPP were decreased with increasing the level of DPP whereas the rats as a positive control group, the Malonildiadehide (MDA) concentrations increased and due to reduce volume of contents in the testes and reduced testosterone producing leydic interstitial cells level seen in the treated groups as clearly shown in the histological study, which indicates that this extract suppresses leydic cell steroidogenesis and this tallies with work done by **Amr (2008)**. The effect of DPP on sperm function may therefore be caused by an increase in the lipid peroxidation as DPP leads to a significant decrease in the MDA levels, increased spermatogenesis and the near normal level of the histological studies. The antifertility potentials of high blood sugar due to its oxidative properties might be due to presence of some known constituents such as Abrin (**Bhaskar et al., 2008**) and lectin (**Myung-Sunny Kim et al., 2003**).

Earlier study carried by **Sinha (1990)** revealed a normal histological appearance with DPP which matched with our histological findings in this study and this might be due to the higher dose used in this study.

Conclusion:

The results of this study indicated that high blood sugar caused a harmful effect on the fertility potentials in male rats due to probably an imbalance between levels of Reactive Oxygen Species (ROS) production and the natural antioxidant defense system. While, the administration of DPP at the same levels 10 and 20% can be used to protect spermatozoa against the free radical-induced injury such as diet which forms an important component of the antioxidant protection system; it supplies the major antioxidants sources such vitamin C, vitamin E, and carotenoids and for those patients who are suspected to have high levels of ROS, DPP at the level 20% supplement can be considered.

References:

1. **Adedapo, A.A.; Omoloye, O.A. and Ohore, O.G. (2007):** Studies on the toxicity of an aqueous extract of the leaves of *Abrus precatorius* in rats. Onderstepoort J. Vet. Res., 74:31-6.
2. **Adomi, O.P. (2006):** Antibacterial activity of aqueous and ethanol extract of the stem of *Alstonia boonei* and *date palm pollen* Scientific Research and Essay, 1: 050-053:
3. **Amann, R. P. (1982):** Use of animal models for detecting specific alteration in reproduction. Fund. Appl. Toxicol., 2: 13-36.
4. **AIN (1993):** American Institute of Nutrition Purified Diet for Laboratory Rodent, Final Report. J. Nutrition, 123: 1939 – 1951 and O. Compactum Benth, J. Essential Oil Res., 8 (6): 657 – 664.
5. **Amr, A. (2008):** Ketoconazole-induced testicular damage in rats reduced by *Gentiana* and date palm pollen extracts. Experimental and Toxicologic Pathology, 59: 377-384.
6. **Anam, E.M. (2001):** Anti-inflammatory activity of compounds isolated from aerial parts of *Abrus precatorius* (Fabaceae). J. Phytomedicine, 8: 24-27.
7. **Ashiru, O.A.; Akinola, L.A.; Okanlawon, A.O. and Adegoke, F. (1993):** Reflection on the state of the art human reproduction. Afri. J. Med. Sci., 22:1-6.
8. **Bearden, H.J. and Fluquary, J. (1980):** In Applied Animal Reproduction, Reston Publishing Co. Inc., Reston, Virginia, USA, Page, 158-160.
9. **Bhaskar, A.S.B.; Utsab, D.; Om, K. and Lakshmana, P.V. (2008):** Abrin induced oxidative stress mediated DNA damage in human leukemic cells and its reversal by *N*-acetylcysteine Toxicology *In vitro*, 22: 1902-1908.
10. **Buege, J.A. and Aust, A.D. (1978):** Lipid peroxidation methods. Enzymology, 11: 302-310.
11. **Campbell, J.A. (1963):** Methodology of Protein Evaluation RAG Nutr., Document R. 101 Ed., 37. June Meeting New York.

12. **Dasilva, E.J.; Baydon. E. and Badran, A. (2002):** Biotechnology and the developing world. *Electronic Journal of Biotechnology*, 5(1): 231-238.
13. **Dwivedi, R.S. (2004):** Unneutered and untapped super sweet on sacchariferous. *Plant species in India*.
14. **Eisenberge, D.M.; Kesla, R.C.; Joster, C.; Norlock, F.E.; Calkins, D.R.C. and Delbance, T.L. (1993):** Unconvetional Medicine in the United States: Prevalence, costs and Patterns of use. *N. Engl. J. Med.*, 328: 246-252.
15. **Hassan, M.; Navideh, M.; Mazdak, R.; Hadi, C. Arash, A. and Fereshteh, D. (2012):** Protective effects of melatonin and *Glycyrrhiza glabra* extract on ochratoxin A–induced damages on testes in mature rats. *Human and Experimental Toxicology*, 30 (2) 110–123.
16. **Hegsted, D.M.; Miller, R.C.; Elvehjem, C.A. and Hart, E.B. (1941):** Choline in nutrition of chichs. *J. Biol. Chem.*, 138: 459.
17. **Hhabra, S.C.; Mahunnah, R.L. and Mshiu, E.N. (1990):** Plants used in traditional medicine in Eastern Tanzania. *Angio. J. Ethnopharmacol.*, 29: 295-323.
18. **Hughes, C.M.; Lewis, S.E.; McKelvey-Martin, V.E. and Thompson, W. (1998):** The effects of antioxidant supplementation during Percoll preparation on human sperm DNA integrity. *Hum. Reprod.*, 13: 1240 -1247.
19. **Isidori, A.M.; Pozza, C.; Gianfrilli, D. and Isidori, A. (2006):** Medical treatment to improve sperm quality. *J. Reproduc. Biomed.*, 12: 704 -714.
20. **Ivan, A.R. (2003):** Medicinal Plants of the World. Chemical Constituents, Traditional and Modern Medicinal Uses. In: Totowa, N.J. (Ed), Humana.
21. **Jedlinska, M.; Bomba, G.; Jakubowski, K; Rotkiewicz, T.; Jana, B. and Penkowski, A. (2006):** Impact of oxidative stress and supplementation with vitamins E and C sources on testes morphology in rats. *J. Reproduc.*, 52: 203-209.
22. **Kela, S.L. and Kufeji, J.H. (1995):** Screening of some Nigerian plants for bactericidal activity. *J. Microbio.*, 10: 18–22.

23. **Khare, C.P. (2004):** Encyclopedia of Indian Medicinal Plants. Rational Western therapy, Ayurvedic and other traditional usage Botany, Springer, New York.
24. **Koneri, R.; Balaraman, R. and Saraswati, C.D. (2006):** Antiovolatory and abortifacient potentials of the ethanolic extract of roots of *Mamordica Cymbalaria Fenzl* in rats. *India J. Pharmacol.*, 38 (2):111-114.
25. **Kuku, S.F. and Osegbe, N.D. (1989):** Oligo Azoospermia in Nigeria. *Arch. Androl.*, 22:232-233.
26. **Ligha, A. E. and Oyibo, A. C. (2012):** The Effect of Indian Liquorice on Fertility. *Pharm. Chem. J.*, 33:24-31.
27. **Luna, L.G. (1968):** In Manual Histological Staining Methods of the Armed Forces Institute of Pathology, McGraw Hill Book Co., New York, USA, Page 58-62.
28. **McNeil, R.T.; Noronha, C.C.; Kusemiju, J.O. and Okanlawon, A.O. (2003):** The anti-ovulatory effect of a seed extract of *Ricinus communis-Linn.* *Nigerian Journal of Health and Biomedical Sciences*, 2: 31-34.
29. **Mosher, W. D. and Pratt, W.F. (1991):** Fecundity and infertility in the United States: incidence and trends. *J. Fertil. Steril.*, 56: 192-193.
30. **Myung-Sunny Kim, H.; Jienny, L.; Kang-Min, L.; Sei-Hoon, Y.; Sujinna, C.; Sang-Young, C.; Tae-Young, K.; Won-Hun, J. and Raekil, P. (2003):** Involvement of hydrogen peroxide in mistletoe lectin-II-induced apoptosis of myeloleukemic U937 cells. *Life Sciences*, 73: 1231-1243.
31. **Oderinde, O.; Noroha, C.; Oremosu, A.; Kusemiju, T. and Okanlawon, A.A. (2003):** Abortifacient properties of aqueous extract of *Carica papa* and date palm pollen on Female Sprague-Dawley rats. *The Nigerian Postgraduate Medical Journal*, 9: 95-98.
32. **Okoko, I.E.; Ukwanya, V.O.; Oyewo, O.O.; Ashamu, E.A.; Makanjuola, V.; Ashindoitiang, J.A.; Oluyemi, K.A. and Okanlawon, A.A. (2008):** Effects of Methanolic Extract of *Abrus Precatorius Linn* Seeds on Estrous Cycle, Ovulation and Body Weight

- of Adult Cyclic Sprague-Dawley Rats. The Internet Journal of Endocrinology, 4: 3-5.
33. **Olabiya, O.A.; Oremosu, A.A.; Noronha, C.C. and Okanlawon, A.A. (2006):** Effects of cotton seed oil (*Gossypol spp.*) and cotton seed meal on estrous cycle, ovulation and histoarchitecture of female cycle, ovulation and histoarchitecture of female reproductive organs of adult cyclic Sprague-Dawley Rats. Nigerian Journal of Health and Biomedical Sciences, 5: 21-26.
34. **Oluyemi, K.A.; Okwuonu, U.C.; Baxter, D.G. and Oyesola, T.O. (2007):** Toxic Effects of Methanolic Extract of *Aspilia Africana* Leaf on the Estrous Cycle and Uterine Tissues of Wistar Rats. Int. J. Morphol., 25: 609-614.
35. **Polentseva, R.V.; Vinenko, U.I. and Mmosov, P.S. (2009):** Pharmacological and therapeutic properties. Potentials of Male Rat. J. Phys. Pharm. Adv., 2(2): 109-116.
36. **Rajaram, N. and Janardhanam, K. (1992):** The chemical composition and nutritional potential tribal pulse, *Abrus precatorius*. Plant Food Hum. Nutr., 42: 285-290.
37. **Raji, Y.; Olufadekemi, T.; Kunle, A.; Olaleye, S.B.M.A.; Gbasegesin, M.A.; Awobajo, F.O.; Osunuga, O.A.; Odukanmi, A.O.; Salami, S.A. and Adeyombo, B.F. (2007):** Impact of a togoopherol on etronidazole and tetracycline-induced alterations in reproductive activities of male albino rats. Journal of Biological Sciences, 7: 41-46.
38. **Rao, M.V. (1987):** Antifertility effects of alcoholic seed extract of *Abrus precatorius* in male albino rats: Acta.Eur. Fertil., 18: 217-220.
39. **Sharma, R.K. and Agarwal, A. (1996):** Role of reactive oxygen species in male infertility. Urology, 48: 835-850.
40. **Shin, S.; Jang, J.Y.; Choi, B.I.; Baek, I.J.; Yon, J.M.; Hwang, B.Y.; Park, D.; Jeon, J.H.; Nam, S.Y.; Yun, Y.W. and Kim, Y.B. (2008):** Licorice extract seeds impair the male reproductive function of rats. Exp Anim., 57(1):11-7.

41. **Sinha, R. (1990):** Post testicular antifertility effects of *Abrus precatorius* seed extract in albino rats. J. Ethnopharmacol., 28: 173-181
42. **Snedecor, G.W. and Cochran, W.G. (1986):** In Statistical Methods, 7th Edition, Iowa State University Press, Ames, USA, Page, 90-92.
43. **Tamir. S.; Eizenberg, M. and Somjen, D. (2010):** Estrogenlike activity of glabrene and other constituents isolated from licorice root. J Steroid Biochem Mol Biol., 78:291-298.
44. **Tomlinson, M.; Turner, J.; Powell, G. and Sakkas, D. (2001):** One-step disposable chambers for sperm concentration and motility assessment: how do they compare with the World Health Organization's recommended methods? Oxford Journal of human reproduction, 16: 121-124.
45. **Uriah, N.; Ibeh, I and Oluwafemi, F. (2001):** A study on the impact of aflatoxin on human reproduction. Afr. J. Reprod. Health, 5:106-110.
46. **Vaidyarathnam, P.S. and Varier, S. (1995):** Indian Medicinal Plants a compendium of 500 species, Orient Longman Pvt.Ltd., pp: 10-14.
47. **Vaya, J.; Belinky, P.A. and Aviram, M. (2009):** Antioxidant constituents from licorice roots: isolation, structure elucidation and antioxidative capacity toward LDL oxidation. Free Radic Biol Med., 23: 302-313.
48. **Verma, A. and Kanwar, K.C. (1999):** Effect of vitamin E on human sperm motility and lipid peroxidation in vitro. Asian J. Androl., 1: 151-154.
49. **WHO (1999):** World Health Organization Laboratory Manual for the examination of human semen and semen cervical mucus interaction, 4th Edition, Press syndicate of the University of Cambridge, Cambridge.
50. **WHO/UNICEF (1996):** WHO/FRH/MSM/96.11 and UNICEF/ PLN/ 96.1. Geneva, World Health Organization Revised 1990 Estimates of Maternal Mortality: A New Approach by WHO and UNICEF.

51. **Wilke, T.J. and Utley, D.J. (1987):** Total testosterone, free androgenic index and calculated free testosterone by analog RIA method. Clin. Chem., 33: 1372-1375.

تأثير طلع النخل علي خصوبة ذكور الفئران المصابة بداء السكري

نهاد رشاد الطحان - شيماء المصيلحي - حنان يسري عبدالله

قسم التغذية وعلم الأطفمة - كلية الاقتصاد المنزلى - جامعة المنوفية - شبين الكوم

الملخص:

إن استخدام حبوب لقاح النخيل كمعاون فى العلاج الطبي يكتسب شعبية فى جميع أنحاء العالم. وقد أجريت هذه الدراسة لمعرفة تأثير حبوب لقاح النخيل على خصوبة ذكور الفئران المصابة بالسكري. قد تم تقسيم مجموعة الفئران المستخدمة فى البحث (٣٠ فأر) إلى خمس مجموعات كل مجموعة ٦ فئران واستخدمت المجموعة الأولى كمجموعة ضابطة سلبية و المجموعة الثانية كمجموعة ضابطة موجبة وأعطيت المجموعات الثالثة والرابعة و الخامسة مستويات ١٠.٥ و ٢٠% على التوالي من حبوب لقاح النخيل بالنسبة لكل ١٠٠ جم غذاء، واشتملت المعايير المستخدمة فى منهجية البحث ما يلي: وزن الخصية، تركيز المانولدهيد، دراسة نسيجية، الفحص الهرموني وتحليل الحيوانات المنوية، وأظهرت نتائج استخدام لقاح النخيل عدم حدوث أي تغيرات فى وزن الخصيتين، وتثبيط بيروكسيد أنسجة الخصية، وبينما حدث تحسن فى مستويات هرمون التستوستيرون، معالم تحليل الحيوانات المنوية مثل تركيز الحيوانات المنوية وتركيز المانولدهيد والحركة الحيوانات المنوية بالمقارنة مع المجموعة الضابطة. وقد لوحظت تغييرات خلوية فى مجموعة الفئران التى تناولت الحبوب بتركيز ٢٠%. كانت التغيرات غير ملحوظة فى المجموعات المعاملة ب ١٠.٥% حبوب لقاح منخفضة وغير معنوية احصائيا، وأظهرت النتائج أن تناول حبوب اللقاح عن طريق الفم لذكور الفئران لمدة ٦٥ يوما حافظت على وزن الخصيتين والحويصلات المنوية، كما أدت إلى تحسن المنى فى جودته و كمية هرمون التستوستيرون عكس النتائج التى لوحظت عند استخدام حبوب اللقاح بتركيز ٢٠%، لذلك، توصي هذه الدراسة بأن تناول ٥ و ١٠% من مسحوق حبوب اللقاح النخيل قد تكون مفيدة لمرضى السكري الذين يعانون نقص فى الخصوبة.

الكلمات الاسترشادية: حبوب لقاح النخيل - مضادات الأكسدة - التشريح - المانولدهيد.