

## PIEZOELECTRIC REPEATED SCALING EFFECT ON MARGINAL LEAKAGE OF TWO DIFFERENT CEMENTED CERAMIC CROWNS

Magdy Mostafa Khalil Mandour\*<sup>ID</sup>, Mohammed Moustafa Shalaby\*\*<sup>ID</sup>  
and Reem Gamal Hassan\*\*\*<sup>ID</sup>

### ABSTRACT

**Purpose:** The purpose of the present study was to assess the influence of repeated piezoelectric ultrasonic strokes on the marginal leakage of different ceramic cemented crowns.

**Materials and Methods:** Forty human maxillary first premolars received full coverage standardized preparation 1mm above the cemento-enamel junction (CEJ). All teeth were classified into 2 groups (n=20) related to the type of the examined ceramic material; high translucent zirconia (HTZ) and hybrid resin ceramic (HRC). After all the fabricated crowns cementation with self-adhesive resin cement, each group was later partitioned into 4 subgroups (n=5). This was based on the amount of exposed ultrasonic scaler strokes. Microleakage assessment of buccolingual sectioned samples was performed, after their immersion in 2% methylene blue (MB) dye. Stereomicroscope was used for dye penetration measurement.

**Results:** The highest leakage percentage was recorded for HTZ, while the lowest mean value was achieved with HRC. The difference between the two groups was statistically significant ( $P=0.022 < .05$ ) as reported by one-way ANOVA. 7 years of scaler strokes for HTZ showed the highest microleakage mean with statistical significant difference  $p=0.008$  between the subgroups. All the subgroups for HRC showed statistical insignificant difference with  $p=0.728$ .

**Conclusions:** Piezoelectric ultrasonic scaling has minimal effect on microleakage behavior of the ceramic crowns within clinical accepted range. The material type significantly affected the marginal leakage.

**KEY WORDS:** Marginal leakage, Piezoelectric scaling, High translucent zirconia, Hybrid resin ceramic.

\* Masters' Studies, Fixed Prosthodontics Department, Faculty of Dentistry, Minia University, Alexandria, Egypt.

\*\* Associate Professor of Fixed Prosthodontics Fixed Prosthodontics Department, Faculty of Dentistry, Giza, Minia University, Egypt.

\*\*\* Lecturer of Dental Materials, Biodental materials Department, Faculty of Dentistry, Minia University, 6th October, Egypt.

## INTRODUCTION

Oral hygiene maintenance is crucial for overall body health. Periodic elimination of supra and subgingival microbial biofilm is critical for preventing plaque and tartar production, in addition to the control of inflammatory gingival and periodontal disorders. The quality of the patient's oral and prosthetic restorations hygiene has a significant impact on the longevity of any permanent restoration.

Prior to sonic and ultrasonic scalers were developed for plaque management and gross scaling, microbial biofilm was managed with hand tools such as hand scalers. Power-driven ultrasonic scalers transform electric energy into ultrasonic waves via piezoelectricity or magnetostriction. Piezoelectric units are reactivated with vibration that produces tip movement. They oscillate primarily linear in direction, which is parallel to the tooth surface and gently remove biofilm attached to tooth with correct alignment of the tip<sup>(1)</sup>.

Ceramics have been used for esthetic dentistry with a new classification system, which classified all-ceramic materials into; glass-matrix ceramics, polycrystalline ceramics and hybrid ceramics. Zirconia was classified as polycrystalline ceramics with effective rehabilitation choices for indirect anterior and posterior tooth restorations. Because of their superior mechanical qualities and endurance, they are widely used in dentistry. By modifying its microstructure and composition, highly translucent zirconia ceramics have been recently developed. Hybrid dental ceramics are formed of polymer matrices, which aim to combine ceramics and resins. They showed adequate physical and optical properties with acceptable marginal integrity of the restoration<sup>(2)</sup>.

Resin cements are used for luting of all these types of esthetic restorations, as they have high durability and bond strengths to the tooth structure and ceramics. In addition to their high tensile

and compressive strengths and lowest solubility comparable to other available cements<sup>(3)</sup>.

Marginal leakage has implication in variety of conditions that ended to failure of restorations. Microleakage analysis, which employs organic stains such as methylene blue, is one of the most commonly used methods for assessing the sealing performance of restorative materials. The simplicity, the reproducibility and the ability to detect marginal discrepancies are from the technical advantages of this method<sup>(4)</sup>.

Microleakage tests can provide useful information about the prostheses materials efficacy. So this study was conducted with the consequences of piezoelectric ultrasonic scalers periodic use and its influence on the marginal leakage of zirconia and hybrid ceramic crowns cemented with resin cement. The null hypothesis for this research was; piezoelectric ultrasonic scaling will not influence the marginal leakage around cemented ceramic crowns.

## MATERIALS AND METHOD

### Sample size estimation

Sample size was calculated by G-power (software 3.1.9.7 for Windows, Heinrich-Heine, Dusseldorf, Germany) using F test – ANOVA: fixed effects, omnibus and one way. For the two tested groups regarding previous study<sup>(5)</sup>, each subgroup contained at least 4 samples. Extra sample was added to each subgroup for results confirmation. . An alpha level  $\alpha$  was set to 5% with a significance level of 95%, and a beta error  $\beta$  was accepted up to 20% with a power of study of 80%.

### Preparing samples

According to ethical protocol (no. 482/2021) for Faculty of Dentistry, Minia University, a total of 40 human maxillary premolars were freshly extracted for orthodontic purpose, which had been collected

from the out patients' clinic of surgery department, Faculty of dentistry, Minia University. The teeth were selected with approximately the same coronal dimensions for this in vitro study. The premolars were examined to be free of caries, cracks and restorations. Each tooth was subjected to scaling and root planning with an ultrasonic device (Guilin Woodpecker Medical Instrument Co., Guangxi, China) for residual organic tissue removal. The teeth were disinfected and stored in 0.1% thymol solution.

Dental surveyor (Marathon-103 surveyor, Microtech co., Saeyang, Korea) was used for centralizing the premolars vertically up to 3mm above CEJ in clear epoxy resin blocks (Kemapoxy, Chemicals for Modern Building International, Giza, Egypt) in a multi-hole Teflon mold. Ensuring standard preparation evaluation, addition silicone index was made (Hydrorise, Zhermack, Italy) and sectioned buccolingual. Also pre-operative scanning was done by intra oral scanner (MEDIT I500, Seoul, Korea) for standardization confirmation. Reduction with low speed handpiece (NSK, Japan)

was attached to the dental surveyor. Premolars were prepared with a standard method to receive full veneer crowns (Figure 1), with total convergence angle 12 degrees. The occlusal reductions for functioning cusp and non-functioning cusp were 1.5mm, 1mm respectively. The axial reduction and heavy chamfer finish-line were 1.5mm, 1mm respectively. The finish line position was 1mm above cemento-enamel junction.

### Crowns Fabrication

Both zirconia and hybrid resin crowns were designed to be fully anatomic with Exocad DentalCAD (Plovidiv 2.4, Exocad GmbH, Germany). The tested materials composition and their producers are described in Table (1). All ceramic crowns were designed using the same set of criteria, with 0µm space from the start point at the edge of finish line margin up to 1mm axially. The preoperative scans were duplicated to ensure that each produced premolar had the same morphological characteristics. The cement gap was 50µm. 5-Axis dental milling machine (DWX-52D, Roland DGA

TABLE (1): Tested materials composition and their producers

Material name	Composition	Description	Producer
<b>High translucent zirconia Zyttria Z402</b>	Zirconium oxide and Hafnium oxide >94.2% Yttrium oxide >5.7%, Silicon oxide < 0.01% Aluminum oxide 0.09 : 0,15%	Yttrium stabilized zirconia extra-translucent plus white Disc	<i>CO.N.CE.P.T. (Compagnia nuove ceramiche per la tecnica), Musini, Busseto (Pr), Italy</i>
<b>Hybrid resin ceramic Vita Enamic</b>	Silicon dioxide 58 – 63% Aluminum oxide 20 – 23%, Calcium oxide < 1% Sodium oxide 9 – 11%, Potassium oxide 4 – 6% Boron trioxide 0,5 – 2%, Zirconia < 1%	Structure-sintered ceramic matrix, the pores of which are filled with a polymer material Blocks	<i>VITA Zahnfabrik H. Rauter GmbH &amp; Co.KG, Bad Säckingen, Germany</i>
<b>Self-Adhesive Resin Cement Theracem</b>	Calcium Base Filler 20 – 50% Glass Filler 30 – 50%, Dimethacrylates 20 – 50% 10- methacryloyloxydecyl dihydrogen phosphate (MDP) Ytterbium Fluoride 5 – 15%, Amorphous Silica 1 – 5%, Initiator 1 – 10%	Dual - cure auto-mixed cartilages with continuous calcium/ fluoride ion release	<i>BISCO, Schaumburg, U.S.A.</i>

Corporation, Japan) was used for ceramic crowns milling. Zirconia crowns were sintered for 12 hours at temperatures ranging from 900° to 1200°.

### Crowns cementation

Zirconia crowns fitting surfaces were sandblasted for 10sec with 50 $\mu$  alumina particles at the distance of 10mm with 3bars pressure. While HRC crowns were etched by 4% buffered hydrofluoric acid gel (BISCO, USA) for 60sec and rinsed thoroughly with water. Then all the manufactured crowns were cleaned in a deionized water bath using an ultrasonic cleaner for debris and alumina particles removal. After cleaning the prepared teeth with brush and pumice for 10sec, dentin conditioner (3M Deutschland GmbH, Germany) was applied to the bonding surfaces using cotton pellet. Following complete rinsing with water, drying with cotton pellets was done.

Self-adhesive dual-cure resin cement was applied against the internal walls of crowns, which were slowly seated to its antagonist prepared teeth. 5Kgs static load was applied to each crown using special custom made load applicator apparatus. Initial light curing was done for 2-3sec for all crown aspects, followed by removal of the excess cement around the crown margins. The final light curing was performed for 30sec (Figure 2) with wave length of 420-480nm and light intensity of 1000-1200m

W/cm<sup>2</sup> and distance of no more than 10mm. Self-curing was held under the load for 5min. According to ISO/TC 11405:2003, the cemented premolars were stored in separate 30ml distilled water storage containers for 24hrs.

### Piezoelectric ultrasonic scaler strokes application

Considering frequent oral hygiene recalls twice a year, each group of cemented ceramic crowns was subdivided into four subgroups based on the amount of scaler strokes used; A1 and B1 (n=5 each) were stored subgroups, A2 and B2 (n=5) each were subjected to 6 full repeated strokes representing 3 years, subgroups A3 and B3 (n=5) for each received 10 complete repeated strokes representing 5 years and A4 and B4 (n=5) each underwent 14 full repeated strokes indicating 7 years.

A custom-made manufactured device was employed to accomplish standard scaling, by fixing scaler handpiece in position. Piezoelectric ultrasonic scaler gingival treatment tips were used, with half of the strokes using the G2 tip and the other half using the G4 tip.

Tips 0° angulation to the crown margins, the instrumentation was applied parallel to the tooth-crown margin interface. The tip lateral side was utilized to trace the crown-enamel interface for 15sec on each aspect of the cemented ceramic crown

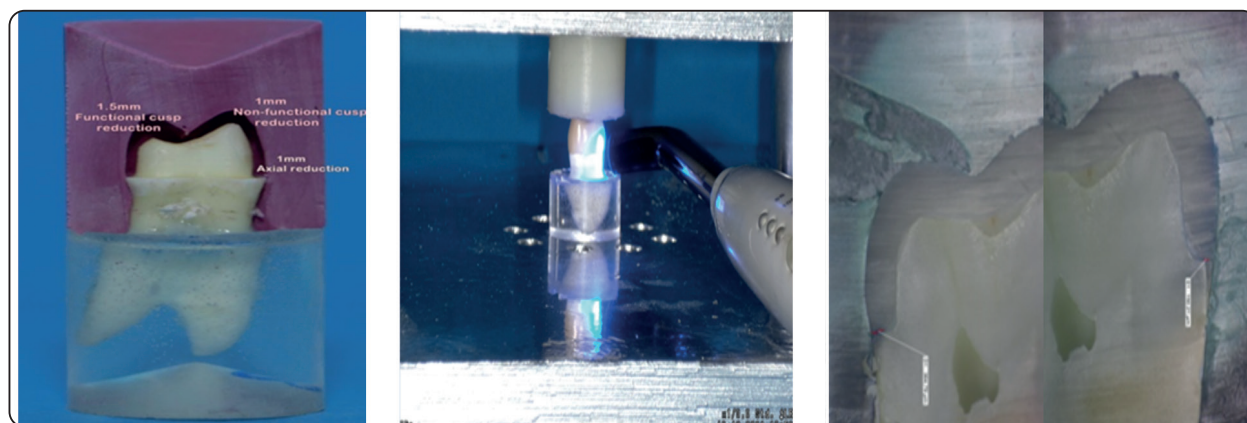


Fig. (1): Reduced premolar with index

Fig. (2): Light curing under static load

Fig.(3): Stereomicroscope images

margin with medium power “4” under enough water coolant. Each whole stroke cycle lasted 60sec that represented every 6 months periodic hygiene care.

### Marginal leakage testing

At CEJ, samples were painted with a second coating of nail varnish. At room temperature, each sample was put in a separate 30ml container with 2% aqueous MB solution for 24hrs. Washing of all samples was done under running water, then left to dry.

Each sample was capped with epoxy fabricated for easy buccolingual sectioning with diamond disc attached to electric precision cutting saw (Isomet 4000 Linear Precision Saw, Lake Bluff, Illinois, USA). Using a stereomicroscope (Nikon MA 100, Japan) at 50X magnification, half of the sectioned specimens were imaged and analyzed at the buccal and lingual edges. Image analysis software (Omnimet, Buehler, USA) was used to analyze all recorded specimens images for linear dye penetration in  $\mu\text{m}$  (Figure 3). Leakage percentage was calculated according to *Chang B. et.al, 2017*<sup>(6)</sup>:

$$\frac{\text{Linear distance of dye penetration}}{\text{Linear distance from the external crown margin to full axial distance}} \%$$

### Scanning electron microscope (SEM):

For an explanation based on science, a specimen from each zirconia subgroup was randomly selected for SEM examination. Each specimen's surface was treated with fine coat ion sputtering. Under a scanning electron microscope (JSM-IT200 Jeol, Tokyo, Japan), the four specimens were analyzed. The photos were amplified to a magnification of X120 and examined.

## RESULTS

Data from the two groups' outcomes was gathered, collated, and statistically examined. Means and standard deviations were used to summarize the

data. One-way analysis of variance (ANOVA) test was used to compare more than two independent normally distributed subgroups. An alpha level of 5% was used with significance level of 95%, and a beta error up to 20% was tolerated with an 80% power of test.

### Repeated strokes effect on marginal leakage percentage for different ceramics

Regarding zirconia independent samples t (student's) test statistical significant <.05 (Table 2), subgroup4 had the greatest mean for microleakage, whereas subgroup1 had the lowest one. The mean of subgroup 3 was statistically significant when compared to subgroups 1 and 2. Furthermore, subgroup 4 was statistically significant in comparison to the other zirconia subgroups. Using an independent samples t (student's) test, the tested groups were compared within each subgroup. On the other hand, HRC subgroups' means and standard deviations were statistically negligible.

### Long-term time intervals impact on leakage

Comparison showed subgroup4 (7yrs) had the greatest mean microleakage with a statistically significant difference from untreated subgroup1 (0yr) (Table 3). The greatest microleakage mean was found for 7yrs repeated strokes with a statistically significant difference  $p=.021$ .

### Dye penetration performance of various ceramics

Microleakage percentage means and standard deviations for groups A and B were  $7.694 \pm 3.357$  and  $5.558 \pm 1.789$  m, respectively Table (4). With  $p=.022$ , the results revealed a statistically significant difference between the two ceramic groups. The zirconia group had the highest leakage mean. The hybrid resin ceramic category had the lowest average.

### Scanning electron microscope

The enlarged SEM images of the various zirconia subgroups revealed that subgroup 3 had cement degradation, which worsened with subgroup 4.

TABLE (2): Comparison between the tested groups within each subgroup using independent samples t (student’s) test:

Microleakage (%)	Zirconia Group A	Hybrid Resin Group B	P value between groups A and B
0 year (Subgroup1) Mean ± SD	5.472±0.522 <sup>a</sup>	4.966±1.707 <sup>a</sup>	p=.591 <sup>NS</sup>
3 years (Subgroup2) Mean ± SD	6.618±2.531 <sup>ab</sup>	5.218±2.180 <sup>a</sup>	p=.434 <sup>NS</sup>
5 years (Subgroup3) Mean ± SD	7.113±1.133 <sup>b</sup>	5.644±2.462 <sup>a</sup>	p=.037*
7 years (Subgroup4) Mean ± SD	11.573±3.182	6.405±0.829 <sup>a</sup>	p=.020*

\*: Statistically significant NS: Not statistically significant Statistically significant if <.05

Same letters within the same column means are not significantly different.

TABLE (3): Comparison between different time intervals

Marginal leakage (%)	Time interval			
	0 year	3 years	5 years	7 years
Min. – Max.	3.307-7.269	3.371-9.429	3.026-8.840	5.514-15.918
Test of Significance p value	p=.021*			

Statistically significant if <.05 \*: Statistically significant

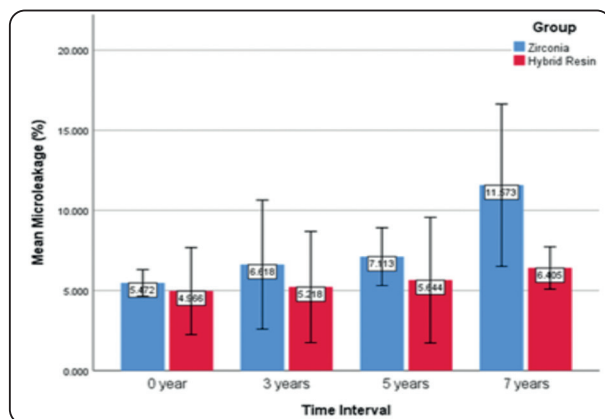


Fig. (4): Bar chart of Mean of Marginal leakage (%) by Subgroups by Time Interval

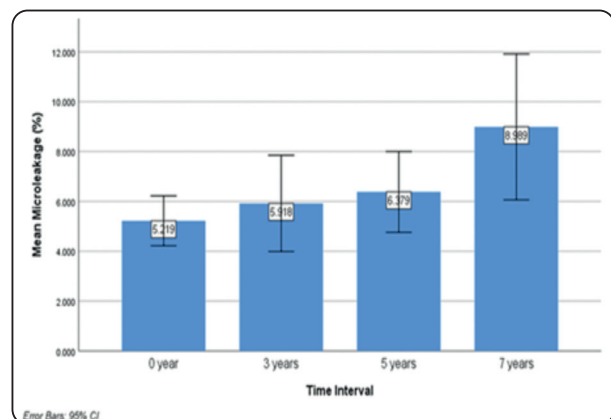


Fig. (5): Clustered Bar graph of Mean of Marginal leakage (%) in different time interval

This might lead to an increase in the microleakage percentages for the examined subgroup Figures (7-10).

TABLE (4): Comparison between performances of both groups

Marginal leakage (%)	Zirconia group A	Hybrid Resin group B
Min. – Max.	3.607-15.918	3.026-8.840
Test of Significance p value	p=0.022*	

Statistically significant if <.05 \*: Statistically significant

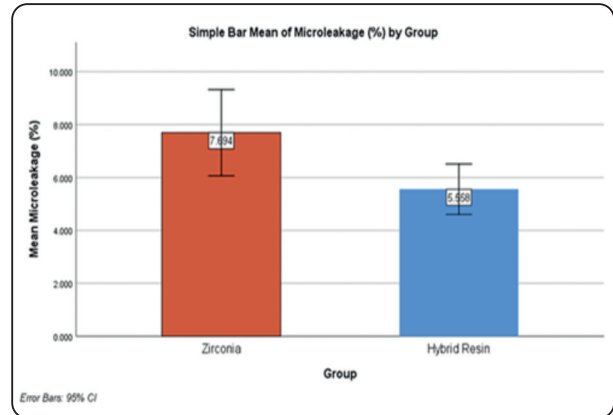


Fig. (6): Bar graph of Mean of Marginal leakage

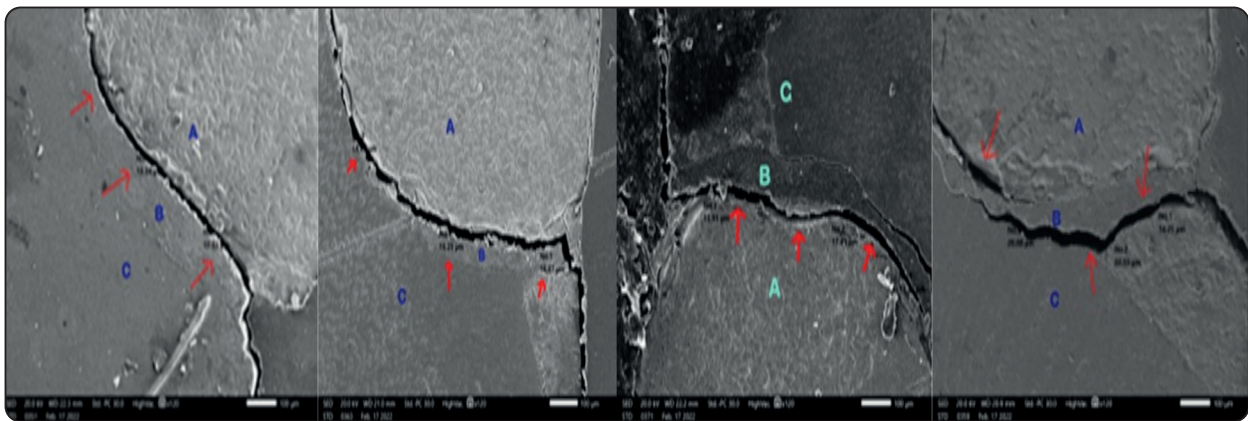


Fig.(7): Specimen-subgroup1 Fig.(8): Specimen-subgroup2 Fig.(9): Specimen-subgroup3 Fig.(10): Specimen-subgroup 4

A, B and C represent zirconia, resin cement and dentin respectively. Arrows showed the cement gap between zirconia crown margin and cement interface

**DISCUSSION**

This investigation was carried on to evaluate the effect of repeated piezoelectric ultrasonic strokes on marginal leakage of high translucent zirconia and hybrid resin ceramic. According to the results of the present study piezoelectric scaler had significant effect on zirconia microleakage, so the alternative hypothesis was accepted, although the hybrid resin ceramics showed neglectable effect.

Oral hygiene procedures are linked to plaque control sessions, effective prosthetic therapy and increase the restoration’s durability. In addition to basic home care, supportive periodontal treatment

is recommended twice a year. Oral hygiene is essential for socializing, functioning, and keeping a high quality of life (7). Dental biofilm is formed when periodontal care is neglected, which ends up to restorations failure (8).

This laboratory research, like the others, aimed to quantify the prosthetic materials’ performance in a controlled environment that mimicked clinical situations. For any In-vitro research including variables, standardization procedures are the most accurate ways. This will guarantee that the results have high power and that sample fabrication bias is minimized.(5) In the present study, human natural

teeth were selected due to their natural elastic characteristics, bonding capability and strength that better matching the clinic situations <sup>(10)</sup>.

This research samples were manually generated using a handpiece coupled to a dental surveyor. This provided for tooth wear and cutting depth control, which is critical for emulating indirect restoration tooth preparations <sup>(11,12)</sup>. In the current investigation, minimally invasive preparation for all-ceramics was followed since it assists in the long-term durability of restorations. <sup>(13)</sup> As a result, minimum material thickness parameters related to manufacturers' instructions were established, which was similar for both material types utilized to fabricate the current research crowns. The preparation convergence angle has a direct impact on crown resistance and retention. According to *Ebadian B.et.al, 2021* <sup>(14)</sup>, total convergence 12° was employed in the current investigation to get lesser microleakage values <sup>(14)</sup>. Furthermore, it has the capability to reduce frictional resistance during crown seating.

The restorative ceramic material used in this study meet all of the criteria for appropriate restorative material aesthetic needs, mechanical requirements, the color of the dental substrate, and parafunction behaviors <sup>(9)</sup>. *Church TD.et.al, 2017* <sup>(15)</sup> and *Sen N.et.al, 2020* <sup>(16)</sup> both declare that high-translucency monolithic zirconia has outstanding aesthetics, great strength qualities, and good biocompatibility. As it possesses ideal flexibility, stress resistance, and light conductivity, hybrid ceramics enable combining the advantageous qualities of ceramics and composites, providing greater visual adaptability <sup>(17,18)</sup>. Furthermore, they are less abrasive on the opposing dentition.

Restoration retention and sealability are affected by the cementation protocol. Furthermore, the cement inclusion of a functional monomer, such as 10-MPD, might strengthen bond strength via being mechanically stronger due to its higher penetration and lower viscosity <sup>(19)</sup>. Before using self-adhesive cement, the dentin was pretreated with dentin

conditioning to optimize bond strength values <sup>(20,21)</sup>.

Professional oral hygiene care is normally conducted biannually for moderate-risk patients at 6months fixed intervals will manage and enhance patient oral health outcomes <sup>(22, 23)</sup>. The number of cycles was established based on the average service life of fixed prosthesis. The instrumentation parameters in this investigation were 0 degree tip angulation with a medium power setting, which was based on minimum root roughness.

According to *Mahiroglu MB.et.al, 2020* <sup>(24)</sup>, *Vengatachalapathi H.et.al, 2017* <sup>(25)</sup> and *Sinha A.et.al, 2019* <sup>(26)</sup> smoother resulting surface is required for minimum bacterial adherence. Under the same forces, piezoelectric scalers left smoother root surfaces than magnetostrictive scalers <sup>(24)</sup>. The important terms should be regarded during ultrasonic scaling; lateral force, power setting, working tip form, and angulation according to research *Babina K.et.al, 2021* <sup>(18)</sup>.

Although methylene blue particles are smaller than the usual size of bacteria, dye immersion techniques were simple to use to assess leakage <sup>(27)</sup>. For all dyes, the depth of penetration may be assessed under the stereomicroscope <sup>(28)</sup>. This evaluation process is primarily a qualitative and quantitative assessment approach for displaying dye penetration patterns.

This research demonstrated a statistical significant increase in dye penetration for zirconia after 5 and 7 years of repetitive strokes, hence the relative hypothesis was accepted. Previous studies for long-term assessment did not conduct with the same time periods. Non-treated and three-year samples were unaffected confirming the findings of *Azer 2020* <sup>(5)</sup>, *CHANG B.et.al, 2017* <sup>(6)</sup> and *Lei JI. et. al, 2020* <sup>(29)</sup>. While *Eggmann F.et.al., 2021* <sup>(30)</sup> had shown that marginal degradation of ceramic crowns occurs with frequent use of ultrasonic instruments. This theory is consistent with the findings of the current investigation, which revealed a considerable increase in microleakage after 7yrs of repetitive strokes.



The null hypothesis was rejected, although the microleakage raise was statistically negligible to the maximum repeated strokes for the hybrid resin ceramic utilized in the current investigation. This was explained by *Bajraktarova-Valjakova E.et.al, 2018<sup>(31)</sup>* who stated that HRC act as shock absorbent restorative material. These hybrid group values agreed with *Badawy HM.et.al, 2018<sup>(32)</sup>*, who investigated microleakage of hybrid ceramic crowns using two CAD/CAM scanning techniques. When the findings of both groups were compared, the zirconia group had a much greater microleakage percentage with mean±SD 7.694±3.057 than hybrid resin group with mean±SD 5.558±1.789.

Several prior investigations, examined microleakage when ultrasonic scaling was used but only for short time periods. There were no other researches in the literature comparing the effect of long-term exposure to piezoelectric ultrasonic scaling on marginal leakage of teeth reconstructed with zirconia and hybrid resin.

All oral cavity factors, such as occlusal pressures, the presence of varied volumes of saliva with changing pH and bacteria were not simulated, that was considered the limitation of test methods applied in this research. It does not precisely replicate real-life oral circumstances, and further clinical research is required before application in general clinical practice.

## CONCLUSIONS

Within the limitations of the present study, the following conclusions can be withdrawn:

1. Piezoelectric ultrasonic long-term scaling has clinically acceptable leakage behavior for zirconia crowns.
2. Marginal leakage was significantly affected by the ceramic material type which was lesser for hybrid resin ceramics.

## REFERENCES

1. Gopalasamy K, Kaarthikeyan G. To assess the Knowledge about the principles in using the Ultrasonic Scalers among the Undergraduates: A Questionnaire Study. *Research Journal of Pharmacy and Technology*. 2016 Sep 1;9(9):1344.
2. Jorquera G, Mahn E, Sanchez JP, Berrera S, Prado MJ, Stange VB. Hybrid Ceramics in Dentistry: A Literature Review. *Journal of Clinical Research in Dentistry*. 2018; 1(2):1-5.
3. Phillips RW: *Anusavice KJ. Phillips' science of dental materials*, 12th Edition. Elsevier/Saunders; 2013.
4. Yavuz I, Aydın H. New direction for measurement of microleakage in cariology research. *J Int Dent Med Res*. 2010 Mar 1;3(1):19-24.
5. Azer AS. The effect of ultrasonic scaling on microleakage around zirconia crown margins luted with two resin cements. *Egyptian Dental Journal*. 2020 Oct 1;66(4-October (Fixed Prosthodontics, Removable Prosthodontics and Dental Materials)): 2481-9.
6. Chang B, Goldstein R, Lin CP, Byreddy S, Lawson NC. Microleakage around zirconia crown margins after ultrasonic scaling with self-adhesive resin or resin modified glass ionomer cement. *Journal of Esthetic and Restorative Dentistry*. 2018 Jan;30(1):73-80.
7. Rosado-Vila G, Zapata-May R, Orozco-Rodriguez R, Sánchez-Alvarez L. The impact of learning towards the care of dental prosthesis and oral hygiene El impacto del aprendizaje hacia el cuidado de las prótesis dentales y la higiene bucal. *ECORFAN Journal-Republic of Guatemala*. December 2021, Vol.7 No.13 1-10.
8. Srimaneepong V, Heboyan A, Zafar MS, Khurshid Z, Marya A, Fernandes GV, Rokaya D. Fixed Prosthetic Restorations and Periodontal Health: A Narrative Review. *Journal of Functional Biomaterials*. 2022 Mar;13(1):15.
9. Bataineh K, Al Janaideh M, Abu-Naba'a LA. Fatigue Resistance of 3-Unit CAD-CAM Ceramic Fixed Partial Dentures: An FEA Study. *Journal of Prosthodontics*. 2022 Feb 3.
10. Chitmongkolsuk S, Heydecke G, Stappert C. Fracture strength of all-ceramic lithium disilicate and porcelain fused-to-metal bridges for molar replacement after dynamic loading. *Eur. J. Prosthodont Restor Dent* 2002; 10:15-22.
11. Nayyef MI, Ibraheem AF. Marginal Microleakage of Monolithic Zirconia Crowns Using Different Marginal Cement Space Thickness and Luting Cements. *Journal of Research in Medical and Dental Science*. 2021 Jul;9(7):17.

12. Vanlioglu BA, Evren B, Yildiz C, Uludamar A, Kulak Özkan Y. Internal and marginal adaptation of pressable and computer-aided design/computer-assisted manufacture onlay restorations. *International Journal of Prosthodontics*. 2012 May 1;25(3).
13. Yu H, Zhao Y, Li J, Luo T, Gao J, Liu H, Liu W, Liu F, Zhao K, Liu F, Ma C. Minimal invasive microscopic tooth preparation in esthetic restoration: a specialist consensus. *International journal of oral science*. 2019 Oct 2;11(3):1-1.
14. Ebadian B, Fathi A, Savoj M. In Vitro Evaluation of the Effect of Different Luting Cements and Tooth Preparation Angle on the Microleakage of Zirconia Crowns. *International Journal of Dentistry*. 2021 Aug 6;2021.
15. Church TD, Jessup JP, Guillory VL, Vandewalle KS. Translucency and strength of high-translucency monolithic zirconium oxide materials. *Gen Dent*. 2017 Jan 1;65(1):48-52.
16. Sen N, Isler S. Microstructural, physical, and optical characterization of high-translucency zirconia ceramics. *The Journal of prosthetic dentistry*. 2020 May 1;123(5):761-8.
17. Hussein RF. Effect of Various Ph Media on Some Optical Properties and Surface Roughness of Bilayered Reinforced Polymer and Monolithic Hybrid Ceramic (An In-Vitro Study). *Al-Azhar Journal of Dental Science*. 2020 Jul 1;23(3):255-62.
18. Skorulska A, Piszko P, Rybak Z, Szymonowicz M, Dobrzyński M. Review on Polymer, Ceramic and Composite Materials for CAD/CAM Indirect Restorations in Dentistry—Application, Mechanical Characteristics and Comparison. *Materials*. 2021 Jan;14(7):1592.
19. Mahrous A, Radwan MM, Kamel SM. Micro-Shear Bond Strength of Novel MDP Calcium-Fluoride-Releasing Self-Adhesive Resin Cement After Thermocycling. *Int J Periodontics Restorative Dent*. 2020 May 1;40:445-55.
20. Ibraheim SA. Impact of Dentin Conditioning On Shear Bond Strength of Self-Adhesive Resin Cement. *Egyptian Dental Journal*. 2018 Oct 1;64 (4-October (Fixed Prosthodontics, Dental Materials, Conservative Dentistry & Endodontics)):4027-37.
21. Luiz-Roberto-Dallari Junior, Kusai Baroudi, Leonardo-dos Santos Barroso ME, Miranda RP. Bond strength of self-adhesive resin cement to dentin using different adhesion protocols. *Journal of Clinical and Experimental Dentistry*. 2022 Jan;14(1):e35.
22. Sonnenschein SK, Kohnen R, Ruetters M, Krisam J, Kim TS. Adherence to long-term supportive periodontal therapy in groups with different periodontal risk profiles. *Journal of clinical periodontology*. 2020 Mar;47(3):351-61.
23. Patel R, Uppal RS. Supportive Periodontal Therapy : A Brief Review. 2021;25–31.
24. Mahiroglu MB, Kahramanoglu E, Ay M, Kuru L, Agrali OB. Comparison of Root Surface Wear and Roughness Resulted from Different Ultrasonic Scalers and Polishing Devices Applied on Human Teeth: An In-Vitro Study. *InHealthcare* 2020 Mar (Vol. 8, No. 1, p. 55). Multidisciplinary Digital Publishing Institute.
25. Vengatachalapathi H, Naik R, Rao R, Venugopal R, Nichani AS. The Effect of Piezoelectric Ultrasonic Scaler Tip Wear on Root Surface Roughness at Different Working Parameters: An Atomic Force Microscopic and Profilometric Study. *Journal of the International Academy of Periodontology*. 2017 Jan 2;19(1):15-21.
26. Sinha A, Kaur S, Kour K. Scanning electron microscopic evaluation of root surface morphology after root planning with curettes and ultrasonic perio minitips; Aninvitrostudy. *International Journal of Oral Health Dentistry*, April-June, 2019;5(2):104-112.
27. Fabianelli A, Pollington S, Davidson CL, Cagidiaco MC, Goracci C. The relevance of microleakage studies. *Int Dent SA*. 2007 Jun;9(3):64-74.
28. Jafari F, Jafari S. Importance and methodologies of endodontic microleakage studies: A systematic review. *Journal of clinical and experimental dentistry*. 2017 Jun; 9(6):e812
29. Lei JI, Jie QI, Ya-hong LU, Hong CH, Ye-xin SH, Zhi-hui LI, Jie FA. Effect of ultrasonic scaling on micro-leakage of all-ceramic crowns. *Shanghai Journal of Stomatology*. 2020 Feb 25;29(1):36
30. Eggmann F, Schiavone F, Amato J, Vahle A, Weiger R, Zitzmann NU. Effect of repeated ultrasonic instrumentation on single-unit crowns: a laboratory study. *Clinical Oral Investigations*. 2021 Nov 24;1-3.
31. Bajraktarova-Valjakova E, Korunoska-Stevkovska V, Kapusevska B, Gigovski N, Bajraktarova-Misevska C, Grozdanov A. Contemporary dental ceramic materials, a review: chemical composition, physical and mechanical properties, indications for use. *Open access Macedonian journal of medical sciences*. 2018 Sep 25;6(9):1742.
32. Badawy HM, Ghazy MH. Marginal Fit And Microleakage Of Hybrid Ceramic Crowns Fabricated Using Two Cad/Cam Systems: A Laboratory Study. *International Journal of Dental and Health Sciences*. Volume 05, Issue02.2018; 5(2):201-2018. <http://nebula.wsimg.com/91db8e9a33b72583ff10af9f8f56f38f?AccessKeyId=44189AF8BC7E3D5EEFEF&disposition=0&alloworigin=1>