



Evaluating the genetic diversity in maize hybrids under drought conditions using drought indices, SSR markers, and thermal imaging

Emam, M.A. ^{1*}, Samah A. Sabry ², O.M. Ghanem ³ and Amal M. Abd EL-Mageed ²

¹ Agronomy Department, Faculty of Agriculture, Suez Canal University, 41522 Ismailia, Egypt.

² Department of Agricultural Botany, Faculty of Agriculture, Suez Canal University, 41522 Ismailia, Egypt.

³ Soil and Water Department, Faculty of Agriculture, Suez Canal University, 41522 Ismailia, Egypt.

Abstract

The aim of the study was screening fourteen hybrids of maize under normal and drought stress. A field trial was carried out during two summer seasons on an experimental farm, Ismailia, Egypt. Growth, yield physiological traits have been estimated. Indices of drought resistance were calculated for each hybrid; mean productivity, drought susceptibility index, tolerance index, geometric mean productivity and yield stability index. Simple sequence repeat analysis of DNA (SSR) was applied to estimate the genetic differentiation among the hybrids. Results showed that corn yields were significantly reduced during drought conditions. Maize hybrids exhibited significant differences for physiological and quantitative traits; plant height, number of leaves, ear height, ear diameter, ear length, relative water content (RWC) and chlorophyll content. In this study, the hybrids divided successfully into four groups according to their drought tolerance and yield production by using drought resistance indices. One of these groups; S.C128, S.C162, S.C167 and S.C176 hybrids had the highest yield under both conditions and more adaptive under drought stress. The results of the SSR analysis showed that polymorphism % was ranged from 50 to 67% with an average 58.5%, while polymorphism information content (PIC) values were ranged from 0.32 to 0.57. Genetic similarity coefficient values were ranged from 0.625 to 1.000 with an average of 0.8125. The study concluded that SSR analysis and drought indices results are quite similar. Thermal images were more effective for selecting maize hybrids for drought stress. Consequently; we recommended it to use in plant breeding experiment.

Keywords: Drought; Maize hybrids; SSR; Thermal images; Tolerance Indices.

1. Introduction

Maize (*Zea mays* L. $2n=20$) is considered an important cereal crop belongs to family Poaceae with producing 7.49 Gg / 0.99 M ha (FAO STAT, 2020). Maize used in human food, animal feed and industrial products. The local production of maize is not sufficient to meet the excessive demand, especially the yellow grains in Egypt (Ali and Abdelaal, 2020). Maize crop needs high irrigation requirements; so, the crop sensitive to abiotic stresses; salinity, high temperature and

drought at different growth stages; especially at flowering and pollination stages (Gomaa *et al.*, 2017; Sah *et al.*, 2020). The plant responses for drought were differed according to; plant age, genotype, properties of soil, level and period of drought (Gabr Afaf *et al.*, 2018).

Increasing irrigation intervals or skipping one or more irrigations significantly decreased the efficiency of the plants by decreasing growth, yield, total chlorophyll, relative water content (RWC), protein and oil % (Soltani *et al.*, 2013; Gomaa *et al.*, 2017; Mohammed *et al.*, 2017; Li *et al.*, 2018; Ali and Abdelaal, 2020). Grain yield trait was considered a polygenic trait

*Corresponding author: Mohamed A. Emam

Email: mohamed_abdel-gawad@agr.suez.edu.eg

Received: January 30, 2023; Accepted: February 25, 2023;

Published online: February 25, 2023.

©Published by South Valley University.

This is an open access article licensed under

administered by interaction between environment and genotype, so the selection for high grain yield was difficult as a result of low heritability of grain yield and there were positive and significant correlations among grain yield and each of kernels number/ row and ear length under drought condition (Nigem, 1989 Akaogu *et al.*, 2017; Adu *et al.*, 2019). Some drought indices were used to evaluate and identify genotypes under normal and drought conditions; Selection index was more effective than direct selection for grain yield of some crops (Greziak *et al.*, 2012; Bayoumi *et al.*, 2015; Gabr Afaf *et al.*, 2018; Emam *et al.*, 2022). On the other hand, the using of molecular markers such as simple sequence repeat (SSR) markers present a promising method to identify stress tolerance genes due to the fact that it characterized by its recognition of co-dominancy (Bawa *et al.*, 2015; Elci and Hancer, 2015; Younis *et al.*, 2020; Mdluli *et al.*, 2020; Khaled *et al.*, 2021). SSR markers were used for doing molecular characterization for twenty-four lines of maize was applied in previous studies (Gazal *et al.*, 2016; Kamara *et al.*, 2020) Also; hundred maize lines using a set of 32 SSR markers having genome wide coverage, which supports the significantly contributed of SSR markers to identify drought tolerant genotypes (Gazal *et al.*, 2018). Several crops had been characterized according to their response to environmental stresses by using thermal imaging (Munns *et al.*, 2010; Walter *et al.*, 2012). The study of plant water relations was needed to measure leaf temperature which resulted from several internal and external conditions by thermal infrared (IR) sensing, which used as an indicator of the water loss rate or stomatal opening that result of plant resistance to water stress (Stoll and Jones, 2007; Bayoumi *et al.*, 2016). The aim of study: Obtaining recommended hybrids had high productivity, adaptive and tolerant to drought condition. By studying the performance of some maize hybrids

under normal and drought conditions by determining agronomic, biochemical traits, physiological characters by using thermal camera and detect the genetic variability by using SSR molecular marker technique.

2. Materials and methods

A field trial was carried out in the two summer seasons 2019 and 2020 at the Experimental Farm, Faculty of Agriculture, Suez Canal University, Ismailia, Egypt under the above-mentioned two levels of irrigation water quantities (Normal full irrigation and stress water 50% of full irrigation). The full irrigation treatments were irrigated every 10 days, while the treatments which were exposed to drought stress were irrigated every 20 days, to assess in a randomized complete block design (RCBD) with each of two water treatments and three replications. Studied maize hybrids were produced by Maize Res. Dep., Field Crops Res. Inst., A.R.C. Egypt, namely: S.C.10, S.C.128, S.C.131, S.C.162, S.C.167, S.C.168, S.C.176, S.C.177 and pioneer 34449 (9 single crosses). Other five hybrids (three ways cross) T.W.C.321, T.W.C.324, T.W.C.353, T.W.C.360, T.W.C.3685 presented in Table (1). Each block was consisted of twenty-eight plots; and each plot was consisted of three rows of 21 plants spaced 30 cm apart within the row, while the rows were set 70 cm apart. Properties of the soil and cattle manure (CM) used in this study presented in Table 2. Agricultural practices were applied as recommended for the maize crop according to Ministry of Agriculture Recommendation's.

2.1. Growth and yield traits

Plant height, number of leaves and ear traits (Height, length and diameter) were measured and recorded. Moreover, at harvest; grain yield (Ton/fed.) (fed = 0.42ha) and 100 grain weight were determined for both water treatments.

Table 1. The Pedigree of fourteen hybrids of maize

1	S.C.10	Sids7 * Sids63	8	S.C.177	Sakha 10 * Giza 653
2	S.C.128	Sakha 13 * Sakha 9	9	pioneer 3444	Corteva Pioneer, USA
3	S.C.131	Sakha 9 * Sakha 5	10	T.W.C.321	S.C 21 * Sids7
4	S.C.162	Giza 653* Giza 639	11	T.W.C.324	S.C 24 * Sids7
5	S.C.167	Giza 339* Giza 657	12	T.W.C.353	S.C 162 * Sakha 1
6	S.C.168	Giza 639* Giza 658	13	T.W.C.360	S.C 162 * Sakha 2
7	S.C.176	Sakha 11 * sakha10	14	T.W.C.368	Unavailable

Table 2. Properties of the soil and cattle manure (CM) used in the study

Properties	Soil	CM
<u>Particle size distribution (%)</u>		
Sand	96.65	-
Silt	2.53	-
Clay	0.82	-
Textural class	Sand	-
Bulk density (g cm ⁻³)	1.52	-
Soil order	Aridisols	-
Field capacity (%)	18.2	-
pH	7.68*	7.57**
EC _e (dS m ⁻¹)***	1.28	12.89
<u>Soluble cations (meq l⁻¹)***</u>		
Ca ²⁺	6.11	25.0
Mg ²⁺	4.10	14.5
Na ⁺	2.23	39.0
K ⁺	0.36	50.4
<u>Soluble anions (meq l⁻¹)***</u>		
CO ₃ ²⁻	0.00	0.0
HCO ₃ ⁻	2.38	40.7
Cl ⁻	5.75	70.3
SO ₄ ²⁻	4.67	17.9
Organic C (g kg ⁻¹)	1.41	140.5
Total N ((g kg ⁻¹)	0.16	11.9
Available N (mg kg ⁻¹)	4.39	126.0
Available P (mg Kg ⁻¹)	9.32	120.0
<u>Micronutrients (mg Kg⁻¹)****</u>		
Fe	0.82	0.15
Mn	1.11	25.2
Zn	0.53	5.71
Cu	0.24	0.24

* In soil-water suspension (1:2.5).

** In CM-water suspension (1:5).

*** In CM and soil saturated extracts.

**** In DTPA extract.

2.2. Physiological Traits

2.2.1. Chlorophyll content

determined by meter readings; SPAD values (502 plus-Minolta, Japan) were taken at the anthesis stage for three times and the reading average was calculated.

2.2.2. Relative water content (RWC)

determined according to Schonfeld *et al.* (1988) for combined analysis for both seasons using the following equation:

$$\text{RWC \%} = \frac{\text{Fresh weight} - \text{dry weight}}{\text{Turgid weight} - \text{dry weight}} \times 100$$

2.3. Growth and yield traits

Plant height, number of leaves and ear traits (Height, length and diameter) were measured and recorded. Moreover, at harvest; grain yield (Ton/fed.) (fed = 0.42ha) and 100 grain weight were determined for both water treatments.

2.4. Physiological Traits

2.4.1. Chlorophyll content

determined by meter readings; SPAD values (502 plus-Minolta, Japan) were taken at the anthesis stage for three times and the reading average was calculated.

2.4.2. Relative water content (RWC)

determined according to Schonfeld *et al.* (1988) for combined analysis for both seasons using the following equation:

$$\text{RWC \%} = \frac{\text{Fresh weight} - \text{dry weight}}{\text{Turgid weight} - \text{dry weight}} \times 100$$

2.5. Tolerance indices

Relative decrease (RD %): calculated as the ratio of: = (Unstressed - stressed)/ unstressed plants (control).

Tolerance indices: mean productivity (MP), yield stability index (YSI) geometric mean productivity (GMP), drought susceptibility index (DSI) and), tolerance (TOL) for water stress were calculated based on grain yield under normal and

drought condition were calculated by the following:

according to Gupta *et al.* (2001) and according to Chaudhuri and Kanemasu (1982)

1. $\text{GMP} = \sqrt{Y_p \times Y_s}$
2. $\text{MP} = Y_p + Y_s / 2$
3. $\text{TOL} = Y_p - Y_s$
4. $\text{YSI} = Y_s / Y_p$
5. $\text{DSI} = (1 - Y_s / Y_p) / \text{DII}$

where;

Y_s = mean yields of a given genotype in stress conditions;

Y_p = mean yields of a given genotype in normal conditions;

DII = Drought intensity index.

The drought intensity index (DII) for each condition was calculated as

$$\text{DII} = 1 - X_s / X_p$$

$Y_s\%$ = mean yields of a given genotype in stress conditions expressed as % of mean under stress conditions.

2.6. Molecular analysis

2.6.1. Plant materials

Approximately 100 mg of young leaves tissue of each maize hybrids plants (two-week old) were taken and collected to extract genomic DNA. Samples stored in liquid nitrogen at -80°C

2.6.2. DNA extraction

the Jena bioscience kit was used to extract the DNA from leaves.

2.6.3. Polymerase Chain Reaction (PCR)

The isolated DNAs were then amplified using a Polymerase Chain Reaction (PCR) under the following conditions: In a reaction volume of 10 μl . (6.5 μl of ddH₂O, 5 ngl^{-1} of DNA, 1 mM of primer, and 1.5 μl of premix), the DNA was first denaturated at 94°C for 4 min, followed by 1 min of annealing at 55°C . and extension for 5 minutes at 72 degrees for of 35 cycles. The PCR results were combined with bromo-phenol blue gel loading dye and then subjected to electrophoresis on a 3.5 percent (w/v) agarose gel for analysis. A 0.5 mgml^{-1} solution of ethidium bromide was used to stain the gels. Gels were analysis to detect

the levels of polymorphism, band distribution among F₁ hybrid and a similarity matrix were determined by the Jaccard index for clustering by the Neighbour-joining algorithm on DARwin 6.5 software. The dendrogram constructed according to the Nei and Li's (1979) similarity matrix which was used to produce the unweighted pair group method with arithmetic mean (UPGMA). Gen. Alex Software was used to analyze the number of effective alleles (Ne) and polymorphic information content (PIC) calculated according to Botstein *et al.* (1980).

2.7. Thermal Image

Thermal images were taken with infrared thermal camera Ti-32 (Fluke Thermography, Germany). The height of the canopy was about one meter, Ti-32 Pro software (Infrared Solutions) used to analyze the images; Plant canopies and leaves emissivity for measurements were set at 0.96 while transmission correction was 85%. To obtain more accuracy, the span of auto adjusted thermal image is manually set, in addition to the level of the displayed as an important camera feature in order to detect minimum and maximum temperature of the entire display (Wilcox and Makowski, 2014).

Table 3. List of five SSR markers and their sequences used in the study. (retrieved from www.maizegdb.org)

Primer	Marker	Forward primer sequence	Reverse primer sequence
Primer 21	Umc2144	CCAGCCCCTATCTATTTGCTTGT	GAATACTATATCACGGTCGGTCCG
Primer 22	Umc2245	GCCCTGTTATTGGAACAGTTTACG	CGTCGTCTTCGACATGTACTTCAC
Primer 23	Umc2383	CATAGACGTGCCCTTGTCATC	CTCGCAACTGCGCTTCTAGATACT
Primer 16	Umc1664	AATTGTTTACTGCGCTGAACTCC	CCTCTTTCCTGTACCGTGTATTC
Primer 14	Umc1424	CCGGCTGCAGGGGTAGTAGTAG	ATGGTCAGGGGCTACGAGGAG

3. Results and Discussions

3.1. Mean performance of maize hybrids under normal and drought conditions

Growth traits of maize hybrids presented in Tables 4,5 and 6. Drought caused significant decreasing plant height, leaves number, ear height, ear length and ear diameter by 13.7, 12.68, 10.49, 24.8 and 10%, respectively comparing with normal condition. This reduction might be due to the deficiency of absorbed water which inhibits the photosynthesis process (Bayoumi *et al.*, 2002; Ali and Abdella, 2020). Zlatev and Lidon (2012) showed that reactive oxygen species (ROS) were induced by some types of abiotic stresses causing harmful effects on plant growth through reactions and damage nucleic acids, proteins carbohydrates and lipids namely oxidative stress. In combined season, significant

differences were found among studied hybrids under both conditions. High mean values of plant height trait were recorded in plants of S.C.10, S.C.128 and S.C.267 hybrids under normal condition. S.C.10, T.W.C.368, S.C.131 and S.C.177 hybrids under drought conditions. These results are in agreement with results obtained by (Gabr Afaf *et al.*, 2018; Goma *et al.*, 2017) who reported that S.C.10 hybrid had the highest plants while T.W.C.321 had the shortest plants comparing with S.C.162 and S.C.129.

For leaves number trait, T.W.C.360, S.C.131, S.C.168, T.W.C.321 and T.W.C.324 had the highest number of leaves/ plant under drought condition without any significant difference among them. S.C.10 and S.C.128 hybrids had the highest mean values under normal condition, but great reduction happen in this trait for these hybrids under drought condition.

Table 4. Mean values of plant height and number of leaves /plant traits for 14 maize hybrids under normal and drought stress conditions.

Hybrids	PH		Mean	No. of leaves		Mean
	Normal	Stress		Normal	Stress	
S.C 10	263.33	217.33	240.33	17.67	14.67	16.17
S.C128	260.00	205.00	232.50	18.00	15.33	16.67
S.C 131	220.00	176.00	198.00	16.67	15.33	16.00
S.C 162	224.33	202.67	213.50	17.33	14.33	15.83
S.C 167	253.33	212.67	233.00	17.00	14.00	15.50
S.C 168	242.33	217.00	229.67	16.67	15.00	15.83
S.C 176	233.67	203.33	218.50	16.33	14.00	15.17
S.C 177	251.33	215.00	233.17	16.67	14.33	15.50
S.C 3444	251.67	212.00	231.83	17.33	14.33	15.83
T.W.C 321	201.67	181.67	191.67	17.00	15.33	16.17
T.W.C 324	220.00	195.00	207.50	17.33	15.00	16.17
T.W.C 353	204.00	186.00	195.00	15.67	14.67	15.17
T.W.C 360	208.33	181.00	194.67	16.67	15.33	16.00
T.W.C 368	242.33	222.33	232.33	16.00	14.67	15.33
Mean	234.02	201.93		16.88	14.74	
RD%		13.7%			12.68%	
L.S.D 5%	H= 4.90	& D= 2.59	& H*D =3.7	H=0.89	& D= 0.30	& H*D =0.53

H: Hybrids D: Drought

Table 5. Mean values of ear height and ear length traits for 14 maize hybrids under normal and drought stress conditions in combined analysis.

Hybrids	Ear height (cm)		Mean	Ear length (cm)		Mean
	Normal	Stress		Normal	Stress	
S.C 10	135.67	119.33	127.50	27.67	21.27	24.47
S.C128	132.33	117.00	124.67	25.30	19.50	22.40
S.C 131	131.33	122.00	126.67	25.23	17.83	21.53
S.C 162	135.33	118.33	126.83	24.40	20.00	22.20
S.C 167	133.33	123.33	128.33	22.70	17.67	20.18
S.C 168	133.67	122.33	128.00	26.60	20.33	23.47
S.C 176	129.33	114.67	122.00	25.50	16.67	21.08
S.C 177	135.33	119.33	127.33	25.70	17.67	21.68
S.C 3444	134.67	118.33	126.50	23.93	16.00	19.97
T.W.C 321	133.00	118.00	125.50	22.67	15.67	19.17
T.W.C 324	128.33	114.67	121.50	23.67	19.00	21.33
T.W.C 353	130.33	117.00	123.67	22.83	18.33	20.58
T.W.C 360	127.00	116.33	121.67	24.37	20.33	22.35
T.W.C 368	132.33	117.00	124.67	22.93	18.00	20.47
Mean	132.29	118.40		24.54	18.45	
RD%		10.49%			24.81%	
L.S.D 5%	H= 3.53	& D=0.98	& H*D = 1.8	H= 1.24	& D=0.49	& H*D = 0.89

H: Hybrids D: Drought

Zhu (2016) reported that drought stress was considered the hyperosmotic signal which may be induced increases amount of the abscisic acid

hormone (ABA), which enhanced the responses of adaption in plants. Drought caused significant decreasing of ear length reached 24.81%.

Significant differences among all hybrids were reported. S.C10 and S.C168 hybrids had the longest ears under both conditions and T.W.C360 hybrid under drought condition.

On the other hand, there were insignificant differences among hybrids under normal condition for the ear diameter trait. While, there was a significant difference in responses and values of ear diameter under drought condition. The widest ears were recorded in plants of S.C176, S.C177 and S.C3444 hybrids under both conditions. The lowest mean values of ear height were found in plants of T.W.C360, T.W.324 S.C176 hybrids under normal and drought conditions. While, the highest mean values were found in plants of S.C10, S.C162 and S.C177 hybrids under normal condition and S.C131, S.C167 and S.C168 hybrids under drought condition without significant difference among them.

Highly significant decrease in 100 grain weight from 31.98 under normal to 24.41g in combined season. S.C131 and S.C 167 hybrids were recorded the highest mean values under drought condition. S.C10, S.C 128, S.C177, S.C3444 and S.C167 hybrids had higher mean values of grain yield under both conditions respectively. Yadav and Singh, (2010) Pandit *et al.* (2016) and Gomaa *et al.* (2017) obtained similar results and reported wide variations in quantitative traits among maize genotypes. They confirmed significant differences among genotypes and water treatments. Especially the single crosses had highly significant increasing in grain yield might be due to it was more affected by drought conditions over genetic material. Ranatunga *et al.* (2009) confirmed that good knowledge about the environmental effects on quantitative helping to obtain accurate genotype classification.

Table 6. Mean values of ear diameter, 100 grain weight and grain yield traits for 14 maize hybrids under normal and drought stress conditions.

Hybrids	Ear diameter (cm)		Mean	100 grain weight (g)		Mean	Grain yield (ton/fed)		Mean
	Normal	Stress		Normal	Stress		Normal	Stress	
S.C 10	4.67	3.93	4.30	34.60	24.13	29.37	4.39	3.06	3.73
S.C128	4.40	3.73	4.07	34.73	25.53	30.13	3.93	2.99	3.46
S.C 131	4.63	4.00	4.32	32.43	27.53	29.98	4.17	2.95	3.56
S.C 162	4.40	4.07	4.23	32.23	26.00	29.12	3.62	2.99	3.30
S.C 167	4.40	3.93	4.17	34.57	27.00	30.78	3.95	3.04	3.50
S.C 168	4.33	4.10	4.22	40.43	23.67	32.05	4.04	2.82	3.43
S.C 176	4.73	4.17	4.45	29.37	24.00	26.68	3.74	2.89	3.31
S.C 177	4.67	4.24	4.46	29.40	24.33	26.87	4.21	2.80	3.51
S.C3444	4.50	4.29	4.40	30.47	24.00	27.23	4.21	2.83	3.52
T.W.C321	4.33	4.20	4.27	30.03	23.67	26.85	4.03	2.76	3.40
T.W.C324	4.33	3.97	4.15	30.90	23.00	26.95	3.73	2.67	3.20
T.W.C353	4.37	3.80	4.08	29.13	23.87	26.50	3.13	2.63	2.88
T.W.C360	4.30	3.78	4.04	29.13	22.33	25.73	3.23	2.51	2.87
T.W.C368	4.27	3.65	3.96	30.23	22.67	26.45	3.57	2.48	3.02
Mean	4.45	3.99		31.98	24.41		3.85	2.82	
RD%		10%			23.67%			26.75%	
L.S.D 5%	H= 0.17 & D= 0.059 & H*D =0.10			H= 1.25 & D= 0.51 & H*D =0.94			H=0.15 & D= 0.044 & H*D = 0.08		

H: Hybrids
D: Drought

3.2. Chlorophyll content by SPAD

Chlorophyll content trait showed significant decrease reach to 8.2% under drought condition comparing with normal condition. Two hybrids (S.C10 and S.C 167) were recorded the highest content under normal condition and S.C10 and T.W.C368 hybrids under drought condition. The lowest content of chlorophyll found in plants of T.W.C321 under both conditions (Table.7). Soltani, *et al.* (2013), Krol (2013) and Younis *et al.* (2017) reported that a water deficiency induced significant decrease in chlorophyll content by causing some physiological changes such as decreasing the closing of stomata, great damage of transpiration in leaves and inhibit some of photosynthetic process.

3.3. Relative water content (RWC)

RWC is considered to be a better measure of plant water status than thermodynamic state variables

(water potential, turgor potential and solute potential (Sinclair and Ludlow, 1985). In this study, plant water status under drought condition was identified by measuring RWC. The data in Table 7 show that under drought stress, the general mean value for RWC (67.86) was 9.8% lower than the control condition (75.27). This may be due to differences in the ability of the hybrids tested to accumulate and osmotically adapt to maintain tissue turgor and hence physiological activities such as expanding root depth to increase water reserves for crops (Siddique *et al.*, 2000). On the other, the average values of RWC decreased with drought stress in all the tested hybrids. S.C 10 hybrid had higher RWC value (73.13) while S.C 168 hybrid had lower RWC value (64) under drought stress (Table7).

Table 7. Mean values of SPAD reding of chlorophyll and relative water content traits for 14 maize hybrids under normal and drought stress conditions in combined analysis

Hybrids	SPAD		Mean	RWC		Mean
	Normal	Stress		Normal	Stress	
S.C 10	45.57	42.30	43.93	79.60	73.13	76.37
S.C128	44.87	40.50	42.68	82.33	71.51	76.92
S.C 131	44.20	40.67	42.43	78.10	69.37	73.73
S.C 162	42.00	40.00	41.00	73.70	72.07	72.88
S.C 167	45.27	40.00	42.63	72.31	67.67	69.99
S.C 168	44.33	40.67	42.50	78.50	64.00	71.25
S.C 176	43.73	38.67	41.20	73.37	67.33	70.35
S.C 177	44.60	39.67	42.13	76.33	65.00	70.67
S.C 3444	44.53	39.67	42.10	78.83	69.67	74.25
T.W.C 321	40.60	38.33	39.47	71.90	69.33	70.62
T.W.C 324	42.33	39.33	40.83	71.37	64.67	68.02
T.W.C 353	42.77	40.33	41.55	68.67	65.33	67.00
T.W.C 360	42.50	39.00	40.75	72.34	65.33	68.88
T.W.C 368	43.00	41.00	42.00	76.33	65.60	70.97
Mean	43.59	40.01		75.27	67.86	
RD%		8.21%			9.8%	
L.S.D5%	H= 1.08	& D= 0.34	& H*D = 0.6	H= 2.40	& D=0. 86	& H*D = 1.5

H: Hybrids D: Drought

This genotypic variation in RWC values may be recognized to differences in the ability of the variation to absorb more water from the soil and

or the ability to control water loss through the stomata's. Similar explanations have been stated in superior hybrids of maize (Farouk *et al.*, 2018;

Ali and Abdelaal, 2020). Remarkably, S.C 10 hybrid had the highest value of RWC under stress but it had the second value in orders under normal condition. The reason could be the plants have capacity to minimize the destructive effects of stress by changing their metabolism to handle with stress.

3.4. Tolerance indices analysis

3.4.1. Mean performance of maize hybrids based on the tolerance indices

Eight drought tolerance indices were valued by means of the grain yield (g) per plant in normal and drought conditions (Table 8). The highest grain yield value (4.39 g) was verified in S.C 10 hybrid followed by (4.21g) in S.C 177 and S.C 3444 hybrids under normal condition. Similar trend was showed by S.C 10 hybrid for grain yield value (3.06 g) under drought condition. The lowest grain yield value (3.13 g) was obtained in T.W.C 353 hybrid followed by T.W.C 360 (3.23g) under normal condition and in T.W.C 368 hybrid (2.48 g) and T.W.C 360 hybrid (2.51 g) under drought conditions. The variation in the grain yield (g) per plant under normal and drought conditions proposed the existence of important resources for getting drought tolerant hybrids under this study. The findings are in agree with finding of Abdi *et al.* (2013).

MP and GMP were in harmony ranged from 2.87 to 3.73 and, from 2.85 to 3.67, respectively.

Genotypes with highest GMP and MP values were favored under drought conditions (Farshadfar *et al.*, 2013). Consequently, based on these present indices, S.C 10 hybrid had the highest values, might tolerant hybrid. Whereas; T.W.C 360 hybrid was the most sensitive one. Noticeably;

nine hybrids (single crosses) and two hybrids of three ways cross (T.W.C 321 & T.W.C 324) were considered more productive (Table 8).

TOL was measured an efficient capacity to rise yield under drought environment

(Fernandez, 1992). The highest TOL values; 1.41, 1.38 and 1.32, were found in S.C 177, S.C 3444 and S.C 10 hybrids respectively. Thus, high amount of TOL is a representation of genotype susceptibility to stress (Parchin *et al.*, 2013). While, T.W.C 353 and S.C 162 with low TOL values (0.51 and 0.63) were considered as tolerant hybrids.

Concerning to the highest YSI values; 0.84, 0.83 and 0.78 were observed in T.W.C 353 S.C 162 and T.W.C 360 hybrids respectively. The three hybrids had the lowest values of DII (0.16, 0.17 and 0.22) and RD % (16.17, 17.33, and 22.47), respectively. These results reported that T.W.C 353 S.C 162 and T.W.C 360 hybrids were considered more stress tolerant and stable. Rosielle and Hamblin (1981), Gabr *et al.* (2018) and Hategekimana *et al.* (2018) recommended that the best variety had the lowest decreasing in yield under drought conditions.

3.4.2. Hybrids classification

According to Bayuomi *et al.* (2002); the studied hybrids were divided into four groups based on mean grain yield percent under stress condition (Ys%) and susceptibility index (DSI). The first group contain; S.C128, S.C162, S.C167 and S.c176 hybrids had Ys% over 100 and DSI less than one (< 1). They were higher productive and adaptive under both conditions (Table 8).

The second group contain; S.C10, S.C313, S.C168 and S.C3444 hybrids had Ys% over 100 and DSI more than one (> 1). They were higher productive under both conditions and less adaptive under stress. The third group included that S.C177, T.W.C 321, T.W.C324 and T.W.C 368 hybrids had Ys% below 100 and DSI more than one (> 1). They were less productive under both conditions and less adaptive under stress. The fourth group contained T.W.C360 and T.W.C353 hybrids that had Ys% below 100 and DSI less than one (< 1). They were low productive and adaptive under both conditions (Table 8). Ali and Abdelaal (2020) reported that maize genotypes S.C 168 as well as T.W.C 360, T.W.C 352 and T.W.C 368 had the lowest values

of relative yield reduction and drought susceptibility index (< 1), indicating that those genotypes were relatively drought tolerant genotypes. Similar results obtained by Khaled *et al.* (2013), Habliza and Abdelhalim (2017), Gabr

et al. (2018) and Ali and Abdelaal (2020) who reported that the genotypes showing DSI values < 1 were found to be more tolerant to drought stress while those had DSI values > 1 were sensitive to drought stress.

Table 8. Tolerance indices and relative decrease of 14 hybrids maize grown under normal and drought stress conditions.

Hybrids	Grain Yield g/plant		MP	GMP	TOL	Ysi	DSI	DII	Ys%	RD %
	Normal	Stress								
S.C 10	4.39	3.06	3.73	3.67	1.32	0.70	1.12	0.30	108.5	30.17
S.C128	3.93	2.99	3.46	3.42	0.94	0.76	0.89	0.24	106.02	23.94
S.C 131	4.17	2.95	3.56	3.51	1.22	0.71	1.08	0.29	104.6	29.23
S.C 162	3.62	2.99	3.30	3.29	0.63	0.83	0.64	0.17	106.02	17.33
S.C 167	3.95	3.04	3.50	3.46	0.92	0.77	0.86	0.23	107.8	23.19
S.C 168	4.04	2.82	3.43	3.38	1.22	0.70	1.12	0.30	100	30.17
S.C 176	3.74	2.89	3.31	3.29	0.85	0.77	0.84	0.23	102.5	22.66
S.C 177	4.21	2.80	3.51	3.43	1.41	0.66	1.24	0.34	99.3	33.54
S.C 3444	4.21	2.83	3.52	3.45	1.38	0.67	1.22	0.33	100.4	32.78
T.W.C 321	4.03	2.76	3.40	3.34	1.27	0.68	1.17	0.32	97.9	31.51
T.W.C 324	3.73	2.67	3.20	3.15	1.06	0.72	1.05	0.28	94.6	28.35
T.W.C 353	3.13	2.63	2.88	2.87	0.51	0.84	0.60	0.16	93.3	16.17
T.W.C 360	3.23	2.51	2.87	2.85	0.73	0.78	0.83	0.22	89	22.47
T.W.C 368	3.57	2.48	3.02	2.97	1.09	0.69	1.13	0.31	87.9	30.56

3.4.3. Correlation between grain yield and tolerance indices

The correlation coefficients between grain yield under control and stress conditions and drought tolerance indices were estimated and identified the best drought index. It could be an acceptable indicator for choosing the most promising genotypes. Table 9 presented that GMP, MP, DSI, had significantly positive correlation with grain yield under control and stress conditions. According to Blum (1988) indicated the

favorable index has positive correlation with yield under stress and non-stress environments. This strong correlation with yield under watered and drought treatments indicated that tolerance indices were adequate parameters to obtain some genotypes had drought tolerant and high yield under both conditions. Therefore, these results might be fruitful for choosing good drought indices. However, yield under control and stress conditions had significantly positive correlation (0.647).

Table 9. Correlation coefficients between yield under normal, stress drought condition and drought tolerance indices.

	Normal	Stress	MP	GMP	TOL	Ysi	DSI	DII
Normal	1	.647*	.961**	.941**	.865**	.727**	.735**	.727**
Stress		1	.832**	.867**	0.177	0.047	.038-	.047-
MP			1	.998**	.693**	.511-	0.52	0.511
GMP				1	.644*	.454-	0.463	0.454
TOL					1	.970**	.973**	.970**
Ysi						1	.999**	1.000**
DSI							1	.999**
DII								1

*. Correlation is significant at the 0.05 level & **. Correlation is significant at the 0.01 level

The reason for positive correlation between yield under control and stress conditions was the efficiency of water-use remained the same and not varied with change in water availability. Yield under control condition had positive correlation with each of MP (0.961), GMP (0.941), TOL (0.865), DSI (0.735) DII (0.727). These indices were suitable for selection genotypes in non-stress condition. Results were in harmony with Bayoumi *et al.* (2015) who reported that MP considered the mean production under both conditions could be used to select the genotypes. Where, YSI correlated negatively with TOL, Yp, MP, and GMP (0.970-.727-, 0.511- and 0.454-) respectively.

3.5. Simple Sequence Repeat (SSR) analysis

3.5.1. SSR Marker Informative

In this study, microsatellite markers were used for studying the genetic diversity of fourteen maize hybrids. five primers pairs of microsatellite were used, which had relatively high polymorphism in available literatures. Choice of the marker was based on the way that each ten chromosomes of maize could cover at least one descriptive marker. Using the primer pairs, genomic DNA was amplified and polymorphism was exhibited among the hybrids (Table 10 and Figure 1). However, the SSR marker informative was characterized by several parameters such as the number of alleles, percentage of polymorphism and polymorphic information content (PIC) and the effective number of allele (Table 10). The five markers produced eleven alleles across the tested maize hybrids. Six loci only were polymorphic; each marker amplified one polymorphic except SSR marker-Umc1664 generated two polymorphic bands. SSR marker-Umc2383 had one negative band at 140bp. The number of alleles per locus ranged from two to three alleles with average of 2.2. The low number of alleles might display in part the narrow genetic basis in fourteen maize hybrids used in this study. Other explanations might be due to the result by the

'short allele dominance', where, in heterozygotes including a short and a long allele, only the short allele is sufficiently amplified in the PCR reaction (Wattier *et al.*, 1998). The variability in the number of alleles per locus may outcome from different locus-specific mutation rates and reveals strong changes in allelic diversity between SSRs loci (Piyusha and Singh, 2018). However, the number of alleles noted in this investigation is not the same as what was found in earlier studies of maize using SSR markers (Sserumaga *et al.*, 2014). The allelic diversities should be measured with attention to the diverse sample sizes used; in addition, the same mean number of alleles may not display the same amount of variability (Ateş Snmezoğlu and Terzi, 2017).

Effective number of alleles (N_e) is the measure of allelic evenness. In this study, the results presented that the effective number of alleles (N_e) for the polymorphic markers ranged from 0.42 for SSR marker-Umc1664 to 0.715 for SSR marker-Umc1424) with average value of 0.567. The total number of effective alleles produced by the 5 SSR loci was 2.835. Table 8 was exhibited that the average of effective number of alleles was lower (0.567) than observed number of alleles (2.2). Because of low frequencies alleles had slight influence to the effective number of alleles. Agreeing with the selective standard of the microsatellite loci, at least four alleles to be measured useful for the assessment of genetic diversity. Bases on this criterion, the 5 SSR loci used in this study were useful for the evaluation of genetic diversity in 14 maize hybrids.

Polymorphism % ranged from 50% to 67% with an average 58.5%. PIC value varied from 0.32 (SSR marker-Umc2144) to 0.57 (SSR marker-Umc1664) with average of 0.435. This lower PIC value may be due to maize hybrids have narrow genetic diversity. On the other hand, the PIC depended on the number of alleles detected and on their distribution frequency. Moreover; PIC was subjective to location of primers in the genome used for study and genotype sensitivity to method used. Hence, PIC values increased

proportionally in SSR marker-Umc1664 (0.57) and SSR marker-Umc2383 (0.499) that might increase heterozygosity at each locus. The lower PIC value (0.32) for SSR marker-Umc2144 might be attributed to the concentration of gene

frequencies, which leads to deviance from the condition of maximum information content of a locus. This happens when all alleles have similar frequencies.

Table 10. Primer name, total number of bands, Number of effective alleles, number of different bands (monomorphic, polymorphic, and unique), polymorphism percent (%), and the polymorphism information content (PIC) for each SSR primer.

Primer Name	Total Band	Monomorphic Band	Polymorphic band	Unique Band	Polymorphic %	PIC%	Ne
Umc1424	2	1	1	-	50%	0.39	0.715
Umc1664	3	1	2	-	67%	0.57	0.42
Umc2144	2	1	1	-	50%	0.32	0.568
Umc2245	2	1	1	-	50%	0.397	0.618
Umc2383	2	1	1	1	50%	0.499	0.514
Total	11	5	6	1	0.64%	2.176	2.835
Mean	2.2					0.435	0.567

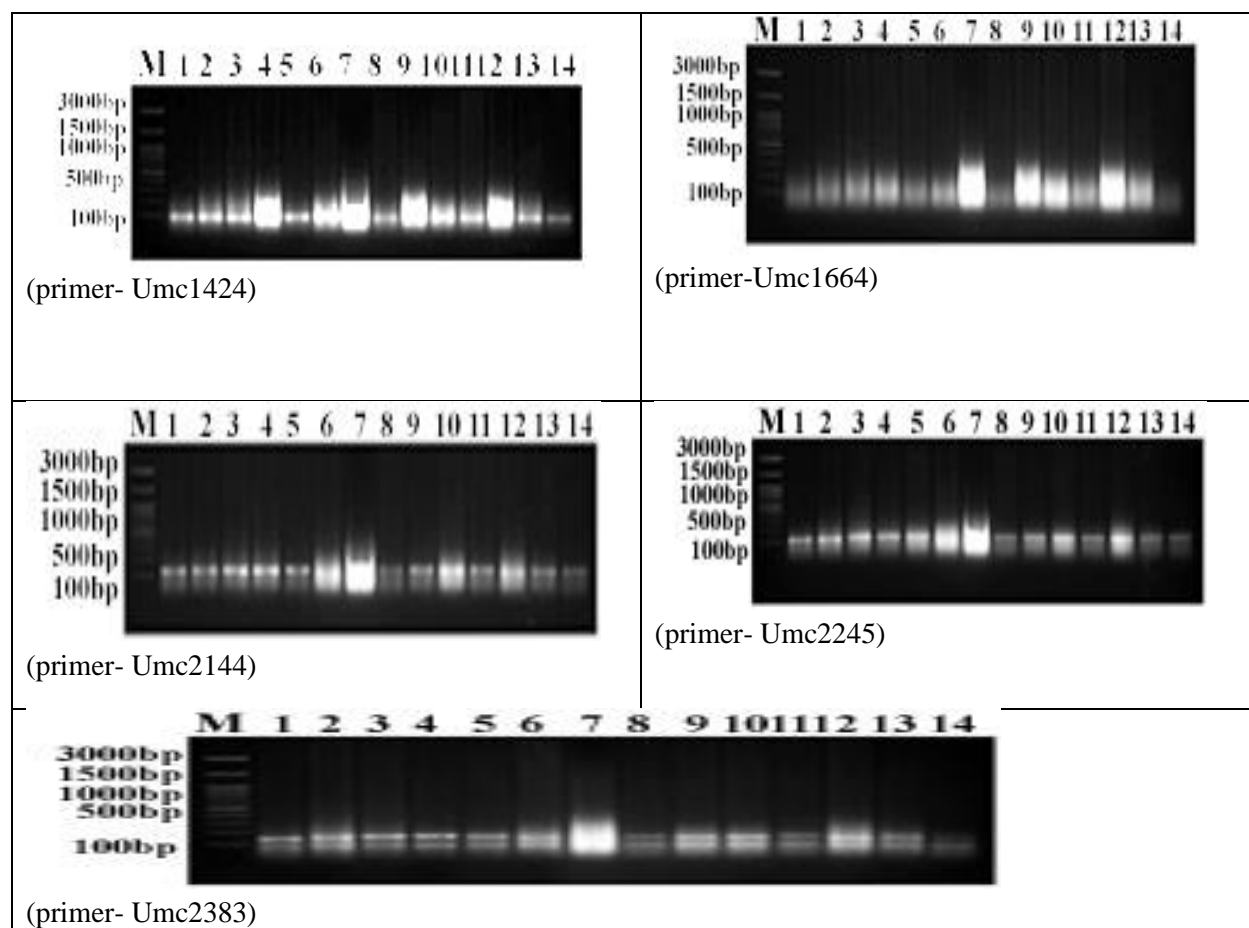


Figure 1. Five photos of SSR primers :Umc1424, Umc1664, Umc2144, Umc2245 and Umc2383 respectively each photo contains fourteen hybrids namely; 1: S.C.10, 2: S.C.128, 3: S.C.131, 4: S.C.162, 5: S.C.167, 6: S.C.168, 7: S.C.176, 8: S.C.177, 9: pioneer 3444, 10: T.W.C.321, 11: T.W.C.324, 12: T.W.C.353, 13: T.W.C.360, 14: T.W.C.368)

Gazal *et al.* (2016) explain these values of PIC; closely maize lines had lower values of PIC, while genetically diverse maize lines had high values of PIC. These results were in agreement with Ying *et al.* (2011), Hongbo *et al.* (2011), Nefzaoui *et al.* (2014), Mdluli *et al.* (2020) and Khaled *et al.* (2021) who reported that markers with PIC values greater than 0.5 are considered polymorphic and informative. Moreover; Semagn *et al.* (2006) illustrated that the SSR markers were characterized with co-dominant nature and high polymorphism.

3.5.2. Genetic Similarity

Genetic similarity coefficient among studied fourteen hybrids was ranged from 0.63 to 1.00

with an average similarity of 0.8125 (Table 11). These results showed wide range and high values of similarity contrasting to Roy *et al.* (2015) who found the wide range of similarity (0.22-0.87) but low values; might due to needing to increase the number of SSR primers to cover the whole genome to appear the accurate variability among related hybrids. The highest value of similarity (1) was found between each of (S.C10 and T.W.C360 hybrids), between (S.C128 and each of S.C131, S.C177 and T.W.C324 hybrids) and between (S.C131 hybrid and S.C177 and T.W.C324 hybrids). While the lowest value (0.63) was found between T.W.C353 and T.W.C386 hybrids.

Table 11. values of genetic similarity coefficient among fourteen maize hybrids.

Hybrids	S.C 10	S.C 128	S.C 131	S.C 162	S.C 167	S.C 168	S.C 176	S.C 177	S.C 3444	T.W.C 321	T.W.C 324	T.W.C 353	T.W.C 360	T.W.C 368
S.C 10	1.00													
S.C128	0.92	1.00												
S.C 131	0.92	1.00	1.00											
S.C 162	0.86	0.93	0.93	1.00										
S.C 167	0.92	0.86	0.86	0.80	1.00									
S.C 168	0.86	0.80	0.80	0.75	0.93	1.00								
S.C 176	0.75	0.82	0.82	0.78	0.82	0.89	1.00							
S.C 177	0.92	1.00	1.00	0.93	0.86	0.80	0.82	1.00						
S.C 3444	0.75	0.82	0.82	0.89	0.82	0.78	0.90	0.82	1.00					
T.W.C 321	0.80	0.88	0.88	0.82	0.88	0.94	0.95	0.88	0.84	1.00				
T.W.C 324	0.92	1.00	1.00	0.93	0.86	0.80	0.82	1.00	0.82	0.88	1.00			
T.W.C 353	0.71	0.78	0.78	0.84	0.78	0.84	0.95	0.78	0.95	0.90	0.78	1.00		
T.W.C 360	1.00	0.92	0.92	0.86	0.92	0.86	0.75	0.92	0.75	0.80	0.92	0.71	1.00	
T.W.C 368	0.91	0.83	0.83	0.77	0.83	0.77	0.67	0.83	0.67	0.71	0.83	0.63	0.91	1.00

3.5.3. Cluster Analysis

The dendrogram of fourteen studied hybrids constructed according to the Nei & Li's similarity matrix (Figure 2). The studied hybrids were divided into five main clusters (A, B, C, D, and E). Cluster (A) had three hybrids; separated into two sub clusters; one of them had PIONEER3444 hybrid only. The second sub cluster had T.W.C.353 and S.C.176. Second Cluster (B) had two hybrids; T.W.C.321 and S.C.168. Third Cluster (C) had T.W.C.368 only. Fourth Cluster (D) had two sub clusters; S.C.162 hybrid found

only in one. While the second sub cluster had T.W.C.324, S.C.177, S.C.131 and S.C.128 hybrids. The fifth cluster (E) had two sub clusters; S.C.167 hybrid in one and the second had T.W.C.360, and S.C.10 hybrids. From these clusters which illustrated the relationship and distance among different hybrids to direct any hybrid for a suitable breeding program. Because of SSRs markers were randomly scattered throughout the genome flanking vital regions might be coding or non-coding regions related with a specific trait (Henry, 2001). These results

were in harmony with Gazal *et al.* (2016), Kamara *et al.* (2020), and Acharjee *et al.* (2021) who reported that there was great correlation between the morphological characteristics of the

landraces and their pattern of clustering based on SSR molecular analysis that was found to be effective in identifying suitable landraces as a promising parent for a future breeding program.

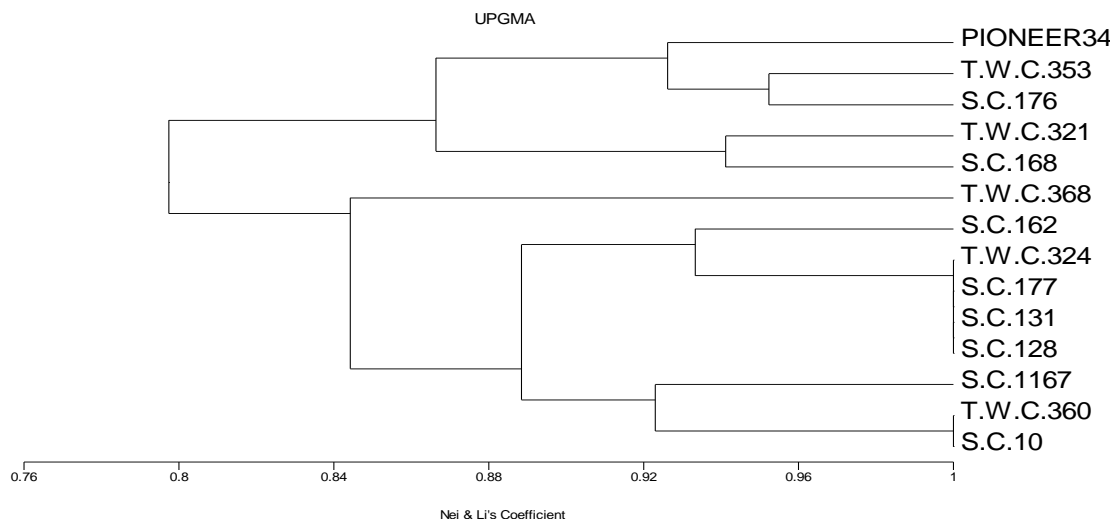


Figure 2. The dendrogram of fourteen studied hybrids of Maize constructed based on average of genetic distance among them by Unweighted pair group method of arithmetic averages (UPGMA).

3.6. Effect of drought stress on maize plant hybrids temperature (Canopy temperature)

The image analysis (Figure 3) was used to determine the differences of the average temperature for each hybrid to differentiate among fourteen maize hybrids under normal and stress conditions. Results were reported

differences among normal, stress and hybrids (Table 12). Regarding drought stress, the average canopy temperature increased from 35.8 °C to 39.8 °C in normal and drought conditions respectively.

Table 12. Average temperatures (C°) and stress indices for maize hybrids under drought stress.

Hybrids	Normal	Stress	Mean
S.C 10	35.2	41.1	38.2
S.C128	36.3	38.2	37.3
S.C 131	35.8	41.5	38.7
S.C 162	35.8	37.1	36.5
S.C 167	36.2	38.6	37.4
S.C 168	35.6	40.1	37.9
S.C 176	35.1	37.9	36.5
S.C 177	36.2	42.6	39.4
S.C 3444	35.1	40.6	37.9
T.W.C 321	36.1	39.5	37.8
T.W.C 324	35.5	42.1	38.8
T.W.C 353	36.2	38.2	37.2
T.W.C 360	35.5	39.2	37.4
T.W.C 368	35.5	40.8	38.2
Mean	35.7	39.8	

In general, there was no wide variation in average temperature of canopy in maize hybrids under normal condition. While there was a wide range in temperature of canopy hybrids under drought stress, from 37.1 °C to 42.6 °C in S.C 162 S.C 177 hybrids respectively. It is worth mentioning that hybrid S.C 162 were higher productive and

adaptive under normal and drought stress condition. So, we can say that thermal images were effective for selecting maize hybrids for drought stress based on the absolute canopy temperatures. Similar results had been reported by Stoll and Jones, (2007), Munns *et al.* (2010) and Walter *et al.* (2012).

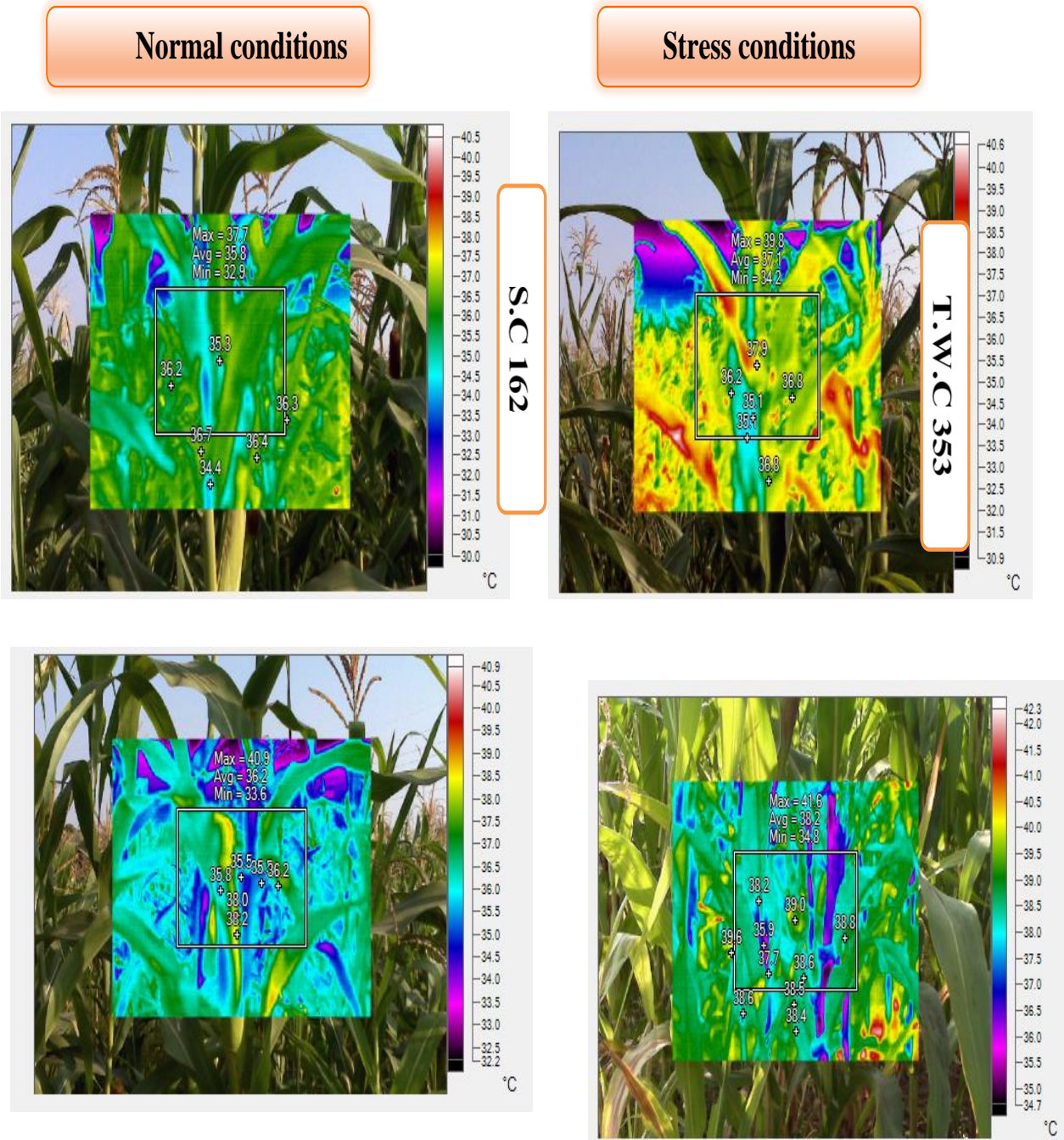


Figure 3. example infrared thermal images for hybrids maize (S.C 162 and T.W.C 353) when analyzing the images under normal and drought stress condition.

4. Conclusion

This study assesses the extent of genetic variation among 14 hybrids maize grown using different selection methods under normal and drought conditions. The use tolerance indices and SSR markers were effective to estimate the genetic diversity among fourteen hybrids and distinguished superior hybrids; S.C128, S.C162, S.C167 and S.C176 had high yield and high adaptive to drought tolerance. These single crosses were recommended for commercial production under normal and drought conditions and it can be crossed with other superior hybrids to produce three- or four-way hybrids for potential use. Thermal images were more effective for selecting maize hybrids for drought stress.

Authors' Contributions

All authors are contributed in this research.

Funding

There is no funding for this research.

Institutional Review Board Statement

All Institutional Review Board Statements are confirmed and approved.

Data Availability Statement

Data presented in this study are available on fair request from the respective author.

Ethics Approval and Consent to Participate

Not applicable

Consent for Publication

Not applicable.

Conflicts of Interest

The authors disclosed no conflict of interest starting from the conduct of the study, data analysis, and writing until the publication of this research work.

5. References

Abdi, N., Darvishzadeh, R., Maleki, H. (2013). 'Effective selection criteria for screening drought tolerant recombinant inbred lines of sunflower', *Genetika*, 45, pp. 153-166.

Acharjee S., Chakraborty, N. R., Das, S.P. (2021). 'Marker based genetic variability analysis of rice (*Oryza sativa* L.) landraces for drought tolerance', *African J. Biol. Sci.*, 17 (1), pp. 117-136.

Adu G.B., Awuku, F.J., Amegbor, I.K., Haruna, A., Manigben, K.A., Aboyadana P.A. (2019).

'Genetic characterization and population structure of maize populations using SSR markers', *Annals of Agricultural Sciences*, 64, pp. 47-54.

Akaogu I.C., Badu-Apraku, B., Adetimirin, V. O. (2017). 'Combining ability and performance of extra-early maturing yellow maize inbreds in hybrid combinations under drought and rain-fed conditions', *J. of Agric. Sci.*, 155, pp. 1520-1540.

Ali, O.A.M., Abdelaal, M.S.M. (2020). 'Effect of Irrigation Intervals on Growth, Productivity and Quality of Some Yellow Maize Genotypes', *Egypt. J. Agron.*, Vol. 42, No.2, pp. 105-122.

Ateş Sönmezoğlu, Ö., Terzi, B. (2017). 'Characterization of some bread wheat genotypes using molecular markers for drought tolerance', *Physiology and Molecular Biology of Plants*, 24, pp. 159-166.

Bawa A., Addai, I.K., Abdulai, M.S. (2015). 'SSR markers as tools for screening genotypes of maize (*Zea mays* L.) for tolerance to drought and *Striga hermonthica* (Del.) Benth in the Northern Guinea Savanna Zone of Ghana', *Research in Plant Biology*, 5(5), pp. 17-30.

Bayoumi, T.Y., Abd EL-Mageed, A. M., Ibrahim, E. S., Mahmoud, S. A., El-Demardash, I. S., Abdel-Raheem A. (2015). 'The impact of drought stress on some morpho-physiological traits and RAPD markers in wheat genotypes', *J. of plant production science*, Vol. (4), pp. 27-37.

Bayoumi, T.Y., Aly, A. A., Ammar, S. El.M.M (2002). 'Eco physiological characters as screening criteria for drought tolerance in durum wheat genotypes', *J. of plant production science*, Vol. (1), pp. 1-13.

Bayoumi, T.Y.; Eman, T. Abdou, Mahmoud Soad, A., Elshakhess, Samar, A.M. (2016). 'An Innovative Technique For Assessment Selection To Drought Tolerance In Sesame',

- 14th International Conference of Crop Science
- Blum, A. (1988). *'Plant breeding for stress environments'*, CRC Press. (1st ed.). CRC Press.
<https://doi.org/10.1201/9781351075718>
- Botstein, D., White, R. L., Skolnick, M., Davis, R. W. (1980). 'Construction of a genetic linkage map in man using restriction fragment length polymorphisms', *American Journal of Human Genetics*, 32(3), pp. 314.
<https://pubmed.ncbi.nlm.nih.gov/6247908>
- Chaudhuri, U.N., Kanemasu, E. T. (1982). 'Effect of water gradient on sorghum growth, water relations and yield', *Canadian Journal of Plant Science*, 62, pp. 599-607.
<http://dx.doi.org/10.4141/cjps82-090>.
- Elcia, E., Hancer, T. (2015). 'Genetic Analysis of Maize (*Zea mays* L.) Hybrids Using Microsatellite Markers', *J. of Agri. Sci.*, 21, pp. 192-198
- Emam M. A., Abd EL-Mageed, A. M., Niedbała, G., Sabrey, S. A., Fouad, A. S., Kapiel, T., Piekutowska, M., Mahmoud, S. A. (2022). 'Genetic characterization and agronomic evaluation of drought tolerance in ten Egyptian wheat (*Triticum aestivum* L.)', *Cultivars Agronomy*, 12, 1217. <https://doi.org/10.3390/agronomy12051217>.
- FAOSTAT. (2020). *'Food & Agriculture Organization of the United Nations Statistics Division'*, Rome. Italy.
<http://www.fao.org/faostat/en/#data>
- Farouk, S., Arafa, Sally A., Nassar, Rania M.A. (2018). 'Improving drought tolerance in corn (*Zea mays* L.) by foliar application with salicylic acid', *Int. J. Environ*, 7(3), pp. 104-123.
- Farshadfar, E., Mohammad, M., Seyed, M. (2013). 'Assessment of drought tolerance in land races of bread wheat based on resistance/tolerance indices', *Inter. J. Adv. Biol. and Biom. Res.*, 1(2), pp. 143-158.
- Fernandez, G. (1992). *'Effective selection criteria for assessing plant stress tolerance'*, In: Proceedings of the International Symposium on Adaptation of Vegetables and other Food Crops in Temperature and Water Stress, Taiwan 13-16 August 1992, pp. 257-270.
- Gabr, Afaf A.I., Abdalla, T.A.E., Abd El-latif, M.S. (2018). 'Evaluation of eight white Maize inbred lines and tier diallel crosses to study the variation in response to deficit water', *Archive of Agri. sci. J.*, Vol.(1) No.(2), pp. 79-90.
- Gazal A., Dar, Z.A., Lone, A.A., Shikari, A.B., Habib, M. (2016). 'Genetic Diversity of Maize (*Zea mays* L.) Genotypes Assessed by SSR Markers under Temperate Conditions', *Vegetos*, 29, 3 DOI: 10.5958/2229-4473.2016.00068.9
- Gazal, A., Nehvi, F.A., Lone, A. A., Dar, Z. A. (2018). 'Morphological and molecular characterization of maize inbred lines showing variability for drought tolerance', *Genetics and Molecular Research*, 17 (2), gmr16039903
- Gomaa M.A., Rehab, I.F., Salama, F. A., AL-Deeb, A.S.M. (2017). 'Water-Stress in Relation to Maize (*Zea mays* L.) Grain Yield, Plant Height and Proline Content', *Alex. J. Agric. Sci.*, Vol. 62, No.(3), pp. 311-317.
- Grzesiak, M.T., Marcinska, I., Janowiak, F., Rzepka, A., Hura, T. (2012). 'The relationship between seedling growth and grain yield under drought conditions in maize and triticale genotypes', *Acta Physiologiae Plantarum*, 34, pp. 1757-1764.
- Gupta, N.K., Gupta, S., Kumar, A. (2001). 'Effect of water stress on physiological attributes and their relationship with growth and yield in wheat cultivars at different growth stages', *Journal of Agronomy and Crop Science*, 186, pp. 55-62.
<http://dx.doi.org/10.1046/j.1439-037x.2001.00457.x>
- Habliza, A.A., Abdelhalim, A.K. (2017). 'Performance of ten maize hybrids under water stress and calcareous soil conditions', *J. Soil Sci. and Agric. Eng., Mansoura Univ.*, 8(2), pp. 41-48.

- Hategekimana, P., Thobunluepop, P., Saorobol, E., Sarobol, N. (2018). 'Evaluation the adaptability of different corn cultivars under drought stress at different growth stages', *J. Agron.*, 17(4), pp. 224-233.
- Henry, R.J. (2001). *'Plant genotyping: the DNA fingerprinting of plants'*, CABI.
- Hongbo, Q., Wei, D.B., Hua, P.Z. (2011). 'Genetic diversity analysis based on SSRs markers for major maize inbred lines in Guizhou', *Acta Agriculturae Zhejiangensis*, 23 (4), pp. 667-670.
- Kamara, M. M., Rehan, M., Ibrahim, K. M., Alsohim, A. S., Elsharkawy, M. M., Kheir, A. M. S., Hafez, E. M., El-Esawi, M. A. (2020). 'Genetic Diversity and Combining Ability of White Maize Inbred Lines under Different Plant Densities', *Plants*, 9(9), 1140. <https://doi.org/10.3390/plants9091140>
- Khaled, A. G. A., EL-Sherbeny, G. A. R., Elsayed, H. M. A. (2013). 'genetic relationships among some maize (*Zea mays* L.) genotypes on the basis of gene action and RAPD markers under drought stress Egypt', *J. Genet. Cytol.*, 42, pp. 73-88.
- Khaled, A.G.A, Elameen, T.M., Ahmed, A.Y.M., Mohiy, M., Elshazly, I.F.O. (2021). 'SRAP Molecular Markers Linked to Three Morphological Traits in Egyptian Bread Wheat (*Triticum aestivum* L.)', *SVU-International Journal of Agricultural Sciences*, 3(3), pp. 145-158. doi: 10.21608/svuijas.2021.78975.1113
- Król, A. (2013). *'The Growth and Water Uptake by Yellow Seed and Black Seed Rape Depending on the State of Soil Compaction'*, Ph.D. Thesis, Bohdan Dobrzański, Institute of Agrophysics PAS, Lublin, Poland.
- Li, Y., Tao, H., Zhang, B., Huang, S., Wang, P. (2018). 'Timing of water deficit limits maize kernel setting in association with changes in the source-flow-sink relationship', *Frontiers in Plant Science*, 9, pp. 1-11.
- Mdluli S. Y., Shimelis, H., Amelework, A. B. (2020). 'Genetic diversity and population structure of elite drought tolerant bread wheat (*Triticum aestivum* L.) genotypes', *AJCS.*, 14(09), pp. 1362-1371 (2020) ISSN:1835-2707 doi: 10.21475/ajcs.20.14.09.p1943.
- Mohammed, H.M., Adam, H.S., Idris, S.E., Muhieldeen, O.A. (2017). 'Effects of skipping one irrigation at different growth stages on yield and water productivity of some maize (*Zea mays* L.) cultivars under heavy clay soils of central Sudan', *Gezira Journal of Agricultural Science*, 15(1), pp. 93-107.
- Munns, R., James, R.A., Sirault, X., Furbank, R.T., Jones, H.G. (2010). 'New phenotyping methods for screening wheat and barley for water stress tolerance', *Journal of Experimental Botany*, (61), pp. 3499-3507.
- Nefzaoui, M., Udupa, S.M., Ghabi, M.S., Bouhadida, M., Iraqi, D. (2014). 'Molecular diversity of Tunisian durum wheat accessions based on microsatellite marker analysis', *Rom. Agric. Res.*, 31, pp. 33-39.
- Nei, M., Li, W. H. (1979). *'Proc. Natl. Acad. Sci. USA.*, 76, pp. 5269-5273.
- Nigem, S. A. (1989). 'Varietal response to nitrogen fertilization in maize', *J. Appl. Sci.*, 4, pp. 127 - 139.
- Pandit M., Chakraborty, M. Z., A. Pande, Haider, Sah, A. R. P., Sourav, K. (2016). 'Genetic diversity assay of maize (*Zea mays* L.) inbreds based on morphometric traits and SSR markers', *Afr. J. Agric. Res.*, Vol. 11(24), pp. 2118-2128, 16 June, 2016 DOI: 10.5897/AJAR2015.10404
- Parchin, R., Abdollah, N., Farshadfar, E. (2013). 'Assessment of drought tolerance in genotypes of wheat by multivariate analysis', *World Applied Sciences Journal*, 22(4), pp. 594-600.
- Piyusha, S., Singh. N. K. (2018). 'SSR Molecular Marker are efficient tools for finding Genetic Diversity in Bread Wheat', *International Journal of Current Microbiology and Applied Sciences*, 12, pp. 1098-1105.
- Ranatunga, M.A.B., Meenakshisundaram, P., Arumugachamy, S., Maheswaran, M. (2009). 'Genetic diversity analysis of maize (*Zea mays* L.) inbreds determined with morphometric traits and simple sequence repeat markers', *Maydica*, 54, pp. 113-123.
- Rosille, A.A., Hamblin, J. (1981). 'Theoretical aspects of selection for yield in stress and nonstress environments', *Crop Science*, 21 (6), pp. 943-946.
- Roy, E., Sunarti, Y. M. Y., Farid, M., Rahim, M.D., Azrai1, M. (2015). 'Selection of Homozygosity and Genetic Diversity of Maize Inbred using Simple Sequence

- Repeats (SSRs) Marker', *Int. J. Curr. Res. Biosci. Plant Biol.*, 2(3), pp. 19-28.
- Sah, R. P., Chakraborty, M., Prasad, K., Pandit, M., Tudu, V. K., Chakravarty, M. K., Narayan, S. C., Rana, M., Moharana, D. (2020). 'Impact of water deficit stress in maize: Phenology and yield components', *Scientific reports*, 10(1), pp. 1–15. <https://doi.org/10.1038/s41598-020-59689-7>
- Schonfeld, M. A., Johnson, R. C., Carver, B. F., Mornhinweg, D. W. (1988). 'Water relations in winter wheat as drought resistance indicators', *Crop. Sci.*, 28, pp. 536-541.
- Semagn, K. A., Bjørnstad, A., Ndjiondjop, M.N. (2006). 'Principles, requirements and prospects of genetic mapping in plants', *African J. of Biotech*, 5, pp. 2569-2587
- Siddique, M., Hamid, A., Islam, M. (2000). 'Drought stress effects on water relations of wheat', *Bot. Bull. Acad. Sin.*, 41, pp. 35-39.
- Sinclair, T., Ludlow, M. (1985). 'Who taught plants thermodynamics? The unfulfilled potential of plant water potential', *Aust. J. Plant Physiol.*, 12: 213-217
- Soltani, A. A., Waismoradi, M., Heidari, Rahmati, H. (2013). 'Effect of water stress and nitrogen on yield and compatibility metabolites on two medium maturity corn cultivars', *International Journal of Agriculture and Crop Sciences*, 5(7), pp. 737-740.
- Sserumaga, J.P., Makumbi, D., Ji, H., Njoroge, K., Muthomi, J.W., Chemining'wa, G.N., Si-Myung, L., Asea, G., Kim, H. (2014). 'Molecular characterization of tropical maize inbred lines using microsatellite DNA markers', *Maydica*, 59, pp. 267-274.
- Stoll, M., Jones (2007). 'Thermal imaging as a viable tool for monitoring plant stress', *J. Int. Sci. Vigne Vin*, Vol. 41 No. 2, pp. 77-84
- Walter, A., Studer, B., Kölliker, R. (2012). 'Advanced phenotyping offers opportunities for improved breeding of forage and turf species', *Annals of Botany*, 110, pp. 1271–1279.
- Wattier, R., Engel, C., Saumitou-Laprade, P., Valero, M. (1998). 'Short allele dominance as a source of heterozygote deficiency at microsatellite loci: Experimental evidence at the dinucleotide locus Gv1CT in *Gracilaria gracilis* (Rhodophyta)', *Molecular Ecology*, 7, pp. 1569-1573.
- Wilcox, J., Makowski, D. (2014). 'A Meta-Analysis of the Predicted Effects of Climate Change on Wheat Yields Using Simulation Studies', *Field Crops Research*, 156, pp. 180-190. <http://dx.doi.org/10.1016/j.fcr.2013.11.008>
- Yadav, V.K., Singh, I.S. (2010). 'Comparative evaluation of maize inbred lines (*Zea mays* L.) according to DUS testing using morphological, physiological and molecular markers', *Agric. Sci.*, 1(3), pp. 131-142.
- Ying, Z., Gang, T., Hui, H.Y., Xiang, L.Y., Fang, Z.Y., Yi, Z. (2011), 'Genetic relationship analysis of 21 maize germplasm in Guizhou by Simple Sequence Repeat markers', *Guizhou Agricultural Sciences*, (5), pp. 15-19.
- Younis, A., Ramzan, F., Ramzan, Y., Zulfiqar, F., Ahsan, M., Lim, K. B. (2020). 'Molecular Markers Improve Abiotic Stress Tolerance in Crops', *Plants*, 9, 1374; doi:10.3390/plants9101374.
- Younis, A., Riaz, A., Qasim, M., Mansoor, F., Zulfiqar, F., Tariq, U., Bhatti, Z.M. (2017). 'Screening of marigold (*Tagetes erecta* L.) cultivars for drought stress based on vegetative and physiological characteristics', *Int. J. Food Allied Sci.*, 3, pp. 56–63.
- Zhu, J.K. (2016). 'Abiotic stress signaling and responses in plants', *Cell*, 167(2), pp. 313–324. <https://doi.org/10.1016/j.cell.2016.08.029>
- Zlatev, Z., Lidon, F.C. (2012). 'An overview on drought induced changes in plant growth, water relations and photosynthesis', *Emir. J. Food Agric.*, 24, pp. 57–72.