

OPEN ACCESS

Medicinal Chemistry

Review Article

## Apoptosis in cancer: from pathogenesis to discovery of advanced selective Bcl-2 family Inhibitors

Sama W. Helmy<sup>a\*</sup>, Nermin Samir<sup>a</sup>, Deena S. Lasheen<sup>a</sup>, Dalal A. Abou El Ella<sup>ab</sup>

<sup>a</sup>Pharmaceutical Chemistry Department, Faculty of Pharmacy, Ain Shams University, Abbassia, Cairo11566, Egypt

<sup>b</sup>Pharmaceutical Chemistry Department, Faculty of Pharmacy, El-Nahda University, Beni sweif, Egypt

### ABSTRACT

Cancer is a genetic disease characterized by two features: unregulated cell growth and tissue invasion (metastasis). It can be viewed as the result of a succession of genetic changes during which a normal cell is transformed into a malignant one. Evasion of cell death, apoptosis, is one of the essential changes in a cell that cause this malignant transformation. Hence, reduced apoptosis or its resistance plays a vital role in carcinogenesis. The Bcl-2 family of proteins regulates the mitochondrial apoptotic pathway. Disease states arise upon deregulation of the Bcl-2 family of proteins, where cell death is either promoted or evaded; one of the most common tactic cancer cells utilize to promote survival is anti-apoptotic protein overexpression. Specifically, Bcl-2 overexpression has been shown to be a major chemoresistance factor in a number of human cancers, and for this reason, Bcl-2 targeting is a pharmacologic priority in the quest to reactivate cell death for therapeutic benefit in cancer.

**Keywords:** Apoptosis; Bcl-2; Extrinsic pathway; Intrinsic pathway; Caspase; BH3.

\*Correspondence | Sama W. Helmy, Pharmaceutical Chemistry Department, Faculty of Pharmacy, Ain Shams University, Abbassia, Cairo11566, Egypt.

Email: [samaa.helmy@pharma.asu.edu.eg](mailto:samaa.helmy@pharma.asu.edu.eg)

**Citation** | Helmy SW, Samir N, Lasheen DS, Abou El Ella D A. 2019. Apoptosis in cancer: from pathogenesis to discovery of advanced selective Bcl-2 family inhibitors. Arch Pharm Sci ASU 3(1): 37-54

**DOI:** [10.21608/aps.2019.20225](https://doi.org/10.21608/aps.2019.20225)

**Online ISSN:** 2356-8380. **Print ISSN:** 2356-8399.

**Received** 06 April 2019. **Accepted** 09 March 2019.

**Copyright:** ©2019 Helmy et al. This is an open-access article licensed under a Creative Commons Attribution 4.0 International License (CC BY 4.0), which permits unrestricted use, distribution, and reproduction in any medium, provided the original author(s) and source are credited

**Published by:** Ain Shams University, Faculty of Pharmacy

### 1. INTRODUCTION

Cancer is a genetic disease characterized by two main features: unregulated cell growth and tissue invasion/metastasis. The malignant phenotype requires mutations in several genes that regulate cell proliferation, motility, survival, DNA repair, invasion, and angiogenesis. The normal cell has protective mechanisms that can repair any damage occurs during DNA synthesis or in response to environmental mutagens which are usually abnormal in cancer cells. Too much damage to a normal cell activates a suicide pathway to prevent the damage of the organ. Such a pathway is usually altered in cancer cells,

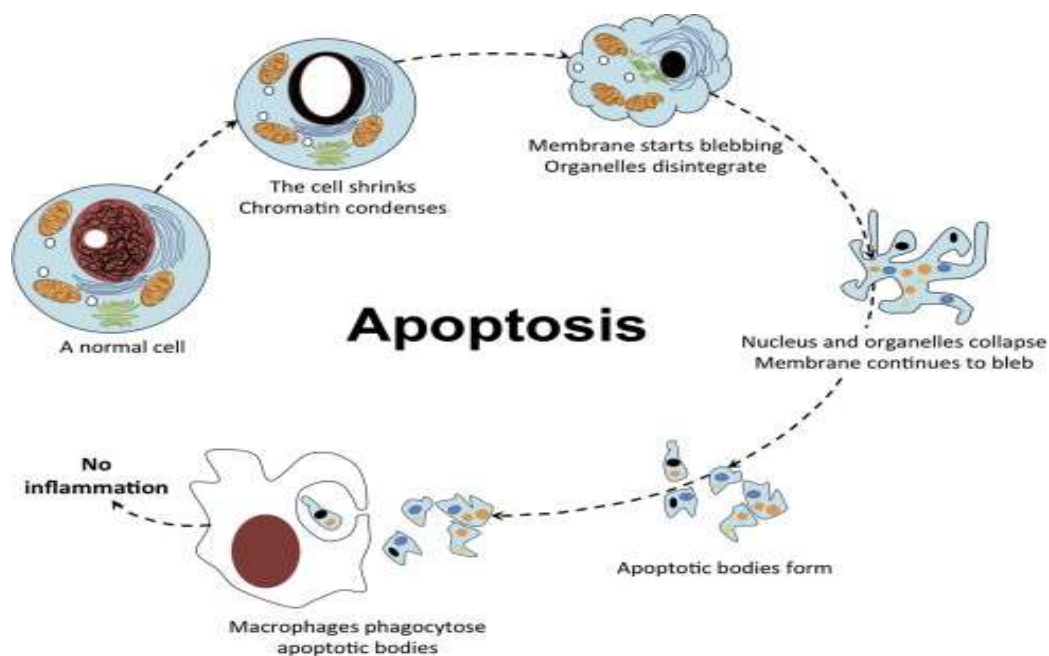
leading to the survival of the damaged cells that normally die. The novel phenotypic characteristics include those that facilitate invasion and metastasis [1].

### 2. Apoptosis

The term apoptosis comes from Greek words and refers to the falling of leaves from trees in autumn. It is used to describe the situation in which a cell actively pursues a course toward death upon receiving certain stimuli [2]. Being a crucial process, apoptosis is important in both physiological and pathological conditions (Table 1) [3, 4].

**Table 2:** Conditions involving apoptosis

| Physiological Conditions   |
|--|
| Programmed cell destruction in embryonic development for the purpose of sculpting of tissue    |
| Physiologic involution such as shedding of the endometrium, regression of the lactating breast |
| Normal destruction of cells accompanied by replacement proliferation as in the gut epithelium  |
| Involution of the thymus in early age  |
| Pathological Conditions  |
| Anticancer drug induced cell death in tumors   |
| Progressive cell death and depletion of CD4+ cells in AIDs                                     |
| Some forms of virus-induced cell death, such as hepatitis B or C                               |
| Cell death due to injurious agents like radiation, hypoxia, and mild thermal injury            |
| Cell death in degenerative diseases such as Alzheimer's disease                                |
| Cell death that occurs in heart diseases such as myocardial infarction                         |

**Fig. 1:** Stages of apoptotic cell death [5]

The different stages of apoptotic cell death start by cellular shrinkage and chromatin condensation, concomitant with the formation of membrane blebs. Organelles, nucleus fragment, and the blebs begin formation of apoptotic bodies, which are eventually engulfed by macrophages or neighboring cells by endocytosis/phagocytosis. The lack of release of cellular components to the extracellular results in absence of inflammation (**Fig. 1**) [5].

## **2.1. Biochemical changes in apoptosis**

In apoptosis, three types of biochemical changes are observed 1) activation of caspases, 2) breakdown of DNA and protein, and 3) membrane changes and recognition by phagocytic cells [6]. Early in apoptosis, there is an expression of phosphatidylserine (PS) in the outer layers of the cell membrane, which has been flipped out from the inner layers. This allows early recognition of dead cells by macrophages, resulting in phagocytosis without the release of proinflammatory cellular components [7]. This is followed by a characteristic breakdown of DNA into large 50 to 300 kilobase pieces [8]. Later, there is internucleosomal cleavage of DNA into oligonucleosome in multiples of 180 to 200 base pairs by endonucleases. Another specific feature of apoptosis is the activation of a group of enzymes belonging to the cysteine protease family named caspases. The "c" of "caspase" refers to a cysteine protease, while the "aspase" refers to the enzyme's unique property to cleave after aspartic acid residues [8]. Activated caspases cleave many vital cellular proteins and break up the nuclear scaffold and cytoskeleton. They also activate DNAase, which further degrade nuclear DNA [9].

## **2.2. Mechanisms of apoptosis**

Understanding the mechanisms of apoptosis is crucial and helps in the understanding of the

pathogenesis of conditions because of disordered apoptosis. This, in turn, may help in the development of drugs that target certain apoptotic pathways. Caspases are central to the mechanism of apoptosis as they are both the initiators and executioners. There are three pathways by which caspases can be activated. The two initiation pathways are the intrinsic and extrinsic pathways of apoptosis (**Fig. 2**) [10]. Both pathways lead to a common pathway or the execution phase of apoptosis.

### **2.1.1. The extrinsic death receptor pathway**

Begins when death ligands bind to a death receptor. These death receptors have an intracellular death domain that recruits adaptor proteins such as TNF receptor-associated death domain (TRADD) and Fas-associated death domain (FADD), as well as cysteine proteases like caspase 8 [11]. Binding of the death ligand to the death receptor results in the formation of a binding site for an adaptor protein and the whole ligand-receptor-adaptor protein complex is known as the death-inducing signaling complex (DISC). DISC then initiates the assembly and activation of pro-caspase 8. The activated form of the enzyme, caspase 8 is an initiator caspase, which initiates apoptosis by cleaving other executioner caspases [12].

### **2.1.2. The intrinsic mitochondrial pathway**

As its name implies, it is initiated inside the cell and triggered by internal stimuli such as irreparable of cytosolic  $\text{Ca}^{2+}$  and severe oxidative stress [12]. As a result, increased mitochondrial permeability and the release of pro-apoptotic molecules such as cytochrome-c into the cytoplasm take place [13]. Other apoptotic factors that are released from the mitochondrial intermembrane space into the cytoplasm include apoptosis-inducing factor (AIF), a second mitochondria-derived activator of caspase (Smac), direct IAP Binding protein with low pI

(DIABLO) and Omi/high-temperature requirement protein A (HtrA2). The cytoplasmic release of cytochrome-c activates caspase 3 via the formation of a complex known as apoptosome, which is made up of cytochrome-c, Apaf-1, and caspase 9 [14]. On the other hand, Smac/DIABLO or Omi/HtrA2 promotes caspase activation by binding to inhibitor of apoptosis proteins (IAPs) which subsequently leads to disruption in the interaction of IAPs with caspase-3 or -9 [15]. This pathway is closely regulated by a group of proteins belonging to the BCL-2 family, named after the BCL-2 gene originally noticed at the chromosomal breakpoint of the translocation of chromosome 18 to 14 in

follicular non-Hodgkin lymphoma [16]. There are two main groups of the BCL-2 proteins, namely:

The pro-apoptotic proteins (e.g. Bax, Bak, Bad, BCL-Xs, Bid, Bik, Bim, and Hrk) and

The anti-apoptotic proteins (e.g. BCL-2, BCL-XI, BCL-W, Bfl-1 and Mcl-1).

While the anti-apoptotic proteins regulate apoptosis by blocking the mitochondrial release of cytochrome-c, the pro-apoptotic proteins act by promoting such release. It is not the absolute quantity but rather the balance between the pro- and anti-apoptotic proteins that determine whether apoptosis would be initiated or not [17].

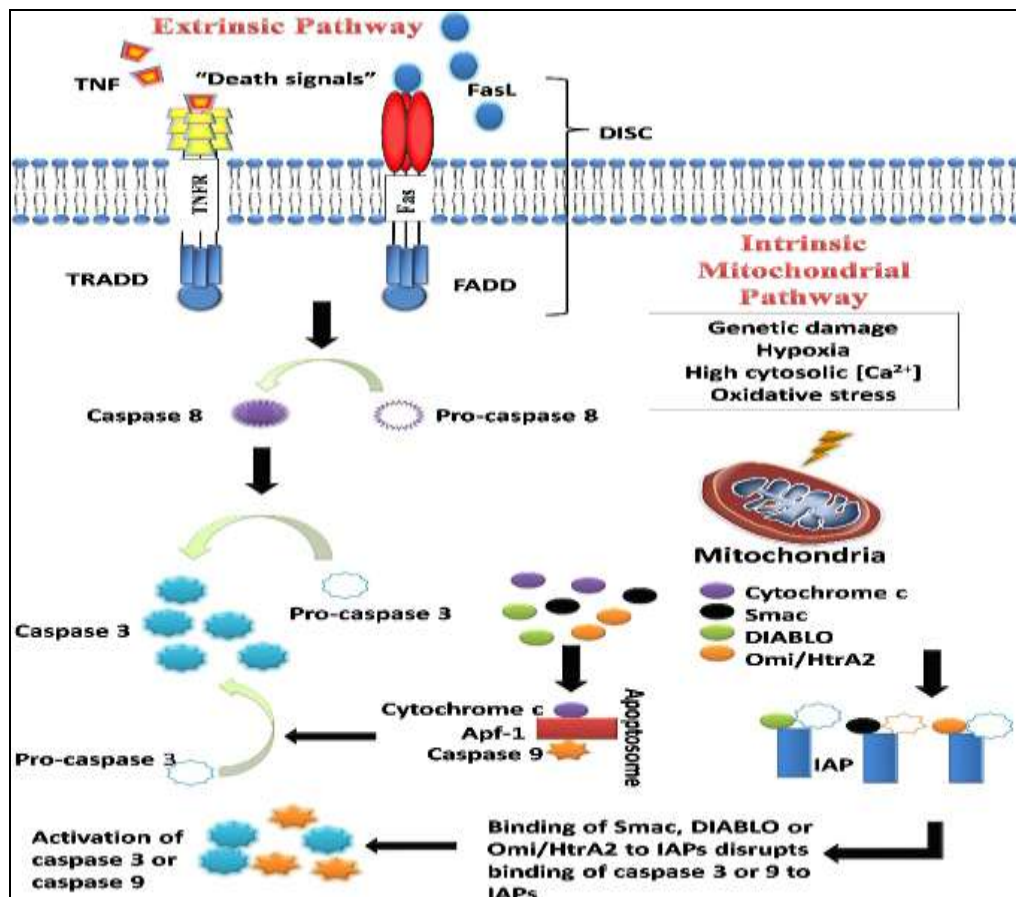


Fig. 2: The intrinsic and extrinsic pathways of apoptosis [10]

### 2.1.3. The common pathway

The execution phase of apoptosis involves the activation of a series of caspases. The upstream caspase for the intrinsic pathway is caspase 9 while that of the extrinsic pathway is caspase 8. The intrinsic and extrinsic pathways converge to caspase 3. Caspase 3 then cleaves the inhibitor of the caspase-activated deoxyribonuclease, which results in nuclear apoptosis. In addition, downstream caspases induce cleavage of protein kinases, cytoskeletal proteins, DNA repair proteins, and inhibitory subunits of endonucleases family. They also have an effect on the cytoskeleton, cell, and signaling pathways,

which together contribute to the typical morphological changes in apoptosis [18].

### 3. Apoptosis and carcinogenesis

Cancer can be viewed as the result of a succession of genetic changes during which a normal cell is transformed into a malignant one while evasion of cell death is one of the essential changes in a cell that cause this malignant transformation [19]. Hence, reduced apoptosis or its resistance plays a vital role in carcinogenesis. There are many ways a malignant cell can acquire reduction in apoptosis or apoptosis resistance (Fig. 3) [20].

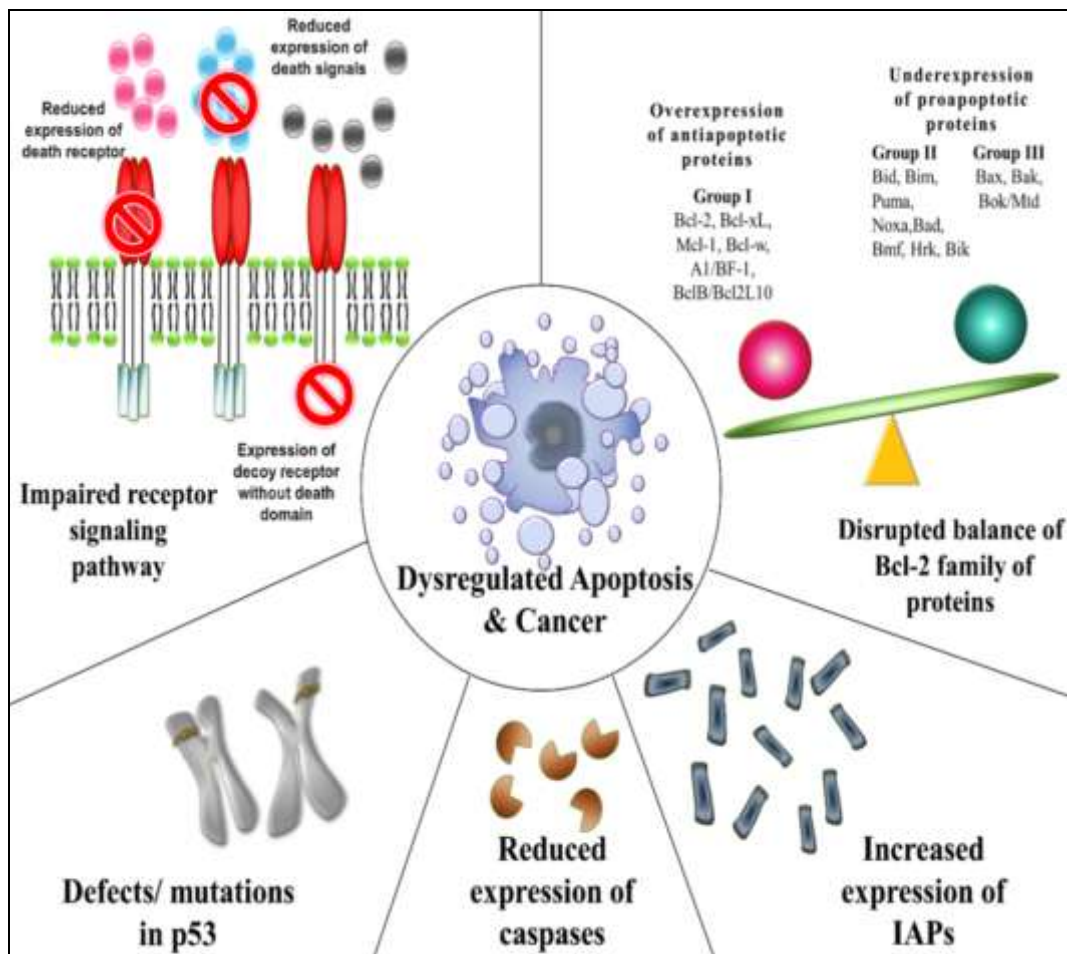


Fig. 3: Mechanisms contributing to evasion of apoptosis and carcinogenesis [20]



### 3.1. Impaired death receptor signaling

As mentioned before, death receptors and ligands of the death receptors are key regulators of the extrinsic pathway. These receptors possess a death domain and when triggered by a death signal, a number of molecules are attracted to the death domain, resulting in the activation of a signaling cascade. However, death ligands can also bind to decoy death receptors that do not possess a death domain, hence they fail to form signaling complexes and initiate the signaling cascade. Several abnormalities in the death signaling pathways that can lead to evasion of the extrinsic pathway of apoptosis have been observed. Such abnormalities include downregulation of the receptor or impairment of receptor function regardless of the mechanism or type of defects, as well as a reduced level in the death signals, all of which contribute to impaired signaling and hence a reduction of apoptosis [21].

### 3.2. Defects/Mutations in the p53 protein

The p53 protein also called tumor protein 53 (or TP 53), is one of the best-known tumor suppressor proteins encoded by the tumor suppressor gene TP53 located at the short arm of chromosome 17. It is named after its molecular weight, i.e., 53 kDa [22]. Initially, it was found to be slightly oncogenic. It was later discovered that the oncogenic property was due to a p53 mutation, or what was later called a gain of oncogenic function [23]. It is not only involved in the induction of apoptosis but also it is a key player in cell cycle regulation, development, differentiation, gene amplification, DNA recombination, chromosomal segregation and cellular senescence [24] and is called the guardian of the genome [25].

### 3.3. Reduced caspases activity

The caspases can be broadly classified into two groups: 1) those related to caspase 1 (e.g.

caspase-1, -4, -5, -13, and -14) and are mainly involved in cytokine processing during inflammatory processes and 2) those that play a central role in apoptosis (e.g. caspase 2, 3, 6, 7, 8, 9 and 10). The second group can be further classified into:

- 1) Initiator caspases (e.g. caspase 2, 8, 9 and 10) which are primarily responsible for the initiation of the apoptotic pathway and
- 2) Effector caspases (caspase 3, 6 and 7) which are responsible in the actual cleavage of cellular components during apoptosis [26] (Fig. 4).

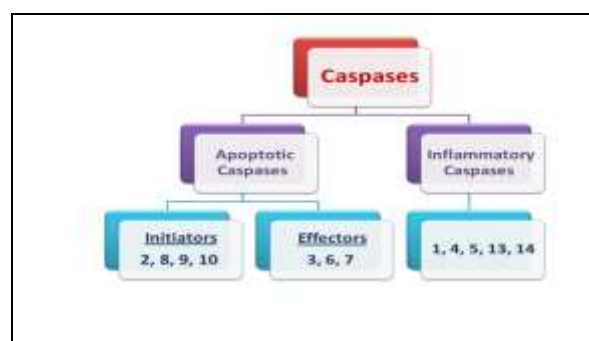


Fig. 4: Classification of caspases

Caspases remain one of the important players in the initiation and execution of apoptosis. It is, therefore, reasonable to believe that low levels of caspases or impairment in caspase function may lead to a decrease in apoptosis and carcinogenesis.

### 3.4. Increased expression of IAPs (inhibitor of apoptosis proteins)

The inhibitor of apoptosis proteins a group of structurally and functionally similar proteins that regulate apoptosis, cytokinesis and signal transduction. They are characterized by the presence of a baculovirus IAP repeat (BIR) protein domain [27]. IAPs are endogenous inhibitors of caspases and that inhibit caspase activity by binding their conserved BIR domains to the active sites of caspases, thus promoting

degradation of active caspases or keeping the caspases away from their substrates [28]. Thus, overexpression of the IAPs is considered one of the mechanisms by which cancer cells can evade apoptosis.

### 3.5. The disrupted balance of pro-apoptotic and anti-apoptotic proteins

Many proteins exert pro- or anti-apoptotic activity in the cell. It is not the absolute quantity but rather the ratio of these pro-and anti-apoptotic proteins that play a crucial role in the regulation of cell death. Moreover, over- or under-expression of certain genes, hence the corresponding regulatory proteins have been found to contribute to carcinogenesis by reducing apoptosis in cancer cells.

#### 3.5.1. The BCL-2 families of proteins

The Bcl-2 family of proteins is divided into proapoptotic and antiapoptotic proteins that play a pivotal role in the regulation of apoptosis, especially via the intrinsic pathway as they reside upstream of irreversible cellular damage and act mainly at the mitochondria level. Bcl-2 was the first protein of this family to be identified and the BCL-2 gene, which derives its name from B cell

lymphoma 2, encodes it the second member of a range of proteins found in human B cell lymphomas (14; 18) chromosomal translocation [29]. All the BCL-2 members are located on the outer mitochondria membrane. They are dimers are responsible for membrane permeability either in the form of an ion channel or through the creation of pores [30]. Based on their function and the BCL-2 homology (BH) domains, the BCL-2 family members are further divided into three groups [31] 1) the first group is the anti-apoptotic proteins that contain all four BH domains and they protect the cell from apoptotic stimuli. 2) The second group is made up of the BH-3 only proteins, so named because in comparison to the other members, they are restricted to the BH3 domain. In times of cellular stresses such as DNA damage, growth factor deprivation, and endoplasmic reticulum stress, the BH3-only proteins, which are initiators of apoptosis, are activated. Therefore, they are pro-apoptotic. 3) Members of the third group contain all four BH domains and they are pro-apoptotic (Fig. 5) [32].



Fig. 5: Members of Bcl-2 family of proteins [32]

### 3.5.2. Role of BCL-2 family in apoptosis

Both the anti-apoptotic and pro-apoptotic functions of BCL-2 family members are regulated through their BH domains. Furthermore, the BH1- BH3 domains of anti-apoptotic proteins form a hydrophobic binding pocket that binds the  $\alpha$ -helix of the BH3-only pro-apoptotic proteins [33].

In normal cells: Pro-apoptotic BH3-only proteins use their BH3 domain to inhibit anti-apoptotic BCL-2 proteins such as BCL-2, BCL-xL, and MCL-1 and activate pro-apoptotic BCL-2 proteins BAX and BAK [34]. When BH3-only proteins directly activate BAX and BAK, they use their BH3 domain to oligomerize and assemble mitochondria pores that induce mitochondria outer membrane permeabilization (MOMP) [35]. This MOMP induces the release of mitochondria intermembrane space proteins such as cytochrome c and second mitochondria-derived activator of caspases (SMAC) into the cytosol. While SMAC boosts apoptosis by blocking caspase inhibitor X-linked inhibitor of apoptosis protein (XIAP), cytochrome c promotes apoptosis by activating the caspase cascade. Cytochrome c interacts with the apoptotic protease activating factor 1 (APAF1), leading to the activation of caspase-9 and the apoptosome assembly. Activated caspase-9 activates caspase-3 and caspase-7, leading to apoptosis [36].

**In cancer cells:** There is a disruption in the balance between anti-apoptotic and a pro-apoptotic member of the BCL-2 family. This can be due to an overexpression of one or more anti-apoptotic proteins or an underexpression of one or more pro-apoptotic proteins or a combination of both. This imbalance results in sequestering the pro-apoptotic proteins by the anti-apoptotic ones, BAX, and BAK inactivation leading to dysregulated apoptosis (Fig. 6) [37].

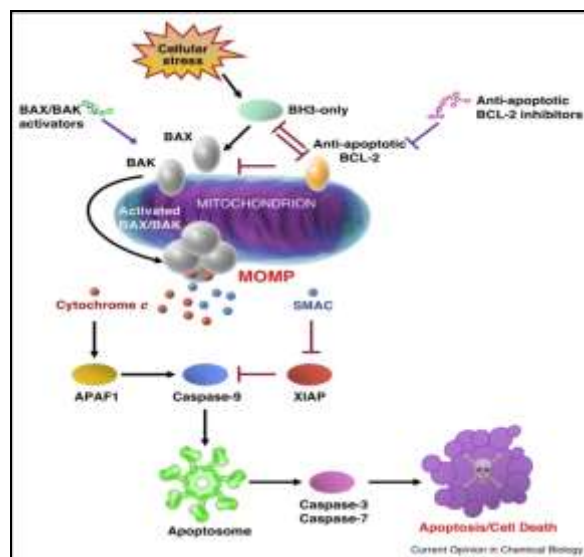


Fig. 6. Role of Bcl-2 family in apoptosis [37]

### 4. Targeting the BCL-2 family of proteins in cancer treatment

Like a double-edged sword, every defector abnormality along the apoptotic pathways may also be an interesting target of cancer treatment. Drugs or treatment strategies that can restore the apoptotic signaling pathways towards normality have the potential to eliminate cancer cells, which depend on these defects to stay alive. Many recent and important discoveries have opened new doors into potential new classes of anticancer drugs.

Therapeutic agents used in targeting the BCL-2 family of proteins can be divided into 1) molecules that affect gene or protein expression and 2) small molecules called BH3 mimetics, so named because they mimic the binding of the BH3-only proteins to the hydrophobic groove of anti-apoptotic proteins of the BCL-2 family. Early attempts focused on interfering with BCL-2 gene expression, thereby reducing the level of BCL-2 protein synthesized. Oblimersen (Genasense<sup>®</sup>, Genta<sup>®</sup>), an antisense oligonucleotide that binds to Bcl2 mRNA, thus interfering with its translation, was the first agent to enter clinical trials. It was considered to have significant



potentia during early development [38] but ultimately proved in Phase III studies to have insufficient clinical efficacy [39].

#### 4.1. BH3 mimetics of anti-apoptotic Bcl-2 proteins

The main strategy against Bcl-2 has been the development of BH3 mimetics (Fig. 7). They can promote apoptosis by releasing sequestered BH3-only proteins, BAX and BAK from anti-apoptotic Bcl-2 proteins [40].

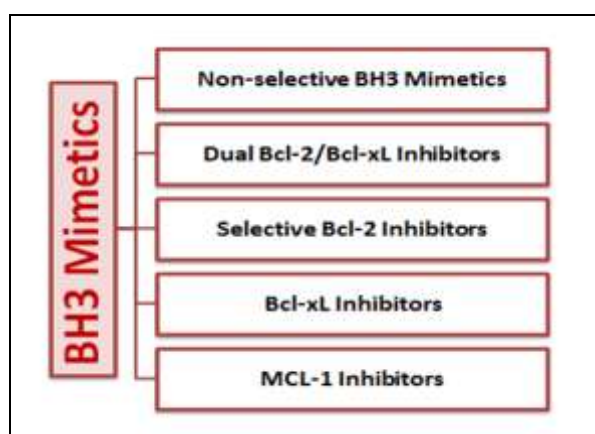
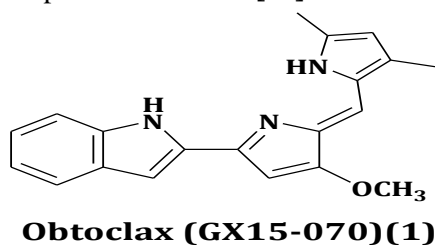


Fig. 7. Classes of BH3 mimetics

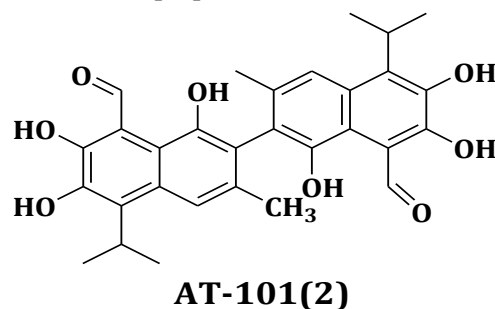
##### 4.1.1. Non-selective BH3 mimetics

The first generation of BH3 mimetics has limited selectivity for a specific anti-apoptotic Bcl-2 protein. Unfortunately, significant toxicities associated with off-target effects halt their further development [41].

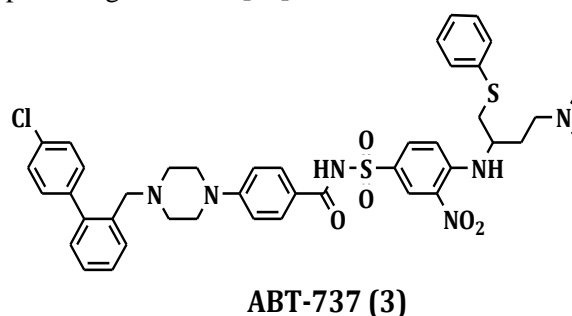
**Obatoclox (GX15-070) (1)** binds to Bcl-2, Bcl-XI, Bcl-W, and Mcl1. However, the response rates in clinical trials have been low and its development has ceased [42].



The natural product **Gossypol**, a polyphenolic aldehyde isolated from the cotton plant, and its synthetic derivative **AT-101 (2)** bind to Bcl-2, Bcl-XI, and Mcl1 [43]. As with obatoclox, these agents have demonstrated minimal activity in clinical trials [44].

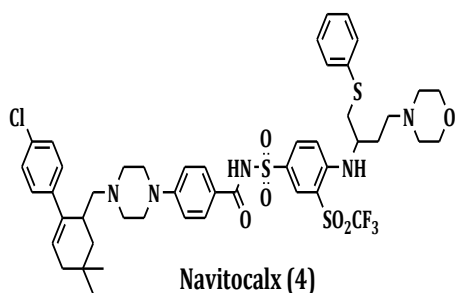


A breakthrough in the development of Bcl-2 inhibitors occurred when Abbott Laboratories discovered **ABT-737 (3)** using fragment-based drug design approach by NMR [45]. It inhibits Bcl-2, Bcl-XI, and Bcl-W with high affinity ( $K_i \leq 1$  nM). It was shown to exhibit cytotoxicity in lymphoma, small cell lung carcinoma cell line, primary patient-derived cells, and regression of established tumors in animal models with a high percentage of cures [46].



**Navitoclax (ABT-263) (4)** is a second generation, structurally related molecule that is orally available and has more favorable pharmacokinetics. It has an oral bioavailability of 20–50% and a half-life of 8.9 hours, making it suitable for once-daily dosing. Its specificity mirrors that of ABT-737, with a  $K_i$  of  $\leq 1$  nM against Bcl-2, Bcl-XI, and Bcl-W, and a  $K_i$  of 550 nM against Mcl-1. The dose limiting toxicity

of navitoclax was a dose-dependent reduction in platelet count (thrombocytopenia) [47].

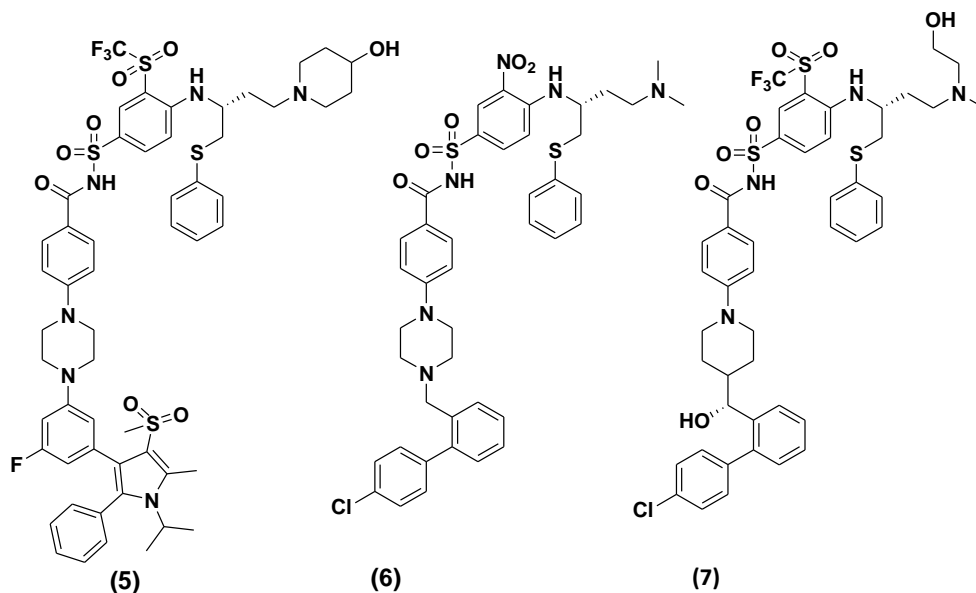


Since the disclosures of ABT-737 (3) and navitoclax (4), several inhibitors of BCl-2 and BCl-XI that contain the acylsulfonamide

pharmacophore or its isosteres have been reported. All those inhibitors are still at the preclinical level.

#### 4.1.2. Duane BCl-2/Bcl-XI inhibitors

Based on the success of ABT-737 (3) and navitoclax (4), several dual BCl-2/Bcl-XI inhibitors were developed using their arylsulfonamide scaffold. **BM-1197 (5)** [50], **S44564 (6)** [51] and **AZD4320 (7)** [52] are examples of dual inhibitors with subnanomolar affinity. They exert potent antitumor activity in small cell lung cancer cells. They also cause reversible platelet reduction in mice at highly efficacious doses.

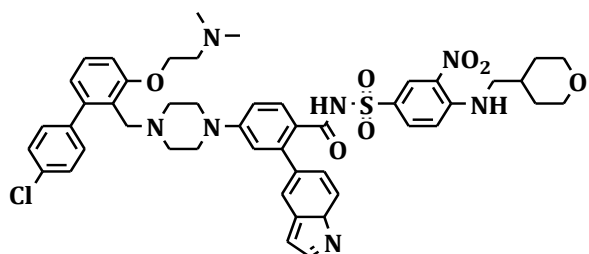


#### 4.1.3. Selective Bcl-2 inhibitors

Structure-based drug design based on Navitoclax (4) co-crystal structure with BCl-2 protein enabled tailoring new BH3 mimetics selective to BCl-2 protein only. Examples are shown in **table 2**.

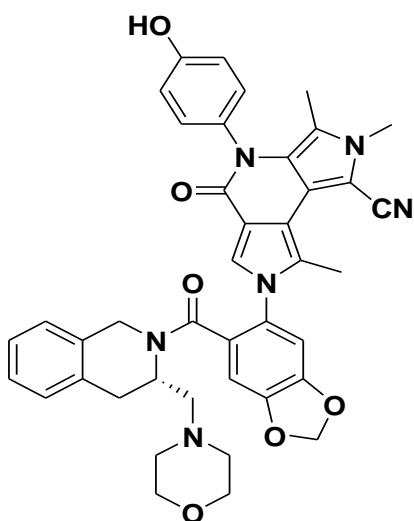
**Venetoclax (ABT-199) (8)** has demonstrated the most promising clinical results

of all the putative agents targeting BCl-2 to date. It is the result of reverse engineering of navitoclax to increase BCl-2 selectivity to avoid thrombocytopenia. Accordingly, venetoclax has subnanomolar affinity for BCl-2 ( $K_i < 0.01 \text{ nM}$ ), but significantly weaker binding to BCl-XI ( $K_i = 48 \text{ nM}$ ), BCl-W ( $K_i = 245 \text{ nM}$ ), and Mcl-1 ( $K_i > 444 \text{ nM}$ ) [53]. Venetoclax has adequate oral bioavailability and an estimated half-life of 26 hours [54].



**Venetoclax (8)**

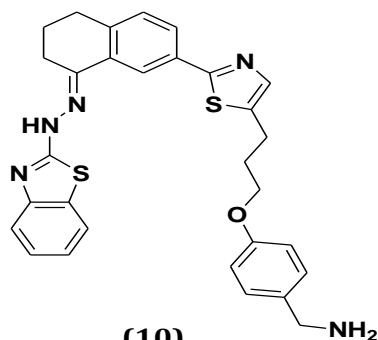
S55746 (9) is the second Bcl-2-selective inhibitor ( $K_i = 1.3$  nM) to enter clinical development. It is an orally compound is also known as BC1201 [55].



**S55746 (9)**

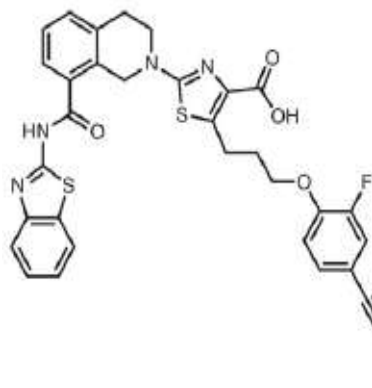
#### 4.1.4. Bcl-XI inhibitors

Structure-based guided medicinal chemistry focused on specific interactions with the P2 and P4 pockets to identify a chemical scaffold with selectivity for Bcl-XI. The first Bcl-XI is **WEHI-539 (10)**, an inhibitor with subnanomolar affinity for Bcl-XI ( $IC_{50} = 1.1$  nM). It promoted robust apoptosis induction in Bcl-XI dependent lung cancer cells; however, its poor physicochemical properties limit its activity in vivo [56].

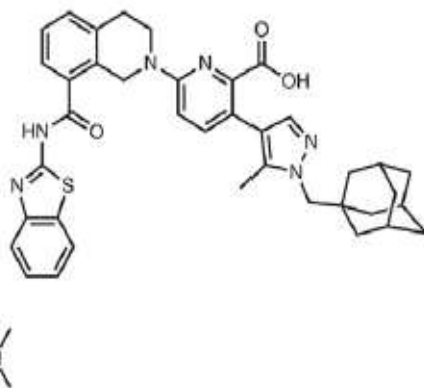


**(10)**

Optimization of compound (10) using a combination between NMR fragment screening and structure-based design led to the discovery of **A-1155463 (11)** [57] and **A-1331852 (12)** [58]. Compound (12) is the most potent and selective orally available Bcl-XI inhibitor ( $K_i = <0.010$  nM) reported with 10–50 fold improved cellular activity than (11) and (4).



**(11)**

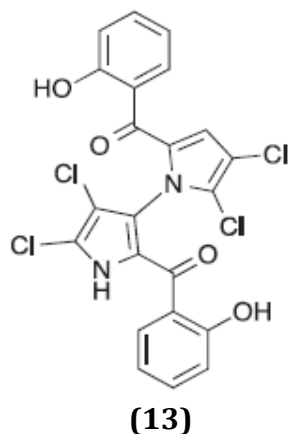


**(12)**

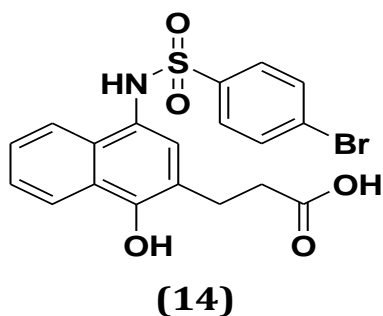
#### 4.1.5. MCl-1 inhibitors

The structure of MCl-1 suggested that its BH3 groove is particularly shallow in P1, P2, and P4 pockets compared to BCl-2 and BCl-XI [59]. Interestingly, it is suggested that BH3 binding to the P4 pocket is not as important as in BCl-2 and BCl-XI [60].

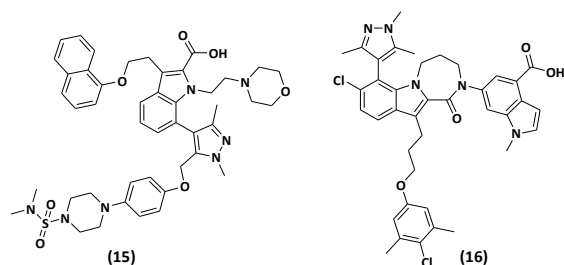
The natural product, **Maritoclax (13)**, is the first known MCl-1 inhibitor ( $IC_{50}=10.1 \mu\text{M}$ ) [61].



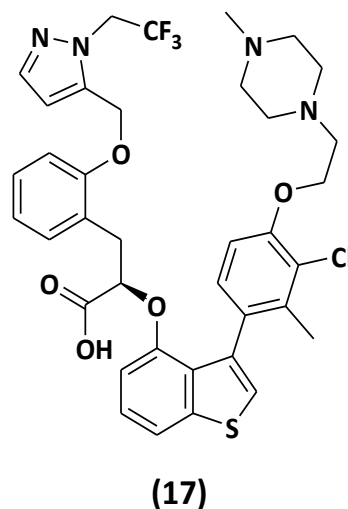
**UMI-77 (14)** was then identified through HTS and structure-based design (14) has moderate binding affinity ( $K_i = 490 \text{ nM}$ ) and selectivity for MCl-1 [62]. It induces apoptosis by disrupting MCl-1/ BAX and MCl-1/BAK complexes.



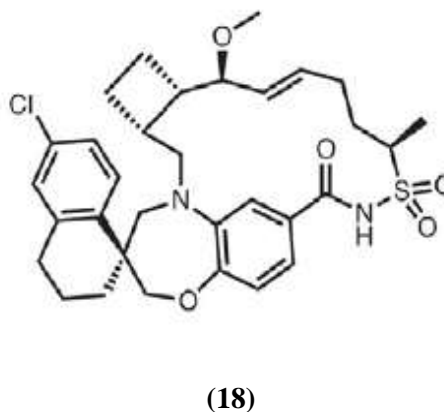
Another strategy was adopted to grow P2 bound hits from fragment-based NMR screens based on the 2-carboxy indole core. This approach led to larger P2-P4 binders such as **A-1210477 (15)** [63] and compound **(16)** [64], which exhibit subnanomolar affinity ( $K_i = 0.045 \text{ nM}$  and  $K_i = 0.05 \text{ nM}$  respectively).



**S6384 (17)** is recently reported with subnanomolar affinity to MCl-1 ( $K_i = 0.15 \text{ nM}$ ) and selectivity of 10000 fold over Bcl-2 and Bcl-xl [65].



**AMG176 (18)** is the first MCl-1 inhibitor to enter phase 1 trials for the treatment of relapsed and refractory multiple myeloma with subnanomolar affinity ( $K_i = 0.13 \text{ nM}$ ) [66].

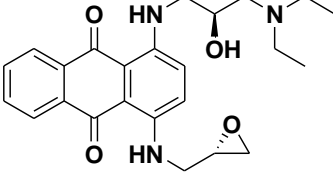
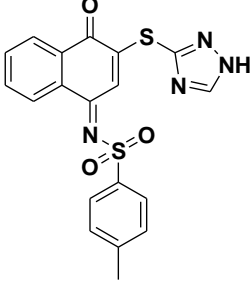
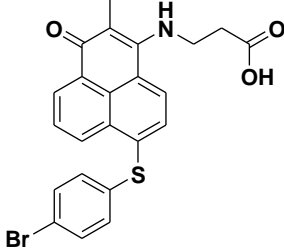
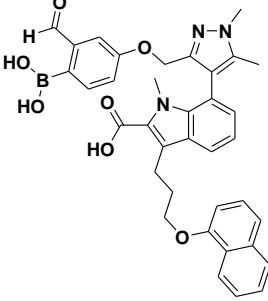


**Table 2.** Some Bcl-2 family protein inhibitors, their uses, and toxicities [48, 49]

| Name  | Type of Tumor  | Clinical Stage | Key Toxicities   |
|---|--|----------------|--|
| <b>Oblimersen Sodium</b><br><b>(Genasense®)</b> | Melanoma, multiple myeloma, chronic lymphocytic leukemia, Non-small cell lung cancer, hormone-refractory prostate cancer | Phase III      | Fatigue, IFTs elevation  |
| <b>Obatoclax (1)</b>                            | leukemia, lymphoma, unspecified childhood solid tumor  | Phase I        | Neurological including somnolence, dizziness, euphoric mood, and gait disturbance                |
| <b>Gossypol &amp; AT-101 (2)</b>                | Metastatic breast cancer and Advanced hematological cancers  | Phase I/II     | Fatigue, nausea, lymphopenia, diarrhea, hypophosphatemia, neutropenia and intestinal obstruction |
| <b>ABT-737 (3)</b>                              | Solid tumor, Chronic lymphocytic leukemia (CII)  | Phase II       | Thrombocytopenia, nausea, fatigue, elevated ALT and bronchitis                                   |
| <b>ABT-263 (Navitoclax®) (4)</b>                | Solid tumor, Chronic lymphocytic leukemia (CII)  | Phase I/II     | Thrombocytopenia, nausea, fatigue, elevated ALT and bronchitis                                   |



**Table 3.** Non-canonical modulators of anti-apoptotic Bcl-2 proteins

| Name                         | Structure   | Target                                  |
|------------------------------|---|---|
| <b>BDA-366 (19) [68]</b>     |    | Bcl-2 BH4 antagonist                    |
| <b>MAIM1 (20) [69]</b>       |    | Mcl-1 allosteric inhibitor              |
| <b>Compound 5 (21) [70]</b>  |  | Mcl-1 inhibitor/<br>degradation inducer |
| <b>Compound 11 (22) [71]</b> |  | Mcl-1 covalent inhibitor                |

#### 4.2. Non-canonical targeting of anti-apoptotic Bcl-2 proteins

Besides targeting the BH3 groove, additional mechanisms of Bcl-2 family protein interactions

have been investigated and molecule or protein-based probes have been identified to bind noncanonical surfaces. The success of this technique is attributed to the exploitation of

residues outside of the canonical BH3 groove unique to each anti-apoptotic protein and formed by  $\alpha 3$ – $\alpha 5$  regions. When these designed proteins were expressed in cells, they inhibited their corresponding BCL-2 protein providing unique cellular probes [67]. Examples are shown in **table 3**.

## 5. Conclusion

In summary, the development of BCL-2 inhibitors as potential anti-cancer agents represents a triumph of the rational scientific investigation. While initial attempts at BCL-2 family inhibition did not achieve the desired specificity and efficacy, rational drug design eventually yielded a viable approach with BH3 mimetics. The task now turns to discover new candidates with better activity and least toxicity. While many unanswered questions yet remain, the future of BCL-2 inhibition in cancer treatment is bright.

## Conflict of interest

The authors declare no conflict of interest.

## 6. References

1. Robert G, Fenton Dan I, Inigo. Harrison's hematology and oncology chapter 24: cancer cell biology and angiogenesis. 2010.
2. Kerr JF, Harmon BV. the incidence of apoptosis: a historical perspective. In Apoptosis: cell death. Volume 3. Edited by: Tomei ID, Cope FO. New York: Cold Spring Harbor Laboratory Press; 1991; 5-29.
3. Mohan H. Textbook of pathology. 5 edition. New Delhi: Jaypee Brothers Medical Publishers. 2010; 21-60.
4. Merkle CJ. Cellular adaptation, injury, and death. In pathophysiology: concepts of altered health states. Eight editions. Edited by: Porth CM, Matfin G. Philadelphia: Wolters Kluwer/Lippincott Williams and Wilkins. 2009; 94-111.

5. Abou-Ghali M, Stiban J. regulation of Ceramide Channel Formation and disassembly: Insights on the Initiation of Apoptosis. Saudi Journal of Biological Sciences. 2015.
6. Kumar V, Abbas AK, Fausto N, Aster JC. Robbins and Cotran: pathologic basis of disease. 8 edition. Philadelphia: Saunders Elsevier. 2010; 25-32.
7. Hengartner MO. Apoptosis: corralling the corpses. Cell. 2000; 104:325-328.
8. Vaux D, Silke J. mammalian mitochondrial IAP-binding proteins. Biochem Biophys Res Commun. 2003; 203:449-504.
9. Iavrik IN, Golks A, Krammer PH. Caspases: pharmacological manipulation of cell death. J Clin Invest. 2005; 115:2665-2672.
10. O'Brien MA, Kirby R. Apoptosis: disease. J Vet Emerg Crit Care. 2008; 18:572-585.
11. Schneider P, Tschopp J. Apoptosis induced by death receptors. Pharm Acta Helv. 2000; 74:281-286.
12. Karp G. Cell and molecular biology: Concepts and experiments. 5 edition. John New Jersey. Wiley and Sons. 2008; 653-657.
13. Danial NN, Korsmeyer SJ. Cell death: critical control points. Cell. 2004; 116(2):205-219.
14. Kroemer G, Galluzzi I, Brenner C. Mitochondrial membrane permeabilization in cell death. Physiol Rev. 2007; 87:99-163.
15. Lacasse EC, Mahoney DJ, Cheung HH, Pichette S, Baird S, Korneluk RG. IAP-targeted therapies for cancer. Oncogene. 2008; 27:6252-6275.
16. Tsujimoto Y, Finger IR, Yunis J, Nowell PC, Croce CM. The chromosome breakpoint of neoplastic B cell t(14; 18) chromosome translocation. Science 1984; 226:1097-1099.
17. Reed JC. BCL-2 family proteins: apoptosis and chemoresistance in hematologic malignancies. Semin Haematol. 1997; 34:9-19.
18. Ghobrial IM, Witzig TE, Adjei AA. Targeting in cancer therapy. CA Cancer J Clin. 2005; 55:178-194.
19. Hanahan D, Weinberg RA The hallmarks of cancer. Cell. 2000; 100:57-70.

20. Rebecca SY. Apoptosis in cancer: from pathogenesis to treatment. *Wong Journal of Experimental & Clinical Cancer Research*. 2011; 30:87.
21. lavrik I, Golks A, Krammer PH. Death receptor signaling. *J Cell Sci*. 2005; 118:265-267.
22. Levine AJ, Momand J, finlay CA. The p53 tumor suppressor gene. *Nature*. 1991; 351(6326):453-456.
23. Bai I, Zhu WG. p53: structure, function, and therapeutic applications. *J Cancer Mol*. 2006; 2:141-153.
24. Oren M, Rotter V. Introduction: p53—the first twenty years. *Cell Mol Life Sci*. 1999; 55:9 11.
25. Iane DP. p53, guardian of the genome. *Nature*. 1992; 358:15-16.
26. Fink SI, Cookson BT. Apoptosis, pyroptosis, and necrosis: eukaryotic cells. *Infect Immun*. 2005; 73:1907-1916.
27. Lacasse EC, Mahoney DJ, Cheung HH, Pichette S, Baird S, Korneluk RG. IAP-targeted therapies for cancer. *Oncogene*. 2008; 27:6252-6275.
28. Wei Y, Fan T, Yu M., and apoptosis. *Acta Biochim Biophys Sin*. 2008; 40:278-288.
29. Gross A, McDonnell JM, Korsmeyer SJ. BCl-2 family members and the mitochondria in apoptosis. *Genes Dev*. 1999; 13:1899-1911.
30. Minn AJ, Vélez P, Schendel SI, Liang H, Muchmore SW, Fesik SW, fill M, Thompson CB. BCl-x (I) ion channel in synthetic Lipid membranes. *Nature*. 1997; 385(6614):353-357.
31. Dawson G, Kluc RM. BCl-2 family-regulated apoptosis in health and disease. *Cell Health and Cytoskeleton*. 2010; 2:9-22.
32. Youle RJ, Strasser A. The BCl-2 protein family: opposing activities that mediate cell death. *Nat. Rev. Mol. Cell Biol*. 2008; 9:47-59.
33. Sattler M, Liang H, Nettesheim D, Meadows RP, Harlan JE, Eberstadt M. BCl-XI-Bak peptide complex: regulators of apoptosis. *Science*. 1997; 275 (5302):983-986.
34. Chen H-C, Kanai M, Inoue-Yamauchi A, Tu H-C, Huang Y, Ren D, Kim H, Takeda S, Reyna DE, Chan PM. Of cell death regulation by the BCl-2 family. *Nat Cell Biol*. 2015; 17:1270-1281.
35. Luna-Vargas MPA, Chipuk JE. physiological control of BAK, BAX, and beyond. *Trends Cell Biol*. 2016; 26:906-917.
36. Wei MC, Zong WX, Cheng EH, lindsten T, Panoutsakopoulou V, Ross AJ, Roth KA, MacGregor GR, Thompson CB, Korsmeyer SJ. Proapoptotic BAX and BAK: a dysfunction and death. *Science*. 2001; 292:727-730.
37. Thomas P, Andrea I, Denis ER, Adam Z, Evripidis G. Progress in targeting the BCl-2 family of proteins. *Current Opinion in chemical biology*. 2017; 39:133–142.
38. Kim R, Emi M, Matsuura K, Tanabe K. Antisense and nonantisense effects of anti-sentence-2 roles of BCl-2 cancer therapy. *CancerGene Ther*. 2007; 14:1-11.
39. O'Brien S, Moore JO, Boyd TE. 5-Year survival or refractory chronic lymphocytic Leukemia in a randomized, without oblimersen. *J Clin Oncol*. 2009; 27:5208-12.
40. Vogler M, Dinsdale D, Dyer, and Cohn GM. Review: BCl-2 inhibitors: with big cancer therapy. *Cell Death and Diff*. 2009; 16:360-367.
41. Nguyen M, Marcellus RC, Roulston A, Watson M, Serfass I, Murthy Madiraju SR, Goulet D, Viallet J, Be' lec I, Billiot X. Small molecule obatoclax (GX15-070) antagonizes MCl-1 and overcomes MCl-1-mediated resistance to apoptosis. *Proc Nati Acad Sci U S A*. 2007; 104:19512-19517.
42. Hwang JJ, Kuruvilla J, Mendelson D. Phase I studies of obatoclax (GX15-070), a small molecule pan-BCl-2 family antagonist, in patients with advanced solid tumorsorlymphoma. *Clin Cancer Res*. 2010; 16: 4038-45.
43. Pascuzzi I, Gonen M, Gardner JR. Targeting BCl-2 with the BH3 mimetic AT-101 markedly enhances the agents in vitro and in vivo models of B-cell lymphoma. *Blood*. 2008; 111:5350-eight.

44. Wang G, Nikolova-Coleska Z, Yang CY. Structure-based design of potent small-molecule inhibitors of anti-apoptotic BCL-2 proteins. *J Med Chem*. 2006; 49:6139-42.
45. Oltersdorf T, Elmore SW, Shoemaker AR. An inhibitor of BCL-2 induces regression of solid tumors. *Nature*. 2005; 435:677-681.
46. Oltersdorf T, Elmore SW, Shoemaker AR, Armstrong RC, Augeri DJ, Belli BA, Bruncko M, Deckwerth TL, Dinges J, Hajduk PJ, Joseph MK, Kitada S, Korsmeyer SJ, Kunzer AR, Itai A, Li C, Mitten MJ, Nettesheim DG, Ng S, Nimmer PM, O'Connor JM, Oleksijew A, Petros AM, Reed JC, Shen W, Tahir SK, Thompson CB, Tomaselli KJ, Wang B, Wendt MD, Zhang H, Fesik SW, Rosenberg SH. An inhibitor of BCL-2 of solid tumors. *Nature*. 2005; 435:677-681.
47. Tse C, Shoemaker AR, Adickes J. ABT-263. an orally bioavailable BCL-2 family inhibitor. *Cancer Res*. 2008; 68:3421-3428.
48. Wong. Apoptosis in cancer: from pathogenesis to treatment. *Journal of Experimental & Clinical Cancer Research*. 2011; 30:87.
49. Khan KH. Cancer Therapeutics: Targeting the apoptotic pathway. *Crit Rev Oncol/Hematol*. 2014.
50. Bai L, Chen J, McEachern D, Liu L, Zhou H, Aguilar A, Wang S. BM-1197: a novel and specific BCL-2/Bcl-XI long-lasting tumor regression in vivo. *PLoS ONE*. 2014; 9:e99404.
51. Nemat F, de Montrion C, Yang G, Kraus-Berthier I, Carita G, Sastre-Garau X, Bernard A, Vallerand D, Geneste O, de Pieter I. Targeting BCL-2/Bcl-XI patient-derived xenografts. *PLoS ONE*. 2014; 9:e80836.
52. The anti-apoptotic BCL-2 and BCL-XL treatment of cancer (AZD4320). 250th ACS Annual Meeting. 2015.
53. Souers AJ, Levenson JD, Boghaert ER. ABT-199, a potent and selective BCL-2 inhibitor, achieves antitumor activity while sparing patients. *Nat Med*. 2013; 19:202-208.
54. Salem AH, Agarwal S, Dunbar M. Low and High Fat Meals on the Pharmacokinetics of Venetoclax, a selective first-in-Class BCL-2 Inhibitor. *J Clin Pharmacol*. 2016.
55. Casara P, Davidson J, Cameron A, Ie Toumelin-Braizat G, Vogler M. S55746 novel orally active BCL-2 potent inhibitor that tumor growth. *Oncotarget, Impact journals*. 2018; 9:20075-20088.
56. Messene G, Czabotar PE, Sleebs BE, Zobel K, Lowes KN, Adams JM, Baell JB, Coleman PM, Deshayes K, Fairbrother WJ. Structure-guided design of a selective BCL-X (L) inhibitor. *Nat Chem Biol*. 2013; 9:390-397.
57. Tao Z-F, Hasvold I, Wang I, Wang X, Petros AM, Park CH, Boghaert ER, Catron ND, Chen J, Colman PM. Discovery of a potent and selective BCL-XL in vivo activity. *ACS Med Chem Lett*. 2014; 5:1088-1093.
58. Iverson JD, Phillips DC, Mitten MJ, Boghaert ER, Diaz D, Tahir SK, Belmont ID, Nimmer P, Xiao Y, Ma XM. exploiting selective BCL-2 to dissect cell survival dependencies and cancer therapy. *Sci Transl Med*. 2015; 7:279ra40.
59. Lee EF, Czabotar PE, Yang H, Sleebs BE, Messene G, Colman PM, Smith BJ, Fairlie WD. conformational changes in BCL-2 pro-survival their capacity to bind ligands. *J Biol Chem*. 2009; 284:30508-30517.
60. Fire E, Gulla SV, Grant RA, Keating AE. Mcl-1-Bim minor structural changes. *Protein Sci*. 2010; 19:507-519.
61. Doi K, Li R, Sung S-S, Wu H, Liu Y, Manieri W, Krishnegowda G, Awwad A, Dewey A, Liu X. Discovery of marinopyrrole A (navitoclax) as a selective Mcl-1 antagonist that overcomes ABT-737 and targeting Mcl-1 for proteasomal degradation. *J Biol Chem*. 2012; 287:10224-10235.
62. AbiWord F, Xiao C, Liu M, Azmi AS, Aboukameel A, Mady ASA, Gulappa T, Cierpicki T, Owens S, Zhang T. An inhibitor of mcl-1 and in vivo. *Mol Cancer Ther*. 2014; 13:565-575.
63. Levenson JD, Zhang H, Chen J, Tahir SK, Phillips DC, Xue J, Nimmer P, Jin S,

- Smith M, Xiao Y. Selective small-molecule Mcl-1 on-target cancer cell in combination with ABT-263 (navitoclax). *Cell Death Dis.* 2015; 6:e1590.
64. Lee T, Bian Z, Zhao B, Hogdal IJ, Sensintaffar JI, Goodwin CM, Belmar J, Shaw S, Tarr JC, Veerasamy N. biological characterization of potent myeloid cell leukemia-1 inhibitors. *FEBS Lett.* 2017; 591:240-251.
65. Kotschy A, Szlavik Z, Murray J, Davidson J, Maragno AI, le Toumelin-Braizat G, Chanrion M, Kelly GI, Gong J-N, Moujalled DM. The Mcl1 inhibitor S63845 is tolerable and diverse cancer models. *Nature.* 2016; 538:477-482.
66. characterization of AMG 176: a first-in-class Mcl-1 inhibitor in clinical multiple myeloma. *AACR Annual Meeting 2017.*
67. Berger S, Procko E, Margineantu D, Lee EF, Shen BW, Zetter A, Silva D-A, Chawla K, Herold MJ, Garnier J-M. high specificity the roles of Bcl2 in cancer. *Elife.* 2016; 5.
68. Han B, Park D, li R, Xie M, Owonikoko TK, Zhang G, Sica GI, Ding C, Zhou J, Magis AT. Small-molecule Bcl2 BH4 antagonist for lung cancer therapy. *Cancer Cell.* 2015; 27:852- 863.
69. Song T, Wang Z, Ji F, Feng Y, Fan Y, Chai G, Li X, Li Z, Zhang Z. Deactivation of Mcl-1 by dual-function small-molecule inhibitors targeting the Bcl-2 homology 3 domain and facilitating Mcl-1 ubiquitination. *Angew Chem Int Ed Engl.* 2016; 55:14250-14256.
70. Lee S, Wales TE, Escudero S, Cohen DT, Zuccarelli J, Gallagher CG, Cohen NA, Huhn AJ, Bird GH, Engen JR. Allosteric inhibition of antiapoptotic Mcl-1. *Nat Struct Mol Biol.* 2016; 23:600-607.
71. Akcay G, Belmonte MA, Aquila B, Chuaqui C, Hird AW, lamb MI, Rawlins PB, Su N, Tentarelli S, Grimster NP. Inhibition of Mcl-1 through covalent modification of a noncatalytic lysine side chain. *Nat Chem Biol.* 2016; 12:931-936.