

**Military Technical College
Kobry El-Kobbah,
Cairo, Egypt**



**10th International Conference
on Electrical Engineering
ICEENG 2016**

Speed Control of Micro Gas Turbine with PMSG using Evolutionary Computational Techniques

I. A. Moustafa* M. A. Moustafa Hassan**

* Gulf of Suez Petroleum Company (GUPCO)
Red Sea, Egypt
eng.moustafaia@gmail.com

**Department of Electrical Power and Machines
Faculty of Engineering
Cairo University, Giza, Egypt
mmustafa@eng.cu.edu.eg

Abstract: *This paper studies speed control of Micro Gas Turbine with PD controller. The article investigate the behavior of Micro Gas turbine with PMSG under load variations using different controllers .Most of these controllers are based on Evolutionary Computational Techniques (ECT), among these Evolutionary Computational Techniques, Genetic Algorithm (GA), Particle Swarm Optimization (PSO), and Adaptive Accelerated Coefficients Particle Swarm Optimization (AACPSO). In this study, PD parameters are defined using a conventional PD controller is tuned by Ziegler-Nicholas technique. The conventional controller compared with (ECT). Simulation results show that the response of the PSO-Fuzzy like PD, AACPSO-Fuzzy like PD, and AACPSO- PD controller is effectively improved compared with other controllers. The effectiveness of the proposed scheme is confirmed via extensive study using MATLAB-Simulink software. The obtained results are promising.*

Keywords: *Micro Gas Turbine, PMSG, Genetic Algorithm, Speed Control, PSO algorithm*

I. Introduction

In recent years, application of Distributed Generation (DG) sources has increased significantly. Micro Gas Turbine (MGT) is well suitable for different (DG) applications, because it can be connected in parallel to serve larger loads, and it can provide reliable power and has low - emission. (DG) comes in different forms such as on - site gas or diesel fired turbines, reciprocating engines, micro turbines, small hydro induction generators, wind turbines and fuel cells [1]. Proper modeling of the MGT is needed in order to study their operation and impact on power systems. This study deals with the simulation of a Micro Gas Turbine (MGT) system comprising of a Permanent Magnet Synchronous Generator (PMSG).It is driven by a Micro Gas Turbine, suitable for stand-alone as well as grid connected operation. Micro Gas Turbines are small gas turbines which burn gaseous or liquid fuels to create high energy gas stream that turns an electrical generator [2]. There is growing interest in the application of MGTs because they can start gas turbine, suitable for stand-alone as well as grid connected operation. There is growing interest in the application of MGTs as they can start quickly and are especially useful for on-peak power supply for grid support. Generally conventional gas turbines range from 500 kW to more than 300 MW [4 - 7], MTG systems range from 30 to 400 kilowatts [3]. Micro turbines are capable of burning a number of fuels at high and low pressure levels further, as

well as their design simplicity and relatively fewer moving parts, micro turbines have the potential for simpler installation, higher reliability, reduced noise and vibration, lower maintenance requirements, lower emissions, continuous combustion and possibly lower capital costs compared to reciprocating engine [8 - 9]. There are mainly two types of micro turbine systems available, single-shaft model and two shaft model. In single shaft designs, a single expansion turbine turns both the compressor and the generator. As a result they operate at high speeds, some in excess of 100,000 rpm. Two-shaft models, on the other hand, use a turbine

to drive the compressor on one shaft and a power turbine on a separate shaft connected to a conventional generator via a gear box which generates AC power at 60 Hz or 50 Hz [9]. The purpose of this paper is to design a controller to control the speed of the gas turbine based on ECT. The responses of ECT are compared with the conventional controller for the same turbine model. This article is organized as following: Section II gives an overview for the Integrated MTG System. Section III presents the Simulated Model. Moreover, Section IV introduces the GA. Furthermore, Section V discusses the concept of Fuzzy Logic. Meanwhile, Section VI discusses the PSO. Section VII displays the Simulation Results. Finally the Conclusion of the article is given. An appendix is given at the end of the article after an updated list of References.

II. System Overview

The basic components of a micro turbine generation system are the turbine, high speed generator, power electronics interfacing, and filter. Figure 1 illustrates the schematic diagram of a single-shaft micro turbine, which are more familiar in the market, based generation system. Micro turbines, like large gas turbines, operate based on the thermodynamic cycle known as the Brayton cycle [11]. In this cycle, the inlet air is compressed in a radial (or centrifugal) compressor. The compressed air is mixed with fuel in the combustor and burned. The hot combustion gas is then expanded in the turbine section, producing rotating mechanical power to drive the compressor and the electric generator, mounted on the same shaft (single-shaft) design. The microturbine produces electrical power either via high-speed generator (PMSG) turning on the single turbo-compressor shaft. In PMSG the dc field winding of the rotor is replaced by a permanent magnet [14]. This power conditioning is used to convert the high frequency AC power produced by the generator into usable electricity. The high frequency AC is rectified to DC, inverted back to 60 or 50 Hz AC, and then filtered by LCL filter to reduce the high order harmonics at grid side (load side). Micro turbines are generally equipped with controls that allow the unit to be operated in parallel or independent of the grid, and internally incorporate many of the grid and system protection features required for interconnect. The controls also allow for remote monitoring and operation [5].

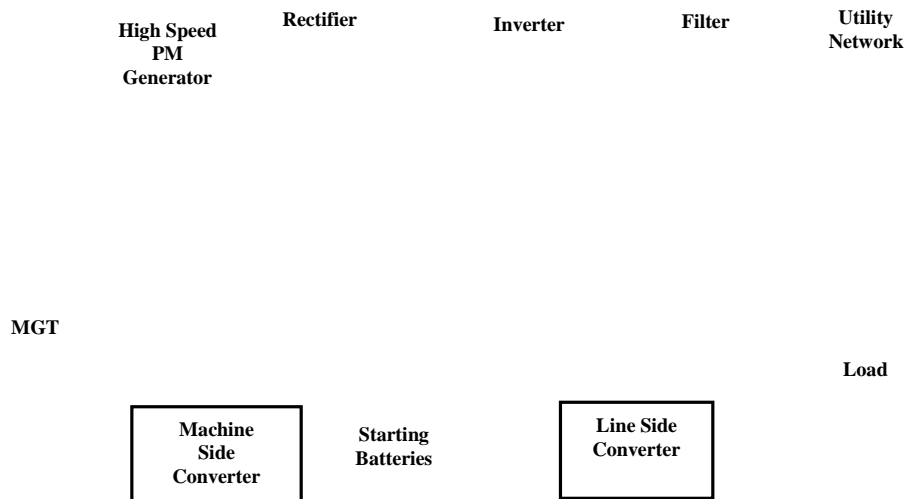


Figure 1 Integrated MTG System

III. Mathematical Model of Micro Gas Turbine

The micro turbine system presented in this section is based on the gas turbine model presented by Rowen [4], the dynamic model of gas turbine and its control systems is shown in Figure 2 which was successfully adopted for micro turbine modeling by several authors [12 - 13]. The components of the single-shaft gas turbine modeled include speed control, temperature control

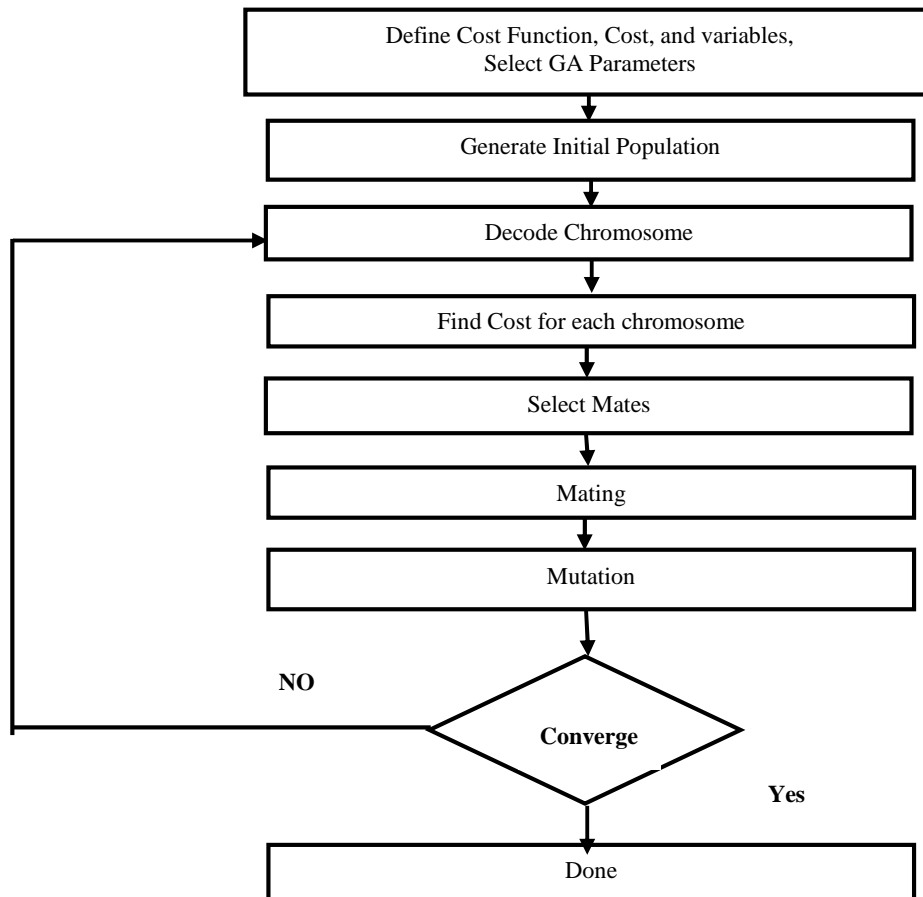


Figure 3 Flow Chart of GA

The algorithm terminates after a fixed number of iterations and the best individual generated during the run is taken as the solution, as explained in [15].

V. Fuzzy Logic

Fuzzy logic (FL) was first proposed by Lotfi A. Zadeh (1965) [16] and is based on the concept of fuzzy sets. Fuzzy set theory provides a means for representing uncertainty. In general, probability theory is the primary tool for analyzing uncertainty, and assumes that the uncertainty is a random process. However, not all uncertainty is random, and fuzzy set theory is used to model the kind of uncertainty associated with imprecision, vagueness and lack of information. On the other hand, fuzzy systems are multi input single output mappings from a real valued vector to a real valued scalar [16]. The basic structure of a fuzzy logic controller is illustrated in Figure 4, as presented in [18]. A Fuzzy Logic Controller (FLC) commonly consists of four sections including: Fuzzification, Inference Engine, Rule Bases, and Defuzzification. A rule base is made up of series of IF-THEN rules corresponding to the fuzzy inputs and leading to the fuzzy outputs. The rules can be developed using knowledge from experts or operators in the field, as well as historical experience.

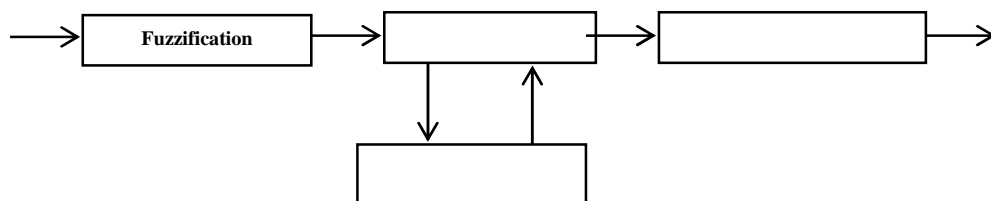


Figure 4 Fuzzy Logic Controller Structure

To design the fuzzy controller some variables which can represent the dynamic performance of the system should be chosen to be fed as the inputs [18]. In this paper the fuzzy logic controller has two inputs and one output. The inputs are turbine speed deviation (e) and its derivative (de) and the output is the change in controller position. The number of linguistic terms for each linguistic variable is selected as seven (Negative Big=NB, Negative Mean=NM, Negative Small=NS, Positive Small=PS, Positive Mean=PM, Positive Big=PB). The inference mechanism is based on Mamdani technique. In this design, the minimum is applied for data AND operator, maximum for OR operator, minimum for implication operator maximum for aggregation operator, and finally centroid technique for Defuzzification. The membership functions for inputs variations are Gaussian and they are considered triangular for the controller output variations. The membership function of inputs and the output variations are shown in Figure 5 and Figure 6, respectively. The rule table for speed controller is shown in Table 1.

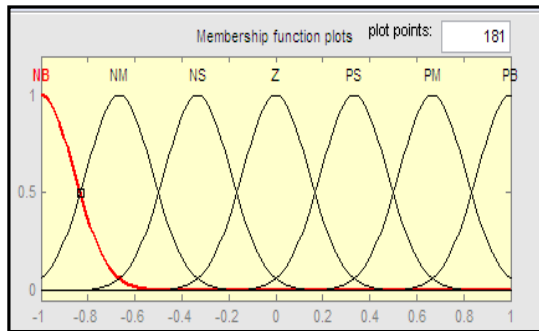


Figure 5 Membership Functions for Input

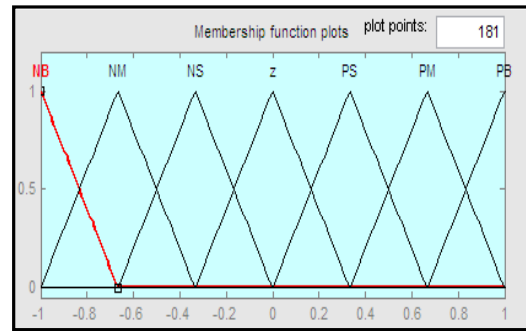


Figure 6 Membership Functions for Output

Table 1 Control Outputs (49 Rules)

		de						
		NB	NM	NS	Z	PS	PM	PB
e	NB	NB	NB	NB	NM	NM	NS	Z
	NM	NB	NB	NM	NM	NS	Z	PS
	NS	NB	NM	NS	NS	Z	PS	PM
	Z	NM	NM	NS	Z	PS	PM	PM
	PS	NM	NS	Z	PS	PS	PM	PB
	PM	NS	Z	PS	PM	PM	PB	PB
	PB	Z	PS	PM	PM	PB	PB	PB

VI. Particle Swarm Optimization

Particle Swarm Optimization (PSO) is one of the most powerful stochastic optimization techniques developed by Eberhart and Kennedy in 1995 [19]. It has recently attracted more attention due to its rapid convergence and algorithmic accuracy compared to other optimization methods. PSO is inspired by social behavior of bird flocking or fish schooling and shares many similarities with evolutionary computation techniques such as GA [20].

a) PSO:

Particle swarm optimization (PSO) is based on the swarm behavior such as fish and bird schooling in nature. Since then, PSO has generated much wider interests, and forms an exciting, ever-expanding research subject, called swarm intelligence. PSO has been applied to almost every area in optimization, computational intelligence, and design/ scheduling applications. There are at least two dozens of PSO variants, and hybrid algorithms by combining PSO with other existing algorithms are also increasingly popular. The principle of

PSO is to simulate a collective behavior used to show the motion of birds and fish. PSO has simulated the birds' motion along two directions. The position of each individual (representative) is represented by x y vectors and v_x (velocity on x-axis) and v_y (velocity on y-axis) express the velocity. Although in PSO, each member has an adaptive speed (location change) due to which moves in search space, each one has a memory, in other words, it remembers the best position it has reached in the search space. Therefore, each member moves on two directions. 1- Towards the best position they have met, 2- Towards the best position the best member has met in neighborhood. According to the issues mentioned above, the position of each member is determined via its own speed and position. The velocity and position of each particle is modified according to Equation 1 and Equation 2, respectively [21]:

$$v_i^{k+1} = wv_i^{k+1} + c_1 rand_1 \times (pbest_i - s_i^k) + c_2 rand_2 \times (gbest_i - s_i^k) \quad (1)$$

$$s_i^{k+1} = v_i^{k+1} + s_i^k \quad (2)$$

Where,

v_i^k	Current velocity of particle i at iteration k
v_i^{k+1}	New velocity of particle i at next iteration k+1
s_i^k	Current position of particle i at iteration k
s_i^{k+1}	New position of particle i at next iteration k+1
c_1 and c_2	Adjustable cognitive and social acceleration constants
$rand_1$ and $rand_2$	random number between 0 and 1
$pbest_i$	Personal best of particle i
$gbest_i$	Global best of the population

The algorithmic steps involved in PSO algorithm are displayed in Figure 7 and discussed as follows:

1. Initialize the population – positions and velocities
2. Evaluate the desired optimization fitness function of the individual particle ($pbest$)
3. Keep track of the individuals' highest fitness ($gbest$)
4. Modify velocities based on $pbest$ and $gbest$ position
5. Update the particles velocities and positions according to Equation 1 and Equation 2.
6. Repeat steps 3-6 until the stopping criterion of maximum generations is met.

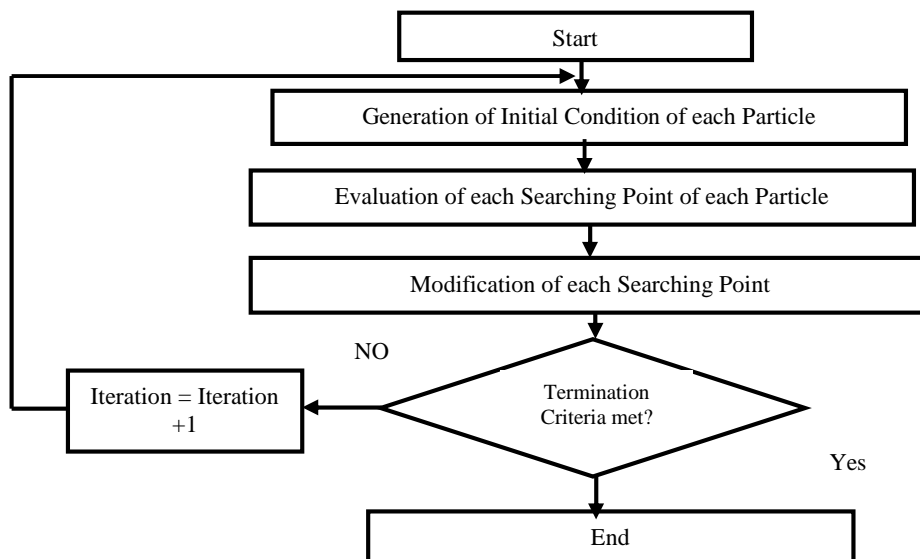


Figure 7 Flow Chart of PSO

b) AACPSO:

The standard particle swarm optimization uses both the current global best $gbest_i$ and the individual best $pbest$. The reason of using the individual best is primarily to increase the diversity in the quality solutions; however, this diversity can be simulated using some randomness. Subsequently, there is no compelling reason for using the individual best, unless the optimization problem of interest is highly nonlinear and multimodal. A simplified version which could accelerate the convergence of the algorithm is to use the global best only. Thus, in the Adaptive Accelerated Coefficients PSO (AACPSO) [20], the velocity vector is generated by a simpler formula Equation 1 further improvement to the PSO is Adaptive Accelerated Coefficients PSO (AACPSO) to reduce the randomness as iterations proceed. This means that we can use a monotonically decreasing function such as:

$$c_1 = c_{01} e^{-k_c t \alpha_c} \quad (3)$$

$$c_2 = c_{02} e^{-k_c t \alpha_c} \quad (4)$$

$$w = w_0 e^{-t \alpha_w} \quad (5)$$

$$\alpha_c = \frac{1}{t_{max}} \cdot \ln\left(\frac{c_{02}}{c_{01}}\right) \quad (6)$$

$$k_c = \frac{F_m - Gbest}{F_m} \quad (7)$$

Where w , c_1 and c_2 are the inertia weight factor and acceleration coefficients respectively at iteration t , \ln is the neperian logarithm. α_w is determined with respect to initial and final values of w with the same manner as α_c . k_c is calculated based on the fitness value of $Gbest$ and $Pbest$ at iteration t . w_0 , c_{01} and c_{02} initial values of inertia weight factor and acceleration coefficients respectively. F_m is the mean value of the best positions related to all particles at iteration t , as illustrated at [22].

VII. Simulation and Discussions of Results

The performance of the controller designed for operating condition is evaluated. Seven controllers, ZN, GA-PD, evaluated. Seven controllers, ZN, GA-PD, GA-Fuzzy like PD, PSO-PD, PSO-Fuzzy like PD, AACPSO-PD, AACPSO-Fuzzy like PD, are designed for gas turbine model and the results are compared in order to evaluate the performance of the controllers. To investigate the performance of the designed controllers under different operating conditions, the operating condition of the system has been changed. The simulation parameters are given in Appendix A. Figure 8 shows the developed model of the MGT system with external DC source in MATLAB / SIMULINK using SIMPOWER toolbox. The operation of PMSG in generating or motoring mode is decided by the sign of the input mechanical torque. During start-up the PMSG operates as a motor to bring the turbine speed of 7000 radian /sec. In this case, power flows from the DC source to MGT system [23]. The Micro turbine reaches the set value of speed in 0.4 sec. To ensure the operating condition, the speed regulator provides the reference value for the speed. In this mode of operation of MGT system, the machine side converter acts as inverter. At $t=0.4$ sec, the sign of the PMSG input torque is changed to operate it in generating mode. At $t=0.4$ sec, the reference speed is set to the recalculated value of 10053 radian /sec, the DC source will removed from the system at $t=1.7$ sec. After that, the MGT system will supply the power to the load continuously. During the operation, the DC link voltage must be maintained constant by the line side converter. In

this model, machine side and line side converter controllers are very important as machine side controller maintains the PMSG voltage level and the micro-turbine ignition speed level. If ignition speed is not maintained, the PMSG will be shutdown. The line side converter is maintaining the constant DC voltage level and the load side voltage level. It is observed that the machine side and the line side converter controllers are working properly. So, the micro-turbine maintains the ignition speed and the PMSG runs as a generator. The MGT system delivering the rated active power to the load continuously and the load side voltage and current wave forms are sinusoidal.

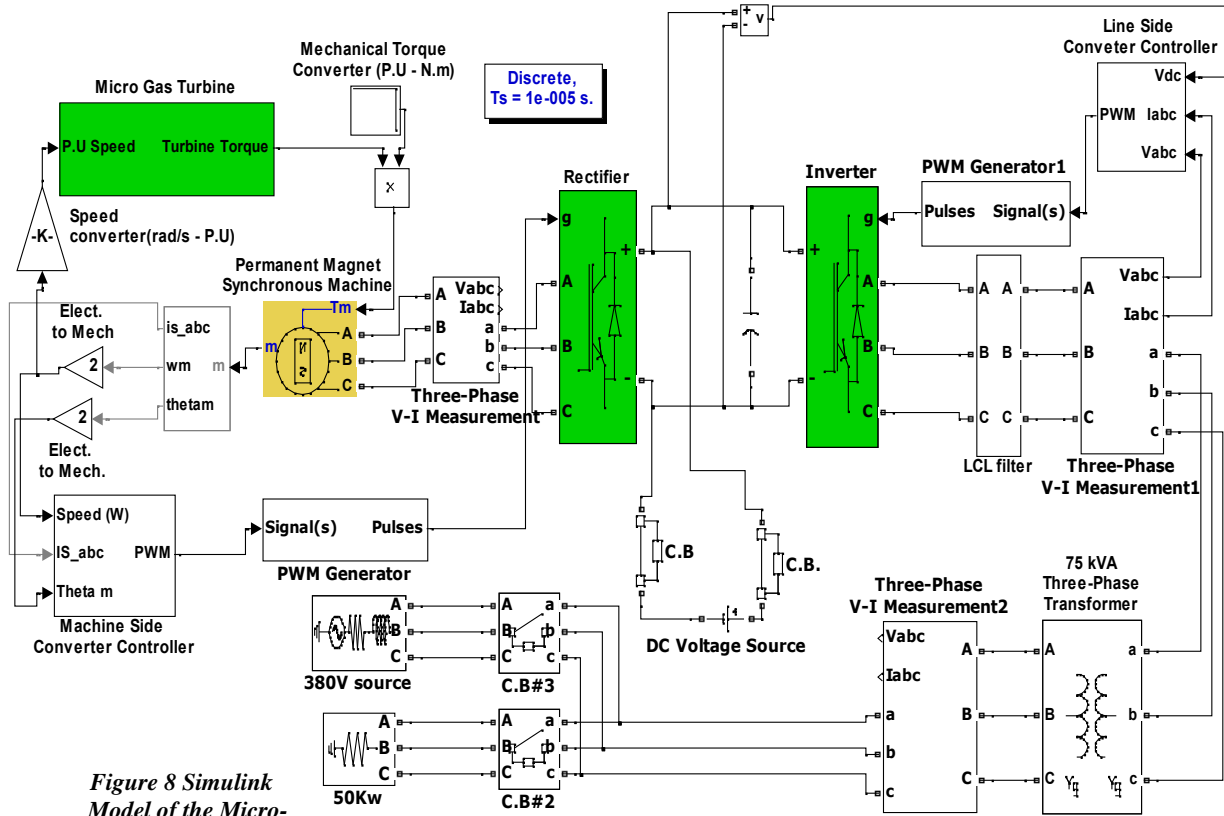


Figure 8 Simulink Model of the Micro-

Turbine with PMSG

PID and PI controllers are not chosen due to unstable speed response obtained from simulation results, so that PD controller which will be used at this paper

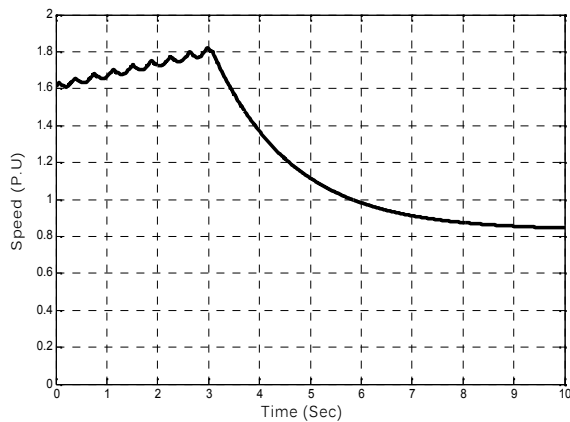


Figure 9 Speed of MGT without Load Using PID and PI Controller

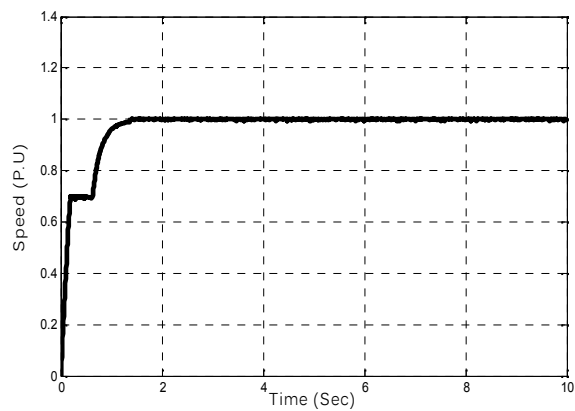


Figure 10 Speed of MGT without Load Using PD controller

The load variations curve is shown in Figure 11, the load is applied (50kW) at 3 Sec at island mode, and in the grid mode the load is applied (50kW) at 1.8 Sec and utility network at 3 Sec

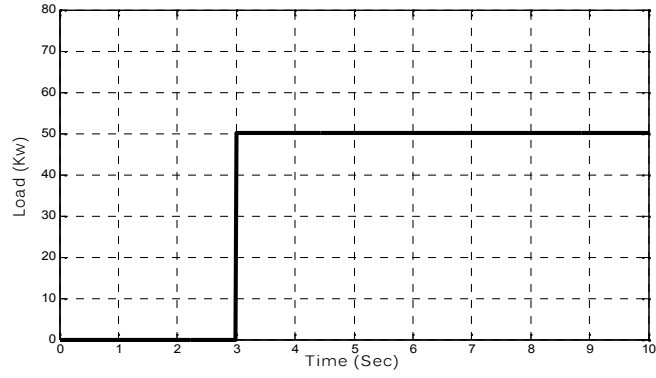


Figure 11 Load Curve

The load voltage and current waveform are displayed in Figure 12, and Figure 13

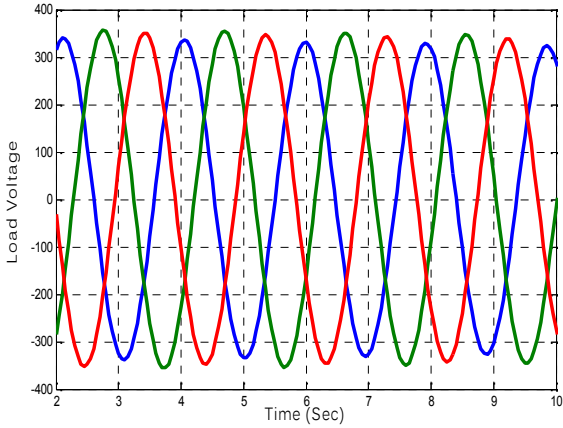


Figure 12 Load Voltage

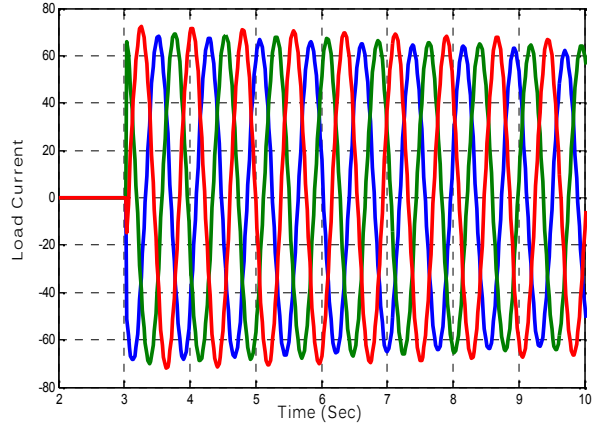


Figure 13 Load Current

From the operation of the seven controllers in power controlling against the load variations shows that the response curve with PSO-Fuzzy like PD under IAE performance index and AACPSO-Fuzzy like PD under ITAE performance index has the best values of over shoot (0.01%) and settling time (1Sec), after them comes GA-Fuzzy like PD under ITAE performance index (0.23%) and (1.5Sec) in the case of island mode. In grid mode AACPSO-PD under IAE performance index comes in the first stage with over shoot (0.01%) and settling time (1Sec) and then GA-PD under IAE performance index with over shoot (0.4%) and settling time (1Sec). Based on all techniques disused on this proposal Table 2 illustrates the Comparison of Results for speed controller of MGT.

Table 2
Comparison between Proposed Tuning Methods at Island and Grid Mode

Tuning Method	Island Mode		Grid Mode	
	Over Shoot	Settling Time (Sec)	Over Shoot	Settling Time (Sec)
ZN	0.3%	3	0.4%	2
GA-PD	0.2%	1	0.4%	1
GA-Fuzzy like PD	0.23%	1.5	0.4%	2
PSO- PD	0.2%	2S	0.4%	2
PSO-Fuzzy like PD	0.01%	1	0.4%	2
AACPSO- PD	0.3%	1	0.01%	1
AACPSO-Fuzzy like PD	0.01%	1	0.4%	2

Figure 14 to Figure 15 display transient speed response under different controllers after applying the load at 3 sec and utility network.

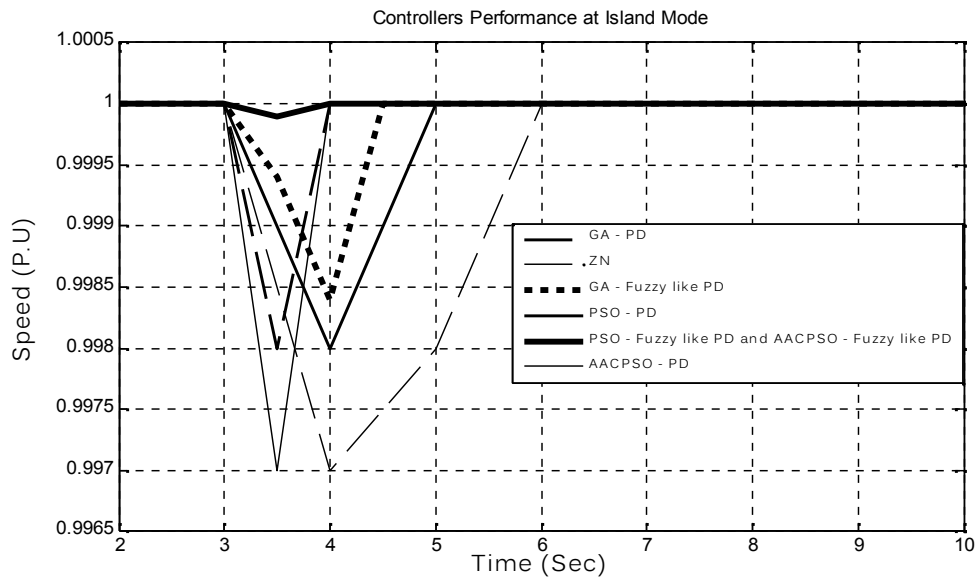


Figure 14 Speed Response of MGT at Island Mode

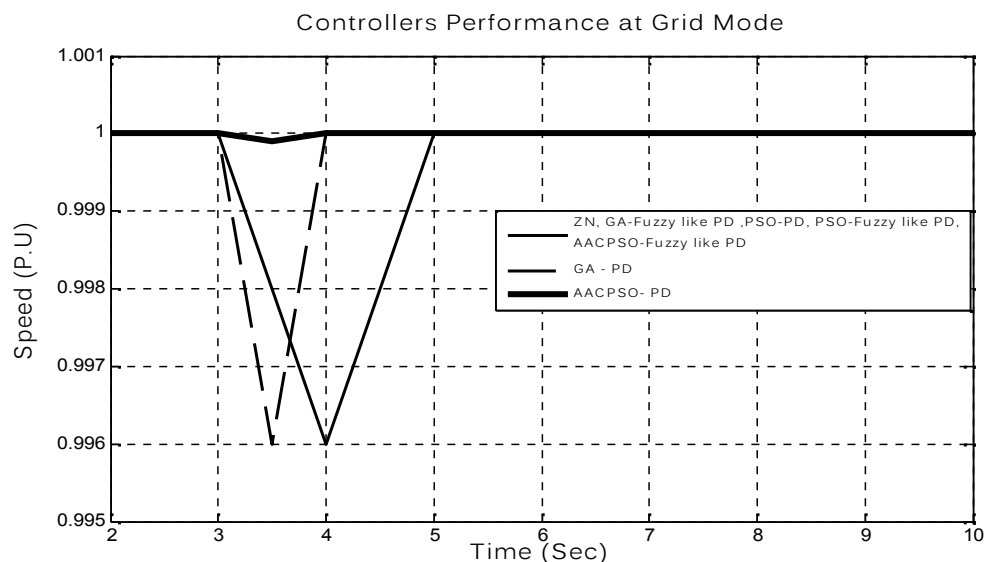


Figure 15 Speed Response of MGT at Grid Mode

It's clear from the above results that that the PSO-Fuzzy like PD ,and AACPSO-Fuzzy like PD controllers have a considerable advantage in compare with other controller in speed control at island mode (O.S = 0.01%, $T_s=1$ Sec). In the grid mode the AACPSO- PD controller has a considerable advantage in compare with other controllers in speed control (O.S = 0.01%, $T_s=1$ Sec).While PSO and AACPSO are more supporter than GA and ZN.

VIII. Conclusion

In this proposed study, the ECT based PD have been investigated for speed control of a Micro Gas Turbine. For this purpose, which PSO is more adaptive tuning mechanism for the PD controller parameters is obtained . It has been shown that the proposed control algorithm is effective and provides significant improvement in system performance. Therefore, the proposed PSO and AACPSO techniques are recommended to generate good quality and

reliable electric energy. In addition, the proposed controller is very simple and easy to implement since it does not require many information about system parameters. The obtained results are promising.

References

- [1] Y. Zhu, and K. Tomsovic, "Optimal distribution power flow for systems with distributed energy resources," *Electrical Power and Energy Systems*, Vol. 29, pp. 260-267, 2007.
- [2] Francisco Jurado and Jose Ramon Saenz, "Adaptive control of a fuel cell-micro turbine hybrid power plant," *IEEE Transactions on Energy Conversion*, Vol. 18, No.2, pp. 342-347, June 2003.
- [3] Anne-Marie Borbely and Jan F. Kreider, *Distributed generation-The Power Paradigm for the New Millennium*, CRC Press, 2001.
- [4] W. I. Rowen, "Simplified mathematical representations of heavy duty gas turbines", *Journal of Engineering for Power, Transactions ASME*, Vol. 105, No. 4, pp. 865-869, Oct, 1983.
- [5] Energy and Environmental Analysis (an ICF International Company) 1655 North Fort Myer Drive Suite 600 Arlington, Virginia 22209, December 2008.
- [6] L. M. Hajagos and G. R. Berube, "Utility experience with gas turbine testing and modeling," in Proc. *IEEE PES Winter Meeting*, Vol. 2, 2001, pp. 671-677 Jan. / Feb. 2001, Columbus, OH.
- [7] Working Group on Prime Mover and Energy Supply Models for System Dynamic Performance Studies, "Dynamic models for combined cycle plants in power system studies," *IEEE Transactions on Power Systems*, Vol. 9, No. 3, pp. 1698-1708, August 1994.
- [8] Anders Malmquist, "Analysis of a gas turbine driven hybrid drive system for heavy vehicles," *Ph.D. dissertation, School of Electrical Engineering and Information Technology*, KTH, Stockholm, Sweden, 1999.
- [9] Amer Al-Hinai, Ali Feliachi, "Dynamic Model of a micro turbine used as a distributed Generator," in Proc. *34th Southeastern Symposium on system Theory*, Huntsville, pp.209-213, Alabama, March 2002.
- [10] Y. Zhu and K. Tomsovic, "Development of models for analyzing the load-following performance of micro turbines and fuel cells," *Journal of Electric Power Systems Research*, Vol. 62, pp. 1- 11, 2002.
- [11] Larry Goldstein, Bruce Hedman, Dave Knowles, Steven I. Freedman, Richard Woods and Tom Schweizer., "Gas-fired distributed energy resource technology characterizations," *National Renewable Energy Laboratory*, NREL/TP-620-34783, Nov. 2003.
- [12] F. Jurado and A. Cano, "Use of ARX algorithms for modeling micro turbines on the distribution feeder," *IEE Proceedings: Generation Transmission and Distribution*, Vol. 151, No. 2, pp. 232-238, Mar. 2004.
- [13] L. N. Hannet and Afzal Khan., "Combustion turbine dynamic model validation from tests," *IEEE Transactions on Power Systems*, Vol. 8, No. 1, pp. 152-158, Feb. 1993.
- [14] Bimal K.Bose, *Modern Power Electronics and AC Drives*, Pearson Education, 2003.
- [15] Randy L. Haupt Sue Ellen Haupt *Practical Genetic Algorithms - Second Edition* [Book]. Hoboken, New Jersey : A John Wiley & Sons, Inc., Publication, 2004.
- [16] L.A.Zadah. "Fuzzy Sets Information Control", 338-353, (1965).
- [17] Wang, L.-X. *A Course In Fuzzy Systems And Control*. Hong Kong: Bernard Goodwin - Prentice Hall PTR, (2004).
- [18] F. Jurado, M. Ortega, A. Cano and J Carpio, "Neuro-fuzzy controller for gas turbine in biomass-based electric power plant", *Electric Power Systems Research*, Vol. 60, No. 3, (2002).
- [19] J. Kennedy, R. C. Eberhart, *Swarm intelligence*, Academic Press, 2001.10
- [20] A. B. M. Nasiruzzaman and M. G. Rabbani, " Implementation of Genetic Algorithm and Fuzzy Logic in Economic Dispatch Problem", *5th International Conference on Electrical and Computer Engineering ICECE*, pp. 360-365, Dhaka, Bangladesh, IEEE Conference Publication, 20-22 December 2008.
- [21] Kennedy and R. Eberhart, "Particle swarm optimization", Proc. *IEEE Int. Conf. Neural Networks*, (1995) Australia.
- [22] Salhi Ahmed, Bouktir Tarek and Naimi Djemai, "Economic Dispatch Resolution using Adaptive Acceleration Coefficients based PSO considering Generator Constraints, " Proc. *IEEE Int. Conf. CG DIT*, (2013)
- [23] S. Morimoto, M. Sanada and Y. Takeda, 'Wide speed operation of interior permanent magnet synchronous motors with high performance current regulator,' *IEEE Trans. Industrial Applications*, vol. 30, pp. 920-926, July / Aug. 1994.

Appendix A

The simulation parameters are expressed in the following Table.

PMSG Parameter	400V,50KW, 1.6KHZ, 96000 rpm, $R_s = .25$, $L_d = L_q = .0006875H$, 2poles, rotor Inertia = .0008 Kg.m2, stator flux linkage = .0534 Wb
Micro Gas Turbine Parameters	Manfr.: Capstone , Model:C60 ,60KW ,96000rpm, single shaft with 2pole PMG
Grid Parameters	380V, $R_s = .4$, $L_s = 2e-3$ H
Switching frequency	Machine side converter =20KHZ Line side converter =2KHZ
Filter Parameters	$L_1 = 2e-3H$, $L_2 = 1e-3H$,C(var)= 3.5Kvar
DC link capacitance	500 μ F
PI controllers sampling time	100 μ Sec

The values of the GA parameters used in the simulation are displayed in the following Table

Algorithm type	Continues
Population size	100
Elite Count	30
Number of Generations	10
Selection method	'Tournament'
Crossover type	' Scattered crossover'
Crossover probability	0.8
Mutation type	'Uniform mutation'
Mutation rate	.01

The values of the PSO parameters used in the simulation are displayed in the following Table

Island & Grid mode	Performance Index	PSO Parameters
	IAE	N=2 ,n=3 ,C1=C2=0.12 ,w=0.9
	ISE	N=2 ,n=3,C1=1.5 ,C2=.12 ,w=0.9
	ITAE	N=2 ,n=3,C1=C2=0.15 ,w=0.9