

Implant loss in Diabetic Patients: A Systematic Review

Mohamed T. Khalifa¹, Mohamed Amr ElKhashab², Nagla M. H. Nasouhy³ & Iman Abd-ElWahab Radi⁴

Aim: The aim of this systematic review to evaluate the effect of diabetes on dental implants loss.

Data Sources: Review authors searched 3 electronic databases; Pubmed, Cochrane and Lilacs: 11/10/2018, hand searched 11 journals till November 2018 and snowballing: 15/10/2018.

Eligibility criteria: Adult female and male patients above 18 years old, either completely or partially edentulous, maxillary and/or mandibular dental implants, restored by fixed or removable prosthesis, were included. Surgical modifications, drugs that affect bone density, like vitamin D and biphosphonates, were excluded. Diabetic patients, who are classified either controlled or uncontrolled were considered eligible.

Data Collection and Analysis: Review authors extracted data relevant to PECOT. Data was descriptively and statistically analyzed.

Results: 14 studies; 9 prospective and 5 retrospective studies, involving 1398 participants and 3282 implants, were included in this systematic review. 3 studies were included in the meta-analysis.

Conclusion: Based on the results of implant loss 2 years following implant placement, implant therapy in diabetic patients seems to be possible. However, results should be taken with extreme cautions, since the quality of evidence is very low.

Key words: Diabetes mellitus, high blood sugar, Dental implants, Oral implants

1. MSc Student, Prosthodontics department, Faculty of Dentistry, Cairo University, Cairo, Egypt.
2. Lecturer of Prosthodontics, Faculty of Dentistry, Cairo University, Cairo, Egypt.
3. Associate Professor of Prosthodontics, Faculty of Dentistry, Cairo University, Cairo, Egypt.
4. Professor of Prosthodontics, Member of Evidence Based dentistry Center, Head of Fundraising Unit, Head of Central Control Unit, Faculty of Dentistry, Cairo University, Cairo, Egypt.

Corresponding author: Mohamed T. Khalifa, email: mohamed-talaat@dentistry.cu.edu.eg

Introduction

Diabetes mellitus considered as a relative contraindication for dental implants, according to the blood glucose level and the glycosylated hemoglobin (HbA1c).^{1,2} The duration of the endocrinal disorder, more than 10 years, is responsible for microvascular complications and implant failure^{3,4} due to the inhibition of osteoblastic and the promotion of osteoclastic activity.³ The condition also affects the response of the parathormone hormone, which regulates calcium and phosphate mechanism.⁵ Which affects bone matrix formation and decreases growth and formation of extracellular matrix,^{5,6} Therefore, bone formation during healing inhibited.

Management of periodontal infection and inflammation was found to be associated with a decrease in the glycosylated hemoglobin level. So, claimed to improve the success rate of dental implants in diabetic patients.^{15,16} In Addition to, the use of wide and long implants that were surface treated by active materials, prophylactic antibiotics post-surgically and 0.12% chlorhexidine mouth rinse twice daily were claimed to improve the survival of implants in diabetic patients.^{10,17,18} The chlorhexidine mouth rinse was found to be effective in decreasing the effect of *P.gingivalis* infections and peri-implant mucositis.^{19,20,21}

Unfortunately, results of available reviews should be taken with caution due to heterogeneity between studies, populations, unmanaged confounders and increased risk of bias. absence of SRs with only the inclusion of controlled and randomized clinical trials with accurate calculation of the sample size should be undertaken. In addition, better interpretation of the data would be possible if the studies included questions such as type of implant, location of the implant, type and duration of diabetes, glycemic control, and type of prosthetic restoration. So, this systematic review (SR)

aims to explore whether dental implant placement in well or uncontrolled diabetic patients, if compared to healthy subjects increases the risk of implant failure.

Materials and Methods

This SR was reported following the PRISMA^{7,23} (preferred reporting items for systematic reviews and meta-analysis) statement. The review was registered at Removable Prosthodontics Department, Faculty of Oral and Dental Medicine, Cairo University.

Selection Criteria

Adult female and male patients above 18 years old, completely or partially edentulous, maxillary and/or mandibular dental implants, restored by fixed or removable prosthesis, were included. Surgical modifications, drugs that may affects bone density, like vitamin D and biphosphonates, were excluded. Diabetic patients, who are classified either controlled or uncontrolled were considered eligible.

Cohort studies, randomized and non-randomized clinical trials, comparing between implants in diabetic and non-diabetic patients were included. Articles reporting survival rates as an outcome without referring to the follow up duration were excluded. Reviews, case series, case reports, animal studies, in-vitro, case control, cross sectional studies were excluded. Published articles with no limitation for years were considered eligible for this review. Only articles published in English language were included .

Search Methodology

IR, NN and MK searched 3 databases: PubMed, Cochrane and LILACS till October 2018. Search terms and strategy developed in Medline (PubMed) database are shown in (**Table 1**), No filters were used in all databases except English filter in LILACS

database. Eleven journals were searched by MK and IR till December 2020, These journals were: (Journal of oral implantology, International journal of prosthodontics, Journal of clinical implantology researches, European journal of oral implantology, International journal of periodontics and restorative dentistry, Journal of clinical oral implants researches, International Journal of Oral & Maxillofacial Implants, Journal of Prosthetic Dentistry, Quintessence International, Journal of dental researches and journal of oral and maxilla-facial surgery). Reference lists of eligible articles and previously published systematic reviews were also screened by M.K. and IR to make sure no articles were missed during the search. During the selection process 23 authors were contacted about missing data.

Table 1: Search strategy

Exposure	Population
dental implant	diabetes mellitus
dental implants	type I diabetes
Oral implant	type II diabetes
Oral implants	1diabetes
Osseointegrated implants	2diabetes
Osseointegrated implant	2diabetes mellitus
Dental implant osseointegration	Diabetic patient
dental implanting	Diabetic patients
oral implanting	Elevated blood glucose
Dental implantology	Hyperglycemia
Oral implantology	Hyperglycaemia
Oral implantation	High blood glucose
Implant prosthodontics	diabetes blood glucose
Implant prostheses	blood sugar diabetes
Fixture	High blood sugar
Fixtures	

Study Selection

All identified studies were imported to (Endnote X7.4) and all duplicates were removed. The titles and abstracts of identified studies were screened by MK and NN independently. Secondary screening was carried out by MAK, NN, and MK through full text. Disagreements were resolved a third review author IR.

Data Collection Process

IR and MK independently and in duplicate extracted the data of included studies using paper-based data extraction forms. Before reading the included studies a preliminary data extraction form, containing information about participants, exposure, comparator, outcomes, time points and study design was used.

Risk of Bias

IR and MK assessed the risk of bias for the included trials independently for all studies. In case of disagreement between both authors, a third reviewer MAK was involved to resolve the issue

Data Analysis

I.R. and M.K. planned to perform a meta-analysis using review manager software (RevMan) Version 5.3. The statistical heterogeneity was assessed by various methods; first eyeballing. IR and MK planned to do subgroup analysis if more than 10 studies were included. However, it was only possible to do subgroup analysis for the level of diabetes.

Results

Figure 1 shows the number of articles identified at the different stages of the review. By searching the electronic databases, 6833 references were retrieved in addition to 101 references identified through hand searching, which resulted in a total of 6934 article. After duplicates removal, title and abstract screening resulted in excluding 6851 records and 79 articles were eligible for full text reading. The latter resulted in the exclusion of 65 articles and the inclusion of 14 articles in this SR. From these articles, 13 were included in the meta-analysis. 9 were prospective and 5 retrospective cohort studies.

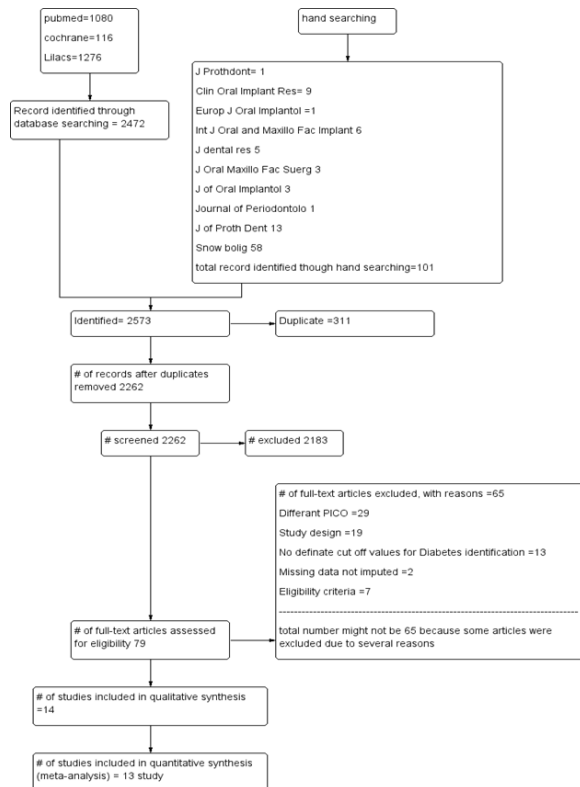


Figure 1: PRISMA Flow diagram indicating number of studies during different review stages.

Description of included studies

A total of 14 studies were identified for inclusion in the review. Number of studies identified through the different stages of the review is clarified in the PRISMA²³ flow diagram (**Figure 1**).

From the 14 included studies, 7 were performed in KSA^{31, 32, 33, 34, 35, 36, 37}, two^{38, 39} in USA, two^{40, 41} in Spain, one⁴² in Belgium, one⁴³ in Greece, one⁴⁴ in Brazil, one in Italy⁴⁵ and one⁴⁶ in Lebanon., 9 were prospective^{47, 32, 38, 44, 40, 34, 48, 49, 46} and 5 retrospective cohort studies^{35, 36, 37, 31, 42}. The female to male ratio was 762/678 (1.12/1). This was based on all of included studies except Abduljabbar 2016³¹, who did not report the gender distribution in their study. Age of patients ranged between 29 to 85 years, with a mean age of all 54.89 years, that was calculated based on all studies except Al

Saadi 2008⁴², who did not report the mean age of their participants. The duration of the endocrinal disorder was not reported in 6 studies.^{34,48,49,40, 45,42} The mean duration of diabetes mellitus in years was 7.13 years based on the studies that reported the mean duration. The minimum duration for implants in function was 12 months and the maximum was 144 months, with a mean duration of 45.499 months, 38.04 months for the prospective studies and 52.954 months for the retrospective ones.

A total of 3282 implants were inserted in 1398 participants; 2213 non-diabetic and 1069 diabetic patients, The participants were partially edentulous patients with multiple missing teeth in 5 studies.^{38,44,35,31,49} 2213 implants were placed in non-diabetic, while 1069 implants were placed in diabetic ones, where 493 were placed in the well, 364 in the moderately and 178 in the poorly controlled diabetic patients. while the study of Oates 2014⁴⁹ included completely edentulous patients only. Five studies^{47,32, 34,48,36} included patients with single missing tooth. The remaining four studies^{46, 43,45,42} did not report the edentulous status. The condition of the opposing dentition was not reported in all studies except Oates 2014⁴⁹ which included completely edentulous arches and Gomez 2015 which included opposing natural dentition. The ratio of implants placed in the maxilla to the mandible is 1:1.26. The duration of the endocrinal disorder was not reported in 6 studies^{34,48,49,40, 45,42}. The mean duration of diabetes mellitus in years was 7.13 years based on the studies that reported the mean duration. The minimum duration for implants in function was 12 months and the maximum was 144 months, with a mean duration of 45.499 months, 38.04 months for the prospective studies and 52.954 months for the retrospective ones.

Risk of bias assessment

Figure 2 shows the review author's judgments about each risk of bias assessment for each domain for each of the included studies. 8 studies were judged at critical risk of bias and 6 at serious risk of bias

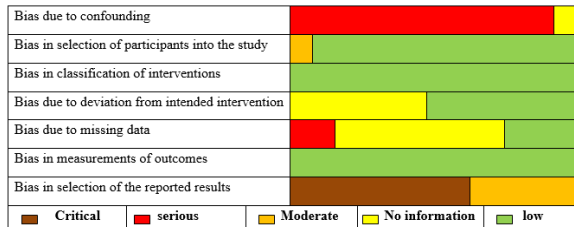


Figure 2: Risk of bias graph: review authors judgments across all included studies for all domains

Quantitative Analysis

9 studies reported implant loss as an outcome, all of them showed no significant difference between patients with higher and lower HbAc1. Results were considered significant at $P \leq .05$. This SR included a meta-analysis showing the results of implant loss at 24 months following implant insertion. The results showed no significant difference in the comparison of diabetic and healthy patients with RR 1.1[0.37, 3.26], $P = .86$, heterogeneity $T^2 = 0$, $I^2 = 0\%$, after 6 months, RR = 1.35[0.62, 2.95], $P = .45$, heterogeneity $T^2 = 0$, $I^2 = 0\%$, after 12 months, RR = 1.44[0.35, 5.89] $P = .61$ heterogeneity $T^2 = 0.53$, $I^2 = 24\%$ after 24 months, RR 2.27[0.38, 13.53] $P = .37$ heterogeneity $T^2 = 0.55$, $I^2 = 26\%$ after 60 months.

In the comparison between well controlled diabetic and healthy patients, the results revealed no significant difference throughout the whole follow up period with RR = 1.8[0.53, 6.17], $P = .35$ heterogeneity $T^2 = 0$, $I^2 = 5\%$ after 24 months.

Similarly, in the comparison between moderately controlled diabetic and healthy patients the results revealed no significant difference throughout the whole follow up period at RR = 2.41[0.12, 48.34] $P = .56$,

heterogeneity $T^2 = 2.27$, $I^2 = 48\%$ after 24 months.

No significant difference was found between the studied subgroups; well and moderately controlled patients as revealed by the p values = .94 at 24 months follow up periods. It was also shown that the results are not sensitive to combining the different levels of the HbAc1 and reporting them separately.

Discussion

Diabetes mellitus classified into two main types in literature. Type I, insulin dependent diabetes, constitutes 6–10% of total diabetic patients.⁴⁶ While, Type II is non-insulin dependent diabetes mellitus and occurs in 90 to 94% of diabetic patients.⁴⁷ The role of type II diabetes on the dental implants failure was reported in many studies, On the other hand type I was rarely reported in literature. Even in this SR, all studies included type II diabetes except Alsaadi 2008³¹ included both types. The classification of diabetic patients varied in included studies. Some studies^{35, 42, 42} classified diabetic patients based on a HbAc1 levels above 6%, while many studies above 6.5 and 7%. In addition to, some used FPGL, while others were self-reported. Therefore, in this SR only studies with definite cut off points were included and studies were only pooled, when the groups of patients were well defined.

Implant failure as described by the criteria of Albrektsson 1986⁽⁴⁹⁾ was sought for, in 5 studies^{41 42, 38, 30 31}. However, its results were reported as implant loss, while neglecting all other criteria of failure. The results of our meta-analysis showed no statistically significant difference regarding implant loss in diabetic and healthy patients. These results are in accordance with a previously published SR; Naujokat et al 2016¹² which was based on a qualitative synthesis rather than a quantitative one and for a follow up period up to 6 years.

Similarly, a meta-analysis performed earlier by Charconovic et al⁴⁹ revealed no significant difference between healthy and diabetic patients regarding this outcome at RR 1.07[0.8,1.44] P= 0.65. Oates 2009,²⁴ Oates 2014³⁵ and Tawil 2008⁴⁴ also found no significant difference between healthy and diabetic patients regarding implant loss. On the other hand, 2 retrospective studies^{48, 31} and 1 prospective study³⁴ found a significant difference in implant loss between healthy and diabetic patients, surprisingly favoring diabetic patients.

Besides, duration of diabetes in the included studies is variable. It was found to have a significant impact on the results of implant loss and difference between findings of this SR and other studies might be attributed to a difference in the diabetic duration, in addition to other confounding factors that might affect the results. Olson⁵⁰ did a regression analysis and concluded that the duration of diabetes is significantly associated with implant failure (P<0.025). The short term hyperglycemia seems to have no detrimental effects on peri-implant health as does hyperglycaemia in chronic decompensated diabetic patients, since insulin not only has an effect on hyperglycaemia, but may also controls and even stimulates osteoblastic activity.^{51,52}

Sensitivity of the results of implant loss to the different levels of glycemic control, moderately and well controlled diabetic patients were compared to healthy subjects separately and in conjunction. The results showed no significant impact for the glycemic level on the results of implant loss. This might be attributed to fact that implants in diabetic patients do not undergo implant loss at the studied follow up periods. Instead, signs of implant failure like peri-implant mucositis, peri-implantitis and marginal bone loss seem to be more sensitive to higher glycemic levels.

Conclusions

Based on the results of implant loss 2 years following implant placement, implant therapy in diabetic patients seems to be possible. However, results should be taken with extreme cautions, since the quality of evidence is very low

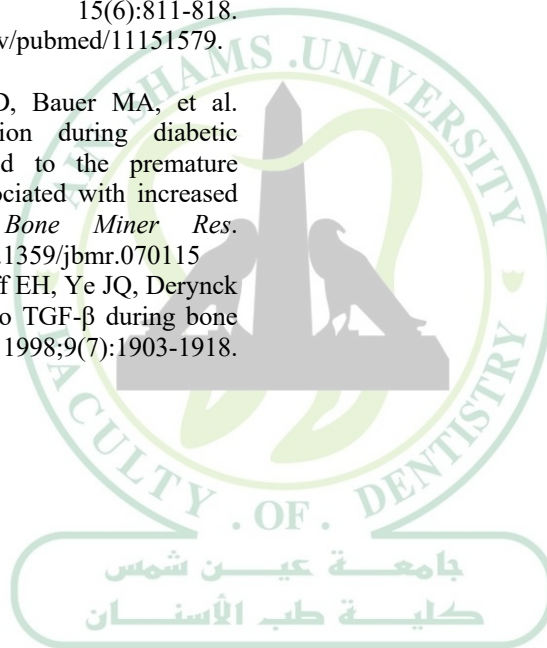
References

1. DIABETES – GLOSSARY OF TERMS. <http://www.diabetes.ie/wp-content/uploads/2011/11/Glossary-of-terms.pdf>. Accessed November 24, 2017.
2. Eastman RC, Vinicor F. Science: moving us in the right direction. *Diabetes Care*. 1997;20(7):1057-1058. <http://www.ncbi.nlm.nih.gov/pubmed/9203435>. Accessed November 3, 2017.
3. AA N, Christensen H, ED L, Christensen C, Brandslund I, Green A. Diabetes mortality differs between registers due to various disease definitions. *Dan Med J*. 61(5):A4840-A4840. <http://pesquisa.bvsaalud.org/portal/resource/en/mdl-24814742>.
4. Lemos CAA, Ferro-Alves ML, Okamoto R, Mendonça MR, Pellizzer EP. Short dental implants versus standard dental implants placed in the posterior jaws: A systematic review and meta-analysis. *J Dent*. 2016;47:8-17. doi:10.1016/J.JDENT.2016.01.005
5. American Diabetes Association AD. Diagnosis and classification of diabetes mellitus. *Diabetes Care*. (Supplement 1). doi:10.2337/dc14-S081
6. Akram Z, Abduljabbar T, Abu Hassan MI, Javed F, Vohra F. Cytokine profile in chronic periodontitis patients with and without obesity: A systematic review and meta-analysis. *Dis Markers*. 2016;2016. doi:10.1155/2016/4801418
7. Souto-Maior JR, Pellizzer EP, De Luna Gomes JM, et al. Influence of Diabetes on the Survival Rate and Marginal Bone Loss of Dental Implants: An Overview of Systematic Reviews. *J Oral Implantol*. 2019;45(4):334-340. doi:10.1563/AAID-JOI-D-19-00087
8. Moraschini V, Barboza ESPP, Peixoto GA. The impact of diabetes on dental implant failure: a systematic review and meta-analysis. *Int J Oral Maxillofac Surg*. 2016;45(10):1237-1245. doi:10.1016/j.ijom.2016.05.019
9. Monje A, Catena A, Borgnakke WS. Association between diabetes mellitus/hyperglycaemia and peri-implant diseases: Systematic review and meta-analysis. 2017;44(6):636-648. <http://doi.wiley.com/10.1111/jcpe.12724>.

- Accessed May 15, 2018.
10. Javed F, Romanos GE. Impact of diabetes mellitus and glycemic control on the osseointegration of dental implants: a systematic literature review. *J Periodontol.* 2009;80(11):1719-1730. doi:10.1902/jop.2009.090283
 11. Chrcanovic BR, Albrektsson T, Wennerberg A. Diabetes and oral implant failure: a systematic review. *J Dent Res.* 2014;93(9):859-867. doi:10.1177/0022034514538820
 12. Naujokat H, Kunzendorf B, Wiltfang JJ. Dental implants and diabetes mellitus-a systematic review. *Int J Implant Dent.* 2016;2(1):5. doi:10.1186/s40729-016-0038-2
 13. Dental implant survival rate in well-controlled diabetic patients. A systematic review. - Dialnet. <https://dialnet.unirioja.es/servlet/articulo?codigo=5296139>. Accessed March 17, 2022.
 14. Moraschini V, Luz D, Velloso G, Barboza E d. SP. Quality assessment of systematic reviews of the significance of keratinized mucosa on implant health. *Int J Oral Maxillofac Surg.* 2017;46(6):774-781. doi:10.1016/J.IJOM.2017.02.1274
 15. Grossi SG, Skrepicinski FB, DeCaro T, et al. Treatment of Periodontal Disease in Diabetics Reduces Glycated Hemoglobin. *J Periodontol.* 1997;68(8):713-719. doi:10.1902/JOP.1997.68.8.713
 16. O'Connell PAA, Taba M, Nomizo A, et al. Effects of periodontal therapy on glycemic control and inflammatory markers. *J Periodontol.* 2008;79(5):774-783. doi:10.1902/JOP.2008.070250
 17. Alasqah M, Mokeem S, Alrahlah A, et al. Periodontal parameters in prediabetes, type 2 diabetes mellitus, and non-diabetic patients. *Braz Oral Res.* 2018;32:e81. doi:10.1590/1807-3107BOR-2018.VOL32.0081
 18. Iacopino AM. Periodontitis and Diabetes Interrelationships: Role of Inflammation. *Ann Periodontol.* 2001;6(1):125-137. doi:10.1902/ANNALS.2001.6.1.125
 19. Noiri Y, Okami Y, Narimatsu M, Takahashi Y, Kawahara T, Ebisu S. Effects of chlorhexidine, minocycline, and metronidazole on *Porphyromonas gingivalis* strain 381 in biofilms. *J Periodontol.* 2003;74(11):1647-1651. doi:10.1902/JOP.2003.74.11.1647
 20. Borrajo JLL, Varela LG, Castro GL, Rodriguez-Nuñez I, Figueroa MG, Torreira MG. Efficacy of chlorhexidine mouthrinses with and without alcohol: a clinical study. *J Periodontol.* 2002;73(3):317-321. doi:10.1902/JOP.2002.73.3.317
 21. Porras R, Anderson GB, Caffesse R, Narendran S, Trejo PM. Clinical response to 2 different therapeutic regimens to treat peri-implant mucositis. *J Periodontol.* 2002;73(10):1118-1125. doi:10.1902/JOP.2002.73.10.1118
 22. Glenny AM, Esposito M, Coulthard P, Worthington H V. The assessment of systematic reviews in dentistry. *Eur J Oral Sci.* 2003;111(2):85-92. doi:10.1034/J.1600-0722.2003.00013.X
 23. ADA Guidelines: Criteria for Diabetes Diagnosis - LabCE.com, Laboratory Continuing Education. https://www.labce.com/spg1794682_ada_guidelines_criteria_for_diabetes_diagnosis.aspx. Accessed March 14, 2019.
 24. Oates TWW, Dowell S, Robinson M, McMahan CAA. Glycemic control and implant stabilization in type 2 diabetes mellitus. *J Dent Res.* 2009;88(4):367-371. doi:10.1177/0022034509334203
 25. Albrektsson T, Zarb G, Worthington P, Eriksson AR. The long-term efficacy of currently used dental implants: a review and proposed criteria of success. *Int J Oral Maxillofac Implants.* 1986;1(1):11-25. <http://www.ncbi.nlm.nih.gov/pubmed/3527955>. Accessed May 14, 2016.
 26. de Araújo Nobre M, Maló P. de araujo 2017 Prevalence of periodontitis, dental caries, and peri-implant pathology and their relation with systemic status and smoking habits: Results of an open-cohort study with 22009 patients in a private rehabilitation center. *J Dent.* 2017;67:36-42. doi:10.1016/J.JDENT.2017.07.013
 27. Chrcanovic BR, Kisch J, Albrektsson T, Wennerberg A. Factors Influencing Early Dental Implant Failures. *J Dent Res.* 2016;95(9):995-1002. doi:10.1177/0022034516646098
 28. Alsaadi G, Quirynen M, Komárek A, van Steenberghe D. Impact of local and systemic factors on the incidence of late oral implant loss. *Clin Oral Implants Res.* 2008;19(7):670-676. doi:10.1111/j.1600-0501.2008.01534.x
 29. van Steenberghe D, Jacobs R, Desnyder M, Maffei G, Quirynen M. The relative impact of local and endogenous patient-related factors on implant failure up to the abutment stage. *Clin Oral Implants Res.* 2002;13(6):617-622. doi:10.1034/j.1600-0501.2002.130607.x
 30. Bignozzi I, Ciobanu G, Quaranta A, Pompa G. Bignozzi 2013 Dental Implant Sites in Healthy versus Diabetic Subjects: A Two-Year Clinical and Bacteriological Assessment. *Eur J Inflamm.* 2013;11(3):813-823.

- doi:10.1177/1721727X1301100324
31. Alsaadi G, Quirynen M, Komárek A, Van Steenberghe D, al saadi B 2008 Impact of local and systemic factors on the incidence of late oral implant loss. *Clin Oral Implants Res.* 2008;19(7):670-676. doi:10.1111/j.1600-0501.2008.01534.x-i2
 32. Abduljabbar T, Al-sahaly F, Al-kathami M, Afzal S, Vohra F. abdeljabbar 2017 Comparison of periodontal and peri-implant inflammatory parameters among patients with prediabetes, type 2 diabetes mellitus and non-diabetic controls. *Acta Odontol Scand.* 2017;75(5):319-324. doi:10.1080/00016357.2017.1303848
 33. Al Amri MD, Kellesarian SV, Al-Kheraif AA, Malmstrom H, Javed F, Romanos GE. Effect of oral hygiene maintenance on HbA1c levels and peri-implant parameters around immediately-loaded dental implants placed in type-2 diabetic patients: 2 years follow-up. *Clin Oral Implants Res.* 2016;27(11). doi:10.1111/clr.12758
 34. Aguilar-Salvatierra A, Calvo-Guirado JL, González-Jaranay M, Moreu G, Delgado-Ruiz RA, Gómez-Moreno G. aguilar 2016 Peri-implant evaluation of immediately loaded implants placed in esthetic zone in patients with diabetes mellitus type 2: a two-year study. *Clin Oral Implants Res.* 2016;27(2):156-161. doi:10.1111/clr.12552
 35. Oates TW, Galloway P, Alexander P, et al. oates 2014 The effects of elevated hemoglobin A1c in patients with type 2 diabetes mellitus on dental implants. *J Am Dent Assoc.* 2014;145(12):1218-1226. doi:10.14219/jada.2014.93
 36. Gómez-Moreno G, Aguilar-Salvatierra A, Rubio Roldán J, Guardia J, Gargallo J, Calvo-Guirado JL. gomez 2015 Peri-implant evaluation in type 2 diabetes mellitus patients: a 3-year study. *Clin Oral Implants Res.* 2015;26(9):1031-1035. doi:10.1111/clr.12391
 37. Eskow CC, Oates TW. Dental Implant Survival and Complication Rate over 2 Years for Individuals with Poorly Controlled Type 2 Diabetes Mellitus. *Clin Implant Dent Relat Res.* 2016;19(3):423-431. doi:10.1111/cid.12465
 38. Ghiraldini B, Conte A, Casarin RC, et al. Influence of Glycemic Control on Peri-Implant Bone Healing: 12-Month Outcomes of Local Release of Bone-Related Factors and Implant Stabilization in Type 2 Diabetics. *Clin Implant Dent Relat Res.* 2016;18(4):801-809. doi:10.1111/cid.12339
 39. Mokeem S, Alfadda SA, Al-Shibani N, et al. mokeem 2018 Clinical and radiographic peri-implant variables around short dental implants in type 2 diabetic, prediabetic, and non-diabetic patients. *Clin Implant Dent Relat Res.* 2019;21(1):60-65. doi:10.1111/cid.12691
 40. Al-Sowaygh ZH, Ghani SMA, Sergis K, Vohra F, Akram Z. al sowaygh 2018 Peri-implant conditions and levels of advanced glycation end products among patients with different glycemic control. *Clin Implant Dent Relat Res.* 2018;20(3):345-351. doi:10.1111/cid.12584
 41. Al Zahrani S, Al Mutairi A. al zahrani A Crestal Bone Loss Around Submerged and Non-Submerged Dental Implants in Individuals with Type-2 Diabetes Mellitus: A 7-Year Prospective Clinical Study. *Med Princ Pract.* 2018;28(1):75-81. doi:10.1159/000495111
 42. AL ZAHIRANI S, AL MUTAIRI AA, AL ZAHIRANI S, AL MUTAIRI AA. al zahrani B Stability and bone loss around submerged and non-submerged implants in diabetic and non-diabetic patients: a 7-year follow-up. *Braz Oral Res.* 2018;32(0). doi:10.1590/1807-3107bor-2018.vol32.0057
 43. Alsahhaf A, Alshiddi IF, Alshagroud RS, Al-Aali KA, Vohra F, Abduljabbar T. Clinical and radiographic indices around narrow diameter implants placed in different glycemic-level patients. *Clin Implant Dent Relat Res.* 2019;21(4):cid.12778. doi:10.1111/cid.12778
 44. Tawil G, Younan R, Azar P, Sleilati G. tawil 2008 Conventional and advanced implant treatment in the type II diabetic patient: surgical protocol and long-term clinical results. *undefined.* 2008. <https://www.semanticscholar.org/paper/Conventional-and-advanced-implant-treatment-in-the-Tawil-Younan/b3a92125478ce1d1bfa2730401935a5216c274e2>. Accessed March 29, 2019.
 45. Alshahrani A, Al Deeb M, Alresayes S, et al. Comparison of peri-implant soft tissue and crestal bone status of dental implants placed in prediabetic, type 2 diabetic, and non-diabetic individuals: a retrospective cohort study. *Int J Implant Dent.* 2020;6(1). doi:10.1186/s40729-020-00255-1
 46. Mellitus* TEC on the D and C of D. Report of the Expert Committee on the Diagnosis and Classification of Diabetes Mellitus. *Diabetes Care.* 1997;20(7):1183-1197. doi:10.2337/DIACARE.20.7.1183
 47. AA K. The antidiabetic action of camel milk in experimental type 2 diabetes mellitus: an overview on the changes in incretin hormones, insulin resistance, and inflammatory cytokines. *Horm Metab Res.* 46(6):404-411. <http://dx.doi.org/10.1055/s-0034-1368711>.
 48. Alsaadi G, Quirynen M, Michiles K,

- Teughels W, Komárek A, van Steenberghe D, al saadi A 2008 Impact of local and systemic factors on the incidence of failures up to abutment connection with modified surface oral implants. *J Clin Periodontol.* 2007;0(0):071127132039002-??? doi:10.1111/j.1600-051X.2007.01165.x
49. Diabetes and Oral Implant Failure: A Systematic Review - B.R. Chrcanovic, T. Albrektsson, A. Wennerberg, 2014.
50. Olson JW, Shernoff AF, Tarlow JL, Colwell JA, Scheetz JP, Bingham SF. Dental endosseous implant assessments in a type 2 diabetic population: a prospective study. *Int J Oral Maxillofac Implants.* 15(6):811-818. <http://www.ncbi.nlm.nih.gov/pubmed/11151579>. Accessed August 6, 2016.
51. Kayal RA, Tsatsas D, Bauer MA, et al. Diminished bone formation during diabetic fracture healing is related to the premature resorption of cartilage associated with increased osteoclast activity. *J Bone Miner Res.* 2007;22(4):560-568. doi:10.1359/jbmr.070115
52. Erlebacher A, Filvaroff EH, Ye JQ, Derynck R. Osteoblastic responses to TGF- β during bone remodeling. *Mol Biol Cell.* 1998;9(7):1903-1918. doi:10.1091/mbc.9.7.1903



ASDJ

Ain Shams Dental Journal