



Sweet pepper extracts using green technology and application of nanocapsule extracts in preparation of ketchup

Khaled F. Mahmoud^{1*}; Manal F. Salama¹; Azza A. Amin¹; Naglaa M. Abd El- Rahman²; Mona A. Ibrahim¹



¹ Department of Food Technology, National Research Centre (NRC), 12622 Dokki, Egypt

² Department of Green Chemistry, National Research Centre (NRC), 12622 Dokki, Egypt.

Abstract

Extraction yield with great concentration of sweet pepper has improved by using green technology that reduce environmental cost, and short duration. Results suggested that sweet pepper have higher content of radical scavenging activity and reducing power. Phenolic and flavonoids contents were (86.82 and 38.14 respectively) for Supercritical Fluid Extraction (SCF-CO₂) extracts and increased to (90.14 and 45.11 in their nano-capsules, followed by Ethanol extract (EE) and Microwave-Assisted Extraction (MAE). In HPLC analysis, chlorogenic acid was the largest phenolic compounds in MAE 12275.31 µg/g and Gallic acid was 648.45, followed by SCF-CO₂ extract being 342.11 µg/g. SCF-CO₂ nano-capsules recorded high total phenolic, total flavonoids contents, small nano-particles through TEM, more mortality for cancer cell lines under the study followed by MAE, and their stability were less than MAE. The result proved that encapsulation is a very important technique to protect the plant extract from any environmental conditions and aid in the release of these bioactive compounds in the target organs when incorporated in some functional foods. Functional foods produced in this work (ketchup) proved that the addition of 1% sweet pepper extracted by SCF-CO₂ followed by microwave were the most acceptable products from the consumers since they retain their release of these bioactive compounds in the target organs when incorporated in some functional foods.

Keywords: Green Emerging technology, conventional methods extraction, physiochemical properties, nano-encapsulation, cytotoxic effect, application

1 Introduction

Sweet pepper is fruit belongs to *Capsicum annuum* species. In recent years, scientists have turned towards antioxidants which play an important role to retard the free radical induced oxidative stress to body damage [1]. Polyphenols and flavonoids have gained growing interest as natural antioxidants since they can retard many chronic diseases and protect human body from free radical [2]. The great challenge is to use the most suitable technology for extracting these compounds. In this study the application of new emerging technologies i.e. Ultrasonic-Assisted Extraction (UAE), Microwave-Assisted Extraction (MAE) and Supercritical Fluid Extraction (SFE), in the extraction of sweet pepper are used as alternative to the conventional methods in the extraction of sweet pepper (*Capsicum annuum*). These extractions techniques with encapsulation and nano-emulsion as novel technology are promising and can enhance the bioactive contents by increasing their concentrations, the amount, yields, reduced processing times, environmental damage, bioavailability of components, consumption of organic solvents, and their stability during food processing. The use of these novel green technology have great potential in functional food market as safer product [3].

Carotenoids, phenolic compounds, capsaicinoids, capsinoids, vitamins and minerals are the main bioactive compounds present in *Capsicum* peppers [4, 5, 6].

Thus, phenolic compounds and their abundant group (Flavonoids and their glycoside derivatives) can be a good indicator of antioxidant activity in peppers [7, 8, 9, 10, 11, 6].

The use of dry sweet pepper (extracted by these new technology) containing these bioactive compounds in the formulation of functional foods is a new era to improve health disease status of the population, life style and quality.

The main goal of all food industries is to achieve the consumers' expectations in the final products by reducing the amount of organic solvent waste, quantity, cost and energy used in the food processing.

Therefore, the aim of this study is comparing the use of green emerging technology in sweet pepper as alternative to conventional extracting methods, studying the yield and antioxidant activities as well as their nano-capsulation, cytotoxic effect, stability and its application in Ketchup as functional food.

2. Materials and Methods

Materials

Sweet pepper (*Capsicum annuum*) was purchased from Egypt local markets at Dokki, Giza Governorate.

Methods

Conventional methods extraction

Water extraction

Fifty grams of dried sweet pepper were shaken in a water bath at 24 °C for 24 hours with 200 ml of distilled water. The supernatant following three separate extractions was

* Corresponding author e-mail: khaledfm69@yahoo.com; (Khaled F. Mahmoud).

Receive Date: 15 October 2023, Revise Date: 12 November 2023, Accept Date: 26 November 2023

DOI: 10.21608/EJCHEM.2023.242772.8743

©2024 National Information and Documentation Center (NIDOC)

collected, centrifuged, dialyzed, lyophilized and kept till usage at 4 °C. The weight of the sweet pepper water extract divided by the dry weight of the raw plants was used to calculate the percentage of water extract yield [12].

Ethanol Extraction

Dried sweet pepper ethanol extract was carried out according to the method of Sun *et al.*, [13]. Plant powder (200 g) was combined with 200 ml of 95% ethanol with careful stirring for 30 minutes in a water bath at 45°C. The supernatants were collected after numerous extractions and evaporated under vacuum at 45 °C before being kept at 4 °C until use. According to the maximum amount of dried plant, the percentage of sweet pepper production was estimated.

Green methods extraction

2.2.2.1. Supercritical fluid carbon dioxide (SCF-CO₂) Extraction

Dried sweet pepper (100 gm) was mixed with ethanol 15% (w/w) as co-solvent in a separate vessel and extracted by using a laboratory CO₂scale unit (Spe-ed TM SFE-2/2, Applied separations, Built in conjunction with the USDA1- USA) in National Research at 40 °C and 150 bar pressure. CO₂ apparatus was assessed by two vessels(300 ml), kept 30 min for complete contact between the sample and CO₂, after which the sample was collected[14]. The following formula was used to get the sweet pepper percentage yield:

$$\text{Yield (\%)} = 100 (W1/W2) \dots\dots\dots (1)$$

W1 is the weight in grams of the plant extracts, and W2 is the mass in grams of the dried, unprocessed plant powder.

Ultrasound-assisted Extraction (UAE)

The sample was stored at 4 °C until use after being sonicated in Ultra sonic water bath (Model Ud 150 SH3.8LQmade in U.S.A.) for 30 minutes at 40 °C with 50 g of dried sweet pepper after diethylether (300 ml) had evaporated [15].

Microwave-assisted Extraction (MAE)

Five grams of sweet pepper powder were extracted with 50 milliliters of ethanol in 80-milliliter capped vials using a mechanically adapted microwave oven (ETHOS 1600, Milestone, Sorisole, Italy) for 60 minutes at 40°C under pressure. After filtering, the extract was collected, cooled to ambient temperature, and then stored at 20 °C until analysis.

Determination of total phenol content (TPC)

According to the method described by Mythili *et al.* [16], the total phenolic content (TPC) of sweet pepper extracts and their nano-capsules were assessed using the Folin-Ciocalteu reagent. Total phenolic content are quantified as gallic acid equivalents (mg GAE/g dry extract) and contrasted with a blank using the same 20ul of clean water.

Determination of total flavonoid content (TFC)

Using a UV/visible spectrophotometer, the total flavonoid content (TFC) of sweet pepper extracts and their nano-capsules were assessed in accordance with the methods of Huang *et al.* [17], Ebrahimzadeh *et al.* [18], and Nabavi *et al.* [19]. At 415 nm, the mixture's absorbance was measured. The standard for the calibration curve was quercetin (µg/g).

Determination of radical scavenging activity

Radical scavenging activity of tested sweet pepper samples was tested using spectrophotometer at 517 nm according to the method of Burits and Bucar,[20].

$$\% \text{ DPPH radical scavenging activity} = (Ac - A_s) / A_c \times 100 \dots\dots(2)$$

Where As represents the sample's absorbance and Ac represents the control's absorbance in the absence of the sample.

Using 500 mg/ml, the radical scavenging activity of nano-capsules was assessed as above.

Reducing power (RP)

The Oyaizu method, developed in 1986 [21], was used to assess the reducing power (RP) of sweet pepper extracts. Using a spectrophotometer set at 700 nm, the absorbance of the tested substances was compared to that of BHT and ascorbic acid at room temperature. As mentioned previously, the decreasing power of nanocapsules was calculated using 500 mg/ml.

HPLC analysis

Using liquid chromatography (HPLC), the chemicals found in sweet pepper extracts were analyzed using 4.6 mm x 250 mm i.d., 5 m, Eclipse C18 column for the separation water (A) and 0.05% trifluoroacetic acid in acetonitrile (B) were the components of the mobile phase, which had a flow rate of 1 ml/min. The linear gradient was sequentially programmed into the mobile phase as follows: 0 minutes (82% A), 0-5 minutes (80% A), 5-8 minutes (60% A), 8 minutes (12%), 12 minutes (15%), and 15 minutes (82% A). At 280 nm, the multi-wavelength detector was observed. For every one of the sample solutions, 10 l of injection volume was used. The column was kept at a constant temperature of 35 °C [22].

Differential scanning calorimetry (DSC)

Using a differential scanning calorimeter (DSC), the thermal stability of sweet pepper extracts and their nano capsules was investigated using the method of Hazra *et al.* [23]. A temperature range of -150 to 300°C was used to compute the peak evaporation enthalpies, and the findings were compared with the estimated vaporization enthalpies of the main components.

Transmission Electron Microscopy (TEM)

Sweet pepper extracts morphological characteristics and their nano capsules were measured using TEM after air-dried at room temperature for 3 min. using the method of Abd-Elsalam and Alexei, [24].

Preparation of nano-capsules

Ultrasound and high-speed homogeniser (PRO, USA) were used to encapsulate sweet pepper extracts into nano using the methods of Vasiliki and Constantina, [25].

The encapsulation yield (EY) effectiveness of was measured according to Paviani *et al.* [14] method as follows:

$$\text{EY (\%)} = \frac{\text{Total weight of the sample after encapsulation}}{\text{Total weight of the sample before encapsulation}} \times 100 \dots(3)$$

Cytotoxic effect of nano- capsules

Cell feasibility was assessed using three cancer cell lines from the National Cancer Institute of Egypt (MCF-7 for breast cancer, HEPG2 for liver cancer, and HCT116 for colon cancer) suspended in DMEM-F12 media (for HePG2, MCF-7, and RPE-1) with one normal cell line (BJ1) [26].

Then, using a microplate multi-well reader and a reference wavelength of 620 nm, the absorbance was determined. The following formula was used to get the feasibility change percentage:

((Absorbance of extract/Absorbance of negative control) - 1) x 100..... (4)

Applications

Tomato ketchup fortified with nano-encapsule sweet pepper extracts

Tomato ketchup was prepared according to the method described by Sahin and Ozdemir, [27] with some modification. Tomato paste (350 gm) was mixed in an open pan with 0.47 gm spices (cloves, cinnamon, black pepper, and cardamom), 2.25 gm onion, 1 gm garlic powder, 44.5 gm sugar, 5.85 salt, 20.4 ml apple vinegar and 0.08 gm paprika powder then 0.5% of pectin was added to the mixture. The ketchup formula was divided into five samples, each was fortified with 1% sweet pepper extracted by water, ethanol, super critical fluid-carbon dioxide (SCF-CO₂) and microwave nano-capsules ketchup samples were sealed in glass jar, and stored at (20–22 °C) for 24 h until analyses.

Physical properties of Ketchup samples

The physical properties of ketchup samples were tested against pH, color as described by Schnell *et al.*, [28] using Hunter Lab colorimeter and water soluble dry matter (Brix°) using the method of Ranganna [29].

Sensory evaluation of tomato ketchup samples

All ketchup samples were sensory evaluated by fifteen trained panels using the method of Piggott, [30]. Panelists in three training sessions (1 hr each) were given a randomly coded samples. Sensory evaluation was given a nine point hedonic scales with (1 = the lowest or extremely dislike and nine = the highest or extremely like).

Statistical analyses

Data were reported as means standard deviation (n = 3) and Anova variance analysis with average comparison Duncan Multiple Range adjusted to 0.05 [31].

3. Results and Discussion

Samples extraction Yield

The extraction yields of sweet pepper were shown in (Figure 1). The highly percentage yield observed was for the extraction in water i.e. 11.52% followed by microwave, CO₂, ultrasound and solvent i.e., 10.57, 9.58, 9.05 and 8.94% respectively. Results obtained showed approximately similar in total yields between supercritical fluid CO₂, microwave-assisted and ultrasound-assisted extraction.

Antioxidant activity of sweet pepper extracts and their nano-capsules

DPPH radical scavenging

Five distinct extraction techniques i.e. water, ethanol, CO₂, microwave, and ultrasound were investigated in concentrations ranging from 100 to 500 mg/ml. to measure the antioxidant activity of sweet pepper extracts and their nano-capsules using DPPH radical scavenging at 517 nm (Table 1).

Results showed that sweet pepper sample had concentration-dependent increases in scavenging potential. As at a concentration of (500 mg/ml) the scavenging action of pepper was 36.92, 31.28, 30.45 and 24.09% in CO₂ followed by, microwave, solvent and ultra sound respectively. Previous studies have reported that using a high concentration (500 mg/mL) of pepper fruits showed increases in scavenging activity [32].

Sweet pepper extracts nano-capsules (Table 1) showed that nano encapsulation, breaks the components into smaller particles and distributing them evenly throughout the mixture and that led to an increase in DPPH in the same order before nano-capsules. Our data agreed with that mention by Sahba and Dariush [33] who stated that the antioxidant activity increased by encapsulations which enhance the bioavailability of natural antioxidants aside with the reduction of the biological system's leakage and volatility.

Table (1). DPPH scavenging activities of sweet pepper extracts and their nano-capsules

Types of Extraction	Conc. mgmL ⁻¹	DPPH radical scavenging %	
		Extract	Nano-capsules extract
Water extract (Conventional method)	100	8.25±0.24 ^a	11.38±0.46 ^{ab}
	200	11.08±0.68 ^{ab}	16.27±1.04 ^{ab}
	300	14.67±1.24 ^{ab}	18.69±1.28 ^b
	400	16.28±1.33 ^b	20.25±1.39 ^b
	500	20.19±1.58 ^{bc}	24.67±2.11 ^c
Solvent extract (Conventional method)	100	12.29±0.35 ^{ab}	15.93±1.58 ^{ab}
	200	18.17±1.26 ^b	21.55±1.93 ^b
	300	23.28±1.87 ^{bc}	27.12±2.28 ^{bc}
	400	27.31±1.83 ^{bc}	31.22±2.34 ^c
	500	30.45±2.11 ^c	35.17±2.56 ^c
*SCF-CO ₂ extract (Green method)	100	15.08±1.04 ^{ab}	19.05±1.27 ^b
	200	19.28±1.38 ^b	23.47±1.75 ^{bc}
	300	25.32±1.76 ^{bc}	29.81±2.00 ^c
	400	30.25±2.13 ^c	34.68±2.24 ^c
	500	36.92±2.46 ^d	40.17±3.27 ^d
*UAE extract (Green method)	100	9.13±0.48 ^a	11.28±0.83 ^{ab}
	200	12.36±0.83 ^{ab}	16.87±0.94 ^{ab}
	300	17.11±1.23 ^{ab}	20.69±1.24 ^{bc}
	400	20.39±1.35 ^b	25.48±1.67 ^{bc}
	500	24.09±1.64 ^{bc}	28.97±2.23 ^{bc}
*MAE (Green method)	100	13.67±1.05 ^{ab}	16.87±1.42 ^{ab}
	200	19.18±1.24 ^b	23.68±2.14 ^{bc}
	300	23.35±1.36 ^{bc}	28.61±2.46 ^{bc}
	400	27.28±1.69 ^{bc}	31.57±2.44 ^c
	500	31.28±2.03 ^c	36.88±2.71 ^d

Where; *SCF-CO₂: Supercritical Fluid Carbon dioxide, *UAE: Ultrasound-assisted extraction, *MAE: microwave –assisted extraction

Reducing Power

Table (2) showed that the highest reducing power results for sweet pepper extract were observed by SCF-CO₂ 0.220mgmL⁻¹, followed by microwave 0.208. The use of water and UAE lower the absorbance at 700nm than the CO₂. In general CO₂ give the higher reduction of active radicals. Reducing power of sweet pepper extracts and their nano-capsules, relatively increased with graded concentrations from (100 to 500 mgmL⁻¹), which means that the electron-donating capability of all of the examined samples is dose dependent. The lowering power of water extract at the same dose (500 mgmL⁻¹) was lower, i.e. 0.168 for the extract and 0.16 for the nano-capsule, respectively. The second and third orders go to sweet pepper MAE and solvent extracts.

Total Phenolic Contents (TPC)

Results in Table (3) illustrated that SCF-CO₂ extracts TPC had highest value 86.82 mg GAE/100g followed by ethanol extraction 81.2mg GAE/100g, while the lower was for water extract 35.23mg GAE/100g followed by Ultrasound. Also, microwave is one of the greenest promising methods in terms of extraction quantity and containment of phenolic content, it recorded 76.38 exceeded to 85.68 mg GAE/g extract in nano-capsules. Our results are contrary to the findings of Ahmad *et al.*, [34] who reported a higher TPC of water extract (27.68 mg GAE/g DW), as compared to the ethanol extract 17.1 mg GAE/g DW. TPC of sweet pepper extracts nano-capsules following the same trend. These data agreed with that mentioned by Kanatt *et al.*, [35] who illustrated that the stability of the supplemented bioactive component needs nano technique with encapsulation technology to protect them during processing and help in their control release under various conditions.

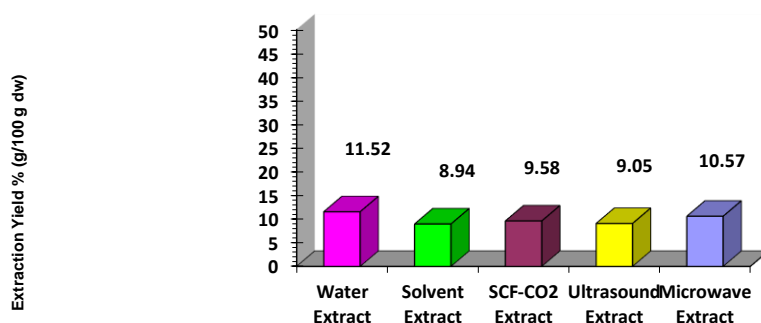


Figure (1). Total yield (%) of sample extracts

Table (2). Reducing power activity of sweet pepper extracts and their nano-capsules

Types of Extraction	Conc. mgmL ⁻¹	Reducing power Absorbance at 700 nm	
		Extract	Nano-capsules extract
Water extract (Conventional method)	100	0.123±0.01 ^a	0.129±0.01 ^a
	200	0.137±0.01 ^a	0.145±0.01 ^{ab}
	300	0.146±0.01 ^{ab}	0.152±0.01 ^{ab}
	400	0.154±0.02 ^{ab}	0.159±0.01 ^{ab}
	500	0.161±0.02 ^b	0.168±0.01 ^b
Solvent extract (Conventional method)	100	0.162±0.02 ^b	0.169±0.01 ^b
	200	0.173±0.02 ^b	0.181±0.02 ^{bc}
	300	0.184±0.02 ^{bc}	0.192±0.02 ^{bc}
	400	0.193±0.02 ^{bc}	0.199±0.02 ^{bc}
	500	0.201±0.02 ^c	0.208±0.02 ^c
*SCF-CO ₂ extract (Green method)	100	0.195±0.01 ^{bc}	0.203±0.02 ^c
	200	0.202±0.01 ^c	0.209±0.02 ^c
	300	0.209±0.02 ^c	0.216±0.02 ^c
	400	0.214±0.02 ^c	0.221±0.02 ^c
	500	0.220±0.02 ^d	0.228±0.02 ^d
*UAE extract (Green method)	100	0.157±0.01 ^{ab}	0.163±0.01 ^b
	200	0.162±0.01 ^b	0.168±0.01 ^b
	300	0.167±0.01 ^b	0.173±0.01 ^b
	400	0.176±0.01 ^b	0.181±0.02 ^{bc}
	500	0.182±0.02 ^{bc}	0.189±0.02 ^{bc}
*MAE extract (Green method)	100	0.175±0.01 ^b	0.182±0.02 ^{bc}
	200	0.182±0.02 ^{bc}	0.188±0.02 ^{bc}

300	0.195±0.01 ^{bc}	0.200±0.02 ^c
400	0.201±0.01 ^c	0.209±0.02 ^c
500	0.208±0.01 ^c	0.215±0.02 ^c

Where; *SCF-CO₂ : Supercritical Fluid Carbon dioxide; *MAE: Microwave-Assisted *UAE: Ultrasound-assisted extraction

Table (3): Total phenolic contents (TPC) of extracts and their nano-capsules

Extract types	Total phenolic contents (TPC) (mg GAE /g extract)	
	Extracts	Nano-capsules extract
Water extract (conventional method)	35.23±1.58 ^a	39.82±1.38 ^a
Ethanol extract (conventional method)	81.20±3.45 ^c	82.55±3.54 ^{bc}
*SCF-CO ₂ extract (green method)	86.82±3.68 ^c	90.14±3.67 ^d
*UAE extract (green method)	63.43±2.37 ^b	68.02±2.44 ^b
*MAE extract (green method)	76.38±2.81 ^{bc}	85.68±2.16 ^c

Where; *SCF-CO₂: Supercritical Fluid Carbon dioxide extraction; *MAE: Microwave-Assisted extraction; *UAE: Ultrasound-assisted extraction, MAE: microwave assist extraction

Total Flavonoids Contents (TFC)

Results in Table (4) revealed that SCF-CO₂ extract of sweet pepper exhibited higher TFC 38.14, followed by ethanol, MAE, UAE and water being 36.88, 36.66, 21.46 and 9.37 mg QE/g, respectively. SCF-CO₂ extract nano-capsules showed increase in flavonoid content from 38.14 in the extract to 45.11 at a percentage of about 18%. Due to the bulk heating irradiation properties of the MAE, an innovative

green technology, increased flavonoid content is produced before and after nano-capsules 36.66 and 40.81(11%) at a faster rate. The cell membrane swells and ruptures under the influence of microwave, releasing the bioactive into the aqueous ethanol solvent, according to Jin *et al.* [36]. By merging conventional techniques with those from the UAE and water, the process was made superior to the other two approaches solvent extraction with microwave irradiation.

Table (4): Total flavonoids content (TFC) of extracts and their nano-capsules

Extract types	Total flavonoids content (TFC) mg QE/ g extract	
	Extracts	Nano-capsules extract
Water extract (conventional method)	9.37±	12.64±
Ethanol extract (conventional method)	36.88±	40.24±
*SCF-CO ₂ extract (green method)	38.14±	45.11±
*UAE extract (green method)	21.46±	25.52±
*MAE extract (green method)	36.66±	40.81±

Where; *SCF-CO₂: Supercritical Fluid Carbon dioxide; *UAE: Ultrasound-assisted extraction, *MAE: microwave extraction

HPLC analysis of sweet pepper extracts

HPLC for sweet pepper extract Tables (5), identified chlorogenic acid as the largest phenolic compounds in MAE, while Gallic acid was the second largest compound 841.15µg/g followed by UAE extract being 648.45 and CO₂ 342.11 µg/g respectively. While the order of richness of other phenolic compounds with the significant amount was in the order of kaempferol > Gallic acid > ellagic acid in UAE and naringenin > chlorogenic acid > ellagic acid in CO₂ and ethanol extract.

Accumulated polyphenol content in sweet pepper is essential and depends on the ripening stage and genotype

[37]. So, obtained results related to the identification of phenolic compounds of sweet pepper extracts were not so easy to compare with literature data. However, our data lightly in agreement with those of Mennat *et al.*, [38], who reported that there is some Egyptian pepper contained higher phenolic compounds than in other depend on their content of pyrogallol, catechin, catechol, ellagic acid, Gallic acid and chlorogenic acid. Ahmad *et al.*, [34] reported that sweet pepper samples showed higher phenolic compounds 178 to 384.9 mg per 100 gram chlorogenic acid as compared to red and green peppers

Table (5): HPLC analysis of sweet pepper extracts

Components	Conc. ($\mu\text{g/ml}=\mu\text{g/g}$)				
	Conventional method		*SPUAE	Green method	
	*SPWE	*SPEE		*SPSCF-CO ₂	*SPMAE
Gallic acid	219.63	239.20	648.45	342.11	841.15
Chlorogenic acid	41.18	126.92	79.53	145.88	12275.31
Catechin	9.34	0.00	4.73	0.00	422.69
Methyl gallate	0.71	5.66	1.45	9.65	18.37
Caffeic acid	7.22	4.96	18.21	7.26	24.09
Syringic acid	1.88	12.31	11.61	19.34	127.72
Pyro catechol	2.14	0.00	0.00	0.00	0.00
Rutin	3.46	28.95	29.23	38.92	80.47
Ellagic acid	23.81	64.58	138.37	76.35	14.42
Coumaric acid	0.00	1.55	0.00	3.68	17.80
Vanillin	0.06	1.57	0.00	2.96	0.00
Ferulic acid	4.95	18.48	7.29	23.68	0.00
Naringenin	19.84	155.90	62.30	169.34	0.00
Taxifolin	5.34	0.00	60.46	0.00	0.00
Cinnamic acid	1.13	13.73	58.43	23.66	10.76
Kaempferol	0.84	0.00	676.60	2.31	0.00

Where; *SPWE: sweet pepper water extract; *SPEE: sweet pepper ethanol extract; *SPUAE: sweet pepper Ultrasound-assisted extraction, *SPSCF-CO₂: sweet pepper Supercritical Fluid Carbon dioxide extraction; *SPMAE: sweet pepper microwave-assisted extraction.

Transmission Electron Microscopy (TEM) of sweet pepper extracts and their nano-capsules

The transmission electron microscopy (TEM) characteristics (Figures 2A and B) was used to investigate the morphology of sweet pepper extracts and their nano-capsules particles sizes. Sweet pepper extracts Figure (2A) showed more spherical shape in water, ethanol, SCF-CO₂ and MAE except that extracted by ultrasound which showed indefinite shape with diameters (3.24-6.12 μm), (102.24- 213.25 nm), (0.92-2.16 μm), (131.53-186.11nm) and (146.83-189.11nm) respectively. The TEM of sweet pepper extracts nano-capsules Fig (2B) followed the same spherical shape as in water, ethanol, SCF-CO₂ and MAE extracts except that extracted by ultrasound which showed indefinite shape with diameters (29.15-35.08 nm), (18.87- 35.40 nm), (26.31- 72.62 nm), (13.71-63.42 nm) and (1.82-4.43nm) respectively.

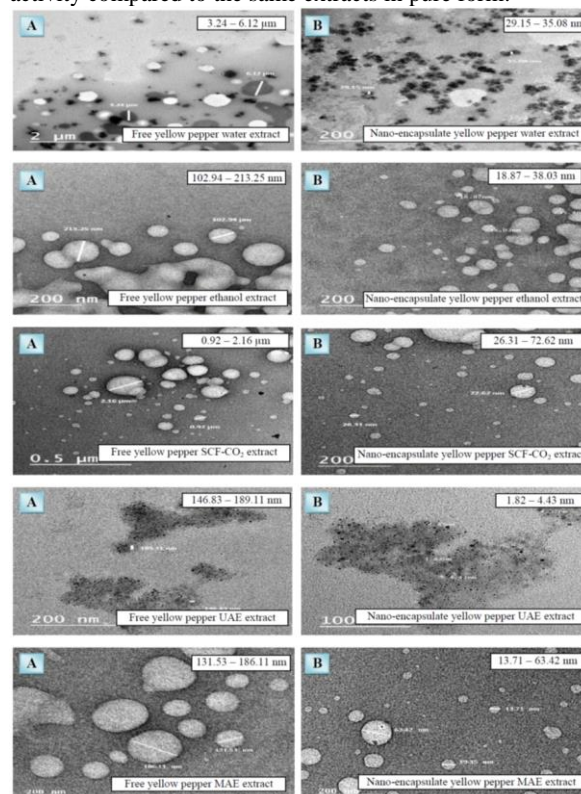
Differential Scanning Calorimetry (DSC) of sweet pepper extracts and their nano-capsules

The DSC curves of sweet pepper ethanolic extract Figure (3A) showed sharp endothermic peaks present at 42.3 °C. Also, SCF-CO₂ extract had three small sharp endothermic peaks at melting point 35.5, 37.6 and 42.2 °C respectively. It has been attributed more stable for its decomposition.

Furthermore, UAE extract had two small peaks at around 28.9 and 32.8 °C and one sharp exothermic peak at 47 °C, probably due to a solid restoration before melting. Also, MAE had wide endothermic peaks at 73.11 melting point. The endothermic peaks pointed to the melting boiling and the latter can be attributed to its degradation. While sweet pepper SCF -CO₂ extract nano-capsules Fig (3B) showed also sharp endothermic peak with two melting point and one for ethanolic, and UAE and MAE i.e. (113.1, 126.8, 142.4, 104.3 °C and 171.9) respectively.

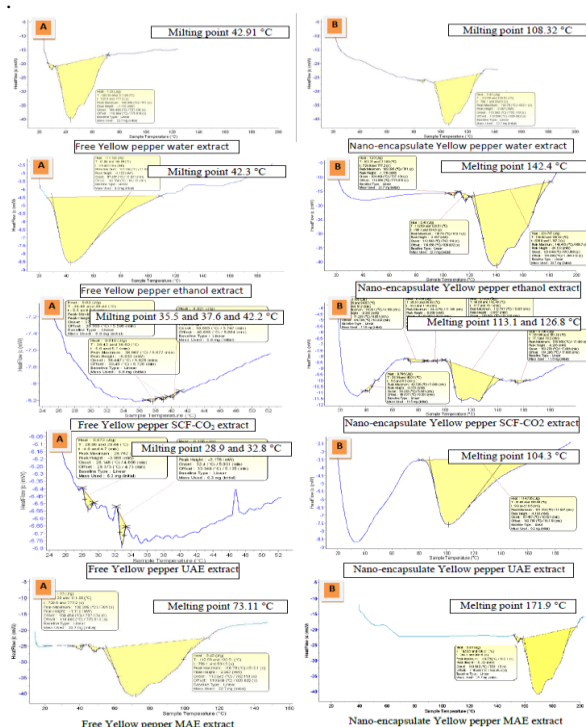
The results of sweet pepper extracts nano-capsules DSC showed higher resistance to temperature observed, and

are in agreement with reported by Batra *et al.*, [39] who stated that the encapsulation of the extracts in spontaneous emulsification method increased the antioxidant and temperature of their initiation oxidation activity compared to the same extracts in pure form.



A: TEM images of sweet pepper extracts before encapsulation, B: TEM images of sweet pepper extract capsules

Figures (2A,B): TEM images of sweet pepper extracts and nano-capsules



A: DSC of sweet pepper extracts before encapsulation

B: DSC of sweet pepper extract capsules

Figures (3A,B): DSC analysis of sweet pepper extracts and nano-capsules

Cytotoxic effect of sweet pepper extracts and their nano-capsules

Table (6): Cytotoxic activity test of sweet pepper extracts nano-capsules on HePG 2, PACA2 and MCF7(normal retina cell line)

Sample Code	IC ₉₀ (µg/ml)	Remarks (% mortality at 100µl/ml)		
		HePG 2	PACA2	MCF7
*SPWE	46.00	0.8 %	4.6%	2.1%
*SPEE	46.00	3.4%	26.5%	15.9%
*SP SCF-CO ₂	46.00	5.9%	39.6%	25.6%
*SPUAE	46.00	2.6%	23.8%	10.8%
*SPMAE	46.00	2.9%	37.9%	16.2%
DMSO	-----	5%	1%	3%
Negative control	-----	0%	0%	0%

Where; *SPWE: sweet pepper water extract; *SPEE: sweet pepper ethanol extract; *SPUAE: sweet pepper Ultrasound-assisted extraction, *SPSCF-CO₂: sweet pepper Supercritical Fluid Carbon dioxide extraction; *SPMAE: sweet pepper microwave-assisted extraction; IC₅₀: Lethal concentration of the sample which causes the death of 50% of cells in 48 hrs; IC₉₀: Lethal concentration of the sample which causes the death of 90% of cells in 48 hrs

Sensory evaluation

Table (7) and Figure (4) shows the sensory evaluation of ketchup with different sweet pepper extracts nano-capsules.

Significant differences ($p < 0.05$) were observed in all

Table (7). Sensory evaluation of Ketchup samples fortified with 1 % sweet pepper extracts nano-capsules

Samples	Color	Taste	Aroma	Texture	Overall acceptability
Control	9.21±0.1 ^a	8.67±0.2 ^a	8.95±0.1 ^a	8.66±0.1 ^a	8.68±0.1 ^a
1 % SPWEN*	8.51±0.2 ^{ab}	8.12±0.2 ^b	8.41±0.2 ^{ab}	8.10±0.2 ^b	8.22±0.2 ^b
1 % SPEEN*	8.62±0.2 ^{ab}	8.34±0.2 ^{ab}	8.45±0.2 ^{ab}	8.23±0.2 ^{ab}	8.31±0.2 ^{ab}
1 % SPSCF-SO ₂ EN*	9.20±0.2 ^a	8.95±0.2 ^a	8.95±0.2 ^a	8.70±0.2 ^a	9.00±0.2 ^{ab}
1 % SPUAEN*	8.15±0.2 ^b	8.26±0.1 ^{ab}	8.16±0.1 ^b	8.12±0.1 ^b	8.14±0.1 ^b
1 % SPMAEN*	8.99±0.2 ^a	8.90±0.2 ^a	8.90±0.2 ^a	8.69±0.2 ^a	8.80±0.2 ^{ab}

Where; SPWEN*: Ketchupfortified with 1% sweet pepper water extract nano-capsule; SPEEN*: Ketchupfortified with 1% sweet pepper ethanol extract nano-capsule; SPSCF-SO₂EN*: Ketchupfortified with 1% sweet pepper SCF-SO₂ nano-capsule; SPUAEN*: Ketchupfortified with 1% sweet pepper ultrasonic extract nano-capsule; SPMAEN*: Ketchupfortified with 1% sweet pepper microwave extract nano-capsule

Data in Table (6) indicated that the nano-capsules exhibited potent lethal inhibitory effect against the examined human cell lines (i.e. HePG2, PACA2 and MCF7) with several dilutions (100 to 0.78µg/ ml). The growth inhibition of tested samples after incubation for 48 hrs was tested. Results showed that the maximum inhibition was achieved after 48 hrs. Results also, show that 90 % death of cell was observed in all nano- capsules of SCF-CO₂.

The mortality rate was highest for PACA2 treated, then MCF7 using the same extraction technique, with respective mortality rates of 39.6 and 25.6%.

Human cancer cells treated with nano-capsules experienced morphological collapse, supporting their potent anticancer effect. Our findings supported Kurnijasanti and Fadholly, [40] observation that *Capsicum annum L.* is an anticancer agent.

From the above results the use of Ethanol, SCF-CO₂ and MAE extracts nano-capsules will be highlight in the application of ketchup as functional foods due to their physiochemical properties.

Applications

Ketchup fortified with sweet pepper extracts nano-capsules

Food industry usually added functional ingredients which have potential health benefits to enhance the texture, flavor, color, or shelf-life of food products. Nano-encapsulation of sweet pepper extracts stability during processing and storage is important for successful preparation of functional foods.

recipes in taste, appearance, texture, flavor and over all acceptability. The physical properties are one of the factors that will attract customers to buy and accept it.

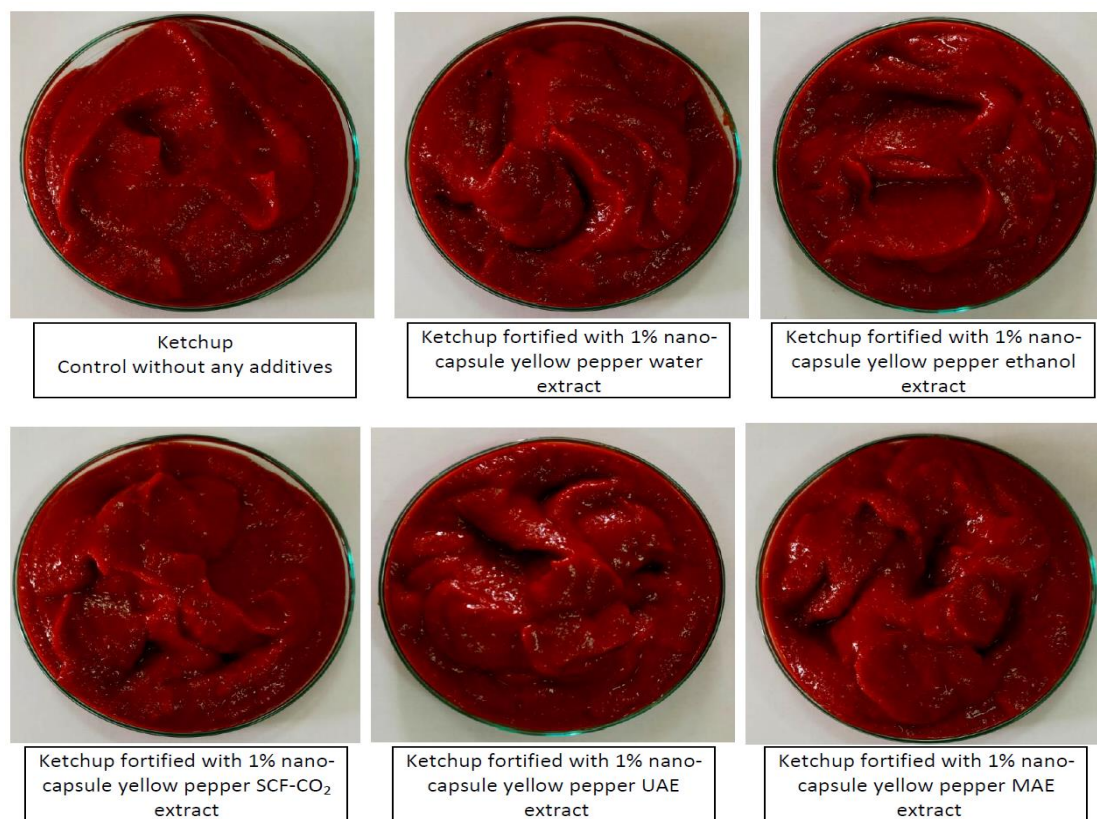


Fig. (4). Ketchup products enriched with sweet pepper extracts nano-capsule

Physical properties of fortified tomato ketchup samples

The results of the physical properties are shown in Table (8). It is clear that the moisture content of ketchup Samples fortified with sweet pepper alcoholic, carbon dioxide, ultrasound and microwave extracts nano-capsules, were varied between 64.35 and 64.12 %. The present results are in agreement with the results showed by Torbica *et al.*, [41] who stated that moisture content ranged from 67.42% to 79.02%. Thus the lower moisture content in the fortified ketchup samples than the control was accordance with Sharoba, *et al.* [42] for Egyptian tomato sauce. Also minimal shelf stability was achieved with high moisture content [43].

Among the parameters analyzed for the assessment of tomato ketchup quality, pH is a very important factor due to the acidity that affect the thermal processing conditions required for producing safe products. Tomato ketchup samples have a pH value ranged between 4.06 in control sample and 4.04 in all fortified ketchup samples. These results are in accordance with Anthon *et al.*, [44], who stated that pH greatly affect the quality of the final product for both types of ketchup.

Another factor that affect ketchup fortified with sweet pepper extracts nano-capsules is its total solids content

(Brix°). The higher the percentage of Brix°, the lower the activity of water (a_w) as found by Porretta and Birzi, [45], that prevents the growth of diseases that cause microorganisms in the innovative ketchup sample compared to a commercial sample.

There was a significant ($p < 0.05$) decreasing of lightness (L^*). Lightness in food is related with many factors, including the concentration of pigments present. Addition of 1% sweet pepper extracts nano-capsules led to significantly increase (< 0.05) in redness (a^*) in all ketchup fortified samples when compared to control sample. This may be due to nano-encapsulation that protects ketchup from oxidation. In the case of sweetness, results showed that there were an increase in sweetness (b^*) by (< 0.05) were the value ranged (16.14, 16.15, 16.17, 16.14 and 16.16) for water, alcohol, super critical, ultrasound and microwave extracts nano-capsules respectively when compared to control samples. These results proved that the sweetness of food was increased with using green emerging technologies when compared to the conventional ones [46].

Table (8): Comparison of pH, Brix° and color values (L*, a* and b*) of ketchup samples fortified with sweet pepper extracts nano-capsules

Ketchup samples types	Parameter					
	Moisture %	pH	Brix°	color values		
				L*	a*	b*
Control	64.35±2.1 ^a	4.06±0.3 ^a	29.85±3.1 ^a	39.88±3.5 ^a	29.25±3.0 ^a	16.11±1.3 ^a
Ketchup fortified with SPWEN*	64.14±2.1 ^a	4.04±0.3 ^a	29.43±3.2 ^{ab}	39.02±3.6 ^c	29.27±3.0 ^a	16.14±1.3 ^a
Ketchup fortified with SPEEN*	64.13±2.1 ^a	4.04±0.3 ^a	29.23±3.2 ^b	39.16±3.4 ^{ab}	29.28±3.0 ^a	16.15±1.3 ^a
Ketchup fortified with SPSCF-CO ₂ EN*	64.13±2.1 ^a	4.04±0.3 ^a	29.63±3.1 ^{ab}	39.05±3.5 ^b	29.30±3.0 ^a	16.17±1.3 ^a
Ketchup fortified with SPUAEN*	64.12±2.1 ^a	4.04±0.3 ^a	29.43±3.2 ^{ab}	39.04±3.4 ^b	29.26±3.0 ^a	16.14±1.3 ^a
Ketchup fortified with MAEN*	64.13±2.1 ^a	4.04±0.3 ^a	29.13±3.2 ^c	39.17±3.3 ^{ab}	29.28±3.0 ^a	16.16±1.3 ^a

Where; Numeric description of color using L*a*b* CIELAB color space; L* (lightness or darkness) ranges from black (0) to white (100); a* color direction in red (a* > 0) or green (a* < 0); b* color direction in sweet (b* > 0) or blue (b* < 0); SPWEN*: Ketchup fortified with 1% sweet pepper water extract nano-capsule; SPEEN*: Ketchup fortified with 1% sweet pepper ethanol extract nano-capsule; SPSCF-SO₂EN*: Ketchup fortified with 1% sweet pepper SCF-SO₂ nano-capsule; SPUAEN*: Ketchup fortified with 1% sweet pepper ultrasonic extract nano-capsule; SPMAN*: Ketchup fortified with 1% sweet pepper microwave extract nano-capsule

4. Conclusions and Prospects

Today, great interest directed towards plants bioactive compounds extracted by novel green technology to build up strong immune system.. Functional food market has expanded over the years, due to consumers demand for healthy food products, reducing the use of synthetic preservatives and improves the products quality [47].

This study proved that SCF-CO₂ extract of all plant samples yielded a high yield, total phenolic content, total flavonoids content and antioxidants activity followed by microwave and ethanolic extraction. Nano-encapsulation of sweet pepper extracts with their highly content of phenolic content enables the minimally invasive delivery of sustained concentrations to a particular site. The future of natural compounds nano-encapsulation such natural compound (i.e. polyphenols) is encouraging for enhancing the effectiveness of pharmaceuticals and functional foods and maximizing the usage of these bioactives' health advantages.

Ketchup (1%) which was tried after number of experiments with different concentrations) incorporated with SCF-CO₂ sweet pepper extract nano-capsules had higher values of color, taste, aroma, appearance, odor, texture and overall acceptability than other extracts nano-capsules.

Supercritical Fluids CO₂ followed by microwave extraction (considering as green emerging technologies) is highly efficient technique that provides good yields and preserves the physico-chemical characteristics of the extracts. They could be with nano-encapsulation good technique to preserve antioxidant activities, total phenolic and flavonoid compounds during food processing. Plant extracts with their bioactive compounds could be used in a variety of industries, including the food, pharmaceutical, and cosmetic ones. In the latter, it might take the role of the synthetic antioxidant now being used to combat the harmful effects of synthetic additives on public health.

Funding

This work was supported and funding by National Research Center (In House Project) (project No.: 12020213)

Data Availability

Data sharing is not applicable to the main text. Data in the supplementary figures are available on reasonable request from the corresponding author.

COMPETING INTERESTS

The Authors declare no Competing Financial or Non-Financial Interests

Acknowledge

The cytotoxic activity test (*In vitro* bioassay on human tumor cell lines) was conducted and determined by the

Bioassay-Cell Culture Laboratory, National Research Centre, El-Tahrir St., Dokki, Giza, PN: 12622, Egypt

5. References

- [1] Ozsoy, N., Can A., Yanardag R., and Akev N. (2008). Antioxidant activity of *Smilax excelsa* L. leaf extracts. *Food Chem.*, 110, 571-583. <https://doi.org/10.1016/j.foodchem.2008.02.037>
- [2] Göktürk, B.N., Özkan G. and Yaşar S. (2007). Evaluation of the antiradical and antioxidant potential of grape extracts. *Food Control*, 18(9): 1131-1136. <https://doi.org/10.1016/j.foodcont.2006.06.011>
- [3] Majid I., Khan, S., Aladel, A., Hussain Dar A., Adnan, M. and Khan, I. (2023). Recent insights into green extraction techniques as efficient methods for the extracting of bioactive components and essential oils. *Cyta-Journal of Food*, 21, 1, 101-114. <https://doi.org/10.1080/19476337.2022.2157492>
- [4] Deepaa, N., C. Kaura, B. Singhb and H.C. Kapoor. (2006). Antioxidant activity in some red sweet pepper cultivar. *Journal of Food Composition and Analysis* 19: 572-578. <https://doi.org/10.1016/j.jfca.2005.03.005>
- [5] Materska, M. and I. Perucka. (2005). Antioxidant activity of the main phenolic compounds isolated from hot pepper fruit (*Capsicum annum* L.). *Journal of Agriculture and Food Chemistry* 53: 1750-1756.
- [6] Aguiar, A. C., Machado, A. P. F., Angolini, C. F. F., Morais, D. R., Baseggio, A. M., Eberlin, M. N., and Martínez, J. (2019). Sequential high-pressure extraction to obtain capsinoids and phenolic compounds from biquinho pepper (*Capsicum chinense*). *The Journal of Supercritical Fluids*, 150, 112-121. <https://doi.org/10.1016/j.supflu.2019.04.016>
- [7] Balasundram, N., Sundram, K. and Samman, S. (2006) Phenolic Compounds in Plants and Agri-Industrial By-Products: Antioxidant Activity, Occurrence, and Potential Uses. *Food Chemistry*, 99, 191-203. <https://doi.org/10.1016/j.foodchem.2005.07.042>
- [8] Morales-Soto, A., María A.G., García-Salas P., Segura-Carretero A., and Fernández-Gutiérrez A. (2013). High-performance liquid chromatography coupled to diode array and electrospray time-of-flight mass spectrometry detectors for a comprehensive characterization of phenolic and other polar compounds in three pepper (*Capsicum annum* L.) samples. *Food Research International*, 51: 977-984. <https://doi.org/10.1016/j.foodres.2013.02.022>
- [9] Park, J.H.; Jeon, G.I.; Kim, J.M. and Park, E. (2012). Antioxidant activity and antiproliferative action of

- methanol extracts of different colored bell peppers (*Capsicum annuum* L.). *Food Science and Biotechnology*, 21, 2, 543-550. <https://link.springer.com/article/10.1007/s10068-012-0069-2>
- [10] Marin, A., F. Ferreres, F. A. Tomas-Barberan and M. I. Gil. (2004). Characterization and quantification of antioxidant constituents of sweet pepper (*Capsicum annuum* L.). *Journal of Agricultural and Food Chemistry* 52: 3861–3869. <https://doi.org/10.1021/jf0497915>
- [11] Jeon G., Cho Y., Lee S., Kim Y., Oh M., Jeong H. and Lee J. (2012). Antioxidant and antiproliferative properties of hot pepper (*Capsicum annuum* L.) seeds. *Journal of Food Biochemistry*, 36: 595–603. <https://doi.org/10.1111/j.1745-4514.2011.00571.x>
- [12] Suzuki, I. (1990). In H. Tanaka; H. Yajima; H. Fukuda; H. Sezaki; K. Koga; M. Hirose and T. Nakajima (Eds.), *pharmaceutical research and development* (pp. 227 – 241). Tokyo: Hirokawa Publishing Co.
- [13] Sun, T., Xu Z., Wu C.T., Janes M., Prinyawiwatkul W., No H.K.. (2007). Antioxidant activities of different colored sweet bell peppers (*Capsicum annuum* L.). *J Food Sci*, 72: S98- 102. <https://doi.org/10.1111/j.1750-3841.2006.00245.x>
- 2 [14] Paviani, L.C., Saito E. Dariva C. Marcucci A M. C.. Sánchez-Camargo P. and Cabral F. A. (2012). Supercritical CO₂ extraction of raw propolis and its dry ethanolic extract. *Braz. J. Chem. Eng.* 29 (2): 243-251. <https://doi.org/10.1590/S0104-66322012000200005>
- [15] Vinatoru, M., Maricela T., Otilia R., Filip P. I., Lazurca D., and Mason T. J. (1997). The use of ultrasound for the extraction of bioactive principles from plant materials. *Ultrasonics Sonochemistry* 4: 135-139. [http://dx.doi.org/10.1016/S1350-4177\(97\)83207-5](http://dx.doi.org/10.1016/S1350-4177(97)83207-5)
- 3 [16] Mythili, K., Reddy, C. U., Chamundeeswari, D. and Manna, P. K. (2014). Determination of total phenol, alkaloid, flavonoid and tannin in different extracts of *Calanthe triplicate*. *J. Pharmacog. Phyto.*, 2, 40-44. <http://dx.doi.org/10.3329/dujps.v14i1.23733>
- [17] Huang, D., Lin C., Chen H. and Lin Y. (2004). Antioxidant and antiproliferative activities of sweet potato (*Ipomoea batatas* [L.] Lam ‘Tainong 57’) constituents. *Bot. Bull. Acad. Sin.*, 45: 179-186. <https://www.researchgate.net/publication/244478484>
- [18] Ebrahimzadeh, M. A., Nabavi, S. M., Nabavi, S. F., Bahramian, F. and Bekhradnia, A. R. (2010). Antioxidant and free radical scavenging activity of *H. officinalis* L. Var. *angustifolius*, *V. odorata*, *B. hyrcana* and *C. speciosum*. *Pakistan Journal of Pharmaceutical Sciences*, 23(1): 29-34. <https://www.researchgate.net/publication/41000537>
- [19] Nabavi, S.M., Ebrahimzadeh M.A., Nabavi S.F., Fazelian M, and Eslami B. (2009). In vitro Antioxidant and Free Radical Scavenging Activity of *Diospyros lotus* and *Pyrus boissieriana* growing in Iran. *Phcog Mag* 5(18):122–126.
- [20] Burits, M., Bucar, F., (2000). Antioxidant activity of *Nigella sativa* essential oil. *Phytother Res.* 14 (5), 323–328. DOI: [10.1002/1099-1573\(200008\)14:5<323::aid-ptr621>3.0.co;2-q](https://doi.org/10.1002/1099-1573(200008)14:5<323::aid-ptr621>3.0.co;2-q)
- [21] Oyaizu, M. (1986). Studies on products of browning reaction prepared from glucosamine, *Jpn J of Nutr.* 44, 307–15. DOI: [10.5264/eiyogakuzashi.44.307](https://doi.org/10.5264/eiyogakuzashi.44.307)
- [22] Čulina, P., Cvitković, D., Pfeifer, D., Zorić, Z., Repajić, M., ElezGarofulić, I., and Pedisić, S. (2021). Phenolic profile and antioxidant capacity of selected medicinal and aromatic plants: Diversity upon plant species and extraction technique. *Processes*, 9(12), 2207.
- [23] Hazra, A., Alexander K., and Riga A. (2004). Characterization of some essential oils and their key components. *Journal of Thermal Analysis and Calorimetry*, Vol. 75: 317–330. DOI: [10.1023/B:JTAN.0000017352.86803.6d](https://doi.org/10.1023/B:JTAN.0000017352.86803.6d)
- [24] Abd-Elsalam, K.A. and Alexei, R.K. (2015). Eugenol oil nanoemulsion: antifungal activity against *Fusarium oxysporum* f. sp. *vasinfectum* and phytotoxicity on cotton seeds. *Appl. Nanosci.* 5, 255–265. [10.1007/s13204-014-0398-y](https://doi.org/10.1007/s13204-014-0398-y)
- [25] Vasiliki P. and Constantina T. (2016). Study of the Emulsifying Ability of Olive Oil Endogenous Compounds in Co-surfactant Free Olive Oil w/o Nanoemulsions with Food Grade Non-ionic Surfactants. *Food Bioprocess Technology*, 91 1-10. <http://rd.springer.com/article/10.1007/s11947-015-1668-8>
- [26] El-Menshawi, B. S., Fayad W., Mahmoud K., El-Hallouty S. M., Manawaty M. El-, Olofsson M. H. and Linder S. (2010). Screening of natural products for therapeutic activity against solid tumors. *Indian Journal of Experimental Biology*, 48: 258-264. [https://nopr.niscair.res.in/bitstream/123456789/7402/1/IJEB%2048\(3\)%20258-264.pdf](https://nopr.niscair.res.in/bitstream/123456789/7402/1/IJEB%2048(3)%20258-264.pdf)
- [27] Sahin, H., and Özdemir, F. (2004). Effect of some hydrocolloids on the rheological properties of different formulated ketchups. *Food Hydrocolloids*, 18, 1015–1022.
- [28] Schnell, R.J, Ayala- Da Silva, Meerow A.W., Winterstein M., Cervantes C., and Brown J.S. (2005). Determination of color and fruit traits of half-sib families of mango (*Mangifera indica* L.). *Proc. Fla. State Hort. Soc.*, 118, 253-257. <https://www.researchgate.net/publication/281481284>
- [29] Ranganna, S. (2001). *Handbook of analysis and quality control for fruit and vegetable products* (2nd ed.). New Delhi: Tata McGraw-Hill.
- [30] Piggott, J. R. (1984): *Sensory Analysis of Foods*, Elsevier Applied Science Publishers, New York, USA. pp. 157–161. <https://shop.elsevier.com/books/sensory-evaluation-practices/stone/978-0-12-815334-5>
- [31] Duncan, D. B. (1955). Multiple range and multiple F tests. *Biometrics*, 11, 1–41. <https://doi.org/10.2307/3001478>
- [32] Cho, W.Y., Kim D.H., Lee H.J., Yean S.J., and Lee K.H. (2020). Journal of food quality evaluation of effect of extraction solvent on selected properties of olive leaf extract. *J. Food Quality*. Article ID: 3013649 <https://doi.org/10.1155/2020/3013649>
- [33] Sahba B.F. and Dariush K.S. (2020). Effect of the nanoencapsulated sour tea (*Hibiscus sabdariffa* L.) extract with carboxymethylcellulose on quality and shelf life of chicken nugget, *Food Sci Nutr.*, 8:3704–3715. <https://doi.org/10.1002/fsn3.1656>
- [34] Ahmad, M.S., Hayat K., Fohad M.H., Mohammed A.A., Arzoo S., Mohammed M.A., Abdulhakeem A., Al-Zaied B. A. M., Heba K.A., Nawal A., Hiba-Allah N., Mohammed B. (2022). Effects of Different Solvents Extractions on Total Polyphenol Content,

- HPLC Analysis, Antioxidant Capacity, and Antimicrobial Properties of Peppers (Red, Sweet, and Green (*Capsicum annuum* L.)). *Evidence-Based Complementary and Alternative Medicine*, Article ID 7372101, 11 pages <https://doi.org/10.1155/2022/7372101>
- [35] Kanatt, S.R., Chawla S.P. and Sharma, A.(2014). Antioxidant and radio-protective activities of lemon grass and star anise extracts. *Food Biosci.*, 6: 24-30. <https://doi.org/10.1016/j.fbio.2014.03.002>
- [36] Jin, E.Y., Lim, S. S. Kim oh, Park Y.S. , Jang J.K. , Chung M.S. , H Park. , Shim K.-S. , and Choi Y.J. (2011).Optimization of various extraction methods for quercetin from onion skin using response surface methodology. *Food Sci. Biotechnol.* pp. 1727-1733, [10.1007/s10068-011-0238-8](https://doi.org/10.1007/s10068-011-0238-8)
- [37] Shaha, R.K.; Rahman, S. and Asrul, A. (2013). Bioactive compounds in chilli peppers (*Capsicum annuum* L.) at various ripening (green, sweet and red) stages. *Annals of Biological Research*, 4, 8, 27-34. https://www.academia.edu/5460153/Bioactive_compounds_in_chilli_peppers_Capsicum_annuum_L_at_various_ripening_green_yellow_and_red_stages
- [38] Mennat, U. E. A.; Taher M. A.; Sanad M. I. and Tadros L. K. (2019). Chemical Properties, Phenolic Profiles and Antioxidant Activities of Pepper Fruits. *J. Agric. Chem. and Biotechn.*, Mansoura Univ. Vol. 10(7): 133 – 140. <http://dx.doi.org/10.21608/jacb.2019.53475>
- [39] Batra, G., Gortzi O., Lalas S.I. , Galidi A., Alibade A. and Nanos G.D. (2017). Enhanced Antioxidant Activity of *Capsicum annuum* L. and *Moringa oleifera* L. Extracts after Encapsulation in Microemulsions. *Chem. Engineering*, 1, 15; DOI: [10.3390/chemengineering1020015](https://doi.org/10.3390/chemengineering1020015)
- [40] Kurnijasanti, R. and Fadholly A. (2021). Cytotoxic Effect of *Capsicum annuum* L. extract on T47D Cells: In vitro Study. *Research Journal of Pharmacy and Technology*, 14 (6), 3389-3392. <https://doi.org/10.52711/0974-360X.2021.00589>
- [41] Torbica, A., Belovic M., and Dapcevic T., (2014). Nutritional, rheological and sensory evaluation of tomato ketchup with increased content of natural fibers made from fresh tomato pomace. *Food and Bioproducts Process.*, 99, 3, 485-496. <https://daneshyari.com/article/preview/18882.pdf>
- [42] Sharoba A. M.,Senge, B., El-Mansy H. A., EIM. Bahlol H. and Blochwitz R. (2005). Chemical, sensory and rheological properties of some commercial German and Egyptian tomato ketchups. *Eur. Food Res. Technol.* 220:142–151 <http://dx.doi.org/10.1007/s00217-004-0981-7>
- [43] Ayub, M., Zeb, A., Ullah, J. and Kattak, M.A.K. (2005). Effect of various sweeteners on chemical composition of guava slices. *Sarhad Journal of Agriculture* 21(1): 131-134. <http://www.aup.edu.pk/sja.php>
- [44] Anthon, G. E., LeStrange, M. and Barrett, D. M. (2011). Changes in pH, acids, sugars and other quality parameters during extended vine holding of ripe processing tomatoes. *J. Sci. Food Agric.* 91: 1175-1181. DOI: [10.1002/jsfa.4312](https://doi.org/10.1002/jsfa.4312)
- [45] Porretta S., Birzi A., Ghizzoni C., and Vicini E. (1995). Effects of ultra-high hydrostatic pressure treatments on the quality of tomato juice. *Food Chemistry*, 52: 35-41. [https://doi.org/10.1016/0308-8146\(94\)P4178-I](https://doi.org/10.1016/0308-8146(94)P4178-I)
- [46] Kelebek, H.,Selli,S. AND Kola, O. (2017).Quantitative determination of phenolic compounds using LC-DAD-ESI-MS/MS in cv Ayvalik olive oils as affected by harvest time. *Food Measure* 11:226-233. DOI: [10.1007/s11694-016-9389-x](https://doi.org/10.1007/s11694-016-9389-x)
- [47] Quilaqueo, M., Millao S., Luzardo-Ocampo I., Campos-Vega R., Acevedo F., Shene C., Rubilar M. (2019).Inclusion of piperine in β -cyclodextrin complexes improves their bioaccessibility and in vitro antioxidant capacity. *Food Hydrocoll.* 91, 143–152. <https://doi.org/10.1016/j.foodhyd.2019.01.011>