

Population dynamics and fisheries characteristics of the Blue Crab *Callinectes sapidus* (Rathbun, 1896) as an invasive species in Bardawil Lagoon, Egypt

Sahar F. Mehanna^{1*}; Mohammed G. Desouky¹; Alam E. Farouk²

1- Fish population dynamics Lab, National Institute of Oceanography and Fisheries

2- Central Laboratory for Aquaculture Research, Abbassa

*Corresponding Author: Sahar_mehanna@yahoo.com

ARTICLE INFO

Article History:

Received: May 11, 2019

Accepted: June 7, 2019

Online: June 9, 2019

Keywords:

Bardawil Lagoon
Callinectes sapidus
Portunidae
Population Dynamics
Management
Egypt

ABSTRACT

Population parameters of the blue crab, *Callinectes sapidus* were investigated based on the data collected from the commercial catches of Bardawil Lagoon covering 20 months during the fishing seasons 2016-2018. Growth parameters were estimated from the carapace length frequency distribution data of more than 1960 specimens. The von Bertalanffy growth parameters for males, females and sexes combined were $K= 1.53, 1.45$ and 1.42 y^{-1} respectively, $L_{\infty}= 9.71, 10.11$ and 9.96 cm respectively and $t_0= -0.14, -0.15$ and -0.15 year respectively. The values of total mortality coefficient (Z), natural mortality coefficient (M) and fishing mortality coefficient (F) were 5.19, 2.31 and 2.88 y^{-1} for males, 6.21, 2.51 and 3.70 y^{-1} for females and 6.35, 2.57 and 3.78 y^{-1} for sexes combined respectively. Exploitation rate was estimated at 0.55, 0.60 and 0.59 for males, females and sexes combined respectively. The age-based yield per recruit analysis showed that the blue crab stock is being exploited at its optimum limit. The present study suggested that this fishery resource could be expanded with the increase of current fishing effort but such increasing is not acceptable because the commercial species in the lagoon are over exploited. The current management regulations must be revised and improved to sustain and optimize yields.

INTRODUCTION

Invasive species can dramatically alter the ecosystems where they invade (Didham *et al.*, 2005; Lockwood *et al.*, 2007). Invasive species have been shown to reduce the abundance of native species (Brenchley and Carlton, 1983), make changes in marine food webs (Kimbrow *et al.* 2009) and can have negative impacts on directed fisheries (Walton *et al.* 2002). Also, the overall population growth rates of invasive species can increase as the survivorship become high due to the lack of natural predators. The blue crab, *Callinectes sapidus*, is native to the western Atlantic basin, from Canada to Argentina, including Bermuda, Nova Scotia, Maine, northern Massachusetts and the Antilles (GSMFC, 2001; Tavares, 2004). This species has been successfully introduced into both Asia and Europe, accidentally or intentionally. The ship ballast water is the main source responsible for accidental introduction of blue crab larvae. Throughout this range, the blue crab is an important component of estuarine food webs, acting as a dominant, opportunistic benthic predator and scavenger (Hines, 2007).

In turn blue crab is an important prey for fish, including, bass, bream, red drum and croaker. Thus blue crab represents an important link coupling benthic and pelagic food webs (Eggleston *et al.*, 1992; Hines, 2007). For its ecological importance, the blue crab supports important commercial and recreational fisheries throughout much of its range (Miller *et al.*, 2011).

Blue swimmer crabs, *Portunus pelagicus* and *Callinectes sapidus* (Decapoda, Portunidae) are one of the important fishery resources along Egyptian coasts of Mediterranean and Red sea. It supports a valuable commercial fishery in Bardawil lagoon where it contributed about 32% of the total catch in the lagoon (General Authority for Fisheries Resources Development GAFRD, 2006-2017). This constitutes about 26% of gross revenue of the lagoon due to the value of its meat and increasing its market prices year after year. Despite the great importance of the blue crabs to the economy of the Egyptian fisheries, a limited studies were conducted on the biology of these species in the Egyptian waters. All previous studies in the Egyptian waters focused on the blue swimmer crab, *P. pelagicus* (El-Sayed, 1992; Mehanna, 2005; Mehanna and Haggag, 2007; Mehanna and El-Aiatt, 2011). On the other hand, there were no studies dealing with dynamics and management of *C. sapidus* in the Egyptian waters. This work is the first so far to provide biological parameters and population dynamics required for managing the *C. sapidus* stock in Bardawil lagoon.

MATERIALS AND METHODS

A total of 1960 crabs (906 males and 1054 females) were obtained between May 2016 and December 2018 (except the closing months during this period) from the commercial landings of Bardawil lagoon. Sexes were separated externally and their carapace length (CL) and width (CW) to the nearest mm, and their body weight (BW) to the nearest 0.1 g, were recorded for each specimen.

The monthly width and length frequencies were grouped in 0.5 cm classes for LFDA (Length Frequency Distribution Analysis).

The relation between both of CW and CL against BW was computed using the formula $BW = a CW^b$ and $BW = a CL^b$ where a and b were constants.

The relation between the CL and CW was estimated using the following linear equation: $CL = a + b CW$ where a and b are the constants of the relationship.

Growth parameters (L_∞ and K), total mortality rate (Z), natural mortality rate (M), length at first capture (L_c) and yield per recruit analysis were estimated for *Callinectes sapidus* using the following methods:

ELEFAN I program to construct the growth curve and estimate the asymptotic carapace length CL_∞ and the growth parameter K. The seasonal von Bertalanffy growth model was applied to quantify the growth parameters using Hoenig method using the LFDA (Length Frequency Distribution Analysis) for each sex. The seasonal von Bertalanffy growth function can be expressed as:

$$L_t = L_\infty (1 - e^{[-k(t-t_0) + (ck/2\pi) \sin 2\pi(t-ts) - (CK/2\pi) \sin 2\pi(t_0-ts)]})$$

where L_∞ is the asymptotic carapace length that crabs can grow, K is the annual growth coefficient (y^{-1}), t_0 is the age at length zero, ts is the time of the year when the growth rate is highest and C is the amplitude of the seasonality factor, which ranges between 0 and 1 (i.e. for values of C close to 0 no seasonality occurs, for values close to 1 the amplitude is maximal). The ELEFAN routine estimates only two of the three growth parameters (L_∞ and K), thus t_0 was computed by the

empirical function of Pauly (1983) for growth fitting: $\text{Log}(-t_0) = -0.3922 - 0.2752 \text{Log CL}_\infty - 1.038 \text{Log K}$

- Wetherall (1986) plot to estimate L_∞ and Z/K .
- Longevity was calculated from $t_{\max} \approx 3/K$ (Pauly, 1980).
- Jones and Van Zalinge (1981) (Analysis of the cumulative catch curve) and Pauly (1983) (Analysis of the length converted catch curve) methods to estimate total mortality coefficient Z . Also, an estimate of Z was derived from Wetherall (1986) plot.
- Alverson & Carney (1975), Pauly (1980) and Lorenzen (1996) formulae to estimate natural mortality coefficient M .
- Catch curve analysis (Pauly, 1984) to estimate the length at first capture L_c .
- Yield per recruit Y/R analysis was investigated by applying the model of Beverton and Holt (1957) using Gulland (1969) formula as follows:

$$Y/R = Fe^{-M(T_c - T_r)} W_\infty * [(1/Z) - (3S/(Z + K)) + (3S^2 / (Z + 2K)) - S^3 / (Z + 3K)]$$

Where $S = e^{-k(T_c - t_0)}$, T_r = age at the recruitment and W_∞ = asymptotic body weight. Yield per recruit analysis was applied for sexes combined.

RESULTS AND DISCUSSION

Impact of crab's invasion on Bardawil lagoon

In the past, Bardawil lagoon was produced a high valued fish species mainly seabream, flathead grey mullet and thinlip grey mullet with mean annual landings of 2000 ton. Since early 1990's, catch composition in the lagoon were greatly changed specially since the fishing season 1996. Crustaceans have been recorded in the catch in significant quantities during early 1990's and progressively increased to represent up to 60% of the total yield production of Bardawil Lagoon (GAFRD, 2017). This increasing in crustacean catch negatively impacted the lagoon production from economic fish species (Khalil, 2006, Mehanna, 2006, Mehanna *et al.*, 2010 & 2011; Salman, 2013; Mehanna, 2013) (Fig. 1). In addition, several exotic species have been appeared and established themselves in lagoon ecosystem, e.g. *Terpon puta*, *Siganus rivulatus*, *Hemiramphus far*. Their fisheries are abundance and reveal that they find their suitable ecological niche in the lagoon. Also, *Tilapia zillii* appeared in the commercial catch of the lagoon since 1997. At the beginning, its appearance was confined to winter months from October and thereafter, tilapias' catch increased gradually.

The dramatic change in catch composition during this period indicated the presence of several driving factors which alter the ecological condition of the lagoon as well as biological balance. This serious change in catch composition can be attributed to a number of factors: the change in the ecological conditions of the lagoon, uncontrolled fish exporting policy and the overexploitation since late 80's till now. These factors lead to the decreasing of sea bream and sea bass production (Mehanna, 2006; Mehanna and El-Aiatt, 2011; Mehanna *et al.*, 2011; Mehanna, 2013).

Callinectes sapidus is native to the Western Atlantic, It was introduced in Europe (Denmark, Netherlands, and adjacent North Sea, France, Gulf of Genoa); northern Adriatic; Aegean, western Black, and eastern Mediterranean Seas. It has also been introduced to Japan. It is now rather abundant in parts of the northern and eastern Mediterranean Sea and Japan (Tureli, 1999; Tureli and Yesilyurt, 2014; Tureli *et al.*, 2016). Blue crab has become established as a non-native species in the

Mediterranean basin (Holthuis, 1961). Holthuis and Gottlieb (1955) suggested that *C. sapidus* was transported to the Mediterranean in ship's ballast tanks. The blue crab was first recorded in the Egyptian waters of Mediterranean Sea in the 1940's (Banoub, 1963).

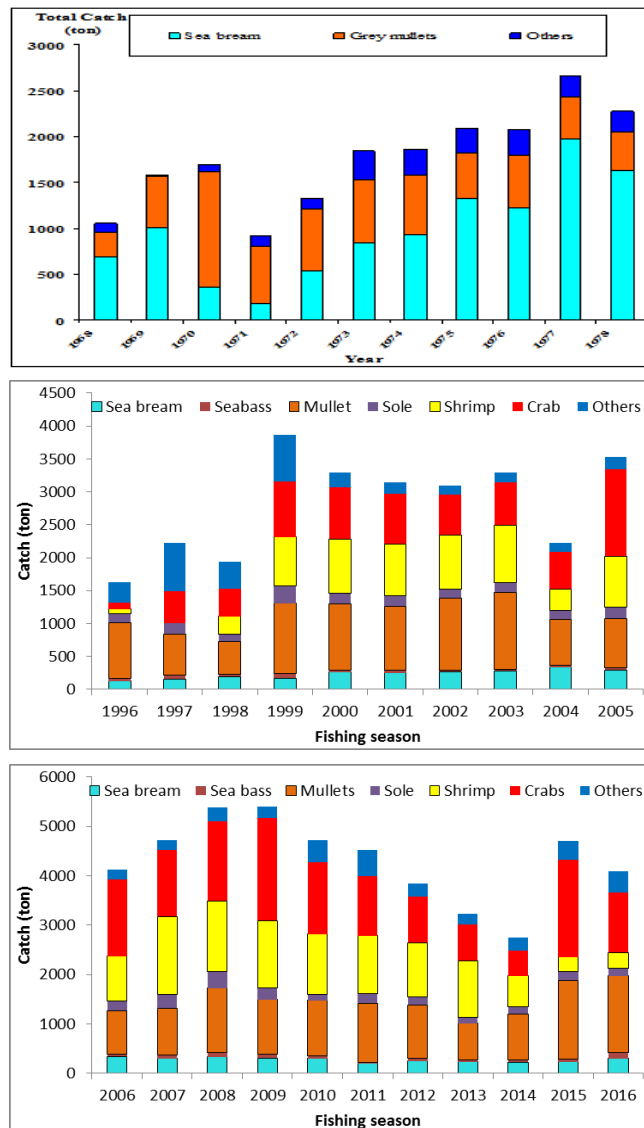


Fig. 1: Catch trends and catch composition changing during different periods of times

Subsequently, it has been reported in coastal waters off Italy (Giordani-soika, 1951, as *Neptunus pelagicus*), Israel (Holthuis and Gottlieb, 1955), Greece (Kinzelbach, 1965), and Turkey (Kocataş and Katağan, 1983). Most recently, it has been reported in the Bay of Biscay, along the northwest coast of Spain (Cabal *et al.*, 2006) and Sacca di Goro lagoon, the northern part of Italy (Manfrin *et al.*, 2015).

C. sapidus along with *Portunus pelagicus* were established as invasive species in Bardawil lagoon with considerable amounts in early 1990's (GAFRD, 1992). Throughout the period from 1987 to 1995, the landings of the crab progressively increased from 19.7 to 491.7 ton. A continuous increase occurred to reach 2071 ton in 2009 and 1973 ton in 2015 (GAFRD, 2017). The crab populations expanded quickly and now support important commercial fisheries in the lagoon (Fig. 2). The

expansion of crab in Bardawil lagoon along with the ecological conditions affected greatly the abundance of the commercial finfish in the lagoon.

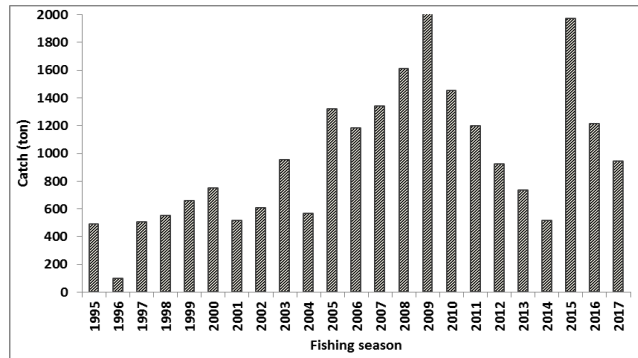


Fig. 2: Crab's catch trends during the last 23 fishing seasons

Carapace length – width relationship

The carapace length (CL) of *C. sapidus* was plotted against the carapace width (CW) to estimate the CL – CW relationship (Fig. 3).

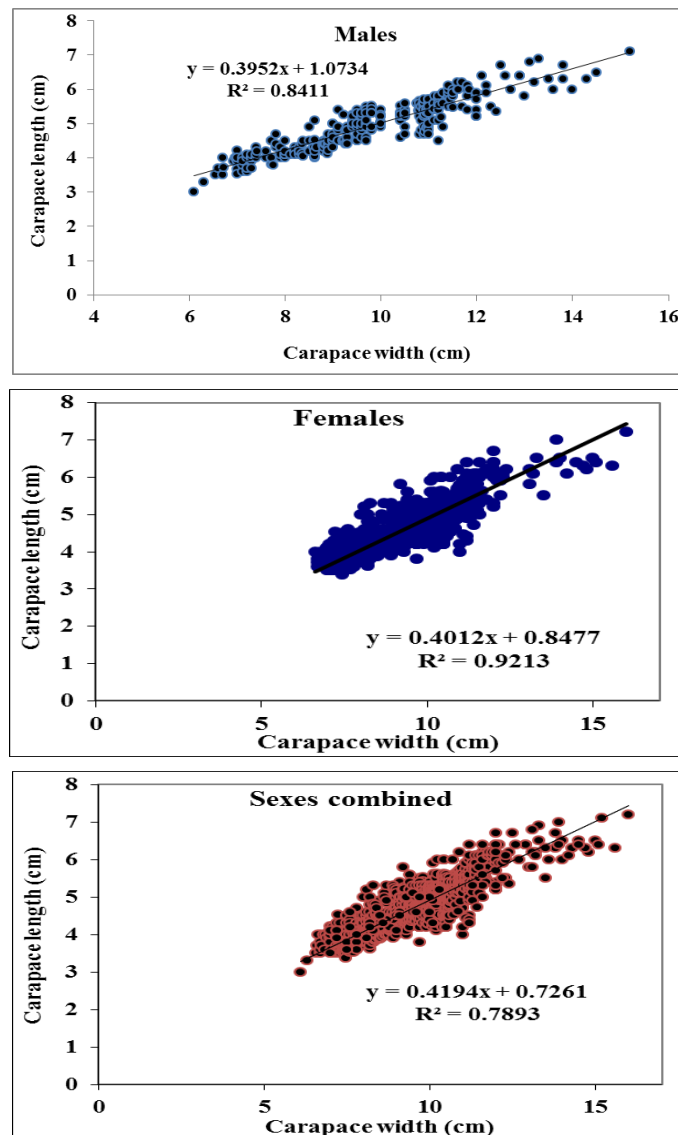


Fig. 3: Carapace length CL-Carapace width CW relationship of *Callinectes sapidus*

The CL varied from 3.0 to 7.1 cm for males and from 3.6 to 7.5 cm for females while the CW varied from 6.3 to 15.2 cm for males and from 6.7 to 16.3 cm for females. The obtained equations were:

Males: $CL = 1.0734 + 0.3952 CW$ ($r^2 = 0.84$)

Females: $CL = 0.8477 + 0.4012 CW$ ($r^2 = 0.92$)

Combined sexes: $CL = 0.7261 + 0.4194 CW$ ($r = 0.79$)

Carapace length and width - body weight relationship

Length-weight relationship (LWR) and its parameters 'a' and 'b' are of great importance in fishery biology and practical stock assessment of aquatic species (Gulland, 1983; Enin, 1994; Stergiou and Moutopoulos, 2001). LWR can also be useful in studies of rate of feeding, metamorphosis, gonad development, maturity and well being of the fish population (Le Cren, 1951; Bolger and Connolly, 1989). The carapace length of *C. sapidus* in Bardawil lagoon was ranged between 3.0 and 7.1 cm (6.3-15.2 cm CW) with weights varying from 15 to 225 g for males, while the carapace length was varied from 3.5 and 7.5 cm (with weights, ranging from 18.0 and 225 g for females (Fig. 4).

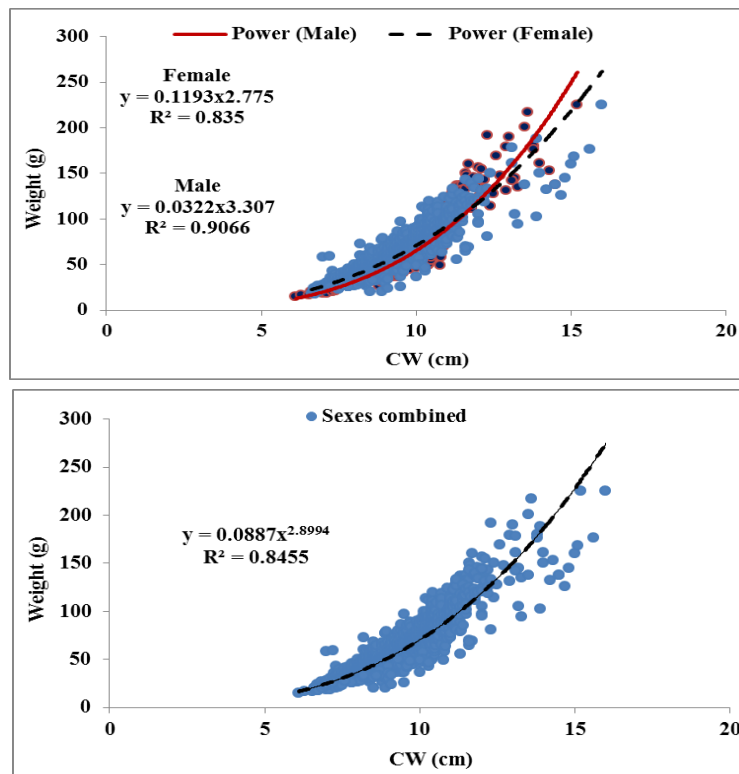


Fig. 4: Carapace width CW- weight relationship of *Callinectes sapidus*

The obtained carapace width - weight equations were:

Males: $W = 0.0322 CW^{3.307}$ ($r^2 = 0.91$)

Females: $W = 0.1193 CW^{2.775}$ ($r^2 = 0.84$)

And carapace width – weight equations (Fig. 5) were:

Males: $W = 0.1962 CL^{3.5844}$ ($r^2 = 0.77$)

Females: $W = 1.0329 CL^{2.6407}$ ($r^2 = 0.72$)

In Bardawil lagoon, blue crab showed positive allometric growth for males and negative allometric growth for females for length and width-weight relationship. For sexes combined, the growth pattern was found to be negative allometric for both

carapace width and length (Fig. 5). The previous available studies gave also the similar results (Stickney, 1972; Atar and Secer, 2003; Gokce *et al.*, 2006; Sumer *et al.*, 2013), others reported the different results (Gokce *et al.*, 2006; Stickney, 1972). The parameters of length-weight relationships may be affected by various factors, such as time of years, temperature, food, environmental conditions, stomach fullness, differences in age, stage of maturity and sex (Bagenal and Tesch, 1978; Pauly, 1984).

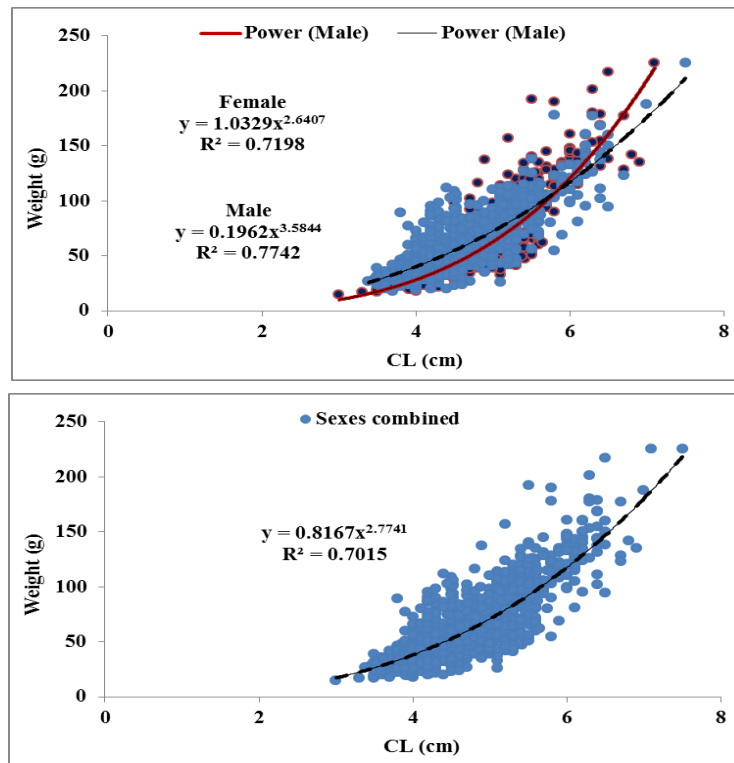


Fig. 5: Carapace length CL - weight relationship of *Callinectes sapidus*

Growth parameters and maximum age

Wetherall (1986) method gave CL_{∞} estimates at 9.71, 10.11 and 9.96 cm for males, females and sexes combined respectively. These values were then applied to a von Bertalanffy plot to estimate the growth parameter K. The respective values of K were 1.53, 1.45 and 1.42 y^{-1} . ELEFAN I program (Pauly, 1987) gave $L_{\infty} = 9.59 \text{ cm}$ and $K = 1.59 \text{ y}^{-1}$ for males, $L_{\infty} = 9.98 \text{ cm}$ and $K = 1.51 \text{ y}^{-1}$ for females and 10.22 and $K = 1.38 \text{ y}^{-1}$ for combined sexes. The estimates of age at length zero t_0 are -0.14, -0.15 and -0.15 year for males, females and sexes combined respectively. Females have higher CL_{∞} and slightly lower K value than males. The values of estimated growth parameters (K and L_{∞}) of *C. sapidus* from Bardawil lagoon indicate the short longevity and fast growth rate of this species. Potential lifespan was estimated to be 1.96, 2.07 and 2.11 years for males, females and sexes combined respectively. The available studies that considered longevities of 3 to 8 years (Fogarty and Lipcius, 2007), Rugolo *et al.* (1997&1998) and Miller and Houde (1999) investigated estimates of longevity ranging from 4 to 8 yrs for Chesapeake Bay. Kahn and Helser (2005) mentioned that the most likely maximum life span in Delaware Bay is 3 yrs. It would appear that the most likely range for blue crab longevity is 2 to 6 yrs depending on location, maximum size and other ecological factors (Fogarty and Lipcius, 2007).

Mortality and exploitation rates

The mean value of the total mortality coefficient (Z) estimated from three different methods was 5.19, 6.21 and 6.35 y^{-1} for males, females and sexes combined respectively. While the geometric mean of natural mortality coefficient (M) for males, females and sexes combined was 2.31, 2.51 and 2.57 y^{-1} respectively, and the respective values of fishing mortality coefficient (F) were 2.88, 3.70 and 3.78 y^{-1} . Accordingly, the exploitation rate (E) was computed as 0.55, 0.60 and 0.59 for males, females and sexes combined respectively.

In the present study, the high values of M were correlated with the high K values of *C. sapidus*. Beverton and Holt (1957&1959) found that the fast growing fish and crustacean species of high K - values have high values of natural mortality. The M/K ratio for males, females and sexes combined of *C. sapidus* from Bardawil lagoon were in the range of 1.5 - 2.5 given by Beverton and Holt (1959). Gulland (1971) reported that the optimum exploitation rate of any exploited stock is about 0.5, so the high values of the present exploitation rate and fishing mortality revealed an excessive fishing effort exerted into the blue crab fishery in the Bardawil lagoon.

Length at first capture (L_c)

The carapace length at first capture (the length at which 50% of the crabs are vulnerable to capture) was estimated as a component of the length converted catch curve analysis. The values of CL_c obtained were 4.33, 4.56 and 4.48 cm for males, females and sexes combined respectively.

Yield per recruit analysis

Based on the obtained results (Fig. 6), a higher catch of crabs could be achieved with the increase of fishing effort along the Bardawil lagoon. Under the present conditions of the lagoon, such an increase in fishing effort may not adversely affect the stock of crabs but will affect the other commercial stocks of finfish in the lagoon. So, it could be said that, presently, the stock of blue crab is underexploited and one possible management policy towards obtaining better catches might be to suggest a specific fishing method for crabs with suitable mesh sizes to conserve the young stages.

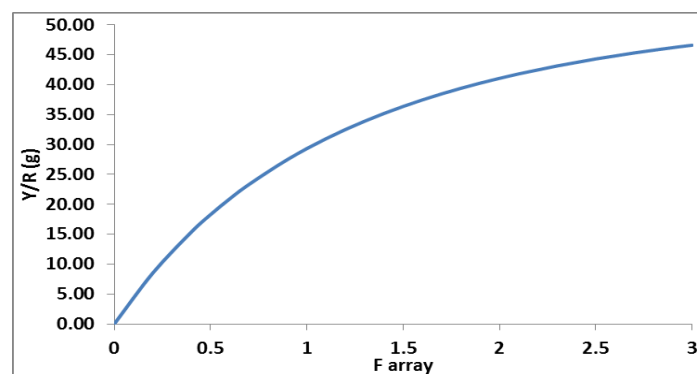


Fig. 6: Yield per recruit analysis of *Callinectes sapidus* from Bardawil lagoon

CONCLUSION

In conclusion, the results of this study show that blue crab fishery in Bardawil lagoon appears to be exploited under its optimum level and there is a scope for a considerable extension of the fishery. But any recommendation to increase the effort in a multi-species fishery should consider all the components of that fishery. Also, before any advice to increase the fishing effort, more precise assessment would be

required and a sampling programme for the commercial landings should be established to provide total catches by size groups. Also, an investigation for the impact of the fishery independent factors like predation and other changes in environmental parameters on the growth and recruitment should be done. Finally, improving the catch statistics recording system to cover all species caught from Bardawil lagoon should be considered. Catch and effort data needs to be evaluated for quantity and quality. Currently, effort information is unreliable and attempts should be made to gather appropriate information to measure effective effort in the lagoon fishery. The unreported and unregulated harvest of blue crab and all species exploited in Bardawil lagoon, should also be controlled. Further research must to be conducted to determine the full dynamics of blue crab in the Bardawil lagoon and its relation with other trophic levels in the lagoon.

REFERENCES

- Alverson, D. L. and Carney, M. J. (1975). A graphic review of the growth and decay of population cohorts. *J. Cons. int. Explor. Mer* 36:133-143.
- Atar, H.H. and Secer, S. (2003). Width length-weight relationships of the blue crab (*Callinectes sapidus*, Rathbun, 1896) population living in Beymelek lagoon lake. *Turk. J. Vet. Anim. Sci.*, 27: 443-447.
- Atar, H.H.; Olmez, M.; Bekcan, S. and Secer, S. (2002). Comparison of three different traps for catching blue crab (*Callinectes sapidus* Rathbun, 1896) in Beymelek lagoon. *Turk J. Vet. Anim. Sci.* 26: 1145-1150.
- Bagenal, T.B. and Tesch, F.W. (1978). Age and growth. In: T. Bagenal (Ed.), *Methods for assessment of fish production in fresh waters*, 3rd edition, IBP Handbook No. 3. Blackwell Scientific Publications, Oxford: 101–136.
- Banouh, M.W. (1963). Survey of the blue-crab *Callinectes sapidus* (Rath.), in Lake Edku in 1960. *Notes and Memoirs No. 69*, Alex. Inst. of Hydrobiology, Egypt: 1–17.
- Beverton, R. J. H. and Holt, S. J. (1957). On the dynamics of exploited fish populations. *U. K. Min. Agr. Fish. Food, Ish. Invest.*, 19: 533p.
- Beverton, R. J. H. and Holt, S. J. (1959). A review of the life spans and mortality rates of fish in nature and their relation to growth and other physiological characteristics. *Ciba Foundation Colloquia on Ageing*, 5: 142-180.
- Bertalanffy, von, L. (1938). A quantitative theory of organic growth (*Inquiries on growth Laws*. 2). *Human Biology*, 10: 181-213.
- Bolger, T. and Connolly. P.L. (1989). The selection of suitable indices for the measurement and analysis of fish condition. *J. Fish Biol.* 34: 171–182
- Brenchley, G.A. and Carlton, J. T. (1983). Competitive displacement of native mud snails by introduced periwinkles in the New England intertidal zone. *Biol. Bull.* 165, 543–558.
- Brylawski, B. J. and Miller, T. J. (2006). Temperature-dependent growth of the blue crab (*Callinectes sapidus*): a molt process approach. *Canadian Journal of Fisheries and Aquatic Sciences*, 63, 1298-1308.
- Cabal, J.; Pis Millan J.A. and Arronte J.C (2006). A new record of *Callinectes sapidus* Rathbun, 1896 (Crustacea:Decapoda:Brachyura) from the Cantabrian sea, Bay of Biscay, Spain. *Aquatic Invasion*, 1, 186-187.
- Cetin, S.; Teksam, I.; Karatas, H. T.; Beyhan and Menderes, C. (2013). Growth and Reproduction Biology of the Blue Crab, *Callinectes sapidus* Rathbun, 1896, in

- the Beymelek Lagoon (Southwestern Coast of Turkey). *Turkish Journal of Fisheries and Aquatic Sciences*, 13, 675-684.
- Didham, R. K.; Tylanakis J. M.; Hutchinson M. A.; Ewers, R. M. and Gemmell, N. J. (2005). Are invasive species the drivers of ecological change. *Trends in Ecology and Evolution*, 20: 470-474.
- Eggleston, D. B.; Lipcius, R. N. and Hines, A. H. (1992). Density Dependent Predation by Blue Crabs Upon Infaunal Clam Species with Contrasting Distribution and Abundance Patterns. *Marine Ecology-Progress Series*, 85: 55-68.
- El-Sayed, A. A. M. (1992). Biological studies on some brachyuran crabs (Crustacea) from Suez Canal . Ph . D. Thesis, Fac. Sci. Al - Azhar Univ.
- Enin, U. I. (1994). Length-weight parameters and condition factor of two West African prawns. *Revue d'hydrobiologie tropicale* 27:121-127.
- Enzenross, V.L.; Enzenross, R. and Bingel, F. (1997). Occurrence of Blue crab, *Callinectes sapidus* (Rathbun 1896) on the Turkish mediterranean and adjacent coast and its size distribution in the bay of Iskenderun. *Turk. J. Zool*, 21:113-122.
- Fogarty, M. J., and Lipcius, R. N. (2007). Population dynamics and fisheries. Pages 711–755 in V. S. Kennedy and L. E. Cronin, editors. *The blue crab Callinectes sapidus*. University of Maryland Sea Grant College, College Park.
- GAFRD (2017). General Authority for Fish Resources Development: the Statistics Yearbook from 1979-2017. Ministry of Agriculture Publications, Cairo, Egypt.
- Giordani Soika, A. (1951). *Il Neptunus pelagicus* (L.) nell'alto Adriatico. *Natura*, 42: 18-20.
- Gokce, G.; Erguden, D.; Sangun, L.; Cekic, M. and Alagoz, S. (2006). Width/length-weight and relationships of the blue crab (*Callinectes sapidus* Rathbun, 1986) population living in Camlik Lagoon Lake (Yumurtalik). *Pakistan J. Biol. Sci.*, 9(8): 1460-1464.
- GSMFC (2001). SEAMAP Environmental and Biological Atlas of the Gulf of Mexico, 1999. Number 82, July 2001.
- Gulland, J.A. (1969). *Manual of Methods for Fish Stock Assessment. Part 1. Fish population analysis.* Fishery Resources and Exploitation Division, FAO, Rome, pp. 154.
- Gulland, J. A. (1971). *The fish resources of the Ocean.* West Byfleet, Surrey, Fishing News (Books), Ltd., for FAO, 255p.
- Gulland, J.A. (1983). *Fish stock assessment a manual of basic methods.* FAO/Wiley Ser. on Food and Agriculture, Vol 1: 233 pp.
- Hines, A. H (2007). Ecology of juvenile and adult blue crabs. Pages 565-654 in V. S. Kennedy and L. E. Cronin, editors. *The Blue Crab Callinectes sapidus*. Maryland Sea Grant College, College Park, MD.
- Holthuis, L.B. (1961). Report on a Collection Crustacea decapoda and Stomatopoda from Turkey and Balkans. *Zool. Verhan*, 47: 1-67.
- Holthuis, L.B. and Gottlieb, E. (1955). The occurrence of the American Blue Crab, *Callinectes sapidus* Rath. In Isreal waters. *Bulletin of the Research Council of Israel*, 5B: 155-156.
- Jones, R. and Van-Zalinge, N.P. (1981). Estimates of mortality rate and population size for shrimp in Kuwait waters. *Kuwait Bulletin on Marine Sciences*, 2: 273-288.

- Kahn, D. M. and Helser, T. E. (2005). Abundance, dynamics and mortality rates of the Delaware Bay stock of blue crabs, *Callinectes sapidus*. *Journal of Shellfish Research*, 24: 269–284.
- Khalil, M. (ed.) (2006). Lake Bardawil and Zaranik Protected Area. Publication of National biodiversity unit, 15.
- Kimbro, D. L.; Grosholz, E. D.; Baukus, A. J.; Nesbitt, N. J.; Travis, N. M.; *et al.* (2009). Invasive species cause largescale loss of native California oyster habitat by disrupting trophic cascades. *Oecologia*, 160: 563-575.
- Kinzelbach, R (1965). Die blaue Schwimmkrabbe (*Callinectes sapidus*), ein Neubürger im Mittelmeer. *Natur und museum* 95, 293-296.
- Kocataş, A. and Katağan, T. (1983). Crustaceans fauna of Turkish coastal lagoons, *Rapp. Comm. Int Mer Médit.* 28(6): 231-233.
- Le Cren, E.D. (1951). The length-weight relationship and seasonal cycle in Gonad weight and condition in the perch (*Perca fluviatilis*). *Journal of Animal Ecology* 20(2):201-219.
- Lockwood, J. L.; Hoopes M. F. and Marchetti M. P. (2007). *Invasion Ecology*. Blackwell Publishing, Oxford, U.K. 304pp.
- Lorenzen, K. (1996). The relationship between body weight and natural mortality in juvenile and adult fish: a comparison of natural ecosystems and aquaculture. *Journal of Fish Biology*, 49:627-647.
- Manfrin, C.; Turolla, E.; Sook Chung, J. and Piero, G. Giulianini (2015). First occurrence of *Callinectes sapidus* (Rathbun, 1896) within the Sacca di Goro (Italy) and surroundings. *The Journal of Biodiversity Data*, 11, 1640.
- Mehanna, S. F. (2005). Stock assessment of the blue swimmer crab *Portunus pelagicus* (Linnaeus, 1766) at the Bitter Lakes, Suez Canal, Egypt. *Egypt. J. Aquat. Biol. & Fish.*, 9 (3): 187-213.
- Mehanna, S. F. (2006). Lake Bardawil fisheries: current status and future sight. *J. Egypt. Ger. Soc. Zool.*, 51(D): 91-105.
- Mehanna, S. F. (2013). Sustainable development of Bardawil lagoon fisheries. First Regional Symposium on Sustainable Small-Scale Fisheries 27 – 30 November 2013, St. Julian's Malta.
- Mehanna, S. F. and Haggag, H. M. (2007). Fisheries management of the blue swimmer crab *Portunus pelagicus* (Linnaeus, 1766) from Port Said at the Mediterranean Coast of Egypt. The International Arab African Fish Resources Conference “Sustainable use and management of aquatic resources”, 28-30 June, 2007.
- Mehanna, S. F.; Ameran, M.; El-Aiatt, A. and Salem, M. (2010). Population dynamics of the Egyptian sole *Solea aegyptiaca* (Soleidae) at Bardawil lagoon, Mediterranean coast of Sinai, Egypt. *Proceedings of the 3rd Global Fisheries and Aquaculture Research Conference, Foreign Agricultural Relations (FAR), Egypt*: 210-219.
- Mehanna, S.F. and El-Aiatt, A. (2011). Fisheries characteristics and population dynamics of the blue swimmer crab *Portunus pelagicus* (Linnaeus, 1766) from Bardawil lagoon. *Proceeding of 4th International Conference on Fisheries and Aquaculture*. Cairo, Egypt.
- Mehanna, S. F.; El-Aiatt, A. A. and Salem, M. (2011). An investigation of the impacts of shrimp bottom trawling on the Bardawil lagoon fisheries, Egypt. *Egypt. J. Aquat. Biol. & Fish.*, 15 (3): 369-378.
- Miller, T. J. and Houde, E. D. (1999). Blue crab target setting. Final report to the Living Resources Sub- committee of the Chesapeake Bay Program. University

- of Maryland Center for Environmental Science (UMCES) Technical Series No. TS-177-99, Chesapeake Bay Program, U.S. EPA (Environmental Protection Agency), 410 Severn Avenue, Annapolis, MD 21403. 167 pp.
- Miller, T. J.; Wilberg, M. J.; Colton, A. R.; Davis, G. R.; Sharov, A. F., *et al.* (2011). Stock assessment of blue crab in Chesapeake Bay. UMCES Technical Report Series TS614.11. University of Maryland Center for Environmental Science. Cambridge, MD.
- Pauly, D. (1980). On the interrelationships between natural mortality, growth parameters and mean environmental temperature in 175 fish stocks. *J. Cons. CIEM*, 39 (3): 175-192.
- Pauly, D. (1983). Length-converted catch curves. A powerful tool for fisheries research in the tropics. Part 1. *ICLARM Fishbyte*, 1(2): 9-13.
- Pauly, D. (1984). Length-converted catch curves. A powerful tool for fisheries research in the tropics. (part II) . *ICLARM Fishbyte*, 2 (1): 17-19.
- Pauly, D. (1987). A review of the ELEFAN system for analysis of length- frequency data in fish and aquatic invertebrates. *ICLARM Conf. Proc.*, 13: 7-34.
- Rugolo, L.; Knotts, K.; Lange A.; Crecco, V.; Terceiro, M., *et al.* (1997). Stock assessment of Chesapeake Bay blue crab (*Callinectes sapidus*). NOAA, Chesapeake Bay Stock Assessment Committee, Annapolis, MD.
- Rugolo, L. J.; Knotts K. S.; Lange A. M. and Crecco, V. A. (1998). Stock assessment of Chesapeake Bay blue crab (*Callinectes sapidus* Rathbun). *Journal of Shellfish Research*, 17: 493–517.
- Salman, S. (2013). Fisheries characteristics and population dynamics of commercial species of family Soleidae at Bardawil Lagoon, North Sinai, Egypt. MSc. Thesis, Suez Canal University.
- Smith, S.G. and Chang, C.L. (2007). Molting and Growth. In *The Blue crab Callinectes sapidus*, eds. V.S. Kennedy and L.U. Cronin, 197-245. Maryland Sea Grant Book College Park, Maryland.
- Stergiou, K. I. and Moutopoulos, D. K. (2001). A review of length-weight relationships of fishes from Greek marine waters. *Naga, the ICLARM quarterly* 24:23-39.
- Stickney, R. (1972). Length-Weight Relationships for Several Fishes and Invertebrates in Georgia Coastal Waters with Condition Factors for Fish Species. Skidaway Institute of Oceanography Savannah, Georgia Technical Report Series No. 72-3.
- Sumer, C.; Teksam, I.; Karatas, H.; Beyhan, T. and Menderes, C. A. (2013). Growth and Reproduction Biology of the Blue Crab, *Callinectes sapidus* Rathbun, 1896, in the Beymelek Lagoon (Southwestern Coast of Turkey). *Turkish Journal of Fisheries and Aquatic Sciences* 13: 675-684.
- Tavares, M. (2004). Discovery of the first known benthic invasive in the Southern Ocean, the North Atlantic spider crab *Hyas araneus* found in the Antarctic Peninsula. *Antarctic Science* 16(2):129–131
- Türel, C. (1999). Aspects of the biology of blue crab (*Callinectes sapidus* Rathbun, 1896) in Iskenderun Bay (Turkey). University of Cukurova, Institute of natural and applied science. Ph.D. Thesis.
- Türel, C. and Yesilyurt, I. N. (2014). “Growth of blue crab, *Callinectes sapidus*, in the Yumurtalik Cove, Turkey: a molt process approach”, *Central European Journal of Biology*, 9: 49-57.

- Türeli, C.; Miller, J.T.; Gündoğdu, S. and Yeşilyurt, I. N. (2016). Growth and Mortality of Blue Crab (*Callinectes sapidus*) in the North-Eastern Mediterranean Sea. *Journal of Fisheries Sciences*, 10 (2): 55-62.
- Walton, W. C.; Mackinnon, C.; Rodriguez, L. F.; Proctor, C. and Ruiz, G. A. (2002). Effect of an invasive crab upon a marine fishery: green crab, *Carcinus maenas*, predation upon a venerid clam, *Katelysia scalarina*, in Tasmania (Australia). *Journal of Experimental Marine Biology and Ecology*, 272: 171-189.
- Wetherall, J. A. (1986). A new method for estimating growth and mortality parameters from length-frequency data. *ICLARM Fishbyte* 4(1): 12-14.