



Prevalence of *Mycoplasma bovis* in Cattle in Nineveh Governorate, Iraq

Khoder Ahmed Al-Azow¹, Qaes Talb Al-Obaidi¹ and Mohammad Ali Hamad²

¹Department of Internal and Preventive Medicine, College of Veterinary Medicine, University of Mosul, Mosul-Iraq. E-mail: kazow90@uomosul.edu.iq

²Department of Microbiology, College of Veterinary Medicine, University of Mosul, Mosul-Iraq. Email: mahmah1073@uomosul.edu.iq



CrossMark

Abstract

THE CURRENT STUDY aimed to determine the prevalence of *Mycoplasma bovis* in cattle in Nineveh Governorate, Iraq, using the culture method, indirect enzyme-linked immunosorbent assay (i-ELISA), and conventional polymerase chain reaction (c-PCR) technique, to evaluate the efficiency of the various laboratory methods used in this study. During the period from March 2022 to February 2023, a total of 352 nasal swabs were collected randomly from cattle and tested using the culture method and conventional polymerase chain reaction (c-PCR) technique (amplifying the *uvrC* gene) for isolation and molecular detection of *M. bovis*, respectively. Moreover, 352 blood samples were collected from the same animals for the detection of antibodies against *M. bovis* using i-ELISA. The results observed that the prevalence of *M. bovis* was 23.57% (83 out of 352) using the culture method, 30.68% (108 out of 352) using the c-PCR technique, and 47.15% (166 out of 352) using i-ELISA. According to the Kappa value (0.807), there was perfect agreement between the c-PCR technique and the culture method, with sensitivity, specificity, and accuracy were 98.79%, 90.33%, and 92.32% for c-PCR technique respectively. While there was moderate agreement between i-ELISA test and the culture method based on Kappa (0.444), with sensitivity, specificity and accuracy were 89.15%, 65.79%, and 71.30% for i-ELISA, respectively. This study was concluded that *M. bovis* is prevalent in Nineveh Governorate and the PCR technique is the more efficient tool than ELISA for detection of *M. bovis* in suspected samples.

Keywords: *Mycoplasma bovis*, Cattle, c-PCR Technique, i-ELISA, Kappa value, Nineveh-Iraq.

Introduction

There are more than 200 species in the *Mycoplasma* genus [1], It can cause numerous infectious diseases in ruminants, particularly cattle, and humans, that result in financial losses and significant higher mortality rates in cattle [2,3]. Among these marvels is the *Mycoplasma bovis* which was initially identified from an outbreak of epidemic mastitis in cows in California state in the USA at 1961, due to their

great biochemical similarities to the *Mycoplasma agalactia* that cause epidemic mastitis in cows, they were originally known as *Mycoplasma bovimastitides* and were subsequently renamed *Mycoplasma agalactia sub. bovis* [4]. *Mycoplasma bovis* is classified in List (B), which infects cows and calves [5]. This bacteria belongs to the *Mycoplasmataceae* family and it is distinguished by its short genome, absence of a cell wall, and high nutritional needs for growing *in vitro* [6]. *Mycoplasma bovis* is disseminated

*Corresponding author: Qaes Talb Alsarhan, E-mail: qaestalb1976@uomosul.edu.iq, Tel.: 009647506885441

(Received 19/03/2024, accepted 19/05 /2024)

DOI: 10.21608/EJVS.2024.277959.1938

©2025 National Information and Documentation Center (NIDOC)

by direct or indirect animal-to-animal contact in herds. Direct transmission between cows can occur during milking or through nose-to-nose contact, but indirect transmission can also happen through sharing drinking and feeding troughs [7]. Timonen *et al.* [8] stated that certain strains of *M. bovis* were isolated from calves that had respiratory illnesses and cows with clinical mastitis, suggesting a potential pathogen transfer via tainted milk between dairy cows and calves. Furthermore, *Mycoplasma bovis* causes a number of infectious diseases in cattle, so-called bovine mycoplasmosis [8,9]. These diseases include chronic bronchopneumonia in calves and cows, polyarthritis in calves, infectious mastitis in cows [10], metritis and abortion in cows, vasculitis in bulls, vasculitis in cows and calves, and keratoconjunctivitis [11]. In addition, middle ear infection and pressure sore abscesses in calves [12]. Endocarditis was also recorded in calves [13].

Mycoplasma bovis is widely spread worldwide, especially in Europe, North America, Australia, and Asia [14]. In Iraq, *M. bovis* was detected in cows and calves infected with pneumonia, polyarthritis, and mastitis in Nineveh Governorate using an indirect enzyme linked immuno-sorbent assay (i-ELISA) [15]. Another study diagnosed *M. bovis* in calves infected with pneumonia using the polymerase chain reaction technique in Mosul city, Iraq [16].

Several laboratory techniques have been developed to detect *M. bovis* in infected cattle, such as the isolation of bacteria (culture method) and identification by electron microscope [17]. Serological tests are also used, such as indirect ELISA [18]. In addition, polymerase chain reaction (PCR) technique [19]. Immunohistochemistry (IHC) [20]. There is a limited information about the prevalence of *M. bovis* in Nineveh Governorate, Iraq using different diagnostic methods. Hence, this study targeted determining the prevalence of *M. bovis* in cattle using the culture method, c-PCR technique, and i-ELISA test and evaluating the efficiency of the laboratory methods used in this study.

Material and Method

Ethical approval

The institutional animal care and use committee in the College of Veterinary Medicine, University of Mosul, was ethically permitted for this study (UM.VET. 2022.085) on February 15,

2022.

Animals and sampling size

This study was conducted on cattle of different sexes, ages, breeds, and origins, that were obtained from various regions in Nineveh Governorate, Iraq. Furthermore, for calculating the number of animals to be sampled was based on the previous study, the seroprevalence of *M. bovis* in Mosul was 76.09% [15]. Therefore, with the expected prevalence 70%, a confidence level of 95% and an absolute error of 5% [21], the following equation was used:

$$n = \frac{z^2 p(1-p)}{d^2}$$

where: n = number of sampled animals, Z = value of the normal distribution for a 5% confidence level, P = expected prevalence, and d = absolute error.

The minimum number of cattle required for this study was at least 322. However 352 samples were collected.

Samples collection that used for detection M. bovis

During the period from March 2022 to February 2023. A 352 nasal swabs were collected from cattle by rotating the swabs over any inflamed areas, visible exudate, or rhinorrhea from the anterior nares of the noses, the samples placed in phosphate buffered saline solution as transporting media, and kept in containers containing a sufficient amount of ice until delivered to a diagnostic laboratory. Then kept at -20°C until performed for the culture method and c-PCR technique [9,19]. In addition, 352 blood samples (5ml) were collected from the same animals via jugular vein puncture, then placed in a tube without anticoagulant for serum separation using a centrifuge at 2500 rpm for 15 min and stored at -20°C to be tested until use for i-ELISA test [22].

Culture method for M. bovis isolation

The nasal swabs (n=352) were placed in *Mycoplasma* broth medium, and transported immediately to a laboratory of the microbiology department, then incubated at 37°C with 5% Co₂ for 7-14 days in a candle jar. When turbidity appeared, an inoculum of each broth was cultured on *Mycoplasma* agar medium: pleuropneumonia like organism (PPLO) medium (Hiehmedialab.com, India) and incubated at 37°C with 5% Co₂

for 7-14 days in a candle jar. The culture was checked daily for the first 7 days and weekly thereafter [22].

Conventional PCR technique for M. bovis detection

The DNA of *M. bovis* was extracted from nasal swabs (n=352), using the commercial HS Prime Taq Premix (2X) DNA extraction kit (GeNetBio, Korea). This was performed according to the manufacturer's instructions. Using the Nanodrop (BioDrop, Germany), the concentration of extracted DNA was estimated at wavelength 260nm, while the purity of extracted DNA was estimated by calculating the ratio of (A260 nm to A280 nm) as described by Morais *et al.* [23]. In addition, the c-PCR technique was used to amplify deoxyribodipyrimidine photolyase (*uvrC*) gene of *M. bovis*. Oligonucleotides specific primers provided by Macrogen Inc., South Korea. Further, the positive bands were at approximately 1626bp, that were used to amplify the *uvrC* gene; the primers *uvrC-F* (5'-TTACGCAAGAGAATGCTTCA-3'), and *uvrC-R* (5'-TAGGAAAGCACCT ATTGAT-3') were designed by Perez-Casal and Prysliak, [24]. A clinically and laboratory-positive cow's DNA was used as a positive control. Additionally, all components of PCR reaction was added except the DNA, used as a negative control. A total volume of 20µl of the PCR reaction was used, comprising 10µl of the master mix (2X), 1µl (10 pmol) of each primer (*uvrC-F* and *uvrC-R*), 3µl of template DNA, and 5µl of nuclease-free water. Furthermore, the thermocycler was set with some modifications in steps according to Perez-Casal and Prysliak, [24]. Initial denaturation at 94°C for 2 min (1 cycle), followed by 35 cycles of denaturation at 94°C for 30 sec, annealing at 55°C for 30 sec, and extension at 72°C for 2 min, then final extension at 72°C for 5 min (1 cycle). The Safe-Red™ dye-stained and 1.5% agarose gel were used to electrophorese the PCR products. Further, to visualize the resultant bands, UV transillumination (BIO-RAD/USA) was utilized.

Indirect ELISA test for M. bovis antibodies detection

The serum samples (n=352) were tested for detection the antibodies against *M. bovis* using ELISA kit BioX *Mycoplasma bovis* (BioX Diagnostics, Belgium). This test was done according to the instructions of the manufacturer.

Statistical analysis

Descriptive statistics on the Excel program 2010 was used to calculate the prevalence, and

IBM SPSS Version 22 (Inc., Chicago, USA) was used to determine the agreement between the different diagnostic methods used in this study based on the Kappa value [25], and calculating the sensitivity, specificity, and accuracy of diagnostic tests was used to evaluate the efficacy of the applied laboratory methods [26].

Results

Results of this study observed that the prevalence of *Mycoplasma bovis* in Nineveh Governorate was 23.57% (83 out of 352), 30.68% (108 out of 352), and 47.15% (166 out of 352) using the culture method, c-PCR technique, and i-ELISA, respectively (Table 1). According to the Kappa value (0.807), there was a perfect agreement between the c-PCR technique and the culture method, with a sensitivity 98.79%, specificity 90.33%, and an accuracy 92.32% for the c-PCR technique. While there was a moderate agreement (Kappa=0.444) between the i-ELISA test and the culture method, with a sensitivity 89.15%, specificity 65.79%, and accuracy 71.30% for i-ELISA test (Tables 2, 3).

Based on the culture method of *Mycoplasma* colonies on pleuropneumonia like organism (PPLO) medium, the growing organism colonies appeared as small, pearlescent, with a matte center and a white to colorless aura halo, with an egg-like (fried egg) appearance (Fig. 1). Using the Nanodrop, the concentration of DNA extracted from the nasal swabs ranged between 70.6 - 277.2 ng/µl, and the purity was ranged between 1.7 - 1.9. Based on the c-PCR technique for amplifying the *uvrC* gene of *M. bovis* using specific primers, the positive bands were at approximately 1626bp. (Fig. 2).

Discussion

In this study, the prevalence of *M. bovis* infection in cattle in Nineveh Governorate was 23.57%, 30.68% and 47.15% using culture method, c-PCR technique and i-ELISA test respectively. These results are lower than other studies addressing the prevalence of *M. bovis* in Iraq, Mhmood and Rhaymah, [14] and Hamad *et al.* [15] who were mentioned that the popularity of *M. bovis* in calves in Mosul city were 76.09% and 86.5% using i-ELISA test and PCR techniques, respectively. There are several studies that have detected the prevalence of *M. bovis* in cattle in various countries, including Turkey, was 23.3% using direct fluorescent antibody testing (DFAT) [27], In Iran, was 88% using the nested PCR

(n-PCR) technique [28], in Jordan, was 27.3% using conventional PCR (c-PCR) technique [29], in Saudi Arabia, was 24% using c-PCR technique [30], in China, was 48.7% using i-ELISA [31], in Egypt, was 67.5% and 8.3%, using culture method and c-PCR technique respectively [32,33], in Sudan, was 7.2% using i-ELISA test [34], in Algeria, was 69.0% and 58.0% using i-ELISA test and Real time PCR technique respectively [35], in United States of America, was 100% and 87.5% using LAMP and real-time PCR (RT-PCR) technique respectively [36], in Brazil, was 91.4%, 1.1% and 62.3% using (IHC), RT-PCR technique, and i-ELISA test respectively [1,37,38], and in Australia, was 42.5% using i-ELISA test [39]. The differs in the prevalence of *M. bovis* among counties may be due to different management approaches, environmental conditions, efficient diagnostic techniques, types of samples that were tested, and the presence or absence of additional factors, such as the host's age, physical characteristics, and immunological status. The variations in *M. bovis* prevalence across different countries was recorded [35,40-45]. Based on the culture method of *M. bovis* on PPLO medium, it appeared as small, pearlescent, with a matte center and a white to colorless aura halo, with an egg-like (fried egg) appearance. This result was similar to those of Niu *et al.* [31]; Ismael *et al.* [46]; Quinn *et al.* [47]; and Gioia *et al.* [48]. Despite some significant drawbacks with the culture method, such as its ability to identify *Mycoplasma* organisms to the genus level only, the process is laborious and time-consuming, *M. bovis* cannot be detected at low concentrations of less than 100 cfu/mL (less than one colony in 10ml of milk), and it cannot distinguish between closely related species [6,46,49,50]. The culture method is considered a gold standard method for detection *M. bovis* in this study, which is used for evolution of new techniques, and it is simple and inexpensive method as well [6,9].

In this study, the *uvrC* gene was selected for the PCR technique to detect *M. bovis* in cattle because it is one of the most commonly targeted in epidemiology, sequencing, and phylogenetic analyses studies, and it is available in various molecular databases [1,24,51,52].

The current study indicated that perfect agreement was showed between the c-PCR technique and culture method, based on the Kappa value, with a sensitivity 98.79%, specificity 90.33%, and accuracy 92.32% for the c-PCR

technique. According to the type of PCR technique, the agreement, sensitivity, and specificity differed for detection of *M. bovis* when compared with the culture method, such as the perfect agreement between the LAMP PCR technique and the culture method (Kappa value = 0.8231), with 97.2% sensitivity and 90.9% specificity, and the substantial agreement between the c-PCR technique and the culture method (Kappa value = 0.7767), with 86.1% sensitivity and 92.9% specificity [53]. Moreover, Parker *et al.* [6] and Scott *et al.* [54] noted that PCR techniques have greater efficiency, specificity, and sensitivity in laboratory detection of *M. bovis* when compared with traditional culture methods. The results also showed moderate agreement between the i-ELISA test and the culture method based on Kappa (0.444), with sensitivity 89.15%, specificity 65.79%, and accuracy 71.30% for the i-ELISA. This finding may be due to the different targets for the two methods (in i-ELISA, the target is the antibodies, while in the culture method, the target is the antigen), cross-reactivity of *M. bovis* with other pathogens, seroconversion, which may take 2-3 weeks before antibodies can be detected, the only detected *M. bovis* in serum, plasma, or milk, and suggestions of poor sensitivity of i-ELISA test [6,36,55]. Furthermore, Szacawa *et al.* [56] stated that i-ELISA test had the lowest level of compatibility with antigen ELISA, PCR techniques, and culture method for diagnosing *M. bovis*, but a high degree of correlation between these methods.

Conclusions

This study was stated that *M. bovis* is circulated among cattle, with a higher prevalence in Nineveh Governorate, Iraq. There were perfect agreements between the c-PCR technique and culture method, while there were moderate agreements between the i-ELISA test and culture methods. This indicates that the c-PCR technique is more efficient than ELISA for diagnosing *M. bovis*. Cattle management practices through responsible cattle ownership and applying a carefully planned program for *M. bovis* control measures were advised.

Acknowledgments

The authors would like to express their deepest and most faithful gratitude to the College of Veterinary Medicine, University of Mosul, for their support.

Conflict of Interest

The authors claim no conflicts of interest.

TABLE 1. Prevalence of *Mycoplasma bovis* in cattle using the culture method, conventional-PCR technique, and indirect-ELISA

Type of test	No. of examined samples	No. of Positive samples (%)
Culture method		83(23.57)
Indirect-ELISA	352	166 (47.15)
Conventional-PCR		108 (30.68)

TABLE 2. The agreement between culture and c-PCR technique based on Kappa value, with the calculating the ratio of the c-PCR technique sensitivity, specificity, and accuracy for *Mycoplasma bovis* diagnosis

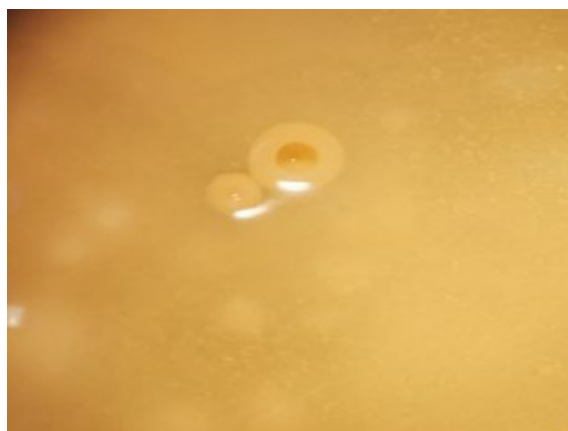
		Culture method		
		Infected	Uninfected	Total No.
c-PCR technique	Infected	82 ^a	26 ^b	108
	Uninfected	1 ^c	243 ^d	244
Total		83	269	352

(a) True positive samples, (b) False positive samples, (c) False negative samples, (d) True negative samples. Kappa value was (0.807). Sensitivity = $a/(a+c) \times 100 = 98.79\%$. Specificity = $d/(b+d) \times 100 = 90.33\%$. Accuracy = $(a+d)/(a+c+b+d) \times 100 = 92.32\%$.

TABLE 3. The agreement between culture and indirect ELISA based on Kappa value, with the calculation of the ratio of the indirect ELISA sensitivity, specificity, and accuracy for *Mycoplasma bovis* diagnosis

		Culture method		
		Infected	Uninfected	Total No.
i-ELISA	Infected	74 ^a	92 ^b	166
	Uninfected	9 ^c	177 ^d	186
Total		83	269	352

(a) True positive samples, (b) False positive samples, (c) False negative samples, (d) True negative samples. Kappa value was (0.444). Sensitivity = $a/(a+c) \times 100 = 89.15\%$. Specificity = $d/(b+d) \times 100 = 65.79\%$. Accuracy = $(a+d)/(a+c+b+d) \times 100 = 71.30\%$.

**Fig. 1. Fried egg appearance of *Mycoplasma* colonies growing on medium (PLO Medium) using a light microscope.**

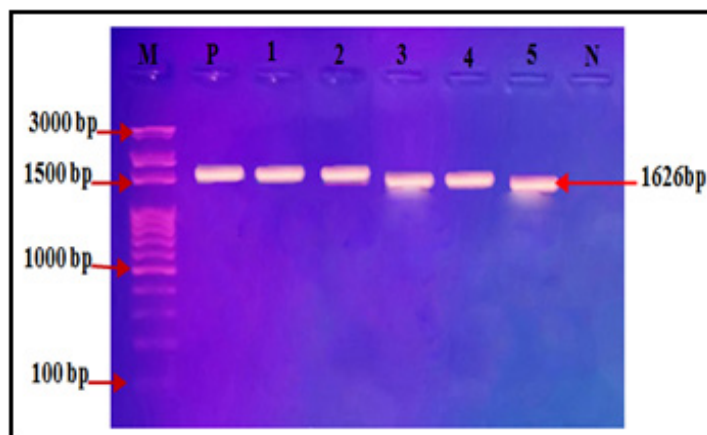


Fig. 2. The conventional PCR image: Lane M) DNA ladder; Lane P) DNA extracted from infected cattle used as positive control for *Mycoplasma bovis*; Lanes (1-5) positive samples of *M. bovis* using specific primers for *uvrC* gene in approximately band size 1626bp.; Lane N) all of PCR component except DNA used as negative control.

References

- Salina, A., Timenetsky, J., Barbosa, M. S., Azevedo, C. M. and Langoni, H. Microbiological and Molecular Detection of *Mycoplasma bovis* in Milk Samples from Bovine Clinical Mastitis. *Pesquisa Veterinária Brasileira*, **40**, 82-87 (2020).
- Peel, D.S. The effect of market forces on bovine respiratory disease. *Veterinary Clinics of North America - Food Animal Practice* **36**, 497-508 (2020).
- Soomro, M.A., Soomro, H., Hassan, M.F., Rajput, Z. I., Khanzada, M. and Meghwar, M. Mycoplasmosis: A zoonotic threat-epidemiology, pathogenesis and economic impact. zoonosis, *Unique Scientific Publishers, Faisalabad, Pakistan*, **4**, 17-28 (2023).
- Xu, Q.Y., Pan, Q. and Xin, J.Q. *Mycoplasma bovis* adhesins and their target proteins. *Frontiers in Immunology*, **13**, 1016641 (2022).
- OIE. Animal diseases. Available at: <https://www.oie.int/en/what-we-do/animal-health-and-welfare/animal-diseases/>, Accessed on, (2021).
- Parker, A.M., Sheehy, P.A., Hazelton, M.S., Bosward, K.L. and House, J.K.A. Review of *Mycoplasma* diagnostics in cattle. *Journal of Veterinary Internal Medicine*, **32**(3), 1241-1252 (2018).
- Biesheuvel, M.M., Ward, C., Penterman, P., van Engelen, E., van Schaik, G., Deardon, R., and Barkema, H.W. Within-herd transmission of *Mycoplasma bovis* infections after initial detection *Egypt. J. Vet. Sci.* **Vol. 56**, No. 4 (2025)
- in dairy cows. *Journal of Dairy Science*, **107**(1), 503-516 (2024).
- Timonen, A.A., Autio, T., Pohjanvirta, T., Häkkinen, L., Katholm, J., Petersen, A., and Kalmus, P. Dynamics of the within-herd prevalence of *Mycoplasma bovis* intramammary infection in endemically infected dairy herds. *Veterinary Microbiology*, **242**, 108608 (2020).
- Dudek, K., Nicholas, R.A., Szacawa, E. and Bednarek, D. *Mycoplasma bovis* infections-occurrence, diagnosis and control. *Journal of Pathogen*, **9**(8), 640-653 (2020).
- Priyantha, M.A.R., Perera, G.I.S., Liyanagunawardana, N. and Ranatunga, A.D. Overview of *Mycoplasma bovis* infection in dairy and beef cattle. *Wayamba Journal of Animal Science*, 1859-1873 (2021).
- Alberti, A. and Cacciotto, C. Eating the enemy: *Mycoplasma* strategies to evade neutrophil extracellular traps (nets) promoting bacterial nucleotides uptake and inflammatory damage. *International Journal of Molecular Sciences*, **23**(23), 15030 (2022).
- Faburay, B. and McVey, D. S. Mollicutes. *Veterinary Microbiology*, 364-376 (2022).
- Kanda, T., Tanaka, S., Suwanruengsri, M., Sukmawinata, E., Uemura, R., Yamaguchi, R. and Sueyoshi, M. Bovine Endocarditis Associated with *Mycoplasma bovis*. *Journal of comparative pathology*, **171**, 53-58 (2019).

14. Klein, U., de Jong, A., Youala, M., El Garch, F., Stevenin, C., Moyaert, H., Rose, M., Catania, S., Gyuranec, M. and Ayling, R. D. New antimicrobial susceptibility data from monitoring of *Mycoplasma bovis* isolated in Europe. *Veterinary Microbiology*, **238**, 108432 (2019).
15. Mahmood, Kh., and Shayal. M. Diagnosis of arthritis in calves resulting from infection with *Mycoplasma bovis* by using indirect ELISA test. *Al-Qadisiyah Journal of Medical Sciences*, **11**(1), 115-122 (2012).
16. Hamad, M.A., AL-Jumaa, Z.M., Al-Aalim A.M., and Jaber Mayahi, M.T. Detection of *Mycoplasma bovis* in pneumonic calves. *Journal of Pure and Applied Microbiology*, **13**(4), 2437-2443 (2019).
17. Gonçalves, A.M.N.C.G. Molecular Diagnosis of *Mycoplasma bovis*. PhD. Thesis, Universidade de Lisboa, Portugal, (2022).
18. Andersson, A. M., Aspán, A., Wisselink, H.J., Smid, B., Ridley, A., Pelkonen, S., Autio, T., Lauritsen, K. T., Kenso, J., Gaurivaud, P. and Tardy, F.A. European inter-laboratory trial to evaluate the performance of three serological methods for diagnosis of *Mycoplasma bovis* infection in cattle using latent class analysis. *BMC Veterinary Research*, **15**, 1-10 (2019).
19. García-Galán, A., Seva, J., Gómez-Martin, Á., Ortega, J., Rodríguez, F., García-Muñoz, Á. and De la Fe, C. Importance and antimicrobial resistance of *Mycoplasma bovis* in clinical respiratory disease in feedlot calves. *Animals*, **11**, 1470-1479 (2021).
20. Cantón, G., Llada, I., Margineda, C., Urtizbiria, F., Fanti, S., Scioli, V., Fiorentino, M. A., Uriarte, E. L., Morrell, E., Sticotti, E. and Tamiozzo, P. *Mycoplasma bovis*-pneumonia and polyarthritis in feedlot calves in Argentina: First local isolation. *Revista Argentina de Microbiología*, **54**(4), 299-304 (2022).
21. Charan, J. and Biswas, T. How to calculate sample size for different study designs in medical research?. *Indian Journal of Psychological Medicine*, **35**(2), 121-126 (2013).
22. Willey, J.M., Sandman, K.M. and Wood D.H. *Prescotts Microbiology*. 12th ed. New York, McGraw Hill LLC, (2023).
23. Morais, A.C.N.D., Pires, D.R., Cunha, N.C.D., Machado, L. D. S., Helayel, M. A., Mendonça, J. F. M. D., de Souza, G. N., Barreto, M. L. and Nascimento, E. R. D. Risk factors associated with intramammary colonization with Mollicutes in dairy cattle from Southeast Brazil. *Ciência Rural*, **51**, e20200694 (2021).
24. Perez-Casal, J. and Prysliak, T. Detection of antibodies against the *Mycoplasma bovis* glyceraldehyde-3-phosphate dehydrogenase protein in beef cattle. *Microbial Pathogenesis*, **43** (5-6), 189-197 (2007).
25. Franco, F. and Di Napoli, A. Reliability assessment of a measure: the Kappa statistic. *Giornale di Tecniche Nefrologiche e Dialitiche*, **28**(4), 289-292 (2016).
26. Baratloo A., Hosseini M., Negida A. and El Ashal G. Part 1: Simple definition and calculation of accuracy, sensitivity, and specificity. *Spring*, **3**(2), 48-49 (2015).
27. Altun, S. and Ozdemir, S. Detection of *Mycoplasma bovis* Infection in cattle mammary tissue by immunofluorescence and QRT-PCR methods. *Kocatepe Veterinary Journal*, **12**, 110–115 (2019).
28. Bagheri, Z., Mohammadzadeh, A., Bahari, A. A., Koochi, P. M. and Sharifi, A. A molecular survey for detection of *Mycoplasma bovis* in bovine bulk milk samples of dairy farms in Hamedan, Iran. *Iranian Veterinary Journal*, **19**(3), 14-22 (2023).
29. Hananeh, W.M., Al Momani, W.M., Ababneh, M.M. and Abutarbush, S.M. *Mycoplasma bovis* Arthritis and Pneumonia in calves in Jordan: An emerging disease. *Veterinary World*, **11**, 1663-1668 (2018).
30. Al-Arfaj, A.A., Hessian, A.M., Al-Doss, A.A., Mohamed, I.A., and Moussa, I. M. (2013). Molecular Identification of the False Negative *Mycoplasma* isolates from bovine mastitis infections. *Journal of Pure and Applied Microbiology*, **7**(3), 2149-2154.
31. Niu, J., Wang, D., Yan, M., Chang, Z., Xu, Y., Sizhu, S., Li, Z., Hu, S. and Bi, D. Isolation, identification and biological characteristics of *Mycoplasma bovis* in yaks. *Microbial Pathogenesis*, **150**, 104691 (2021).
32. Hashem, Y.M., Mousa, W.S., Abdeen, E.E. and Abdelkhalek, H.M. Prevalence and molecular characterization of *Mycoplasma* species, *Pasteurella multocida*, and *Staphylococcus aureus* isolated from calves with respiratory manifestations. *Animals*, **12**, 312-321 (2022).

33. El-Tawab, A., Awad, A., Elhofy, F., Hassan, N.I. and Ramadan, M. Identification and genetic characterization of *Mycoplasma* species affecting respiratory system in Egyptian cattle. *Benha Veterinary Medical Journal*, **40**(1), 21-26 (2021).
34. Onsa, R.A.H., Aldeen, H., Abdelrazig, M. and Kit, E. *Mycoplasma bovis* Seroprevalence in Khartoum. *Asian Journal of Research in Animal and Veterinary Sciences*, **9**, 15-19 (2022).
35. Oucheriah, Y., Heleili, N., Colin, A., Mottet, C., Tardy, F. and Becker, C.A. Prevalence of *Mycoplasma bovis* in Algeria and characterisation of the isolated clones. *Frontiers in Veterinary Science*, **9**, 910799 (2022).
36. Appelt, S., Aly, S.S., Tonooka, K., Glenn, K., Xue, Z., Lehenbauer, T.W. and Marco, M.L. Development and comparison of loop-mediated isothermal amplification and quantitative polymerase chain reaction assays for the detection of *Mycoplasma bovis* in milk. *Journal of Dairy Science*, **102**, 1985-1996(2019).
37. Oliveira, T.E.S., Pelaquim, I. F., Flores, E.F., Massi, R.P., Valdiviezo, M.J.J., Preto-Giordano, L.G., Alfieri, A.A., Saut, J.P.E. and Headley, S.A. *Mycoplasma bovis* and viral agents associated with the development of bovine respiratory disease in adult dairy cows. *Transboundary and Emerging Diseases*, **67**, 82-93(2020).
38. Pires, D.R., Morais, A.C.N., Cunha, N.C., Machado, L.S., Barbosa, L.F.C., Mendonça, J.F.M., Balara, M.F.A., Santos, J.P.C., Souza, G.N. and Barreto, M.L. Proposal of an IELISA for *Mycoplasma bovis* diagnosis in dairy cattle and associated risk factors. *Arquivo Brasileiro de Medicina Veterinaria e Zootecnia*, **73**, 293-301 (2021).
39. Gogoi-Tiwari, J., Tiwari, H.K., Wawegama, N.K., Premachandra, C., Robertson, I.D., Fisher, A.D., Waichigio, F.K., Irons, P. and Aleri, J.W. (2022). Prevalence of *Mycoplasma bovis* infection in calves and dairy cows in western Australia. *Veterinary Sciences*, **9**(7), 351-361.
40. Ammar, A.M., Abd El-Hamid, M.I., Mohamed, Y.H., Mohamed, H.M., Al-khalifah, D.H.M., Hozzein, W.N., Selim, S., El-Neshwy, W.M. and El-Malt, R.M.S. Prevalence and antimicrobial susceptibility of bovine *Mycoplasma* species in Egypt. *Biology*, **11**, 1083(2022).
41. Sorin-Dupont, B., Picault, S., Pardon, B., Ezanno, P. and Assié, S. Modeling the effects of farming practices on bovine respiratory disease in a multi-batch cattle fattening farm. *Preventive Veterinary Medicine*, **219**, 106009 (2023).
42. Penterman, P.M., Holzhauer, M., van Engelen, E., Smits, D. and Velthuis, A.G.J. Dynamics of *Mycoplasma bovis* in Dutch dairy herds during acute clinical outbreaks. *Veterinary Journal*, **283**, 105841(2022).
43. Okella, H., Tonooka, K. and Okello, E.A. Systematic review of the recent techniques commonly used in the diagnosis of *Mycoplasma bovis* in dairy cattle. *Pathogens*, **12**(9), 1178-1195 (2023).
44. Sultana, R. Prevalence and antimicrobial susceptibility of *Mycoplasma bovis* and *Pasteurella multocida* isolated from Alberta feedlot cattle. PhD. Thesis. University of Lethbridge, Canada. (2023).
45. Alvarez, I., Ducatez, M., Guo, Y., Lion, A., Widgren, A., Dubourdeau, M. and Hägglund, S. Proteomic and lipidomic profiling of calves experimentally co-infected with influenza D virus and *Mycoplasma bovis*: Insights into the host-pathogen interactions. *Viruses*, **16**(3), 361 (2024).
46. Ismael, A.B.; Hassan, M.; Mostafa, S.A.; Nassan, M.A.; Mohamed, E.H. Development of a Second-Generation vaccine against mycoplasmosis: Preparation of a fraction candidate from *Mycoplasma bovis* and its evaluation as a vaccine, Department of Animal Medicine, Faculty of Veterinary Medicine, Department of Medical Microbiology. *Global Veterinaria*, **16**: 137-144(2016).
47. Quinn, P.J., Markey, B.K., Leonard, P.C., Fitzpatrick, E.S. and Fanning, S. Concise Review of Veterinary Microbiology. 2nd ed. Oxford city, John Wiley and Sons Ltd (2016).
48. Gioia, G., Addis, M.F., Santisteban, C., Gross, B., Nydam, D.V., Sipka, A.S., Virkler, P.D., Watters, R.D., Wieland, M., Zurakowski, M.J. and Moroni, P. (2021). *Mycoplasma* species isolated from bovine milk collected from US dairy herds between 2016 and 2019. *Journal of Dairy Science*, **104**(4), 4813-4821.
49. Cai, H.Y, Bell-Rogers, P., Parker L. and Prescott J. F. Development of a real-time PCR for detection of *Mycoplasma bovis* in bovine milk and lung samples. *Journal of Veterinary Diagnostic Investigation*, **17**, 537-545 (2005).

-
50. Boonyayatra, S., Fox, L.K., Gay, J., Sawant, A. and Besser, T.E. Discrimination between *Mycoplasma* and *Acholeplasma* species of bovine origin using Digitonin Disc Diffusion Assay, Nisin Disc Diffusion Assay, and Conventional Polymerase Chain Reaction. *Journal of Veterinary Diagnostic Investigation*, **24**, 7-13(2012).
51. Behera, S.; Rana, R.; Gupta, P.K.; Kumar, D.; Sonal; Rekha, V.; Arun, T.R.; Jena, D. Development of Real-Time PCR Assay for the Detection of *Mycoplasma bovis*. *Tropical Animal Health and Production*. **50**, 875-882 (2018).
52. Li, R., Wang, J., Sun, X., Liu, L., Wang, J. and Yuan, W. Direct and Rapid Detection of *Mycoplasma bovis* in bovine milk samples by Recombinase Polymerase Amplification Assays. *Frontiers in cellular and infection microbiology*. **11**, 639083 (2021).
53. Higa, Y., Uemura, R., Yamazaki, W., Goto, S., Goto, Y. and Sueyoshi, M. An improved loop-mediated isothermal amplification assay for the detection of *Mycoplasma bovis*. *Journal of Veterinary Medical Science*, **78**(8), 1343-1346 (2016).
54. Scott, D., Kennedy, M., Chengappa, M.M. and Wikes, R. *Veterinary Microbiology*. 4th ed., Oxford city, John Wiley and Sons, (2022).
55. Gioia, G., Werner, B., Nydam, D.V. and Moroni, P. Validation of a *Mycoplasma* Molecular Diagnostic Test and Distribution of *Mycoplasma* Species in Bovine Milk among New York State Dairy Farms. *Journal of Dairy Science*. **99**, 4668–4677(2016).
56. Szacawa, E., Szymańska-Czerwińska, M., Niemczuk, K., Dudek, K., Bednarek, D. and Ayling, R.D. Comparison of serological, molecular and cultural diagnostic methods for the detection of *Mycoplasma bovis* infections in cattle. *Animal Science Papers & Reports*, **34**(4), 351-359 (2016).

انتشار المفطورات البقيرية في الأبقار في محافظة نينوى، العراق

خضر احمد العزوا^١، قيس طالب العبيدي^{١*} و محمد علي حمد^٢

^١ فرع الطب الباطني والوقائي - كلية الطب البيطري - جامعة الموصل - الموصل - العراق.

^٢ فرع الاحياء المجهرية - كلية الطب البيطري - جامعة الموصل - الموصل - العراق.

المستخلص:

هدفت الدراسة الحالية إلى تحديد مدى انتشار المفطورات البقيرية في الأبقار في محافظة نينوى، العراق، باستخدام طريقة الزرع الجرثومي واختبار الممنز المناعي غير المباشر وتقنية تفاعل البلمرة المتسلسل التقليدي، مع تقييم مدى كفاءة الطرق المخبرية المختلفة المستخدمة في هذه الدراسة. من خلال الفترة الممتدة من آذار ٢٠٢٢ إلى شباط ٢٠٢٣، تم جمع ٣٥٢ مسحة أنفية بشكل عشوائي من الأبقار وفحصها باستخدام طريقة الزرع الجرثومي وتقنية تفاعل البلمرة المتسلسل التقليدية (تضخيم الجين *uvrC*)، لغرض العزل والكشف الجزيئي لتلك الجراثيم على التوالي. فضلاً عن، جمع ٣٥٢ عينة دم من نفس الأبقار للكشف عن الأجسام المضادة لجراثيم المفطورات البقيرية باستخدام اختبار الممنز المناعي غير المباشر. أظهرت النتائج أن معدل انتشار المفطورات البقيرية كانت ٢٣,٥٧٪ (٨٣ من ٣٥٢) باستخدام طريقة الزرع الجرثومي، و ٣٠,٦٨٪ (١٠٨ من ٣٥٢) باستخدام تقنية تفاعل البلمرة المتسلسل التقليدي، و ٤٧,١٥٪ (١٦٦ من ٣٥٢) باستخدام اختبار الممنز المناعي غير المباشر. ووفقاً لقيمة كابا (٠,٨٠٧)، لوحظ أن هناك توافق تام بين تقنية تفاعل البلمرة المتسلسل التقليدي وطريقة الزرع الجرثومي، وكانت الحساسية والنوعية والدقة ٩٨,٧٩٪، ٩٠,٣٣٪، و ٩٢,٣٢٪ لتقنية تفاعل البلمرة المتسلسل التقليدي وطريقة الزرع الجرثومي على التوالي. في حين كان هناك توافق معتدل بين اختبار الممنز المناعي غير المباشر وطريقة الزرع الجرثومي اعتماداً على قيمة كابا (٠,٤٤٤)، وكانت الحساسية والنوعية والدقة ٨٩,١٥٪، ٦٥,٧٩٪، و ٧١,٣٠٪ لاختبار الممنز المناعي غير المباشر على التوالي. استنتج من هذه الدراسة إلى أن المفطورات البقيرية منتشرة في الأبقار في محافظة نينوى، العراق، وأن تقنية تفاعل البلمرة المتسلسل التقليدي أكثر كفاءة من اختبار الممنز المناعي غير المباشر في الكشف عن المفطورات البقيرية.

الكلمات المفتاحية: الميكوبلازما البقيرية، الأبقار، تقنية i-ELISA، c-PCR، قيمة كابا، نينوى-العراق.