

Daily Activity of Pollen Collection According to Different Regions in Kafr El-Sheikh Governorate .

Fathy, H. M.¹; L. A. El-Batran¹; F. S. Serag El-Dien² and Z. A. E. Hassanein²

¹Economic Entomology Dept., Fac. Agric., Mansoura Univ.

²Bee Res. Dept., Agric Res. St., Sakha Kafr El-Sheikh



ABSTRACT

Pollen loads were collected from the traps at 2 hour intervals from March to August during season 2014 from 8 a.m. till 6 p.m in three districts. The results showed that the highest amounts of trapped pollen occurred during the period from 10-12 a.m with an average 88.95, 64.99 and 57.77 g/colony in Biala, Sidi Salem and Kafr El-Sheikh, respectively with representing 28.07%, 27.34% and 29.39% while; the lowest amounts of trapped pollen occurred during period from 4-6 p.m with an average of 27.09, 16.81 and 13.77 g/colony in Bialla, Kafr El-Sheikh and Sidi Salem, respectively. for the whole season; The average amounts of trapped pollen were represented by 8.55 , 8.55 and 5.97% in the three locations , respectively.

INTRODUCTION

Pollen is a crucial material for honey bee and also to bee keeper. It is only source of protein which is necessary for normal bee growth (Day *et al.*, 1990, Liu, 2001). Without pollen, the bee colonies are subjected to deterioration. Pollen is not only the main source of protein but also source of amino acids and provides vitamins, minerals and fats that are required for the growth of all members of the colony (Roulston *et al.*, 2000).

Mature stages of honey bee need various types of achieve their activities efficiently (Raj *et al.*, 1993; Taha *et al.*, 2009 and Abd El-Fattah *et al.*, 2017).

The present study aimed to determine daily activity of pollen collection in every spring and summer months in different regions in Kafr El-Sheikh province (Sidi Salem, Bialla, Kafr El-Sheikh). Usually, the honey bees need several nutrient to complete their growth and activities in a normal way. So, the bee keeper provides the colonies with additional sources of protein and pollen substitutes, especially when the pollen are scarce in the fields and orchards. Hansen and Korie (2000) reported that plant families of high amounts of pollen are: Fabaceae, Asteraceae, Boraginaceae, Convolvulaceae, Euphorbiaceae, Poaceae, Myrtaceae, Sapotaceae and Tilaceae. Pollen is not only the main source of protein but also source of amino acids and provides vitamins, minerals and fats (Roulston *et al.*, 2000) that are essential for the development of brood and young adult bees.

MATERIALS AND METHODS

The present study was carried out in different regions in Kafr El-Sheikh Governorate (Kafr El-Sheikh, Sidi Salem and Bialla) for comparison between daily activity of pollen gathering in different regions during spring and summer season (2014). Fifteen colonies of first hybrid Carniolan honey bee (*Apis mellifera* L.). The experimental colonies were in equal strength and headed with sister recently mated queens. The colonies were divided into three equal groups (five colonies in every region) and these colonies were provided with pollen traps.

Construction of pollen trap

The pollen trap is a wooden box, it has a slope roof and two vertical metal strips each 11 cm, in width and 32.5 cm in length. Each strip has hole of about 3 cm

in diameter, a slide wooden box (collection tray) 7 cm in width, 30 cm, in length fixed under the fine wire screen to collect pellets which fall from the workers legs when try to pass from the rap to the hive (Fig. 1).

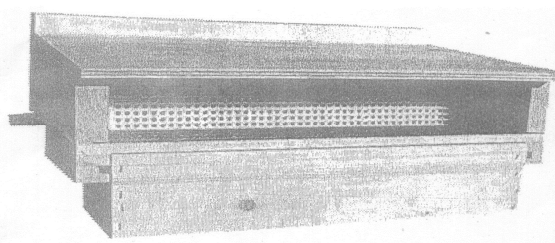


Fig. 1. Construction of pollen trap

Efficiency of pollen trap:

The efficiency of pollen trap in collecting pollen loads was determined by removing all stored pollen combs for one colony and fix pollen trap on hive entrance. After three days, also pollen loads which fall the workers legs in trap box (trapped pellets) were weighed and the efficiency of trap was 18%, calculated as follows:

$$\text{Pollen trap efficiency \%} = \frac{\text{Weight of trapped pollen (g)}}{\text{Weight of stored and trapped pollen (g)}} \times 100$$

Number of stored pollen/in² was estimated and the weight of these pollen was calculated (Fathy, 2006)

Estimation of daily activity of collecting pollen:

Pollen loads were collected from the traps at 2 hour intervals during 2014.

RESULTS AND DISCUSSION

Pollen loads were collected from the traps at two hours intervals on mid of every month from March to August 2014 starting from 8 a.m till 6 p.m. From the data presented in Table (1) and Figs. (2 & 3), it is evident that highest amounts of trapped pollen from 8-10 a.m with an average 25.68, 19.74 and 36.78 g/colony in Kafr El-Sheikh, Sidi Salem and Bialla, respectively. The highest amounts of trapped pollen was in summer 41.48%, 41.17% in Kafr El-Sheikh and Bialla and in spring in Sidi Salem 28.26%. The lowest amounts of trapped pollen occurred during period from 4-6 p.m. with an average 27.09, 16.81 and 13.77 g/colony in Bialla, Kafr El-Sheikh and Sidi Salem, respectively with representing 8.55% and 8.55% and 5.79% for the whole year.

Table 1. Average pollen grains collection (g/colony) by trapped colony every two hours on mid-year months at Kafr El-Sheikh, Sidi Salem and Biala regions during 2014 season.

Months	8-10 a.m	10-12 a.m	12-2 p.m	2-4 p.m	4-6 p.m	Total
Kafr El-Sheikh						
Mar. 2014	1.63	2.52	3.03	2.53	1.09	10.80
Apr.	1.76	3.26	2.77	1.63	0.43	9.85
May	3.18	7.87	6.79	4.28	2.14	24.26
Spring %	6.57	13.65	12.59	8.44	3.66	44.91
Jun.	7.00	5.77	3.68	2.14	1.12	19.71
Jul.	6.58	6.77	5.02	3.60	1.24	23.21
Aug.	12.10	9.12	6.99	6.27	4.13	38.61
Summer %	25.68	21.66	15.69	12.01	6.49	81.53
Sidi Salem						
Mar. 2014	4.06	5.19	4.40	3.05	1.01	17.71
Apr.	4.30	5.20	5.77	4.33	1.00	20.60
May	5.31	6.07	9.85	5.23	2.40	28.86
Spring %	13.67	16.46	20.02	12.61	4.41	67.17
Jun.	4.26	4.15	3.10	1.99	0.06	13.56
Jul.	6.19	4.88	3.60	2.22	1.00	17.89
Aug.	9.29	5.28	4.48	3.10	1.08	23.23
Summer %	19.74	14.31	11.18	7.31	2.14	54.68
Biala						
Mar. 2014	4.03	5.02	5.43	2.73	2.10	19.31
Apr.	4.16	5.76	5.17	3.83	2.53	21.45
May	5.58	10.37	9.19	6.48	3.24	34.86
Spring %	13.77	21.15	19.79	13.04	7.87	75.62
Jun.	10.70	9.67	7.28	5.54	3.32	36.51
Jul.	10.28	10.67	8.62	7.00	3.44	40.01
Aug.	15.80	13.02	10.59	9.67	4.88	53.96
Summer %	36.78	33.36	26.44	22.21	11.64	130.48

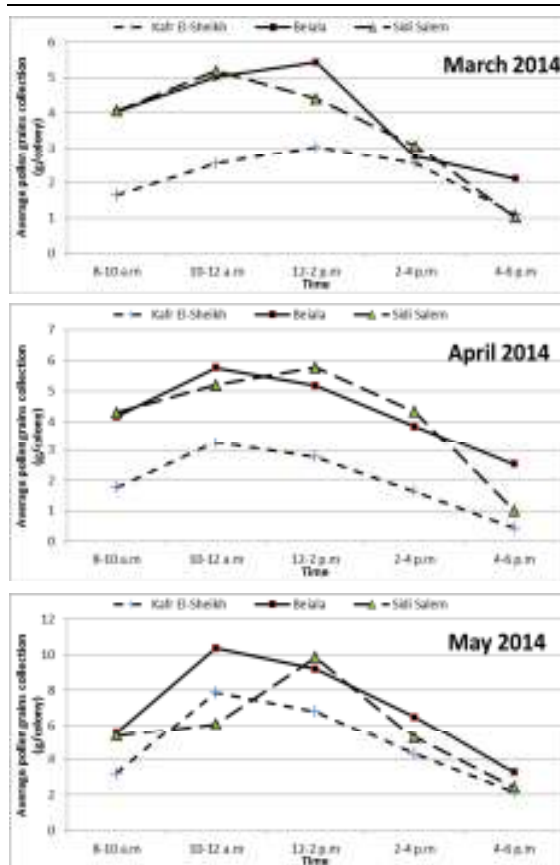


Fig. 2. Daily fluctuation of collection pollen (g/colony) by trapped colonies every two hours on mid of Spring months, 2014 in different regions.

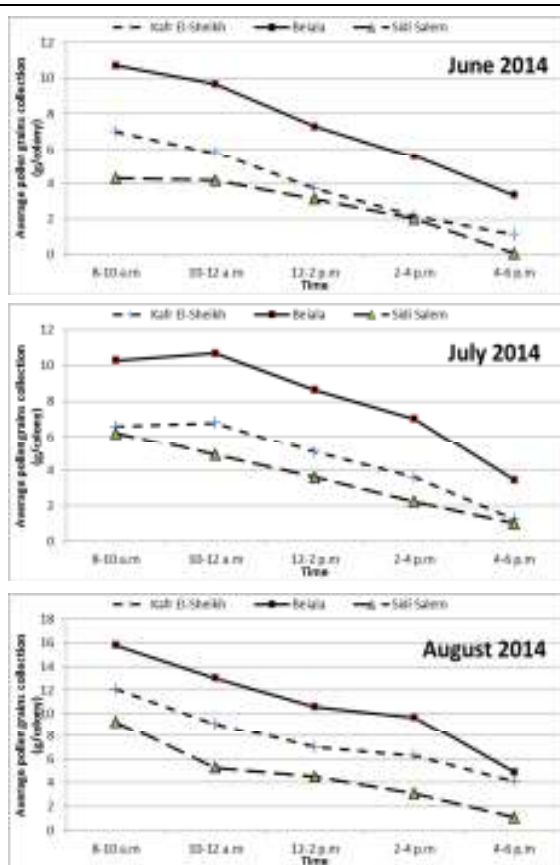


Fig. 3. Daily fluctuation of collection pollen (g/colony) by trapped colonies every two hours on mid of summer months, 2014 in different regions.

The highest activity period during day in spring occurred between 10-12 a.m. in Biala and Kafr El-Sheikh, while between 12-2 p.m. in Sidi Salem and in summer occurred between 8-10 a.m. in the region. The results were in agreement with (Awad, 1998).

Tables (1) and Figs. (2&3) showed that bees collected the highest amount of pollen grains during August in Beilla and Kafr El-Sheikh with an average 53.96 and 38.61 g/colony, respectively representing 41.17% and 41.98 May was the second highest month of amount of pollen collection with an average 98.86 g/colony/day, representing 28.26% in Sidi Salem and July with an average 40.01 g/colony/day, representing 30.66% in Biala. the results were agreement with (Kubota 1984) and (Wille *et al.*, 1985).

REFERENCES

- Abd El-Fattah, Sarah and H. El-Dereny (2017). Activity of honey bee foragers in nectar and pollen collection from plum (*Prunus sp.*) cultivars flowers. Arab. J. Pl. Prot. 35, special issue, November, E.90.
- Awad. (1998). Effect of colony population size on the efficiency of nectar collection and honey production in honey bee (*Apis mellifera*) colonies. M.Sc. Thesis, Entomology Dept., Cornell Univ., Ithaca, NY, USA 176 pp.
- Bach, R. (1982). Relative attractiveness of different pollens to honey bees when foraging in a flight room and when fed in the hive. J. Apis. Res., 21(2): 104-106.
- Day, S.; R. Beyer; A. Mercer and S. Ogdon (1990). The nutrient composition of honey bee collected pollen in Otago. J. of Apic Res., 29(3): 138-148.
- El-Santil, F.S. (2002). Seasonal pollen gathering activity of honey bee colonies Gharbia governorate with special reference to the effect of artificial feeding. J. of Product. & Dev., 7(1): 37-44.
- Hansen, C. and S. Korie (2000). Determining in the time delay of honeybee (*Apis mellifera*) foraging response to hourly pollen release in typical pollen flower (*Cistus salvifolius*). International Institute of Tropical Agriculture (IITA), Cotonou Republic of Benin, West Africa.
- Kubota, A. (1984). Comparison of pollen plants foraged by Japanese and European honey bees. Honey bee Sci. 5(4): 157-158.
- Liu, Q.; N.X. Zhao and H. Gang (2009). Pollen morphology of the Chloridoideae (Geaminiaceae). Grana, 43(4): 238-28.
- Raj *et al.* (1993). Influence of fermented cane juice syrup on activities of the honey bee (*Apis cerana*). Proc. Int. Symp. on Pollination in Tropics, Aug. 8-13, Bangalore, India, 246-247.
- Radford, B.J. and J.W. Rhodes (1978). Effects of honey bee activity on the cross pollination of male sterile sunflower. Queensland. J. of Agric. Anim. Sci., 35: 153-157.
- Roulston, T.H.; J.H. Cane and S.L. Buchmann (2000). What governs protein content of pollen: Pollinator preferences. Pollen Pistil Interaction, or Phylogeny? Ecological Monographs, 70(4): 617-643.
- Taha, E.A. and Y.A. Bayoumi (2009). The value of honeybee (*Apis mellifera*) as pollinator of summer seed watermelon (*Citrullus lanatus* var. *colothynthoides* L. Cucurbitaceae) in Egypt. Acta Biol. Szeg 53(1): 33-37.
- Wille, H.; A. Imoder; G. Buhalmann; V. Kilchenmann and M. Will (1985a). Relationship between pollen harvest, brood production and median life expectancy of workers in honey bee colonies. Mitteilugender Schweizerrischen Entomologischen Gesellschaft, 58(1/2): 205-214. (C.F. apic. Abst., 144/1987).
- Yang, X.; W. Heng; and L. Chunl-in (2003). Pollen morphology of the genus *Colocasia* (Araceae) from China. Acta. Botanica, Yunnanica, 25(5): 603-608.

النشاط اليومي لجمع حبوب اللقاح في المناطق المختلفة في محافظة كفر الشيخ.
حسن محمد فتحي^١، ليلي عبد الله البطران^١، فريد شوقي سراج الدين^٢ وزينب عوض السيد حسنين^٢.
^١ قسم الحشرات الاقتصادية - كلية الزراعة - جامعة المنصورة.
^٢ قسم بحوث النحل - معهد بحوث وقاية النباتات - سخا - كفر الشيخ.

تم جمع حبوب اللقاح من المصيدة كل ساعتين ابتداء من مارس حتى أغسطس (٢٠١٤) من الساعة ٨ صباحاً حتى الساعة ٦ مساءً في ثلاثة مراكز مختلفة في محافظة كفر الشيخ هي: (سيدي سالم - بيلا - كفر الشيخ). أوضحت النتائج أن أعلى كمية من حبوب اللقاح المجموعة كانت أثناء الساعة ١٠ - ١٢ صباحاً بمتوسط ٨٨,٩٥ و ٦٤,٩٩ و ٥٧,٧٧ جم / طائفة في بيلا، سيدي سالم، وكفر الشيخ على التوالي بنسبة مئوية (٢٨,٠٧% و ٢٧,٣٤% و ٢٩,٣٩%). وأقل كمية تم الحصول عليها كانت أثناء الساعة ٤ - ٦ مساءً بمتوسط ٢٧,٠٩% و ١٦,٨١% و ١٣,٧٧% جم / طائفة في بيلا، كفر الشيخ، وسيدي سالم على التوالي بنسبة مئوية (٨,٥٥% و ٨,٩٧% و ٥,٩٧% على مدار العام).