



Bacteriological and Molecular Identification of some *Campylobacter* Species in Broilers and their Macrolide Resistance Profile

Ashraf A. Abd El Tawab¹, Ahmed A. Ammar², Heba A. Ahmed³, Fatma I. El Hofy¹, Ahmed A. Hefny^{4*}

¹Department of Bacteriology, Immunology and Mycology, Faculty of Veterinary Medicine, Benha University, PO 13736 Moshtoher, Benha, Egypt; ²Microbiology Dep., Fac. Vet. Med. Zagazig University, ³Zoonoses Dep., Fac. Vet. Med. Zagazig University, ⁴Veterinary Hospital, Fac. Vet. Med. Zagazig University.

* Corresponding author: Email: (ahmed_vet8_2007@yahoo.com), Tel.: +(20)1223600435

ABSTRACT

Genus campylobacter including several species is of great importance that is considered among the major causative agents of acute diarrheal diseases in humans worldwide. The current study was carried out to determine the occurrence of thermotolerant campylobacters in broilers and to identify the macrolides resistance profiles of *C. jejuni* and *C. coli* isolates. A total of 568 samples (364 cloacal swabs and 51 of each breast meat, thigh meat, caecal part and neck skin) were collected from broiler chickens at slaughter age from local pluck shop outlets in Zagazig city, Sharkia Governorate, Egypt. The isolation rate of *Campylobacter* species from neck skin, breast meat, cloacal swabs, thigh meat and caecal parts samples was 25.5%, 27.5%, 29.3%, 31.4% and 41.2%, respectively. *C. jejuni* was isolated from cloacal swabs, skin, thigh meat, breast meat and caecal parts samples with the isolation rate of 55.3%, 53.8%, 43.7%, 50% and 80.9%, respectively. Forty-two campylobacter isolates (28 and 14 biochemically suspected *C. jejuni* and *C. coli* isolates, respectively) were confirmed molecularly depending on 23S rRNA gene. Furthermore, real time PCR targeting *hipO* gene specific for *C. jejuni* and *glyA* specific for *C. coli* were used. The molecularly confirmed isolates were evaluated they macrolides resistance pattern which revealed that all isolates were resistant to macrolides. Further studies on the mechanisms of macrolides resistance in campylobacters are essential.

Keywords: *C. jejuni*, *C. coli*, broiler, rtPCR, macrolide, Egypt

(BVMJ, 34 (1), 2018)

1. INTRODUCTION

Campylobacter is considered an emerging foodborne disease (EFSA and ECDC, 2015), which was recognized as a major cause of human illnesses ranging from gastroenteritis to severe illness;

Guillain-Barre Syndrome (Moore et al., 2005).

Poultry is a natural host of *Campylobacter* spp. and the broiler chicken gut especially the caeca is often colonized by *C. jejuni* in particular (EFSA, 2008). *Campylobacter* spp. are Gram-negative,

curved rods within the family campylobacteriaceae (Zilbauer *et al.*, 2008), which require specific growth conditions for an optimal growth (Bronnec *et al.*, 2016).

Amongst campylobacters, thermophilic *Campylobacter* species are implicated in food borne infections (Iovine *et al.*, 2008). *C. jejuni* and *C. coli* are recognized as the major cause of acute gastroenteritis in human throughout the world. *C. jejuni* is most frequently reported as a cause of human campylobacteriosis (80-90%) compared to *C. coli* (5-10%) (EFSA, 2008).

Hippurate hydrolysis is the only phenotypic test differentiating *C. jejuni* from other species of campylobacters, especially the thermophilic species. The two biotypes of *C. jejuni* (*C. jejuni* subsp. *jejuni* and subsp. *doylei*) are capable of hydrolyzing sodium hippurate to benzoic acid and glycine (ISO, 2006). However, recently, hippurate negative *C. jejuni* strains have been reported in several studies (Waino *et al.*, 2003). For instance, Takkinen *et al.* (2002), documented 2.5% false positive hippurate hydrolysis results and 39% false negative results.

Gastroenteritis caused by campylobacter infection is usually self-limiting and require no antimicrobial treatment except in severe and immunocompromised patients (Belanger and Shryock, 2007). Fluoroquinolones (FQ) and macrolides are the most commonly used antibiotics in the treatment of campylobacter infections (Da Silva *et al.*, 2016). However, the rapid significant increase in the prevalence of FQ and macrolides resistant strains isolated from broiler sources

(Neimann *et al.*, 2003), is recognized as the major health problem worldwide (Griggs *et al.*, 2005). The increased resistance has been reported due to the un-controlled use of antibiotics especially in poultry industry (Chang *et al.*, 2015).

The aim of the current work was to investigate the prevalence of *Campylobacter* species particularly *C. jejuni* in broiler chicken samples by using conventional and molecular tools. Also, identifying the macrolides resistance profile of *C. jejuni* and *C. coli* isolates using both minimum inhibitory concentration and disc diffusion methods.

2. MATERIAL AND METHODS

2.1. Samples:

A total of 568 samples were collected from broiler chickens at slaughter age (6 weeks) from local pluck shop outlets in Zagazig city, Sharkia Governorate, Egypt. The samples comprised of 364 cloacal swabs and 51 of each breast meat, thigh meat, caecal part and neck skin. The study was carried out during the period from September 2015 to July 2017. The collected samples were aseptically transported as soon as possible in an ice box to the laboratory for bacteriological examination.

2.2. Samples preparation:

2.2.1. Poultry cloacal swabs:

Sterile swabs were inserted into the cloaca, and then directly immersed into tubes containing sterile preston enrichment broth medium (Ellerbroek *et al.*, 2010).

2.2.2. Poultry skin, meat and caecal samples:

Twenty five grams of each breast meat, thigh meat, incised skin and caecal

Bacteriological and Molecular Identification of some *Campylobacter* Species in Broilers and their Macrolide Resistance Profile

samples were aseptically transferred to a sterile blender containing 225 ml of preston enrichment broth for homogenization then enriched (Sallam, 2001).

2.3. Bacteriological examination:

2.3.1. Isolation of *Campylobacter* species:

For isolation of *Campylobacter* species, the collected samples in preston enrichment broth were incubated at 42°C for 24-48 hours with less than 1 cm of headspace left in the culture vessel with tightly capped lids (Oxoid, 2006). After enrichment, 0.1 ml of the broth was streaked onto modified campylobacter selective agar; mCCDA containing CCDA selective supplement. The plates were then incubated at 42°C in darkness for 48 hours under microaerophilic conditions (5% O₂, 10% CO₂ and 85% N₂) using CampyGen sachets (Vandepitte and Verhaegen, 2003).

2.3.2. Preliminary confirmation of thermophilic *Campylobacter* species

Thermophilic *Campylobacter* species were preliminary identified by their colonial morphology on mCCDA media. Suspected colonies were purified on 5-7% lysed horse blood agar plates and subjected to Gram staining, testing of motility, growth at 25°C and 41.5°C and oxidase test (ISO, 2006).

2.3.3. Biochemical identification of *Campylobacters*:

The preliminary identified *Campylobacter* species were further subjected to catalase test, oxidase test, susceptibility to nalidixic acid and cephalothin and rapid hippurate hydrolysis test (Nachamkin, 1999).

2.4. Molecular identification of isolates:

2.4.1. DNA extraction:

DNA extraction from the

biochemically identified isolates was performed according to the manufacturer guidelines using Bacterial DNA Extraction Kit (Spin-column) (BioTeke Corporation, China).

2.4.2. Confirmation of *Campylobacter* spp. by PCR:

A conventional PCR targeting 650 bp of 23S rRNA specific for *Campylobacter* spp. was used for the confirmation of 42 biochemically identified campylobacter isolates (Wang et al., 2002). The sequences of primers are Camp-F 5'-TATACCGGTAAGGAGTGCTGGAG-3' and Camp-R 5'-ATCAATTAACC TTCGAGCACCG-3'.

2.4.3. Confirmation of *C. jejuni* and *C. coli* isolates by real time PCR (rtPCR):

A real time probe based PCR (rtPCR) reaction was used for the confirmation of 28 biochemically identified *C. jejuni* isolates using species-specific primer and TaqMan probe sets targeting hipO gene specific for *C. jejuni* (LaGier et al., 2004). The sequences of primers and probe are Cj-F 5'-TGCTAGTGAGGTTGCAAAAGAATT-3', Cj-R 5'-TCATTCGCAAAAAA TCCAAA-3' and Cj-FAM 5'-ACGATGATTAAATTCACAATTTTTTTC GCC AAA-3'. Also, 14 suspected *C. coli* isolates were confirmed by the amplification of glyA gene (LaGier et al., 2004). The sequences of primers and probe are Cc-F 5'-CATATTGTAAAACCAAAGCTTATCGG-3', Cc-R 5'-AGTCCAGCAAT GTGTGCAATG-3' and Cc-VIC 5'-TAAGCTCCAACCTTCATCCGCAATCTCT C TAAATTT-3'. Non-template DNA and positive controls of *C. jejuni*, *C. coli*, *E. coli*, *S. Typhimurium*, *Staph. aureus* and two

biochemically identified *Campylobacter* isolates other than *C. jejuni* and *C. coli* were also run to determine the specificity of the reaction.

2.5. Antimicrobial susceptibility testing (determination of phenotypic resistance):

2.5.1 Disk diffusion method (Qualitative susceptibility testing):

A total of 28 *C. jejuni* and 14 *C. coli* isolates were examined for their susceptibility to macrolides by the disk diffusion method on Mueller-Hinton agar supplemented with 5% of lysed horse blood 50% following the NCCLS recommendations (CLSI, 2012). *Campylobacter jejuni* NCTC 11322 / ATCC®29428 was used as a quality control. The used macrolides antibiotics (Oxoid) were erythromycin (E₁₅ µg), clarithromycin (CLR₁₅ µg), azithromycin (AZM₁₅ µg) and Spiramycin (S₁₀₀ µg). Tylosin (TLS₅) was not commercially available in the form of discs and prepared from powder (Sigma Aldrich) using Whatman filter paper no. 1.

2.5.2 Broth microdilution method (quantitative susceptibility testing):

Two-fold broth microdilution method was used to determine the minimum inhibitory concentrations (MIC) of 28 *C. jejuni* and 14 *C. coli* strains against macrolides agents using Mueller Hinton broth according to Clinical and Laboratory Standards Institute guidelines (CLSI, 2012).

2.5.3 Interpretation of antimicrobial susceptibility tests

The interpretation criteria for the susceptibility testing of *Campylobacter* spp. for erythromycin, clarithromycin, tylosin and azithromycin were according to EUCAST (2017). The interpretation criteria for tylosin were used the breakpoints given for

erythromycin. The criteria for spiramycin and tylosin were following the recommendations of Ca-SFM (2013).

3. RESULTS

3.1. Preliminary confirmation of thermophilic *Campylobacter* species

Campylobacter species were preliminary identified by their colonial morphology on mCCDA and sheep blood agar. The colonies appeared greyish, flat, moistened, with a tendency to spread and they may have a metal sheen suggesting *C. jejuni* isolates. Creamy-grey moist and more discrete colonies suggested that the colonies belong to *C. coli*. Additionally, on 5-7% lysed horse blood agar *Campylobacter* spp. had characteristic colonies of oil drop like appearance (translucent droplet-like colonies), slightly pink, round, convex, smooth and shiny, with regular edges. Occasionally, *Campylobacter* spp. showed greyish, flat, moistened, with a tendency to spread on lysed horse blood agar.

Campylobacter species were also confirmed by production of oxidase, the results were indicated by intense deep purple color appearance within few seconds on oxidase strip. The suspected *Campylobacter* organisms in freshly prepared cultures appeared as Gram negative (faint in color) curved bacilli. In old cultures, or when exposed to air for prolonged time periods, colonies transformed from spiral form to coccoid morphology.

Examination of motility under oil immersion lens showed that campylobacters are highly motile with characteristic corkscrew like motility, while in old cultures they were less motile. Moreover,

Bacteriological and Molecular Identification of some *Campylobacter* Species in Broilers and their Macrolide Resistance Profile

thermophilic campylobacters did not grow at 25°C in a microaerobic atmosphere or at 41.5°C aerobically for 48 hours.

3.2. Identification of *Campylobacter* species:

The results showed that all examined isolates (n=167) were positive for catalase production. All campylobacter isolates (100%) were resistant to nalidixic acid, therefore, it was difficult to differentiate *C. lari* and *C. coli*, while, *C. jejuni* was differentiated by rapid Sodium hippurate hydrolysis test. The results of Sodium hippurate hydrolysis test revealed that 95 out of 167 (56.9%) of isolates were positive, classifying them as *C. jejuni*.

3.3. Occurrence of *Campylobacter* spp. in different samples:

According to the phenotypic identification; *Campylobacter* spp. were isolated from 29.4% of the examined samples. The results demonstrated a high isolation rate of *Campylobacter* spp. in chickens from caecal part (41.2%), followed by thigh meat (31.4%), cloacal swabs (29.3%) and breast meat (27.5%).

Identification of campylobacters to the species level showed that *C. jejuni*, *C. coli*/*C. lari* and *C. hyointestinalis* were identified in 56.9, 40.1 and 3% of the examined samples, respectively. The highest isolation rate of *C. jejuni* was detected in caecal parts (80.9%), followed by cloacal swabs (55.3%), neck skin (53.8%) and breast meat (50%). The lowest isolation rate was in thigh meat (43.7%), (Table 1).

3.4. Molecular confirmation of representative campylobacter isolates:

3.4.1. Confirmation of campylobacter isolates by conventional PCR:

Forty-two campylobacter isolates (28 and 14 biochemically suspected *C. jejuni* and *C. coli* isolates, respectively) were confirmed by the amplification of 23S rRNA gene; an amplicon of 650 bp size was generated using conventional PCR.

3.4.2. Confirmation of *C. jejuni* and *C. coli* isolates by rtPCR:

Real time PCR targeting *hipO* gene specific for *C. jejuni* and *glyA* specific for *C. coli* were used for the confirmation of the selected phenotypically identified isolates. The results showed that all 28 *C. jejuni* and 14 *C. coli* isolates were confirmed by rtPCR. The specificity of the reactions was confirmed when primers and probes targeting *hipO* and *glyA* genes did not amplify DNA from other controls.

3.5. Antimicrobial susceptibility testing:

The results obtained from both methods revealed that all *C. jejuni* and *C. coli* isolates were resistant to antimicrobials of macrolides class. To overcome the difficulty in reading MIC results due to the presence of LHB, resazurin was used and recording of the results was based on the observation of color change. Active viable bacterial cells reduce the reagent (purple – blue) to pink colorless. The MIC after adding resazurin indicator was defined as the lowest antibiotic concentration that prevented the reagent color change (Figures: 1). The results of broth microdilution method revealed that *C. jejuni* and *C. coli* isolates were 100% resistant to antibiotics of FQ and macrolides classes.

Table 1: Occurrence of different *Campylobacter* spp. in the examined samples

Type of samples	Number examined	Total campylobacter isolates*	Number (proportion %)		
			<i>C. jejuni</i> **	<i>C. coli</i> / <i>C. lari</i> **	<i>C. hyointestinalis</i> **
Cloacal swabs	364	103 (28.3%)	57 (55.3%)	42 (40.8%)	4 (3.9%)
Neck skin	51	13 (25.5%)	7 (53.8%)	6 (46.2%)	0 (0%)
Breast meat	51	14 (27.5%)	7 (50%)	7 (50%)	0 (0%)
Thigh meat	51	16 (31.4%)	7 (43.7%)	9 (56.3%)	0 (0%)
Caecal parts	51	21 (41.2%)	17 (80.9%)	3 (14.3%)	1 (4.8%)
Total	568	167 (29.4%)	95 (56.9%)	67 (40.1%)	5 (3%)

* The isolation rate was calculated in relation to the total number of the examined samples.

** The isolation rate of each species was calculated in relation to the total no. of the isolated campylobacters.

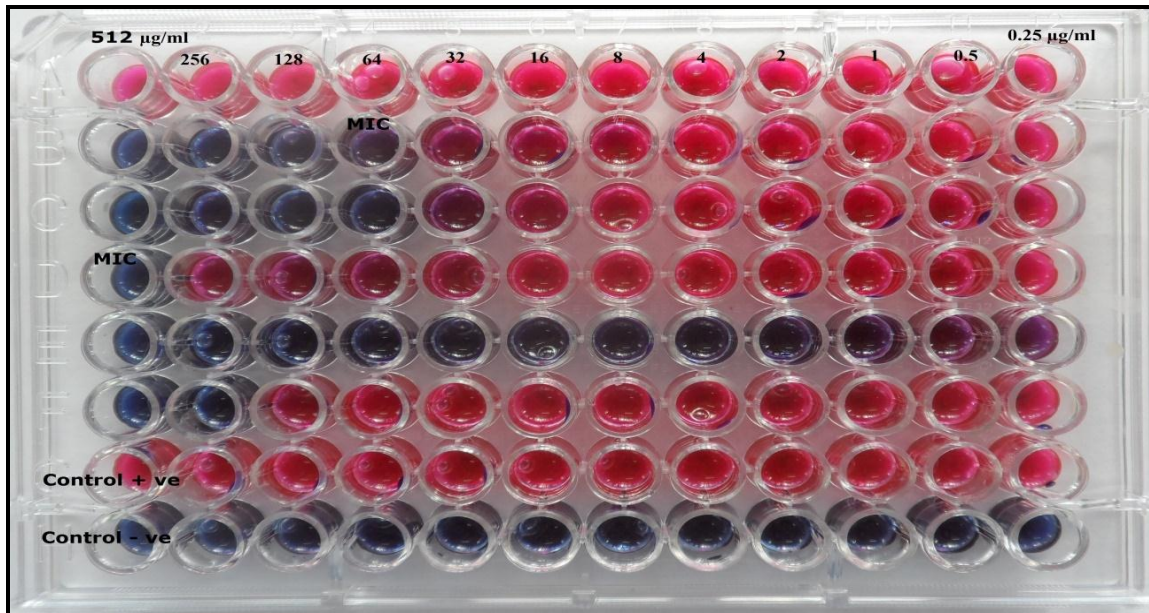


Figure 1: Reading results of broth microdilution test using resazurin reagent. Positive results; pink color, Negative results; blue or purple color, MIC; the lowest antibiotic concentration that prevented the reagent color change (blue color).

4. DISCUSSION

For the identification of thermophilic campylobacters to the species level, catalase test, susceptibility to nalidixic acid and cephalothin and rapid hippurate hydrolysis test were performed. In the current study,

the results showed that all campylobacter isolates were resistant to nalidixic acid. As a result, differentiation between *C. jejuni*, *C. lari* and *C. coli* based on the susceptibility to nalidixic acid was difficult.

Bacteriological and Molecular Identification of some *Campylobacter* Species in Broilers and their Macrolide Resistance Profile

The judgment on hippurate hydrolysis test which differentiates *C. jejuni* from *C. coli* isolates, is usually based on qualitative criteria which are not reliable and may lead to misinterpretation (Megraud, 1987). Thus, isolates which were used for further investigations for the detection of FQ and macrolides resistance were confirmed by PCR.

In the current study, *Campylobacter* spp. were isolated from 29.3% cloacal swabs. Similar isolation rate of 29% from broiler flocks was reported in Japan (Sabike et al., 2017). Nearly similar results of 35.1% (Abd El-Tawab et al., 2015) and 21.6% (Awadallah et al., 2014) were reported in Egypt. Comparable isolation rates of 31.9% in Vietnam (Carrique-Mas et al., 2014) and 39.2% in Estonia (Mäesaar et al., 2014), were also reported.

Different studies reported higher prevalence rates of *Campylobacter* spp., for instance; 58% in Brazil (Da Silva et al., 2016), 85% in Algeria (Messad et al., 2014) and 57% in NewZeland (Anderson et al., 2012). The aforementioned higher isolation rates could be attributed to the isolation of *Campylobacter* spp. from fresh fecal samples on the ground. The farm ground near poultry houses are suspected to be highly contaminated with *Campylobacter* spp. from different sources such as wild birds, rodents and free living pets (Studer et al., 1999). In addition, Pezzotti et al. (2003) and Salihu et al. (2012) reported higher isolation rates of 82.9% in Italy and 51.5% in Nigeria from chicken cloacal swabs, respectively. Such higher percentages compared to the obtained results during the

current study could be a result of campylobacter identification by only conventional methods in the two studies reported in Nigeria and Italy. However, an isolation rate of 69.8% from chicken cloacal swabs determined by PCR in Tanzania was reported (Mdegela et al., 2006). The authors attributed such high percentage to the extensive type of chicken management that increases the exposure of birds to campylobacter infection through insects, rodents, contaminated water and poor housing hygiene (Mdegela et al., 2006).

Lower *Campylobacter* spp. isolation rates of 1.5% and 6.9% from cloacal swabs were reported in Greece (Marinou et al., 2012) and Italy (Menna et al., 2005). The authors attributed the low isolation rate to strict biosecurity measures observed in the examined farms.

Out of the 103 campylobacter isolates from cloacal swabs, 55.3% were identified as *C. jejuni*. Comparable percentages of 46% in Egypt (Abd El-Tawab et al., 2015) and 68.1% in Argentina (Zbrun et al., 2015), were reported.

Higher isolation rates of *C. jejuni* were reported in different studies; 90% in Great Britain (Jorgensen et al., 2011) and 89% in Vietnam (Carrique-Mas et al., 2014). However, lower prevalence rate of 31.4% was obtained in Reunion Island (Henry et al., 2011). In Greece, *C. coli* was only identified from chicken cloacal swabs (Marinou et al., 2012). The authors attributed such results to the type of feed ration because *C. jejuni* do not frequently colonize in birds receiving plant protein based feed (Udayamputhoor et al., 2003).

Poultry is exposed to campylobacters at farm level due to insufficient biosecurity measures at the market outlets due to contamination of carcasses during different slaughtering processes (Parkar *et al.*, 2013). *Campylobacter* spp. were isolated from 27.5 and 31.4% of the examined breast and thigh meat samples, respectively. Comparable percentages of campylobacters were reported in chicken meat; 34.1% in Japan (Stella *et al.*, 2017), 21.7% in Ethiopia (Dadi and Asrat, 2016) and 29.1% in Greece (Economou *et al.*, 2015).

Higher isolation rates of campylobacters were documented; 61.6% in Italy (Pedonese *et al.*, 2017), 63.1% in China (Zhu *et al.*, 2016) and 58.8% in Korea (Wei *et al.*, 2016). While lower isolation rates of 17% in Brazil (Da Silva *et al.*, 2016) and 17.2% in China (Zhang *et al.*, 2016), were also reported.

The variation in *Campylobacter* spp. isolation rates among the previously mentioned studies could be attributed to difference in the sanitation levels during handling and processing of chicken, season of sampling and the laboratory methodologies employed for isolation (Shih, 2000).

C. jejuni was isolated from 43.7 and 50% of thigh and breast meat samples, respectively. Comparable percentage of *C. jejuni* isolation from chicken meat were documented in several studies; for instance, 41.9% in Italy (Pedonese *et al.*, 2017) and 52.5% in Korea (Wei *et al.*, 2016). Higher isolation rates of 76.9% in China (Zhang *et al.*, 2016) and 88.8% in Estonia (Mäesaar *et al.*, 2015), were reported.

The obtained results in the current study were lower than those reported in Japan where *C. jejuni* isolates were identified from 86.2 and 78.6% of breast meat and thigh meat samples, respectively (Sallam, 2007). However, in Egypt, Saad (2014) reported the identification of *C. jejuni* from 6.9% of the examined thigh meat samples.

Chicken skin provides suitable microenvironment for the survival of campylobacters due to accumulation of water which increases the surface area available for bacterial contamination (Miwa *et al.*, 2003). The isolation rate of campylobacters from skin samples was 25.5%, of which, 53.8% were identified as *C. jejuni*.

Different studies also reported the isolation of *Campylobacter* spp. from chicken skin samples; 68% in Sweden (Hansson *et al.*, 2015), 30.8% in Egypt (Abd El-Tawab *et al.*, 2015) and 68% in Sweden (Hansson *et al.*, 2015).

The detection of campylobacter in carcass skin varied significantly due to the fact that the slaughtering process varies between different slaughter houses and the degree of external contamination of the feathers during transport to slaughter can vary (Hansson *et al.*, 2015).

Manual slaughtering and evisceration, which is common in poultry pluck-shops based markets in Egypt, where fecal content leakage is common, may result in contaminating chicken meat (breast and thigh meat) and skin. The same observation was reported by Huang *et al.* (2016) in China and Saad (2014) in Egypt. The authors

Bacteriological and Molecular Identification of some *Campylobacter* Species in Broilers and their Macrolide Resistance Profile

concluded that chicken from wet markets that devoid hygienic measures were frequently and heavily contaminated with campylobacter.

Campylobacter spp. are ubiquitous foodborne pathogens that colonize the intestinal tract of chicken especially the caeca (Silva et al., 2011). *Campylobacter* spp. isolation rate of 41.2% from chicken caecal parts was obtained in the current study, of which, 80.9% were identified as *C. jejuni*. Comparable results were also reported as 56.1% in China (Han et al., 2016) and 41% in Egypt (Abd El-Tawab et al., 2015).

Higher isolation rates were previously obtained; 100% in Sweden (Hansson et al., 2015) and 98% in Algiers (Messad et al., 2014).

Gblossi Bernadette et al. (2012) reported that *Campylobacter* spp. are better detected by direct examination of the intestine than in the case of cloacal swabs. Such assumption was based on the fact that cecum is the main colonization site of *Campylobacter* spp. in chicken (Silva et al., 2011). The aforementioned higher isolation rates could be attributed to the isolation of campylobacters from caecal contents, where the load of bacteria could reach 10^{10} organisms per gram of caecal content (Silva et al., 2011).

The variation in *Campylobacter* spp. isolation rate between different studies could be attributed to different possible reasons, such as the type and site of the examined samples (Meremäe et al., 2010). Moreover, the seasonal factors, biosecurity, husbandry

and management and production system have the greatest impact on the prevalence rate of campylobacters (Chatur et al., 2014; Newell et al., 2011).

Another factor that might have an influence on the isolation rate of *Campylobacter* spp. is the age of the examined chickens (Newell et al., 2011). The contamination of broiler flocks by campylobacters generally occurs late (after 15–20 days of rearing) due to ability of the gut flora of the young birds to provide good protection against campylobacter colonization (Laisney et al., 2004). The prevalence of *Campylobacter* spp. in chicken is expected to be high in broilers slaughtered at 5–6 weeks (Bouwknegt et al., 2004), while in older chickens, the prevalence decreases reflecting acquired immunity (Kalupahana et al., 2013). During the current study, the examined samples were collected from chickens at 6 weeks old explaining the relatively high isolation rate of campylobacters.

Moreover, the methodology; isolation and identification techniques, has an impact factor which affected the analytical results (Mead et al., 2010). For example, Salvat et al. (2017) noticed highly significant decrease of heavily campylobacter contaminated carcasses when sampling method changed (from neck to leg skin) in a traditional free range broiler production along 23 year survey program. The isolation methodologies are laborious, and there are many broths and agars available. Some studies have evaluated the effectiveness of different broths and agar plates for their ability to isolate campylobacter from several

matrices to develop more efficient and lower cost methods (Gonsalves *et al.*, 2016). Seliwiorstow *et al.* (2016) demonstrated the impact of culture medium on the recovery of campylobacters from fresh and frozen naturally contaminated poultry meat samples with a great effect on the detection of campylobacters. Also, Oyarzabal *et al.* (2005) concluded that certain agars and broths are better than others for the isolation of campylobacter from certain samples with regards to time, preparation, performance and cost.

Although all that mentioned possible reasons, there is need for further research to explain the possible reasons on *Campylobacter* spp. distribution differences among studied company farms (Huang *et al.*, 2016).

The results obtained from both disc diffusion and broth microdilution testing methods in the current study showed that all *C. jejuni* and *C. coli* isolates (no=42) were 100% resistant to all examined macrolide agents. In accordance, the same findings were reported in Egypt (Hefny, 2014; Saad, 2014).

The uncontrolled and misuse of tylosin and erythromycin in poultry production in Egypt could be the reason for the high level of macrolides resistance in the current study. Ladely *et al.* (2007) and Lin *et al.* (2007) reported significantly increased frequencies of macrolides resistance when tylosin was administered at sub-therapeutic levels in *Campylobacter* species. Also, erythromycin resistance rate among *C. jejuni* and *C. coli* isolates increased after tylosin administration (Ladely *et al.*, 2007). This conclusion was

supported by Bester and Essack (2012) in South Africa, who reported that 88% of campylobacter isolates from poultry raised commercially; using macrolides agents, were macrolides resistant versus 0% for those isolates from small-scale family farms where no macrolide agents were used.

Unfortunately, resistance rates are much higher in parts of Asia and Africa; for example, in Nigeria, nearly 80% of strains are macrolides-resistant (Smith *et al.*, 1999). In the contrary, 100% sensitivity of *C. jejuni* isolates was reported in South Korea (Oh *et al.*, 2017) and Spain (Pérez-Boto *et al.*, 2015), where the use of macrolides was restricted.

In conclusion, the relatively high isolation rate of campylobacters from different parts of chicken carcasses during the current study could be attributed to lack of hygienic measures in pluck-shop markets. Thus, the control of campylobacter incidence in poultry is a major public health strategy for prevention of human campylobacteriosis. Also, the high levels of macrolide resistance in *C. jejuni* and *C. coli* isolates were reported which could be attributed to the widespread use of macrolides in chicken production. The current study recommends further studies on the mechanisms macrolides resistance in campylobacters.

5. REFERENCES

Abd El-Tawab, A.A., Ammar, A.M., Ahmed, H.A., El Hofy, F.I., Hefny, A.A., 2015. Bacteriological and Molecular Identification of *Campylobacter* spp. in Chickens and Humans, at Zagazig City, Egypt.

Bacteriological and Molecular Identification of some *Campylobacter* Species
in Broilers and their Macrolide Resistance Profile

- Benha veterinary medical journal 28, 17-26.
- Anderson, J., Horn, B.J., Gilpin, B.J., 2012. The prevalence and genetic diversity of *Campylobacter spp.* in domestic 'backyard' poultry in Canterbury, New Zealand. *Zoonoses and public health* 59, 52-60.
- Awadallah, M., Ahmed, H., El-Gedawy, A., Saad, A., 2014. Molecular identification of *C. jejuni* and *C. coli* in chicken and humans, at Zagazig, Egypt, with reference to the survival of *C. jejuni* in chicken meat at refrigeration and freezing temperatures. *International Food Research Journal* 21.
- Belanger, A.E., Shryock, T.R., 2007. Macrolide-resistant campylobacter: the meat of the matter. *Journal of Antimicrobial Chemotherapy* 60, 715-723.
- Bester, L.A., Essack, S.Y., 2012. Observational study of the prevalence and antibiotic resistance of *Campylobacter spp.* from different poultry production systems in KwaZulu-Natal, South Africa. *Journal of food protection* 75, 154-159.
- Bouwknegt, M., Van De Giessen, A., Dam-Deisz, W., Havelaar, A., Nagelkerke, N., Henken, A., 2004. Risk factors for the presence of *Campylobacter spp.* in Dutch broiler flocks. *Preventive veterinary medicine* 62, 35-49.
- Bronnec, V., Turoňová, H., Bouju, A., Cruveiller, S., Rodrigues, R., Demnerova, K., Tresse, O., Haddad, N., Zagorec, M., 2016. Adhesion, biofilm formation, and genomic features of *C. jejuni* Bf, an atypical strain able to grow under aerobic conditions. *Frontiers in microbiology* 7.
- Ca-SFM, 2013. Comité de l'Antibiogramme de la Société Française de Microbiologie; proposer les recommandations 2013.
- Carrique-Mas, J.J., Bryant, J., Cuong, N., Hoang, N., Campbell, J., Hoang, N., Dung, T., Duy, D., Hoa, N., Thompson, C., 2014. An epidemiological investigation of campylobacter in pig and poultry farms in the Mekong delta of Vietnam. *Epidemiology and infection* 142, 1425.
- Chang, Q., Wang, W., Regev-Yochay, G., Lipsitch, M., Hanage, W.P., 2015. Antibiotics in agriculture and the risk to human health: how worried should we be? *Evolutionary applications* 8, 240-247.
- Chatur, Y.A., Brahmabhatt, M.N., Modi, S., Nayak, J.B., 2014. Fluoroquinolone resistance and detection of topoisomerase gene mutation in *C. jejuni* isolated from animal and human sources. *International Journal of Current Microbiology and Applied Sciences (IJCMAS)* 3, 773-783.
- CLSI, 2012. Performance Standards for Antimicrobial Disk Susceptibility

- Tests; Approved Standard—Eleventh Edition, CLSI document M02-A11. Wayne, PA. Clinical and Laboratory Standards Institute 2012.
- Da Silva, D.T., Tejada, T.S., Blum-Menezes, D., Dias, P.A., Timm, C.D., 2016. *Campylobacter spp.* isolated from poultry and humans, and their analysis using PFGE in southern Brazil. *International journal of food microbiology* 217, 189-194.
- Dadi, L., Asrat, D., 2016. Prevalence and antimicrobial susceptibility profiles of thermotolerant campylobacter strains in retail raw meat products in Ethiopia. *The Ethiopian Journal of Health Development (EJHD)* 22.
- Economou, V., Zisides, N., Gousia, P., Petsios, S., Sakkas, H., Soutos, N., Papadopoulou, C., 2015. Prevalence and antimicrobial profile of campylobacter isolates from free-range and conventional farming chicken meat during a 6-year survey. *Food Control* 56, 161-168.
- EFSA, 2008. The community summary report on trends and sources of zoonoses, zoonotic agents and food-borne outbreaks in the European Union in 2008. *EFSA Journal* 8, 1496.
- EFSA, ECDC, 2015. European food safety authority and the european centre for disease prevention and control; EU summary report on antimicrobial resistance in zoonotic and indicator bacteria from humans, animals and food in 2013. *EFSA Journal* 13, 4036.
- Ellerbroek, L., Lienau, J.A., Klein, G., 2010. *Campylobacter spp.* in Broiler Flocks at Farm Level and the Potential for Cross-Contamination During Slaughter. *Zoonoses and public health* 57, e81-e88.
- EUCAST, 2017. The European Committee on Antimicrobial Susceptibility Testing. Breakpoint tables for interpretation of MICs and zone diameters. Version 7.1, 2017. <http://www.eucast.org>.
- Gblossi Bernadette, G., Eric Essoh, A., Solange, E., Natalie, G., Souleymane, B., Lamine Sébastien, N., Mireille, D., 2012. Prevalence and antimicrobial resistance of thermophilic campylobacter isolated from chicken in Côte d'Ivoire. *International journal of microbiology* 2012.
- Gonsalves, C.C., Borsoi, A., Perdoncini, G., Rodrigues, L.B., do Nascimento, V.P., 2016. Campylobacter in broiler slaughter samples assessed by direct count on mCCDA and Campy-Cefex agar. *brazilian journal of microbiology* 47, 764-769.
- Griggs, D.J., Johnson, M.M., Frost, J.A., Humphrey, T., Jørgensen, F., Piddock, L.J., 2005. Incidence and mechanism of ciprofloxacin resistance in *Campylobacter spp.* isolated from commercial poultry flocks in the United Kingdom before, during, and after fluoroquinolone treatment. *Antimicrobial agents and chemotherapy* 49, 699-707.

Bacteriological and Molecular Identification of some *Campylobacter* Species
in Broilers and their Macrolide Resistance Profile

- Han, X., Zhu, D., Lai, H., Zeng, H., Zhou, K., Zou, L., Wu, C., Han, G., Liu, S., 2016. Prevalence, antimicrobial resistance profiling and genetic diversity of *C. jejuni* and *C. coli* isolated from broilers at slaughter in China. *Food Control* 69, 160-170.
- Hansson, I., Nyman, A., Lahti, E., Gustafsson, P., Engvall, E.O., 2015. Associations between campylobacter levels on chicken skin, underlying muscle, caecum and packaged fillets. *Food microbiology* 48, 178-181.
- Hefny, A., 2014. Occurrence, antibiotic resistance and genotyping of *C. jejuni* strains isolated from chickens, their meat and humans Master thesis Bacteriology Department, Faculty of veterinary medicine Benha University, Egypt.
- Henry, I., Reichardt, J., Denis, M., Cardinale, E., 2011. Prevalence and risk factors for *Campylobacter spp.* in chicken broiler flocks in Reunion Island (Indian Ocean). *Preventive veterinary medicine* 100, 64-70.
- Huang, J., Zong, Q., Zhao, F., Zhu, J., Jiao, X.-a., 2016. Quantitative surveys of salmonella and campylobacter on retail raw chicken in Yangzhou, China. *Food Control* 59, 73-86.
- Iovine, N.M., Pursnani, S., Voldman, A., Wasserman, G., Blaser, M.J., Weinrauch, Y., 2008. Reactive nitrogen species contribute to innate host defense against *C.jejuni*. *Infection and immunity* 76, 986-993.
- ISO, 2006. Microbiology of Food and Animal Feeding Stuffs – Horizontal Method for Detection and Enumeration of *Campylobacter spp.* Part 1: Detection Method. Geneva: International Organization for Standardization. [ISO 10272-1:2006.]
- Jorgensen, F., Ellis-Iversen, J., Rushton, S., Bull, S., Harris, S., Bryan, S., Gonzalez, A., Humphrey, T., 2011. Influence of season and geography on *C. jejuni* and *C. coli* subtypes in housed broiler flocks reared in Great Britain. *Applied and environmental microbiology* 77, 3741-3748.
- Kalupahana, R., Kottawatta, K., Kanankege, K., van Bergen, M., Abeynayake, P., Wagenaar, J., 2013. Colonization of *Campylobacter spp.* in broiler chickens and laying hens reared in tropical climates with low-biosecurity housing. *Applied and environmental microbiology* 79, 393-395.
- Ladely, S.R., Harrison, M.A., Fedorka-Cray, P.J., Berrang, M.E., Englen, M.D., Meinersmann, R.J., 2007. Development of macrolide-resistant campylobacter in broilers administered subtherapeutic or therapeutic concentrations of tylosin. *Journal of food protection* 70, 1945-1951.
- LaGier, M.J., Joseph, L.A., Passaretti, T.V., Musser, K.A., Cirino, N.M., 2004. A real-time multiplexed PCR assay for rapid detection and differentiation of

- C. jejuni* and *C. coli*. Molecular and cellular probes 18, 275-282.
- Laisney, M.-J., Gillard, M.-O., Salvat, G., 2004. Influence of bird strain on competitive exclusion of *C. jejuni* in young chicks. British poultry science 45, 49-54.
- Lin, J., Yan, M., Sahin, O., Pereira, S., Chang, Y.-J., Zhang, Q., 2007. Effect of macrolide usage on emergence of erythromycin-resistant campylobacter isolates in chickens. Antimicrobial agents and chemotherapy 51, 1678-1686.
- Mäesaar, M., Kramarenko, T., Meremäe, K., Sögel, J., Lillenberg, M., Häkkinen, L., Ivanova, M., Kovalenko, K., Hörman, A., Hänninen, M.L., 2015. Antimicrobial resistance profiles of *Campylobacter spp.* isolated from broiler chicken meat of Estonian, Latvian and Lithuanian Origin at Estonian retail level and from patients with severe enteric infections in Estonia. Zoonoses and public health, 63, 89 -96.
- Mäesaar, M., Praakle, K., Meremäe, K., Kramarenko, T., Sögel, J., Viltrop, A., Muutra, K., Kovalenko, K., Matt, D., Hörman, A., 2014. Prevalence and counts of *Campylobacter spp.* in poultry meat at retail level in Estonia. Food control 44, 72-77.
- Marinou, I., Bersimis, S., Ioannidis, A., Nicolaou, C., Mitroussia-Ziouva, A., Legakis, N.J., Chatzipanagiotou, S., 2012. Identification and antimicrobial resistance of *Campylobacter spp.* isolated from animal sources. Frontiers in microbiology 3, 58.
- Mdegela, R.H., Nonga, H.E., Ngowi, H.A., Kazwala, R.R., 2006. Prevalence of thermophilic campylobacter infections in humans, chickens and crows in Morogoro, Tanzania. Journal of veterinary medicine. B, Infectious diseases and veterinary public health 53, 116-121.
- Mead, G., Lammerding, A.M., Cox, N., Doyle, M.P., Humbert, F., Kulikovskiy, A., Panin, A., Nascimento, V.P.D., Wierup, M., 2010. Scientific and technical factors affecting the setting of salmonella criteria for raw poultry: a global perspective. Journal of food protection 73, 1566-1590.
- Megraud, F., 1987. Diagnostic bacteriologique des infections à campylobacter. Revue Française des Laboratoires 156, 2-16.
- Menna, L.F., Matteoli, G., Fontanella, M., Cuomo, A., De Paola, A., Pepe, T., Di Marco, I., Dipineto, L., 2005. Prevalence of *C. jejuni* in poultry breeder flocks. Italian Journal of Animal Science 4, 269-271.
- Meremäe, K., Elias, P., Tamme, T., Kramarenko, T., Lillenberg, M., Karus, A., Hänninen, M.-L., Roasto, M., 2010. The occurrence of *Campylobacter spp.* in Estonian broiler chicken production in 2002–2007. Food Control 21, 272-275.
- Messad, S., Hamdi, T.-M., Bouhamed, R., Ramdani-Bougoussa, N., Tazir, M.,

Bacteriological and Molecular Identification of some *Campylobacter* Species
in Broilers and their Macrolide Resistance Profile

2014. Frequency of contamination and antimicrobial resistance of thermotolerant campylobacter isolated from some broiler farms and slaughterhouses in the region of Algiers. *Food control* 40, 324-328.
- Miwa, N., Takegahara, Y., Terai, K., Kato, H., Takeuchi, T., 2003. *Campylobacter jejuni* contamination on broiler carcasses of *C. jejuni*-negative flocks during processing in a Japanese slaughterhouse. *International journal of food microbiology* 84, 105-109.
- Moore, J.E., Corcoran, D., Dooley, J.S., Fanning, S., Lucey, B., Matsuda, M., McDowell, D.A., Megraud, F., Millar, B.C., O'Mahony, R., O'Riordan, L., O'Rourke, M., Rao, J.R., Rooney, P.J., Sails, A., Whyte, P., 2005. *Campylobacter*. *Veterinary research* 36, 351-382.
- Neimann, J., Engberg, J., Mølbak, K., Wegener, H.C., 2003. A case-control study of risk factors for sporadic campylobacter infections in Denmark. *Epidemiology & Infection* 130, 353-366.
- Newell, D., Elvers, K., Dopfer, D., Hansson, I., Jones, P., James, S., Gittins, J., Stern, N., Davies, R., Connerton, I., 2011. Biosecurity-based interventions and strategies to reduce *Campylobacter spp.* on poultry farms. *Applied and environmental microbiology* 77, 8605-8614.
- Oh, J.-Y., Kwon, Y.-K., Wei, B., Jang, H.-K., Lim, S.-K., Kim, C.-H., Jung, S.-C., Kang, M.S., 2017. Epidemiological relationships of *C. jejuni* strains isolated from humans and chickens in South Korea. *Journal of Microbiology* 55, 13-20.
- Oxoid, 2006. *Oxoid Manual* 9th Edition 2006.
- Oyarzabal, O.A., Macklin, K.S., Barbaree, J.M., Miller, R.S., 2005. Evaluation of agar plates for direct enumeration of *Campylobacter spp.* from poultry carcass rinses. *Applied and environmental microbiology* 71, 3351-3354.
- Parkar, S.F., Sachdev, D., Kamble, A., Suresh, G., Munot, H., Hanagal, D., Shouche, Y., Kapadnis, B., 2013. Prevalence, seasonality and antibiotic susceptibility of thermophilic campylobacters in ceca and carcasses of poultry birds in the live-bird market. *African Journal of Microbiology Research* 7, 2442-2453.
- Pedonese, F., Nuvoloni, R., Turchi, B., Torracca, B., Di Giannatale, E., Marotta, F., Cerri, D., 2017. Prevalence, phenotypic and genetic diversity of campylobacter in poultry fresh meat and poultry products on retail sale in Tuscany (Italy). *Veterinaria italiana* 53, 29.
- Pérez-Boto, D., Acebo, P., García-Peña, F.J., Abad, J.C., Echeita, M.A., Amblar, M., 2015. Isolation of a point mutation associated with altered expression of the *cmeABC* efflux pump in a multidrug-resistant *C.*

- jejuni* population of poultry origin. Journal of Global Antimicrobial Resistance 3, 115-122.
- Pezzotti, G., Serafin, A., Luzzi, I., Mioni, R., Milan, M., Perin, R. 2003. Occurrence and resistance to antibiotics of *C. jejuni* and *C. coli* in animals and meat in northeastern Italy. International journal of food microbiology 82, 281-287.
- Saad, A.E.M., 2014. Zoonotic Importance of campylobacteriosis at Sharkia Province. Master thesis Zoonoses Department, Faculty of veterinary medicine Zagazig University, Egypt.
- Sabike, I.I., Uemura, R., Kirino, Y., Mekata, H., Sekiguchi, S., Farid, A.S., Goto, Y., Horii, Y., Yamazaki, W., 2017. Assessment of the *C. jejuni* and *C. coli* in broiler chicken ceca by conventional culture and loop-mediated isothermal amplification method. Food Control 74, 107-111.
- Salihu, M., Junaidu, A., Magaji, A., Yakubu, Y., 2012. Prevalence and antimicrobial resistance of thermophilic campylobacter isolates from commercial broiler flocks in Sokoto, Nigeria. Research Journal of Veterinary Sciences 5, 51-58.
- Sallam, K.I., 2001. Campylobacter contamination in retailed chicken carcasses from Mansoura, Egypt, and its relation to public health. Alexandria Journal of Veterinary Sciences 17.
- Sallam, K.I., 2007. Prevalence of campylobacter in chicken and chicken by-products retailed in Sapporo area, Hokkaido, Japan. Food Control 18, 1113-1120.
- Salvat, G., Guyot, M., Protino, J., 2017. Monitoring salmonella, campylobacter, *E. coli* and *Staphylococcus aureus* in traditional free-range 'Label Rouge' broiler production: a 23-year survey programme. Journal of applied microbiology 122, 248-256.
- Seliwiorstow, T., De Zutter, L., Houf, K., Botteldoorn, N., Baré, J., Van Damme, I., 2016. Comparative performance of isolation methods using Preston broth, Bolton broth and their modifications for the detection of *Campylobacter spp.* from naturally contaminated fresh and frozen raw poultry meat. International journal of food microbiology 234, 60-64.
- Shih, D.Y.-C., 2000. Isolation and identification of enteropathogenic *Campylobacter spp.* from chicken samples in Taipei. Journal of food protection 63, 304-308.
- Silva, J., Leite, D., Fernandes, M., Mena, C., Gibbs, P.A., Teixeira, P., 2011. *Campylobacter spp.* as a foodborne pathogen: a review. Frontiers in microbiology 2, 200.
- Smith, S., Sansa, T., Coker, A., 1999. Antibiotic susceptibility patterns and beta-lactamase production of animal and human isolates of campylobacter in Lagos, Nigeria. Zeitschrift für Naturforschung C 54, 583-586.

Bacteriological and Molecular Identification of some *Campylobacter* Species
in Broilers and their Macrolide Resistance Profile

- Stella, S., Soncini, G., Ziino, G., Panebianco, A., Pedonese, F., Nuvoloni, R., Di Giannatale, E., Colavita, G., Alberghini, L., Giaccone, V., 2017. Prevalence and quantification of thermophilic *Campylobacter spp.* in Italian retail poultry meat: Analysis of influencing factors. *Food microbiology* 62, 232-238.
- Studer, E., Lüthy, J., Hübner, P., 1999. Study of the presence of *C. jejuni* and *C. coli* in sand samples from four Swiss chicken farms. *Research in microbiology* 150, 213-219.
- Takkinen, J., Ammon, A., Robstad, O., Breuer, T., 2002. The *Campylobacter* Working Group. European Survey on *Campylobacter* Surveillance and Diagnostics 2000, *Campylobacter Infections*. Report to the European Commission, DG SANCO 4 (Berlin, 1-107).
- Udayamputhoor, R.S., Hariharan, H., Van Lunen, T.A., Lewis, P.J., Heaney, S., Price, L., Woodward, D., 2003. Effects of diet formulations containing proteins from different sources on intestinal colonization by *C. jejuni* in broiler chickens. *Canadian journal of veterinary research* 67, 204-212.
- Vandepitte, J., Verhaegen, J., 2003. Basic laboratory procedures in clinical bacteriology. 2nd edition. World Health Organization, Geneva, Switzerland, 2003, 42- 43.
- Waino, M., Bang, D.D., Lund, M., Nordentoft, S., Andersen, J.S., Pedersen, K., Madsen, M., 2003. Identification of *Campylobacter* isolated from Danish broilers by phenotypic tests and species-specific PCR assays. *Journal of applied microbiology* 95, 649-655.
- Wang, G., Clark, C.G., Taylor, T.M., Pucknell, C., Barton, C., Price, L., Woodward, D.L., Rodgers, F.G., 2002. Colony multiplex PCR assay for identification and differentiation of *C. jejuni*, *C. coli*, *C. lari*, *C. upsaliensis*, and *C. fetus* subsp. *fetus*. *Journal of clinical microbiology*, 40, 4744-4747.
- Wei, B., Cha, S.-Y., Yoon, R.-H., Kang, M., Roh, J.-H., Seo, H.-S., Lee, J.-A., Jang, H.-K., 2016. Prevalence and antimicrobial resistance of *Campylobacter spp.* isolated from retail chicken and duck meat in South Korea. *Food Control* 62, 63-68.
- Zbrun, M., Olivero, C., Romero-Scharpen, A., Rossler, E., Soto, L., Astesana, D., Blajman, J., Berisvil, A., Signorini, M., Frizzo, L., 2015. Antimicrobial resistance in thermotolerant *Campylobacter* isolated from different stages of the poultry meat supply chain in Argentina. *Food Control* 57, 136-141.
- Zhang, T., Luo, Q., Chen, Y., Li, T., Wen, G., Zhang, R., Luo, L., Lu, Q., Ai, D., Wang, H., 2016. Molecular epidemiology, virulence determinants and antimicrobial resistance of *Campylobacter*

- spreading in retail chicken meat in Central China. Gut Pathog 8, 48.
- Zhu, J., Yao, B., Song, X., Wang, Y., Cui, S., Xu, H., Yang, B., Huang, J., Liu, G., Yang, X., 2016. Prevalence and Quantification of campylobacter Contamination on Raw Chicken Carcasses for Retail Sale in China. Food Control.
- Zilbauer, M., Dorrell, N., Wren, B.W., Bajaj-Elliott, M., 2008. *Campylobacter jejuni*-mediated disease pathogenesis: an update. Transactions of the Royal Society of Tropical Medicine and Hygiene 102, 123-129.

التصنيف البكتريولوجي و الجزيئي لأنواع الكامبيلوباكتري في دجاج التسمين وتحديد مقاومته للماكروبيد

أشرف عواد عبد التواب^١، أحمد محمد عمار^٢، هبة أحمد عبد الله^٣، فاطمة إبراهيم الحوفي^١، أحمد حفني عبد الفتاح^٤
^١قسم البكتريا والفطريات والمناعة - كلية الطب البيطري - جامعة بنها. ^٢قسم الميكروبيولوجي - كلية الطب البيطري - جامعة الزقازيق. ^٣قسم الأمراض المشتركة - كلية الطب البيطري - جامعة الزقازيق. ^٤المستشفى البيطري - كلية الطب البيطري - جامعة الزقازيق.

الملخص العربي

جنس الكامبيلوباكتري متضمنا أنواع عديدة ذو أهمية كبيرة و يعتبر من المسببات الكبرى للإسهالات الحادة في الإنسان علي مستوي العالم. تم إجراء هذه الدراسة لتحديد مدى تواجد الكامبيلوباكتري الحرارية في دجاج التسمين و تحديد مدى مقاومتها للماكروبيد خصوصا في كلا من الكامبيلوباكتري جوجيناوي و الكامبيلوباكتري كولي و تم جمع ما مجموعه ٥٦٨ عينة (٣٦٤ مسحة من الجلد و ٥١ من كل من لحم الصدر و الفخذ و جلد الرقبة) من دجاج اللحم في سن الذبح من منافذ البيع مدينة المحلية في الزقازيق بمحافظة الشرقية و تم عزلها من مسحات فتحة المجمع و جلد عنق و لحم الصدر و الفخذ و جزء الأعور بنسب ٢٩.٣٪؛ ٢٥.٥٪؛ ٢٧.٥٪؛ ٣١.٤٪ و ٤١.٢٪ علي التوالي. تم تحديد الكامبيلوباكتري جوجيناوي في ٥٧ مسحات فتحة المجمع (٥٥.٣٪)، ٧ جلد الرقبة (٥٣.٨٪)، ٧ لحم الصدر (٥٠٪)، ٧ لحم الفخذ (٤٣.٧٪) و ١٧ جزء الأعور (٨٠.٩٪). اثنان وأربعون عزلة للكامبيلوباكتري (٢٨ كامبيلوباكتري جوجيناوي و ١٤ الكامبيلوباكتري كولي الذي تم تصنيفهم بناءا عن الإختبارات الكيميائية) تم التأكد منها جينيا بالإعتماد علي جين ٢٣ اس الريبوسومي للحمض النووي الريبوزي و كذلك تم تأكيد عزلات الكامبيلوباكتري جوجيناوي وباستخدام تفاعل البلمرة المتسلسل الوقي الفعلي للهيبوريكاز جين وكذلك استخدم جين جلي أ لتمييز الكامبيلوباكتري كولي (عدد= ١٤) وتم تقييم العزلات التي تم تأكيدها جينا لتحديد مقاومتها للماكروبيد باستخدام نشر القرص وطرق اختبار التخفيف الجزئي للمرق و وجد انها كلها مقاومة للماكروبيد لذا المزيد من الأبحاث ضرورية اتوضيح طريقة حدوث هذه المقاومة.