

Sympathetic hyperactivity in chronic heart failure; the role of ¹²³I-MIBG for the assessment of appropriate device allocation

Verschure, O.D. ^{*} Eck - Smit, V. B ^{*} ; Somsen, G. A. ^{**} ; Verberne, J. H. ^{*}**

^{*}Department of Nuclear Medicine, Academic Medical Center, University of Amsterdam, the Netherlands, ^{**}Department of Cardiology, Onze Lieve Vrouwe Gasthuis, Amsterdam, the Netherlands

Chronic heart failure

Chronic heart failure (CHF) is a complex syndrome characterized by impaired left ventricle function and increased activation of the sympathetic nervous system. The mortality rate is approximately 10% in the first month after onset and increases after 5 years up to 54% in men and 40% in women.¹ Although beta-blockers, angiotensin-converting enzyme (ACE) inhibitors, angiotensin receptor blockers and diuretics have improved the prognosis of these patients, the outcome remains unfavorable.^{2-4, 4} Even when treated according to the latest guidelines, most studies report annual mortality rates between 8 and 10 %. The majority of the mortality can be attributed to progression of heart failure, ventricular arrhythmias or sudden cardiac death. The use of devices like cardiac resynchronization therapy (CRT) and implantable cardioverter-defibrillators (ICD) have further improved the prognosis of CHF, but these devices have their disadvantages like high costs, operative complication and device malfunction.^{5,6} Although there is a plethora of parameters associated with fatal arrhythmias, cardiac death and long-term prognosis in patients

with CHF, it remains a challenge to identify those patients who are at the highest risk of death and who are most likely to benefit from currently available therapies. In this setting the parameters most reported on in patients with CHF are amongst others decreased left ventricular systolic function, renal dysfunction, broadening of the QRS complex, lower blood pressure, lower functional capacity (i.e. higher NYHA functional class) and higher plasma concentration of brain natriuretic peptide (BNP). In addition to these patient driven issues, there are socio-economic considerations with respect to the ever increasing costs of healthcare and the inevitable subsequent constraints on healthcare budget, especially with the use of expensive devices. Taken these issues together there is pressing call to improve risk stratification for CHF patients, with a special focus on identification of patients likely to benefit from more aggressive and device driven therapies.

Key words: MIBG, heart failure, cardiac sympathetic imaging, prognosis

Correspondence author:

D.O. Verschure, MD
Department of Nuclear Medicine,
Academic Medical Centre, University of Amsterdam
P.O. Box 22700
1100 DE Amsterdam The Netherlands
Phone: 0031-20-5669111
Fax: 0031-20-5669092
Email: d.o.verschure@amc.uva.nl

Pathophysiology

The innervation of the heart is regulated by the autonomic nervous system and consists of both the sympathetic and the parasympathetic nervous systems. Sympathetic activation leads to increased heart rate, a more forceful contraction and increased atrioventricular conduction, while the parasympathetic system predominantly regulates the heart rate. Norepinephrine (NE) is the neurotransmitter of the sympathetic system and is stored in vesicles in the presynaptic nerve terminals. When NE is released in the synaptic cleft it stimulates the post-synaptic beta-receptors. (Figure 1)

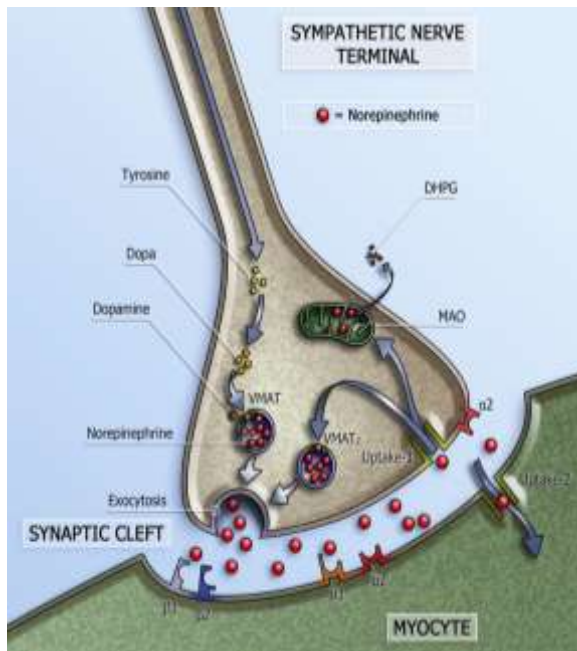


Figure 1. Schematic representation of the sympathetic synapse. Norepinephrine is synthesized within neurons by an enzymatic cascade. Dihydroxyphenylalanine (DOPA) is generated from tyrosine and subsequently converted to dopamine by DOPA decarboxylase. Dopamine is transported into storage vesicles by the energy-requiring vesicular monoamine transporter (VMAT). Norepinephrine is synthesized by dopamine β -hydroxylase within these vesicles. Neuronal stimulation leads to norepinephrine release through fusion of vesicles with the neuronal membrane (exocytosis).

Apart from neuronal stimulation, release is also regulated by a number of presynaptic receptor systems, including α_2 -adrenergic receptors, which provide negative feedback for exocytosis. Most norepinephrine undergoes reuptake into nerve terminals by the presynaptic norepinephrine transporter (uptake-1 mechanism) and is re-stored in vesicles (following uptake by vesicular amine transporter 2 (VMAT2)) or is metabolized in cytosol dihydroxyphenylglycol (DHPG) by monoamine oxidase (MAO).

In patients with CHF compensation mechanisms like the Renine-Aldosterone-Angiotensin-System (RAAS) and the sympathetic nervous system are activated. Initially, stimulation by NE helps to compensate for impaired myocardial function, but long-term NE excess had detrimental effects on myocardial structure and function causing remodeling of the left ventricle. In CHF patients, exocytosis of NE from in the presynaptic vesicles is increased. In addition, the NE re-uptake via norepinephrine transporter (also called uptake-1) in the sympathetic terminal nerve axons is decreased. This results in increased NE concentration in the synaptic cleft which gives rise to a down regulation of post-synaptic beta-receptors.⁷ In post mortal hearts from patients with severe CHF, 50% reduction in beta-adrenergic receptor density has been reported.⁸ Down regulation of post-synaptic beta-adrenergic receptors leads to left ventricle remodeling. This phenomenon is also seen after myocardial infarction and in hypertrophic cardiomyopathy.^{9, 10}

Sympathetic hyperactivity is an important factor in the genesis of potential lethal ventricular arrhythmias in patients with impaired ventricular function. These patients have an appropriate substrate that is able to develop rhythm abnormalities, which may be related to enhanced automaticity, triggered automaticity, and reentrant mechanisms. These mechanisms are

enhanced by release of NE. Still, the explanation for the link between sympathetic hyperactivity and ventricular arrhythmias is still not clear. One possible association is the fact that nonuniform denervated myocardium be viable and hyperresponsive to NE.¹¹ It is also possible that denervated but viable myocardium in the infarct zone may be prone to generate reentrant ventricular tachycardia circuits. Imaging studies with SPECT and PET have shown that the presence of denervated but still viable myocardium could contribute to the development of ventricular arrhythmias.¹²⁻¹⁴

Imaging cardiac sympathetic activity

Cardiac sympathetic activity can non-invasively be visualized by radionuclide imaging. At the pre-synaptic level, ¹⁸F-Fluoridopine is available to assess NE synthesis.^{15, 16} ¹¹C-hydroxyephedrine, ¹¹C-ephedrine and ¹²³I-meta-iodobenzylguanidine (¹²³I-MIBG) are available to access the pre-synaptic NE reuptake and storage.¹⁷⁻²⁰ ¹¹C-carazolol and ¹¹C-CGP (4-(3-*t*-butylamino-2-hydroxypropoxy)-benzimidazol-1) are available to access beta-adrenergic receptor expression and density.²¹ Of all these tracers only ¹²³I-MIBG can be used on conventional gamma-cameras. For the use of all other tracers a PET-camera is needed. Furthermore ¹²³I-MIBG requires no availability of on-site cyclotron, like the other tracers. Therefore it is the most widely used imaging agent for studying causes and effects of cardiac sympathetic hyperactivity. Meta-iodobenzylguanidine (MIBG) is a NE analog and shares the same presynaptic uptake, storage and release mechanism as NE, but is not metabolized, allowing imaging. The first clinical application of ¹²³I-MIBG was imaging of the adrenal medulla and neural crest-derived tumors such as pheochromocytoma and neuroblastoma.^{22, 23} In 1980 the potential use of ¹²³I-MIBG for cardiac imaging was suggested.^{20, 24}

Imaging techniques and quantification with ¹²³I-MIBG

Recently Flotats et al. have published a recommendation for standardization of cardiac ¹²³I-MIBG scintigraphy.²⁵ In short the publication recommends the following protocol: 30 minutes before injection of 185 MBq of ¹²³I-MIBG the thyroid is blocked by potassium perchlorate or potassium iodine. A 10 minute planar image is acquired from an anterior thoracic view (128x128 or 256x256 matrix) at 10 to 15 minutes (early image) and at 4 hours (late image) post injection of ¹²³I-MIBG using a gamma-camera equipped with a low energy general purpose (LEHR) collimator, but a medium collimator is preferable. This approach provides a highly reproducible index of cardiac sympathetic activity.²⁶ The ¹²³I-MIBG uptake is semi-quantified by calculating a heart-mediastinum (H/M) ratio by manually drawing a region of interest (ROI) over the left ventricle compared with a fix position in the upper mediastinum.^{25, 27-}

²⁹ **(Figure 2)** The washout (WO) rate from early to late images can be calculated (see formula). The early H/M ratio reflects the integrity of sympathetic nerve terminals. The late H/M ratio offers information about neuronal function resulting from uptake, storage and release. The WO reflects neuronal integrity of sympathetic tone/drive.

Washout (WO) =

$$\left\{ \frac{(\text{early H/M} - (\text{late H/M}))}{\text{early H/M}} \right\} \times 100\%$$

Optional a 30 minute single photon emission tomography (SPECT) image can be preformed, allowing evaluation of regional sympathetic activity. From these images polar maps can be reconstructed for assessment of the defect extent en severity. ¹²³I-MIBG SPECT images can easily be used to compare with the SPECT myocardial perfusion images to examine the difference between regional innervation and perfusion.³⁰

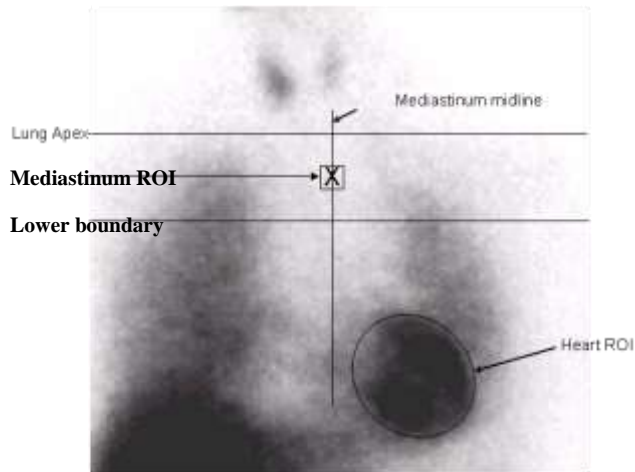


Figure 2. Example of processing procedure for late planar ^{123}I -MIBG images. The positioning of the mediastinal ROI was standardized in relation to the lung apex, the lower boundary of the upper mediastinum, and the midline between the lungs.

CHF therapy and sympathetic activity

Pharmacological treatment using beta-blockers, ACE-inhibitors, and angiotensin receptor blockers is recognized as an initial standard strategy for patients with CHF.²⁻⁴ This has been shown to ameliorate long-term prognosis by improving LVEF and functional capacity. Using semi-quantitative analysis, these beneficial effects are associated with an increase of myocardial ^{123}I -MIBG uptake and reduced ^{123}I -MIBG washout.³¹⁻³⁷

One of the factors that is related to mortality in CHF patients is a wide QRS complex on the electrocardiogram, indicative of ventricular dyssynchrony, which is present in 25-50% of the patients with chronic heart failure.³⁸ Dyssynchronous mechanical activation of the left ventricle increases left ventricular systolic dysfunction and results in additional activation of neurohormonal systems, like elevated plasma B-type natriuretic peptide (BNP), rennin angiotensin aldosterone system and the sympathetic nervous system.

According to the European Society of Cardiology (ESC) guidelines (Dickstein

2008), primary management of chronic heart failure consists of general advice and measures concerning diet, weight, smoking and exercise, and pharmacological therapy. When these measures fail to improve the clinical situation, cardiac resynchronization therapy (CRT) is indicated in a selected patient group. There is an international class I level of evidence A indication for CRT to reduce morbidity and mortality in patients with chronic heart failure and a wide QRS complex ≥ 120 ms (≥ 130 ms if chronic atrial fibrillation is present) that remain symptomatic in NYHA function class III/IV, or a wide QRS complex ≥ 150 ms in class II NYHA, despite optimal pharmacological therapy in combination with a left ventricular ejection fraction (LVEF) $\leq 35\%$ (normal $>50\%$).^{2, 39}

The rationale for CRT is based upon the observation that the presence of ventricular dyssynchrony (a wide QRS complex) can induce systolic dysfunction and thereby worsen heart failure. To correct ventricular dyssynchrony, three pacing leads are implanted via a transvenous approach and connected to the CRT device. One lead is positioned in the right atrial appendage or interatrial septum; a second lead is implanted in the right ventricular apex or septum; the third lead is positioned at the left ventricular free wall via the coronary sinus. This has favorable effects on LVEF, symptoms and plasma BNP.^{40, 41} In addition, it improves functional capacity, reduces all-cause hospitalization and has a beneficial effect on mortality.⁶

Despite remarkable improvement in some CRT patients, there is still a clinical or echocardiographical non-responder rate of up to one third of the patients according to the guidelines. This could partly be due to inadequate selection criteria and/or the inability of the current criteria to encompass the entire pathophysiological set of determinants.

In the search for additional selection criteria to improve the responder rate in CHF patients subjected to CRT, several molecular imaging study parameters have been proposed: Phase analysis of (dys)synchrony in gated myocardial perfusion single photon emission computed

tomography (SPECT).⁴² Infarct burden as measured by myocardial perfusion SPECT.⁴³ Uptake and washout of cardiac MIBG, measures for cardiac sympathetic nervous tone. {Burri, 2008 50 /id;EROL-YILMAZ, 2005 78 /id;Ewe, 2011 84 /id;Merlet, 1993 58 /id;Nishioka, 2011 85 /id} CRT has also a beneficial effect on cardiac sympathetic activity. CRT increases ¹²³I-MIBG uptake and reduces ¹²³I-MIBG washout.^{44, 45}

¹²³I-MIBG as predictor of inducible ventricular arrhythmia

Bax et al. presented a prospective pilot study to examine the relationship between cardiac sympathetic innervation visualized by ¹²³I-MIBG and the inducibility of ventricular arrhythmias during electrophysiological (EP) testing in patients with a previous myocardial infarction. {Bax, 2008 22 /id} The primary objective was to evaluate the predictive value of inducible potentially fatal arrhythmias during EP testing with planar ¹²³I-MIBG imaging and the combination of SPECT ¹²³I-MIBG imaging with ⁹⁹Tc-tetrofosmin perfusion imaging. Patients with a history of myocardial infarction, impaired left ventricular function, referred for EP study because of syncope or non-sustained ventricular tachycardia were included. In a multivariate analysis using ¹²³I-MIBG and ⁹⁹Tc-tetrofosmin SPECT measures, the only variable that could discriminate between patients with inducible ventricular arrhythmias and those without was the 4 hour ¹²³I-MIBG SPECT uptake. A 4 hours ¹²³I-MIBG SPECT defect score ≥ 37 had a sensitivity of 77% and specificity of 75% for predicting EP results. Late H/M ratio per se was not able to stratify arrhythmic risk in this population with ischemic CMP. Nevertheless the extend of denervated myocardium, as calculated by 4 hour ¹²³I-MIBG SPECT, correlated well with inducibility of ventricular arrhythmias during EP testing.

¹²³I-MIBG as predictor of ICD therapy

Prophylactic use of ICD's is recommended by the guidelines in patients with impaired

ventricular function or symptomatic heart failure with a high risk of life-threatening ventricular tachyarrhythmias. A rapid increase in the use of ICD therapy as primary treatment for this condition has been demonstrated.^{49, 50} ICD's as a primary or secondary prevention reduce the relative risk for death by 20%. The MADIT II study, however, showed that the actual reduction of fatal events was 5.6 percentage points (from 19.8 to 14.2).⁵¹ In addition, the SCD-HeFT trial showed that the annual rate of ICD shock was 7.1% and of appropriate shock for rapid ventricular tachycardia or ventricular fibrillation was 5.1%, with a total of 21% patients receiving appropriate shocks over 5 years.⁵ Of all patients receiving an ICD for primary prevention 65% never receive ICD therapy 3 years after implantation.⁵² This percentage is high so more precise identification of responders is important from a clinical and economic point of view. Identifying the patient who most likely will benefit from ICD therapy remains challenging.

Recently, Boogers et al. published a prospective study showing that sympathetic innervation as measured by ¹²³I-MIBG SPECT could predict ventricular arrhythmias causing appropriate ICD therapy and cardiac death in patients with CHF.³⁰ Patients were referred for ICD implantation for primary or secondary prevention. In a multivariable analysis, the only independent predictor for appropriate ICD therapy and cardiac death was the late ¹²³I-MIBG SPECT defect score. Cumulative event rate of appropriate ICD therapy during 3-years follow-up were significantly higher if late ¹²³I-MIBG SPECT defect score was higher than 26.

Recently the first large, multicenter, prospective study: the ADMIRE-HF study has again demonstrated that ¹²³I-MIBG uptake is a prognostic marker in CHF patients treated on guidelines based contemporary therapy.⁵³ In total 961 patients were included with stable CHF, functional class II/III and LVEF < 35% and treated with beta-blocker, ACE-inhibitor or angiotensin receptor blockers and diuretics. A reduced late H/M ratio < 1.6 was an independent predictor of the composite

endpoint of cardiac events as well as for each component of the composite study endpoint: progression of heart failure, potentially lethal arrhythmia and sudden cardiac death (SCD). A late H/M ratio \leq 1.60, reduced LVEF, elevated BNP and NYHA functional class III indicated poor clinical outcomes. Taking these results even further it appears that despite optimal treatment of patients with CHF there seems to be an additional role for ^{123}I -MIBG scintigraphy as a tool for estimating prognosis and for identifying patients who are at risk for potential lethal ventricular arrhythmias who may benefit the most from ICD therapy.

Challenge for the future

The increase use of ICD therapy has an increasing economic impact on the health care budgets in the USA and Europe.^{54, 55} In the USA the costs of CHF treatment are 39.2 billion dollars annually, mainly due to hospitalization and device implantation like CRT and ICD. Since the majority of patients in these patients remains without life-threatening arrhythmias, it is of the utmost importance to find risk stratification tools to identify patients most likely to benefit from ICD leading to higher cost-effectiveness. Yet, there is no single powerful predictor of arrhythmic death and effectiveness of prophylactic ICD use, because arrhythmia, lethal cardiac events and prognosis are multifactorial and have several determinants. However, ^{123}I -MIBG alone and more likely in combination with others determinants may be able to better discriminate CHF patients with appropriate ICD discharge from those patients without any or inappropriate ICD discharge. Therefore, new prospective multicenter studies are needed to study the prognostic value of ^{123}I -MIBG for prediction ICD therapy in the setting of primary prevention.

Conclusion

Patients with CHF are characterized by cardiac sympathetic hyperactivity which is related to sudden cardiac death due to ventricular arrhythmias. ^{123}I -MIBG

scintigraphy can be used to non-invasively measure cardiac sympathetic activity and may be valuable for the selection of patients who mostly benefit from ICD implantation. The exact role of ^{123}I -MIBG for clinical decision making has yet to be established in new and currently ongoing trials.

References

- (1) Levy D, Kenchaiah S, Larson MG et al. Long-Term Trends in the Incidence of and Survival with Heart Failure. *New England Journal of Medicine* 31;347(18):1397-402; 2002 October.
- (2) Dickstein K, Cohen-Solal A, Filippatos G et al. ESC Guidelines for the diagnosis and treatment of acute and chronic heart failure 2008. *European Heart Journal* 1;29(19):2388-442; October 2008.
- (3) Hunt SA. ACC/AHA 2005 Guideline Update for the Diagnosis and Management of Chronic Heart Failure in the Adult: A Report of the American College of Cardiology/American Heart Association Task Force on Practice Guidelines (Writing Committee to Update the 2001 Guidelines for the Evaluation and Management of Heart Failure). *Journal of the American College of Cardiology* 20;46(6):e1-e82; September 2005.
- (4) Swedberg K, Cleland J, Dargie H et al. Guidelines for the diagnosis and treatment of chronic heart failure: executive summary (update 2005). *European Heart Journal*;26(11):1115-40; June 2005.
- (5) Bardy GH, Lee KL, Mark DB et al. Amiodarone or an Implantable Cardioverter-Defibrillator for Congestive Heart Failure. *New England Journal of Medicine* 20;352(3):225-37; January 2005.
- (6) Cleland JGF, Daubert JC, Erdmann E et al. The Effect of Cardiac Resynchronization on Morbidity and Mortality in Heart Failure. *New England Journal of Medicine* 14;352(15):1539-49; April 2005.
- (7) Merlet P, Delforge J, Syrota A et al. Positron emission tomography with ^{11}C

CGP-12177 to assess beta- adrenergic receptor concentration in idiopathic dilated cardiomyopathy. *Circulation* 1;87(4):1169-78; April 1993.

(8) Bristow MR, Ginsburg R, Minobe W et al. Decreased Catecholamine Sensitivity and Beta-Adrenergic-Receptor Density in Failing Human Hearts. *New England Journal of Medicine* 22;307(4):205-11; July 1982.

(9) Choudhury L, Rosen SD, Lefroy DC, Nihoyannopoulos P, Oakley CM, Camici PG. Myocardial beta adrenoceptor density in primary and secondary left ventricular hypertrophy. *European Heart Journal* 1;17(11):1703-9; November 1996.

(10) Spyrou N, Rosen SD, Fath-Ordoubadi F et al. Myocardial beta-adrenoceptor density one month after acute myocardial infarction predicts left ventricular volumes at six months. *Journal of the American College of Cardiology* 2;40(7):1216-24; October 2002.

(11) Podrid PJ FTICR. Role of the sympathetic nervous system in the genesis of ventricular arrhythmia. *Circulation*;2 Suppl:1103-13; 2011.

(12) Flotats A, Carrio I. Cardiac neurotransmission spect imaging. *Journal of Nuclear Cardiology* 1;11(5):587-602; September 2004.

(13) Paul M, Schafers M, Kies P et al. Impact of sympathetic innervation on recurrent life-threatening arrhythmias in the follow-up of patients with idiopathic ventricular fibrillation. *European Journal of Nuclear Medicine and Molecular Imaging* 1;33(8):866-70; August 2006.

(14) Simoes MV, Barthel P, Matsunari I et al. Presence of sympathetically denervated but viable myocardium and its electrophysiologic correlates after early revascularised, acute myocardial infarction. *European Heart Journal* 1;25(7):551-7; April 2004.

(15) Goldstein DS, Eisenhofer G, Dunn BB et al. Positron emission tomographic

imaging of cardiac sympathetic Innervation using 6-[18F]Fluorodopamine: Initial findings in humans. *Journal of the American College of Cardiology*;22(7):1961-71; December 1993.

(16) Luxen A, Perlmutter M, Bida GT et al. Remote, semiautomated production of 6-[18F]fluoro--dopa for human studies with PET. *International Journal of Radiation Applications and Instrumentation Part A Applied Radiation and Isotopes*;41(3):275-81;1990.

(17) Chakraborty PK, Gildersleeve DL, Jewett DM, Toorongian SA, Kilbourn MR, et al. High yield synthesis of high specific activity R(-)-[¹¹C]epinephrine for routine PET studies in humans. *Nucl Med Biol*;20:939-44;1993.

(18) Munch G, Nguyen NTB, Nekolla S et al. Evaluation of Sympathetic Nerve Terminals With [¹¹C]Epinephrine and [¹¹C]Hydroxyephedrine and Positron Emission Tomography. *Circulation* 8;101(5):516-23; February 2000.

(19) Rosenspire KC, Haka MS, Van Dort ME et al. Synthesis and Preliminary Evaluation of Carbon-11-Meta-Hydroxyephedrine: A False Transmitter Agent for Heart Neuronal Imaging. *Journal of Nuclear Medicine* 1;31(8):1328-34; August 1990.

(20) Wieland DM, Brown LE, Les Rogers W et al. Myocardial Imaging with a Radioiodinated Norepinephrine Storage Analog. *Journal of Nuclear Medicine* 1;22(1):22-31; January 1981.

(21) Delforge J, Syrota A, Lancon JP et al. Cardiac Beta-Adrenergic Receptor Density Measured In Vivo Using PET, CGP 12177, and a New Graphical Method. *Journal of Nuclear Medicine* 1;32(4):739-48; April 1991.

(22) Sisson JC, Wieland DM, Sherman P, Mangner TJ, Tobes MC, Jacques S. Metaiodobenzylguanidine as an Index of the Adrenergic Nervous System Integrity and Function. *Journal of Nuclear Medicine* 1;28(10):1620-4; October 1987.

- (23) Wieland DM, Wu JI, Brown LE, Mangner TJ, Swanson DP, Beierwaltes WH. Radiolabeled Adrenergic Neuron-Blocking Agents: Adrenomedullary Imaging with [131I] Iodobenzylguanidine. *Journal of Nuclear Medicine* 1;21(4):349-53; April 1980.
- (24) Kline RC, Swanson DP, Wieland DM et al. Myocardial Imaging in Man with I-123 Meta-Iodobenzylguanidine. *Journal of Nuclear Medicine* 1;22(2):129-32; February 1981.
- (25) Flotats A, Carrio I, Agostini D et al. Proposal for standardization of 123I-metaiodobenzylguanidine (MIBG) cardiac sympathetic imaging by the EANM Cardiovascular Committee and the European Council of Nuclear Cardiology. *European Journal of Nuclear Medicine and Molecular Imaging* 1;37(9):1802-12; August 2010.
- (26) Somsen GA, Hein J, V, Eric F, Alberto R. Normal values and within-subject variability of cardiac I-123 MIBG scintigraphy in healthy individuals: Implications for clinical studies. *Journal of Nuclear Cardiology* 1;11(2):126-33; January 2004.
- (27) Estorch M, Carrio I, Berna L, Lopez-Pousa J, Torres G. Myocardial iodine-labeled metaiodobenzylguanidine 123 uptake relates to age. *Journal of Nuclear Cardiology*;2(2):126-32; March 2003.
- (28) Merlet P, Valette H, Dubois-Rande JL et al. Prognostic Value of Cardiac Metaiodobenzylguanidine Imaging in Patients with Heart Failure. *J Nucl Med* 1;33(4):471-7; April 1992.
- (29) Wakabayashi T, Nakata T, Hashimoto A et al. Assessment of Underlying Etiology and Cardiac Sympathetic Innervation to Identify Patients at High Risk of Cardiac Death. *J Nucl Med* 1;42(12):1757-67; December 2001.
- (30) Boogers MJ, Borleffs CJW, Henneman MM et al. Cardiac Sympathetic Denervation Assessed With 123-Iodine Metaiodobenzylguanidine Imaging Predicts Ventricular Arrhythmias in Implantable Cardioverter-Defibrillator Patients. *Journal of the American College of Cardiology* 15;55(24):2769-77; June 2010.
- (31) de Milliano PAR, Tijssen JGP, van Eck-Smit BLF, Lie KI. Cardiac 123I-MIBG imaging and clinical variables in risk stratification in patients with heart failure treated with beta blockers. *Nuclear Medicine Communications*;23(6):513-519; 2002.
- (32) de Miranda SMR, Mesquita ET, Dohmann HFDR et al. Effects of short-term carvedilol on the cardiac sympathetic activity assessed by ¹²³I-MIBG scintigraphy. *Arquivos Brasileiros de Cardiologia*;94:328-32; 2009.
- (33) Fukuoka S, Hayashida K, Hirose Y et al. Use of iodine-123 metaiodobenzylguanidine myocardial imaging to predict the effectiveness of beta-blocker therapy in patients with dilated cardiomyopathy. *European Journal of Nuclear Medicine and Molecular Imaging* 1;24(5):523-9; May 1997.
- (34) Kasama S, Toyama T, Kumakura H et al. Spironolactone Improves Cardiac Sympathetic Nerve Activity and Symptoms in Patients with Congestive Heart Failure. *Journal of Nuclear Medicine* 1;43(10):1279-85; October 2002.
- (35) Kasama S, Toyama T, Kumakura H et al. Effect of spironolactone on cardiac sympathetic nerve activity and left ventricular remodeling in patients with dilated cardiomyopathy. *Journal of the American College of Cardiology* 19;41(4):574-81; February 2003.
- (36) Kasama S, Toyama T, Kumakura H et al. Effects of perindopril on cardiac sympathetic nerve activity in patients with congestive heart failure: comparison with enalapril. *European Journal of Nuclear Medicine and Molecular Imaging* 16;32(8):964-71; August 2005.
- (37) Somsen GA, van Vlies B., de Milliano PAR et al. Increased myocardial [123I]-metaiodobenzylguanidine uptake after enalapril treatment in patients with chronic heart failure. *Heart*;76(3):218-22;1996.

- (38) Hawkins NM, Petrie MC, MacDonald MR, Hogg KJ, McMurray JJV. Selecting patients for cardiac resynchronization therapy: electrical or mechanical dyssynchrony? *European Heart Journal* 1;27(11):1270-81; June 2006.
- (39) Vardas PE, Auricchio A, Blanc JJ et al. Guidelines for cardiac pacing and cardiac resynchronization therapy. *Europace* 1;9(10):959-98; October 2007.
- (40) Abraham WT, Fisher WG, Smith AL et al. Cardiac Resynchronization in Chronic Heart Failure. *New England Journal of Medicine* 13;346(24):1845-53; June 2002.
- (41) Linde C, Leclercq C, Rex S et al. Long-term benefits of biventricular pacing in congestive heart failure: results from the MUltisite STimulation in cardiomyopathy (MUSTIC) study. *Journal of the American College of Cardiology* 3;40(1):111-8; July 2002.
- (42) Somsen GA, Verberne HJ, Burri H, Ratib O, Righetti A. Ventricular mechanical dyssynchrony and resynchronization therapy in heart failure: a new indication for Fourier analysis of gated blood-pool radionuclide ventriculography. *Nuclear Medicine Communications*;27(2); 2006.
- (43) Adelstein EC, Tanaka H, Soman P et al. Impact of scar burden by single-photon emission computed tomography myocardial perfusion imaging on patient outcomes following cardiac resynchronization therapy. *European Heart Journal* 1;32(1):93-103; January 2011.
- (44) Burri H, Sunthorn H, Somsen A et al. Improvement in cardiac sympathetic nerve activity in responders to resynchronization therapy. *Europace* 1;10(3):374-8; March 2008.
- (45) Erol-Yilmaz AYTE, Verberne HJ, Schrama TA et al. Cardiac Resynchronization Induces Favorable Neurohumoral Changes. *Pacing and Clinical Electrophysiology*;28(4):304-10; 2005.
- (46) Ewe SH, Boogers MJ, Dibbets-Schneider P et al. Prediction of cardiac resynchronization therapy response - value of cardiac 123-iodine meta-iodobenzylguanidine imaging. *Journal of the American College of Cardiology* 5;57(14 Suppl):E693; April 2011.
- (47) Nishioka SAD, Martinelli Filho M, Brandao SCS et al. Cardiac sympathetic activity pre and post resynchronization therapy evaluated by 123I-MIBG myocardial scintigraphy. *Journal of Nuclear Cardiology*;14(6):852-9; November 2011.
- (48) Bax JJ, Kraft O, Buxton AE et al. 123I-MIBG Scintigraphy to Predict Inducibility of Ventricular Arrhythmias on Cardiac Electrophysiology Testing: A Prospective Multicenter Pilot Study. *Circulation: Cardiovascular Imaging* 1;1(2):131-40; September 2008.
- (49) Al-Khatib SM, Sanders GD, Mark DB et al. Implantable cardioverter defibrillators and cardiac resynchronization therapy in patients with left ventricular dysfunction: Randomized trial evidence through 2004. *American Heart Journal*;149(6):1020-34; June 2005.
- (50) Skrabal MZ, Stading JA, Behmer-Miller KA, Hilleman DE. Advances in the Treatment of Congestive Heart Failure: New Approaches for an Old Disease. *Pharmacotherapy* 1;20(7):787-804; July 2000.
- (51) Moss AJ, Zareba W, Hall WJ et al. Prophylactic Implantation of a Defibrillator in Patients with Myocardial Infarction and Reduced Ejection Fraction. *New England Journal of Medicine* 21;346(12):877-83; March 2002.
- (52) Moss AJ, Greenberg H, Case RB et al. Long-Term Clinical Course of Patients After Termination of Ventricular Tachyarrhythmia by an Implanted Defibrillator. *Circulation* 21;110(25):3760-5; December 2004.
- (53) Jacobson AF, Senior R, Cerqueira MD et al. Myocardial Iodine-123 Meta-Iodobenzylguanidine Imaging and Cardiac Events in Heart Failure: Results of the

Prospective ADMIRE-HF (AdreView Myocardial Imaging for Risk Evaluation in Heart Failure) Study. *Journal of the American College of Cardiology* 18;55(20):2212-21; May 2010.

(54) Gehi AK, Stein RH, Metz LD, Gomes JA. Microvolt T-Wave Alternans for the Risk Stratification of Ventricular

Tachyarrhythmic Events: A Meta-Analysis. *Journal of the American College of Cardiology* 5;46(1):75-82; July 2005.

(55) Sanders GD, Hlatky MA, Owens DK. Cost-Effectiveness of Implantable Cardioverter-Defibrillators. *New England Journal of Medicine* 6;353(14):1471-80; October 2005.