

Crustacean Infestations in Some Cultured Marine Fishes in Relation to Economical Impact.

Eissa I .M, Derwa H .I. M., Maather El-Lamie M.M and Dawlat Hassanin A*

Dept. of Fish Diseases and Management, Fac. of Vet Med., Suez Canal Univ.

* Veterinary Quarantine in Port Said.

Abstract:

This study was conducted on 525 marine fishes represented as 175 of each seabass *Dicentrarchus labrax*, Mullet sp (*Mugil cephalus* and *Moolgarda seheli*). The clinical examination of the infested fishes showed respiratory distress, surface swimming, bulging of opercula, sluggish movement, emaciation, severe erosion and hemorrhages of gills. Hemorrhagic areas were found on gill cover and in late stages, as well as external ulcers located in the gill filaments. *Caligus* and *Lernanthropus* species were isolated and identified from all the examined fish species. The total prevalence of the examined fish species was 55.05%. The prevalence of crustaceans in *D.labrax*, *M.cephalus* and *M.seheli* were 48.57, 78.28 and 38.29% respectively. The infested fishes with such crustaceans led to loss of body weight consequently, high economic losses at marketing in marine farms.

This problem was recorded and discussed.

Key words: Cultured marine fish, crustacean infestations and economic losses.

Introduction:

Fish become the hope for overcoming protein shortage problem all over the world. Aquaculture is necessary to increase fish production (Eissa et al., 2010). The gradual increase of fish production resulted in serious pathological problems in all countries including Egypt where intensive aquaculture is practiced. Parasitic infestations represent the majority of the known infectious diseases affecting fish, they cause mortality, deformity, weight loss and different clinical abnormalities

among the affected fish (Eissa, 2002). In recent years, crustacean parasitic diseases are becoming more frequent in marine aquaculture and they are associated with high morbidity and mortality causing substantial economic losses. (Tansel and Fatih, 2012).

The present study was planned to investigate the parasitic crustaceans among some cultured marine fishes seabass *Dicentrarchus labrax* and Mullet species *Mugi lcephalus* and *Moolgarda seheli* in relation to economic impact.

Materials & Methods:**Fishes:**

A total number of 525 alive marine fishes were represented as 175 of each *Dicentrarchus labrax*, *Mugil cephalus* and *Moolgarda seheli* of different body weights were randomly collected and seasonally from some private fish farms at Deba triangle in Port Said, Damietta Way.

Aquaria:

Fully prepared glass aquaria (100 x 50 x 50 cm.) were used for holding fishes. The aquaria were supplied with water from the farm; continuous aeration was maintained in each aquarium using an air pump (Elmassy, Model EM-148). Thermostatic heaters (Type CMI, Germany) were used along the course of the study in winter, early spring and late autumn to maintain the temperature at $23 \pm 1^\circ\text{C}$, while in late spring, summer and early autumn the temperature was the room temperature (22 to 32°C).

Clinical examination:

Clinical examination was done on live fishes and / or freshly dead ones. They were grossly examined to determine any clinical abnormalities or presence of crustacean parasites. Also, the postmortem examination was performed on all fishes according to *Lucky (1977)*.

Parasitological examination:

The collected crustaceans from gills, skin and buccal cavity were washed with distilled water, preserved in equal amount of

70% alcohol-5% glycerine in test tubes. Permanent mounts were prepared by passage of the parasite in descending grades of glycerine alcohol (70, 50 and 30%), cleared in glycerine and mounted in glycerine gelatin according to *Lucky (1977)* then examined microscopically. They were identified according to *Badawy (1994)*.

Detection of economic impact:

Data used for detection of economic impact were obtained from the available records of such farms, as well as the research questionnaire designed for those that do not keep records according to *El-Telbany and Atallah, (2000)*. The economic impact was recorded at season of marketing on 100 fish from each species. The economic analysis was done for the total costs and for the total returns. These parameters were calculated per Kilogram (Kg) bodyweight to overcome variations in the numbers of fish used as the following:

1. Total fish yield:

Total fish yield = Mean fish weight at marketing X number of fish.

2. Total return:

Total return (LE) = Price of kg X Total yield.

3. Total Loss:

Total Loss (LE) = Total return (LE) in non-infested fish - Total return (LE) in infested fish

3. Results**Clinical picture:**

The infested fishes from the 3 examined species showed rubbing

the body against sides in the farms and flashing with trying to gulp atmospheric air. In *M.cephalus* and *Moolgarda seheli*, the main clinical signs were the aggregation in groups at the water inlet with severe respiratory distress. They moved rapidly in circles, with sluggish movement. Some infested fishes were suffering from emaciation, bulging of operculi and jumping out of water, this especially in *M.cephalus*. Infested *Dicentrarchus.labrax* showed haemorrhagic areas on gill cover and abdomen, ulcers on the back and bases of fins with the crustacea

attached to gill cover of *M.cephalus*, mouth cavity of *Dicentrarchus labrax* and body surface of *M.seheli*.(Plate 1)

Results of parasitological examination:

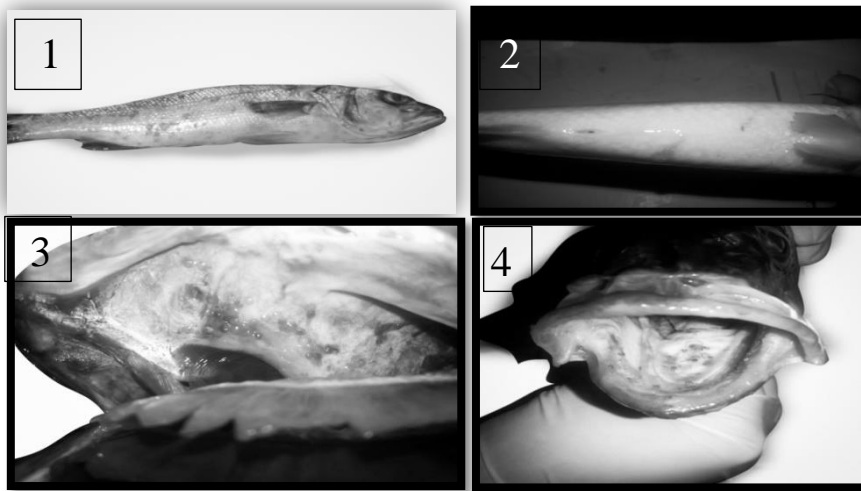
The detected crustaceans were:

*1- Caligus*sp:

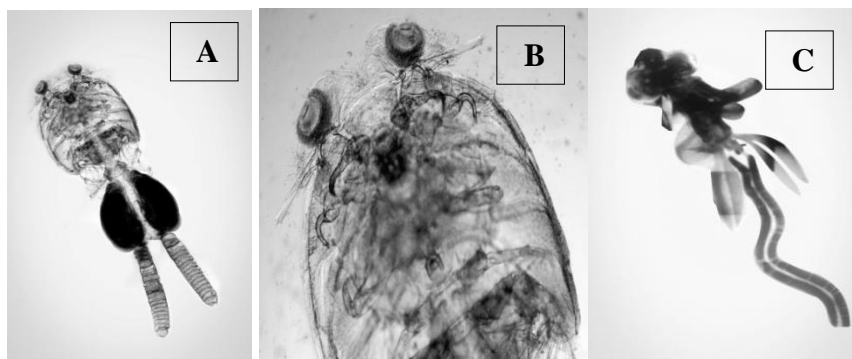
It was isolated from body surface, gill cover and attached to mouth cavity of infested *D.labrax*, *M.cephalus* and *Moolgardaseheli* .

2-Lernanthropus Spp:

They were collected from gills of *D.labrax*, *M.cephalus* and *Moolgardaseheli*.Plate (2).



Plate(1) :A. Infested *D.labrax* showing hemorrhagic areas on gill cover and abdomen ,B. Showing *caligus*spp attached to body surface of *Moolgardaseheli*.C. Showing attached *caligus*spp to gill cover of *M.cephalus*, D. Showing heavy infestation of *caligus*spp attached to mouth cavity of *D.labrax*.



Plate(2) : **A.** Showing female caligus sp.(Whole copepod), **B.** Anterior end showing first & second maxilla and claws.**C.**Female Lernanthropus sp.(whole copepod).

Table (1):Total prevalence of crustacean infestations in the different examined fish species:

Fish species	No of examined fish	No. of infested fish	%
<i>D.labrax</i>	175	85	48.57
<i>M.cephalus</i>	175	137	78.29
<i>M.seheli</i>	175	67	38.29
Total	525	289	55.05

Table (2): Seasonal prevalence among different examined fishes:

Season	Autumn	Winter	Spring	Summer	Total
<i>D.labrax</i>	4(16%) n=25	7(28%) n=25	10(40%) n=25	64(64%) n=100	85(48.57%) n=175
<i>M.cephalus</i>	22(88%) n=25	11(44%) n=25	12(48%) n=25	92(92%) n=100	137(78.28%) n=175
<i>M.seheli</i>	40(40%) n=100	3(12%) n=25	10(40%) n=25	14(56%) n=25	67(38.28%) n=175
Total	66(44%)	21(28%)	32(42.67%)	170(75.56%)	289(55.05%)

n=No. of examined fish in each season

Table (3): Economic impact in relation to crustacean infestations in different examined fish Species

Fish species	<i>D.labrax</i>	<i>M.cephalus</i>	<i>M.seheli</i>
Average costs of 1 Kg	45 LE	20 LE	15 LE
Average marketing price / Kg	65 LE	25 LE	50 LE
Marketing weight/fish(non infested)	900g	600g	100g
Weight of infested fish	a.light infested fish(750-850g) b.heavy infested fish (550-650g)	a.light infested fish(450-550g) b.heavy infested fish (350-450g)	a.light infested fish(50-100g) b.heavy infested fish (<50g)
Total number of fish per feddan at marketing	15000	17500	6000
Production per feddan	a.non infested fish =13.500 tons b. infested fish=12.180 tons	a.non infested fish=10.500 tons b. infested fish=8.540 tons	a.non infested fish=600 Kg b. infested fish=528 Kg
Total losses/Tons	1.320Tons	1.960Tons	72Kg
Total losses/LE	85.800LE	49.000LE	3.600LE

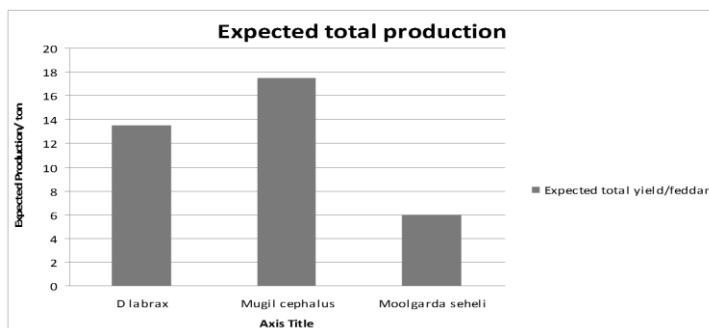


Fig (1).Expected total production in the examined fishes.

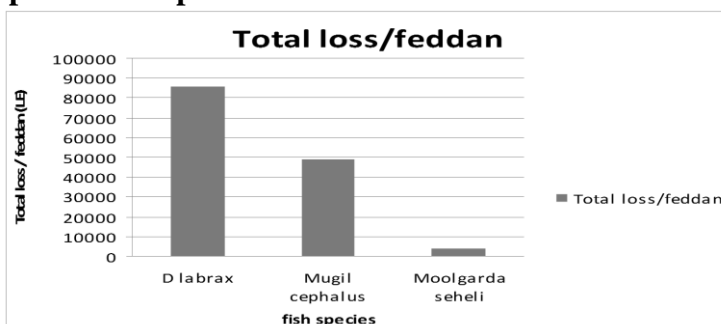


Fig (2). Total loss/ feddan in the examined fishes..

4. Discussion:

The main clinical signs observed in the infested fishes with parasitic crustaceans were manifested as rubbing the body against hard objects and sides of aquaria to get rid the irritation induced by the parasites. Opercula were bulging. Fish gathered at water surface with gulping the atmospheric air. These results are in agreement with those reported by *Ragiaset al. (2004)* and *Eissa et al. (2012)*.

In *Mugil cephalus* and *Moolgarda seheli* the main clinical signs were the aggregation in groups at the water inlet with severe respiratory distress and swam rapidly in circles. These signs may be attributed to massive mucous secretions due to the irritation from contact of crustacean parasites and with their egg strings on the gill filaments which leads to gill damage. Such results were nearly similar to that found by *Eissa (2004)*, and *Lester and Hayward (2006)*.

Based on the morphological and parasitological examinations, the isolated crustaceans were belonged to *Caligus* and *Lernanthropus* sp.

Lernanthropus sp was isolated from gills of *D. labrax*, *M. cephalus* and *M. seheli*. This result coincides with the findings of *Tosken et al. (2008)* and *Eissa et al. (2012)* who isolated the same genus from the same site in *D. labrax*.

Caligus sp isolated from gills, oral cavity and skin of *D. labrax*, *M. cephalus* and *M. seheli*. This

result is agreement with *Maran et al. (2009)* and *Eissa et al. (2012)* that isolated the same genus from gill cavities and body surface of *M. labrax*.

In this work, the total prevalence of parasitic infestation in the examined fish species was 55.05%. These results are lower than met by *Maather El-Lamie (2007)* and *Eissa et al. (2012)* who reported the prevalence of parasitic infestation as 70% among three marine fish species (*Scomberomorus commerson*, *Morone labrax* and *Siganus revulatus*). This variation in prevalence may be due to the differences of the examined hosts and difference in the locality from which fish samples were obtained as well as time difference.

Concerning seasonal variation of the parasitic infestation, it was clear that the peak was the highest in summer 75.56%, followed by autumn 44% then Spring 42.67% and winter 28%. This sequence nearly agreed with *Noor El-Deen et al. (2013)* who recorded the highest infestations were during summer and spring and decreased in winter and autumn.

When *D. labrax*, *M. cephalus* and *Moolgarda seheli* reached to harvesting weight, the results indicated that the infested fishes showed decrease in body weight in comparison with the non-infested ones. So, there was an economic loss. In *D. labrax*, the total fish yield of non-infested fish per feddan was 13.500 tons, but total fish yield of

infested fish per feddan was 12.180 tons, so the total losses were 1.320 tons. In *M.cephalus*, the total fish yield of non-infested fish per feddan was 10.500 tons but total fish yield of infested fish per feddan was 8.540 tons so the total losses were 1.960 tons. In *M.seheli*, the total fish yield of non-infested fish per feddan was 600Kg but total fish yield of infested fish per feddan was 528Kg, so the total losses were 72Kg. These results agreed with those of *Faruket al. (2004)* and *Thorarinsson and Powel (2006)* who reported that market price and harvest weight greatly affect the economics of fish production and farm profitability. Thus, farmers are subjected to substantial economic losses as a result of crustacean fish diseases.

References:

Badawy G.A. (1994): Some studies on ectoparasites infecting marine fish in Egypt. Ph. D Thesis, Parasitology Dept. Facu. of Vet. Medicine, Zagazig Univ.

Eissa I. A. M. (2002): Parasitic fish disease in Egypt. Dar El Nada El Arabia publishing, 32 Abd El-Khalik Thirwatst. Cairo, Egypt ,(2): 89.

Eissa I.A.M., Gado M.S. , Laila A.M., and Noor El-Deen A.E. (2010): Field studies on the prevailing external parasitic diseases in natural male and monosex tilapia in Kafr El-Sheikh governorate fish farms. Proc. 5th

Inter Conf. Vet. Res. Div., NRC, Cairo, Egypt, 185-192.

Eissa I. A. M., Maather El-Lamie. M. M. and Mona Zakai (2012): Studies on Crustacean Diseases of Seabass, *Moronelabrax*, in Suez Canal, Ismailia Governorate. Life Science J ,9(3): 515.

El-Telbany M. M. and Atallah S. T. (2000): Some cultured factors affecting the productive and economic efficiency of *MugilCapito* nursing in earthen pond system. 9th. Scientific Cingrees. Fac. of Vet. Med. Assiut Univ.

Faruk M.A.R, Saker M.M.R, Alam M.J and Kabir M.B. (2004): Economic Loss From Disease Rural Fresh water Aquaculture of Bangladesh. Pakistan J of Biological Science ,7(12):2086 - 2091.

Lester R.J.G. and Hayward C.J. (2006): Phylum Arthropoda, pp 466-565. In P.T.K., Woo.(ed.). Fish Diseases and Disorders Vol 1: Protozoan and Metazoan Infections. 2nd Ed. CAB Int, London.

Lucky Z. (1977): Methods for the diagnosis of fish diseases. American Publishing Co., Pvt. Ltd., New Delhi, Bombay Calcutta and New York.

Maather El-Lamie M. M. (2007): Studies on the parasitic diseases in some marine fishes. Ph. D. Thesis, Fac. of Vet. Med., Dept. of Fish Diseases and Management, Suez Canal University.

Maran B.A, Venmathi, Seng L.T., Ohtsuka S. and Nagasawa K.

- (2009): Records of caligus(crustacean: Copepoda: Caligidae) from marine fishes cultured in floating cages in Malaysia withredescription of the male of *Caliguslongipedis* Bassett-Smith, 1898. Zoological Studies, 48 (6):797-807.
- Noor El-Deen A.E, Abeer, Mahmoud and Azza,H.M(2013) : Field Studies of Caligus parasitic Infections among cultured Seabass (*Dicentrarchuslabrax*) and Mullet (*Mugilcephalus*)in Marine Fish farmswith Emphasis on Treatment Trials .Global Veterinaria ,11 (5): 511-520.
- Ragias V., Tonis D. and Athanassopoulou F. (2004): Incidence of an intense*Caligusminimus* Otto 1821, *C. pageti*Russel, 1925, *C. mugilis* Brian, 1935 and *C. apodus* Brian, 1924 infection in lagoon cultured sea bass (*Dicentrarchuslabrax* L.) in Greece. Aquaculture, (242): 727-733.
- TanselT. and Fatih P. (2012):Ectoparasitic sea lice,*Caligusminimus*(Otto 1821, Copepoda: Caligida on Brawn wrasse, *Labrusmerula*L., in Izmir Baye)Aegean Sea. Journal of Animal Science, 11(38): 208.
- Thorarinsson R andPowell D.B. (2006): Effects of disease risk, vaccine efficacy, and market price on the economics of fish vaccination.Aquaculture ,(256) :42–49.
- Toksen E, Nemli E, and Degirmenci U. (2008): The Morphology of *Lernanthropuskroyeri* vanBeneden, 1851(Copepoda:Lernanthropidae) Parasitic on Sea Bass, *Dicentrarchuslabrax* (L.,1758), from the Aegean Sea, Turkey, ActaParasitologicaTurcica, 32 (4), 386-389.

الملخص العربي

أجريت هذه الدراسة على 175 من أسماك القاروص و 175 من أسماك البورى و175 من أسماك السهيلي وقد أسفر الفحص الإكلينيكي أن الأسماك المصابة بالقشريات الطفيلية كانت تعاني من ضيق في التنفس وكانت تعوم قرب سطح المياه كما أظهرت تضخما للغطاء الخيشومي وهزال وكذلك ظهور تقرحات خارجيه على جسم السمكه وايضا الشعيرات الخيشومية. وبعد فحص الأسماك أظهرت إصابتها بالكاليجس والليرنانثروبس . وكانت نسبة الإصابة الكلية 55.05% وكانت نسبة الإصابة في اسماك القاروص 48.57% ونسبة الإصابة في أسماك البورى 78.28% ونسبة الإصابة في أسماك السهيلي 38.29%. وكانت الإصابة في فصل الصيف هي الأعلى بنسبه 75.56% ويليها الخريف 44% ويليها الربيع 42.67% وأقلهم نسبه هي الشتاء 28%.

وكذلك أظهرت الدراسة ان زيادة الوزن السمكه تزيد نسبة الإصابة بالطفيليات القشريه وكذلك السمك الإناث ظهرت به نسب إصابه أعلى من الذكور. وايضا كلما زاد طول السمكه يزداد مساحة سطح السمك وبالتالي تكون اكثر عرضه للإصابه بالطفيليات القشريه .

إن إصابة الأسماك بالطفيليات القشريه تؤدي الى إنقاص وزن الأسماك وبالتالي تؤثر اقتصاديا على مزارع الأسماك البحرية.