

Online ISSN: 2682-2628  
Print ISSN: 2682-261X

# IJC CBR

INTERNATIONAL JOURNAL OF  
CANCER AND BIOMEDICAL RESEARCH

<https://jcbr.journals.ekb.eg>

Editor-in-chief

Prof. Mohamed Labib Salem, PhD

**The association of adiponectin polymorphism  
(rs2241766) with susceptibility and prognosis  
of Egyptian patients with haematological  
malignancies: A case-control study**

Hewida H. Fadel, Nahla E. Hefny, Amany I. Yousef, Nadia A.  
Sadek, Eman Attea and Tarek El-Sewedy



PUBLISHED BY

**EACR** EGYPTIAN ASSOCIATION  
FOR CANCER RESEARCH

Since 2014

**International Journal of Cancer & Biomedical Research  
(IJCBR) <https://jcbr.journals.ekb.eg>**

IJCBR is an Int. journal published by the Egyptian Society of Cancer Research (EACR, established in 2014, <http://eacr.tanta.edu.eg>) and sponsored by the Egyptian Knowledge Bank (EKB: [www.ekb.eg](http://www.ekb.eg)).

IJCBR has been approved by the Supreme Council of Universities, Egypt with score 7 (<http://egjournal.scu.eg>). The journal is cited by google scholar and registered by Publons (<https://publons.com>). The journal has recently been evaluated in 2020 by Nature Springer with a good standing.

**Scope of IJCBR**

- Drug discovery from natural and synthetic resources
- BioMedical applications of nanotechnology
- Sem cell biology and its application
- Basic and applied biotechnology
- Inflammation and autoimmune diseases
- In silico models and bioinformatics
- In vitro and In vivo preclinical animal models
- Cellular and molecular cancer biology
- Cancer Immunology and Immunotherapy
- New methods for prediction, early detection, diagnosis prognosis and treatment of diseases.
- Immunology in health and diseases
- Anti-microbial defense mechanisms
- Cellular and molecular physiology and pathology of diseases

**IJCBR Editor,**  
**Prof. Mohamed Labib Salem, PhD**  
Professor of Immunology  
Faculty of Science, Tanta University, Egypt

## The association of adiponectin polymorphism (rs2241766) with susceptibility and prognosis of Egyptian patients with haematological malignancies: A case-control study

Hewida H. Fadel<sup>1</sup>, Nahla E. Hefny<sup>1</sup>, Amany I. Yousef<sup>2</sup>, Nadia A. Sadek<sup>3</sup>, Eman Attea<sup>4</sup> and Tarek El-Sewedy<sup>2</sup>

<sup>1</sup>Department of Medical Laboratory Technology, Faculty of Allied Medical Science, Pharos University, Alexandria, Egypt

<sup>2</sup>Department of Applied Medical Chemistry, Medical Research Institute, Alexandria University, Egypt

<sup>3</sup>Department of Haematology, Medical Research Institute, Alexandria University, Egypt

<sup>4</sup>Department of Haematology, Faculty of Medicine, Alexandria University, Egypt

### ABSTRACT

**Background:** Haematological malignancies are ranked as the highest in incidence. Adiponectin (ADIPOQ), the most abundant circulating adipocytokine, plays a major role in the regulation of insulin sensitivity, metabolism, and hematopoiesis. Various ADIPOQ gene polymorphisms are associated with an increased risk of different cancers. However, to the best of our knowledge, the association between ADIPOQ T45G (rs2241766) single nucleotide polymorphism (SNP) and leukemia is unknown. **Aim:** This study aimed to investigate the association between ADIPOQ (rs2241766) and the clinicopathological status of Egyptian leukemia patients. **Materials and Methods:** A case-control design was used, including 80 leukemia patients and 70 healthy controls. Polymerase chain reaction-restriction fragment length polymorphism (PCR-RFLP) was used for genotyping. Survival analysis and biochemical investigations including hematological and lipid profiles, liver and kidney functions in addition to anthropometric measurements were also determined. **Results:** A significant positive correlation between ADIPOQ gene T45G (rs2241766) SNP and leukemia incidence was detected. The G allele was more frequent in leukemia patients compared to the T allele. Kaplan-Meier analysis revealed that the SNP rs2241766 was associated with the patient's event-free survival but not the overall survival. In addition, G carriers, hyperglycemia, and hyperuricemia patients had a significantly shorter median EFS compared with T carriers, normoglycaemia, and normoglycemia patients. **Conclusion:** The current study shows an association between the SNP (rs2241766) and leukemia incidence and prognosis in Egyptian patients. Furthermore, an association between the rs2241766 and high prevalence of hyperglycemia and dyslipidemia in the G allele carrier's leukemia patients was also evident.

**Keywords:** Adiponectin, Polymorphism; rs2241766; Leukemia; Prognosis

Editor-in-Chief: Prof. M.L. Salem, PhD - Article DOI: 10.21608/IJCBR.2020.25954.1014

### ARTICLE INFO

#### Article history

Received: March 15, 2020

Revised: April 11, 2020

Accepted: April 13, 2020

#### Correspondence to:

Dr. Hewida Fadel  
Department of Medical  
Laboratory Technology,  
Faculty of Allied Medical  
Science, Pharos University,  
Alexandria, Egypt.  
Email:  
hewida.fadel@pua.edu.eg

### INTRODUCTION

According to the Globocan 2018 worldwide cancer statistics, leukemia was ranked as the 1<sup>st</sup> and 4<sup>th</sup> most prevalent cancer in individuals with the ages of 0-29 and 0-49, respectively. It causes the highest mortality rate up to the age

of 44 with the highest incidence rates registered in industrialized followed by developing countries (Bray *et al.*, 2018). There are differences in incidence, risk factors, response to treatment, and overall survival (OS) of patients in different countries. In Egypt, recent

studies indicated that almost half of Egyptian children suffering from cancer were diagnosed with leukemia (Elmetwaly *et al.*, 2019; Khaled *et al.*, 2019, Safinaz *et al.*, 2019).

Adiponectin is a *multifunctional* 244 amino-acid protein, the most abundant circulating adipocytokine that is encoded by the *ADIPOQ* gene located on human chromosome 3q27 (Vionnet *et al.*, 2000). Adiponectin plays a major role in the regulation of insulin sensitivity, lipid metabolism, and hematopoiesis. *It is* synthesized by many tissues but mainly the white adipose tissue. It reduces the hepatic glucose production, increases the utilization of glucose and fatty acids by skeletal muscles, lowers blood glucose levels, and exerts its anti-diabetic action via protecting  $\beta$ -cell and regulating the pathogenesis of the metabolic syndrome. Also, it has anti-inflammatory, anti-atherosclerotic and apoptotic effects besides a possible role in the regulation of blood cell proliferation (Barbe *et al.*, 2019; Pasha *et al.*, 2019). Various single nucleotide polymorphisms in *ADIPOQ* gene was suggested to be associated with alterations of adiponectin levels and genetic susceptibility and progression of different types of diseases such as diabetes (Karimi *et al.*, 2018), hypertension (Jhuo *et al.*, 2019), as well as many solid tumors including breast (Geriki *et al.*, 2019), pancreatic (Mohamed *et al.*, 2019), and lung cancer (Li *et al.*, 2015). A meta-analysis suggested that serum *ADIPOQ* levels may be inversely correlated with leukemia (Ma *et al.* 2016). Moreover, a significant decrease in adiponectin levels was observed in relapsed acute and lymphoblastic leukemia patients (El-Baz *et al.*, 2013).

Understanding the intersections between metabolism and cancer genetics remains an open challenge. So that studying *ADIPOQ* SNP and its potential consequences on the metabolism of glucose, lipids, and proteins in hematopoietic *malignancies* and correlating the role of both genetic and metabolic alterations with the response to therapy may add benefits in limiting the relapse. Therefore, *the current study aimed to investigate the association between ADIPOQ T45G (rs2241766) SNP with the risk (OS) and*

event-free survival (EFS) and clinicopathological status of Egyptian leukemia patients.

## 2. SUBJECTS AND METHODS

### 2.1. Subjects and sampling:

A total of 150 subjects were enrolled for this study (80 newly diagnosed leukemia patients and 70 healthy controls). Patients were admitted to the Hematology unit at the medical research institute and Faculty of Medicine Hospital, Alexandria University. All subjects signed a written informed consent before participation and the study was approved by the ethics committee of the Medical Research Institute (code: IORG 0008812). The patients' follow-up continued for two years after treatment, starting from 1 Jan. 2017 to 30 Dec. 2018. The study included any confirmed newly diagnosed leukemia Egyptian patients within this period and excluded any patient who received treatments before the study or having another type of cancer. Among the leukemia patients, 46 were males and 34 were females while the control group had 53 males and 17 females. A total of 5mL peripheral venous blood was collected from each participant at presentation and after the first cycle of chemotherapy (for patients) and divided into two parts: 2mL were allowed to clot and serum was isolated and stored at  $-20^{\circ}\text{C}$  until assayed for biochemical investigations. The other 3mL of blood was collected into EDTA-containing plexiglass tube and was used for genotyping analysis.

### 2.2. Treatment regimens:

Thirty-one patients diagnosed with acute lymphoblastic leukemia. (ALL) were treated with Hyper-CVAD, which consists of two courses: (A) Cyclophosphamide, vincristine, doxorubicin and dexamethasone, and (B) Methotrexate, leucovorin, and cytarabine were given in an alternating fashion (Garcia-Manero and Kantarjian 2000). Twenty-eight acute myeloid leukemia (AML) patients were treated with different protocols including 3+7 protocol (Daunorubicin for 3 days followed by Cytosar for 7 days) (Yates *et al.*, 1982) or Larson protocol (cyclophosphamide-daunorubicin-vincristine-prednisone-L-asparaginase) (Larson *et al.*, 1995) or Linker protocol (Daunorubicin-Vincristine-Prednisone-

Asparaginase) (Linker *et al.*, 1991). Seventeen chronic myeloid leukemia (CML) patients were mainly treated with Imatinib or Nilotinib and four patients with chronic lymphoblastic leukemia (CLL) were treated with FCR protocol (Fludarabine, Cyclophosphamide, and Rituximab) (Rossi *et al.*, 2015). A representation of the treatment protocols used and patient response is summarized in (Figure 1).

### 2.3. Anthropometric and Biochemical Studies

Body mass index (BMI) was calculated by dividing weight in kilograms by height in meters squared. Biochemical investigations included: (1) fasting blood glucose samples were collected after 8 hours fasting and measured using the glucose oxidase method; (2) lipid profile including total cholesterol (TC), high-density lipoproteins (HDL) and triglycerides (TrG) were measured by an enzymatic assay using an autoanalyzer (Hitachi, Tokyo, Japan); (3) low-density lipoproteins (LDL) cholesterol was calculated by the Friedewald's equation; (4) liver function tests (alanine aminotransferase (ALT), aspartate aminotransferase (AST), bilirubin and albumin, kidney function tests (urea and creatinine) and uric acid (UA) were determined by standard laboratory procedures (Burtis *et al.*, 2007).

### 2.4. Genotyping and PCR-RFLP analysis

Genomic DNA extraction was carried out by the QIAamp DNA mini kit (cat # 51104, Qiagen Hilden, Germany) according to the manufacturer's recommendations. DNA concentration was measured using NanoDrop™ 2000c spectrophotometer (Thermo Scientific, USA). The PCR was performed using Taq PCR Master Mix Kit (Cat # 201443) (Qiagen, Applied Biosystems). The PCR thermal protocol was: initial denaturation at 95°C for 3 min followed by 35 cycles of denaturation at 94°C for 35 Sec, 60°C for 40 sec, 72°C for 45 sec and a final extension at 72°C for 7 min (Takahashi *et al.*, 2000). The used ADIPOQ primers were as follows: forward 5'-GAAGTAGACTCTGCTGAGATGG-3' and reverse 5'-TATCAGTGTAGGAGGTCTGTGATG-3' (Takhshid *et al.*, 2015). The amplified PCR products (10 – 12 µL) were directly digested with 0.5 µL of *Sma*I (10U/µL) restriction enzyme (Cat: ER#0665) (Thermo-Fischer Scientific, USA) at 30°C for 5 hours and then analyzed by

electrophoresis on a 2% agarose gel stained with ethidium bromide for band molecular weight determination and restriction fragment analysis as described previously (Hu *et al.*, 2013).

### 2.5. Statistical analysis

The analysis was done using the statistical package for social sciences (SPSS/version 21.0) software. Hardy-Weinberg equilibrium of genotype frequencies distribution was used for comparing cases against the controls. The differences in frequencies of individual polymorphisms were assessed by frequent analysis, Fisher's exact tests, and Chi-square tests. Kaplan-Meier curves were utilized to test associations of the SNP with survival time. OS was estimated from the date of diagnosis to the date of death while the endpoint of EFS was estimated at the time of relapse, resistance, or death.

## 3. RESULTS

### 3.1. Demographic analysis

There was no significant difference regarding the age or gender of both groups ( $p = 0.153$  and  $0.151$  respectively). The mean BMI was significantly lower ( $p = 0.0003$ ) in patients ( $26.83 \pm 3.16$ ) compared to the controls ( $29.56 \pm 2.81$ ) (Table 1).

### 3.2. Biochemical Investigations

Fasting blood sugar (FBS) was significantly higher in leukemia patients compared to the controls. Lipid profile showed a significant increase ( $p = 0.024$ ) in TrG levels in patients compared to the controls and a significant decrease in HDL-C, TC/HDL ratio, and LDL/HDL ratio in patients compared to controls ( $p = 0.001$ ,  $0.001$  and  $0.002$ ), respectively. A significant decrease in hemoglobin level and platelet count was detected in leukemia patients compared to the controls while the white blood cells and blast cell counts were significantly higher. On the other hand, there was no significant difference in any of the kidney or liver function tested parameters between patients and controls except for uric acid and albumin (Table 1).

**Table 1:** Demographic, clinical and biochemical characteristics of patients and controls.

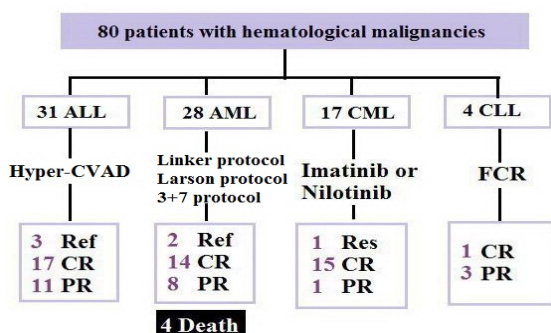
characteristic	Patients	Control	P
Gender			

Male (%)	46 (57.5)	53(75)	X <sup>2</sup> =
Female (%)	34 (42.5)	17 (25)	0.151
Age (years)	37.6±15.1	33.9±13.9	0.153
BMI (Kg/m <sup>2</sup> )	26.8±3.16	29.5±5.3	0.0003
Hb (mg/dl)	9.13±7.7	12.16±2.4	0.002*
WBCs(x1000 cells/)	20.18±23.6	5.3±2.48	0.0001
Platelets(x1000/cells)	127.93±120	270±89.4	0.0001
Blast Cells %	40.62±30.3	2.00±1.00	0.0001
FBS (mg/dl)	105.2±25.0	87.57±13.	0.0001
Urea (mg/dl)	26.58±10.8	4.04±1	0.0001
ALT (U/L)	33.81±26.2	21.82±6.2	0.0003
AST (U/L)	28.02±14.6	20.85±6.1	0.0002
Total Bilirubin	0.69±0.5	0.55±0.3	0.047*
Albumin (g/dl)	3.1±0.5	4.04±1	0.0001
Creatinine (mg/dl)	3.1±0.5	4.04±1	0.062
Uric acid (mg/dl)	3.65±1.45	2.13±0.58	0.0001
TC (mg/dl)	119.75 36.1	122.91	0.554
TrG (mg/dl)	123.19±78.	85.98±25.	0.0002
HDL (mg/dl)	30.70±12.0	47.39±13.	0.0001
LDL (mg/dl)	62.94 29.9	61.87 20.4	0.84
TC/HDL	4.26±1.5	2.69±0.5	0.0001
LDL/HDL	2.22±1.09	1.4±0.6	0.0001

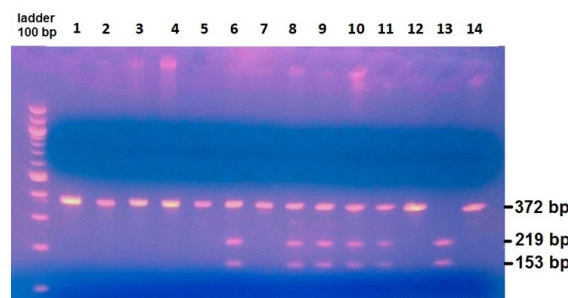
Data are given as mean ± SD. \* Statistically significant at (P < 0.05) compared to control. BMI, Body mass index. Hb, Hemoglobin. WBCs, white blood cells. FBS, Fasting blood sugar. ALT, alanine transaminase. AST, aspartate transaminase. TC, total cholesterol. TrG, Triglycerides. HDL, high-density lipoproteins. LDL, low-density lipoproteins.

### 3.3. Genotype and allele frequencies analysis

Following PCR-RFLP and the *SmaI* enzyme digestion, the ADIPOQ wild-type TT homozygous yielded a single 372 bp uncut fragment while the heterozygous TG mutant resulted in a digestion profile of 372, 219 and 153bp fragments. Finally, the homozygous G/G alleles resulted in a digestion profile of 219 and 153bp fragments (Figure 2).



**Figure 1.** Flow chart representing recruited Leukemia patient's subtypes, treatment protocols and patient response. FCR (fludarabine, cyclophosphamide, rituximab), Ref: refractory, CR: complete remission, PR: partial remission, Res: resistance.



**Figure 2.** Representative agarose gel electrophoresis showing the PCR-RFLP analysis for ADIPOQ T45G (rs2241766) SNP with the 3 genotypes detected; Lanes 1-5, 7, 12 and 14: wild-type (TT); Lanes 6, 8-11: heterozygous (TG); Lane 13: homozygous (GG). A 100 bp ladder is used as a DNA molecular weight marker.

Genotype and allele frequency distribution data are shown in (Table 2); the mutated variants TG, GG of ADIPOQ (rs2241766) were significantly higher in leukemia patients compared to controls (p=0.001). The homozygous wild type TT was the most frequent in patients and controls with 45 (56.2%) and 63 (90%) respectively. Interestingly, the mutant heterozygous TG variant was found in 34 (42.5%) of patients compared to only 5 (7.1 %) of the controls. Finally, the mutant homozygous variant GG was the least frequent in both groups, found in only 1 patient (1.2%) and 2 controls (2.9%).

**Table 2:** Genotype and allele frequencies of ADIPOQ (rs2241766) polymorphism among patients and controls.

ADIPOQ T45G (rs2241766)	Patients n=80 (%)	Control n=70 (%)
<b>Genotype</b>		
TT(%)	45 (56.2%)	63 (90.0%)
GG(%)	1 (1.2%)	2 (2.9%)
TG(%)	34 (42.5%)	5 (7.1%)
Hardy-Weinberg	0.98	0.601
X <sup>2</sup> , (P-value)	14.0 (0.001*)	
<b>Allele type</b>		
T (%)	124 (77.5)	131 (93.6)
G (%)	36 (22.5)	9 (6.4)
X <sup>2</sup> (p-value)	15.1, (0.001*)	
OR (95.0% CI)	5.11 (2.621-13.11)	
RR (95.0% CI)	4.52 (1.58-8.22)	

Frequency of genotypes was compared by Chi-square test (χ<sup>2</sup>). Odd ratios (ORs) and Risk ratio (RR), 95% confidence intervals (CI) were calculated by logistic regression analysis. \* Statistically significant at (P < 0.05).

The G allele frequency was significantly higher in patients (22.5%) compared to controls (6.4 %,  $p=0.001$ ) and under the Hardy–Weinberg equilibrium was associated with a higher risk of leukemia [OR (95 % CI) 5.11 (2.621 –13.11) and RR (95 % CI) 4.52 (1.58 –8.22)].

There were no significant genotype-related differences associated with anthropometric parameters, leukemia subtypes, BMI, hemoglobin (Hb), Platelets, white blood cells (WBCs), Blast cells, kidney function, liver function, TC, TrG and LDL-C levels. However, a significant elevation of FBS level, LDL/HDL, TC/HDL ratios, and a significant decrease in HDL levels were observed in G carriers (Table 3).

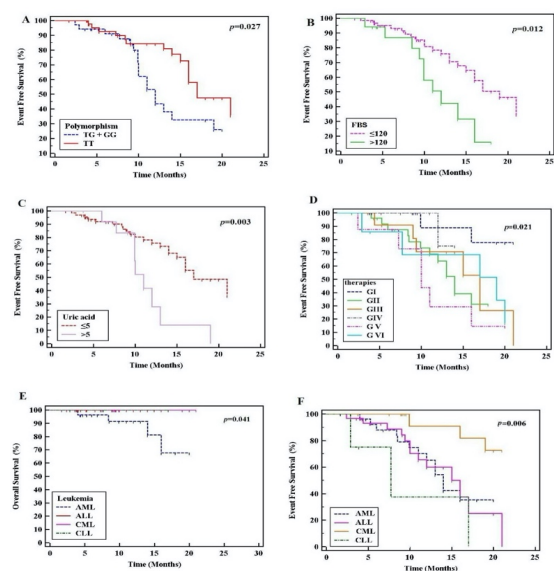
### 3.4. Kaplan Meier analysis of overall survival (OS) and event-free survival (EFS)

Association between the clinical patient's outcome including OS and EFS and ADIPOQ (rs2241766) was investigated after 2 years of follow up of patients. There was no significant difference in the OS in relation to rs2241766 polymorphism (Table 4). However, patients with mutated heterozygous TG or homozygous GG rs2241766 variants showed poor prognosis (partial remission, relapse or death) and a statistically significant ( $P= 0.027$ ) shorter EFS compared to those with the wild type TT genotype (median EFS=12 and 17 months, respectively, HR=0.457; 95% CI 0.223 – 0.937) (Table 4 and Figure. 3A). Moreover, survival analysis indicated that 21% of leukemia patients with hyperglycemia (FBS>120 mg/dl) showed significantly shorter median EFS of 12 months compared with 19 for normoglycaemia patients (HR=2.588; 95% CI 1.195 – 5.60,  $p=0.012$ ) (Figure 3B). Similarly, 16 % of patients with hyperuricemia (>5mg/dl) showed significantly worse outcomes with median EFS of 11 months compared to 17 for normoglycemia patients (HR=3.207; 95% CI 1.437–7.15,  $p=0.003$ ) (Figure 3C). AML patients showed an increased death rate ( $p=0.041$ ) while CML was associated with a good prognosis and longer EFS (mean 19.35months,  $p=0.006$ ). Finally, patients treated with Imatinib or Nilotinib exhibited a good prognosis and longer EFS (mean 19.2months,  $p=0.021$ ) (Figure 3D-F).

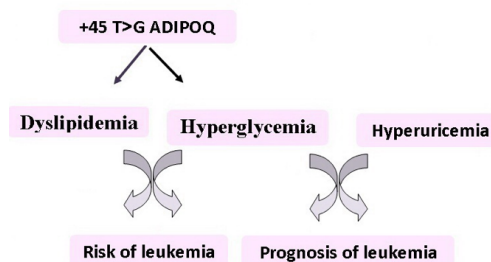
**Table 3:** Association between ADIPOQ (rs2241766), anthropometric and biochemical parameters in Leukemia patients.

characteristic	TT "n=45"	TG+GG "n=35"	P
Age (years)	35.60±14.47	37.27±13.75	0.608
BMI (Kg/m <sup>2</sup> )	27.16±2.88	26.50±3.48	0.35
Hb (mg/dl)	8.39±1.79	8.16±2.33	0.61
WBCs(x1000 cells/ µl)	18.20±19.51	22.73±30.41	0.74
Platelets(x1000(cells/ µl)	112.11±94.9	148.28±145.	0.184
Blast Cells %	39.64±30.59	41.88±30.41	0.74
FBS (mg/dl)	95.84±18.24	117.2±27.61	* 0.0001
Urea (mg/dl)	24.93±7.62	28.71±13.18	0.120
ALT (U/L)	34.13±29.35	33.4±22.46	0.90
AST (U/L)	26.08±9.94	30.51±18.89	0.18
Total Bilirubin (mg/dl)	0.66±0.44	0.73±0.57	0.53
Albumin (g/dl)	3.07±0.51	3.14±0.61	0.57
Creatinine (mg/dl)	0.83±0.45	0.86±0.5	0.77
Uric acid (mg/dl)	3.48±1.05	3.86±1.83	0.24
Cholesterol (mg/dl)	114.9±35.15	127.4±36.97	0.12
TrG (mg/dl)	124.6±77.45	121.2±81.67	0.84
HDL-C (mg/dl)	34.5±14.18	25.81±5.98	0.001*
LDL-C (mg/dl)	59.62±30.52	67.21±28.99	0.26
TC/HDL	3.71±1.39	4.96±1.35	* 0.0001
LDL/HDL	1.923±1.03	2.64±1.06	* 0.003*

Data are given as mean ± SD; \* statistically significant ( $P < 0.05$ ) compared to control. BMI, Body mass index. Hb, Hemoglobin. WBCs, white blood cells. FBS, Fasting blood sugar. ALT, alanine transaminase. AST, aspartate transaminase. TrG, Triglycerides. HDL, high-density lipoproteins. LDL, low-density lipoproteins. TC, total cholesterol.



**Figure 3.** Kaplan-Meier survival curves: (A) EFS in relation to T45G polymorphism; (B) EFS in relation to blood glucose level; (C) EFS in relation to Uric acid level; (D) EFS in relation to therapeutic protocols: Imatinib or Nilotinib (Group I), Daunorubicin for 3 days followed by Cytosar for 7 days (Group II), Larson protocol (Group III), Linker protocol (Group IV), Hyper-CVAD (Group V), Others (Group VI); (E) OS in relation to leukemia subtypes; (F) EFS in relation to leukemia subtypes, the significance is considered at  $p < 0.05$ .



**Figure 4.** Graphical abstract representing the suggested interconnection between ADIPOQ (rs2241766) SNP and leukemia through metabolic reprogramming of Glucose, lipids and as uric acid levels.

**Table 4:** Kaplan-Meier analysis for leukemia patients.

	N	Mean	Median	Hazard	95% C.I	%	Log-rank
<b>Polymorphism</b>							
TG + GG	32	17.75	-	-	-	75.0	0.005
TT	48	20.00	-	1.087	0.103 – 11.5	89.7	0.945
<b>FBS(mg/dl)</b>							
≤120	66	20.21	-	-	-	91.3	0.421
>120	14	17.0	-	2.089	0.215 – 20.3	75.0	0.516
<b>Uric acid (mg/dl)</b>							
≤5	69	20.01	-	-	-	88.3	0.404
>5	11	-	-	0.041	0.0 - 173743	100.0	0.525
<b>Subtypes of leukemia</b>							
AML	28	17.69	-	-	-	67.8	8.236* 0.041*
ALL	30	-	-	0.006	0.0 – 4511.6	100.0	
CML	18	-	-	0.005	0.0 – 2703	100.0	
CLL	4	-	-	0.005	0.0 – 1.44	100.0	
<b>Polymorphism</b>							
TG + GG	35	13.17	12.0	-	-	26.1	4.897* 0.027*
TT	45	16.75	17.0	0.457	0.223 – 0.937	35.7	
<b>FBS (mg/dl)</b>							
≤120	57	16.35	19.0	-	-	34.7	6.375* 0.012*
>120	23	11.96	12.0	2.588*	1.195 – 5.60	15.8	
<b>Uric acid (mg/dl)</b>							
≤5	64	16.27	17.0	-	-	36.3	9.121* 0.003*
>5	16	11.50	11.0	3.207*	1.437 – 7.15	0.0	
<b>Subtypes of</b>							
AML	28	14.18	14.0	-	-	-	12.454* 0.006*
ALL	30	14.39	16.0	0.904	0.420	1.94	
CML	18	19.35	-	0.163	0.044	0.598	
CLL	4	9.99	7.70	2.227	0.631	7.866	
<b>Therapeutic</b>							
Group I <sup>(R)</sup>	16	19.21	-	-	-	77.8	13.272* 0.021*
Group II	27	13.23	14.0	7.75*	1.64 – 36.6	31.3	
Group III	12	14.99	17.0	6.16*	1.22 – 30.98	0.0	
Group IV	10	13.50	-	2.26	0.195 – 26.3	75.0	
Group V	8	11.14	10.0	11.62*	2.24 – 60.14	14.6	
Group VI	7	14.76	19.0	6.60*	1.23 – 35.3	17.1	

\* Statistically significant at ( $P < 0.05$ ). Therapeutic protocols: Imatinib or Nilotinib (Group I), Daunorubicin for 3 days followed by Cytosar for 7 days (Group II), Larson protocol (Group III), Linker protocol (Group IV), Hyper-CVAD (Group V), Others (Group VI). Acute myeloid leukemia (AML), Acute lymphoblastic leukemia (ALL), Chronic myeloid leukemia (CML), Chronic lymphoblastic leukemia (CLL).



#### 4. DISCUSSION

As a result of the global continuous increase in air pollution and other environmental factors, there is an increasing incidence of leukemia worldwide as well as among the Egyptian population (Filippini *et al.*, 2019). Adiponectin has been shown to play a crucial role in obesity-associated tumors (Parida *et al.*, 2019). On the other hand, there is increasing evidence that obesity is associated with an increased risk as well as worst prognosis for leukemia patients (Larsson *et al.*, 2008, Castillo *et al.*, 2016).

Among the different ADIPOQ SNPs reported, T45G ADIPOQ has been suggested to decrease serum levels of ADIPOQ protein and to be associated with many metabolic disorders and solid tumors (Smetnev *et al.*, 2019). The impact of serum ADIPOQ levels on hematological malignancies was investigated in a single study showing that serum ADIPOQ levels were significantly lower in acute leukemia (Aref *et al.*, 2013). Moreover, among the many research articles emphasizing both the metabolic reprogramming “Warburg effect” and somatic gene mutation theories for cancer, only a few have investigated both theories in hematopoietic malignancies and mostly were done at the experimental level (Gottschalk *et al.*, 2004, Poljsak *et al.*, 2019). Therefore the present study aimed to investigate the association between Adiponectin polymorphism (rs2241766) in relation to the susceptibility and prognosis of Egyptian leukemia patients, in addition, to analyze its effect on the hematological profile and metabolic parameters including blood glucose level, plasma proteins, lipid profile, uric acid as well as liver and kidney functions.

In the current study, no significant association between T45G ADIPOQ genotypes with age or gender was observed. This agrees with a previous study that revealed the absence of association between T45G ADIPOQ genotypes and age or gender (Awede *et al.*, 2018). However, a significant decrease in BMI in leukemia patients compared to controls was observed. Another study revealed that lower BMI together with diabetes is significantly associated with the incidence of leukemia in Egypt (El-Koofy *et al.*, 2020). In contrast, a recent meta-analysis study reported that

among the 20 most populous countries, Egypt had the highest level of adult obesity that is associated with the incidence and mortality from leukemia (GBD, 2017).

Our fundamental ADIPOQ genotyping analysis indicated an association between rs2241766 polymorphism and the risk of developing leukemia since the mutated genotypes TG/GG as well as the G allele frequency were significantly higher in Leukemia patients compared to controls. This may be explained as the G allele exerts its effect by negatively influencing the stability of ADIPOQ mRNA, subsequently interfering with the anti-proliferation, anti-angiogenic and pro-apoptotic effects of ADIPOQ, as well as resistance to chemotherapy (Takhshid *et al.*, 2015, Tumminia *et al.*, 2019). The lack of association between the G allele and OS of patients in the current study might be attributed to the small sample size where only 4 patients with AML out of 80 patients died within the 2 years follow-up period, a number that could not segregate leukemia patients according to the SNP T45G ADIPOQ.

Our data revealed that among all biochemical parameters, hyperglycemia was associated with both G allele and poor prognosis in leukemia patients compared to those with normoglycemia without a notable effect on OS. consistent with our data, another study showed evidence of a susceptibility locus for type 2 diabetes in French whites on chromosome 3q27 supporting the relationship between the gene locus of ADIPOQ on human chromosome 3q27 and hyperglycemia (Vionnet *et al.*, 2000; Dorajoo *et al.*, 2015; Rashkovan *et al.*, 2019).

Our data showed that dyslipidemia was associated with the G allele, while hyperuricemia was associated with worse clinical outcomes in patients compared to those with normouricemia. These results are in accordance with another study showing that the G carriers had dyslipidemia (Foucan *et al.*, 2018). This supports the crosstalk between ADIPOQ and HDL where ADIPOQ induces HDL production and vice versa (Ge *et al.*, 2015). Besides the genetic effect, we cannot ignore the role of malnutrition on the production of HDL where it has been reported

that low protein and fruit consumption were observed in leukemia patients during radio-or chemotherapy (Bahgat *et al.*, 2013). Moreover, hyperglycemia accelerates lipolysis and subsequently, leads to decreased HDL levels. Our data match a previous study that pointed to the role of the genetic alterations and dietary pattern in dyslipidemia via interference with HDL-induced anti-oxidative, anti-proliferative and anti-inflammatory properties (Christou *et al.*, 2013). Regarding the hyperglycemia, Motawi *et al.* (2015) reported the association between G allele frequency with Diabetes Mellitus (DM) in Egyptians via reducing the level of ADIPOQ, besides, Castillo *et al.* (2012) highlighted the role of DM in increasing the risk of leukemia (Castillo *et al.*, 2012, Motawi *et al.*, 2015).

Many mechanisms were proposed to explain the association between ADIPOQ, hyperglycemia, and leukemia. Firstly, as mentioned above, ADIPOQ exerts its anti-diabetic action via protecting  $\beta$ -cell, reducing the hepatic glucose production, increasing the utilization of glucose and regulating the insulin sensitivity (Motawi *et al.*, 2015), thus its deficiency as expected in G carriers may be attributed to the notable hyperglycemia. Secondly, oncogenes such as BCR-Abl, a mutated gene resulting from t(9;22) chromosomal translocation in 25% of leukemia cells, promotes the glucose uptake via trafficking of glucose transporter (Glut1) to the cell surface and promoting glycolysis, lipid and nucleotide biosynthesis (Liu *et al.*, 2014). Thirdly, over-expression of free insulin-like growth factor (IGF-1), an enhancer of hyperglycemia and cell transformation, increases the glucose uptake by leukemic cells to support their proliferation as well as chemotherapy resistance (Casellas *et al.*, 2015, Ye *et al.*, 2018). Finally, hyperglycemia was strongly correlated with infection-induced death in leukemia patients as the notable poor prognosis in G carriers and hyperglycaemic patients (Matias *et al.*, 2013, Xu *et al.*, 2018) and since hyperglycemia is known to impair ADIPOQ production via the oxidative stress (Li *et al.*, 2019), therefore, it is suggested that (rs2241766) SNP of ADIPOQ together with

hyperglycemia might have an impact on the worst clinical outcome for leukemia patients.

Regarding the observed hyperuricemia, our results are in agreement with a previous report showing that uric acid exerts many pro-inflammatory effects that contribute to the progression and aggressiveness of cancer (Fini *et al.*, 2012). The interconnection between hyperuricemia, hyperglycemia in leukemia patients might be explained by different mechanisms. Firstly, the high rate of cell lysis in leukemia patients results in releasing of purines, accumulation of uric acid, and increasing the risk of insulin resistance (Furuhashi *et al.*, 2018). Secondly, the production of UA is accompanied by the generation of reactive oxygen species which have an inhibitory effect on ADIPOQ production (Washio *et al.*, 2017). Overall, our data suggest that ADIPOQ (rs2241766) SNP might center the association between dyslipidemia, hyperglycemia, and leukemia as emphasized and represented in Figure 4.

The four death cases during our study were diagnosed with AML; this is consistent with a previous report which revealed that AML patients display the poorest survival rate (Bhayat *et al.*, 2009). Several reports have revealed that despite advances in the therapy of lymphoid and myeloid leukemia and achievement of complete remission (CR), higher relapse and death rate due to infection and hemorrhage are recorded (El-Zawahry *et al.*, 2007; Abdelmabood *et al.*, 2018).

Our Kaplan-Meier analysis of EFS indicated that ALL patients who were treated with Linker protocol showed a better prognosis compared to the Larson protocol and Hyper CVAD regimen. This is consistent with a previous study indicating that hyperglycemia is associated with recurrence in ALL treated with the hyper-CVAD regimen (Vu *et al.*, 2012). Moreover, our data show that CML patients who were treated with Imatinib or Nilotinib, tyrosine kinase inhibitors (TKIs), showed a good prognosis. It was reported that treatment of CML patients with imatinib results in the increase of ADIPOQ levels as well as improving the glucose and lipid metabolism as it enhances the adipocytes differentiation in bone marrow (Fitter *et al.*, 2010).

Since deaths during induction therapy in acute leukemia remain a major challenge in developing countries, using enhanced supportive care is effective to improve the survival outcome (Hafez *et al.*, 2019). A recent study showed that resistance to Imatinib and nilotinib are attributed mainly to genetic mutation and suggested that the outcomes may be improved by supportive therapy as those enhanced ADIPOQ productions. Many natural therapies that enhance the production of ADIPOQ such as l-cysteine, garlic, manganese, cobalt, and phytochemicals including astragaloside II, isoastragaloside I, Zatariamultiflora and temocapril extracts may be effective in improving the clinical outcomes (Achariet *al.*, 2017).

Collectively, our data agree with the metabolic reprogramming theory for cancer, reflected by biochemical differences associated with the rs2241766 as well as the genetic theory confirmed by the significant differences observed in the genotype distribution and allele frequency between leukemia patients and controls. Besides, it is confirming its role in response to different therapeutic protocols.

Our data implicate that adiponectin single nucleotide polymorphism (rs2241766) might be used as a prognostic factor for leukemia patients. It is recommended to use supportive therapies that enhance ADIPOQ production and action, as well as, counteracting of hyperglycemia and dyslipidemia in leukemia patients having T45G genotype. This may improve the efficacy of chemotherapy and clinical outcomes. Also, the implication of ADIPOQ in improving Imatinib and Nilotinib actions should be taken into consideration.

In conclusion, we may suggest more research on supportive therapy enhancing ADIPOQ production and action which might lead to improving the efficacy of chemotherapy and therefore the patient's clinical outcome. Moreover, ADIPOQ rs2241766 SNP may be used as a prognostic factor for leukemia patients treated with different chemotherapeutic regimens.

### CONFLICT OF INTEREST

The authors declare no conflict of interest.

### ACKNOWLEDGMENT

This research did not receive any specific grant from funding agencies in the public, commercial, or not-for-profit sectors.

### REFERENCES

- Abdelmabood S, Fouda AE, Boujettif F, Mansour A (2018) Treatment outcomes of children with acute lymphoblastic leukemia in a middle-income developing country: high mortalities, early relapses, and poor survival, *J Pediatr (Rio J)*;18: 30583-7.
- Achari AE and Jain SK. (2017) Adiponectin, A Therapeutic Target for Obesity, Diabetes, and Endothelial Dysfunction. *Int J MolSci*;18:1321.
- Awede B, Adovoekpe D, Adehan G, MacFarlane NG, Azonbakin S, Dossou E, Amoussou-Guenou M and Djrolo F (2018) Adiponectin, in contrast to leptin, is not associated with body mass index, waist circumference and HOMA-IR in subjects of a west-African population, *Physiological reports*;6: e13718.
- Bahgat S, Fouda M, Maria M (2013) Relation between nutritional status and feeding problems of children suffering from cancer undergoing chemo-radiotherapy. *Life Sci J*;10: 3222–3236.
- Barbe A, Bongrani A, Mellouk N, Estienne A, Kurowska P, Grandhaye J, Elfassy Y, Levy R, Rak A, Froment, P and Dupont J (2019) Mechanisms of Adiponectin Action in Fertility: An Overview from Gametogenesis to Gestation in Humans and Animal Models in Normal and Pathological Conditions. *Int J MolSci*;20:1526.
- Bhayat F, Das-Gupta E, Smith C, McKeever T and Hubbard R (2009) The incidence of and mortality from leukaemia as in the UK: a general population-based study, *BMC cancer*; 9: 252-8.
- Bray F, Ferlay J, Soerjomataram I, Siegel RL, Torre LA, Jemal A. (2018) Global cancer statistics 2018: GLOBOCAN estimates of incidence and mortality worldwide for 36 cancers in 185 countries, *CA: A Cancer Journal for Clinicians*;68: 394-424.
- Burtis Carl A, Ashwood, Edward R, Bruns, David E (2007) Tietz Fundamentals of Clinical Chemistry, 6<sup>th</sup> Ed. Philadelphia; W.B. Saunders: PA pp 518-519. eBook ISBN: 9781437719406
- Casellas A, Mallol C, Salavert A, et al., (2015) Insulin-like Growth Factor 2 Overexpression Induces  $\beta$ -Cell Dysfunction and Increases Beta-cell Susceptibility to Damage. *J Biol Chem*; 290 (27): 16772-85.

- Castillo JJ, Mull N, Reagan JL, Nemr S, Mitri J (2012) Increased incidence of non-Hodgkin lymphoma, leukemia, and myeloma in patients with diabetes mellitus type 2: a meta-analysis of observational studies, *Blood*;119: 4845–50. Castillo JJ, Mulkey F, Geyer S, Kolitz JE, Blum W, Powell BL & Stone RM (2016) Relationship between obesity and clinical outcome in adults with acute myeloid leukemia: A pooled analysis from four CALGB (alliance) clinical trials, *American journal of hematology*; 91(2): 199-204.
- Christou GA and Kiortsis DN (2013) Adiponectin and lipoprotein metabolism, *Obes Rev*; 14: 939-49.
- Cui E, Deng A, Wang X, Wang B, Mao W, Feng X and Hua F (2011) The role of adiponectin gene polymorphisms in the susceptibility and prognosis of non-small cell lung cancer, *Biochemistry and Cell Biology*;89: 308-13.
- Dorajoo, R., Liu, J., & Boehm, B. O. (2015). Genetics of type 2 diabetes and clinical utility. *Genes*, 6(2), 372-384.
- El-Baz HA, Mosa TE, Elabd E M, Ramadan A, Elharoun AS, Elmersy E A, & Fouda MI (2013) Serum adiponectin and resistin levels in de novo and relapsed acute lymphoblastic leukemia children patients, *Iranian journal of public health*; 42(5): 504.
- El-Koofy N, El-Mahdy M, Fathy M, El Falaki M, El Dine Hamed DH (2020) Nutritional rehabilitation for children with cystic fibrosis: Single-center study, *Clin Nutr ESPEN*;35: 201-206.
- El Metwaly MMF, Emarah ZA, AbdElhamied AEM, Hegazy MA, Kamel EA and Al-Wehedy AI (2019) Morbidity Profile of Cases Attended Oncology Center of Mansoura University (OCMU), Egypt: A Cross-Sectional Study. *Osong Public Health Res Perspect*;10:177–86.
- El-Zawahry HM, Zeeneldin AA, and Samra MA. (2007) Cost and outcome of treatment of adults with acute myeloid leukemia at the National Cancer Institute-Egypt, *J Egypt Natl Canclnst*;19:106-13.
- Filippini T, Hatch EE, Rothman KJ, Heck JE, Park AS, Crippa A & Vinceti M (2019) Association between outdoor air pollution and childhood leukemia: a systematic review and dose-response meta-analysis, *Environmental health perspectives*;127(4): 046002
- Filliatre-Clement L, Broseus J, Muller M, Hosseini K, Rotonda C, Schirmer L, Roth-Guepin G, Bonmati C, Feugier P, Béné MC and Perrot A (2013) Impact of serum adiponectin and leptin levels in acute leukemia. *Hematology*;18: 198-203.
- Fini MA, Elias A, Johnson RJ, and Wright RM (2012) Contribution of uric acid to cancer risk, recurrence, and mortality. *Clin Transl Med*; 1:16-31.
- Fitter S, Vandyke K, Schultz CG, White D, Hughes TP and Zannettino AC (2010) Plasma adiponectin levels are markedly elevated in imatinib-treated chronic myeloid leukemia (CML) patients: a mechanism for improved insulin sensitivity in type 2 diabetic CML patients? *The Journal of Clinical Endocrinology & Metabolism*;95: 3763-7.
- Foucan L, Ezourhi N, Maimaitiming S, Hedreville S, Inamo J, Atallah A, Bangou-Bredet J, Aubert R, Chout R, Fumeron F, Donnet JP, Marre M. (2010) Adiponectin multimers and ADIPOQ T45G in coronary artery disease in Caribbean type 2 diabetic subjects of African descent, *Obesity (Silver Spring)*;18: 1466-8.
- Furuhashi M, Matsumoto M, Murase T, Nakamura T, Higashiura Y, Koyama M,
- Tanaka M, Moniwa N, Ohnishi H, Saitoh S, Shimamoto K, and Miura T (2018) Independent links between plasma xanthine oxidoreductase activity and levels of adipokines, *J Diabetes Investig*;10: 1059-67.
- Garcia-Manero G and Kantarjian HM (2000). The hyper-CVAD regimen in adult acute lymphocytic leukemia, *Hematol Oncol Clin North Am.*;14:1381–xi.
- GBD 2015 Obesity Collaborators et al. (2017) “Health Effects of Overweight and Obesity in 195 Countries over 25 Years.” *The New England journal of medicine*;377: 13-27.
- Ge P, Dong C, Ren X, Weiderpass E, Zhang C, Fan H, Zhang J, Zhang Y and Xi J (2015) The High Prevalence of Low HDL-Cholesterol Levels and Dyslipidemia in Rural Populations in Northwestern China, *PLoS One*;10: e0144104.
- Geriki S, Bitla AR, Srinivasa Rao PVLN, Hulikal N, Yootla M, Sachan A & Kumari AP (2019) Association of single nucleotide polymorphisms of adiponectin and leptin genes with breast cancer, *Molecular biology reports*; 46(6): 6287-6297.
- Gottschalk S, Anderson N, Hainz C, Eckhardt SG and Serkova NJ. Imatinib (2004) “Imatinib (STI571)-mediated changes in glucose metabolism in human leukemia BCR-ABL-positive cells,” *Clinical Cancer Research*;10: 6661–8.
- Hanafy H, Rawa SM, Dalia B, Mohamed H and Lobna SM (2019) Early Deaths in Pediatric Acute Leukemia: A Major Challenge in Developing

- Countries. *Journal of Pediatric Hematology/Oncology*;41: 261–266.
- Hu X, Yuan P, Yan J, Feng F, Li X, Liu W, & Yang Y (2013) Gene polymorphisms of ADIPOQ+ 45T> G, UCP2-866G> A, and FABP2 Ala54Thr on the risk of colorectal cancer: a matched case-control study, *PLoS One*: 8(6).
- Jhuo SJ, Tsai WC, Lee HC, Lin TH, Lee KT, & Lai WT, (2019) Association between adiponectin T94G polymorphism and resistant hypertension in young-onset Taiwanese patients, *Gene*; 689:161-165.
- Karimi H, Nezhadali M, & Hedayati M (2018) Association between adiponectin rs17300539 and rs266729 gene polymorphisms with serum adiponectin level in an Iranian diabetic/pre-diabetic population, *Endocrine regulations*; 52(4): 176-184.
- Khaled SA, Nabih O, Abdel Aziz NM and Mahran DG (2019) Myeloid Leukemias: A Glance at Middle Eastern Centers. *J Blood Med*;10:425–433.
- Larson RA, Dodge RK, Burns CP, Lee EJ, Stone RM, et al., (1995). A five-drug remission induction regimen with intensive consolidation for adults with acute lymphoblastic leukemia: cancer and leukemia group B study 8811. *Blood*; 85: 2025–2037.
- Larsson SC, & Wolk A (2008) Overweight and obesity and incidence of leukemia: a meta-analysis of cohort studies, *International journal of cancer*; 122(6): 1418-1421.
- Li J, Shen X (2019) Oxidative stress and adipokine levels were significantly correlated in diabetic patients with hyperglycemic crises, *Diabetol Metab Syndr*;11: 13.
- Li, Y, Yao Y, Qian X, Shi L, Zhou J, Ma Q, & Yao Y (2015) The association of adiponectin gene promoter variations with non-small cell lung cancer in a Han Chinese population, *PLoS one*; 10(5).
- Linker CA, Levitt LJ, O'Donnell M, Forman SJ and Ries CA (1991) Treatment of adult acute lymphoblastic leukemia with intensive cyclical chemotherapy: a follow-up report, *Blood*;78: 2814-22.
- Liu T, Kishton RJ, Macintyre AN et al., (2014) Glucose transporter 1-mediated glucose uptake is limiting for B-cell acute lymphoblastic leukemia anabolic metabolism and resistance to apoptosis. *Cell Death Dis*; 5(10): e1470.
- Ma JJ, Shang J, Wang H, Sui JR, Liu K and Du JX (2016) Serum adiponectin levels are inversely correlated with leukemia: A meta-analysis. *Journal of cancer research and therapeutics*;12: 897-902.
- Matias CN, Lima V, Teixeira HM, Souto FR and Magalhães V (2013) Hyperglycaemia increases the complicated infection and mortality rates during induction therapy in adult acute leukemia patients, *Rev Bras Hematol Hemoter*;35: 39–43.
- Mohamed AA, Omar H, Ghaffar MFA, Marie MS, Ramadan MEEA, Talima SM, & Mahmoud, S (2019) Single Nucleotide Polymorphism in Adiponectin Gene and Risk of Pancreatic Adenocarcinoma. *Asian Pacific journal of cancer prevention, APJCP*; 20(1): 139.
- Motawi T, Salman T, Shaker O and Abdelhamid A (2015) Association of polymorphism in adiponectin (+45 T/G) and leptin (–2548 G/A) genes with type 2 diabetes mellitus in male Egyptians, *Arch Med Sci*;11: 937–944.
- Pasha HF, Mohamed RH, Toam MM and Yehia AM (2019) Genetic and Epigenetic Modifications of Adiponectin Gene: Potential Association with Breast Cancer Risk, *The journal of gene medicine*; 15: e3120.
- Parida S, Siddharth S and Sharma D (2019) Adiponectin, obesity, and cancer: Clash of the bigwigs in health and disease, *International journal of molecular sciences*;20: 2519-36.
- Poljsak B, Kovac V, Dahmane R, Levec T and Starc A (2019) Cancer Etiology: A Metabolic Disease Originating from Life's Major Evolutionary Transition? *Oxid Med Cell Longev*;2019: 7831952.
- Rashkovan M, Ferrando A (2019) Metabolic dependencies and vulnerabilities in leukemia, *Genes Dev*;33: 1460–1474.
- Rossi D, Terzi-di-Bergamo L, De Paoli L, Cerri M, Ghilardi G, Chiarenza A, Bulian P, Visco C, Mauro FR, Morabito F, Cortelezzi A, Zaja F, Forconi F, Laurenti L, Del Giudice I, Gentile M, Vincelli I, Motta M, Coscia M, Rigolin GM, Tedeschi A, Neri A, Marasca R, Perbellini O, Moreno C, Del Poeta G, Massaia M, Zinzani PL, Montillo M, Cuneo A, Gattei V, Foà R, Gaidano G (2015). Molecular prediction of durable remission after first-line fludarabine-cyclophosphamide-rituximab in chronic lymphocytic leukemia. *Blood*; 126: 1921-1924.
- Safinaz H, Doaa M and Rania H (2019) Risk factors of hematological malignancies in Upper Egypt: a case-control study, *Egyptian J of internal Medicine*;31: 171-177.
- Smetnev S, Klimushina M, Kutsenko V, Kiseleva A, Gumanova N, Kots A, Skirko O, Ershova A, Yarovaya E, Metelskaya V, Meshkov A and Drapkina O (2019) Associations of SNPs of the ADIPOQ Gene with Serum Adiponectin Levels,

- Unstable Angina, and Coronary Artery Disease, *Biomolecules*;9: 537-49.
- Takahashi, M., Arita, Y., Yamagata, K., Matsukawa, Y., Okutomi, K., Horie, M & Nakamura, T. (2000). Genomic structure and mutations in adipose-specific gene, adiponectin. *International journal of obesity*, 24(7), 861-868.
- Takhshid MA, Haem Z and Aboualizadeh F (2015) The association of circulating adiponectin and +45 T/G polymorphism of adiponectin gene with gestational diabetes mellitus in Iranian population, *J Diabetes MetabDisord*;14: 30.
- Tumminia A, Vinciguerra F, Parisi M, Graziano M, Sciacca L, Baratta R, & Frittitta L (2019) Adipose Tissue, Obesity and Adiponectin: Role in Endocrine Cancer Risk, *Int J MolSci*;20: 2863.
- Vionnet, N., Dupont, S., Gallina, S., Francke, S., Dotte, S., De Matos, F & Zekiri, L. (2000). Genomewide search for type 2 diabetes-susceptibility genes in French Whites: evidence for a novel susceptibility locus for early-onset diabetes on chromosome 3q27-qter and independent replication of a type 2-diabetes locus on chromosome 1q21-q24. *The American Journal of Human Genetics*, 67(6), 1470-1480.
- Vu K, Busaidy N, Cabanillas ME, Konopleva M, Fader I S, Thomas DA, O'Brien S, Broglio K, Ensor J , Escalante C, Andreeff M, Kantarjian H, Lavis V, and Yeung SJ (2012) A randomized controlled trial of an intensive insulin regimen in patients with hyperglycemic acute lymphoblastic leukemia, *Clinical Lymphoma Myeloma and Leukemia*; 12: 355-62.
- Washio, K.W., Kusunoki Y., Murase, T., Nakamura, T., Osugi, K., (2017) Xanthine oxidoreductase activity is correlated with insulin resistance and subclinical inflammation in young humans, *Metabolism*;70: 51-6.
- Xu GP, Chen WX, Xie WY, Wu LF (2018) The association between IGF1 Gene 3'-UTR polymorphisms and cancer risk: A Meta-analysis, *Medicine (Baltimore)*; 97: e13829.
- Yates J, Glidewell O, Wiernik P, Cooper M R, Steinberg D, Dosik H, Levy R, Hoagland C, Henry P, Gottlieb A, Cornell C, Berenberg J, Hutchison J L, Raich P, Nissen N, Ellison R R, Frelick R, James G W, Falkson G, Silver R T, Haurani F, Green M, Henderson E, Leone L, Holland J F (1982). Cytosine arabinoside with daunorubicin or adriamycin for therapy of acute myelocyticleukemia: a CALGB study. *Blood* ;60: 454-62.
- Ye H, Adane B, Khan N et al., (2018) Cancer Cell Article Subversion of Systemic Glucose Metabolism as a Mechanism to Support the Growth of Leukemia Cells. *Cancer Cell*; 34: 659-673.

### **Egyptian Association for Cancer Research (EACR)**

<http://eacr.tanta.edu.eg/>

EACR is an NGO society that was declared by the Ministry of Social Solidarity (Egypt) No. 1938 in 19/11/2014 based on the initiative of Prof. Mohamed Labib Salem, the current Chairman of EACR. EACR aims primarily to assist researchers, in particular young researchers in the field of cancer research through workshops, seminars and conferences. Its first international annual conference entitled "Anti-Cancer Drug Discovery" was successfully organized in April 2019 (<http://acdd.tanta.edu.eg>). Additionally, EACR aims to raise the awareness of the society about the importance of scientific research in the field of cancer research in prediction, early diagnosis and treatment of cancer. EACR is also keen to outreach the scientific community with periodicals and news on cancer research including peer-reviewed scientific journals for the publication of cutting-edge research. The official scientific journal of EACR is "International Journal of Cancer and biomedical Research (IJCBR: <https://jcbjournals.ekb.eg>) was successfully issued in 2017 and has been sponsored by the Egyptian Knowledge Bank (EKB: [www.ekb.eg](http://www.ekb.eg)).

**EACR Chairman,**

**Prof. Mohamed Labib Salem, PhD**

Professor of Immunology

Faculty of Science, Tanta University, Egypt

**International Journal of Cancer & Biomedical Research**  
**(IJCBR) Online ISSN 2682-2628**

**Editor-in-Chief**

---

**Mohamed Labib Salem, PhD**  
Tanta University, Egypt

**Managing Editor**

---

**Nehal Elmashad, MD**  
Tanta University, Egypt

**Nabil Mohy Eldin, PhD**  
Kafrelsheikh University, Egypt

**Doaa Al-Ghareeb, PhD**  
Alexandria University, Egypt

**Abdel-Aziz Zidan, PhD**  
Damanhour University, Egypt

**Wesam Meshrif, PhD**  
Tanta University, Egypt

**Rasha Eraky, MD**  
Tanta University, Egypt

**Associate Editor**

---

**Hesham Tawfik**  
Tanta University, Egypt

**Mostafa El-Sheekh**  
Tanta University, Egypt

**Yousry Albolkin, PhD**  
Tanta University, Egypt

**Gamal Badr**  
Assuit University, Egypt

**Elsayed Salim**  
Tanta University, Egypt

**Essam Elshiekh**  
Tanta Cancer Center, Egypt

**Editorial Board**

---

**Alberto Montero**  
Taussig Cancer Center,  
Cleveland, USA

**Marcela Diaz**  
Cleveland Clinic Foundation, USA

**Yi Zhang**  
Zhengzhou University, China

**Shengdian Wang**  
Chinese Academy of Sciences,  
China

**Faris Alenzi**  
Prince Sattam bin Abdulaziz  
University, KSA

**Mark Robunstein**  
Medical University of South  
Carolina, USA

**Mamdooh Ghoneum, DSC**  
Charles Drew University of  
Medicine & Science, USA

**Natarajan Muthusamy, DVM**  
The Ohio State University, USA

**Hideki Kasuya MD, PhD,**  
**FACS**  
Nagoya University, Japan

**Sherif El-Khamisy, MD**  
Sheffield University, UK

**Mohamed Abou-El-Enein,**  
**MD**  
Charité Universitätsmedizin  
Berlin, Germany

**Alaa Eldin Almostafa, MD**  
McGill University, Canada

**Amr Amin**  
United Arab Emirates  
University, UAE

**AbdelRahman Zekri**  
National Cancer Institute, Egypt

**Mohamed Attia, MD**  
Tanta University, Egypt

**Mohamed Elshanshory, MD**  
Tanta University, Egypt

**Hussein Khamis**  
Alexandria University, Egypt

**Magdy Mahfouz**  
Kafr Elsheikh University, Egypt

**Ehab Elbedewey**  
Tanta University, Egypt

**Abeer Badr**  
Cairo University, Egypt

**Nadia Hamdy, PharmD**  
Ain Shams University, Egypt

**Ibrahim El-Sayed**  
Menoufia University, Egypt

**Tarek Aboul-Fadl, PharmD**  
Assiut University, Egypt

**Mohamed Nouredin**  
Banaha University, Egypt

**Haiam Abou Elela**  
National Institute of  
Oceanography and Fisheries,  
Egypt

**Sameh Ali, MD**  
Nationa Liver Institute, Egypt

**Maha EL-Demellawi**  
City for Scientific Research &  
Technology Applications, Egypt

**Desouky A Abd-El-Haleem**  
City for Scientific Research &  
Technology Applications, Egypt

**Ashraf Tabll**  
National Research Center, Egypt

**Wael Lotfy, MD**  
Alexandria University, Egypt

**Olfat Gadallah, MD**  
Tanta University, Egypt

**Nahla Shoukry**  
Suez University, Egypt

**Medhat Eldenary**  
Tanta University, Egypt

**Nagla Sarhan, MD**  
Tanta University, Egypt

**Naglaa Fathy, MD**  
Zagazik University, Egypt

**Azza Hasan Mohamed**  
Menoufia University, Egypt

**Nanees Gamal Eldin**  
Tanta University, Egypt

**Mohamed Mansour, UK**

**Sabbah Hammoury**  
Alexandria Ayadi Almostaqbal  
Oncology Hospital, Egypt

**Nehal Aboufotouh**  
Zewail City for Science and  
Technology, Cairo, Egypt

**Amir Elkhani**  
Galaxo, San Francisco, USA

**Rabab Khairat**  
National Research Center,  
Giza, Egypt

**Ahmed Alzohairy**  
Zagazi University, Egypt

**Wgady Khalil**  
National Research Center, Egypt

**Sayed Bakry**  
Alazhar University, Egypt

**Mohamed Ghanem, MD**  
Kafr Elshikh University, Egypt

**Mohamed Salama, MD**  
Mansoura University, Egypt

**Mona Marie, MD**  
Alexandria University, Egypt

**For more information, contact**

---

**Hamdi Kandil**  
Tanta University, Egypt  
Email: ljcb100@gmail.com